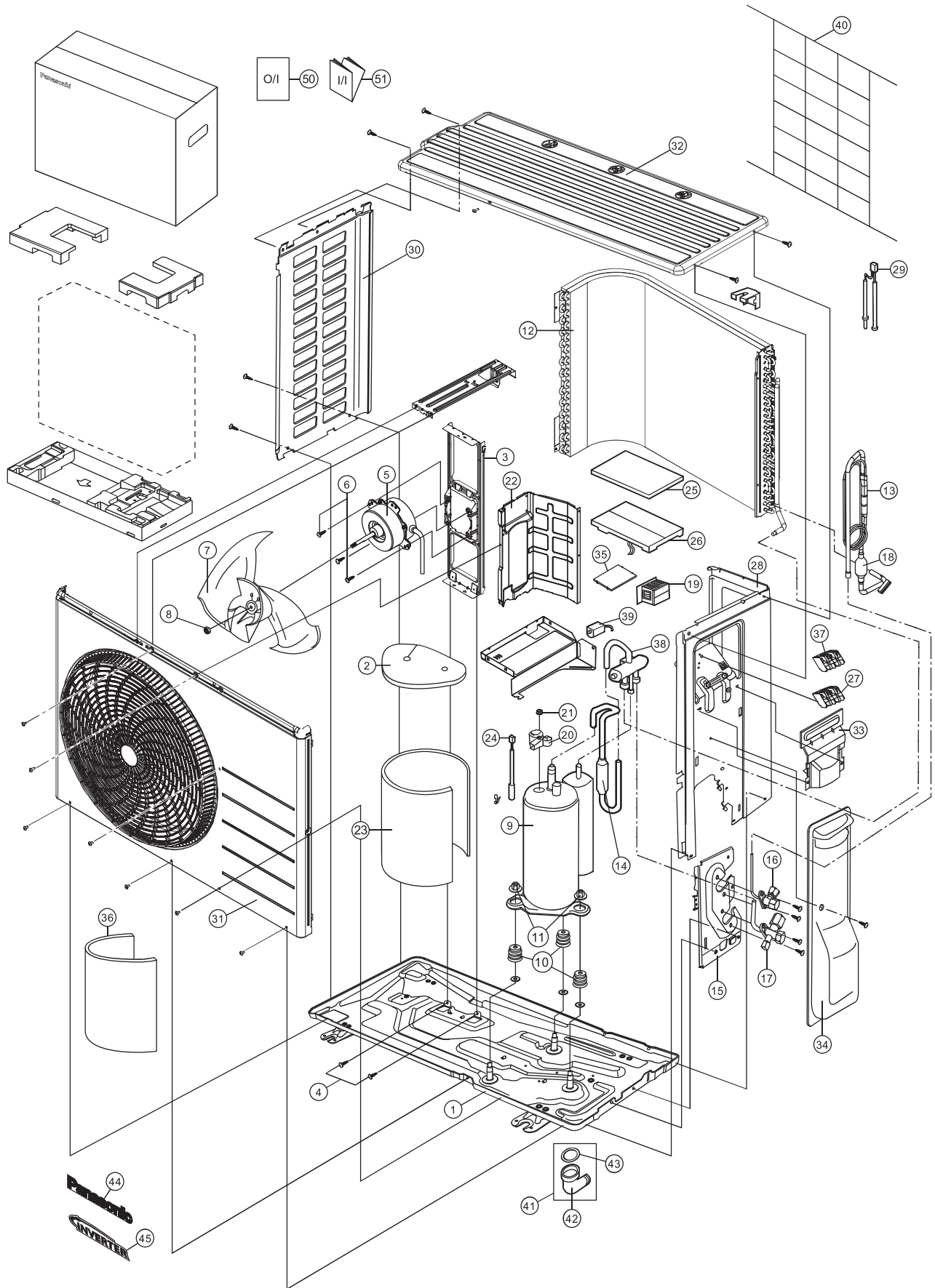


## 21.2 Outdoor Unit

### 21.2.1 CU-Z20TKR CU-Z25TKR CU-Z35TKR



**Note:**

The above exploded view is for the purpose of parts disassembly and replacement.  
The non-numbered parts are not kept as standard service parts.

SAFETY	REF. NO.	PART NAME & DESCRIPTION	QTY.	CU-Z20TKR	CU-Z25TKR	CU-Z35TKR	REMARK
	1	CHASSIS ASSY	1	CWD52K1399	←	←	
	2	SOUND PROOF MATERIAL (COMP TOP)	1	CWG302314	←	←	
	3	FAN MOTOR BRACKET	1	CWD541157	←	←	
	4	SCREW - FAN MOTOR BRACKET	2	CWH551217	←	←	
⚠	5	FAN MOTOR	1	L6CAYYYL0064	←	←	O
	6	SCREW - FAN MOTOR MOUNT	4	CWH55252J	←	←	
	7	PROPELLER FAN ASSY	1	CWH03K1100	←	←	
	8	NUT - PROPELLER FAN	1	CWH56053J	←	←	
⚠	9	COMPRESSOR	1	9RS092XBB21	9RS102XFA21	←	O
	10	ANTI - VIBRATION BUSHING	3	CWH50077	←	←	
	11	NUT - COMPRESSOR MOUNT	3	CWH561096	←	←	
	12	CONDENSER	1	CWB32C4289	←	←	
	13	TUBE ASSY (CAP-TUBE, CHECK VALVE & STRAINER)	1	ACXT00C00260	ACXB15C00050	ACXB15C00060	
	14	DISCHARGE MUFFLER	1	CWB121010	←	←	
	15	HOLDER COUPLING	1	CWH351233	←	←	
	16	2-WAYS VALVE (LIQUID)	1	CWB021589	←	←	O
	17	3-WAY VALVE (GAS)	1	CWB011581	←	←	O
	18	STRAINER	1	CWB111032	←	←	
⚠	19	REACTOR	1	G0C392J00028	←	←	O
	20	TERMINAL COVER	1	CWH171039A	←	←	
	21	NUT - TERMINAL COVER	1	CWH7080300J	←	←	
	22	SOUND PROOF BOARD	1	CWH151428	←	←	
	23	SOUND PROOF MATERIAL (700 mm x 290 mm)	1	CWG302948	←	←	
	24	SENSOR CO-COMP TEMP	1	CWA50C2632	←	←	O
	25	CONTROL BOARD COVER - TOP	1	ACXH13-00450	←	←	
⚠	26	ELECTRONIC CONTROLLER - MAIN	1	ACXA73C28850R	ACXA73C28860R	ACXA73C28870R	O
⚠	27	TERMINAL BOARD ASSY (1, 2, 3, L, N, A)	1	CWA28K1110J	←	←	O
	28	CABINET SIDE PLATE CO.	1	CWE04C1587	←	←	
	29	SENSOR CO-AIR TEMP AND PIPE TEMP	1	CWA50C3267	←	←	O
	30	CABINET SIDE PLATE (LEFT)	1	CWE041858A	←	←	
	31	CABINET FRONT PLATE CO.	1	CWE06C1563	←	←	
	32	CABINET TOP PLATE	1	CWE031230A	←	←	
	33	PLATE - C. B. COVER TERMINAL	1	CWH131301	←	←	
	34	CONTROL BOARD COVER CO.	1	CWH13C1359	←	←	
⚠	35	ELECTRONIC CONTROLLER - DM	1	ACXA73-00070	←	←	O
	36	SOUND PROOF MATERIAL (520 mm x 300 mm)	1	CWG302316	←	←	
	37	TERMINAL BOARD ASSY (DRM)	1	CWA28K1281	←	←	O
	38	4-WAYS VALVE	1	CWB001063	←	←	O
⚠	39	V-COIL COMPLETE (4-WAYS VALVE)	1	CWA43C2431	←	←	O
	40	WIRE NET	1	CWD041212A	←	←	
	41	BAG-COMplete	1	CWG87C900	←	←	
	42	FLEXIBLE PIPE (L-TUBE)	1	CWH5850080	←	←	
	43	PACKING	1	CWB81012	←	←	

SAFETY	REF. NO.	PART NAME & DESCRIPTION	QTY.	CU-Z20TKR	CU-Z25TKR	CU-Z35TKR	REMARK
	44	PANASONIC BADGE	1	CWE373439	←	←	
	45	INVERTER BADGE	1	CWE373441	←	←	
	50	OPERATING INSTRUCTION	1	ACXF55-11420	←	←	
	51	INSTALLATION INSTRUCTION	1	ACXF60-16890	←	←	

(NOTE)

- All parts are supplied from PAPAMY, Malaysia (Vendor Code: 00029488).
- “O” marked parts are recommended to be kept in stock.