

# Electrolux

ELECTROLUX HOME PRODUCTS PTY LTD

ABN 51 004 762 341

Technical Publication N° MO1012.docx

Issue: 1

Date: 1/19

*Electrolux*

## **BUILT-IN MICROWAVE**

**MODEL**

**PNC**

**EVEM645DSD 956004150 00**

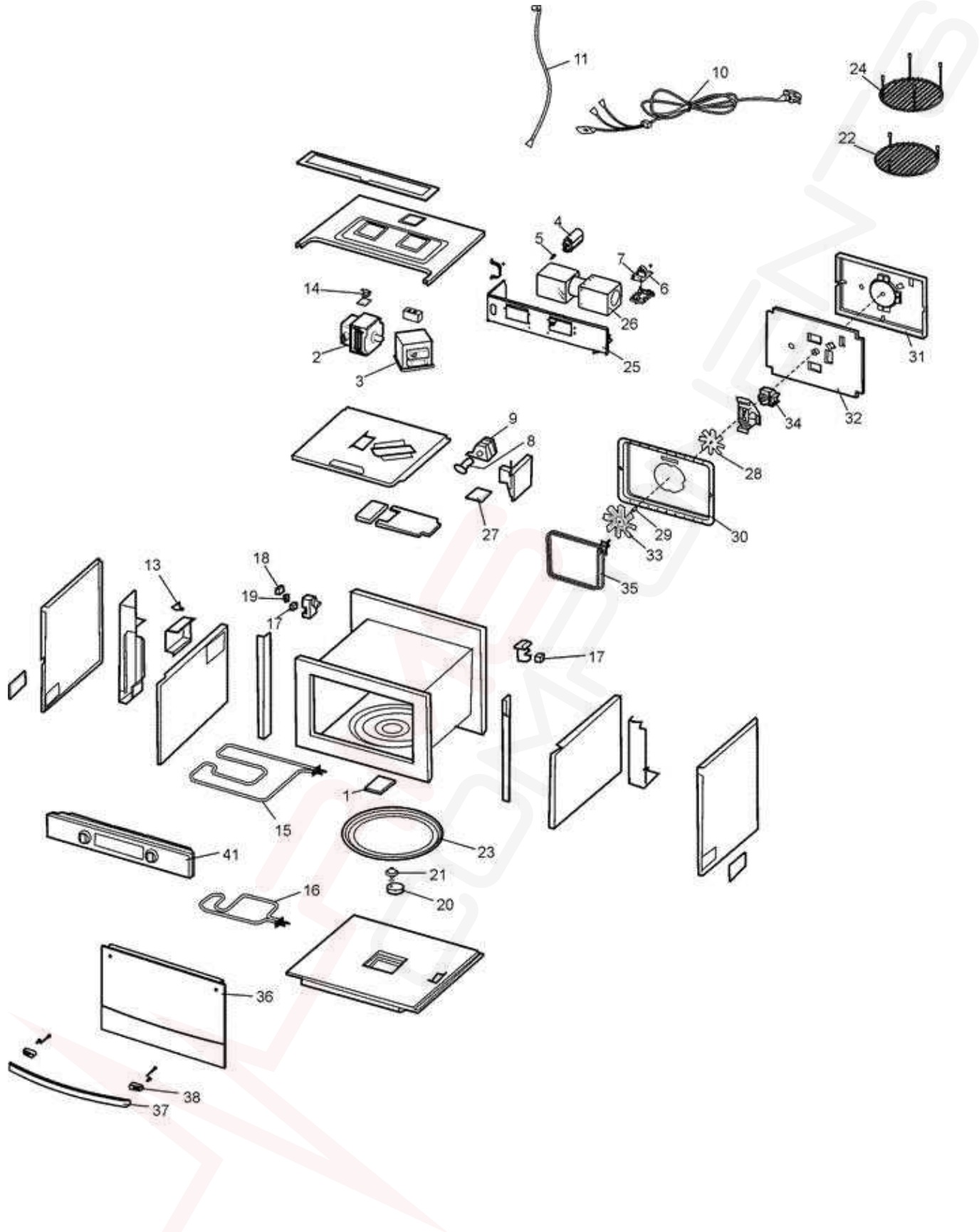
# MAINTENANCE LEVEL CHANGE SUMMARY

<b>ML</b>	<b>Description</b>	<b>Product Release Date</b>
0		01/2019

## MODEL NUMBER IDENTIFICATION

FREE-STANDING COOKERS										
W	B	E	S	#	#	#	W	A	R	R
Brand	Construction	Oven Fuel Type	Added Features	Width	Hob Type	Specification Level	Colour	Series	Side Opening Door Type	Gas Type
W = Westinghouse C = Chef E = Electrolux Z = Zanussi S = Simpson	E = Elevated Cooker F = Front Control Freestanding Cooker L = Rear Control Freestanding Cooker	E = Electric G = Gas	Leave blank for all except the below: S = Side Opening Door P = Pyro	5 = 50 - 54cm 6 = 60 - 60cm 7 = 70 - 70cm 8 = 80 - 80cm 9 = 90 - 90cm 1 = 100cm and above	IF FUEL TYPE = G 0 = No wok 1 = Wok  IF FUEL TYPE = E 2 = Radiant Coil 3 = Solid 4 = Ceramic 5 = Induction 6 = Dual fuel	Even = GIO, Odd = Sep Grill 0 = Lowest Spec 1 2 3 4 5 6 7 8 9 = Highest Spec	W = White S = Stainless Steel B = Black	A = SAFR B = 1st series change C = 2nd series change etc	L = Left Hand Opening R = Right Hand Opening	LP = Liquefied Petroleum NG = Natural Gas
BUILT-IN OVENS										
W	B	E	S	#	#	#	W	A	R	R
Brand	Construction	Oven Fuel Type	Added Features	Width	Cavity Type	Specification Level	Colour	Series	Gas Type	Side Opening Door Type
W = Westinghouse C = Chef E = Electrolux Z = Zanussi S = Simpson	V = Built-in oven	E = Electric G = Gas	Leave blank for all except the below: S = Side Opening Door M = Microwave P = Pyro	3 = 30cm - 30cm 4 = 40cm - 40cm 5 = 50cm - 50cm 6 = 60cm - 60cm 7 = 70cm - 70cm 8 = 80cm - 80cm 9 = 90cm - 90cm 1 = 100cm - 110cm 2 = 120 cm +	1 = Single 2 = Duo 3 = Double 4 = Combo Oven 5 = Sep grill und/bench 6 = Sep grill wall oven 7 = Compact	0 = Lowest Spec 1 2 3 4 5 6 7 8 9 = Highest Spec	W = White S = Stainless Steel B = Black	A = SAFR B = 1st series change C = 2nd series change etc	LP = Liquefied Petroleum NG = Natural Gas	L = Left Hand Opening R = Right Hand Opening
BUILT-IN HOBS										
W	B	#	#	#	#	W	A			
Brand	Construction	Hob Type	Width	No. Burners/Zones	Specification Level	Colour	Series			
W = Westinghouse C = Chef E = Electrolux Z = Zanussi S = Simpson	H = Hob	IF ELECTRIC HOB: S = Solid C = Ceramic I = Induction R = Radiant Coil M = Mix IF GAS HOB: G = Gas D = Dual Fuel	3 = 30cm or below 4 = 40cm - 40cm 5 = 50cm - 50cm 6 = 60cm - 60cm 7 = 70cm - 70cm 8 = 80cm - 80cm 9 = 90cm - 90cm 1 = 100cm - 110cm 2 = 120 cm and above	1 2 3 4 5 6 7 8 9	0 = Lowest Spec 1 2 3 4 5 6 7 8 9 = Highest Spec	W = White S = Stainless Steel B = Black	A = SAFR B = 1st series change C = 2nd series change etc			

MODEL: EVEM645DSD 956004150 00)



Item	Part N°	Description Ex 8235	Qty
1	12570000000067	COVER WAVE GUIDE	1
2	17470000000804	MAGNETRON	1
3	17470000003539	H.V.TRANSFORMER	1
4	17470000000683	H.V.CAPACITOR	1
5	17470000001007	H.V.DIODE	1
6	17170000002914	FILTER NOISE +FUSE	1
7		SEE ITEM 6	
8	17470000009104	LAMP INTERGRATED	1
9	12270000000202	SHADE	1
10	17470000002451	POWER CORD ASS'Y	1
11	17170000004580	SENSOR TEMPERATURE	1
13	17470000009120	THERMOSTAT 150/90	1
14	17470000009112	THERMOSTAT 160/95	1
15	17470000001079	HEATER	1
16	17470000001085	HEATER	1
17	17470000002315	MICROSWITCH INTERLOCK	2
18	17470000008424	MICROSWITCH MONITOR	1
19	12170000007317	LEVER SWITCH	1
20	11002014000043	MOTOR TRAY	1
21	12570000000020	COUPLER	1
22	12970000000284	RACK	1
23	122700000003329	TRAY METAL	1
24	12970000000324	RACK	1
25	N.P.N	BRACKET	
26	11002017000177	MOTOR FAN	1
27	12570000000937	LAMP GLASS	2
28	Part of item 30	FAN COOLING	1
29	Part of item 30	SLEEVE MOTOR AXLE	1
30	122700000030918	COVER HEATER ASSY	1
31	Part of item 30	INSULATOR HEAT *B	1
32	Part of item 30	FIBERGLASS	1
33	Part of item 30	FAN CONVECTION	1
34	Part of item 30	MOTOR CONVECTION	1
35	Part of item 30	HEATER SHEATH *B	1
36	12270000B51668	ASS'Y DOOR:	1
38	12970000A00613	HANDLE	1
41	17270000B67535	C/PANEL ASS'Y:	1
			1
N.I	12970000000031	DOOR SHAFT	2
N.I	12270000015304	HINGE ASSEMBLY	2
N.I	EVEM645DSDPCB	PCB ASS'Y	1

<b>Publication Version Control Chart</b>		
<b>Issue Number</b>	<b>Reason</b>	<b>Date</b>
1	Original Document	29/01/2019