

# Electrolux

ELECTROLUX HOME PRODUCTS PTY LTD

ABN 51 004 762 341

Technical Publication N° DW403

Issue: 2  
Date: 06/15

## ***ELECTROLUX ELECTRONIC DISHWASHER***

**TO BE USED IN CONJUNCTION WITH  
CIRCUIT and WIRING DIAGRAM PUBLICATION - DW300.**

**MODEL:**

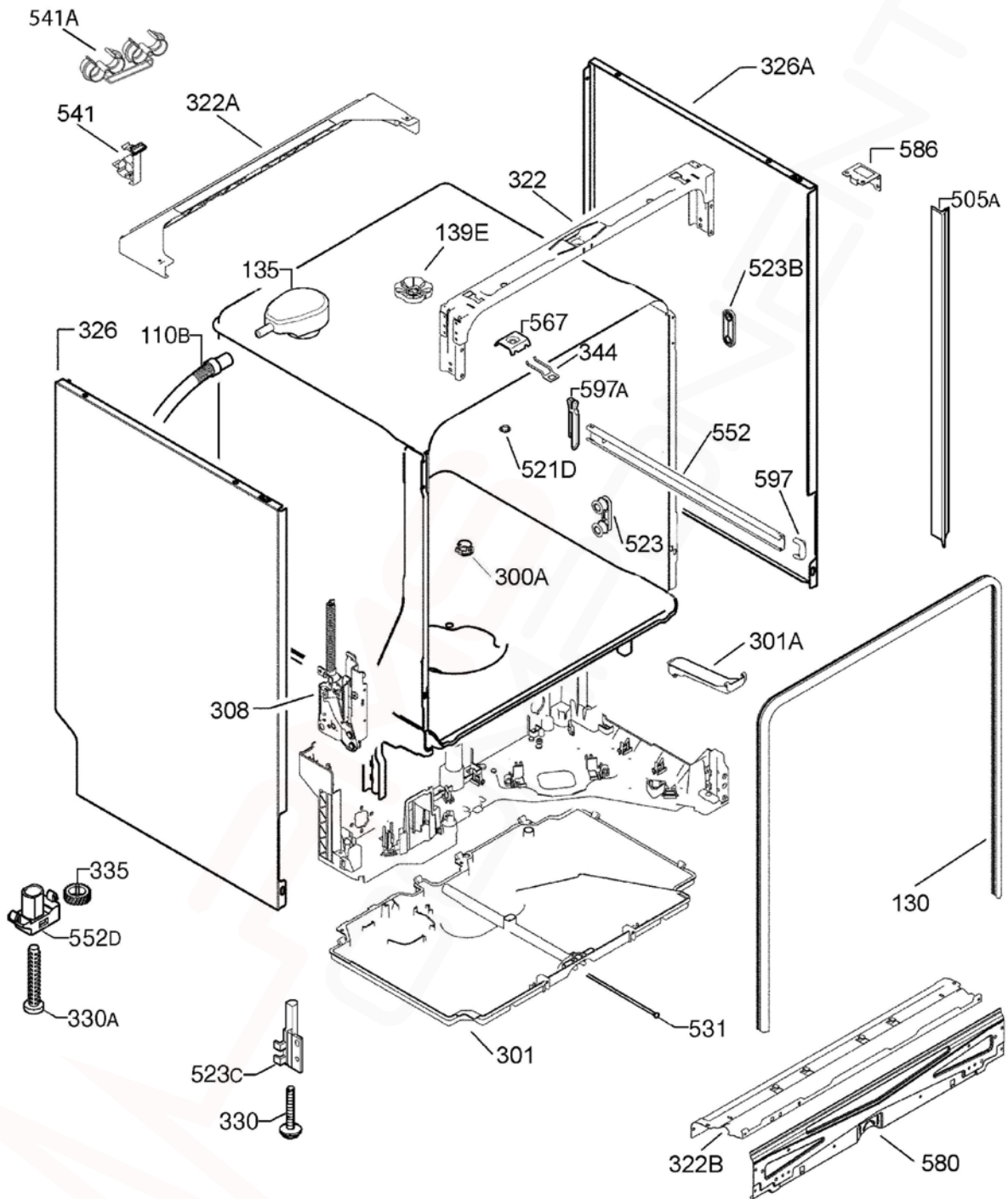
**ESL6610RO  
PNC 911437033 01**

<b>VARIANT CHANGE SUMMARY</b>	
-------------------------------	--

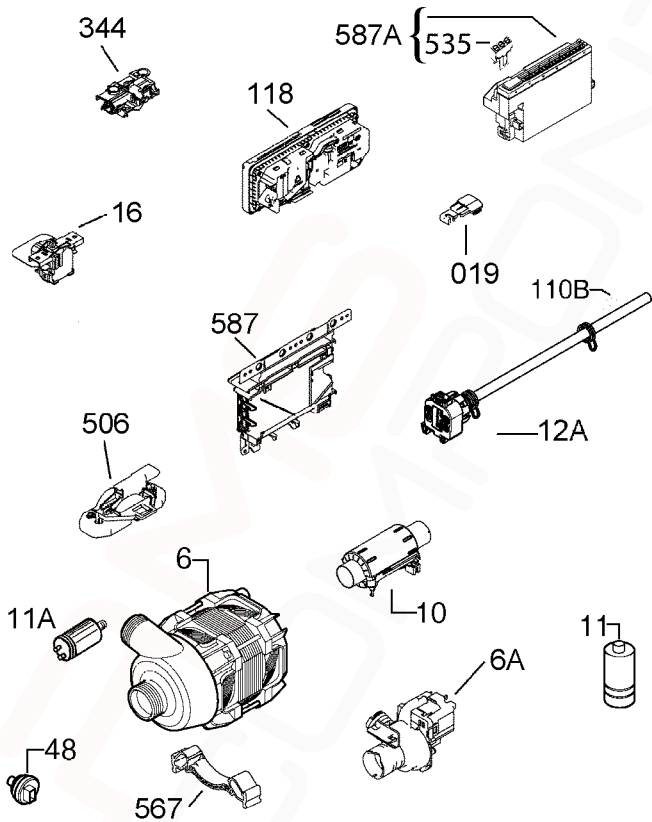
<b>01</b>	Drying Activator, Spray Arm Top Nut, Wheel Support Kit, Door Outer – Zinc, Mounting Kit, Drain Pump, Float Switch Assy, Bracket Motor Mount, PCB, Hose Water Softener, Seal Channel Drainage, Container Cup Small, Manifold Inner & Sump
-----------	--

<b>SAFR</b>	
-------------	--

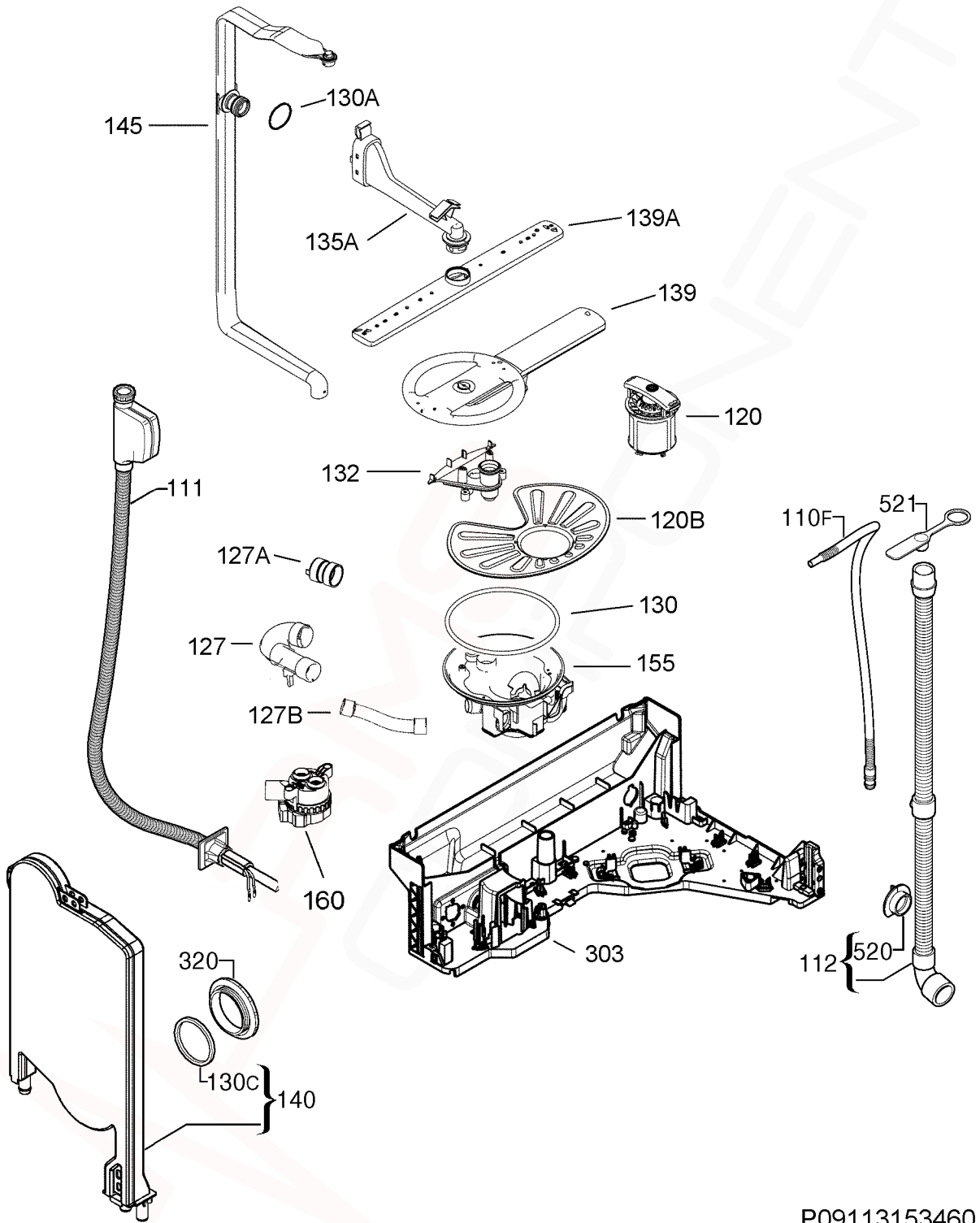
ESL6610RO/911437033 01	Mar 2014
------------------------	----------



ITEM	PART N°	DESCRIPTION	Ex. P09113181509	QTY
110B	<b>1172814202</b>	Pipe Drying Grey x 795mm Long		1
130	<b>1171580002</b>	Sealing Door x 1800mm Long		1
135	<b>1171458233</b>	Vent Drying Activator		1
139E	<b>1119307013</b>	Nut Fastening Top Spray Arm		1
300A	<b>1119183000</b>	Cover Top Spray Rose		1
301	<b>1171563024</b>	Tray Bottom Spillage		1
301A	<b>4055138376</b>	Kit Overflow Hose		1
308	<b>4055150280</b>	Kit Hinge Left/Right		1
322	<b>1171564733</b>	Crossbar Front Upper		1
322A	<b>1172379115</b>	Crossbar Back Upper		1
322B	<b>1171561051</b>	Cross Piece Front Bottom		1
326	<b>1174320224</b>	Side Panel Left Zinc Plated		1
326A	<b>1174320323</b>	Side Panel Right Zinc Plated		1
330	<b>1526617020</b>	Adjustable Foot Front x 122mm Long		2
330A	<b>1173632009</b>	Adjustable Foot Central x 129mm Long		1
335	<b>1527142002</b>	Cog Leg Adjustable Central		1
344	<b>1522344058</b>	Latch Door Lock		1
505A	<b>1522222635</b>	Trim Side x 609mm Long		2
521D	<b>1526576101</b>	Cover Latch Hole		1
523	<b>50299970009</b>	Support Roller Kit Pkt 4		1
523B	<b>1521220-10/1</b>	Bracket Base Roller		4
523C	<b>1526315047</b>	Support Foot Left		1
	<b>1526315138</b>	Support Foot Right		1
531	<b>1171738006</b>	Screw Adjusting Foot Central		1
541	<b>N.P.A.</b>	Clamp Hose		-
541A	<b>N.P.A.</b>	Clamp Hose Double		-
552	<b>1171989005</b>	Rail Basket Upper		2
552D	<b>1173633007</b>	Guide Foot Central Rear		1
567	<b>1523236030</b>	Nut Speed Clip		1
580	<b>1171654120</b>	Panel Front Lower		1
586	<b>1172870014</b>	Bracket Fixing Top		2
597	<b>1520479401</b>	Stop Basket Upper - Front		2
597A	<b>8996461234057</b>	Stop Basket Upper - Rear		2
N.I.	<b>1170897308</b>	Cover Terminal		1
N.I.	<b>1173722008</b>	Sponge Water Tank		1
N.I.	<b>1174277002</b>	Grommet Side Mounting		2
N.I.	<b>1174285005</b>	Template Built-in ESL6613RO		1



ITEM	PART N°	DESCRIPTION Ex. P09113097255	QTY
6	<b>140000397020</b>	Pump Circulation Complete 2800RPM	1
6A	<b>140000443022</b>	Pump Drain 50Hz	1
10	<b>50297618006</b>	Heater 230V/2000W Ø32mm	1
11	<b>3286023506</b>	Capacitor Interference 0.47µf	1
11A	<b>1115927012</b>	Capacitor Motor 3µf	1
12A	<b>1174745107</b>	Switch Pressure Analogic Complete	1
16	<b>1113337024</b>	Switch Main Auto Off	1
019	<b>1174528016</b>	Lamp Door Indicator	1
48	<b>1113348005</b>	Sensor Turbidity Optical	1
110B	<b>1526815707</b>	Hose Switch Pressure x 260 Ø10	1
118	<b>140000775019</b>	Dispenser Detergent Reed	1
344	<b>1113150401</b>	Lock Door Assembly	1
506	<b>140000565048</b>	Switch Float Assembly	1
535	<b>1380140002</b>	Indicator Display White EDW1953	1
567	<b>1171934019</b>	Support Motor Rubber	1
587	<b>973911437033005</b>	Board Configured EDW1xxx	1
587A	<b>1380163103</b>	Board User Interface White EDW1953	1
N.I.	<b>1114038019</b>	Harness Wiring Main Electronic	1
N.I.	<b>1114039165</b>	Wiring Harness Assembly	1
N.I.	<b>1170862310</b>	Cord Power AUS/NZ 10A	1
N.I.	<b>1171864042</b>	Cover Wiring Harness	1
N.I.	<b>1173704006</b>	Mount Pump Drain	1
N.I.	<b>140000322028</b>	Harness Main Board	1
N.I.	<b>50286439000</b>	Screw 4x40 TSP AF CP	-



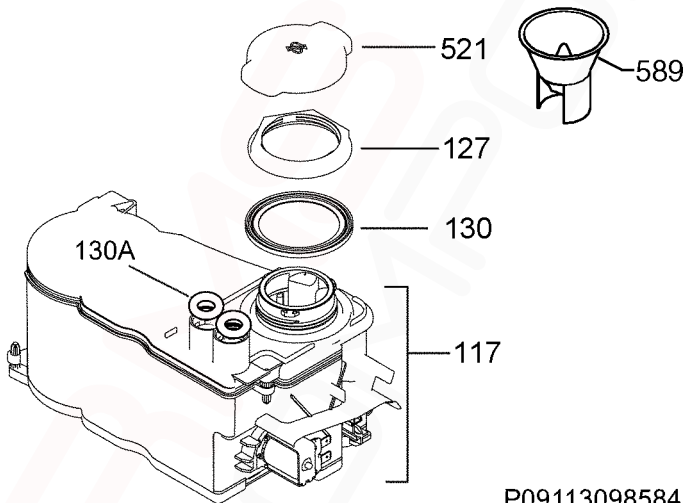
ITEM	PART N°	DESCRIPTION	Ex. P09113153460	QTY
110F	<b>1118698701</b>	Ventilating Tube ACTIVE x 1600mm Long		1
111	<b>4055125068</b>	Inlet Hose Aqua-Control x 1800mm Long		1
112	<b>1527820300</b>	Discharge Hose Installation		1
120	<b>1119161105</b>	Drain Filter Assembly		1
120B	<b>1119209011</b>	Filter Flat		1
127	<b>1119164018</b>	Hose Sump Heater		1
127A	<b>1119165007</b>	Hose Heater Circulation Pump		1
127B	<b>8079302017</b>	Hose Water Softener Sump		1
130	<b>1119186003</b>	O-Ring Sump		1
130A	<b>1380235018</b>	Seal Channel Drainage		1
130C	<b>50659231000</b>	Round Seal Container Cup		1
132	<b>1119158119</b>	Lower Spray Arm Support		1
135A	<b>140000409015</b>	Channel Drainage Grey Complete		1
139	<b>1119208211</b>	Lower Spray Arm Grey x 322.6mm Long		1
139A	<b>1119159315</b>	Upper Spray Arm Grey x 450mm Long		1
140	<b>1170481715</b>	Tank Water Small		1
145	<b>1119447157</b>	Manifold Inner Grey x 691.9mm Long		1
155	<b>1119151296</b>	Sump Assembly		1
160	<b>1113161010</b>	Flow Control Regulator		1
303	<b>1171581026</b>	Basement		1
320	<b>1526272107</b>	Grill Vapour Outlet Dark Grey		1
520	<b>N.P.A.</b>	Flange Discharge Pipe		-
521	<b>N.P.A.</b>	Stopper Drainage Hose		-
N.I.	<b>1400000592015</b>	Sealing Pressure Switch		1
N.I.	<b>1529175109</b>	Fixing Clamp Sensor 35.6		1

If a Customer needs to extend their Drain Hose, order the following components:  
**0571400142 Hose Drain (2M length), 0182200002 Ferrule Hose Joiner (19mm)**  
and 2 x **W011 Clamp**.

For extensions less than 2 metres, use **ES5323K Kit Hose Flex Drain (1M)**

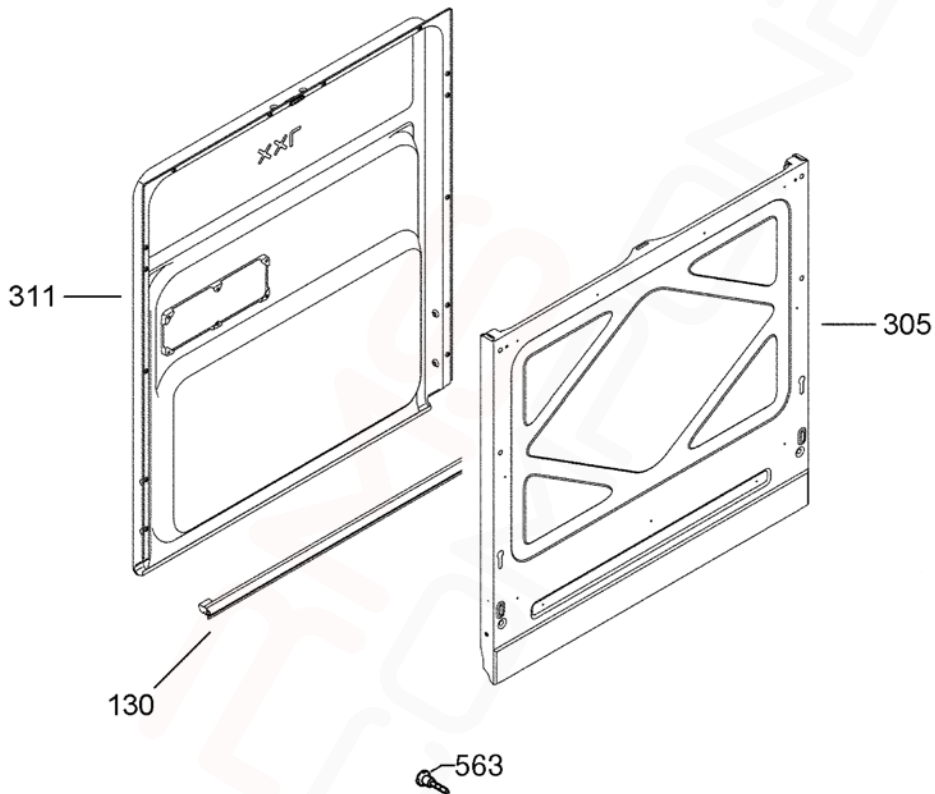
**NOTE:** Total Drain Hose length must not exceed 4 metres.



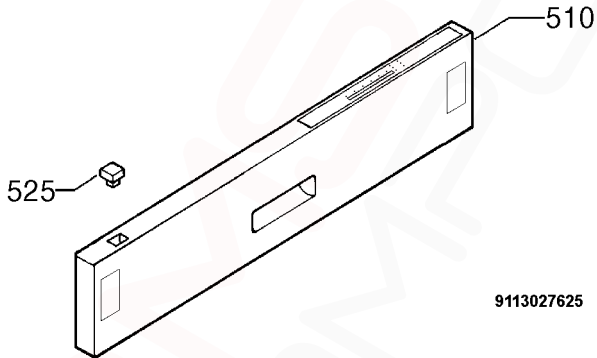


P09113098584

<b>ITEM</b>	<b>PARTN°</b>	<b>Description</b>	<b>Ex. View P09113098584</b>	<b>QTY</b>
117	<b>1174849008</b>	Water Softener Complete		1
127	<b>1119195103</b>	Nut Water Softener		1
130	<b>1119196010</b>	Gasket Water Softener		1
130A	<b>1526505-00/1</b>	Grommet Decalcifier H=13mm		1
521	<b>1119192100</b>	Cap Water Softener		1
589	<b>1172107300</b>	Filling Funnel Dishwasher Salt Transparent		1

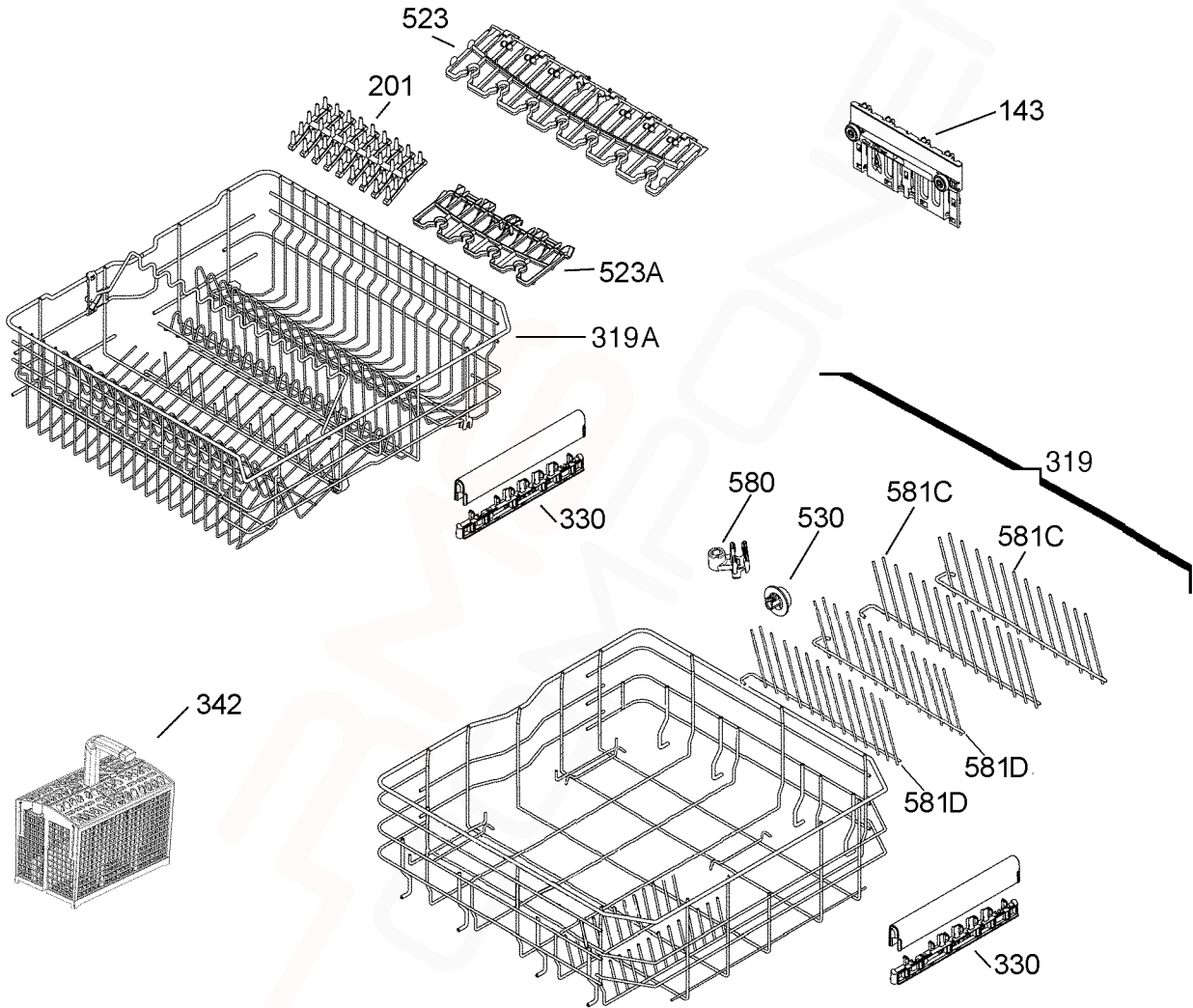


<b>ITEM</b>	<b>PART N°</b>	<b>DESCRIPTION</b>	<b>Ex. P09113090739</b>	<b>QTY</b>
130	<b>1173419001</b>	Door Gasket Bottom Black x 546mm Long		1
305	<b>1171649492</b>	Door Zinc - Plated		1
311	<b>4055079539</b>	Inner Door		1
563	<b>50290016-00/0</b>	Peg Panel		2
N.I.	<b>8072010013</b>	Plastic Steam Protection		1
N.I.	<b>1173234004</b>	Plastic Rivet Door Ø12mm x 19mm Long		2
N.I.	<b>8079527068</b>	Kit Built-In		1



9113027625

<b>ITEM</b>	<b>PART N°</b>	<b>DESCRIPTION</b>	<b>Ex. P09113027625</b>	<b>QTY</b>
510	<b>1174561041</b>	Control Panel Inox Electrolux		1
525	<b>1171114109</b>	Push Button On/Off Inox		1



**BASKET  
ASSEMBLY**

<b>ITEM</b>	<b>PART N°</b>	<b>DESCRIPTION Ex. P09113088404</b>	<b>QTY</b>
143	<b>1173884428</b>	Adjustment Right	1
	<b>1173884527</b>	Adjustment Left	1
201	<b>1119349312</b>	Spikes Rubber	2
319	<b>1171745126</b>	Dishwasher Basket Bottom Dark Grey	1
319A	<b>1119234712</b>	Dishwasher Basket Upper	1
330	<b>1380176014</b>	Handle D/W Basket Rear Grey	1
	<b>1380192011</b>	Handle D/W Basket Front Lt. Grey	1
342	<b>1119330213</b>	Cutlery Basket Grey 254x258x133mm	1
523	<b>1172468215</b>	Support Cup Grey Long	1
523A	<b>1172467217</b>	Support Cup Grey Short	2
530	<b>4055072138</b>	Wheel Kit (8 Pieces)	1
580	<b>1171867102</b>	Fixing Clamp Partition	4
581C	<b>1172588004</b>	Partition Left x 333mm Long	1
	<b>1172588103</b>	Partition Right x 333mm Long	1
581D	<b>1172589002</b>	Partition Left x 306mm Long	1
	<b>1172589101</b>	Partition Right x 306mm Long	1





ITEM	PART N°	DESCRIPTION	Ex.
1	<b>ACC017</b>	Scalex Plus Descaler Sachet 75gm	
2	<b>ACC100</b>	Detergent Dishwasher 1kg	
3	<b>ACC102</b>	Rinse Aid Additive 500mls	
4	<b>ACC103</b>	Descaler Powder 350g <b>(Dangerous Goods rules apply, min order Qty of 12)</b>	
N.I.	<b>ACC002</b>	Dishwasher Salt 1kg Pack	