



ELECTROLUX HOME PRODUCTS PTY LTD
ABN 51 004 762 341

Technical Publication N° DW109

Issue: 2
Date: 07/08

WEB SITE ADDRESS: www.partnship.com.au

ELECTROLUX
ELECTRONIC
DISHWASHER

| SECTION | PAGE N° |
|-----------------------------------------|----------------|
| OUTER PANEL & LINER ASSEMBLY | 2 - 3 |
| ELECTRICAL ASSEMBLY | 4 - 5 |
| WATER CIRCUIT ASSEMBLY | 6 - 7 |
| WATER SOFTENER ASSEMBLY | 8 - 9 |
| CONTROL PANEL & DOOR ASSEMBLY | 10 - 11 |
| BASKET ASSEMBLY | 12 - 23 |
| PROGRAMME CHART | 14 |
| WIRING DIAGRAM | 15 |
| CIRCUIT DIAGRAM | 16 |
| COMPONENT TESTING (SERVICE) | 17 |
| REGENERATION CYCLE | 17 - 18 |
| SAFETY FEATURES - CONTROLS/ALARMS | 18 - 20 |
| OPTIONS FOR IMPROVING WASH PERFORMANCE | 21 |
| COMPONENT DIAGNOSTICS TEST | 21 - 23 |
| FUNCTION DIAGNOSTICS CYCLE | 23 - 24 |
| TEST CYCLE (ABBREVIATED WASH PROGRAMME) | 25 - 26 |
| TABLE OF ALARM CODES | 27 |
| GENERAL DATA | 28 |

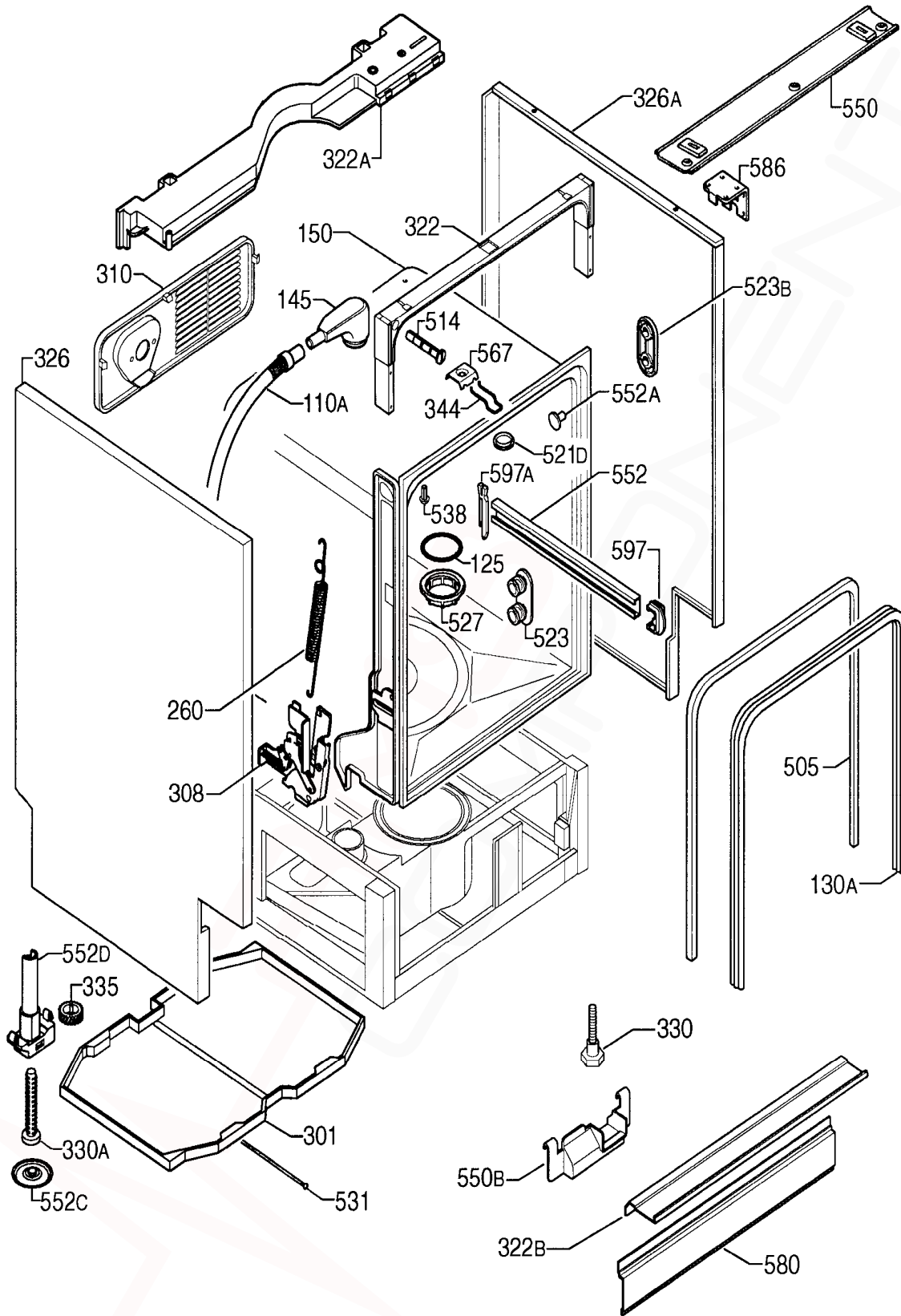
MODEL:

ESL6180

PNC: 911896073

MODEL: ESL6180

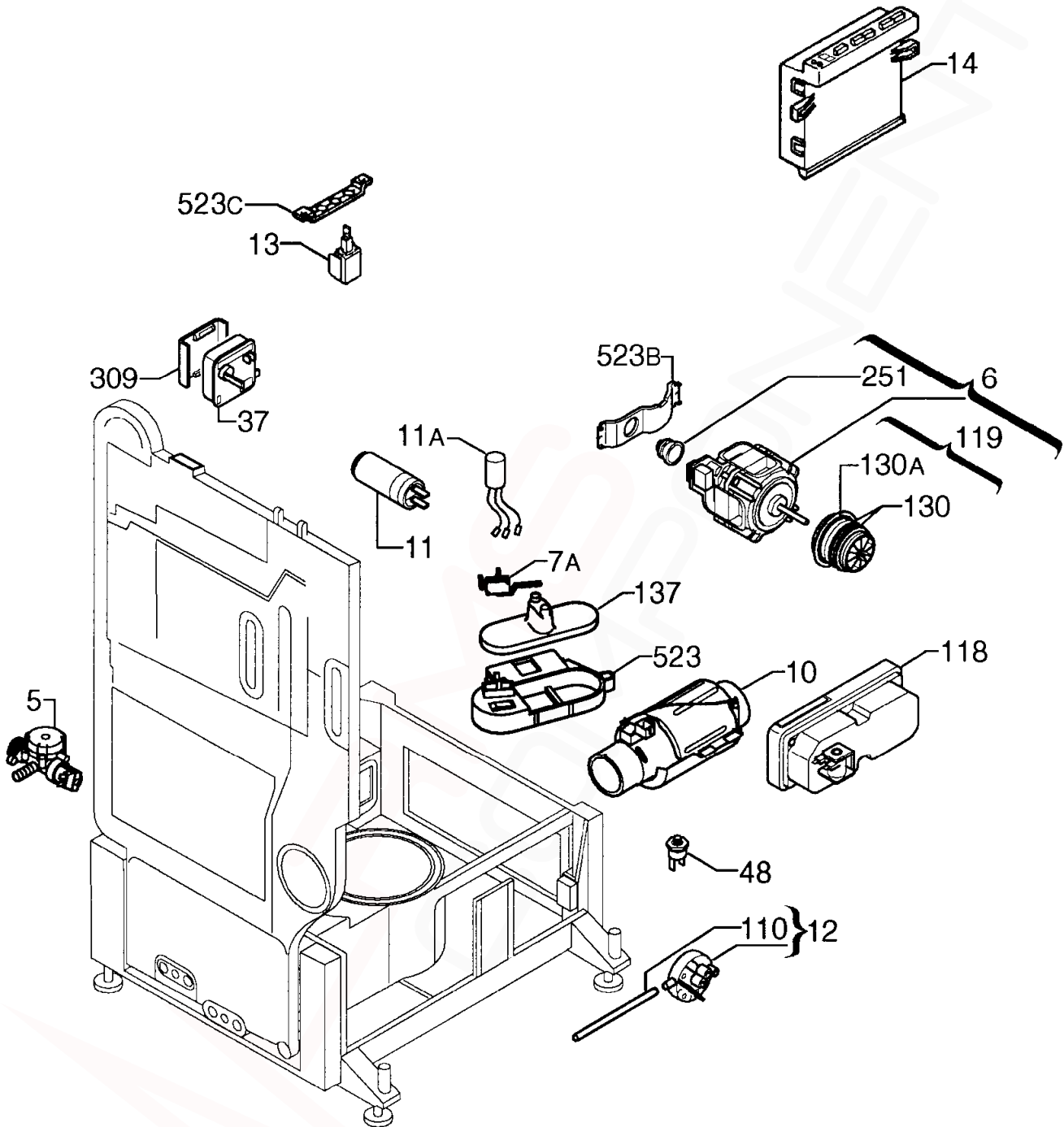
EX. VIEW DRAWING 3927
OUTER PANEL & LINER
ASSEMBLY



| ITEM | PART NUMBER | DESCRIPTION | Ex. 3927 | QTY |
|------|----------------------|------------------------------------|----------|-----|
| 110A | 1525390-00/9 | Tube, Manifold to Base | | 1 |
| 125 | 50249145-00/9 | "O" Ring, Ferrule, Manifold | | 1 |
| 130A | 1524445-01/0 | Sealing Sleeve, Outer | | 1 |
| 145 | 1523599-01/5 | Manifold, Drying | | 1 |
| 150 | N.P.N. | Liner Assembly | | 1 |
| 260 | 1524312-00/4 | Spring, Hinge | | 2 |
| 301 | 1523673-01/8 | Tray, Drip | | 1 |
| 308 | 50251714-00/7 | Hinge Kit, Door (LH/RH.) | | 2 |
| 310 | 1526379-00/1 | Flap, Support, Solenoid | | 1 |
| 322 | 1525280-16/8 | Crossbar, Front, Upper | | 1 |
| 322A | 1523519-15/3 | Crossbar, Back, Upper, | | 1 |
| 322B | 1523512-04/2 | Crossbar, Front, Bottom | | 1 |
| 326 | 1526790-00/9 | Panel, Side, LH. (White) | | 1 |
| 326A | 1526790-10/8 | Panel, Side, RH. (White) | | 1 |
| 330 | 1522017019 | Foot | | 2 |
| 330A | 1523477-01/4 | Leg, Central | | 1 |
| 335 | 1523261-00/4 | Gear Wheel | | 1 |
| 344 | 1522344-05/8 | Latch | | 1 |
| 505 | 1522337-02/9 | Trimming, Tub/Cabinet | | 1 |
| 514 | 1522520-03/8 | Socket, Adjustable | | 1 |
| 521D | 1526576-00/2 | Cover, Latch Hole | | 1 |
| 523 | 1522029-12/1 | Bracket and Roller Assembly (Grey) | | 4 |
| 523B | 1521220-03/6 | Bracket, Re-Enforcement, Roller | | 4 |
| 527 | 1523520-10/2 | Ferrule (Grey) | | 1 |
| 531 | 1523262-11/9 | Screw Adjusting, Central Foot | | 1 |
| 538 | 1522335-01/5 | Piece, Distance, Crosspiece, Rear | | 1 |
| 550 | 50252394-00/7 | Guard, Front, Top | | 1 |
| 550B | 1522345-03/0 | Protection, Wiring | | 1 |
| 552 | 1520512-05/2 | Rail, Basket, Upper | | 2 |
| 552A | 1525272-21/5 | Guidance, Inner Door (Grey) | | 2 |
| 552C | 1523242-00/4 | Pad, Slide, Leg | | 1 |
| 552D | 1523777-01/7 | Guide Rail, Central Foot | | 1 |
| 567 | 1523236-02/2 | Clamp, Door Latch (Plaque) | | 1 |
| 580 | 1523513-04/0 | Panel, Front, Bottom | | 1 |
| 586 | 1523160-13/1 | Bracket, Fixing (Top) | | 2 |
| 597 | 1520479-10/4 | Cap, Rail End (Grey) | | 2 |
| 597A | 1525376-20/6 | Stop, Rail End (Grey) | | 2 |

MODEL: ESL6180

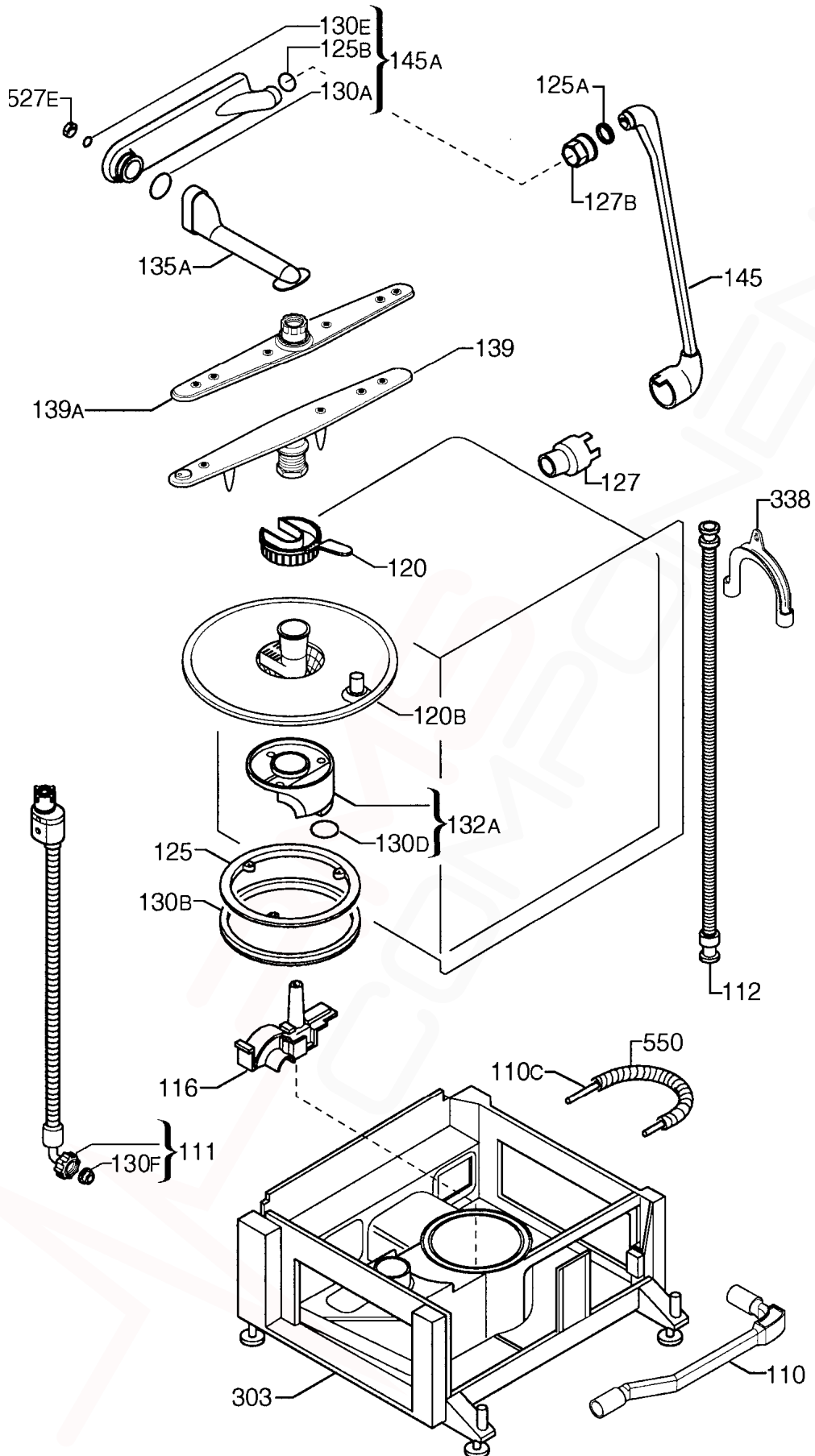
EX. VIEW DRAWING 3941
ELECTRICAL ASSEMBLY



| ITEM | PART NUMBER | DESCRIPTION | Ex. 3941 | QTY |
|------|----------------------|-----------------------------------------------|----------|-----|
| 5 | 1520233-00/6 | Valve, Anti-Overflow | | 1 |
| 6 | 50267491-00/4 | Pump Assy. Kit (Inc. Items 130, 130A and 251) | | 1 |
| 7A | 1520393115 | Switch, Micro, Anti-Overflow | | 1 |
| 10 | 1115773-00/2 | Element, Heater (230V - 2100W) | | 1 |
| 11 | 1522966-10/8 | Capacitor (4 μ F) | | 1 |
| 11A | 1521029-10/6 | Capacitor, Anti-Interference | | 1 |
| 12 | 1529790-70/9 | Switch, Pressure (Inc. Item 110) | | 1 |
| 13 | 1520646025 | Switch, On/Off | | 1 |
| 14 | 1525557-50/8 | Controller Assembly, Electronic | | 1 |
| 37 | 1521594000 | Box, Junction | | 1 |
| 48 | 50261253-00/4 | Sensor, Temperature, Element | | 1 |
| 110 | 0055250455 | Tube, Pressure Switch | | 1 |
| 118 | 1525531-30/5 | Dispenser, Detergent (Grey) | | 1 |
| 119 | 50267511-00/9 | Impellers Assembly (Inc. Items 130 & 130A) | | 1 |
| 130 | 1520292002 | Gasket, Pump, Front, 50/39 mm. Dia. | | 1 |
| 130A | 1520292101 | Gasket, Pump, Front, 63/09 mm. Dia. | | 1 |
| 137 | 1520170-03/4 | Float | | 1 |
| 251 | 1522489-02/8 | Buffer, Back, Motor | | 1 |
| 309 | 1522164001 | Cover, Box, Junction | | 1 |
| 523 | 1520169051 | Housing, Float | | 1 |
| 523B | 1523700-00/1 | Bracket, Support, Motor | | 1 |
| 523C | 1520645019 | Bracket, Support, Push Button | | 1 |
| | | | | |
| NI | 1523902-00/3 | Wiring, Anti-Interference | | 1 |
| NI | 1525558-05/0 | Harness, Main PCB | | 1 |
| NI | 1525448-00/5 | Harness, Wiring, Bottom | | 1 |

MODEL: ESL6180

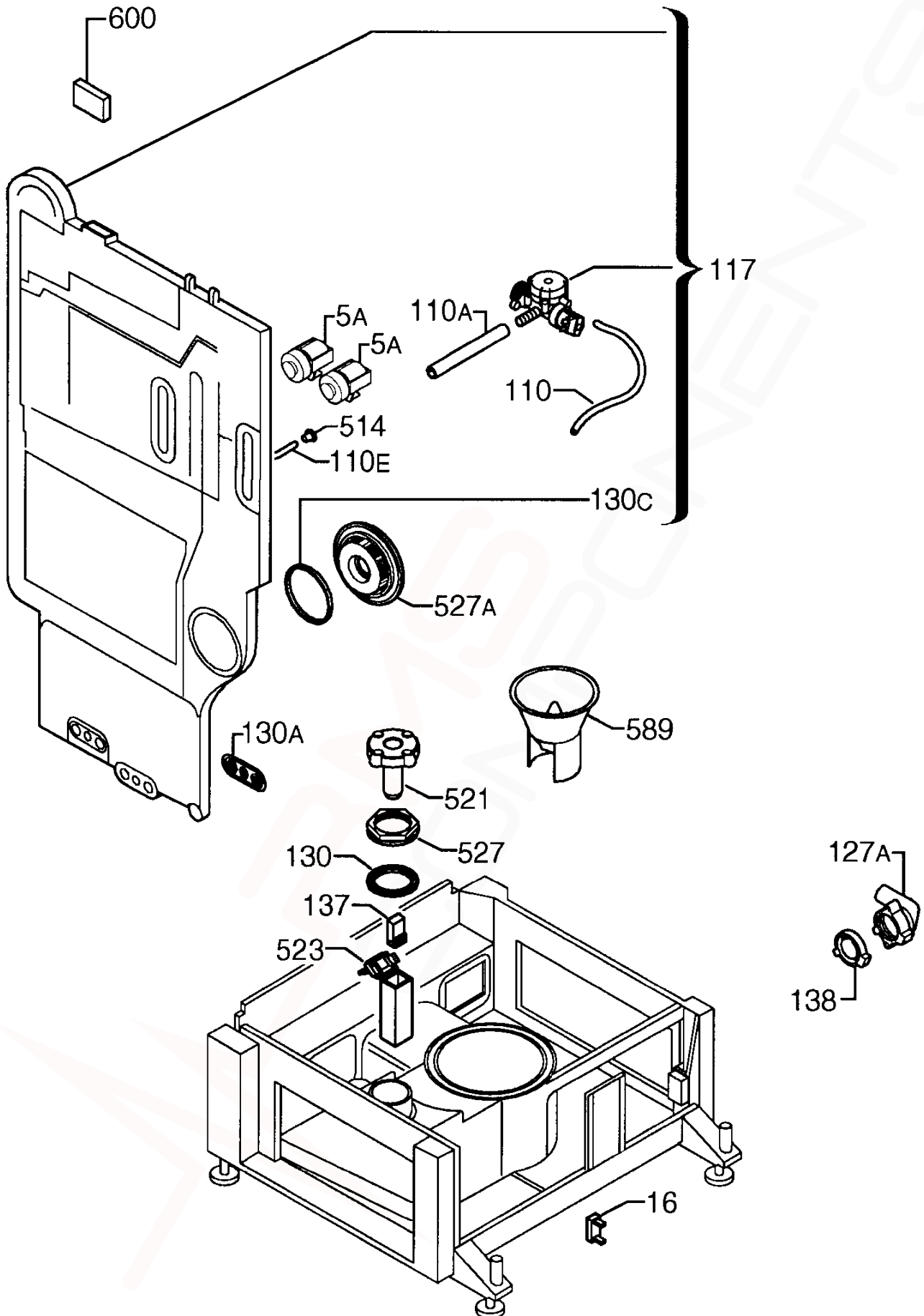
EX. VIEW DRAWING 3890
WATER CIRCUIT ASSEMBLY



| ITEM | PART N° | DESCRIPTION | Ex. 3890 | QTY |
|------|----------------------|--------------------------------------|----------|-----|
| 110 | 1529849-31/5 | Hose, Connecting, Stand | | 1 |
| 110C | 1520464-31/2 | Tube, Water Balance | | 1 |
| 111 | 1522221-12/4 | Hose, Inlet, Safety (1500 mm) | | 1 |
| 112 | 0571 400 142 | Hose, Drain | | 1 |
| 116 | 1522410-20/6 | Scroll, Wash | | 1 |
| 120 | 1524505-10/2 | Filter, Drain Pump (Grey) | | 1 |
| 120B | 1525490-12/2 | Filter, Column (Grey) | | 1 |
| 125 | 1522342-02/9 | Retainer, Sump | | 1 |
| 125A | 50248856-00/2 | "O"-Ring, Manifold, Outer | | 1 |
| 125B | 50227938-00/3 | "O"-Ring, Manifold, Inner | | 1 |
| 127 | 1524422-03/5 | Connector, Water Sump to Heater | | 1 |
| 127B | 1523118-10/5 | Connector, Manifold, (Grey) | | 1 |
| 130A | 1523119-01/2 | Seal, Channel, Drainage | | 1 |
| 130B | 1522414-02/6 | Gasket, Sump | | 1 |
| 130D | 1520772003 | Gasket, Column | | 1 |
| 130E | 1522802-00/6 | Sealing Strip | | 1 |
| 130F | 1240151009 | Gasket, Hose | | 1 |
| 132A | 1529841-80/9 | Column and Gasket Assembly | | 1 |
| 135A | 1524902-40/8 | Channel, Drainage (Grey) | | 1 |
| 139 | 1524786-30/6 | Arm, Bottom Spray (Grey) | | 1 |
| 139A | 1524744-10/7 | Arm, Upper Spray (Grey) | | 1 |
| 145 | 1524421-02/9 | Manifold, Heater Element | | 1 |
| 145A | 1529844-40/7 | Manifold Assy., Horizontal (Grey) | | 1 |
| 303 | N.P.N. | Stand Assembly | | 1 |
| 338 | N.P.N. | NOT USED IN THIS MODEL | | 0 |
| 527E | 50239993-00/4 | Nut, Water Distributor | | 1 |
| 550 | 1524982-00/4 | Tube, Protection, Water Balance Tube | | 1 |

MODEL: ESL6180

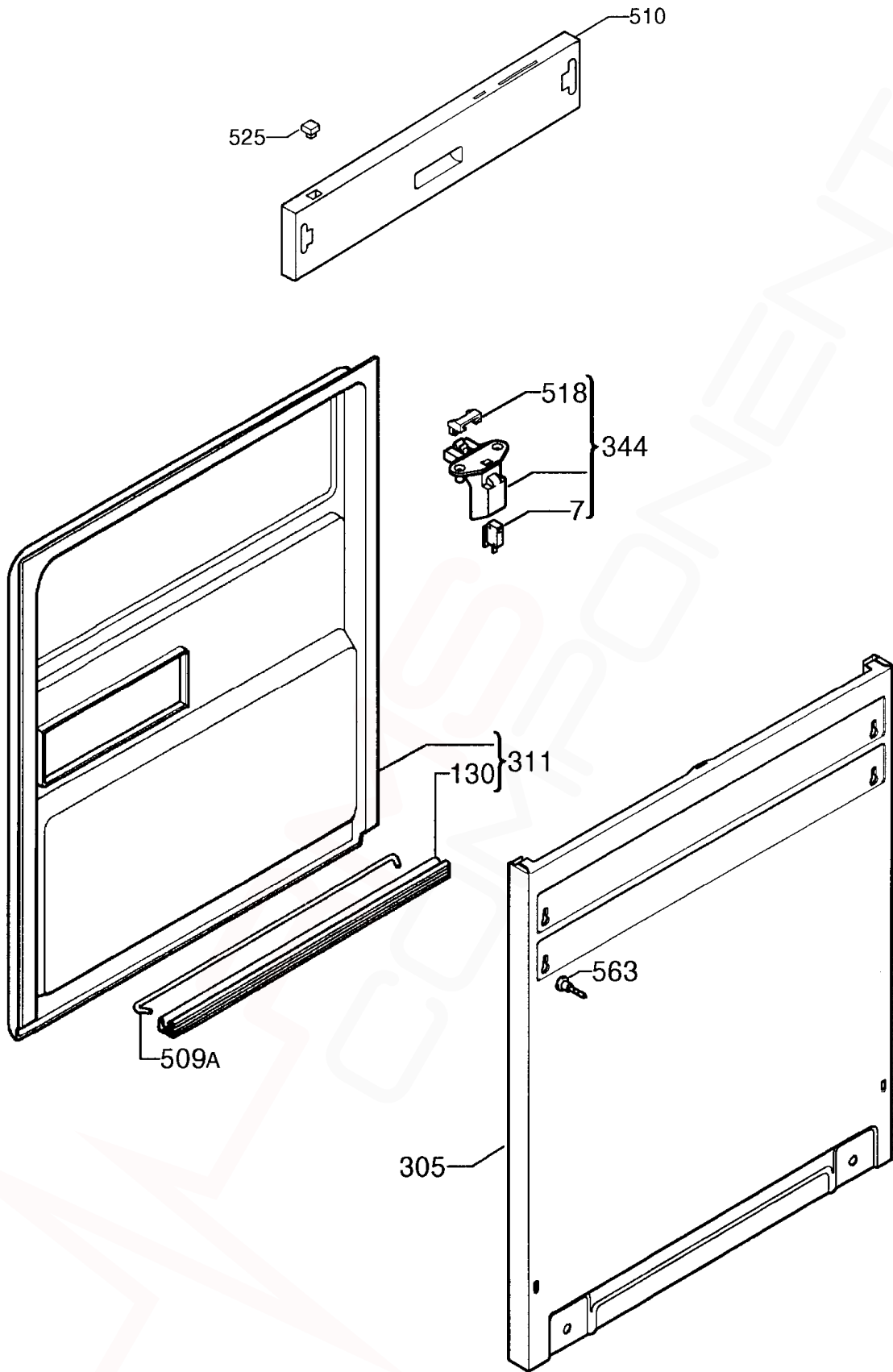
EX. VIEW DRAWING 3924
WATER SOFTENER ASSEMBLY



| ITEM | PART NUMBER | DESCRIPTION | Ex. 3924 | QTY |
|------|----------------------|--------------------------------------------------------------|----------|-----|
| 5A | 1529746-70/1 | Valve, Electric | | 2 |
| 16 | 1523184-00/8 | Sensor, Salt | | 1 |
| 110 | 1529902-10/6 | Hose, Valve | | 1 |
| 110A | 1529902-20/5 | Hose | | 1 |
| 110E | 1520465103 | Tube, Regeneration Tank Drain (250 mm) | | 1 |
| 117 | 1524624-20/0 | Softener, Water (Inc. Items 5A, 110, 110A, 110E, 130C & 514) | | 1 |
| 127A | 1522340-03/1 | Connector, Outlet Valve | | 1 |
| 130 | 1525274-00/5 | Seal, Decalcifier | | 1 |
| 130A | 1522338-00/1 | Gasket, Regen. Tank | | 1 |
| 130C | 50659231-00/0 | Seal, Round | | 1 |
| 137 | 1522447-00/0 | Float | | 1 |
| 138 | 1522418-03/5 | Membrane, Outlet Valve | | 1 |
| 514 | 2239010050 | Bushing | | 1 |
| 521 | 1520251-60/2 | Bung, Decalcifier, (Grey) | | 1 |
| 523 | 1522346-02/0 | Support, Float | | 1 |
| 527 | 1520250-10/9 | Ferrule, Decalcifier, (Grey) | | 1 |
| 527A | 1524050-40/6 | Ferrule, Active Dry (Grey) | | 1 |
| 589 | 1520328-40/0 | Funnel, (Grey) | | 1 |
| 600 | 1523692-02/6 | Sponge | | 1 |

MODEL: ESL6180

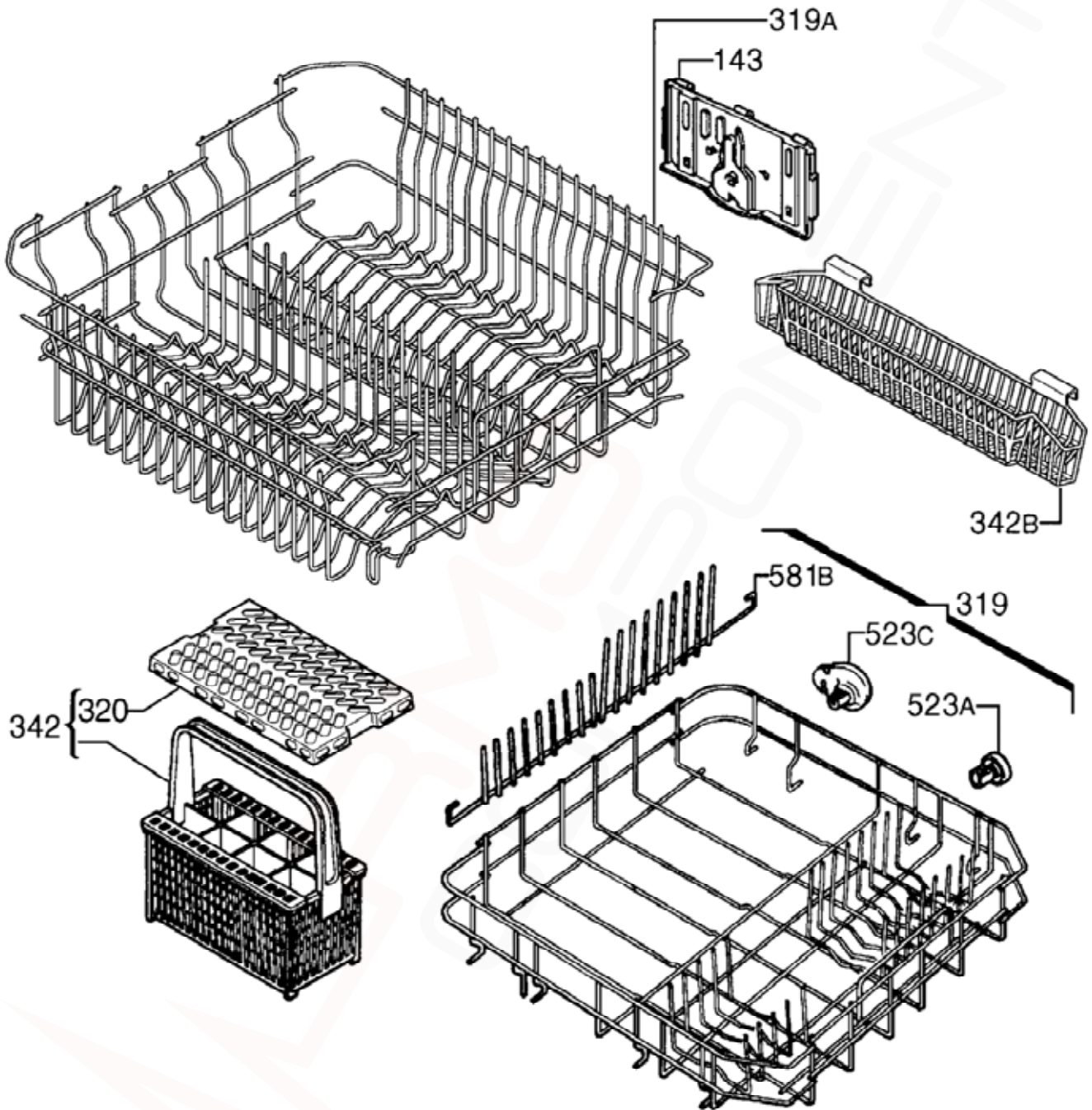
EX. VIEW DRAWING 3939
CONTROL PANEL and
DOOR ASSEMBLY



| ITEM | PART N° | DESCRIPTION | Ex. 3939 | QTY |
|------|----------------------|-----------------------------------------------------|----------|-----|
| 7 | 50253835-00/8 | Switch, Micro, Door | | 1 |
| 130 | 1520425008 | Gasket, Door Bottom, | | 1 |
| 305 | 1524571-05/4 | Panel, Door (White) | | 1 |
| 311 | 50267909-00/5 | Panel Assembly, Door, Inner (Inc. Items 130 & 509A) | | 1 |
| 344 | 50272150-00/9 | Latch Kit, Bridging Plug (Inc. Items 007 & 518) | | 1 |
| 509A | 1520419-14/2 | Tie, Hinge | | 1 |
| 510 | 1526270-20/0 | Panel, Control | | 1 |
| 518 | 1526414-00/6 | Plug, Bridging | | 1 |
| 525 | 1522518-40/4 | Button, Push | | 1 |
| 563 | 50253377-00/1 | Peg Kit, Door Panel (2 Per) | | 1 |
| | | | | |
| N.I. | 1525218-03/6 | Template | | 1 |
| N.I. | 1523774-00/6 | Guard, Base | | 1 |
| N.I. | 1525723-42/3 | Plate, Operating | | 1 |

MODEL: ESL6180

EX. VIEW DRAWING 3925
BASKET ASSEMBLY



| ITEM | PART N° | DESCRIPTION | Ex. 3925 | QTY |
|------|----------------------|-----------------------------------------------------------|----------|-----|
| 143 | 1522655-20/6 | Adjustment, Height. L/H. (Grey) | | 1 |
| | 1522655-30/5 | Adjustment, Height. R/H. (Grey) | | 1 |
| 319 | 1529791-53/3 | Basket Assy., Bottom (Grey)(Inc. Items 523A, 523C & 581B) | | 1 |
| 319A | 1525575-41/9 | Basket, Upper (Grey) | | 1 |
| 320 | 1525019-10/3 | Grate, Cutlery Basket (Grey) | | 1 |
| 342 | 1525593-00/8 | Basket Assy., Cutlery (Grey) | | 1 |
| 342B | 1524377-10/6 | Basket (Knife)(Grey) | | 1 |
| 523A | 50269757-00/6 | Roller Assembly, Lower Basket (Grey) | | 4 |
| 523C | 50269765-00/9 | Wheel Kit, Lower Basket (R/H)(Grey) | | 2 |
| | 50269766-00/7 | Wheel Kit, Lower Basket (L/H)(Grey) | | 2 |
| 581B | 1523142-10/5 | Partition, Adjustable (Grey) | | 1 |