



ELECTROLUX HOME PRODUCTS PTY LTD

Technical Publication N° DW151

Issue: 1
Date: 02/06

WEB SITE ADDRESS: <http://www.partnship.com.au>

ELECTROLUX
DISHWASHER

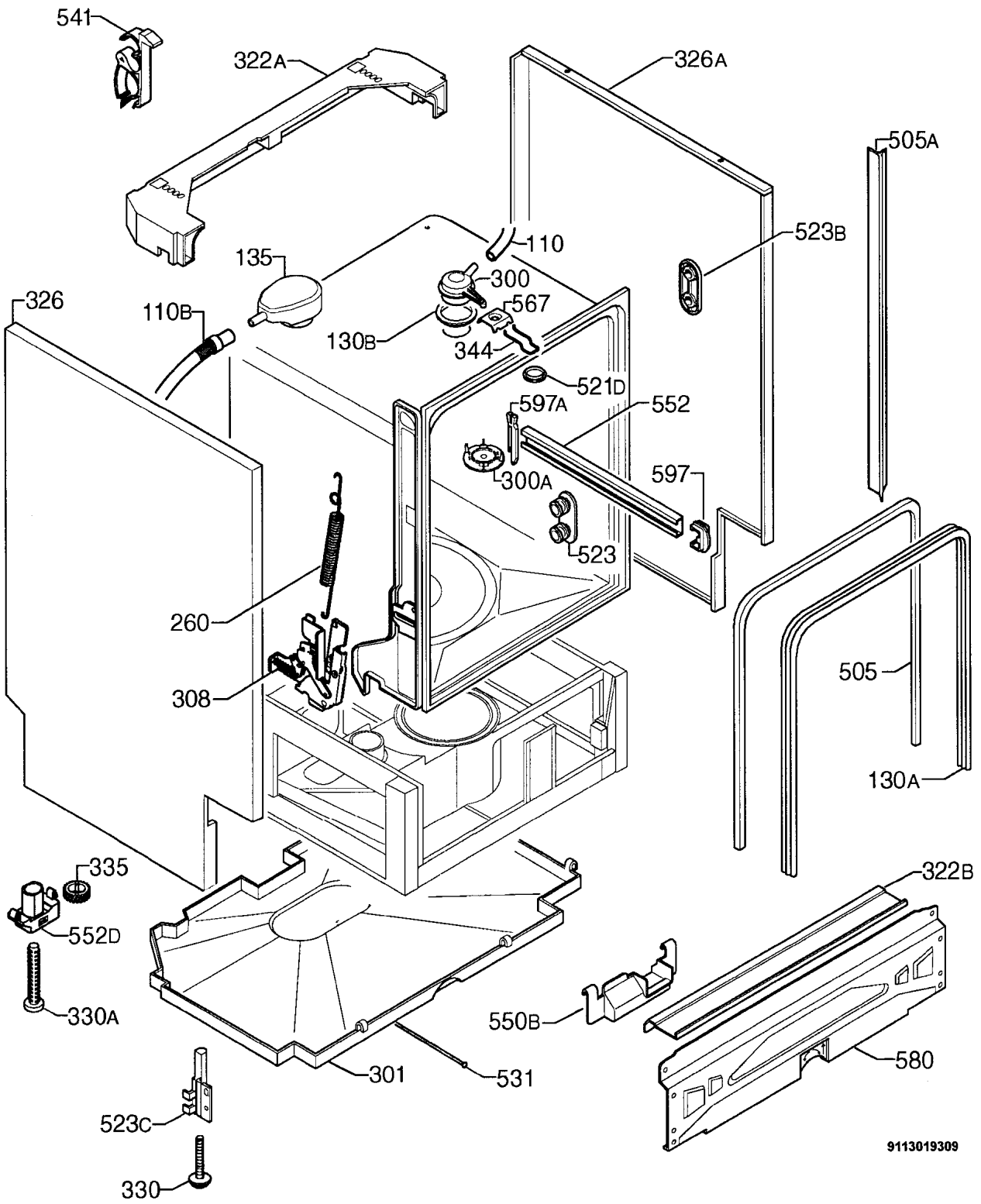
SECTION	PAGE N°
OUTER PANEL & LINER ASSEMBLY	2 & 3
ELECTRICAL ASSEMBLY	4 & 5
WATER CIRCUIT ASSEMBLY	6 & 7
WATER SOFTENER ASSEMBLY	8 & 9
CONTROL PANEL ASSEMBLY	10 & 11
BASKET ASSEMBLY	12 to 13
DOOR ASSEMBLY	14 & 15
PROGRAM TABLE	16
WIRING DIAGRAM	17
CIRCUIT DIAGRAM	18

MODEL:

ESL6163
PNC 911 986 227

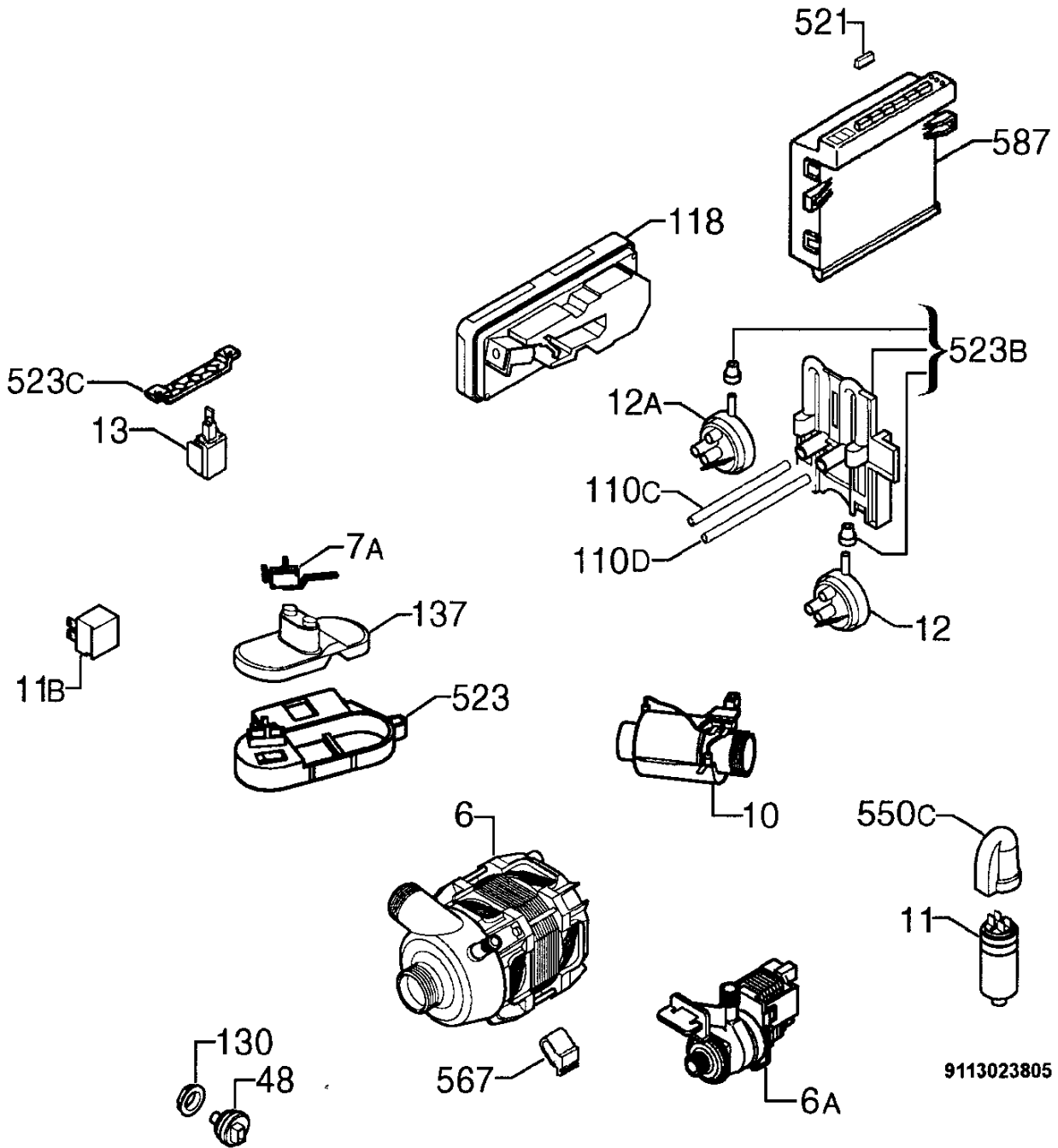
MODEL: ESL6163

EX. VIEW DRAWING 5571
OUTER PANEL & LINER ASSEMBLY

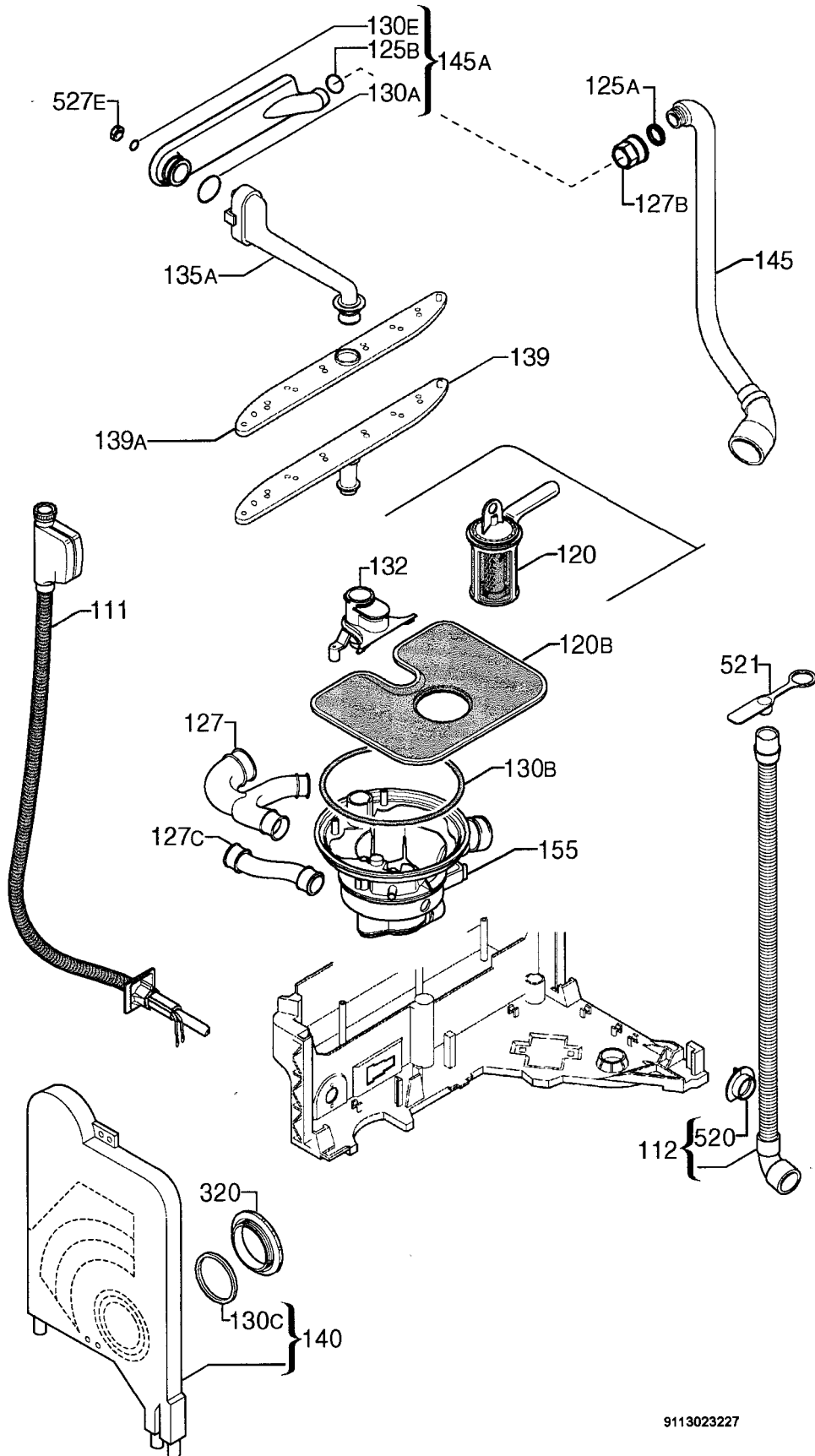


9113019309

ITEM	PART NUMBER	DESCRIPTION Ex. 5571	QTY
110	1528324-00/5	Tube, Sprayer, L=1350	1
110B	1527937-11/2	Hose, Drying, L=730	1
130A	1524445-20/0	Sealing Piece, Outer	1
130B	8996461225-60/0	Gasket, Sprayer	1
135	1527756-00/9	Air Guide, ACTIV DRYING	1
260	1528114-00/0	Spring, Door Hinge	2
300	8996461225-46/9	Body, Upper, Sprayer	1
300A	8996461225-56/8	Body, Bottom, Sprayer	1
301	1526298-03/7	Bottom, Cabinet	1
308	50286356-00/6	Kit, Door Hinge, Right-Left, DIVA/60-BIG--D/F	2
322A	1526299-02/7	Crossbar, Back, Upper	1
322B	1527256-10/9	Crossbar, Front, Bottom	1
326	1526825-60/7	Side Panel, Left, White, BIG	1
326A	1526825-70/6	Side Panel, Right, White, BIG	1
330	1526617-02/0	Adjustable Foot, Front	2
330A	1526994-00/7	Adjustable Foot, Central	1
335	1527142-00/2	Cog Wheel	1
344	1522344-05/8	Latch	1
505	1526715-10/5	Trimming, Tub, Cabinet	1
505A	1522222-60/1	Trimming, Side, L=642	1
521D	1526576-00/2	Hole Cover, Latch	1
523	50282756-00/1	Wheel Support Kit, Dark Grey, 4 Pcs.	4
523B	1521220-03/6	Re-Enforcement, Bracket	4
523C	1526315-03/9	Foot Support, Front, Left	1
523C	1526315-13/8	Foot Support, Front, Right	1
531	1523262-21/8	Adjusting Screw, Leg, Central	1
541	1526417-00/9	Hose Clamp	1
550B	1522345-03/0	Wiring Protection	1
552	1520512-05/2	Rail Basket, Upper	2
552D	1523698-04/9	Guidance, Foot, Central	1
567	1523236-03/0	Plaque	1
580	1526314-05/7	Door Lock, Front, Bottom, DIVA/60	1
597	1520479-20/3	Stopper, Front, Dark Grey	1
597A	8996461234-05/7	Stopper, Back, Dark Grey	2

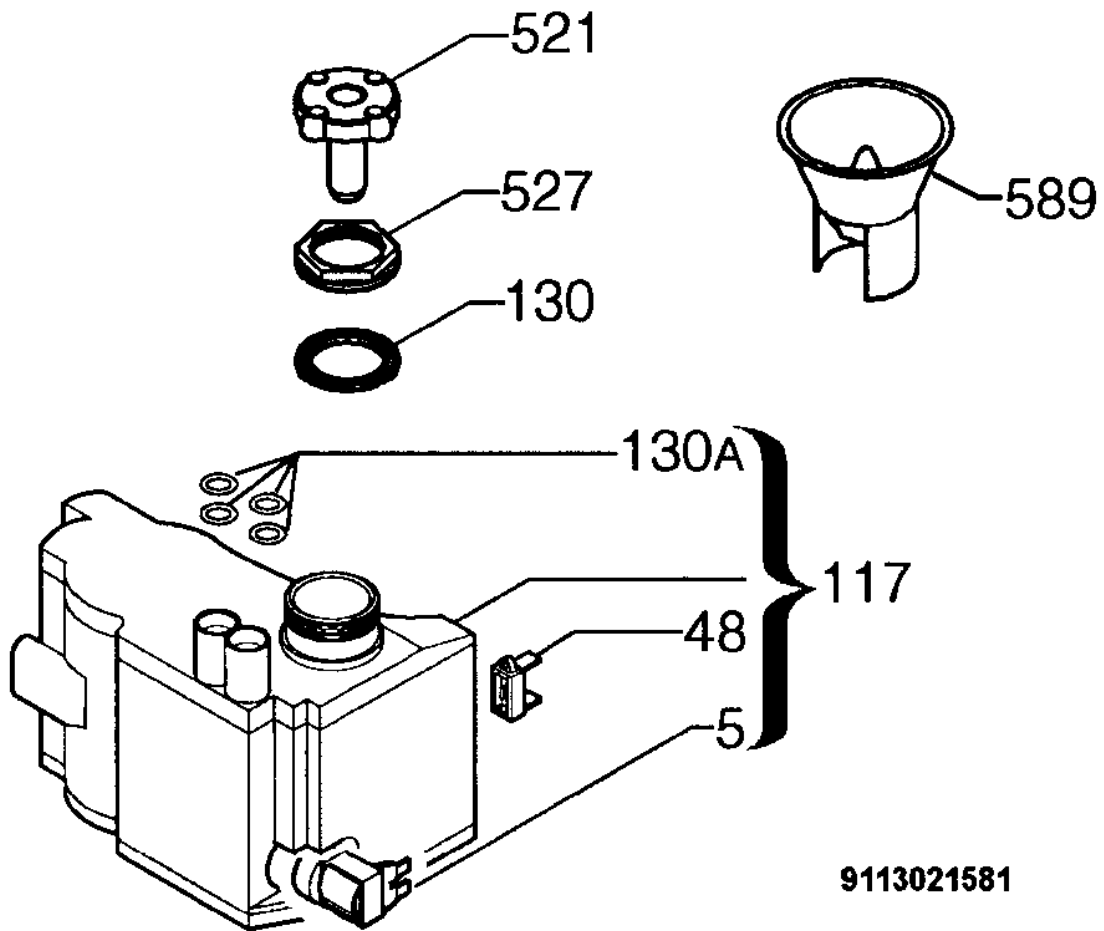


ITEM	PART NUMBER	DESCRIPTION Ex. 5570	QTY
6	1111469-00/1	Washing Motor, Tachometric	1
6A	50286272-00/5	Drain Pump, 50Hz	1
7A	1520393-11/5	Micro Switch, Anti Over Flow	1
10	50280071-00/7	Heater, 230V/2000W.-D.32mm.	1
11	1526356-11/6	Capacitor	1
11B	1526204-02/7	Interference Suppressor	1
12	1526370-02/6	Pressure Switch, Level, 65/45	1
12A	1526370-14/1	Pressure Switch, Safety, 123/98	1
13	1527532-00/4	Push Button Board, 1 Button	1
48	1115767-03/8	Temperature Sensor	1
110C	1526510-01/9	Hose, Pressure Switch, Safety, L=280	1
110D	1526510-11/8	Hose, Pressure Switch, Level, L=300	1
118	50285882-00/2	Kit, Dispenser, Detergent	1
130	1118535-03/6	Sealing Sleeve, Temperature Sensor	1
137	1526761-01/8	Float	1
521	1526601-30/5	Lamp Cap, Push Button Panel, Silver	1
523	1520169-06/9	Support, Float	1
523B	1526412-00/0	Holder, Pressure Switch	1
523C	1520645-01/9	Push Button Holder	1
550C	8996461234-30/5	Cover Cap	1
567	1118709-01/1	Rubber Damper, Circulation Pump	1
587	973911986227008	PCB, Configured, EDW1503--	1
NI	1526453-31/9	Power Cable, Australia	1



9113023227

ITEM	PART NUMBER	DESCRIPTION Ex. 5572	QTY
111	1526443-03/9	Inlet Hose, Water Block, L=1500	1
112	1526492-01/0	Outlet Tube, Complete, L=1930	1
120	1526612-02/1	Drain Filter, Complete	1
120B	1524360-00/3	Filter, Inox	1
125A	50282650-00/6	O-Ring, Manifold, Outer	1
125B	50227938-00/3	O-Ring, Manifold, Inner	1
127	1118796-00/0	Pipe Union, Y---D.= 32mm.	1
127B	1523118-20/4	Pipe Union, Manifold, Dark Grey	1
127C	1526716-01/2	Pipe Union, Decalcifier, Sump	1
130A	1523119-01/2	Seal, Channel Drainage	1
130B	8996461217-70/6	O-Ring, Sump	1
130C	50659231-00/0	Round Seal, Container Cup	1
130E	1522802-00/6	Sealing Strip	1
132	1118495-90/0	Column, Support, Lower Spray Arm	1
135A	50281041-00/9	Channel Drainage, Grey, Complete, DIVA 45/60	1
139	1526523-00/4	Lower Spray Arm, Light Grey, DIVA/60	1
139A	1526520-03/4	Spray Arm, Upper, Grey	1
140	1526296-13/0	Container Cup, Small, Electronic	1
145	1528192-00/6	Manifold, Outer	1
145A	1526386-20/4	Manifold, Horizontal, Dark Grey, DIVA/60	1
155	1527957-00/3	Sump, Pipe Union, Complete, DIVA/60	1
320	1526272-10/7	Grill, Vapour Outlet, Dark Grey	1
520	1526862-00/6	Flange, Discharge Pipe	1
521	1527389-00/9	Stopper, Drainage Hose	1
527E	50286080-00/2	Nut, Water Distributor	1

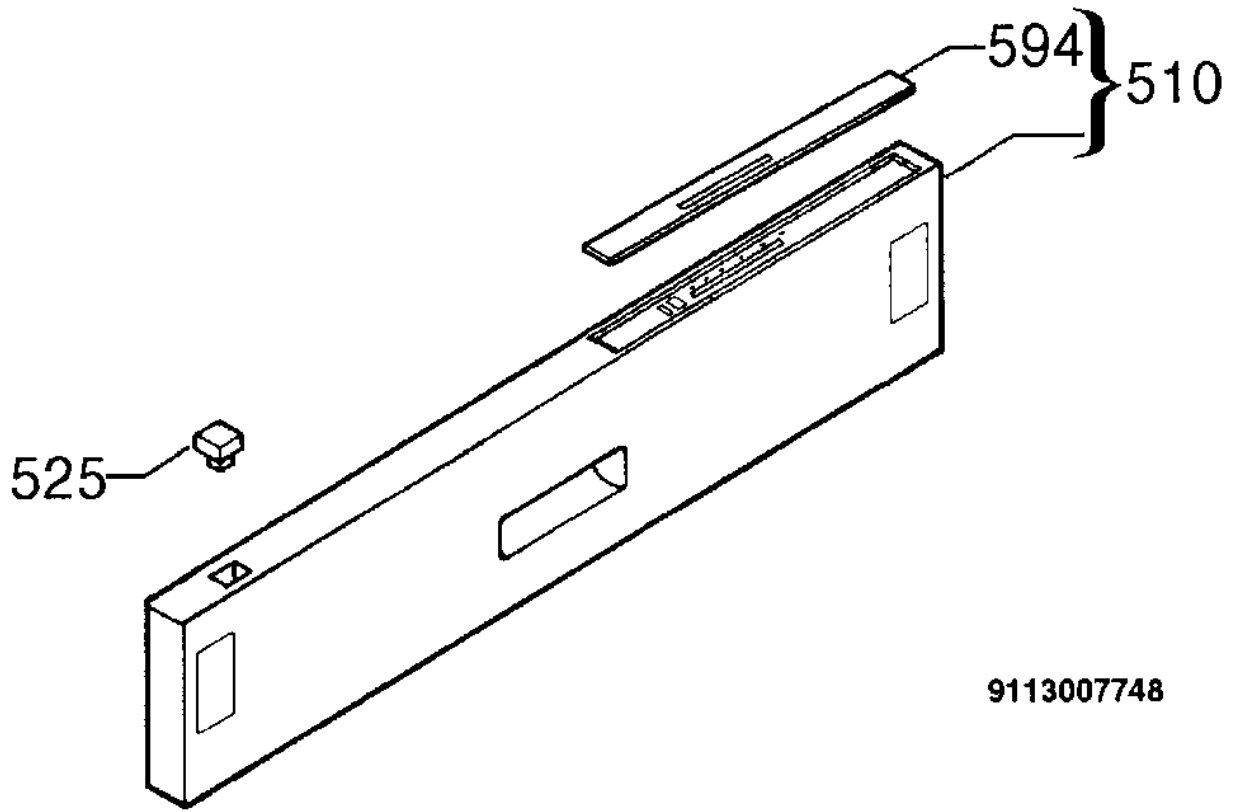


9113021581

ITEM	PART NUMBER	DESCRIPTION Ex. 5573	QTY
5	1528765-01/7	Regeneration Electric Valve, Water Softener, BITRON	1
5	1528875-01/4	Regeneration Electric Valve, Decalcifier, T&P	1
48	1528882-01/0	Salt Sensor, Decalcifier, T&P	1
48	1528766-00/7	Salt Sensor, Decalcifier, BITRON	1
117	50286081-00/0	Decalcifier	1
130	1521128-10/6	Gasket, Decalcifier	1
130A	1526505-00/1	Grommet, Decalcifier	4
521	1526411-00/2	Stopples, Decalcifier	1
527	1526449-10/1	Ring Nut, Decalcifier, Dark Grey	1
589	1520328-40/0	Funnel, Grey	1

MODEL: ESL6163

EX. VIEW DRAWING 5569
CONTROL PANEL ASSEMBLY

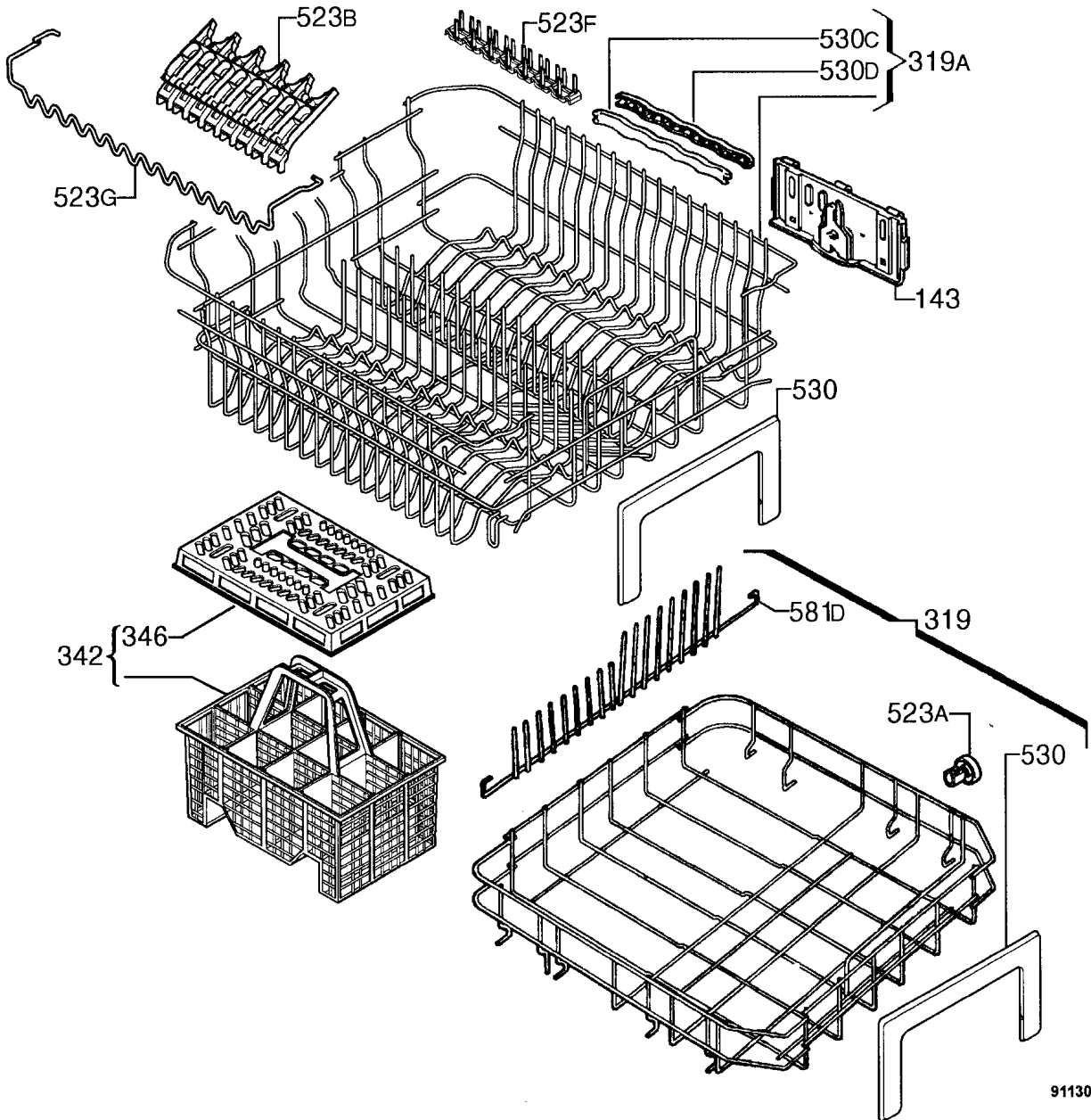


9113007748

ITEM	PART NUMBER	DESCRIPTION Ex. 5569	QTY
510	1528481-91/2	Control Panel, Silk Screened, Complete	1
525	1521064-40/0	Push Button, Black	1
594	1529008-01/1	Indicating Glass, Control Panel, Silk Screened	1

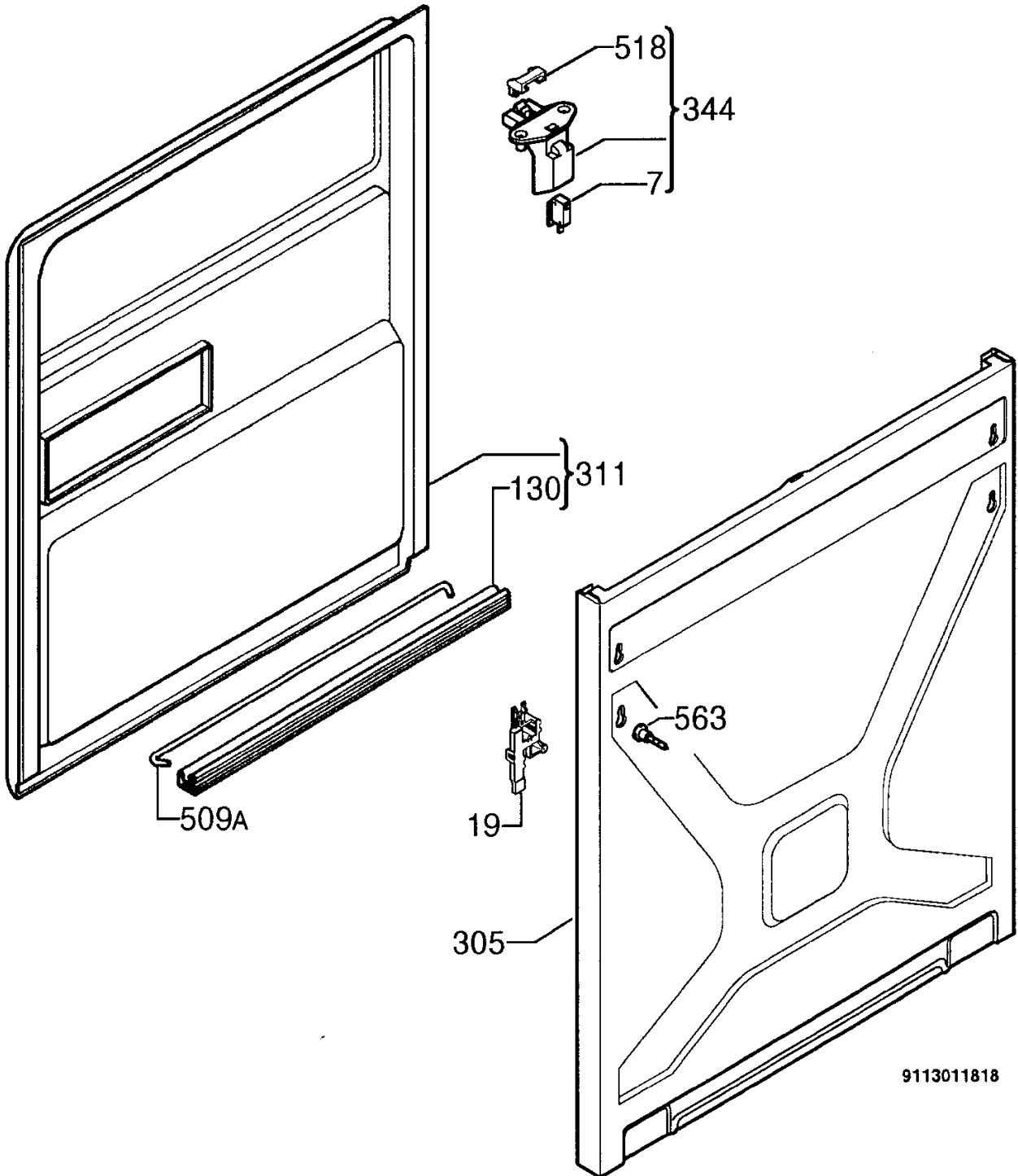
MODEL: ESL6163

EX. VIEW DRAWING 5568
BASKET ASSEMBLY



9113020575

ITEM	PART NUMBER	DESCRIPTION Ex. 5568	QTY
143	50283687-00/7	Adjustment Kit, Right-Left, Dark Grey, BIG/60	2
319	1529703-31/4	Dishwasher Basket, Bottom, Grey, DIVA-60	1
319A	1529609-30/5	Dishwasher Basket, Upper, Grey	1
342	1118228-00/4	Cutlery Basket, Grey, Complete	1
346	1118227-00/6	Grating, Cutlery Basket, Grey	1
523A	50286965-00/4	Wheel Kit,8 Pcs, Dark Grey, DIVA45/60	8
523B	1527713-12/5	Support, Cup, Grey	4
523F	1528354-10/1	Support, Measure Cup, Silver	1
523G	1528166-00/0	Support, Measure Cup, Grey	1
530	1170082-01/8	Handle, Dishwasher Basket, Silver	2
530C	1523108-40/3	Handle, Inner, Silver	2
530D	1523107-40/5	Handle, Outer, Silver	2
581D	1527092-01/7	Partition, Back, Grey	2
581D	1527092-21/5	Partition, Back, Grey	2



9113011818

ITEM	PART NUMBER	DESCRIPTION Ex. 5577	QTY
7	50253835-00/8	Micro Switch, Door	1
19	1111414-13/0	Door Indicator Lamp, Light, Bottom	1
130	1527401-00/2	Door Gasket, Bottom, Black, L=550	1
305	1526822-01/8	Door, White, Integrated, LS60-BIG-588x570	1
311	50281813-00/1	Inner Door, Complete, DIVA BIG/60	1
344	1526377-03/9	Latch, Bridging Plug, Complete	1
509A	1520419-14/2	Tie, Hinge	1
518	1526414-02/2	Bridging Plug	1
563	50253377-00/1	Kit, Peg, Door Panel, 2 Pz.	2

Programme Table

Type	Prewash			Wash				1st cold rinse			2nd cold rinse			Additional rinse			Warm rinse	DRY	Cycle time (minutes)
	Heating (Temperature °C)	Washing time after heating (min.)	Wash type	1st Heating (Temperature °C)	Washing time after heating (min.)	2nd Heating (Temperature °C)	Washing time after heating (min.)	Wash type	Washing time (minutes)	Washing time (minutes)	Wash type	Washing time (minutes)	Washing time (minutes)	Wash type	Heating (Temperature °C)	Washing time after heating (min.)			
IC Intensive (care)	55°C	10'	ctrl	55°C	5'	68°C	14'	ctrl	3' (<65°C)	3'	3'	3'	ctrl	5'	PW1	69°C	27'	ctrl	127'
E1 Energy label Axx	---	10'	PW1	15.5' <62°C	42'	---	---	PW1	5' (<60°C)	---	---	---	PW1	4'	PW1	16' <68°C	2'	PW1	162'
Auto 2 Auto 50-65°C	---	8'	ctrl	50°C	4'	68°C	8'	ctrl	---	---	---	---	PW1	5'	PW1	69°C	1'	PW1	92-115'
Q4 Rinse & Hold	---	8'	PW1	---	---	---	---	---	---	---	---	---	---	---	---	---	---	---	12'
Q5 Quick 30 min.	---	---	---	14.5' <65°C	---	---	---	ctrl	---	---	---	---	---	5'	PW1	9' <68°C	---	ctrl	31'

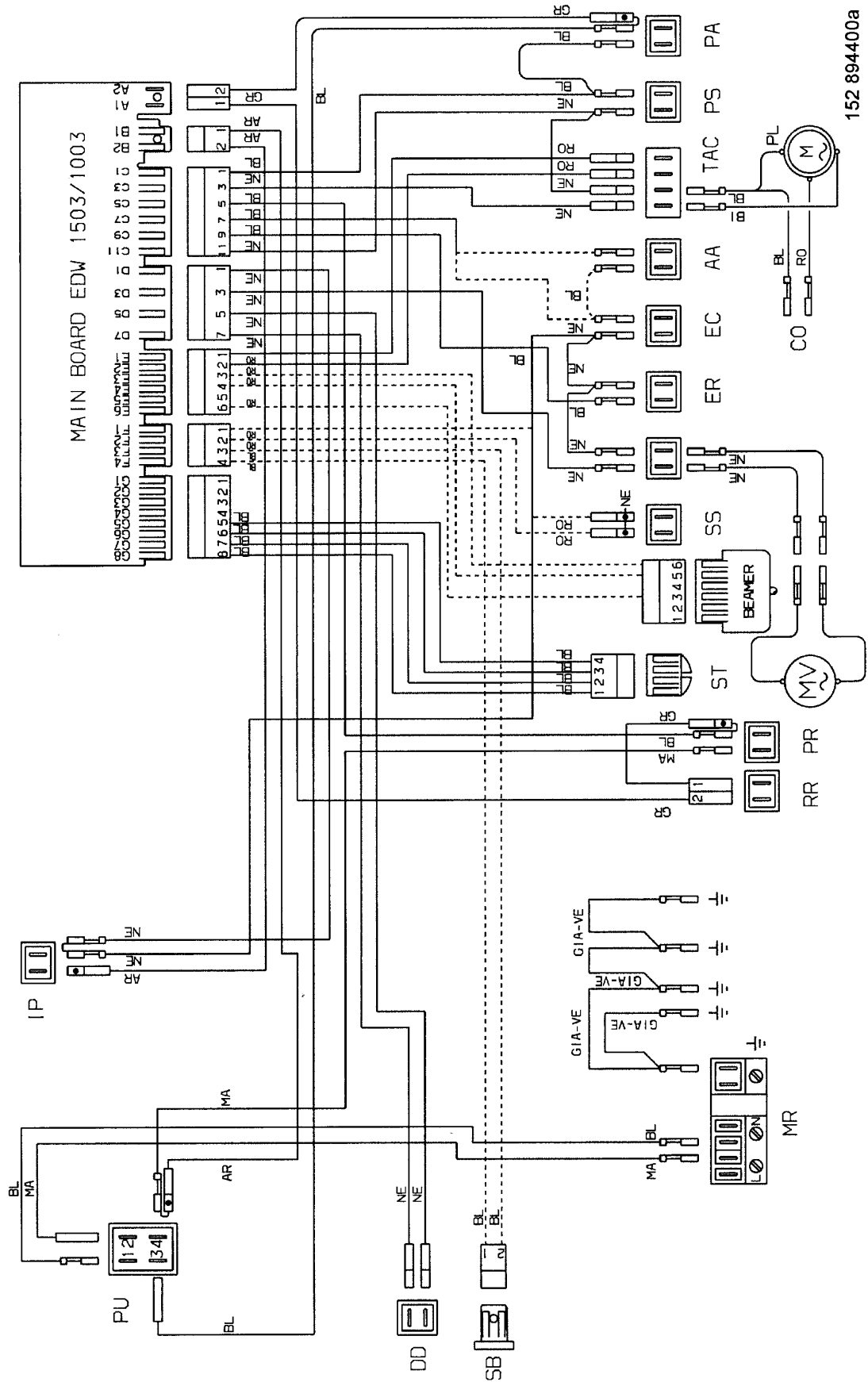
Note: The total duration of the programmes is approximate and does not include the additional rinse, which is optional. The regeneration times in the different phases are not reported, as they are "Una Tantum" and can be performed in any cycle.

ctrl ⇔ Wash at constant speed of 2800 rpm. PW ⇔ Pulse washing 1600 > 2800 rpm.

152 902200/EN
152 902211/EN

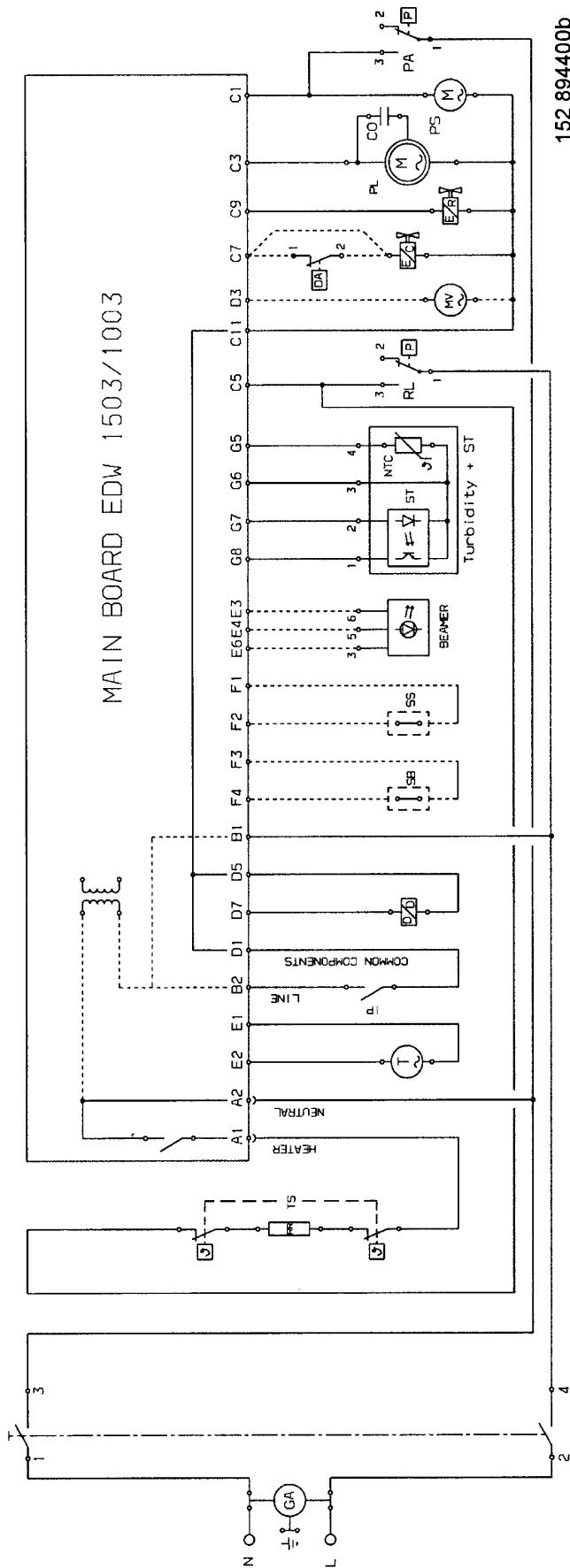
IMPORTANT SAFETY NOTICE

This diagram has been prepared for use by electrically qualified service technicians. The manufacturer cannot be held responsible for the interpretation of its service publications nor for any injury or damage that may occur in connection with their use.



IMPORTANT SAFETY NOTICE

This diagram has been prepared for use by electrically qualified service technicians. The manufacturer cannot be held responsible for the interpretation of its service publications nor for any injury or damage that may occur in connection with their use.



152 894400b

IMPORTANT SAFETY NOTICE

This diagram has been prepared for use by electrically qualified service technicians. The manufacturer cannot be held responsible for the interpretation of its service publications nor for any injury or damage that may occur in connection with their use.