



# Electrolux

**ELECTROLUX HOME PRODUCTS PTY LTD**

ABN 51 004 762 341

Technical Publication N° DW402

Issue: 1

Date: 04/14

## ***ELECTROLUX ELECTRONIC DISHWASHER***

**TO BE USED IN CONJUNCTION WITH  
CIRCUIT and WIRING DIAGRAM PUBLICATION - DW300.**

**MODEL:**

**ESF6800ROX  
PNC 911418021 02**

<b>VARIANT CHANGE SUMMARY</b>	
-------------------------------	--

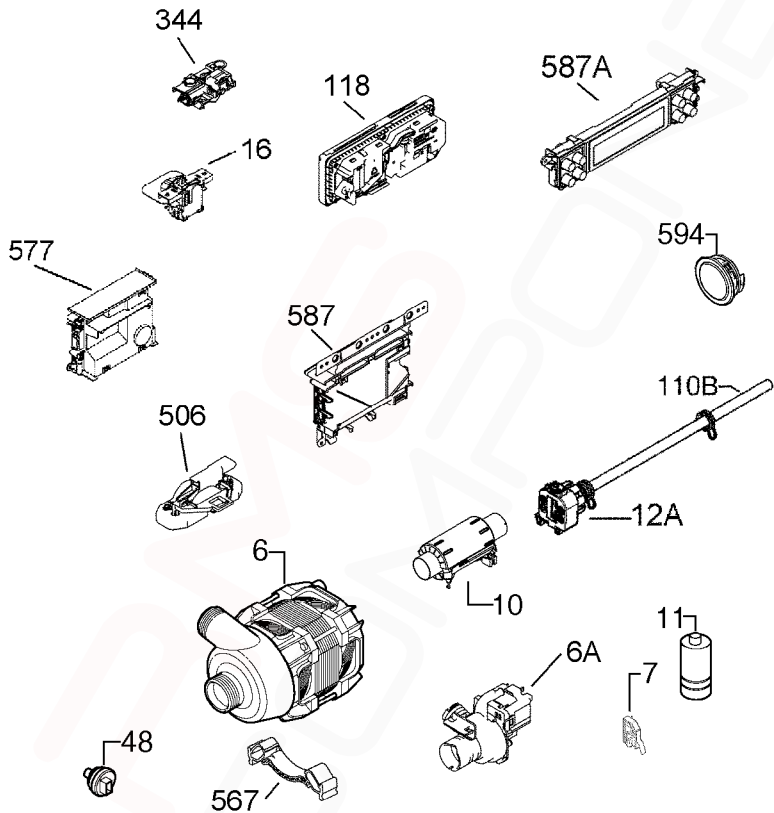
<b>02</b>	Float Switch Assembly, PCB, Seal Channel Drainage & Manifold Inner
-----------	--

<b>SAFR</b>	
-------------	--

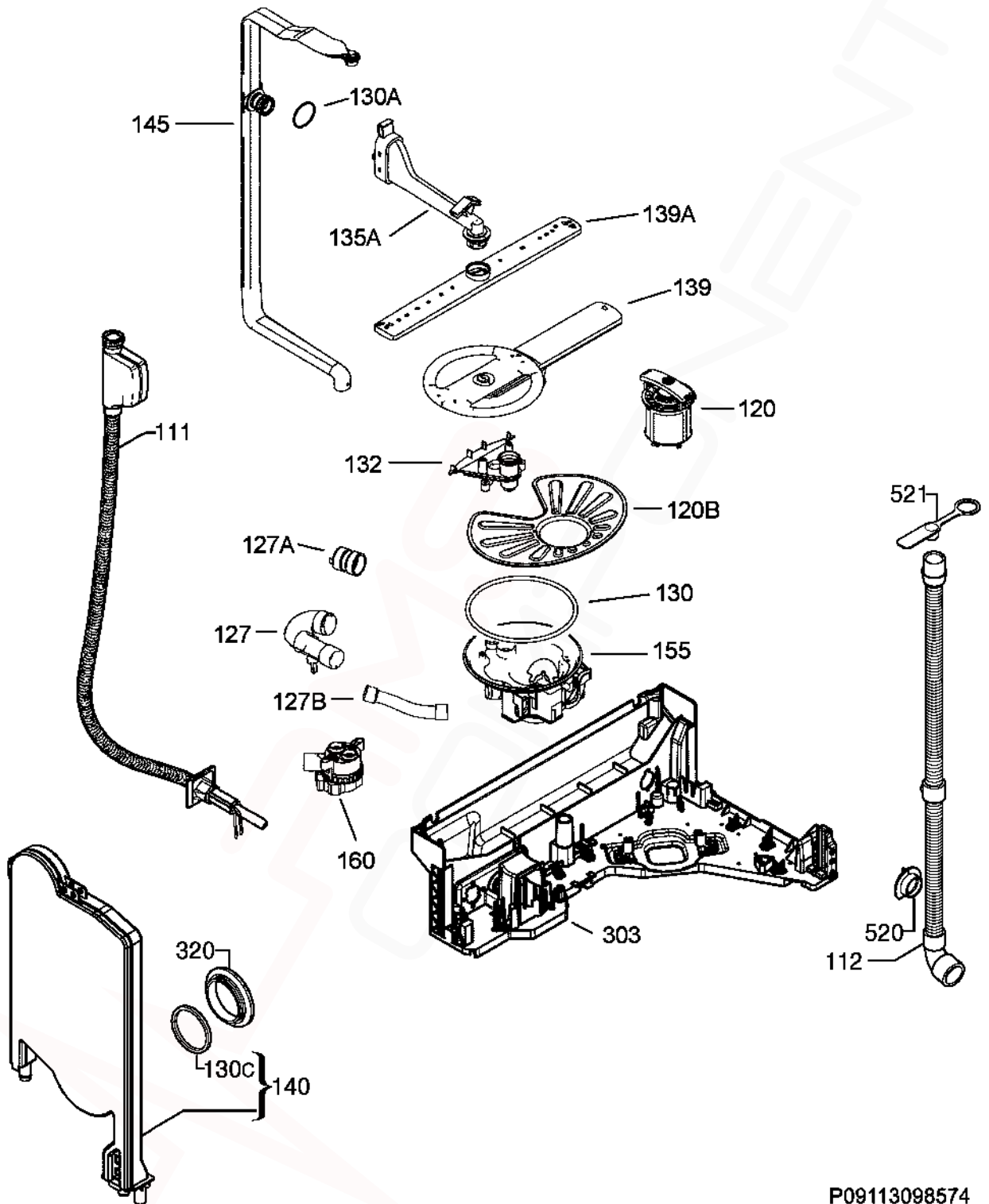
ESF6800ROX/911418021 02	Mar 2014
-------------------------	----------



ITEM	PART N°	DESCRIPTION Ex. P09113181684	QTY
110B	1172814202	Hose Drying x 795mm Long	1
130	1171580002	Gasket Door x 1800mm Long	1
135	1171458233	Vent Drying Activator	1
139E	8072403010	Nut Fastening Top Spray Arm	1
300A	1119183000	Cover Top Spray Rose	1
301	1171563024	Tray Bottom Spillage	1
301A	4055138376	Kit Overflow Hose	1
308	4055179909	Kit Hinge Left - Right	1
322	1171564733	Crossbar Front Upper	1
322A	1172379115	Crossbar Back Upper	1
322B	1171561051	Brace Front Upper	1
326	1171560616	Panel Side Left Inox	1
326A	1171560715	Panel Side Right Inox	1
330	1521870012	Foot Adjustable x 56 Long	2
330A	1527992026	Foot Adjustable Front x 61 Long	2
344	1522344-05/8	Latch Door Lock	1
521D	1526576101	Cover Latch Hole	1
523	4055260790	Kit Support Roller Dark Grey (4 Pkt)	1
523B	1521220-10/1	Bracket Base Roller	4
523D	1172460162	Foot Support Front Left	1
523D	1172460048	Foot Support Front Right	1
541	N.P.A.	Clamp Hose	-
541A	N.P.A.	Clamp Hose Double	-
552	1171989005	Rail Basket Upper	2
567	1523236-03/0	Nut Speed Clip	1
580	1171654120	Panel Front Lower	1
597	1520479401	Stop Basket Front Dark Grey	2
597A	8996461234-05/7	Stop Basket Rear Dark Grey	2
N.I.	1174277002	Grommet Side Mounting	2
N.I.	1173722008	Sponge Water Tank	1
N.I.	1171097-00/7	Cap Protection Stud	2



ITEM	PART N°	DESCRIPTION	Ex View P09113170154	QTY
6	1113170003	Pump Circulation Synchronous BLDC Motor		1
6A	140000443022	Pump Drain 50Hz		1
7	1113183022	Switch Micro Lamp		1
10	0122400012	Element Inline 230V/2000W Ø32mm		1
11	1113155202	Capacitor 0.47µf Interference		1
12A	1174745107	Switch Pressure Analogic Complete		1
16	1113337024	Switch Main Auto Off		1
48	1113348005	Sensor Turbidity Optical		1
110B	1526815707	Hose Switch Pressure Ø10x260mm		1
118	140000775019	Detergent Dispenser		1
344	1113150401	Lock Door		1
506	140000565048	Switch & Float Assembly		1
567	1171934019	Support Bracket Motor Rubber		1
577	1113158073	Board Motor Electronic EDW3000 BLDC		1
587	973911418021029	Board Configured Electronic EDW1xxx		1
587A	1380045102	Board User Interface EDW4010		1
594	8074530026	Light Internal Diode Led		1
N.I.	1173611243	Harness Complete		1
N.I.	1173704006	Mount Pump Drain		1
N.I.	1114023029	Harness Motor Module		1
N.I.	1114038019	Wiring Harness Main User Interface		1
N.I.	1170862-31/0	Cord Power AUS/NZ 10A		1
N.I.	1170897308	Cover Terminal		1
N.I.	1173704006	Mount Pump Drain		1
N.I.	1171864042	Protection Wiring Harness		1





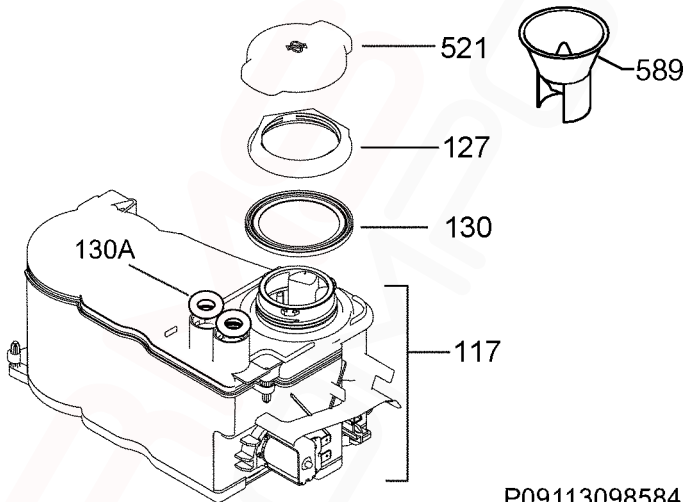
ITEM	PART N°	Description	Ex View P09113098574	QTY
111	1171990805	Hose Inlet Aqua-Control x 1.8M Long		1
112	1173680305	Hose Drain x 2.23M Long		1
120	1119161105	Drain Filter Assembly		1
120B	1119209011	Filter Flat		1
127	1119164018	Hose Sump Heater		1
127A	1119165007	Hose Heater Circulation Pump		1
127B	8079302017	Hose Water Softener Sump		1
130	1119186003	O-Ring Sump		1
130A	1380235018	Seal Channel Drainage		1
130C	N.P.A.	Round Seal Container Cup		-
132	1119158119	Support Spray Arm Lower		1
135A	140000409015	Channel Drainage Grey Complete		1
139	1119208211	Spray Arm Lower Grey x 322.6mm Long		1
139A	1119159315	Spray Arm Upper Grey x 450mm Long		1
140	1170481723	Container Cup Small		1
145	1119447157	Manifold Inner Grey x 691.9mm long		1
155	1119151296	Sump Water Assembly		1
160	1113161010	Regulator Flow Control		1
303	1171581026	Baseplate Basement		1
320	1526272-10/7	Vent Vapour Outlet Dark Grey		1
520	N.P.A.	Flange Discharge Pipe		-
521	N.P.A.	Stopper Drainage Hose		-
N.I.	1529175109	Clamp Fixing Sensor		1
N.I.	1400000592015	Sealing Pressure Switch		1

If a Customer needs to extend their Drain Hose, order the following components:  
**0571400142 Hose Drain (2M length), 0182200002 Ferrule Hose Joiner (19mm)**  
and 2 x **W011 Clamp**.

For extensions less than 2 metres, use **ES5323K Kit Hose Flex Drain (1M)**

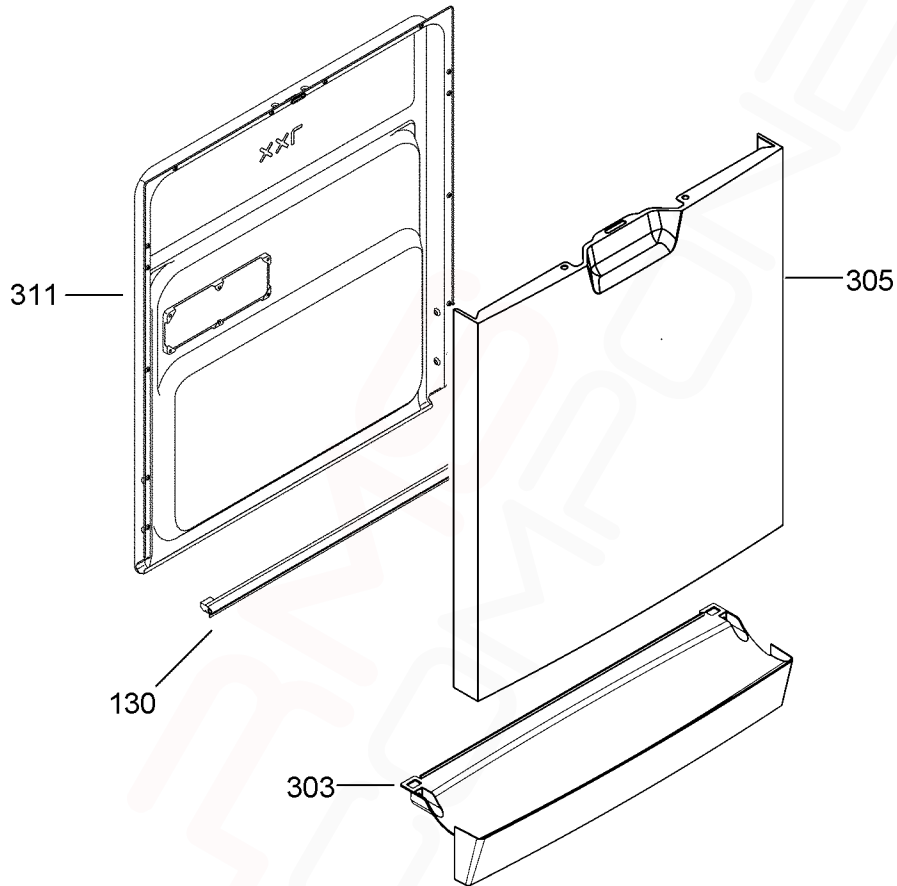
**NOTE:** Total Drain Hose length must not exceed 4 metres.



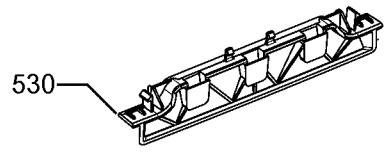
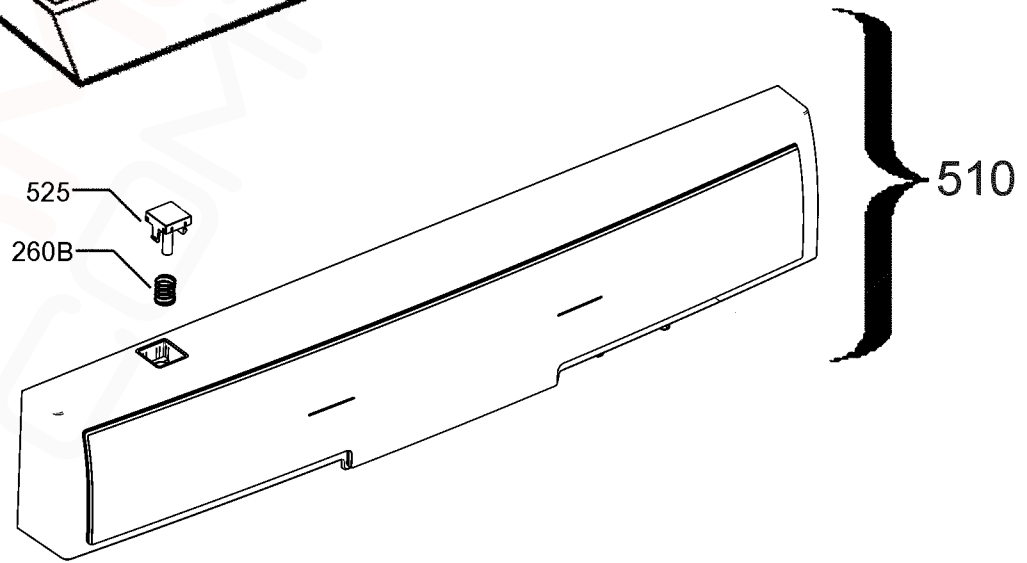
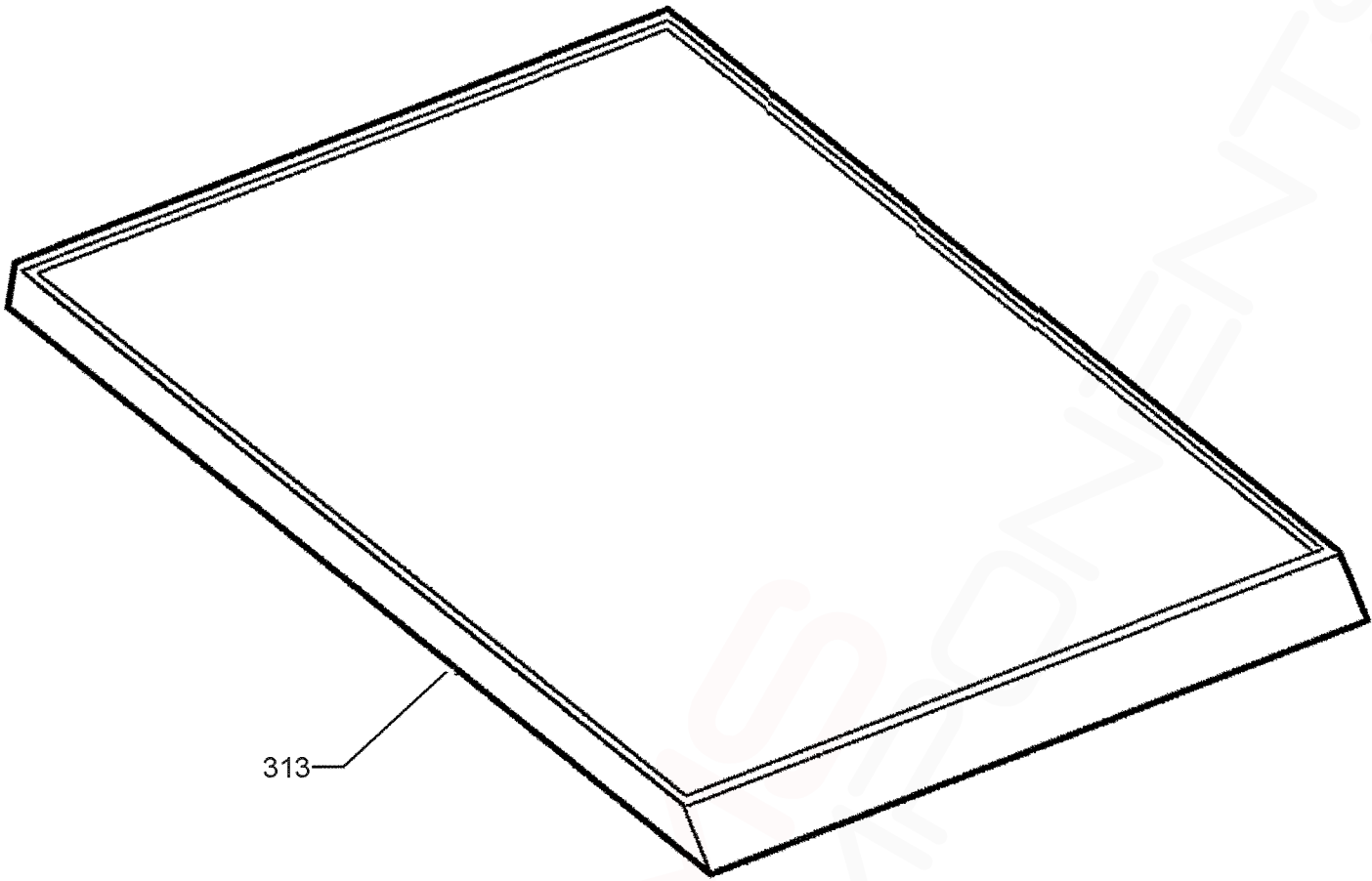


P09113098584

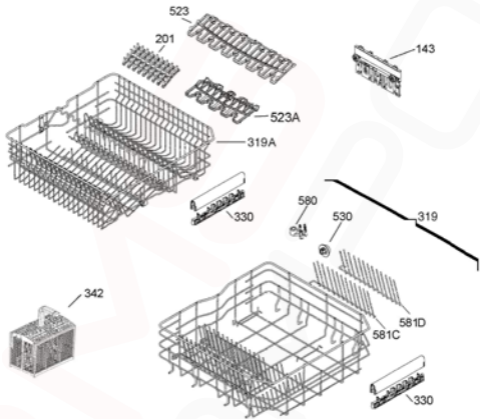
<b>ITEM</b>	<b>PART N°</b>	<b>DESCRIPTION</b>	<b>Ex. P09113098584</b>	<b>QTY</b>
117	<b>1174849008</b>	Tank Water Softener Complete		1
127	<b>1119195103</b>	Nut Water Softener		1
130	<b>1119196010</b>	Gasket Water Softener		1
130A	<b>1526505-00/1</b>	Grommet Decalcifier 13mm		2
521	<b>1119192100</b>	Cap Water Softener		1
589	<b>1172107300</b>	Funnel Filling Dishwasher Salt Transparent		1



<b>ITEM</b>	<b>PART N°</b>	<b>DESCRIPTION</b>	<b>Ex. P09113082772</b>	<b>QTY</b>
130	<b>1173419001</b>	Gasket Door Lower Black x 546mm Long		1
303	<b>1173371228</b>	Plinth Silver		1
305	<b>1173369214</b>	Door Outer St/St Inox		1
311	<b>4055075539</b>	Inner Door Complete		1
N.I.	<b>1173234004</b>	Rivet Plastic Door Ø12mm x 19mm Long		2



<b>ITEM</b>	<b>PART N°</b>	<b>Description</b>	<b>Ex. P09113170511</b>	<b>QTY</b>
260B	<b>1173192004</b>	Spring On/Off Button		1
313	<b>1173175108</b>	Work Top Grey 597x595mm		1
510	<b>140001940026</b>	Control Panel Inox ESF6800ROX		1
525	<b>1174181204</b>	Button Push ON/OFF		1
530	<b>1174184109</b>	Handle Control Panel Grey		1





<b>ITEM</b>	<b>PARTN°</b>	<b>DESCRIPTION</b>	<b>Ex View P09113029907</b>	<b>QTY</b>
143	<b>1173884428</b>	Adjustment D/Wash Basket RH		1
	<b>1173884527</b>	Adjustment D/Wash Basket LH		1
201	<b>1119349312</b>	Support Spikes Rubber		2
319	<b>1171745027</b>	Basket D/W Lower Silver		1
319A	<b>1119234712</b>	Basket D/W Upper		1
330	<b>1380176014</b>	Handle Dish Basket Rear Grey		1
	<b>1380192011</b>	Handle Dish Basket Front Lt Gr		1
342	<b>1119330213</b>	Basket Cutlery Grey Assy		1
523	<b>1172468215</b>	Support Cup Grey Long		1
523A	<b>1172467217</b>	Support Cup Grey Short		2
530	<b>4055072138</b>	Roller Kit Lower Bskt Pkt 8		1
580	<b>1171867102</b>	Clamp Fixing Partition		2
581C	<b>1172588004</b>	Rack Fold Down LH x 333mm		1
581D	<b>1172588103</b>	Rack Fold Down RH x 333mm		1



ITEM	PART N°	DESCRIPTION	Ex.
1	ACC017	Scalex Plus Descaler Sachet 75gm	
2	ACC100	Detergent Dishwasher 1kg	
3	ACC102	Rinse Aid Additive 500mls	
4	ACC103	Descaler Powder 350g <b>(Dangerous Goods rules apply, min order Qty of 12)</b>	
N.I.	ACC002	Dishwasher Salt 1kg Pack	