



ELECTROLUX HOME PRODUCTS PTY LTD
ABN 51 004 762 341

Technical Publication N° DW297

Issue: 1
Date: 07/11

***ELECTROLUX
ELECTRONIC DISHWASHER***

**TO BE USED IN CONJUNCTION WITH
CIRCUIT and WIRING DIAGRAM PUBLICATION - DW300.**

MODEL:

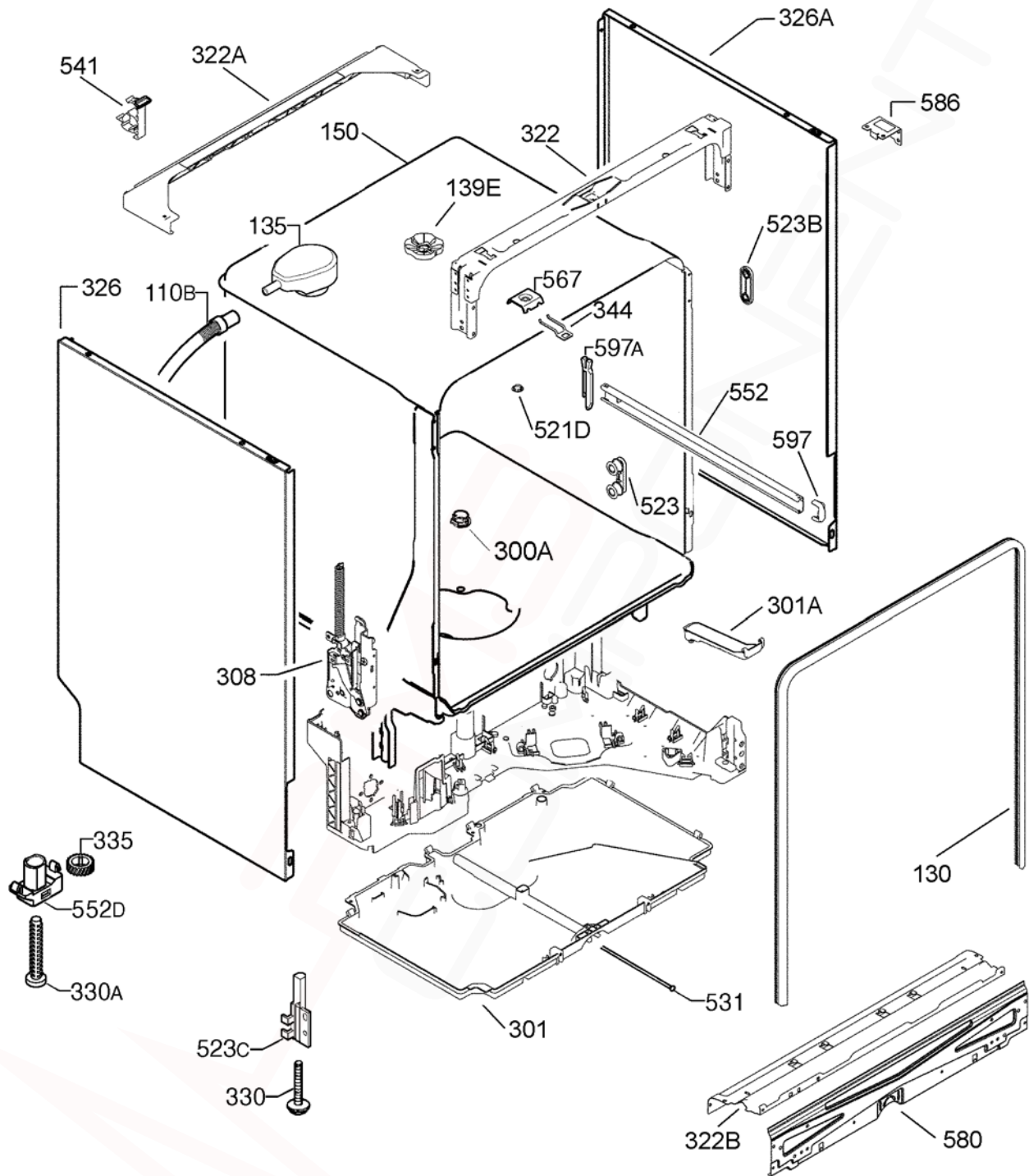
**ESF66814XR
PNC 911444035 00**

VARIANT CHANGE SUMMARY	
-------------------------------	--

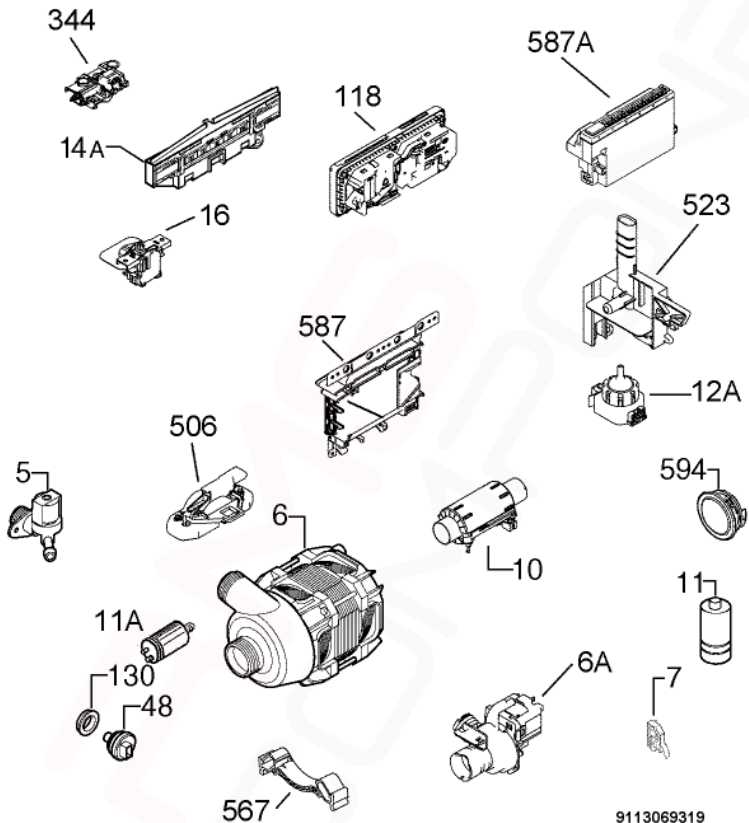
00	INTRODUCTION
-----------	--------------

First Built Dates:	
---------------------------	--

ESF66814XR / 911444035 00	07/2011
---------------------------	---------

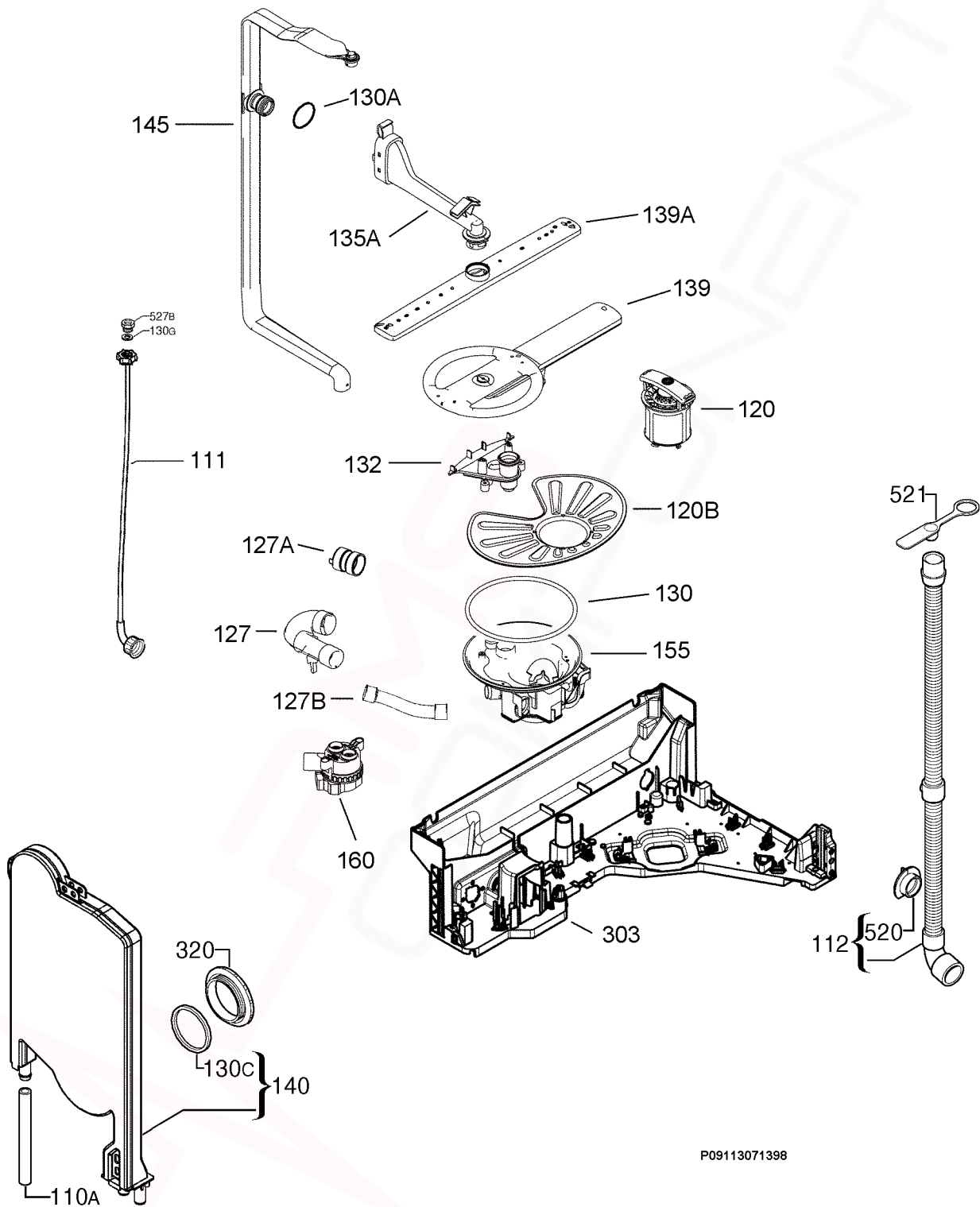


ITEM	PART N°	DESCRIPTION	Ex. P09113081621	QTY
110B	1172814202	Drying Pipe Grey x 795mm Long		1
130	1171580002	Sealing Door x 1800mm Long		1
135	1171458217	Drying Activator		1
139E	1119307013	Spray Arm Top Nut		1
150	N.P.A.	Tub Diva2		-
300A	1119183000	Cover Bottom Sprayer DIVA2		1
301	1171563024	Bottom Tray		1
301A	4055069878	Kit Overflow Hose		1
308	4055111779	Kit Hinge Left-Right		1
322	1171564717	Crossbar Front Upper		1
322A	1172379040	Crossbar Back Upper		1
322B	1171561044	Cross Piece Front Bottom		1
326	1171650409	Side Panel Left Zinc-Plated DIVA2		1
326A	1171650508	Side Panel Right Zinc-Plated DIVA2		2
330	1526617-02/0	Adjustable Foot Front		2
330A	1173632009	Adjustable Foot Central		1
335	1527142-00/2	Cog Wheel		1
344	1173444009	Latch Door Lock		1
521D	1526576101	Hole Cover Latch		4
523	50299970009	Wheel Support Kit Dark Grey (4 Pieces)		1
523B	1521220-10/1	Stiffening Holder Roller		1
523C	1526315047	Foot Support Front Left		1
523C	1526315-13/8	Foot Support Front Right		2
531	1171738006	Adjusting Screw Foot Central DIVA2		1
541	N.P.A.	Hose Clamp		-
552	1171989005	Basket Rail		2
552D	1173633007	Guidance Rail Foot Central		1
567	1523236-03/0	Plaque (Speed Clip)		1
580	1171654104	Closure Front Bottom		1
586	1172870014	Fixing Bracket Top		2
597	1520479-30/2	Basket Stop Front Dark Grey		2
597A	8996461234-05/7	Stopper Back Dark Grey		2
N.I.	1173722008	Sponge Water Tank		1
N.I.	ES6060	Foil Aluminium Adhesive		1



9113069319

ITEM	PART N°	DESCRIPTION	Ex. 9113069319	QTY
5	1170958118	Fill Valve		1
6	1113171043	Washing Pump Tachometer Asynchronous		1
6A	1113172306	Drain Pump		1
7	1113183022	Microswitch Lamp Diva2		1
10	50297618-00/6	Heating Element 230V/2000W Ø32mm		1
11	1113155038	Interference Capacitor		1
11A	1115927012	Capacitor Motor 3 µf		1
12A	1325162046	Analogic Pressure Switch ELBI		1
14A	1113146003	LED PCB		1
16	1113337024	Main Switch Auto Off		1
48	1113160004	Temperature Sensor Turbidity Sensor		1
118	1113338311	Dispenser Detergent		1
130	0208400152	Sealing Sleeve Temperature Sensor		1
344	1113150401	Door Lock Assembly		1
506	1113174039	Float Switch Assembly		1
523	1119495008	Pressure Sensor Support		1
567	1173024009	Motor Support Rubber		1
587	973911444035001	Configured Electronic EDW1xxx		1
587A	1113363012	User Interface Board EDW1503-- DIVA2		1
594	4055020-18/6	Collar Lens Complete		1
N.I.	1114035106	Protection Detergent Dispenser Eltek		1
N.I.	1114038019	Harn Main Elect Board Door Ind Lamp x 320mm Long		1
N.I.	1114038019	Wire Harn Main Elect Board User Int Board		1
N.I.	1114040122	Harness Complete DIVA2		-
N.I.	1170862-31/0	Power Cable AUS/NZ		1
N.I.	1170897308	Terminal Cover		1

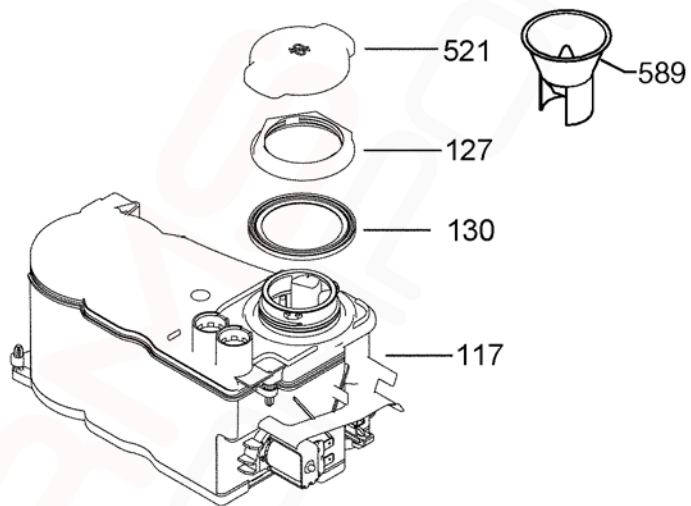


ITEM	PART N°	DESCRIPTION	Ex. 9113071398	QTY
110A	1172306217	Tube Container Cup x 260mm Long		1
111	1528190000	Inlet Hose x 1500mm Long		1
112	1173680305	Discharge Hose Install Black x 2230mm Long		1
120	1119161105	Drain Filter Assembly		1
120B	1119209011	Filter Flat		1
127	1119164018	Hose Sump Heater		1
127A	1119165007	Hose Heater Circulation Pump		1
127B	1119155040	Hose Water Softener Sump		1
130	1119186003	O-Ring Sump		1
130A	1523119-01/2	Seal Channel Drainage		1
130C	N.P.A.	Round Seal Container Cup		-
132	1119158101	Lower Spray Arm Support		1
135A	1119340113	Channel Drainage Grey Complete DIVA2		1
139	1119208120	Spray Arm Assembly Grey DIVA2		1
139A	1119159315	Upper Spray Arm Grey		1
140	1170481533	Container Cup Small Electronic		1
145	1119447108	Manifold Outer		1
155	1119151221	Water Sump Assembly		1
160	1113161010	Flow Control Regulator		1
303	1171581026	Basement		1
320	1526272-10/7	Grill Vapour Outlet Dark Grey		1
520	N.P.A.	Flange Discharge Pipe		-
521	N.P.A.	Stopper Drainage Hose		-
N.I.	1529175109	Fixing Clamp Sensor 35.6		1
N.I.	4055034963	Service Kit Electric Cable Sensor		1

NOTE: Total Drain Hose length must not exceed 4 metres.

If a Customer needs to extend their Drain Hose, order the following components:
0571400142 Hose Drain (2M length), 0182200002 Ferrule Hose Joiner (19mm)
and 2 x 0005001019 Clamp.

For extensions less than 2 metres, use ES5323K Kit Hose Flex Drain (1M)



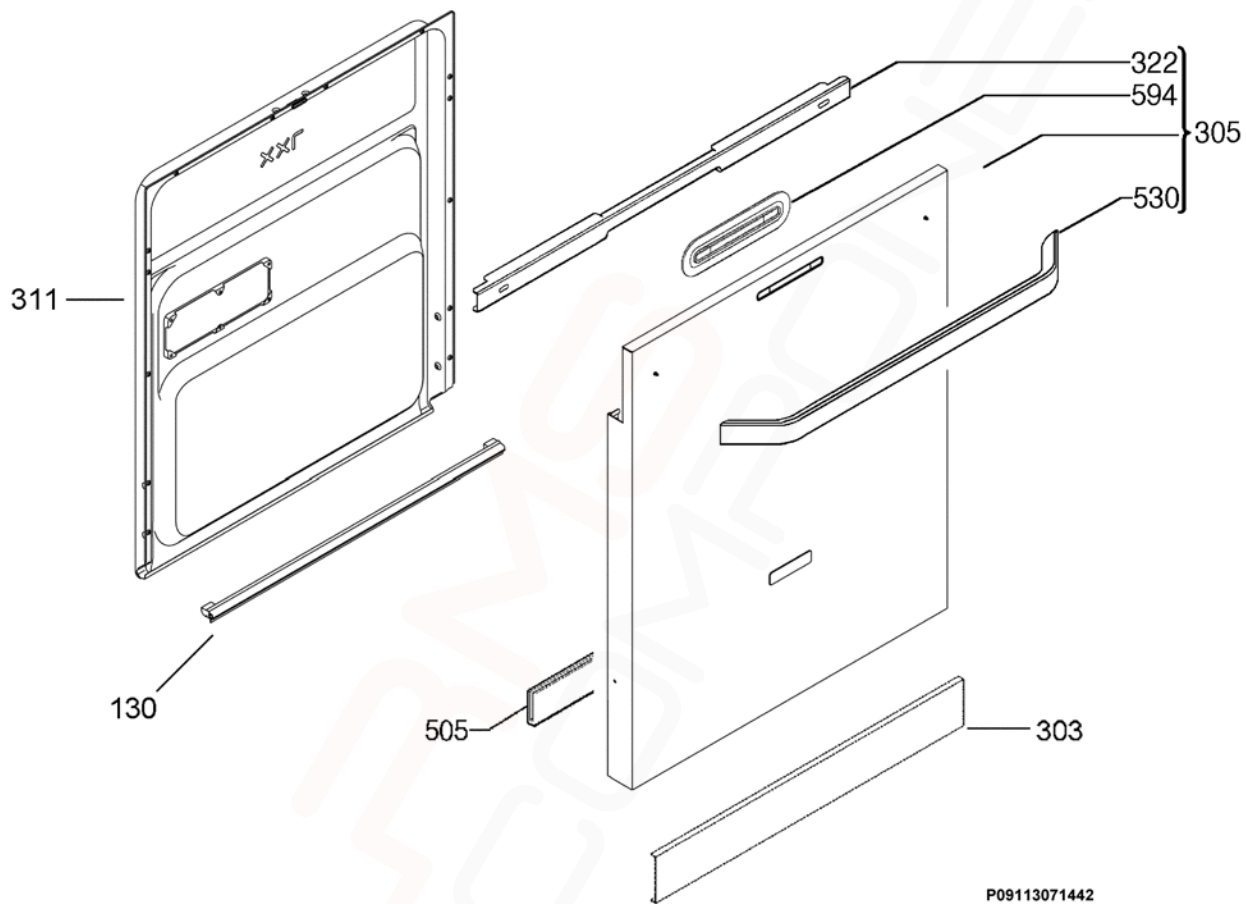
9113063167

MODEL: ESF66814XR

PNC 911444035 00

**EX. VIEW 9113063167
REGENERATION TANK
ASSEMBLY**

ITEM	PART N°	DESCRIPTION	Ex. 9113063167	QTY
117	1119191029	Water Softener Assembly		1
127	1119195103	Nut Water Softener		1
130	1119196010	Gasket Water Softener		1
521	1119192100	Cap Water Softener		1
589	1172107300	Filling Funnel Dishwasher Salt Transparent		1

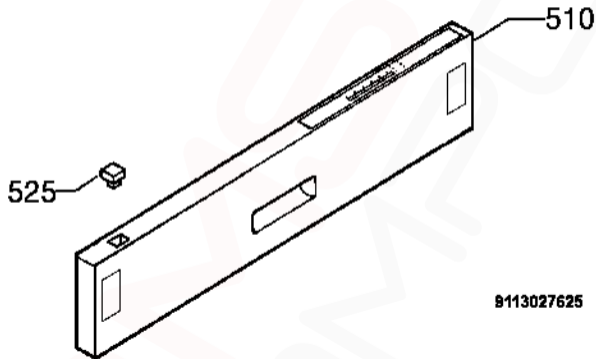


P09113071442

9113071442

MODEL: ESF66814XR**PNC 911444035 00****EX. VIEW 9113071442
DOOR COMPLETE
ASSEMBLY**

ITEM	PARTN°	DESCRIPTION	Ex. 9113071442	QTY
130	1173419001	Door Gasket Bottom Black x 546mm Long		1
303	1173238401	Plinth		1
305	1173356401	Door Complete		1
311	4055071338	Inner Door Complete DIVA2		1
322	1529313023	Crossbar Door		1
338	3871935-00/7	Adaptor Door Handle Inox		1
505	1172877100	Profile Bottom Door x 540mm Long		1
530	3874267-01/0	Door Handle High-Grade Steel		1
563	50253377-00/1	Kit Peg Door Panel (2 Pieces)		1
594	1529318014	Indicating Glass Door		1



9113027625

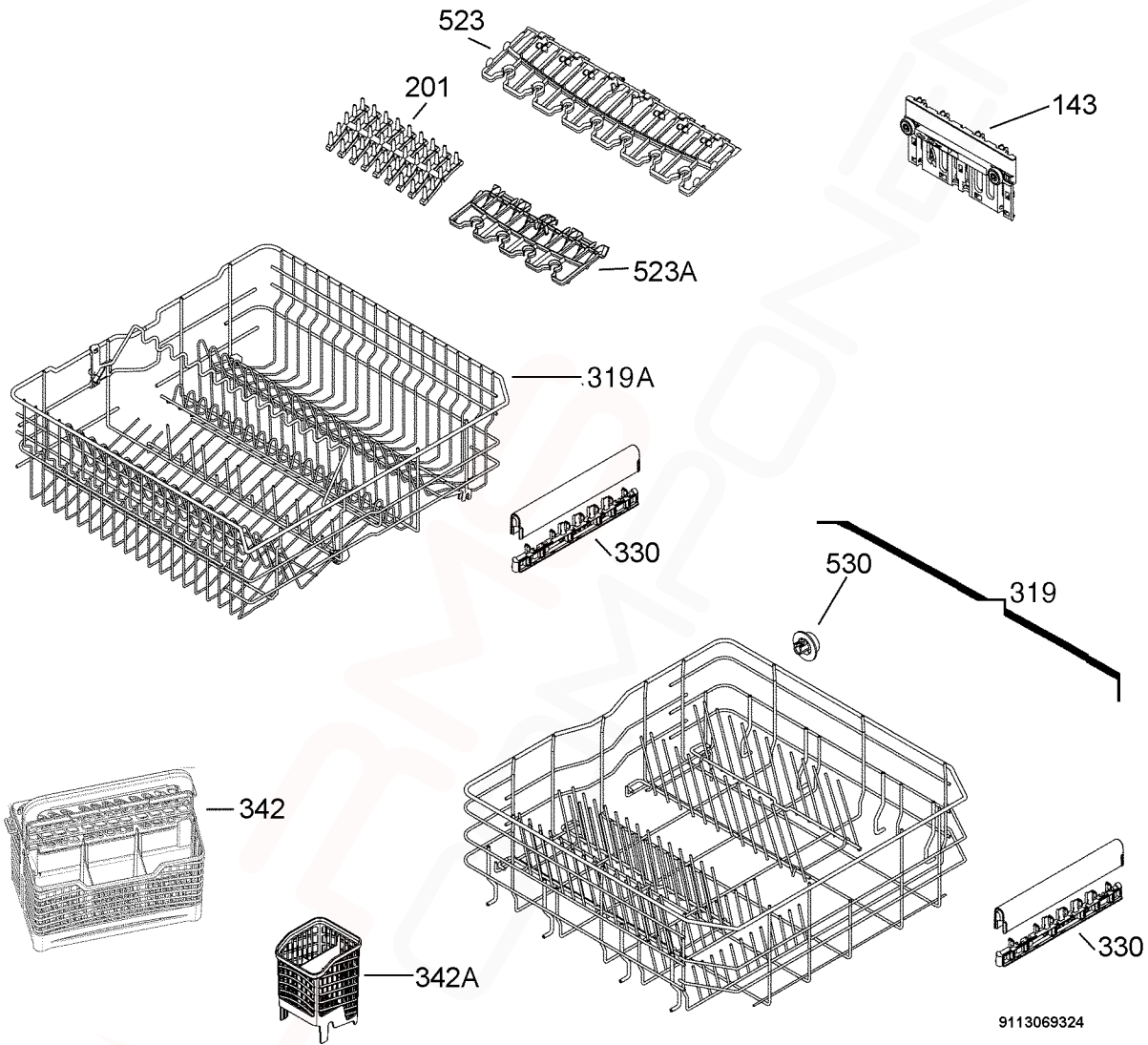
9113027625

MODEL: ESF66814XR

PNC 911444035 00

**EX. VIEW 9113027625
CONTROL PANEL
ASSEMBLY**

ITEM	PART N°	DESCRIPTION	Ex. 9113027625	QTY
510	1173364017	Control Panel Silkscreened Complete		1
525	1171114-10/9	ON/OFF Button		1



9113069324

MODEL: ESF66814XR**PNC 911444035 00****EX. VIEW 9113069324
BASKET ASSEMBLY**

ITEM	PART N°	DESCRIPTION	Ex. 9113069324	QTY
143	1172471235	Adjustment Right		1
	1172471334	Adjustment Left		1
201	1119349205	Spikes Rubber DIVA2		4
319	1171745027	Dishwasher Basket Bottom		1
319A	1119234340	Dishwasher Basket Upper		1
330	4055072120	Handle Complete DIVA2		2
342	1119343109	Cutlery Basket Grey		1
342A	1119470035	Cutlery Basket Small Grey		1
523	1172468116	Support Cup Grey Long		1
523A	1172467118	Support Cup Grey Short		1
530	4055072138	Wheel Kit (8 Pieces)		1