



**ELECTROLUX HOME PRODUCTS PTY LTD**  
ABN 51 004 762 341

Technical Publication N° DW282

Issue: 1  
Date: 11/10

**WEB SITE ADDRESS: [www.partnship.com.au](http://www.partnship.com.au)**

***ELECTROLUX***  
***FREESTANDING DISHWASHER***

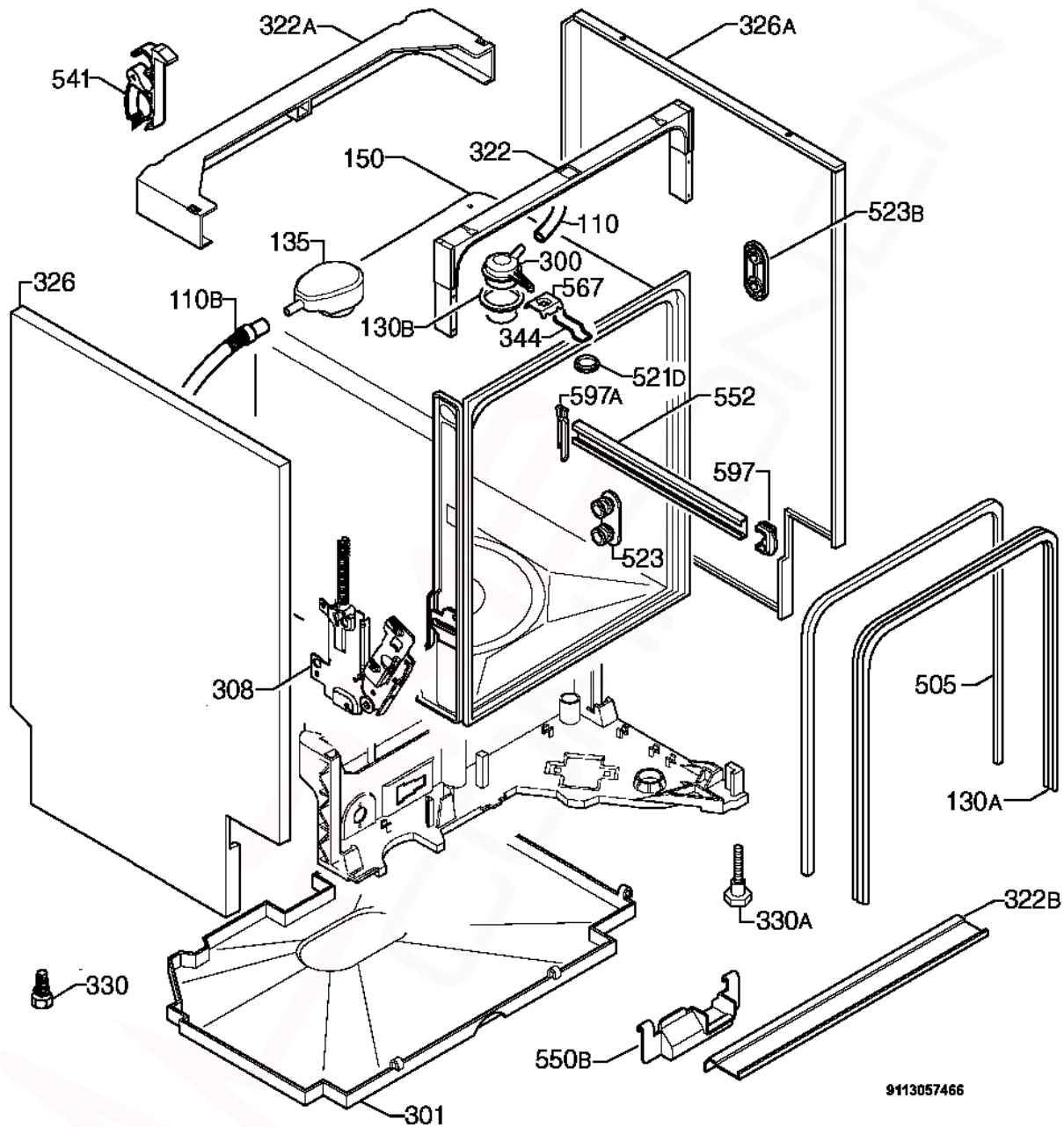
**TO BE USED IN CONJUNCTION WITH  
*CIRCUIT and WIRING DIAGRAM PUBLICATION - DW230.***

***MODEL:***

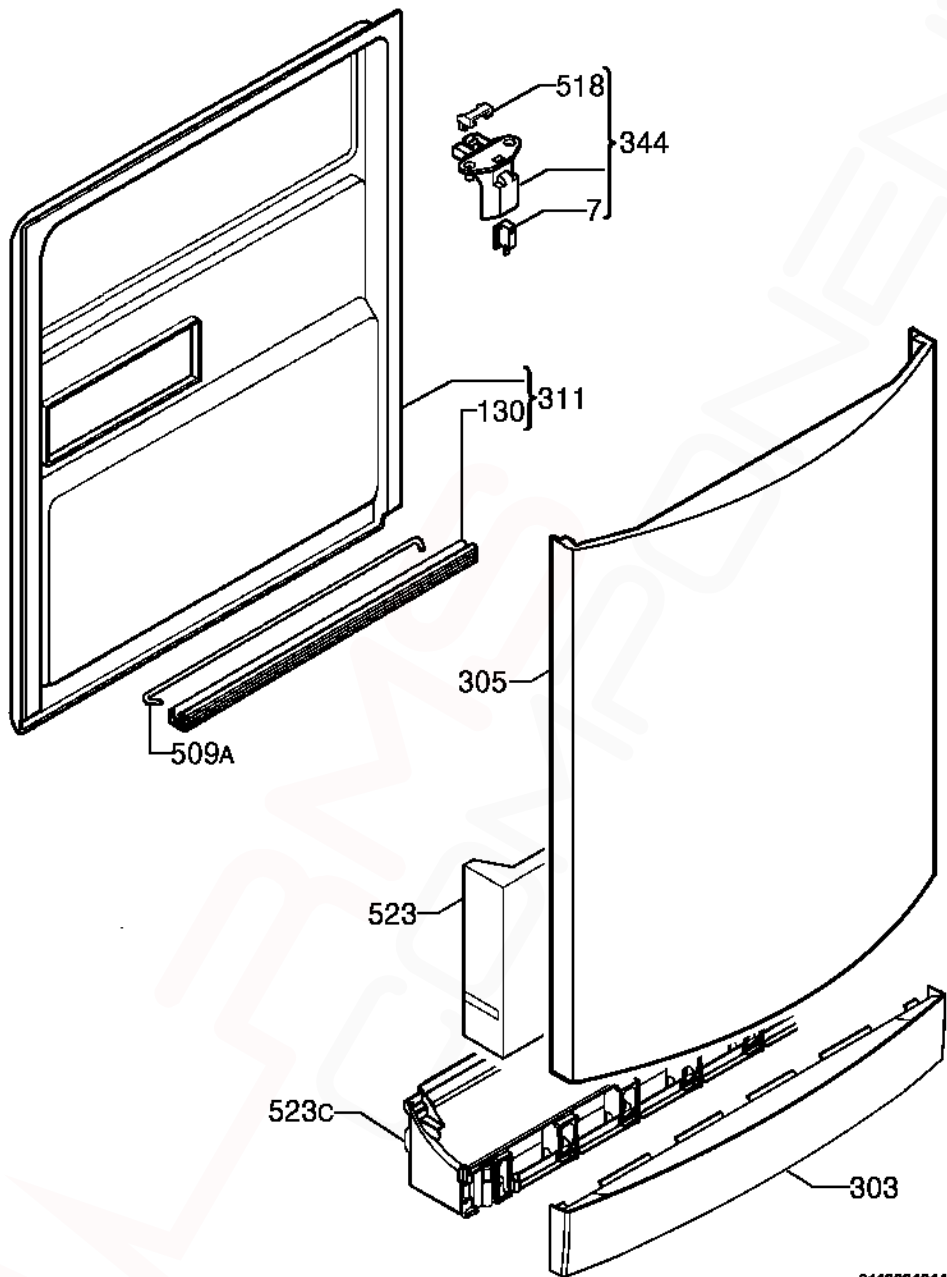
**ESF66060X**  
**PNC 911916660 02**

<b>VARIANT CHANGE SUMMARY</b>	
<b>02</b>	Air Guide Active Dry, Kit Door Hinge, Trim Tub - Black, Fixing Clip Stud, Door Inox Arched, Detergent Dispenser, P.C.B. Update, Sump Pipe Union, Basement

<b>Release Date:</b>	
<b>ESF66060X/911916660 02</b>	<b>09/09/2009</b>



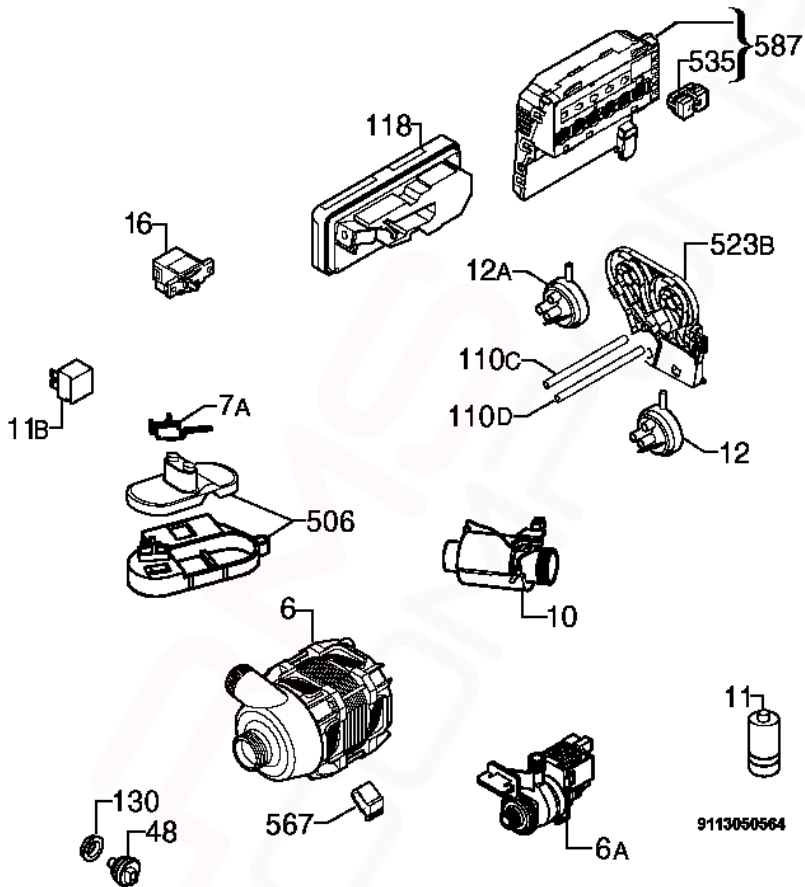
ITEM	PART N°	DESCRIPTION	Ex. 9113057466	QTY
110	1528324-11/2	Tube Sprayer Black x 1100mm Long		1
110B	1527937-01/3	Tube Drying x 680mm Long		1
130A	1171265026	Sealing Outer x 1730mm Long		1
130B	8996461225-60/0	Gasket Sprayer		1
135	1171458118	Air Guide ACTIVE DRYING		1
150	N.P.A.	Tub		-
300	1118130-00/2	Top Part Nozzle		1
301	1526298-07/8	Bottom Cabinet		1
308	4055031332	Kit Door Hinge Right-Left		1
322	1525280358	Crossbar Front Upper		1
322A	1170350-01/9	Crossbar Back Upper		1
322B	1527256-10/9	Crossbar Front Bottom		1
326	1170380214	Side Panel Left Silver		1
326A	1170380313	Side Panel Right Silver		1
330	1521870-01/2	Adjustable Foot		2
330A	1527992026	Adjustable Foot Front 30mm		2
344	1522344-05/8	Latch		1
505	1526715-40/2	Trimming Tub Black x 1710mm Long		1
521D	1526576-00/2	Hole Cover Latch		1
523	50299970009	Wheel Support Kit Dark Grey (Pack of 4)		1
523B	1521220-10/1	Stiffening Holder Roller		4
541	1526417-00/9	Hose Clamp		1
550B	1522345-03/0	Wiring Protection		1
552	1170542-00/3	Rail Basket Upper		2
567	1523236-03/0	Plaque (Speed Clip)		1
597	1520479-30/2	Basket Stop Front Dark Grey		2
597A	8996461234-05/7	Stopper Back Dark Grey		2
N.I.	4055046587	Fixing Clip Stud (4 Pieces)		1



9113031014

**MODEL: ESF66060X****PNC 911916660 02****EX. VIEW 9113031014  
DOOR COMPLETE  
ASSEMBLY**

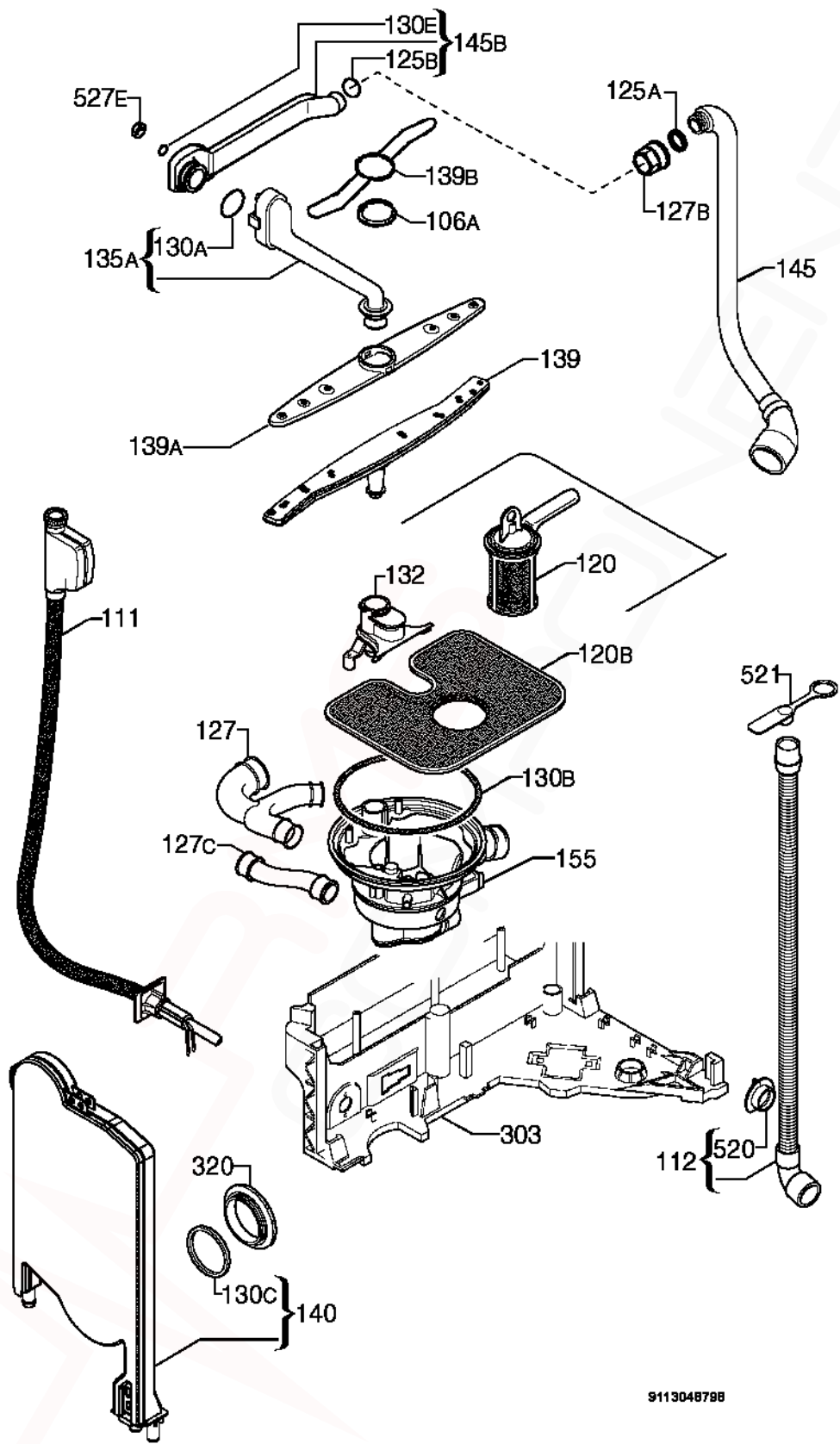
<b>ITEM</b>	<b>PART N°</b>	<b>DESCRIPTION Ex. 9113031014</b>	<b>QTY</b>
7	<b>50287927-00/3</b>	Microswitch Door	1
130	<b>1527401-00/2</b>	Door Gasket Bottom Black X 550mm Long	1
303	<b>1172007211</b>	Plinth Inox	1
305	<b>1170377426</b>	Door Inox	1
311	<b>50290200-00/0</b>	Inner Door Complete	1
344	<b>1170364002</b>	Latch Bridging Plug Complete	1
509A	<b>1520419-14/2</b>	Tie Hinge	1
518	<b>1526414-02/2</b>	Bridge Door Lock	1
523	<b>1170376006</b>	Stiffening Door	1
523C	<b>1170374027</b>	Support Plinth	1
N.I.	<b>1170476103</b>	Mat Small Plinth	1
N.I.	<b>1560050112</b>	Mat Support Plinth	1
N.I.	<b>50279682-00/4</b>	Plaque Door (Speed Clip)	1



9113050564

ITEM	PART N°	DESCRIPTION Ex. 9113050564	QTY
6	1113196008	Washing Motor Tachometric	1
6A	1528261-02/5	Drain Pump Reworked 50Hz	1
7A	1520393-11/5	Microswitch Anti-overflow	1
10	50297618-00/6	Heating Element 230V/2000W Ø32mm	1
11	50287485-00/2	Running Capacitor Shank	1
11B	0144400042	Interference Suppressor	1
12	1528189-02/8	Pressure Switch Level 65/45	1
12A	1528189-12/7	Pressure Switch Safety 123/98	1
16	1111433-00/7	Main Switch (O/I)	1
48	1113160004	Temperature Sensor Turbidity Sensor	1
110C	1170450-40/5	Tube Pressure Switch Safety x 515mm Long	1
110D	1170450-51/2	Tube Pressure Switch Level x 525mm Long	1
118	1113330128	Kit Dispenser Detergent	1
130	0208400152	Sealing Sleeve Temperature Sensor	1
506	50297120-00/3	Kit Support Float	1
523B	1171241001	Mount Pressure Switch	1
535	1118602000	Display	1
567	1171934019	Motor Bracket Buffer	1
587	973911916660021	Configured Electronic EDW1500	1
N.I.	1170598-00/5	Sponge Drain Pump "L"	1
N.I.	1170862-31/0	Power Cable AUS/NZ	1
N.I.	1526491-01/2	Electric Cable Anti-overflow Gasket	1
N.I.	1527921611	Harness Complete	1



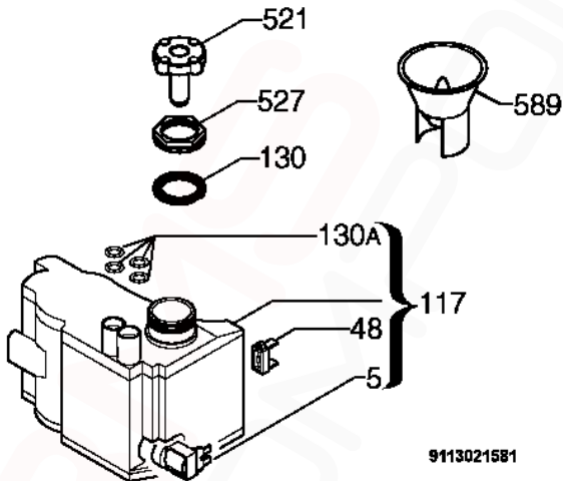


ITEM	PART N°	DESCRIPTION	Ex. 9113048798	QTY
106A	<b>1118134004</b>	Lower Part Spray Arm		1
111	<b>50295663-00/4</b>	Inlet Hose Water Block x 1800mm Long		1
112	<b>1526492424</b>	Discharge Pipe Complete x 2230mm Long		1
120	<b>50297774-00/7</b>	Drain Filter Complete Light Grey		1
120B	<b>1528918-00/4</b>	Dish Sieve Inox		1
125A	<b>50282650-00/6</b>	O-Ring Manifold Outer		1
125B	<b>50227938-00/3</b>	O-Ring Manifold Inner		1
127	<b>1118796208</b>	Pipe Union Y		1
127B	<b>1523118-20/4</b>	Pipe Union Manifold Dark Grey		1
127C	<b>1526716-01/2</b>	Pipe Union Decalcifier Sump		1
130A	<b>1172041004</b>	Rubber Gasket Channel Drainage		1
130B	<b>0208400147</b>	O-Ring Sump		1
130C	<b>50659231-00/0</b>	Round Seal Container Cup		1
130E	<b>1522802-00/6</b>	Sealing Strip		1
132	<b>1118495-91/8</b>	Column Support Lower Spray Arm		1
135A	<b>1170370025</b>	Channel Drainage Dark Grey Complete		1
139	<b>1118136702</b>	Spray Arm Bottom Dark Grey		1
139A	<b>1118949500</b>	Upper Spray Arm Dark Grey		1
139B	<b>1118131-00/0</b>	Spray Arm		1
140	<b>1170481-00/4</b>	Container Cup Small Electronic		1
145	<b>1528059-00/7</b>	Manifold Outer Ø32mm		1
145B	<b>1172029017</b>	Manifold Horizontal Dark Grey		1
155	<b>1527957128</b>	Sump Pipe Union Complete		1
303	<b>1526292204</b>	Basement		1
320	<b>1526272-10/7</b>	Grill Vapour Outlet Dark Grey		1
520	<b>N.P.A.</b>	Flange Discharge Pipe		-
521	<b>N.P.A.</b>	Stopper Drainage Hose		-
527E	<b>50286080-00/2</b>	Nut Water Distributor		1
N.I.	<b>1529175109</b>	Fixing Clamp Sensor 35.6		1
N.I.	<b>4055034963</b>	Service Kit Electric Cable Sensor		1

If a Customer needs to extend their Drain Hose, order the following components:  
0571400142 Hose Drain (2M length), 0182200002 Ferrule Hose Joiner (19mm)  
and 2 x 0005001019 Clamp.

For extensions less than 2 metres, use ES5323K Kit Hose Flex Drain (1M)

NOTE: Total Drain Hose length must not exceed 4 metres.



9113021581

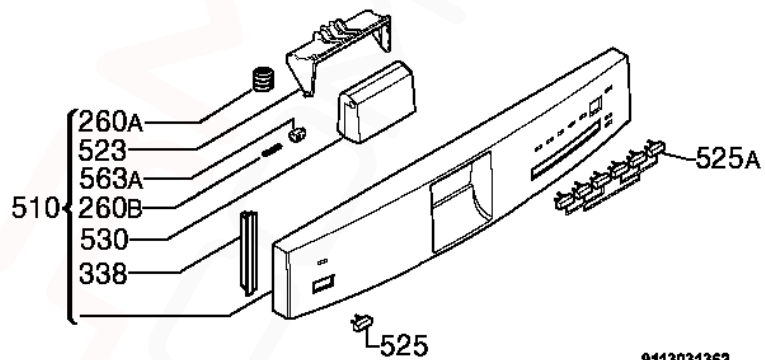
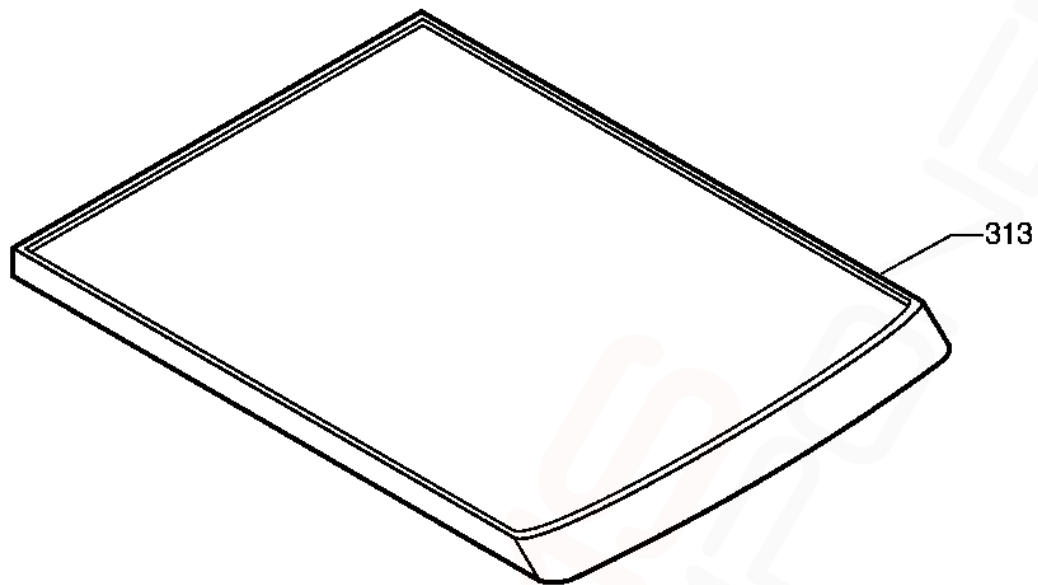
9113021581

**MODEL: ESF66060X**

**PNC 911916660 02**

**EX. VIEW 9113021581  
REGENERATION TANK  
ASSEMBLY**

<b>ITEM</b>	<b>PART N°</b>	<b>DESCRIPTION</b>	<b>Ex. 9113021581</b>	<b>QTY</b>
5	<b>1528765-01/7</b>	Regeneration Electric Valve Water Softener		1
48	<b>1528882-01/0</b>	Salt Sensor Decalcifier		1
117	<b>50286081-00/0</b>	Decalcifier		1
130	<b>1521128-10/6</b>	Gasket Decalcifier		1
130A	<b>1526505-00/1</b>	Grommet Decalcifier		4
521	<b>1526411-00/2</b>	Stopples Decalcifier		1
527	<b>1526449-10/1</b>	Ring Nut Decalcifier Dark Grey		1
589	<b>1172107300</b>	Filling Funnel Dishwasher Salt Transparent		1



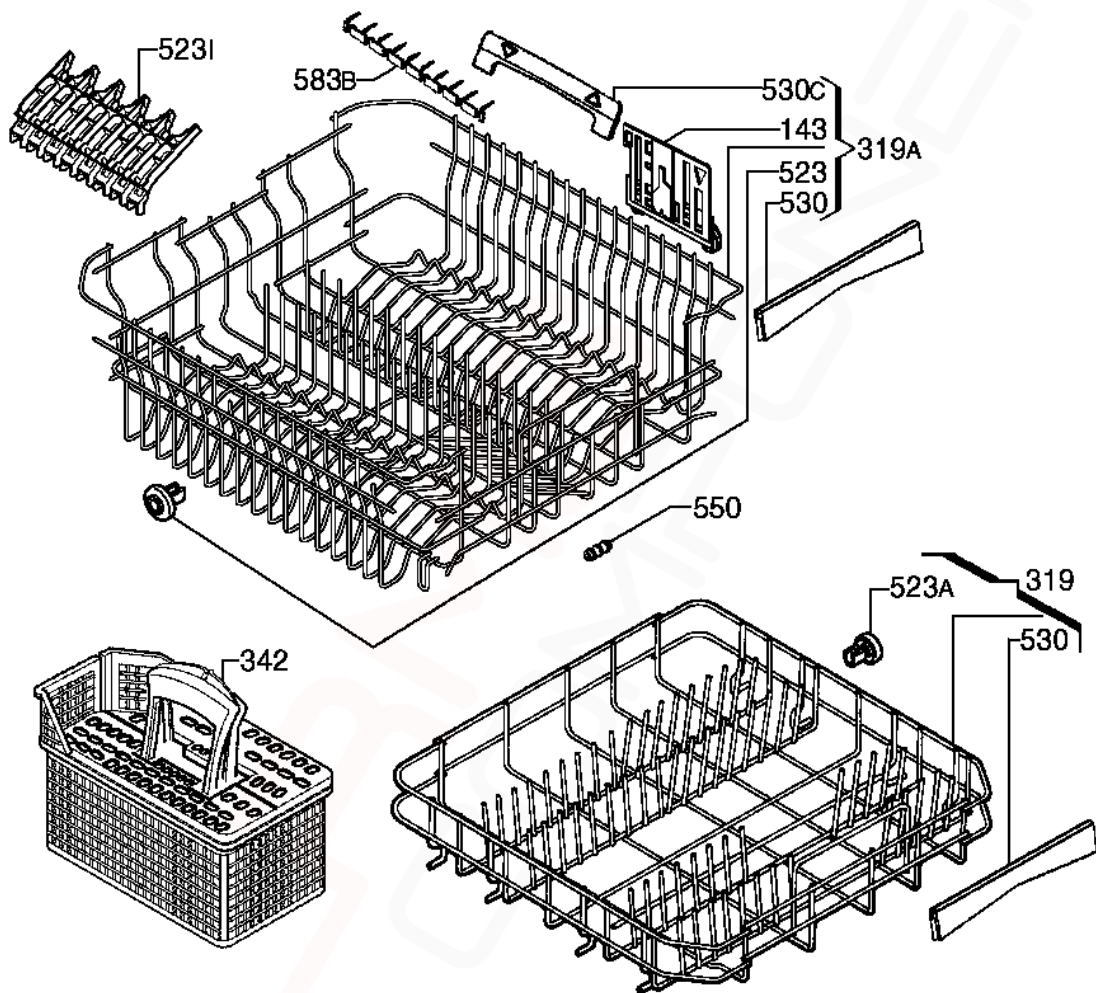
9113031362

9113031362

**MODEL: ESF66060X****PNC 911916660 02****EX. VIEW 9113031362  
PANEL TOP and  
CONTROL PANEL ASSEMBLY**

<b>ITEM</b>	<b>PART N°</b>	<b>DESCRIPTION</b>	<b>Ex. 9113031362</b>	<b>QTY</b>
260A	<b>1171020009</b>	Spring Handle		1
260B	<b>1527808008</b>	Spring Side Handle		1
313	<b>1171793316</b>	Work Top		1
338	<b>1525578801</b>	Side Plate Grey		2
510	<b>1170691800</b>	Control Panel Silkscreened Complete		1
523	<b>1170464026</b>	Handle Bracket		1
525	<b>1528655317</b>	On/Off Button Inox		1
525A	<b>1118779196</b>	Wash Mode Button Inox		1
530	<b>1172470203</b>	Handle Control Panel Inox		1
563A	<b>1527582009</b>	Pin Handle		1

**NOTE:** In cases where the Work Top has been removed for under counter installation, supply 2 x **1170209-00/9 BRACKET FIXING TOP** and 1 x **ES6060 KIT TAPE FOIL STEAM PROTECTION** (NOT supplied in original pack)



9113048390

**MODEL: ESF66060X****PNC 911916660 02****EX. VIEW 9113048390  
BASKET ASSEMBLY**

<b>ITEM</b>	<b>PART N°</b>	<b>DESCRIPTION</b>	<b>Ex. 9113048390</b>	<b>QTY</b>
143	<b>1172121004</b>	Adjustment Dishwasher Basket Right		1
319	<b>1170652802</b>	Dishwasher Basket Bottom Dark Grey		1
319A	<b>1170369068</b>	Dishwasher Basket Upper Dark Grey		1
342	<b>1118401502</b>	Cutlery Basket Complete Dark Grey		1
523	<b>4055039723</b>	Wheel Upper Basket Complete		1
523A	<b>50286965-00/4</b>	Wheel Kit Dark Grey (8 Pieces)		1
523I	<b>1118886702</b>	Rack Cup Dark Grey		4
530	<b>1118879012</b>	Handle Front		2
530C	<b>4071354775</b>	Handle Side Complete		2
550	<b>8996461804602</b>	Rubber Buffer Dishwasher Basket Upper		2
583B	<b>1118902707</b>	Spacer Dark Grey		1