



**ELECTROLUX HOME PRODUCTS PTY LTD**  
ABN 51 004 762 341

Technical Publication N° DW261

Issue: &  
Date: (#/&

**WEB SITE ADDRESS: [www.partnship.com.au](http://www.partnship.com.au)**

***ELECTROLUX***

***ELECTRONIC DISHWASHER***

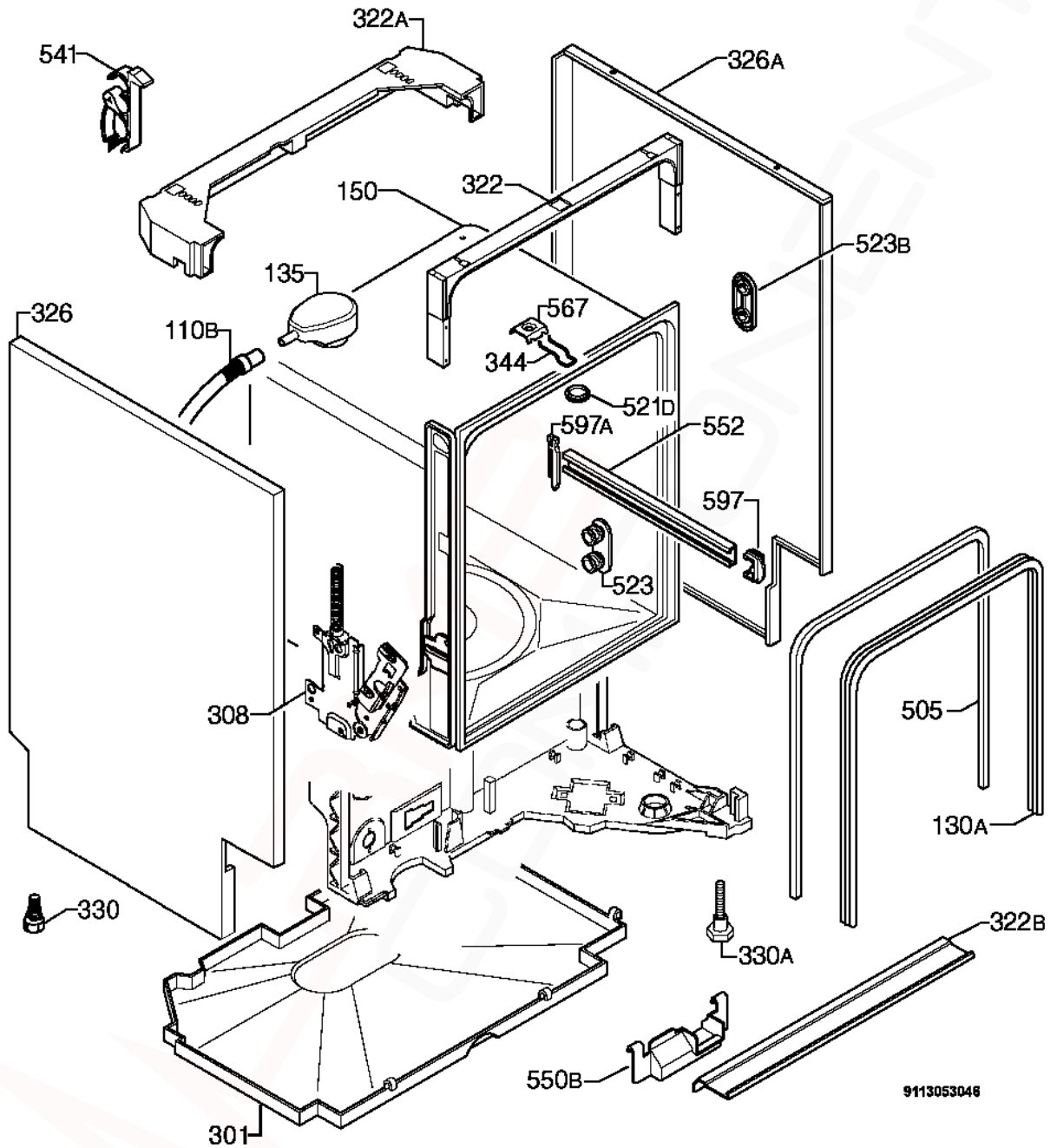
**TO BE USED IN CONJUNCTION WITH  
*CIRCUIT and WIRING DIAGRAM PUBLICATION - DW230.***

***MODEL:***

**ESF65060W  
PNC 911915620 02**

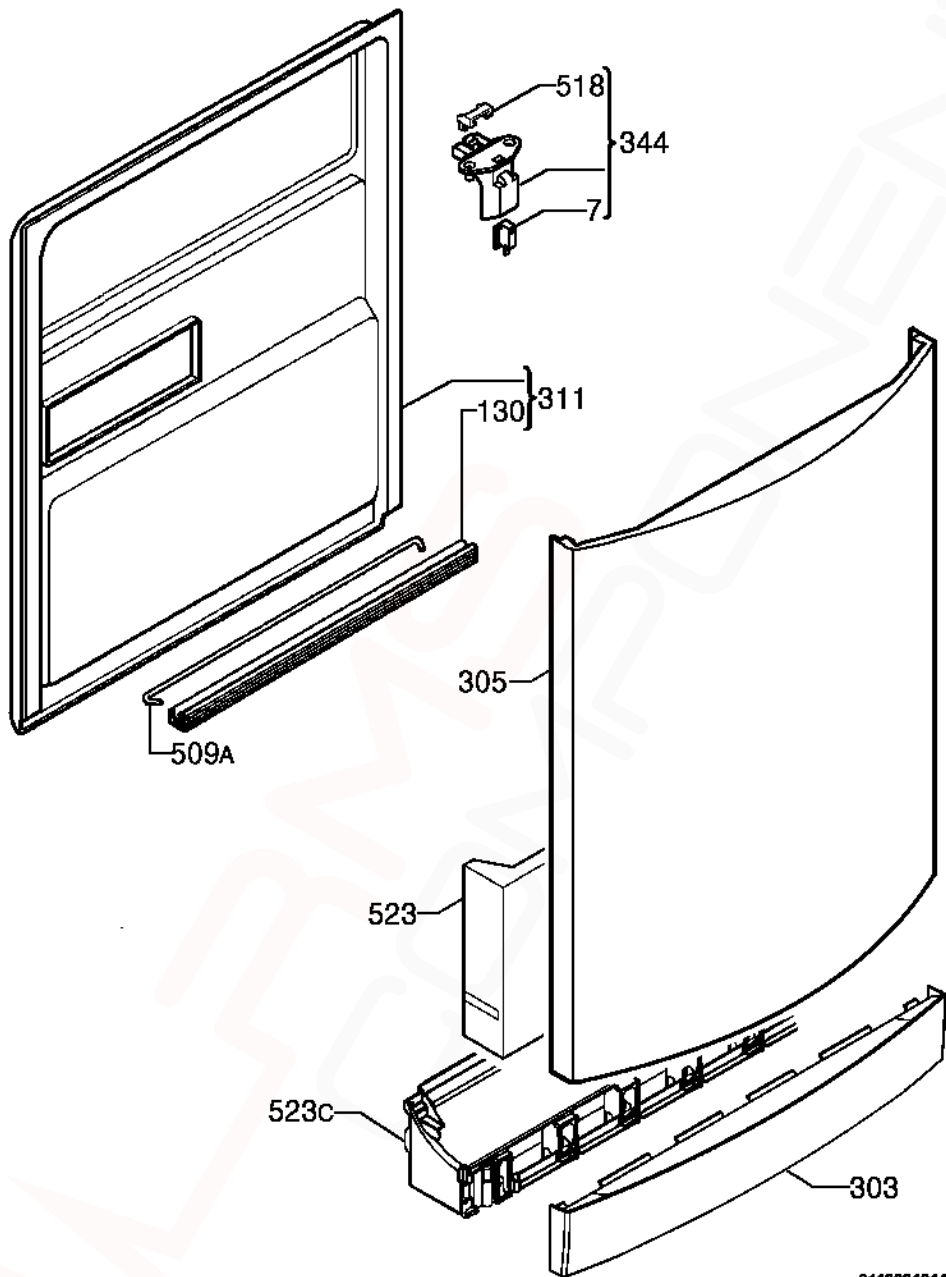
<b>VARIANT CHANGE SUMMARY</b>	
<b>02</b>	Air Guide Active Dry, Kit Door Hinge, Trim Tub Black, Detergent Dispenser, Sump, ON/OFF Button, Upper Basket Assy, Wheel Upper Basket

<b>First Release Dates:</b>	
ESF65060W/911915620 02	02/07/2009



9113053046

<b>ITEM</b>	<b>PART N°</b>	<b>DESCRIPTION</b>	<b>Ex. 9113053046</b>	<b>QTY</b>
110B	<b>1527937-01/3</b>	Tube Drying x 680mm Long		1
130A	<b>1171265026</b>	Sealing Outer x 1730mm Long		1
135	<b>1171458118</b>	Air Guide ACTIVE DRYING		1
150	<b>N.P.A.</b>	Tub		-
301	<b>1526298-07/8</b>	Bottom Cabinet		1
308	<b>4055031332</b>	Kit Door Hinge Right-Left		1
322	<b>1525280358</b>	Crossbar Front Upper		1
322A	<b>1170350-01/9</b>	Crossbar Back Upper		1
322B	<b>1527256-10/9</b>	Crossbar Front Bottom		1
326	<b>1170380818</b>	Side Panel Left White		1
326A	<b>1170380917</b>	Side Panel Right White		1
330	<b>1521870-01/2</b>	Adjustable Foot		2
330A	<b>1527992026</b>	Adjustable Foot Front 30mm		2
344	<b>1522344-05/8</b>	Latch		1
505	<b>1526715402</b>	Trimming Tub Black x 1710mm Long		1
521D	<b>1526576-00/2</b>	Hole Cover Latch		1
523	<b>50299970009</b>	Wheel Support Kit Dark Grey (Pack of 4)		1
523B	<b>1521220-10/1</b>	Stiffening Holder Roller		4
541	<b>1526417-00/9</b>	Hose Clamp		1
550B	<b>1522345-03/0</b>	Wiring Protection		1
552	<b>1170542-00/3</b>	Rail Basket Upper		2
567	<b>1523236-03/0</b>	Plaque (Speed Clip)		1
597	<b>1520479-30/2</b>	Basket Stop Front Dark Grey		2
597A	<b>8996461234-05/7</b>	Stopper Back Dark Grey		2
N.I.	<b>4055046587</b>	Fixing Clip Stud (4 Pieces)		1



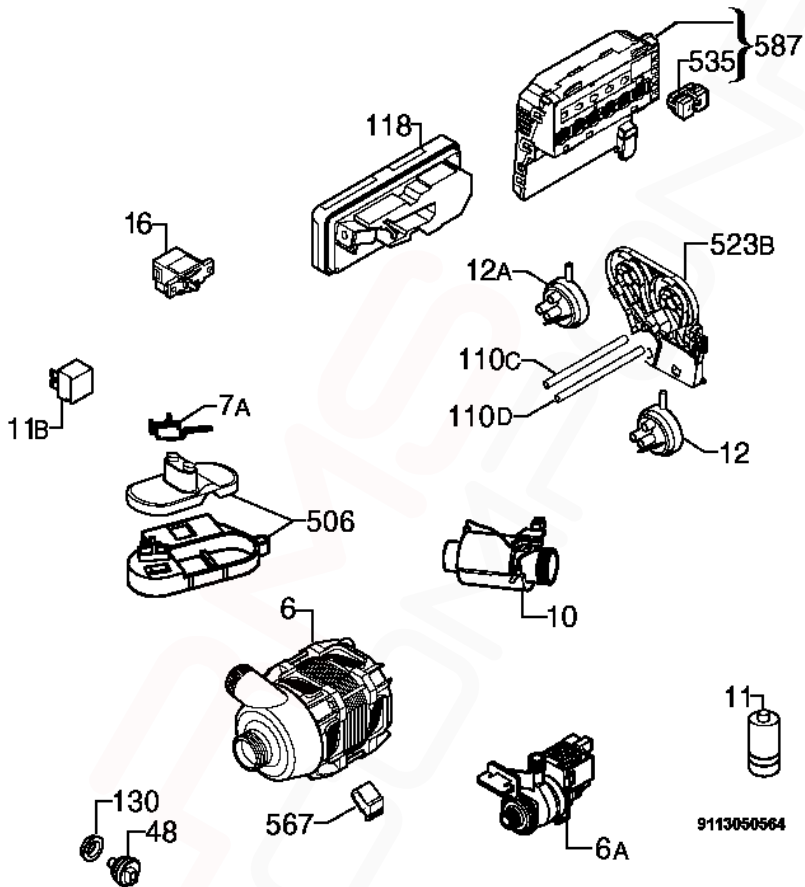
9113031014w

**MODEL: ESF65060W**

**PNC 911915620 02**

**EX. VIEW 9113031014  
DOOR COMPLETE  
ASSEMBLY**

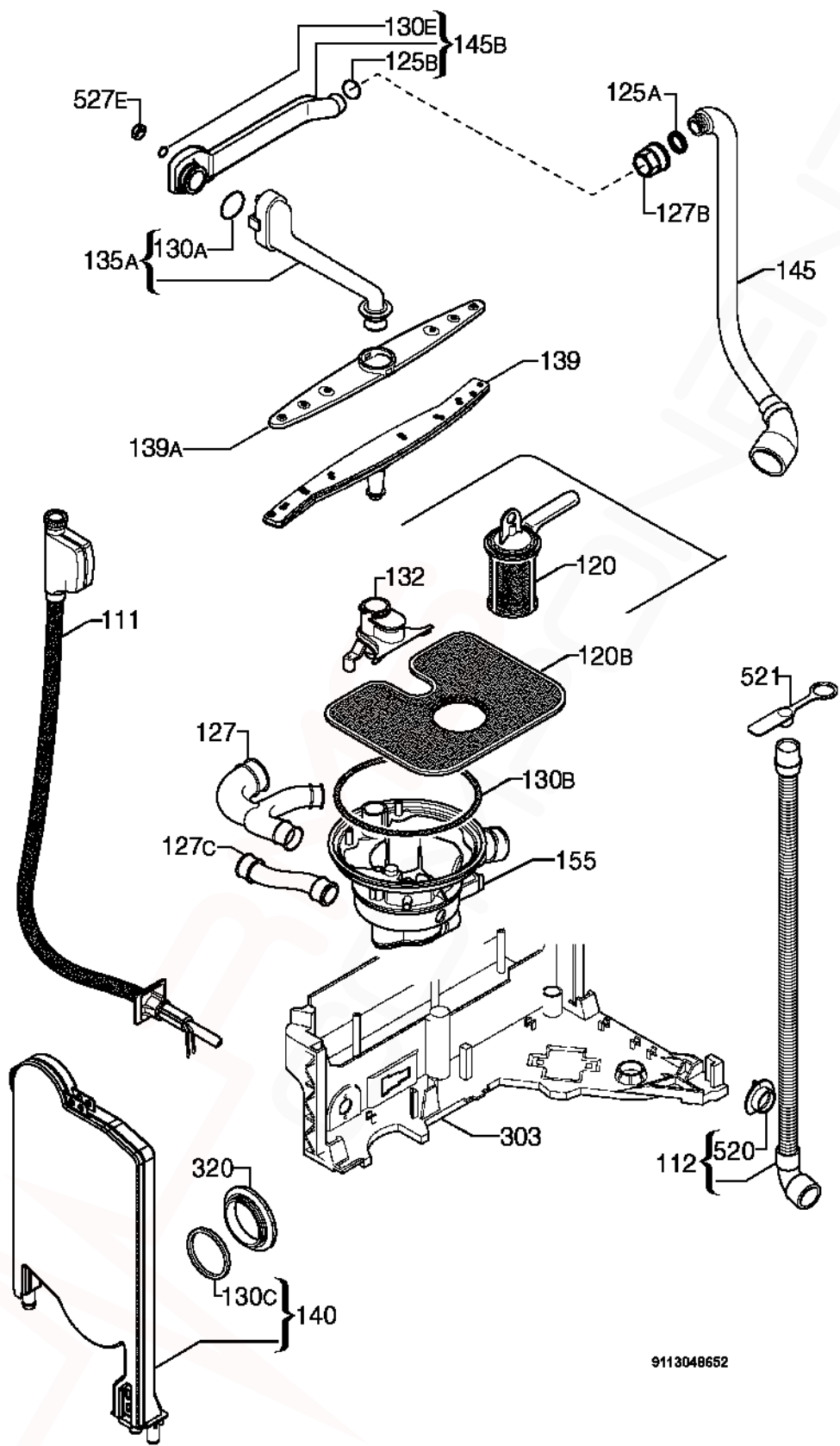
<b>ITEM</b>	<b>PART N°</b>	<b>DESCRIPTION</b>	<b>Ex. 9113031014</b>	<b>QTY</b>
7	<b>50287927-00/3</b>	Microswitch Door		1
130	<b>1527401-00/2</b>	Door Gasket Bottom Black X 550mm Long		1
303	<b>1172007419</b>	Plinth White		1
305	<b>1170377-11/1</b>	Door White		1
311	<b>50290200-00/0</b>	Inner Door Complete		1
344	<b>1170364002</b>	Latch Bridging Plug Complete		1
509A	<b>1520419-14/2</b>	Tie Hinge		1
518	<b>1526414-02/2</b>	Bridge Door Lock		1
523	<b>1170376006</b>	Stiffening Door		1
523C	<b>1170374027</b>	Support Plinth		1



9113050564

<b>ITEM</b>	<b>PART N°</b>	<b>DESCRIPTION Ex. 9113050564</b>	<b>QTY</b>
6	<b>50299965009</b>	Washing Motor Tachometric 2800 RPM	1
6A	<b>1528261-02/5</b>	Drain Pump 50Hz	1
7A	<b>1520393-11/5</b>	Microswitch Anti-overflow	1
10	<b>50297618-00/6</b>	Heating Element 230V/2000W Ø32mm	1
11	<b>50287485-00/2</b>	Running Capacitor Shank	1
11B	<b>0144400042</b>	Interference Suppressor	1
12	<b>1528189-02/8</b>	Pressure Switch Level 65/45	1
12A	<b>1528189-12/7</b>	Pressure Switch Safety 123/98	1
16	<b>1111433-00/7</b>	Main Switch (O/I)	1
48	<b>1113160004</b>	Temperature Sensor Turbidity Sensor	1
110C	<b>1170450-40/5</b>	Tube Pressure Switch Safety x 515mm Long	1
110D	<b>1170450-51/2</b>	Tube Pressure Switch Level x 525mm Long	1
118	<b>1113330110</b>	Kit Dispenser Detergent	1
130	<b>0208400152</b>	Sealing Sleeve Temperature Sensor	1
506	<b>50297120-00/3</b>	Kit Support Float	1
523B	<b>1170351-00/9</b>	Mount Pressure Switch	1
535	<b>1529380-00/6</b>	Display	1
567	<b>1171934019</b>	Motor Bracket Buffer	1
587	<b>973911915620026</b>	Configured Electronic EDW1500	1
N.I.	<b>1170598-00/5</b>	Sponge Drain Pump "L"	1
N.I.	<b>1170862-31/0</b>	Power Cable AUS/NZ	1
N.I.	<b>1526491-01/2</b>	Electric Cable Anti-overflow Gasket	1
N.I.	<b>1527921611</b>	Harness Complete	1



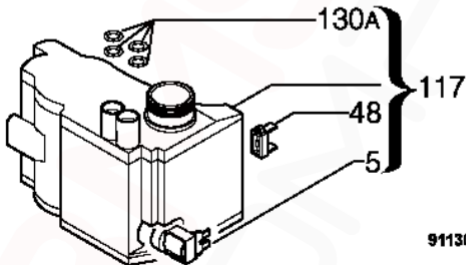
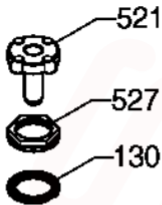


ITEM	PART N°	DESCRIPTION Ex. 9113048652	QTY
111	<b>50295663-00/4</b>	Inlet Hose Water Block x 1800mm Long	1
112	<b>1526492424</b>	Discharge Pipe Complete x 2230mm Long	1
120	<b>50297774-00/7</b>	Drain Filter Complete Light Grey	1
120B	<b>1528918-00/4</b>	Dish Sieve Inox	1
125A	<b>50282650-00/6</b>	O-Ring Manifold Outer	1
125B	<b>50227938-00/3</b>	O-Ring Manifold Inner	1
127	<b>1118796208</b>	Pipe Union Y	1
127B	<b>1523118-20/4</b>	Pipe Union Manifold Dark Grey	1
127C	<b>1526716-01/2</b>	Pipe Union Decalcifier Sump	1
130A	<b>1172041004</b>	Rubber Gasket Channel Drainage	1
130B	<b>8996461217-70/6</b>	O-Ring Sump	1
130C	<b>50659231-00/0</b>	Round Seal Container Cup	1
130E	<b>1522802-00/6</b>	Sealing Strip	1
132	<b>1118495-91/8</b>	Column Support Lower Spray Arm	1
135A	<b>1170370025</b>	Channel Drainage Dark Grey Complete (not as illustrated)	1
139	<b>1118136702</b>	Spray Arm Bottom Dark Grey	1
139A	<b>1118949500</b>	Upper Spray Arm Dark Grey	1
140	<b>1170481-00/4</b>	Container Cup Small Electronic	1
145	<b>1528059-00/7</b>	Manifold Outer Ø32mm	1
145B	<b>1172029017</b>	Manifold Horizontal Dark Grey (not as illustrated)	1
155	<b>1527957128</b>	Sump Pipe Union Complete	1
303	<b>1526292-09/7</b>	Basement	1
320	<b>1526272-10/7</b>	Grill Vapour Outlet Dark Grey	1
520	<b>N.P.A.</b>	Flange Discharge Pipe	-
521	<b>N.P.A.</b>	Stopper Drainage Hose	-
527E	<b>50286080-00/2</b>	Nut Water Distributor	1
N.I.	<b>1529175109</b>	Fixing Clamp Sensor 35.6	1
N.I.	<b>4055034963</b>	Service kit Electric Cable Sensor	1
N.I.	<b>1172041004</b>	Seal Channel Drainage	1

If a Customer needs to extend their Drain Hose, order the following components:  
0571400142 Hose Drain (2M length), 0182200002 Ferrule Hose Joiner (19mm)  
and 2 x 0005001019 Clamp.

For extensions less than 2 metres, use ES5323K Kit Hose Flex Drain (1M)

NOTE: Total Drain Hose length must not exceed 4 metres.



9113021581

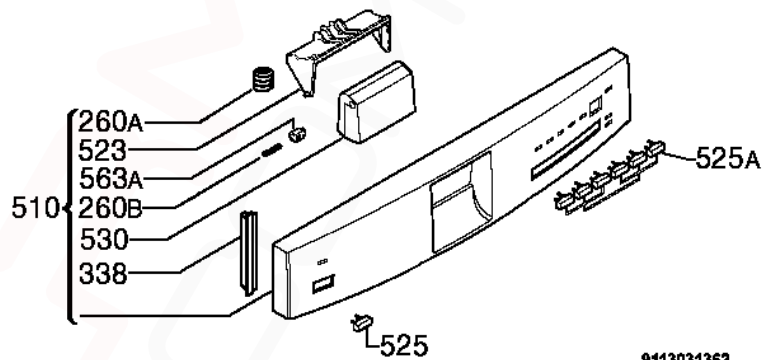
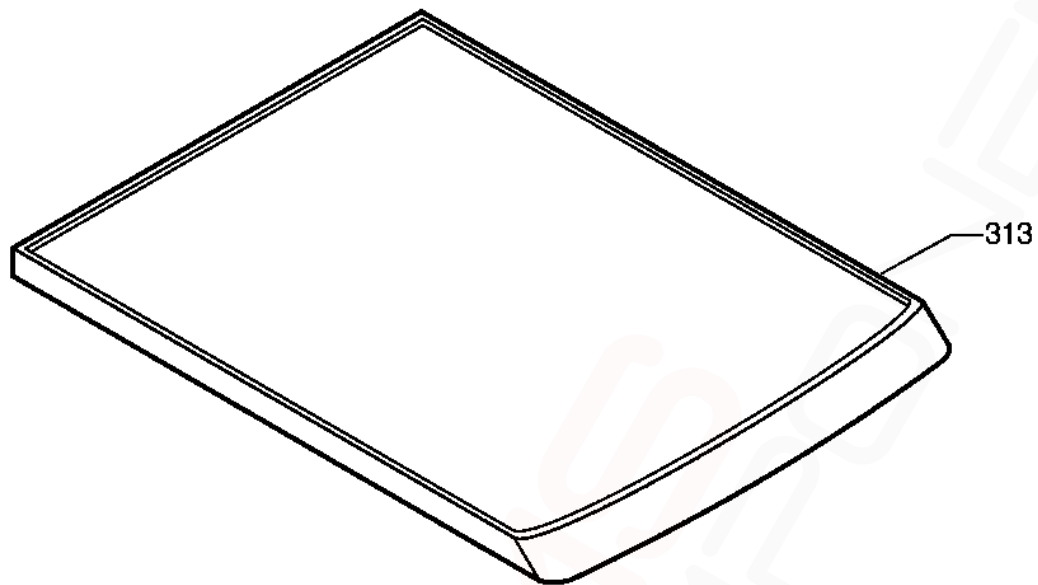
9113021581

**MODEL: ESF65060W**

**PNC 911915620 02**

**EX. VIEW 9113021581  
REGENERATION TANK  
ASSEMBLY**

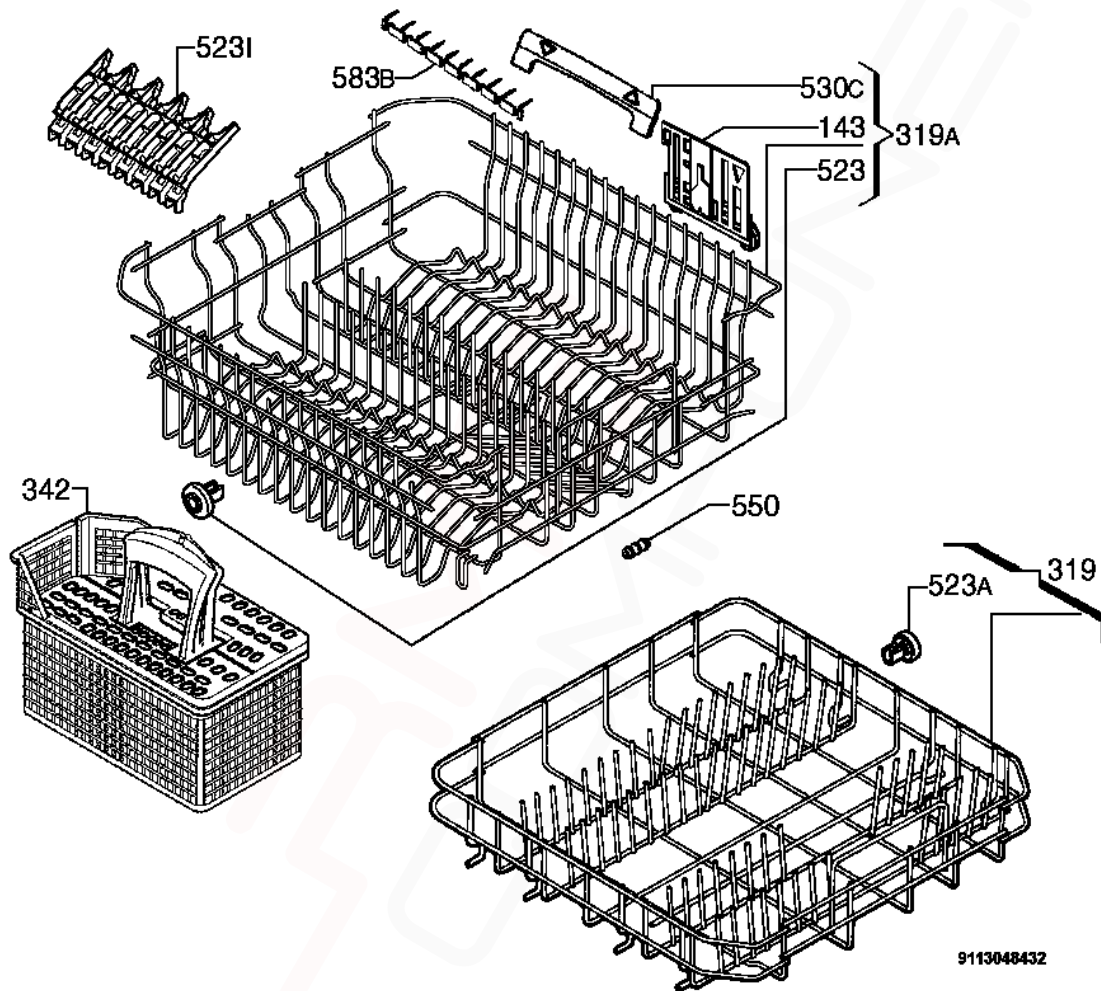
<b>ITEM</b>	<b>PART N°</b>	<b>DESCRIPTION</b>	<b>Ex. 9113021581</b>	<b>QTY</b>
5	<b>1528765-01/7</b>	Regeneration Electric Valve Water Softener BITRON		1
48	<b>1528882-01/0</b>	Salt Sensor Decalcifier T&P		1
117	<b>50286081-00/0</b>	Decalcifier		1
130	<b>1521128-10/6</b>	Gasket Decalcifier		1
130A	<b>1526505-00/1</b>	Grommet Decalcifier		4
521	<b>1526411-00/2</b>	Stopple Decalcifier		1
527	<b>1526449-10/1</b>	Ring Nut Decalcifier Dark Grey		1
589	<b>1172107300</b>	Filling Funnel Dishwasher Salt Transparent		1



9113031362

<b>ITEM</b>	<b>PART N°</b>	<b>DESCRIPTION</b>	<b>Ex. 9113031362</b>	<b>QTY</b>
260A	<b>1171020-00/9</b>	Spring Handle		1
260B	<b>1527808-00/8</b>	Spring Side Handle		1
313	<b>1171793-01/9</b>	Work Top		1
338	<b>1525578-00/9</b>	Side Plate White		2
510	<b>1171819-50/9</b>	Control Panel Silkscreened Complete		1
523	<b>1170464-02/6</b>	Handle Bracket		1
525	<b>1528655218</b>	On/Off Button Silver		1
525A	<b>1118779-17/0</b>	Button Cycle Silver		1
530	<b>1172470-10/4</b>	Handle Control Panel Silver		1
563A	<b>1527582-00/9</b>	Pin Handle		1

**NOTE:** In cases where the Work Top has been removed for under counter installation, supply 2 x **1170209-00/9 BRACKET FIXING TOP** and 1 x **ES6060 KIT TAPE FOIL STEAM PROTECTION** (NOT supplied in original pack)



9113048432

9113048432

**MODEL: ESF65060W****PNC 911915620 02****EX. VIEW 9113048432  
BASKET ASSEMBLY**

<b>ITEM</b>	<b>PART N°</b>	<b>DESCRIPTION</b>	<b>Ex. 9113048432</b>	<b>QTY</b>
143	<b>1172121004</b>	Adjustment Dishwasher Basket Right		1
319	<b>1170652000</b>	Dishwasher Basket Bottom Dark Grey		1
319A	<b>1170456360</b>	Dishwasher Basket Upper Dark Grey		1
342	<b>1118401502</b>	Cutlery Basket Complete Dark Grey		1
523	<b>4055039723</b>	Wheel Upper Basket Complete		2
523A	<b>50286965-00/4</b>	Wheel Kit Dark Grey (8 Pieces)		1
523I	<b>1118886702</b>	Rack Cup Dark Grey		4
530C	<b>4071354775</b>	Handle Side Complete		1
550	<b>8996461804602</b>	Rubber Buffer Dishwasher Basket Upper		2
583B	<b>1118902707</b>	Spacer Dark Grey		4