



ELECTROLUX HOME PRODUCTS PTY LTD

Technical Publication N° DW149

Issue: 1
Date: 02/06

WEB SITE ADDRESS: <http://www.partnship.com.au>

ELECTROLUX
DISHWASHER

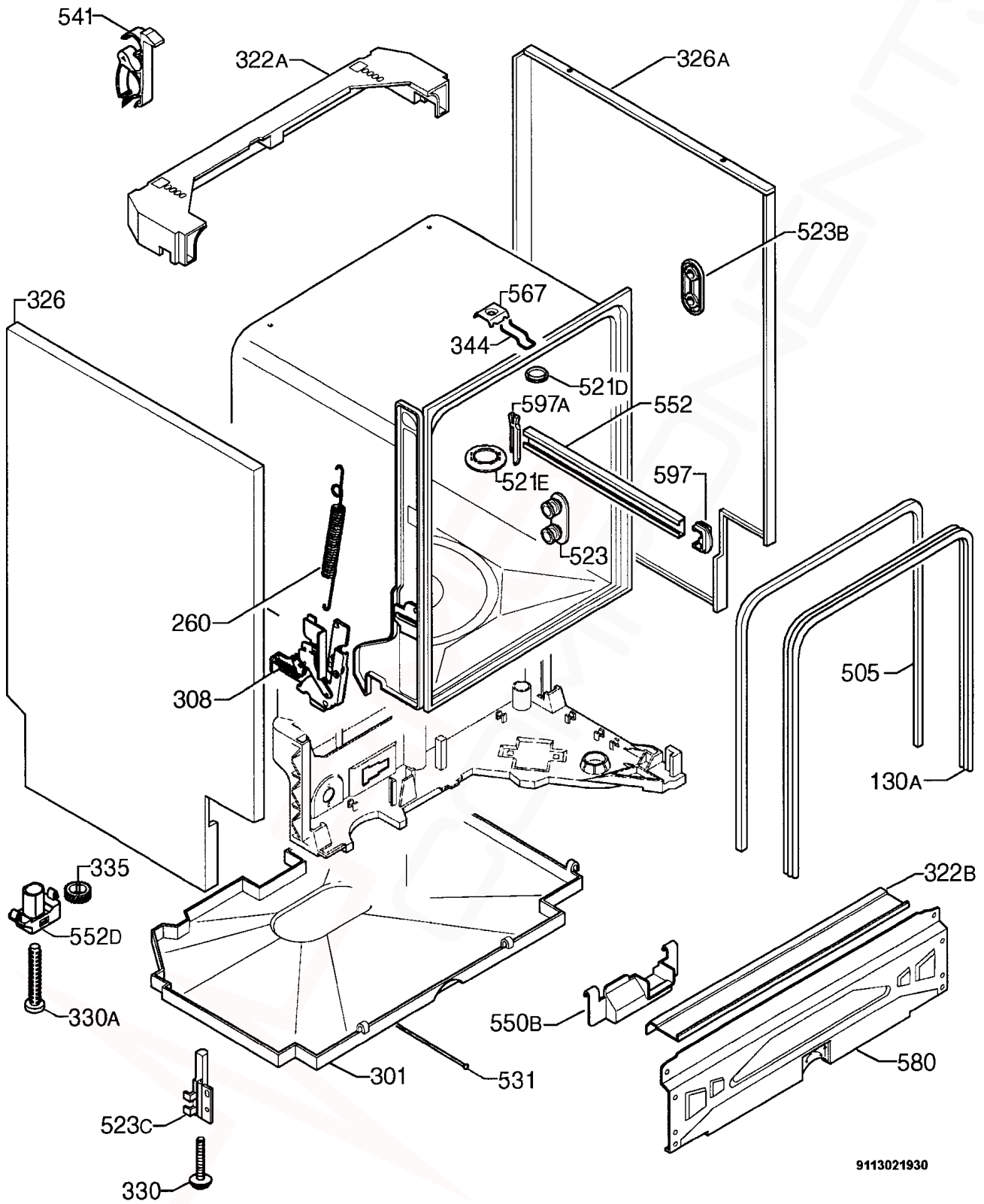
SECTION	PAGE N°
OUTER PANEL & LINER ASSEMBLY	2 & 3
ELECTRICAL ASSEMBLY	4 & 5
WATER CIRCUIT ASSEMBLY	6 & 7
WATER SOFTENER ASSEMBLY	8 & 9
CONTROL PANEL ASSEMBLY	10 & 11
BASKET ASSEMBLY	12 to 13
DOOR ASSEMBLY	14 & 15
PROGRAM TABLE	16
WIRING DIAGRAM	17
CIRCUIT DIAGRAM	18

MODEL:

ESF6125X
PNC 911 949 216

MODEL: ESF6125X

EX. VIEW DRAWING 5547
OUTER PANEL & LINER ASSEMBLY

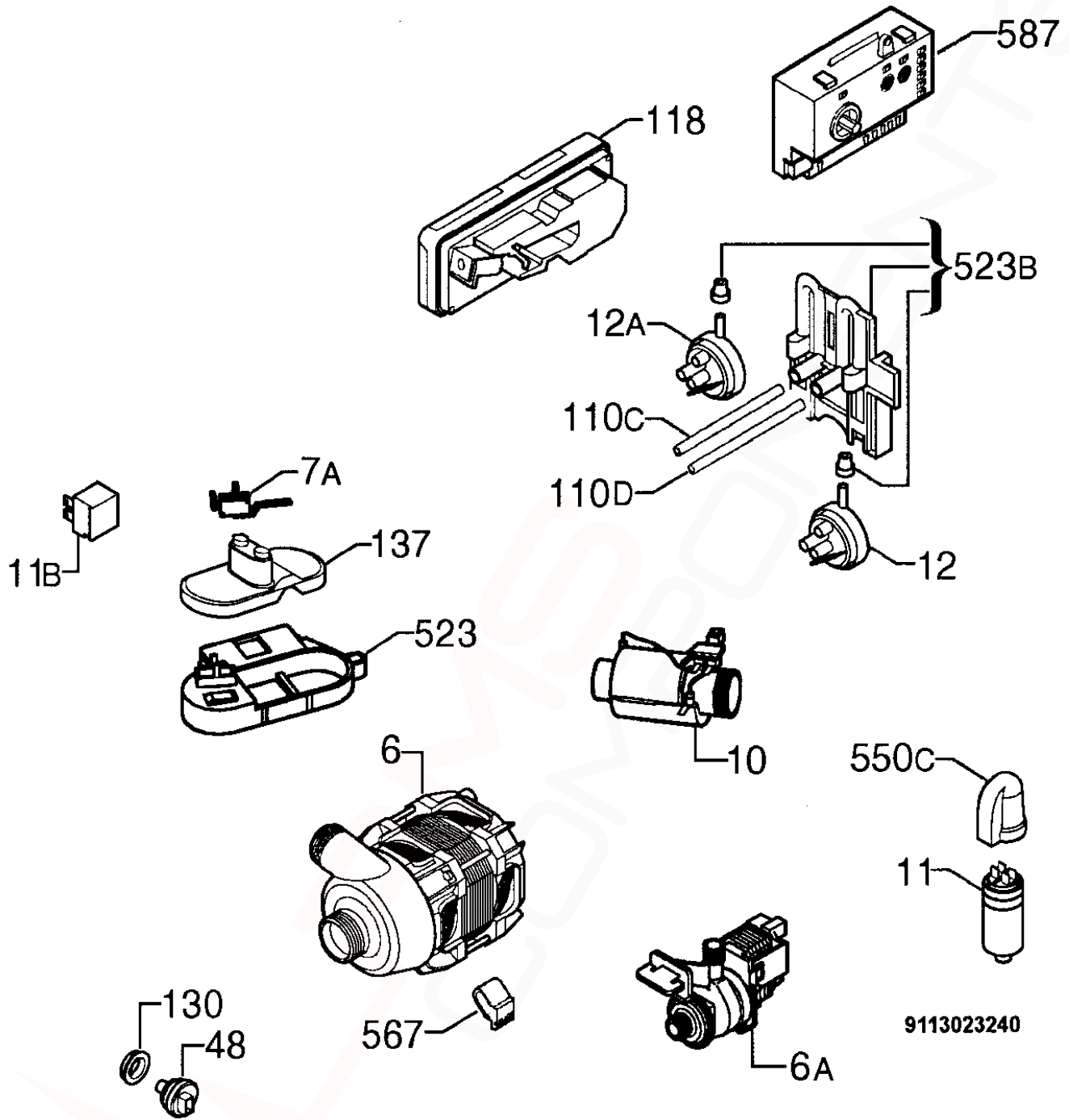


9113021930

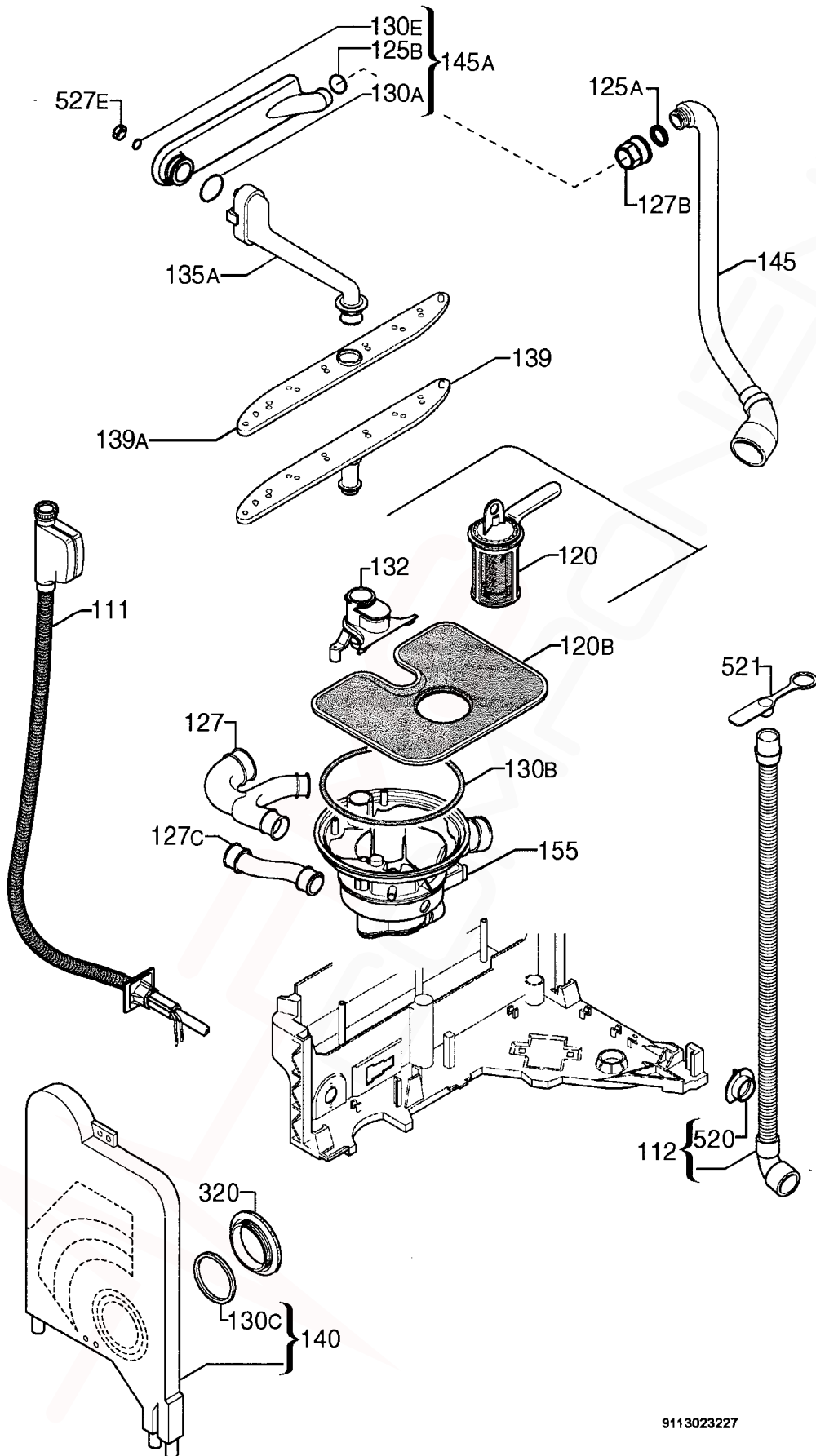
ITEM	PART NUMBER	DESCRIPTION Ex. 5547	QTY
130A	1524445-01/0	Sealing Sleeve, Outer, L=1730	1
260	1526645-12/0	Spring, Hinge	2
301	1526298-03/7	Bottom, Cabinet	1
308	50286354-00/1	Kit, Door Hinge, Right-Left, DIVA-45/60	2
322A	1526299-02/7	Crossbar, Back, Upper	1
322B	1527256-10/9	Crossbar, Front, Bottom	1
326	1526325-23/6	Side Panel, Left	1
326A	1526325-33/5	Side Panel, Right	1
330	1526617-02/0	Adjustable Foot, Front	2
330A	1526994-00/7	Adjustable Foot, Central	1
335	1527142-00/2	Cog Wheel	1
344	1522344-05/8	Latch	1
505	1526715-01/4	Trimming, Tub, Cabinet	1
521D	1526576-00/2	Hole Cover, Latch	1
521E	1527051-10/4	Hole Cover, Tub	1
523	50282756-00/1	Wheel Support Kit, Dark Grey, 4pcs.	4
523B	1521220-03/6	Re-Enforcement, Bracket	4
523C	1526315-03/9	Foot Support, Front, Left	1
523C	1526315-13/8	Foot Support, Front, Right	1
531	1523262-21/8	Adjusting Screw, Leg, Central	1
541	1526417-00/9	Hose Clamp	1
550B	1522345-03/0	Wiring Protection	1
552	1520512-05/2	Rail Basket, Upper	2
552D	1523698-04/9	Guidance, Foot, Central	1
567	1523236-03/0	Plaque	1
580	1526314-05/7	Door Lock, Front, Bottom, DIVA/60	1
597	1520479-20/3	Stopper, Front, Dark Grey	1
597A	1525376-20/6	Stop, Rail End (Grey)	2

MODEL: ESF6125X

EX. VIEW DRAWING 5546
ELECTRICAL ASSEMBLY

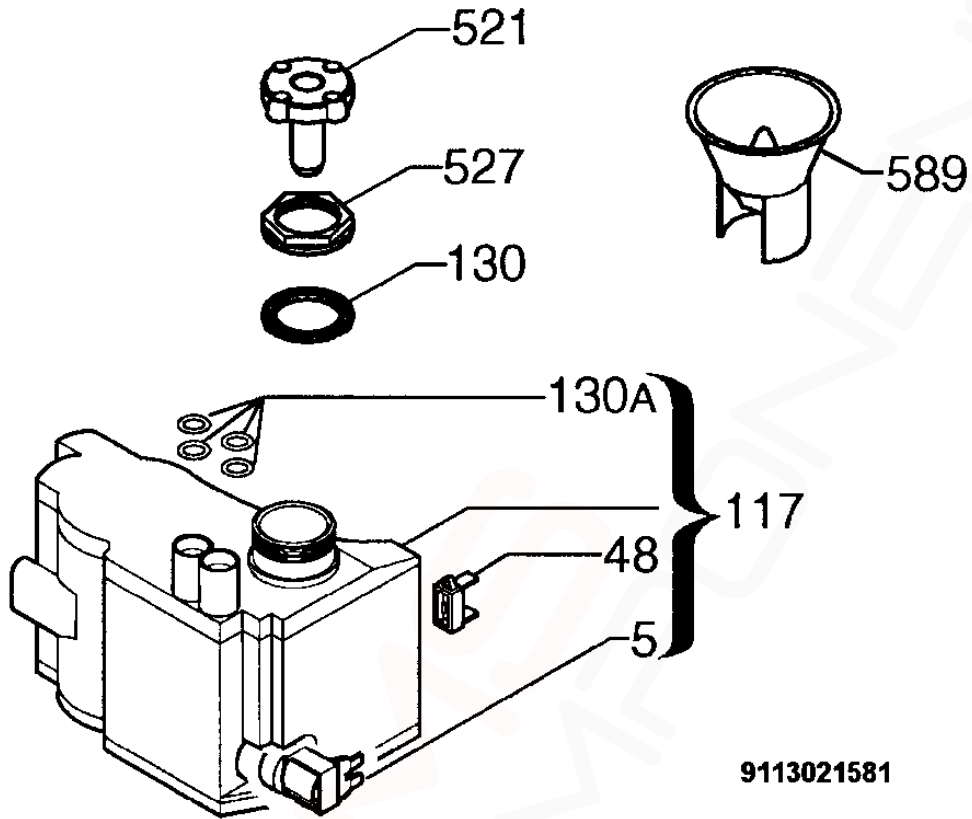


ITEM	PART NUMBER	DESCRIPTION Ex. 5546	QTY
6	1111469-40/7	Washing Motor, 2600 Rpm	1
6A	50286272-00/5	Drain Pump, 50Hz	1
7A	1520393-11/5	Micro Switch, Anti Over Flow	1
10	50280071-00/7	Heater, 230V./2000W.-D.32mm.	1
11	1526356-11/6	Capacitor	1
11B	1526204-02/7	Interference Suppressor	1
12	1526370-02/6	Pressure Switch, Level, 65/45	1
12A	1526370-14/1	Pressure Switch, Safety,123/98	1
48	1115912-06/3	Temperature Sensor	1
110C	1526510-01/9	Hose, Pressure Switch, Safety, L=280	1
110D	1526510-11/8	Hose, Pressure Switch, Level, L=300	1
118	50285882-00/2	Kit, Dispenser, Detergent	1
130	1118535-03/6	Sealing Sleeve, Temperature Sensor	1
137	1526761-01/8	Float	1
523	1520169-06/9	Support, Float	1
523B	1526412-00/0	Holder, Pressure Switch	1
550C	8996461234-30/5	Cover Cap	1
567	1118709-01/1	Rubber Damper, Circulation Pump	1
587	973911949216007	PCB, Configured, EDW500-	1
NI	1526453-31/9	Cord, Service, Australia	1



9113023227

ITEM	PART NUMBER	DESCRIPTION Ex. 5548	QTY
111	1526443-03/9	Inlet Hose, Water Block, L=1500	1
112	1526492-01/0	Outlet Tube, Complete, L=1930	1
120	1526612-02/1	Drain Filter, Complete	1
120B	1524360-00/3	Filter, Inox	1
125A	50282650-00/6	O-Ring, Manifold, Outer	1
125B	50227938-00/3	O-Ring, Manifold, Inner	1
127	1118796-00/0	Pipe Union, Y---D.= 32mm.	1
127B	1523118-20/4	Pipe Union, Manifold, Dark Grey	1
127C	1526716-01/2	Pipe Union, Decalcifier, Sump	1
130A	1523119-01/2	Seal, Channel Drainage	1
130B	8996461217-70/6	O-Ring, Sump	1
130C	50659231-00/0	Round Seal, Container Cup	1
130E	1522802-00/6	Sealing Strip	1
132	1118495-90/0	Column, Support, Lower Spray Arm	1
135A	50281041-00/9	Channel Drainage, Grey, Complete, DIVA 45/60	1
139	1526523-00/4	Lower Spray Arm, Light Grey, DIVA/60	1
139A	1526520-03/4	Spray Arm, Upper, Grey	1
140	1526296-13/0	Container Cup, Small, Electronic	1
145	1528059-00/7	Manifold, Outer, D= 32mm.	1
145A	1526386-20/4	Manifold, Horizontal, Dark Grey, DIVA/60	1
155	1527957-00/3	Sump, Pipe Union, Complete, DIVA/60	1
320	1526272-10/7	Grill, Vapour Outlet, Dark Grey	1
520	1526862-00/6	Flange, Discharge Pipe	1
521	1527389-00/9	Stopper, Drainage Hose	1
527E	50286080-00/2	Nut, Water Distributor	1

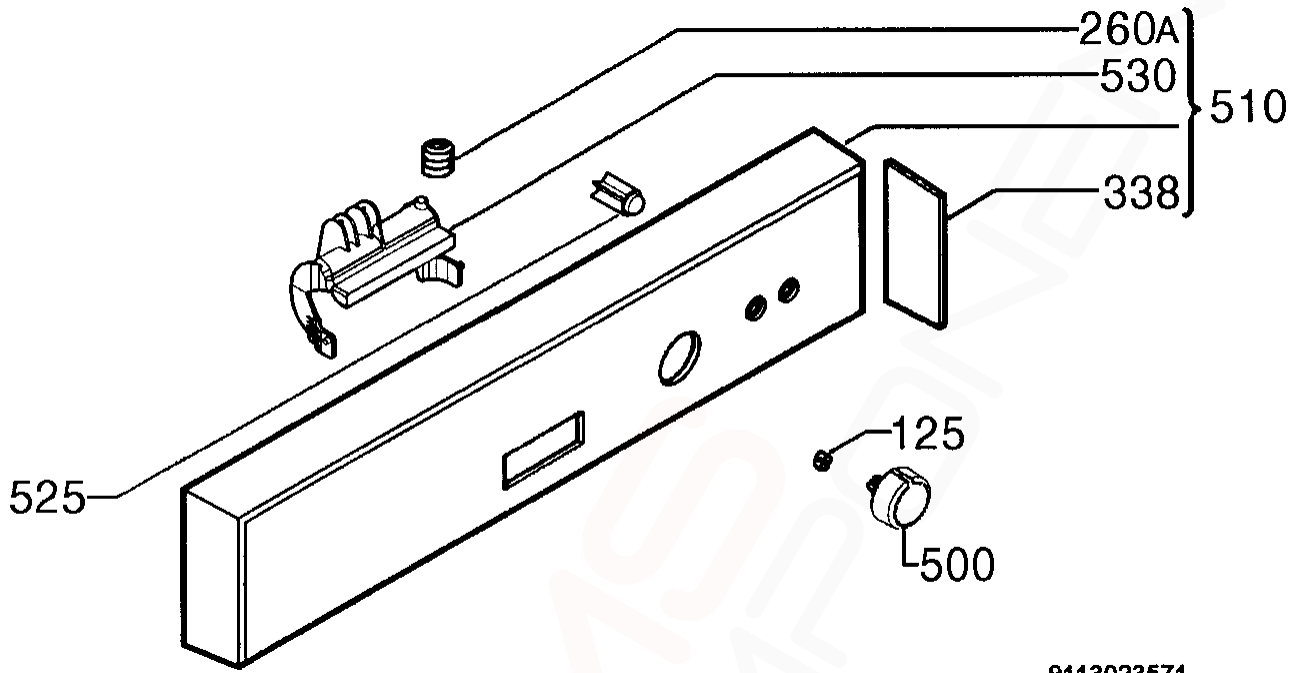


9113021581

ITEM	PART NUMBER	DESCRIPTION Ex. 5549	QTY
5	1528765-01/7	Regeneration Electric Valve, Water Softener, BITRON	1
5	1528875-01/4	Regeneration Electric Valve, Decalcifier, T&P	1
48	1528882-01/0	Salt Sensor, Decalcifier, T&P	1
48	1528766-00/7	Salt Sensor, Decalcifier, BITRON	1
117	50286081-00/0	Decalcifier Assembly	1
130	1521128-10/6	Gasket, Decalcifier	1
130A	1526505-00/1	Grommet, Decalcifier	4
521	1526411-00/2	Stopples, Decalcifier	1
527	1526449-10/1	Ring Nut, Decalcifier, Dark Grey	1
589	1520328-40/0	Funnel, Grey	1

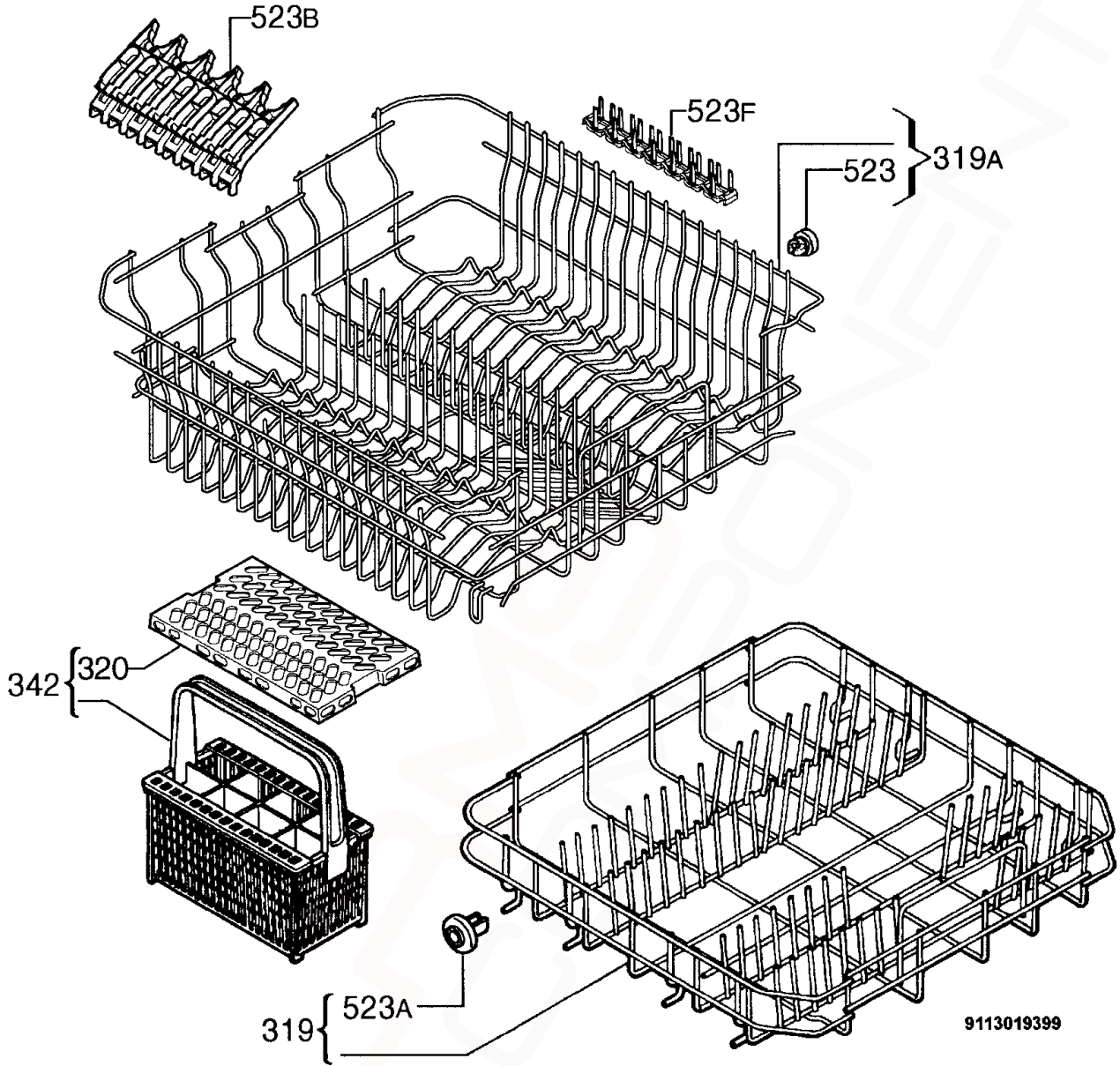
MODEL: ESF6125X

EX. VIEW DRAWING 5544
CONTROL PANEL ASSEMBLY

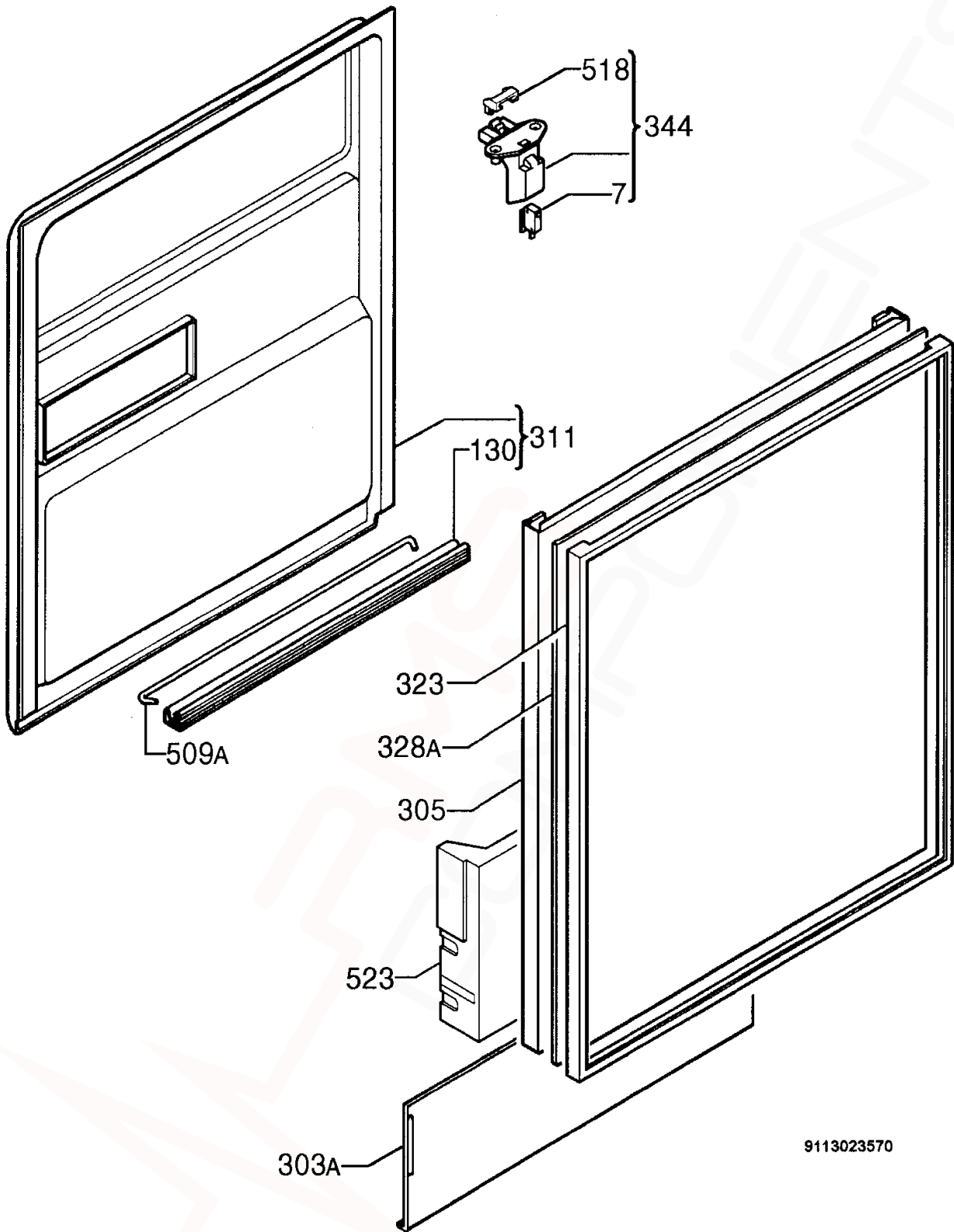


9113023571

ITEM	PART NUMBER	DESCRIPTION Ex. 5544	QTY
125	50681736-00/0	Locking Ring, Knob	1
260A	1525773-00/6	Spring, Handle, Latch	1
338	1528010-20/8	Side Plate, Control Panel, Grey	1
500	1528459-40/5	Knob, Inox	1
510	1528621-71/5	Control Panel, Silk Screened, Complete	1
525	1528449-40/6	Push Button, Inox	2
530	1528249-30/1	Handle, Inox	1



ITEM	PART NUMBER	DESCRIPTION Ex. 5543	QTY
319	50278170-00/1	Dishwasher Basket, Bottom, Grey	1
319A	1529657-61/9	Dishwasher Basket, Upper, Grey	1
320	1525019-10/3	Grate, Cutlery Basket, Grey	1
342	1525593-00/8	Cutlery Basket, Grey, Complete	1
523	50286967-00/0	Wheel Kit, 8 Pcs, Dark Grey, DIVA45/60	8
523A	50286965-00/4	Wheel Kit,8 Pcs, Dark Grey, DIVA45/60	8
523B	1527713-12/5	Support, Cup, Grey	2
523F	1528354-10/1	Support, Measure Cup, Silver	1



9113023570

ITEM	PART NUMBER	DESCRIPTION Ex. 5543	QTY
7	50253835-00/8	Micro Switch, Door	1
130	1527401-00/2	Door Gasket, Bottom, Black, L=550	1
303A	1521005-30/4	Plinth, Sliding Type, Grey	1
305	1520161-15/7	Door, White, LS60-590x588	1
311	50281303-00/3	Inner Door, Complete, DIVA/60	1
323	1520326-35/4	Door Frame, Aluminium	1
328A	1522141-30/6	Door Panel, Inox, DIVA/60	1
344	1526377-03/9	Latch, Bridging Plug, Complete	1
509A	1520419-14/2	Tie, Hinge	1
518	1526414-02/2	Bridging Plug	1
523	1527195-01/8	Stiffening, Door, 60-FLAT	1