

Electrolux

ELECTROLUX HOME PRODUCTS PTY LTD

ABN 51 004 762 341

Technical Publication N° DW335

Issue: 1

Date: 11/11

ELECTROLUX ELECTRONIC DISHWASHER

MODEL:

ESF6125X

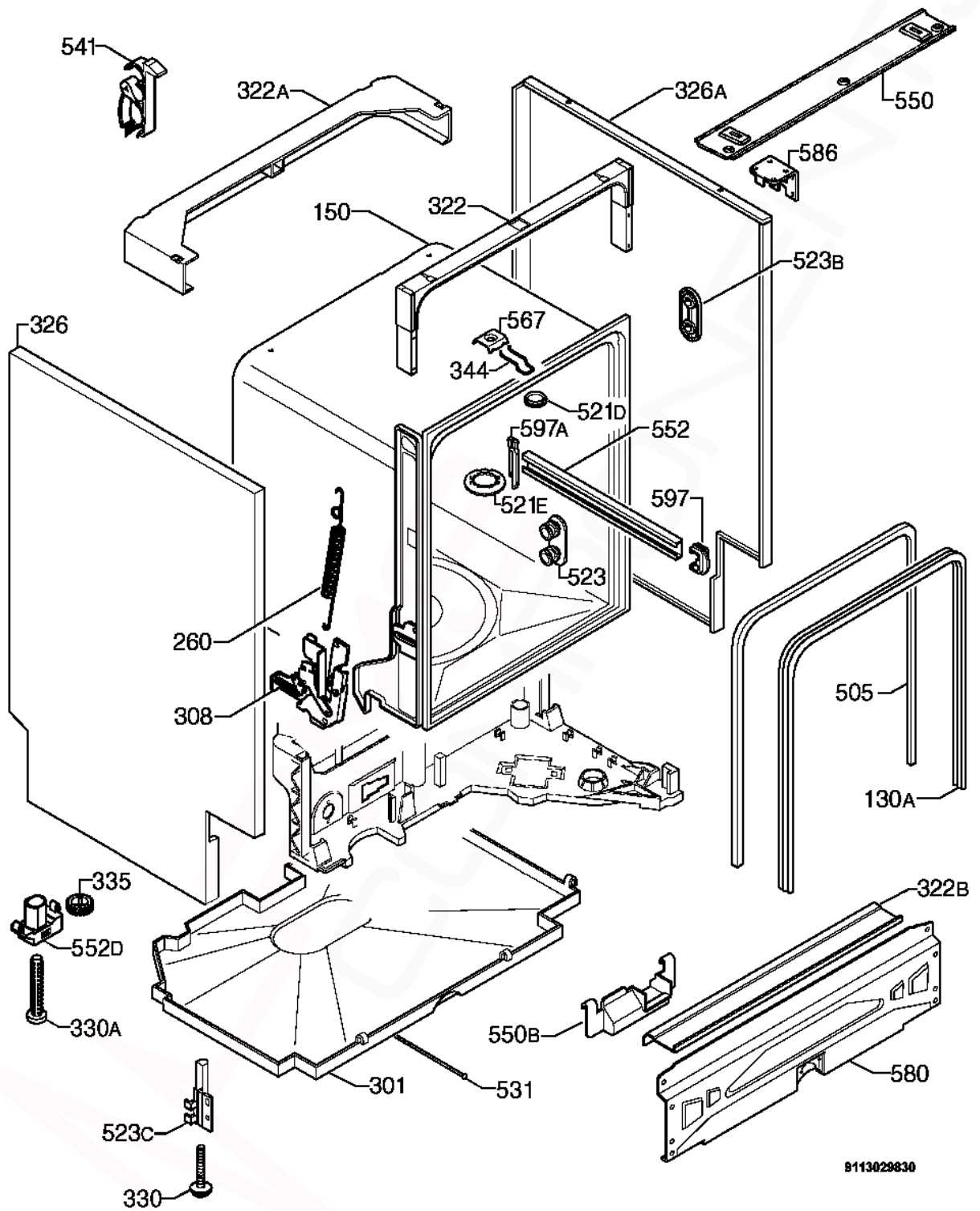
PNC 911949216 01

VARIANT CHANGE SUMMARY	
-------------------------------	--

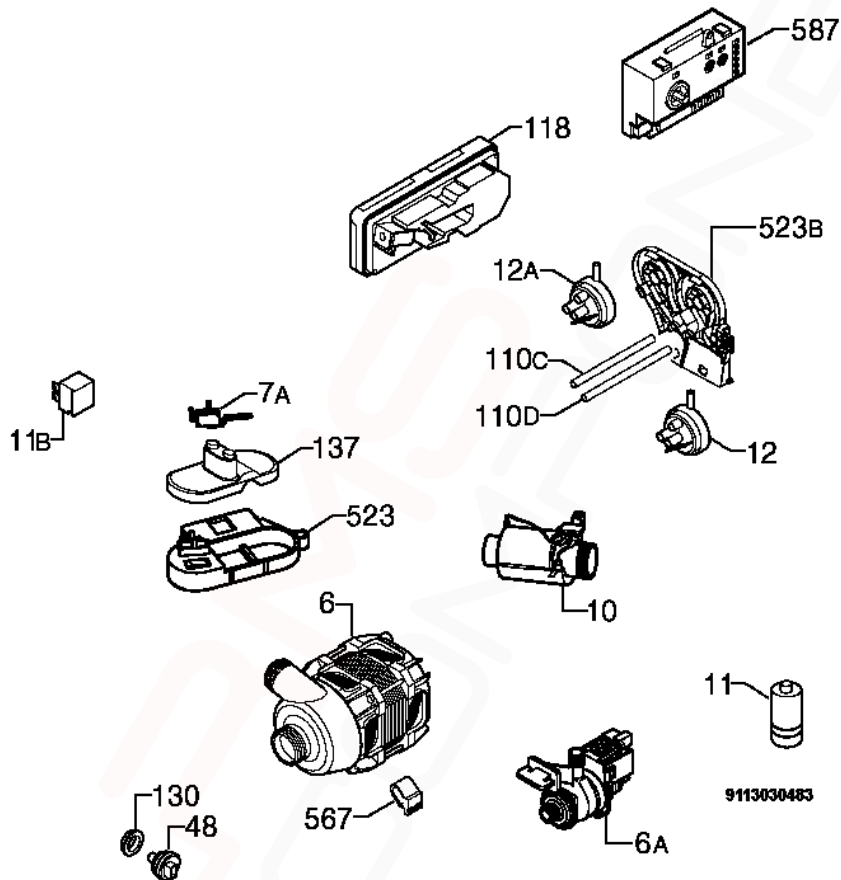
01	Modifications to Sealing Outer, Side Panel L/R, Rail Basket Upper, PCB, Harness, Wash Motor, Drain Pump, Pressure Switches & Tubes.
-----------	---

SAFR	
-------------	--

ESF6125X / 911949216 01	25/09/2008
-------------------------	------------

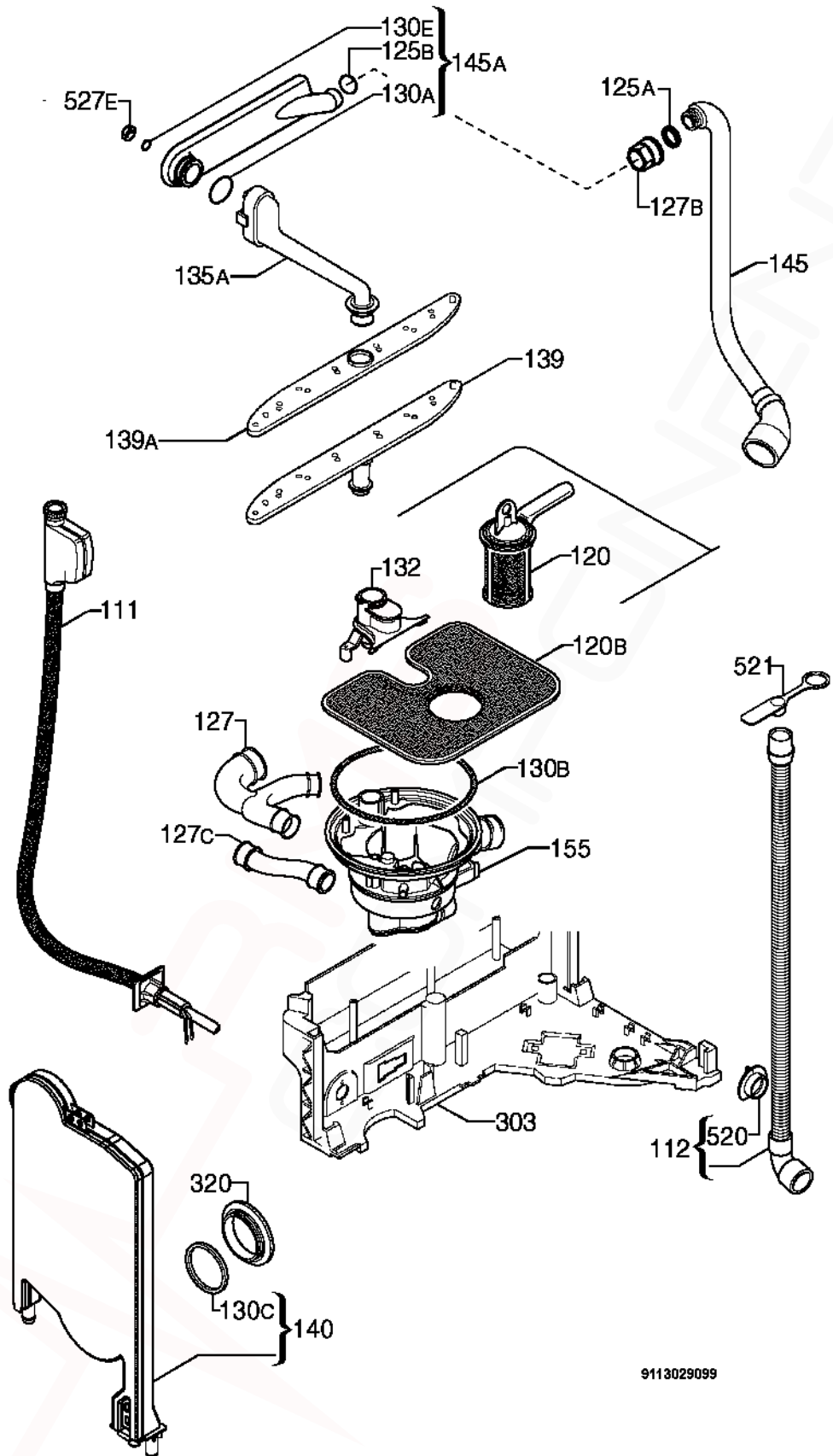


ITEM	PART N°	DESCRIPTION Ex. 9113029830	QTY
130A	1171265-00/0	Sealing Outer x 1730mm Long	1
150	N.P.A.	Tub	-
260	1526645-12/0	Spring Hinge	1
301	1526298-07/8	Bottom Cabinet	1
308	50286354-00/1	Kit Door Hinge Right-Left	1
322	1525280333	Crossbar Front Upper	1
322A	1170350-01/9	Crossbar Back Upper	1
322B	1527256-10/9	Crossbar Front Bottom	1
326	1526325277	Side Panel Left	1
326A	1526325376	Side Panel Right	1
330	1526617-02/0	Adjustable Foot Front	2
330A	1526994-00/7	Adjustable Foot Central	1
335	1527142-00/2	Cog Wheel	1
344	1522344-05/8	Latch	1
505	1526715-01/4	Trimming Tub White x 1710mm Long	1
521D	1526576-00/2	Hole Cover Latch	1
521E	1527051-10/4	Hole Cover Tub	1
523	50289087-00/4	Wheel Support Kit Dark Grey (4 Pieces)	1
523B	1521220-10/1	Stiffening Holder Roller	4
523C	1526315-03/9	Foot Support Front Left	1
523C	1526315-13/8	Foot Support Front Right	1
531	1170685000	Adjusting Screw Foot Central	1
541	N.P.A.	Hose Clamp	-
550	50290435002	Protection Front Upper	2
550B	1522345-03/0	Wiring Protection	1
552	1170542-00/3	Rail Basket Upper	2
552D	1523698-06/4	Guidance Rail Foot Central	1
567	1523236-03/0	Plaque Cj ^ã/ã D	1
580	1526314-06/5	Door Lock Front Bottom	1
586	1170209-00/9	Fixing Bracket Top	2
597	1520479-30/2	Basket Stop Front Dark Grey	2
597A	8996461234-05/7	Stopper Back Dark Grey	2
N.I.	50282092-00/1	Fixing Clip Stud (4 Pieces)	1



9113030483

ITEM	PART N°	DESCRIPTION	Ex. 9113030483	QTY
6	1111468-32/6	Washing Motor 2800RPM		1
6A	50293177-00/7	Drain Pump 50Hz		1
7A	1520393115	Microswitch Anti-overflow		1
10	50297618-00/6	Heater 230V/2000W Ø32mm		1
11	50287485-00/2	Running Capacitor Shank		1
11B	1526204-02/7	Interference Suppressor		1
12	1528189-02/8	Pressure Switch Level 65/45		1
12A	1528189-12/7	Pressure Switch Safety 123/98		1
48	1115912-06/3	Temperature Sensor NTC		1
110C	1170450-40/5	Tube Pressure Switch Safety x 515mm Long		1
110D	1170450-51/2	Tube Pressure Switch Level x 525mm Long		1
118	50285882-00/2	Kit Dispenser Detergent		1
130	1118535-03/6	Sealing Sleeve Temperature Sensor		1
137	1526761-01/8	Float		1
523	1520169-06/9	Support Float		1
523B	1170351-00/9	Mount Pressure Switch		1
567	1118709-01/1	Rubber Damper Circulation Pump		1
587	973911949216015	Configured Electronic EDW500		1
N.I.	50292692-00/6	Spring Hook Rinse Aid Cover		1
N.I.	1170862-31/0	Power Cable AUS/NZ		1
N.I.	1526491-01/2	Electric Cable Anti-overflow Gasket		1
N.I.	1528306085	Harness Complete		1

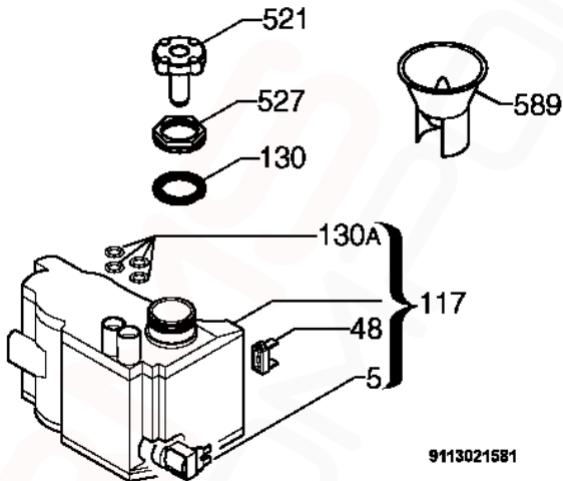


ITEM	PART N°	DESCRIPTION	Ex. 9113029099	QTY
111	1526443-04/7	Inlet Hose Water Block x 1500mm Long		1
112	1526492-01/0	Outlet Tube Complete x 1930mm Long		1
120	50297774-00/7	Drain Filter Complete		1
120B	1524360-00/3	Filter Inox		1
125A	50282650-00/6	O-Ring Manifold Outer		1
125B	50227938-00/3	O-Ring Manifold Inner		1
127	1118796-00/0	Pipe Union Y Ø32mm		1
127B	1523118-20/4	Pipe Union Manifold Dark Grey		1
127C	1526716-01/2	Pipe Union Decalcifier Sump		1
130A	1523119-01/2	Seal Channel Drainage		1
130B	8996461217-70/6	O-Ring Sump		1
130C	N.P.A.	Round Seal Container Cup		1
130E	1522802-00/6	Sealing Strip		1
132	1118495-91/8	Column Support Lower Spray Arm		1
135A	50281041-00/9	Channel Drainage Grey Complete		1
139	1526523-00/4	Lower Spray Arm Light Grey		1
139A	1526520-03/4	Spray Arm Upper Grey		1
140	1170481-00/4	Container Cup Small Electronic		1
145	1528059-00/7	Manifold Outer Ø32mm		1
145A	1172023-01/0	Manifold Horizontal Dark Grey		1
155	1527957037	Sump Pipe Union Complete		1
303	1526292-09/7	Basement		1
320	1526272-10/7	Grill Vapour Outlet Dark Grey		1
520	N.P.A.	Flange Discharge Pipe		1
521	N.P.A.	Stopper Drainage Hose		1
527E	50286080-00/2	Nut Water Distributor		1

If a Customer needs to extend their Drain Hose, order the following components:
0571400142 Hose Drain (2M length), 0182200002 Ferrule Hose Joiner (19mm)
and 2 x 0005001019 Clamp.

For extensions less than 2 metres, use ES5323K Kit Hose Flex Drain (1M)

NOTE: Total Drain Hose length must not exceed 4 metres.



9113021581

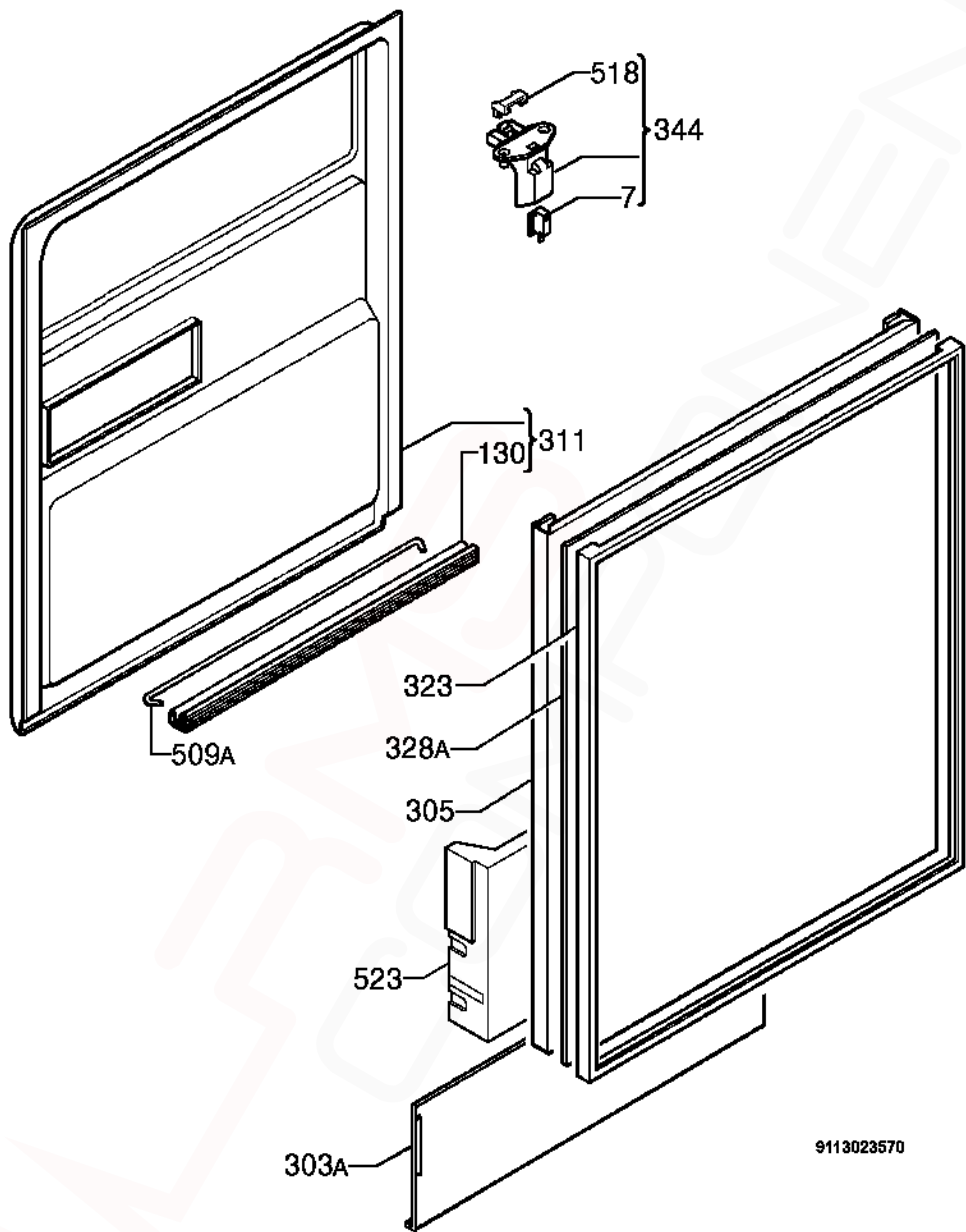
9113021581

MODEL: ESF6125X

PNC 911949216 01

**EX. VIEW 9113021581
REGENERATION TANK
ASSEMBLY**

ITEM	PART N°	DESCRIPTION	Ex. 9113021581	QTY
5	1528765-01/7	Regeneration Electric Valve Water Softener		1
48	1528882-01/0	Salt Sensor Decalcifier		1
117	50286081-00/0	Decalcifier		1
130	1521128-10/6	Gasket Decalcifier		1
130A	1526505-00/1	Grommet Decalcifier		1
521	1526411-00/2	Stoppie Decalcifier		1
527	1526449-10/1	Ring Nut Decalcifier Dark Grey		1
589	1520328-40/0	Funnel Dishwasher Salt Grey		1

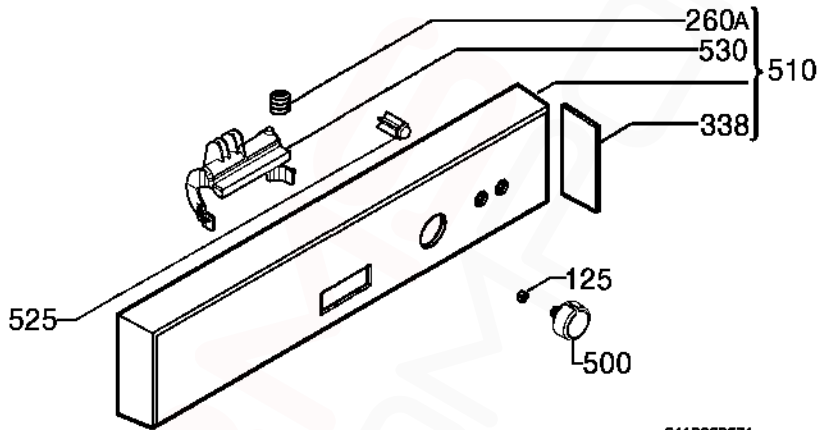


9113023570

9113023570

MODEL: ESF6125X**PNC 911949216 01****EX. VIEW 9113023570
DOOR COMPLETE ASSEMBLY**

ITEM	PART N°	DESCRIPTION	Ex. 9113023570	QTY
7	50287927-00/3	Microswitch Door		1
130	1527401-00/2	Door Gasket Bottom Black x 550mm Long		1
303A	1521005-30/4	Plinth Sliding Type Grey		1
305	1520161-15/7	Door White		1
311	50281303-00/3	Inner Door Complete		1
323	1520326503	Door Frame Inox		1
328A	1522141-30/6	Door Panel Inox		1
344	1526377-08/8	Latch Bridging Plug Complete		1
509A	1520419-14/2	Tie Hinge		1
518	1526414-02/2	Bridge Door Lock		1
523	1529409003	Stiffening Door		1

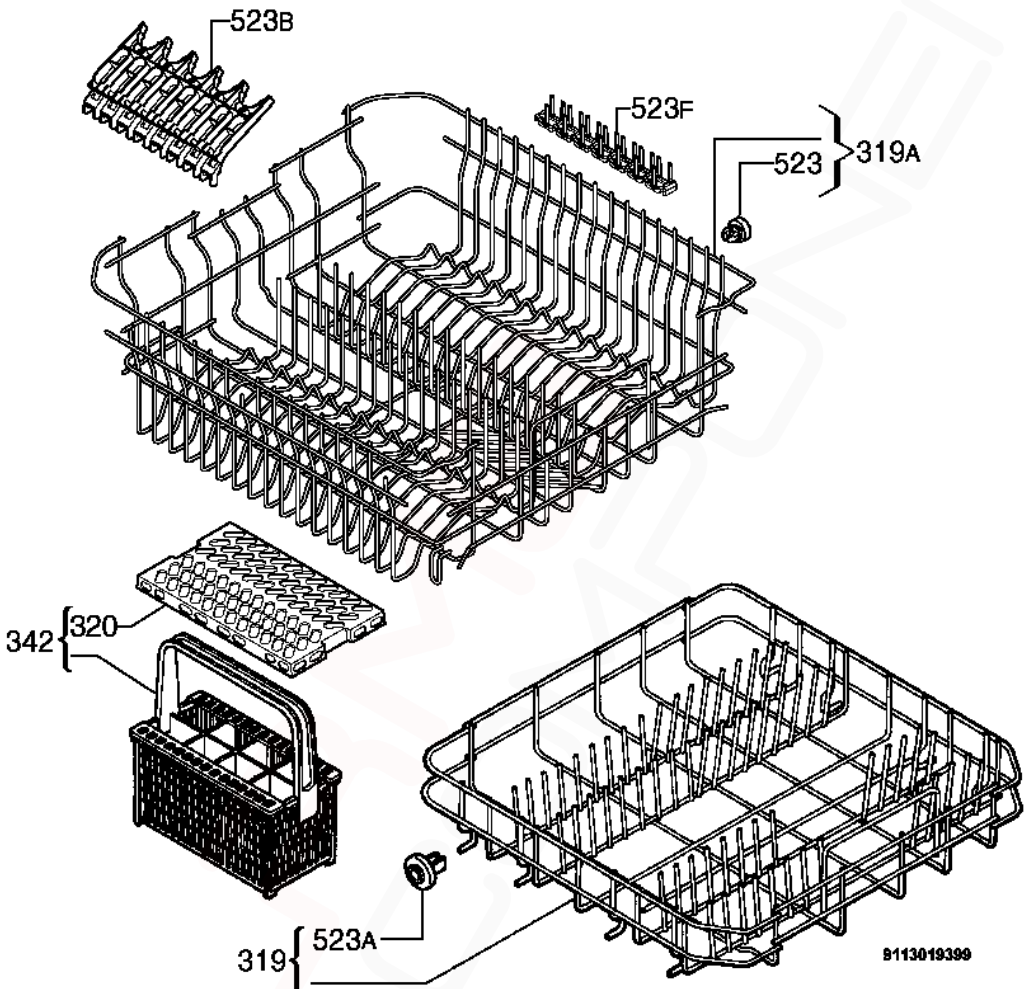


9113023571

9113023571

MODEL: ESF6125X**PNC 911949216 01****EX. VIEW 9113023571
CONTROL PANEL ASSEMBLY**

ITEM	PART N°	DESCRIPTION	Ex. 9113023571	QTY
125	1529322008	Knob Spring		1
260A	1525773-00/6	Spring Handle Latch		1
338	1528010-20/8	Side Plate Control Panel Grey		1
500	1529361303	Knob Inox		1
510	1528621-71/5	Control Panel Silkscreened Complete		4
525	1528449-40/6	Push Button Inox		1
530	1528249-30/1	Handle Inox		1



8113019399

9113019399

MODEL: ESF6125X**PNC 911949216 01****EX. VIEW 9113019399
BASKET ASSEMBLY**

ITEM	PART N°	DESCRIPTION	Ex. 9113019399	QTY
319	50278170-00/1	Dishwasher Basket Bottom Grey		1
319A	1529657-61/9	Dishwasher Basket Upper Grey		1
320	1525019-10/3	Grate Cutlery Basket Grey		1
342	1525593-00/8	Cutlery Basket Light Grey Complete		1
523	50286967-00/0	Wheel Kit Dark Grey (8 Pieces)		1
523A	50286965-00/4	Wheel Kit Dark Grey (8 Pieces)		1
523B	1527713-13/3	Holder Cup Grey		1