



**ELECTROLUX HOME PRODUCTS PTY LTD**

ABN 51 004 762 341

PRINT POST APPROVED PP565001/00099

Technical Publication N° DW105 Book WD 6

Issue: 1

Date: 8/03

**WEB SITE ADDRESS: [www.partnship.com.au](http://www.partnship.com.au)**

*ELECTROLUX*

***DISHWASHERS***

SECTION	PAGE N°
OUTER PANEL & LINER ASSEMBLY	2 & 3
ELECTRICAL ASSEMBLY	4 & 5
WATER CIRCUIT ASSEMBLY	6 & 7
WATER SOFTENER ASSEMBLY	8 & 9
DOOR PANEL & WORK TOP ASSEMBLY	10 & 11
BASKET ASSEMBLY	12 & 13
TIMER CHART	14
WIRING DIAGRAM	15
CIRCUIT DIAGRAM	16

*RELEASE DATE:- 10/02*

***MODELS:***

**ESF6100W**

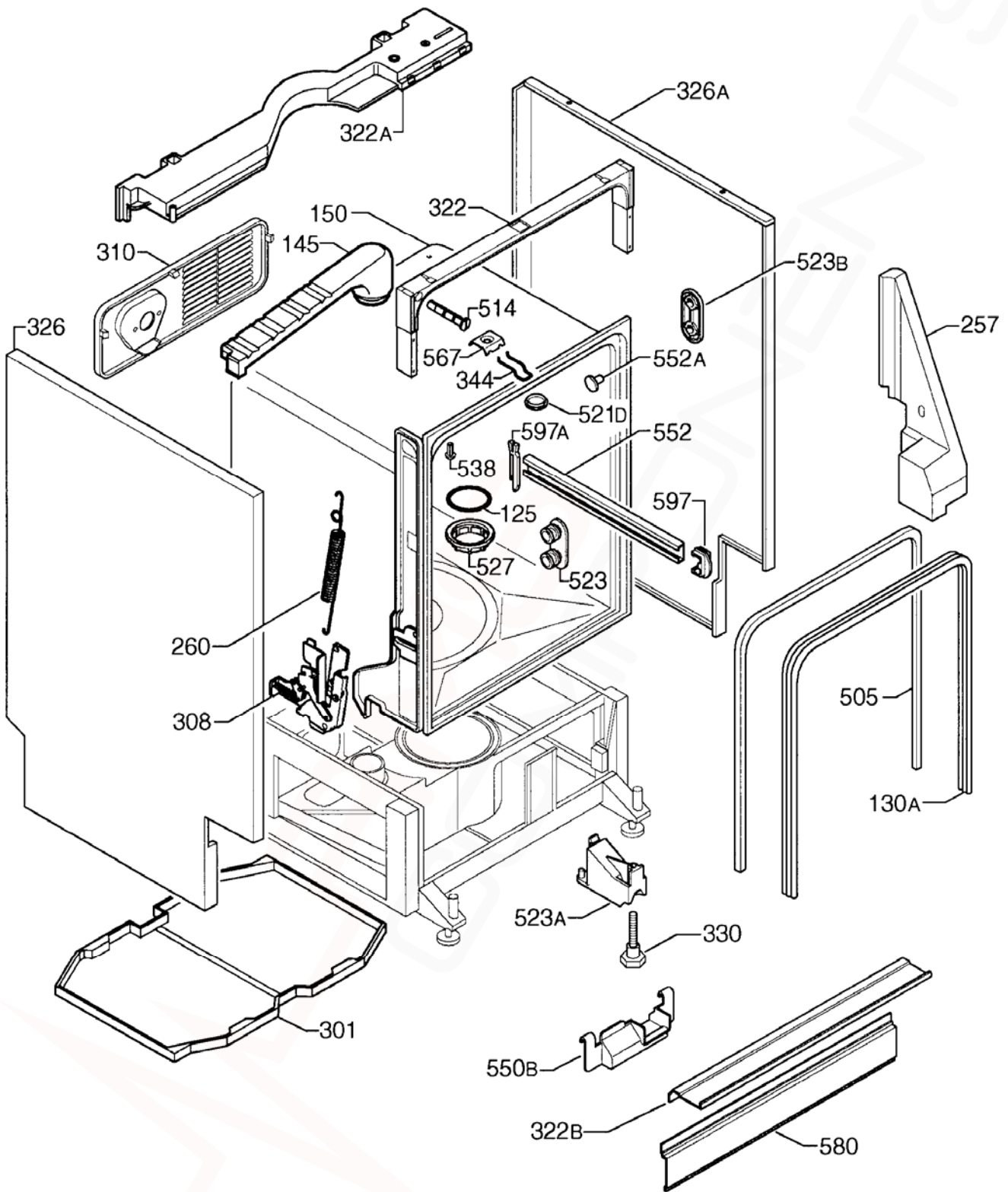
PNC 911 882 021

**ESF6100X**

PNC 911 882 022

MODELS: ESF6100W  
ESF6100X

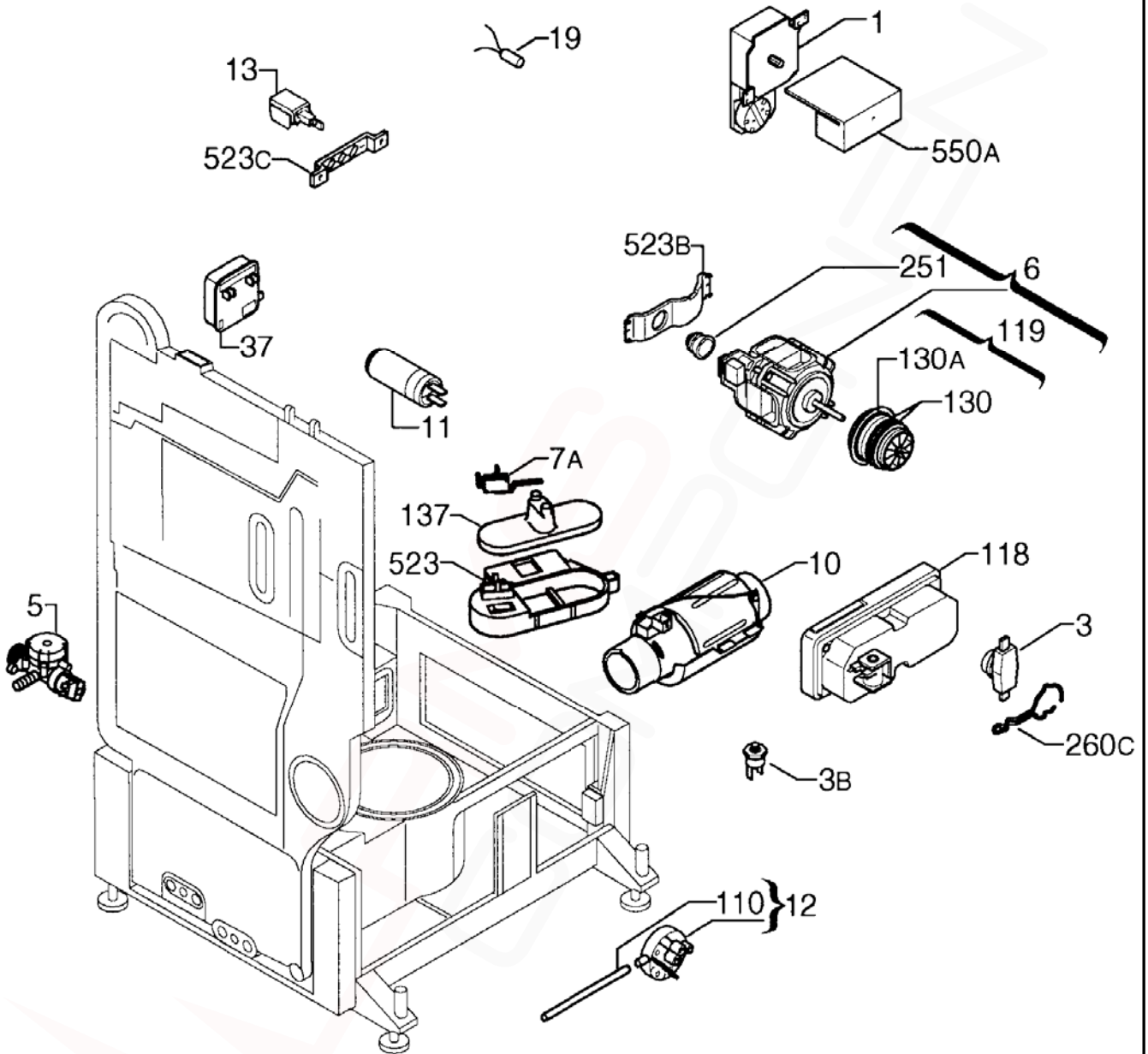
EX. VIEW DRAWING 3888  
OUTER PANEL & LINER  
ASSEMBLY



ITEM	PART N°	DESCRIPTION	Ex. 3888	QTY
125	<b>50249145-00/9</b>	"O" Ring, Ferrule, Manifold		1
130A	<b>1524445-01/0</b>	Sealing Sleeve, Outer		1
145	<b>1523697-02/5</b>	Manifold, Steam		1
150	<b>N.P.N.</b>	Liner Assembly		1
257	<b>1523479-00/2</b>	Counterweight (Bob)		1
260	<b>1524312-10/3</b>	Spring, Hinge, Normal		2
301	<b>1523673-01/8</b>	Tray, Drip		1
308	<b>50252604-00/9</b>	Hinge Kit, Door (LH/RH. )		2
310	<b>1526379-00/1</b>	Flap, Support, Solenoid		1
322	<b>1525280-16/8</b>	Crossbar, Front, Upper		1
322A	<b>1523519-15/3</b>	Crossbar, Back, Upper,		1
322B	<b>1523512-04/2</b>	Crossbar, Front, Bottom		1
326	<b>1526790-00/9</b>	Panel, Side, LH. (White)		1
326A	<b>1526790-10/8</b>	Panel, Side, RH. (White)		1
330	<b>1522017-13/4</b>	Foot		4
344	<b>1522344-05/8</b>	Latch		1
505	<b>1522337-02/9</b>	Trimming, Tub/Cabinet		1
514	<b>1522520-03/8</b>	Socket, Adjustable		1
521D	<b>1526576-00/2</b>	Cover, Latch Hole		1
523	<b>1522029-12/1</b>	Bracket and Roller Assembly (Grey)		4
523A	<b>1522271-04/6</b>	Carrier, Leg		2
523B	<b>1521220-03/6</b>	Bracket, Re-Enforcement, Roller		4
527	<b>1523520-10/2</b>	Ferrule (Grey)		1
538	<b>1522335-01/5</b>	Piece, Distance, Crosspiece, Rear		1
550B	<b>1522345-03/0</b>	Protection, Wiring		1
552	<b>1520512-05/2</b>	Rail, Basket, Upper		2
552A	<b>1525272-21/5</b>	Guidance, Inner Door (Grey)		2
567	<b>1523236-02/2</b>	Clamp, Door Latch (Plaque)		1
580	<b>1523513-04/0</b>	Panel, Front, Bottom		1
597	<b>1520479-10/4</b>	Cap, Rail End (Grey)		2
597A	<b>1525376-20/6</b>	Stop, Rail End (Grey)		2

MODELS: ESF6100W  
ESF6100X

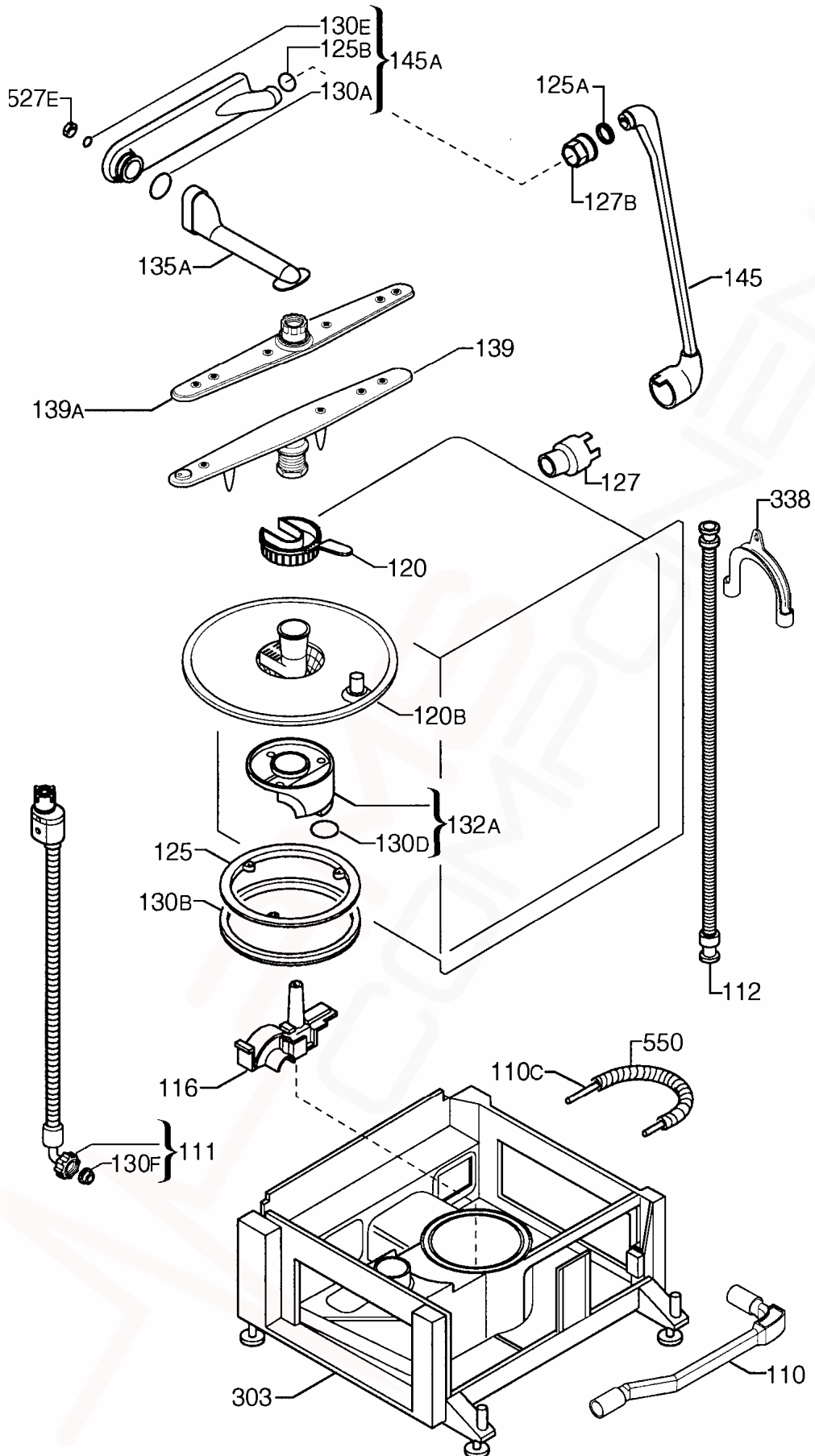
EX. VIEW DRAWING 3889  
ELECTRICAL ASSEMBLY



ITEM	PART N°	DESCRIPTION	Ex. 3889	QTY
001	<b>1525008-11/4</b>	Timer		1
003	<b>1524799-10/1</b>	Regulator, Temperature (42°C)		1
003B	<b>1523601-11/8</b>	Regulator, Temperature (59°C)		1
005	<b>1520233-00/6</b>	Valve, Anti-Overflow		1
006	<b>50267490-00/6</b>	Pump Assy. Kit (Inc. Items 119, 130, 130A and 251)		1
007A	<b>1520393115</b>	Switch, Micro, Anti-Overflow		1
010	<b>1115773-00/2</b>	Element, Heater (230V - 2100W)		1
011	<b>1522966-10/8</b>	Capacitor (4 µF)		1
012	<b>1529900-60/5</b>	Switch, Pressure (Inc. Item 110)		1
013	<b>1520646025</b>	Switch, On/Off		1
019	<b>50226589-00/5</b>	Lamp, Indicator		1
037	<b>1525956-00/7</b>	Box, Junction, Integrated		1
110	<b>0055 250 455</b>	Tube, Pressure Switch		1
118	<b>1525531-30/5</b>	Dispenser, Detergent (Grey)		1
119	<b>50267509-00/3</b>	Impellers Assembly		1
130	<b>1520292002</b>	Gasket, Pump, Front, 50/39 mm. Dia.		1
130A	<b>1520292101</b>	Gasket, Pump, Front, 63/09 mm. Dia.		1
137	<b>1520170-03/4</b>	Float		1
251	<b>1522489-02/8</b>	Buffer, Back, Motor		1
260C	<b>1522220-00/1</b>	Spring, Fixing, Temperature Regulator		1
523	<b>1520169051</b>	Housing, Float		1
523B	<b>1523700-00/1</b>	Bracket, Support, Motor		1
523C	<b>1520670-00/9</b>	Bracket, Support, Push Button		1
550A	<b>1525149-00/9</b>	Shield, Timer		1
N.I.	<b>1524828-00/9</b>	Stand, Harness		1
N.I.	<b>1524890-04/1</b>	Wiring, Upper		1

MODELS: ESF6100W  
ESF6100X

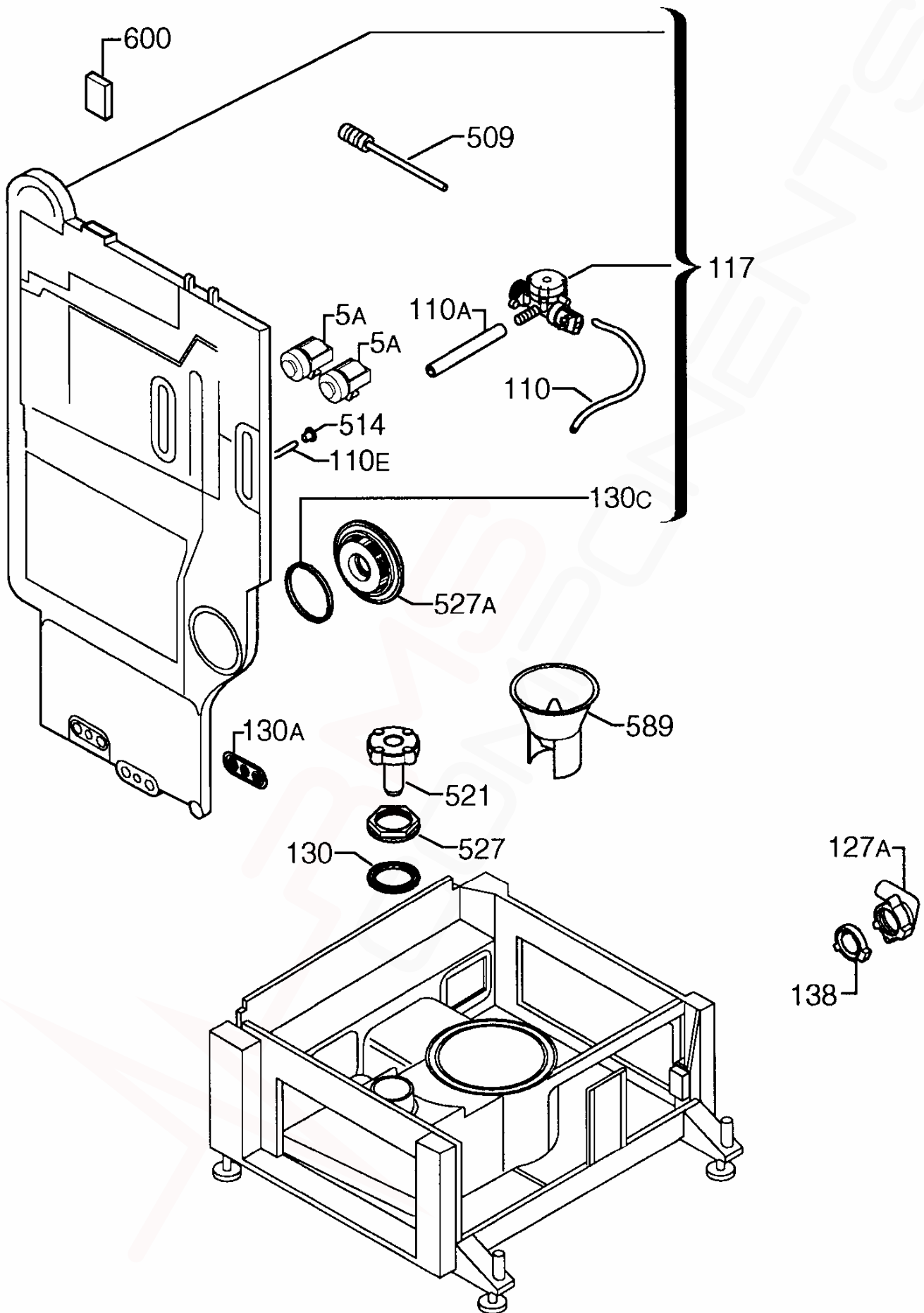
EX. VIEW DRAWING 3890  
WATER CIRCUIT ASSEMBLY



ITEM	PART N°	DESCRIPTION	Ex. 3890	QTY
110	<b>1529849-31/5</b>	Hose, Connecting, Stand		1
110C	<b>1520464-31/2</b>	Tube, Water Balance		1
111	<b>1522221-12/4</b>	Hose, Inlet, Safety (1500 mm)		1
112	<b>0571 400 142</b>	Hose, Drain		1
116	<b>1522410-20/6</b>	Scroll, Wash		1
120	<b>1524505-10/2</b>	Filter, Drain Pump (Grey)		1
120B	<b>1529790-92/3</b>	Filter, Column (Grey)		1
125	<b>1522342-02/9</b>	Retainer, Sump		1
125A	<b>50248856-00/2</b>	"O"-Ring, Manifold, Outer		1
125B	<b>50227938-00/3</b>	"O"-Ring, Manifold, Inner		1
127	<b>1524422-03/5</b>	Connector, Water Sump to Heater		1
127B	<b>1523118-10/5</b>	Connector, Manifold, (Grey)		1
130A	<b>1523119-01/2</b>	Seal, Channel, Drainage		1
130B	<b>1522414-02/6</b>	Gasket, Sump		1
130D	<b>1520772003</b>	Gasket, Column		1
130E	<b>1522802-00/6</b>	Sealing Strip		1
130F	<b>1240151009</b>	Gasket, Hose		1
132A	<b>1529841-80/9</b>	Column and Gasket Assembly		1
135A	<b>1524902-40/8</b>	Channel, Drainage (Grey)		1
139	<b>1524786-30/6</b>	Arm, Bottom Spray (Grey)		1
139A	<b>1524744-10/7</b>	Arm, Upper Spray (Grey)		1
145	<b>1524421-02/9</b>	Manifold, Heater Element		1
145A	<b>1529844-40/7</b>	Manifold Assy., Horizontal (Grey)		1
303	<b>N.P.N.</b>	Stand Assembly		1
338	<b>1242916-00/3</b>	Hook, Drain Hose		1
527E	<b>50239993-00/4</b>	Nut, Water Distributor		1
550	<b>1524982-00/4</b>	Tube, Protection, Water Balance Tube		1

MODELS: ESF6100W  
ESF6100X

EX. VIEW DRAWING 3891  
WATER SOFTENER ASSEMBLY

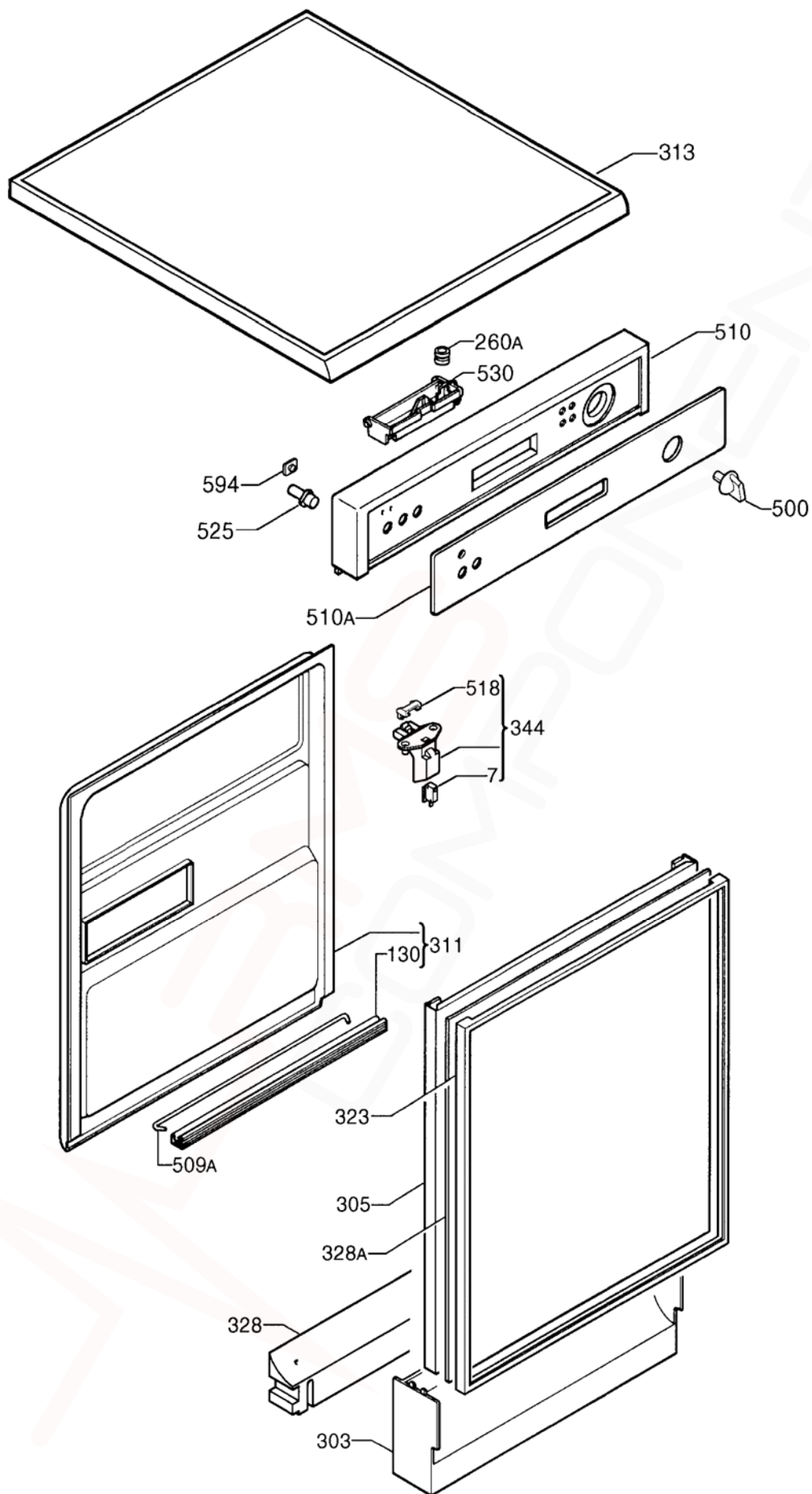




ITEM	PART N°	DESCRIPTION	Ex. 3891	QTY
005A	<b>1529746-70/1</b>	Valve, Electric		2
110	<b>1529902-10/6</b>	Hose, Valve		1
110A	<b>1529902-20/5</b>	Hose		1
110E	<b>1520465103</b>	Tube, Regeneration Tank Drain (250 mm)		1
117	<b>1524624-03/6</b>	Decalcifier, IWMS		1
127A	<b>1522340-03/1</b>	Connector, Outlet Valve		1
130	<b>1525274-00/5</b>	Seal, Decalcifier		1
130A	<b>1522338-00/1</b>	Gasket, Regen. Tank		1
130C	<b>50659231-00/0</b>	Seal, Round		1
138	<b>1522418-03/5</b>	Membrane, Outlet Valve		1
509	<b>1529902-50/2</b>	Shaft, Adjustor		1
514	<b>2239010050</b>	Bushing		1
521	<b>1520251-60/2</b>	Bung, Decalcifier, (Grey)		1
527	<b>1520250-10/9</b>	Ferrule, Decalcifier, (Grey)		1
527A	<b>1524050-40/6</b>	Ferrule, Active Dry (Grey)		1
589	<b>1520328-40/0</b>	Funnel, (Grey)		1
600	<b>1526856-00/8</b>	Sponge		1

MODELS: ESF6100W  
ESF6100X

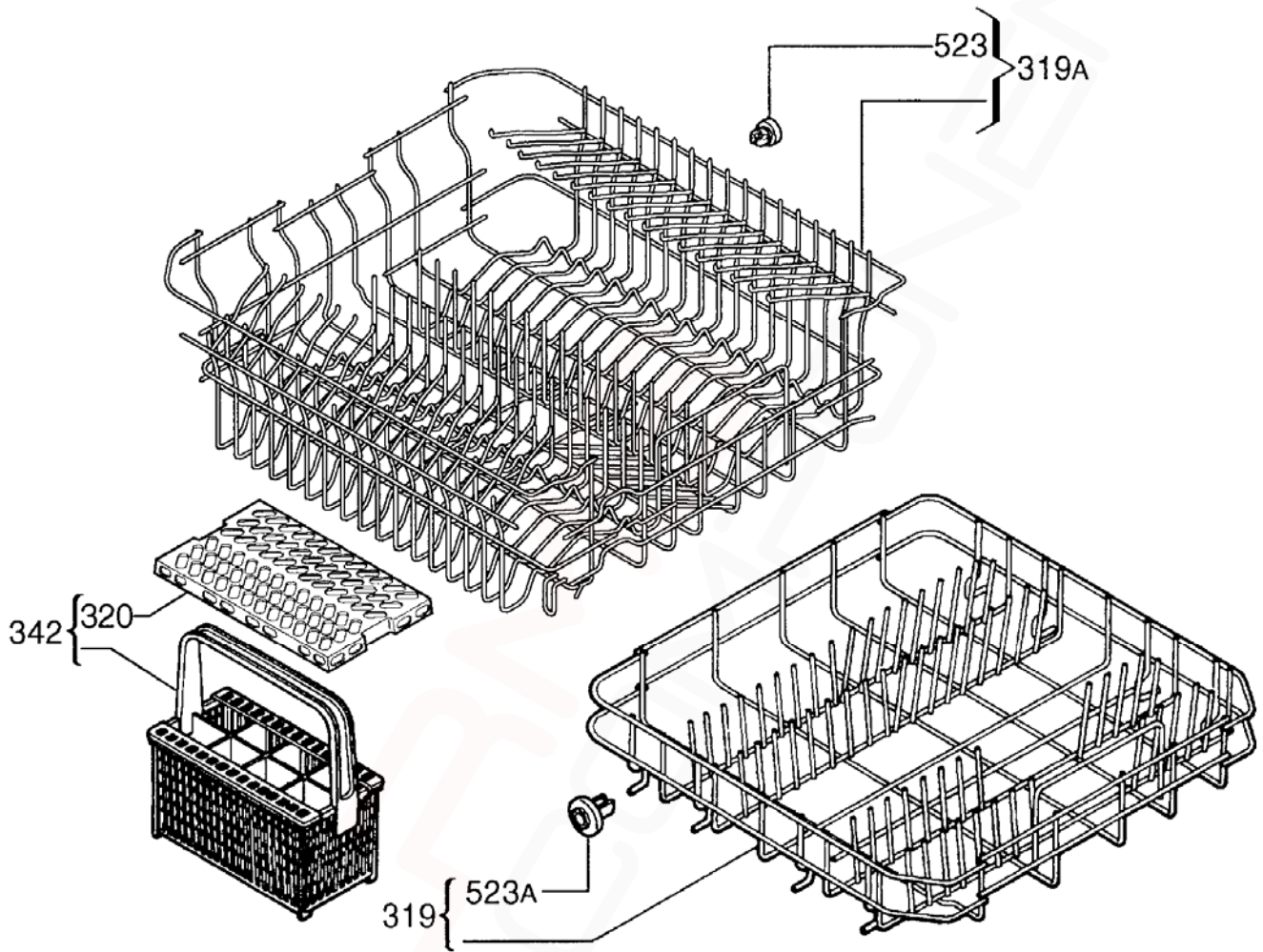
EX. VIEW DRAWING 3892  
DOOR PANEL and  
WORK TOP ASSEMBLY



			ESF6100	
ITEM	PART N°	DESCRIPTION Ex. 3892	W	X
007	<b>50253835-00/8</b>	Switch, Micro, Door	1	1
130	<b>1520425008</b>	Gasket, Door Bottom,	1	1
260A	<b>1520446-00/4</b>	Spring, Door Latch	1	1
303	<b>1522769-04/9</b>	Panel, Kick Plate (White)	1	
	<b>1522769-33/8</b>	Panel, Kick Plate (Black)		1
305	<b>1520161-12/4</b>	Panel, Door (White)	1	1
311	<b>50267908-00/7</b>	Panel Assy., Door, Inner	1	1
313	<b>1522649-31/6</b>	Table Top	1	
	<b>1523611-71/1</b>	Table Top		1
323	<b>1520334-53/1</b>	Frame, Door (White)	1	
	<b>1520334-70/5</b>	Frame, Door (Black)		1
328	<b>1523188-00/9</b>	Panel, Blind, Insulator, Base	1	1
328A	<b>1522141-10/8</b>	Panel, Door, Inox		1
344	<b>50272150-00/9</b>	Latch Kit, Bridging Plug	1	1
500	<b>1526286-40/4</b>	Knob (White)	1	
	<b>1526286-50/3</b>	Knob, Inox		1
509A	<b>1520419-14/2</b>	Tie, Hinge	1	1
510	<b>1522605-00/3</b>	Panel, Front (White)	1	1
510A	<b>1526722-00/2</b>	Plate, Programme (White)	1	
	<b>1526722-10/1</b>	Plate, Programme (Inox)		1
518	<b>1526414-00/6</b>	Plug, Bridging	1	1
525	<b>1520127-11/7</b>	Button, Push (White)	2	
	<b>1521905-11/5</b>	Button, Push (Black)		1
	<b>1521905-20/6</b>	Button, Push (Grey)		1
530	<b>1522298-30/4</b>	Handle (Grey)	1	1
594	<b>50234668-00/7</b>	Glass, Indicating, Control Lamp		1

MODELS: ESF6100W  
ESF6100X

EX. VIEW DRAWING 3893  
BASKET ASSEMBLY



ITEM	PART N°	DESCRIPTION	Ex. 3893	QTY
319	<b>1529809-13/7</b>	Basket, Bottom (Grey)		1
319A	<b>1529812-82/6</b>	Basket, Upper (Grey)		1
320	<b>1525019-10/3</b>	Grate, Cutlery Basket (Grey)		1
342	<b>1525593-00/8</b>	Basket Assy., Cutlery (Grey)		1
523	<b>50269921-00/8</b>	Roller Assembly, Upper Basket (Grey)		8
523A	<b>50269757-00/6</b>	Roller Assembly, Lower Basket (Grey)		8