



Electrolux

ELECTROLUX HOME PRODUCTS PTY LTD

ABN 51 004 762 341

Technical Publication N° RH1042.docx

Issue: 1

Date: 1/19

Electrolux

MODEL / PNC

ERI842DSD

956004018 00

ERI522DSD

956004017 00

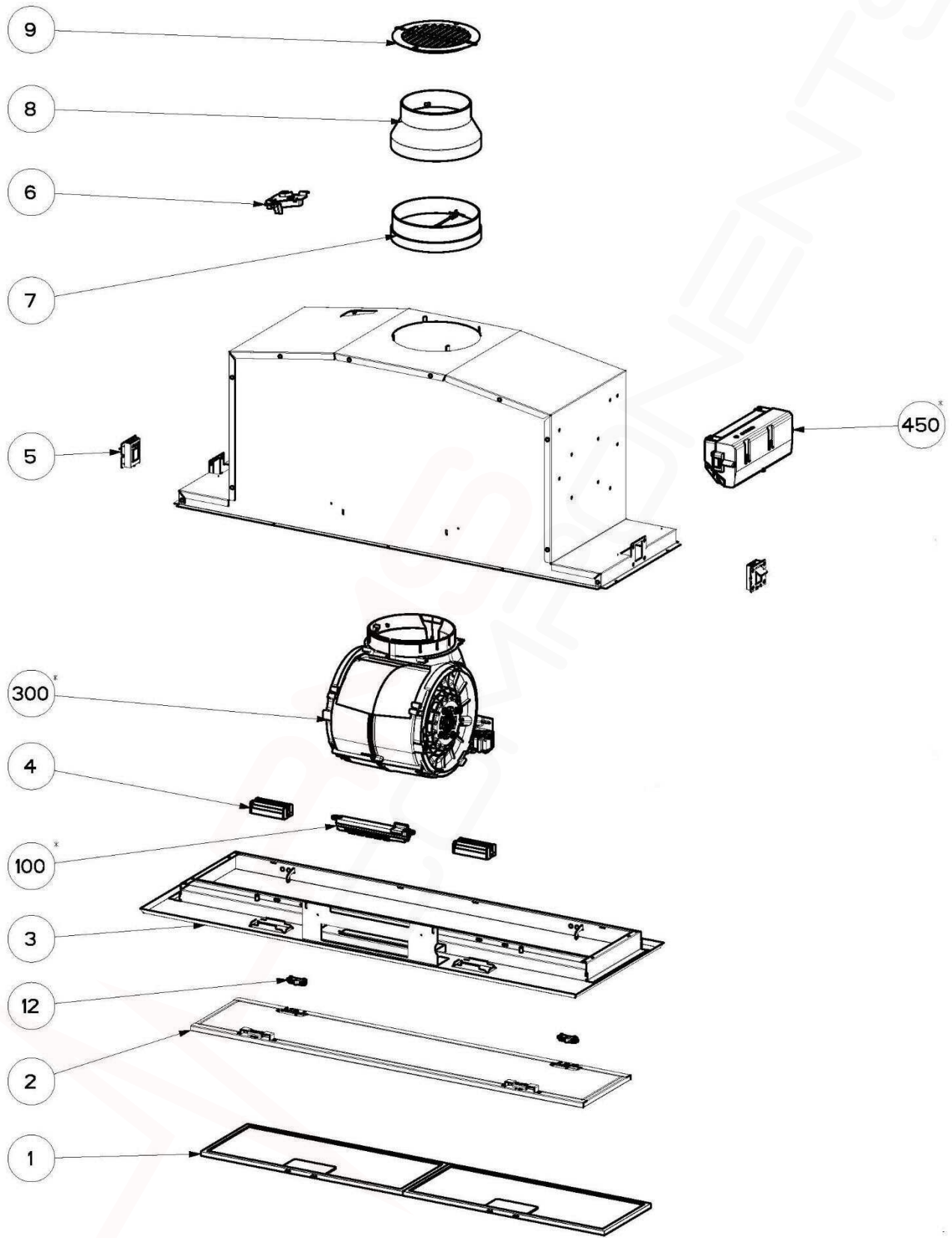
MAINTENANCE LEVEL CHANGE SUMMARY

| ML | Description | Release Date |
|----|---------------|--------------|
| 0 | Initial Issue | 02/2019 |

MODEL NUMBER IDENTIFICATION

| FREE STANDING COOKERS | | | | | | | | | | |
|--|--|---|--|--|---|--|---|---|---|---|
| W Brand | B Construction | E Oven Fuel Type | S Added Features | W Width | H Hob Type | S Specification Level | W Colour | A Series | R Side Opening Door Type | G Gas Type |
| W = Westinghouse C = Chef E = Electrolux Z = Zanussi S = Simpson | E = Elevated Cooker F = Front Control Freestanding Cooker L = Rear Control Freestanding Cooker | E = Electric G = Gas | Leave blank for all except the below: S = Side Opening Door P = Pyro | 0 = 60 - 64cm 6 = 60 - 66cm 7 = 70 - 78cm 8 = 80 - 88cm 9 = 90 - 96cm 1 = 100cm and above | IF FUEL TYPE = G 0 = No wok 1 = Wok IF FUEL TYPE = E 2 = Radiant Coil 3 = Solid 4 = Ceramic 5 = Induction 6 = Dual fuel | Even = 0/0, Odd = Sep Grill 0 = Lowest Spec 1 2 3 4 5 6 7 8 9 = Highest Spec | W = White S = Stainless Steel B = Black | A = SAFR B = 1st series change C = 2nd series change etc | L = Left Hand Opening R = Right Hand Opening | LP = Liquefied Petroleum NG = Natural Gas |
| BUILT-IN OVENS | | | | | | | | | | |
| W Brand | B Construction | E Oven Fuel Type | S Added Features | W Width | C Cavity Type | S Specification Level | W Colour | A Series | G Gas Type | R Side Opening Door Type |
| W = Westinghouse C = Chef E = Electrolux Z = Zanussi S = Simpson | V = Built-in oven | E = Electric G = Gas | Leave blank for all except the below: S = Side Opening Door M = Microwave P = Pyro | 3 = 30cm - 36cm 4 = 40cm - 46cm 5 = 50cm - 56cm 6 = 60cm - 66cm 7 = 70cm - 76cm 8 = 80cm - 86cm 9 = 90cm - 96cm 1 = 100cm - 110cm 2 = 120 cm + | 1 = Single 2 = Duo 3 = Double 4 = Combo Oven 5 = Sep grill und/bench 6 = Sep grill wall oven 7 = Compact | 0 = Lowest Spec 1 2 3 4 5 6 7 8 9 = Highest Spec | W = White S = Stainless Steel B = Black | A = SAFR B = 1st series change C = 2nd series change etc | LP = Liquefied Petroleum NG = Natural Gas | L = Left Hand Opening R = Right Hand Opening |
| BUILT-IN HOBS | | | | | | | | | | |
| W Brand | B Construction | H Hob Type | W Width | N No. Burners/Zones | S Specification Level | W Colour | A Series | | | |
| W = Westinghouse C = Chef E = Electrolux Z = Zanussi S = Simpson | H = Hob | IF ELECTRIC HOB: S = Solid C = Ceramic I = Induction R = Radiant Coil M = Mix IF GAS HOB: G = Gas D = Dual Fuel | 3 = 36cm or below 4 = 40cm - 46cm 5 = 50cm - 56cm 6 = 60cm - 66cm 7 = 70cm - 76cm 8 = 80cm - 86cm 9 = 90cm - 96cm 1 = 100cm - 110cm 2 = 120 cm and above | 1 2 3 4 5 6 7 8 9 | 0 = Lowest Spec 1 2 3 4 5 6 7 8 9 = Highest Spec | W = White S = Stainless Steel B = Black | A = SAFR B = 1st series change C = 2nd series change etc | | | |

MODEL: ERI842DSD, ERI522DSD



| ITEM | PART N° | DESCRIPTION | ERI 842 | ERI 522 |
|-------------|---------------------|---|--------------------|--------------------|
| 1 | 1330304806 | CASSETTE FILTER 456X159.5X8 | | 1 |
| | 1330304676 | CASSETTE FILTER 397.5X159.5X8 | 2 | |
| 2 | 133.0570.399 | PERIM.PANEL BK 520 S.ELX | | 1 |
| | 1330570392 | PERM PAN. ASS.BK ST 860 N/WELD.S.ELX | 1 | |
| 3 | 1330570397 | KIT ASS.FRAME .BK ST 520 KS-O LV68 | | 1 |
| | 1330570390 | KIT ASS.FRAME BK ST 860 KS-O LV68 | 1 | |
| 4 | 1330478994 | SPOTLIGHT LED VELO ECO L68 12V 2W 3000K | 1 | 1 |
| 5 | 1330570385 | SUPPORT COOKER | 2 | 2 |
| 6 | 1330252290 | SUPPLY CABLE RETAINER | 1 | 1 |
| 7 | 1330056646 | FLANGE D150 W/VALVE | 1 | 1 |
| 8 | 1330016959 | REDUCTION FLANGE 150-120 BK | 1 | 1 |
| 9 | 1330017620 | GRID D 120 W | 1 | 1 |
| 12 | 1330017597 | HINGE PANEL | 2 | 2 |
| 100 | 1330386935 | SWITCH KIT | 1 | 1 |
| 300 | 1330335102 | MOTOR.GR.8 900MC 220-50/60HZ | 1 | 1 |
| 450 | 1330570382 | M.BOARD GR.ATFRR 120- 2 0AUX) | 1 | 1 |
| | | | | |
| N.I. | 9029793578 | CARBON FILTER (EFF62) | | |
| N.I. | 4055171344 | CARBON FILTER LONG LIFE (EFF77) | | |
| N.I. | 1330071067 | CAPACITOR 6,3MF 450V - 416250828 | 1 | 1 |
| N.I. | 1330374938 | LED POWER SUPPLY 12V DC 5W 110-24VAC | 1 | 1 |

| Publication Version Control Chart | | |
|--|-------------------|-------------|
| Issue Number | Reason | Date |
| 1 | Original Document | 29-01-2019 |