



**ELECTROLUX HOME PRODUCTS PTY LTD**  
ABN 51 004 762 341

Technical Publication N° RH086

Issue: 2  
Date: 04/11

**WEB SITE ADDRESS: [www.partnship.com.au](http://www.partnship.com.au)**

***ELECTROLUX***  
***CANOPY RANGEHOOD***

***MODEL:***

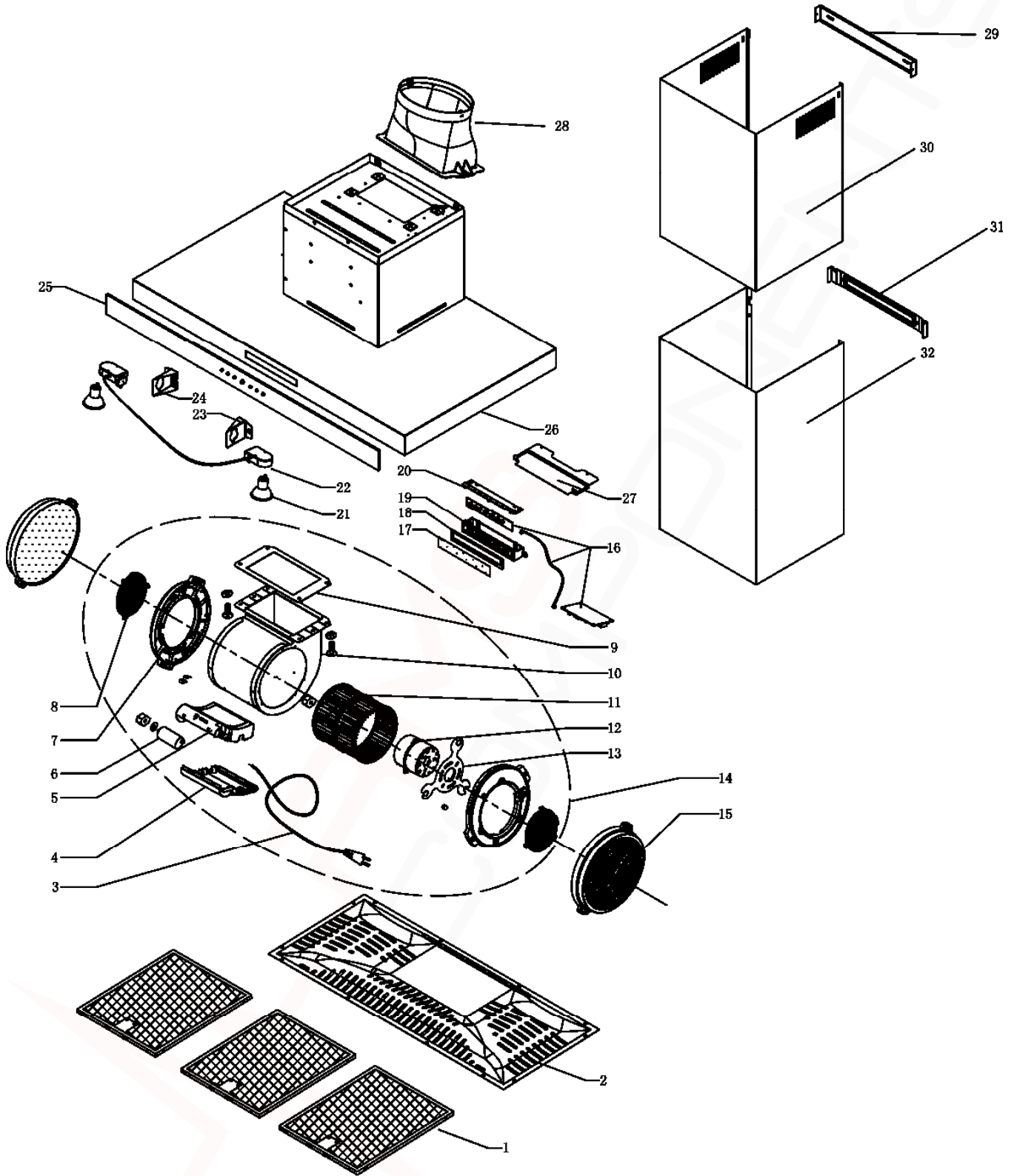
**ERCE9025BK**  
**PNC 942001166**

<b>VARIANT CHANGE SUMMARY</b>	
	INTRODUCTION

<b>Release Date:</b>	
ERCE9025BK	01/10/09

MODELS: ERCE9025BK  
PNC 942001166

EX. VIEW DRAWING 7191  
GENERAL ASSEMBLY



ITEM	PART N°	DESCRIPTION	QTY
1	<b>E653020</b>	Metal Filter (with decorative panel)	3
2	<b>N.P.N.</b>	Inner Panel Hood	x
3	<b>E601010</b>	Power Cord with Plug	1
4	<b>N.P.A.</b>	Connection Box Cover (split version)	1
5	<b>N.P.A.</b>	Connection Box (split version)	1
6	<b>E621010</b>	Capacitor 5.5uF 450V	1
7	<b>N.P.A.</b>	UL Lateral Cover	2
8	<b>N.P.A.</b>	Class II Inlet Grid	2
9	<b>N.P.A.</b>	Anti Vibration Joint	1
10	<b>N.P.A.</b>	Motor Group Casing	1
11	<b>N.P.A.</b>	Turbine	1
12	<b>E649020</b>	TA Motor 220V 50 Hz	1
13	<b>N.P.A.</b>	Motor Mounting Bracket TA Motor	1
14	<b>E260045</b>	Motor Group Assy	1
15	<b>AR610CF</b>	Replacement Carbon Filter (filter only)	2
16	<b>E639005</b>	TC TA 3V Switch PCB	1
17	<b>N.P.A.</b>	Diffusion Paper for TC Switch	1
18	<b>N.P.A.</b>	Adhesive Foam for TC Switch	1
19	<b>N.P.A.</b>	Control Box for TC Switch	1
20	<b>N.P.A.</b>	Control Box Cover for TC Switch	1
21	<b>E694055</b>	Halogen Lamp GU10-220V	2
22	<b>E251035</b>	Halogen Lamp Holder Assy GU10-220V	1
23	<b>N.P.A.</b>	Bracket Halogen Lamp Holder - Right	1
24	<b>N.P.A.</b>	Bracket Halogen Lamp Holder - Left	1
25	<b>N.P.A.</b>	Frontal Glass	1
26	<b>N.P.A.</b>	Stainless Steel Casing	1
27	<b>N.P.A.</b>	Bracket TC Switch	1
28	<b>E607130</b>	ADAPTOR FLUE DIA 150MM	1
29	<b>E629095</b>	Bracket Flue Cover - Upper	1
30	<b>E629105</b>	Flue Cover St/Steel - Upper 450mm	1
31	<b>E629100</b>	Bracket Flue Cover - Lower	1
32	<b>E629110</b>	Flue Cover Stainless Steel - Lower	1

<b>DUCTING ACCESSORIES</b>			
N.I.	<b>AR150F</b>	Kit-150mm Galvabond Flue 1200mm	x
N.I.	<b>AR150FD</b>	Kit-150mm Alum Flexi Duct 1m	x
N.I.	<b>AR150FJ</b>	Kit-150mm Flue Joiner	x
N.I.	<b>AR150RC</b>	Kit-150mm G/Bond Roof Cowl	x
N.I.	<b>AR150WV</b>	Kit-150mm Wall Vent + Flexi Duct	x
N.I.	<b>AR910RK</b>	Recirculating Kit (Tee piece & carbon filter)	x
N.I.	<b>AR610FS</b>	Flue Cover Stainless Steel Extn 1200mm	x