

Electrolux

ELECTROLUX HOME PRODUCTS PTY LTD

ABN 51 004 762 341

Technical Publication N° RH1039.docx

Issue: 1

Date: 1/19

Electrolux

90cm WALL MOUNTED CANOPY RANGEHOOD



MODEL / PNC

ERC9025SD 956004012 00

MAINTENANCE LEVEL CHANGE SUMMARY

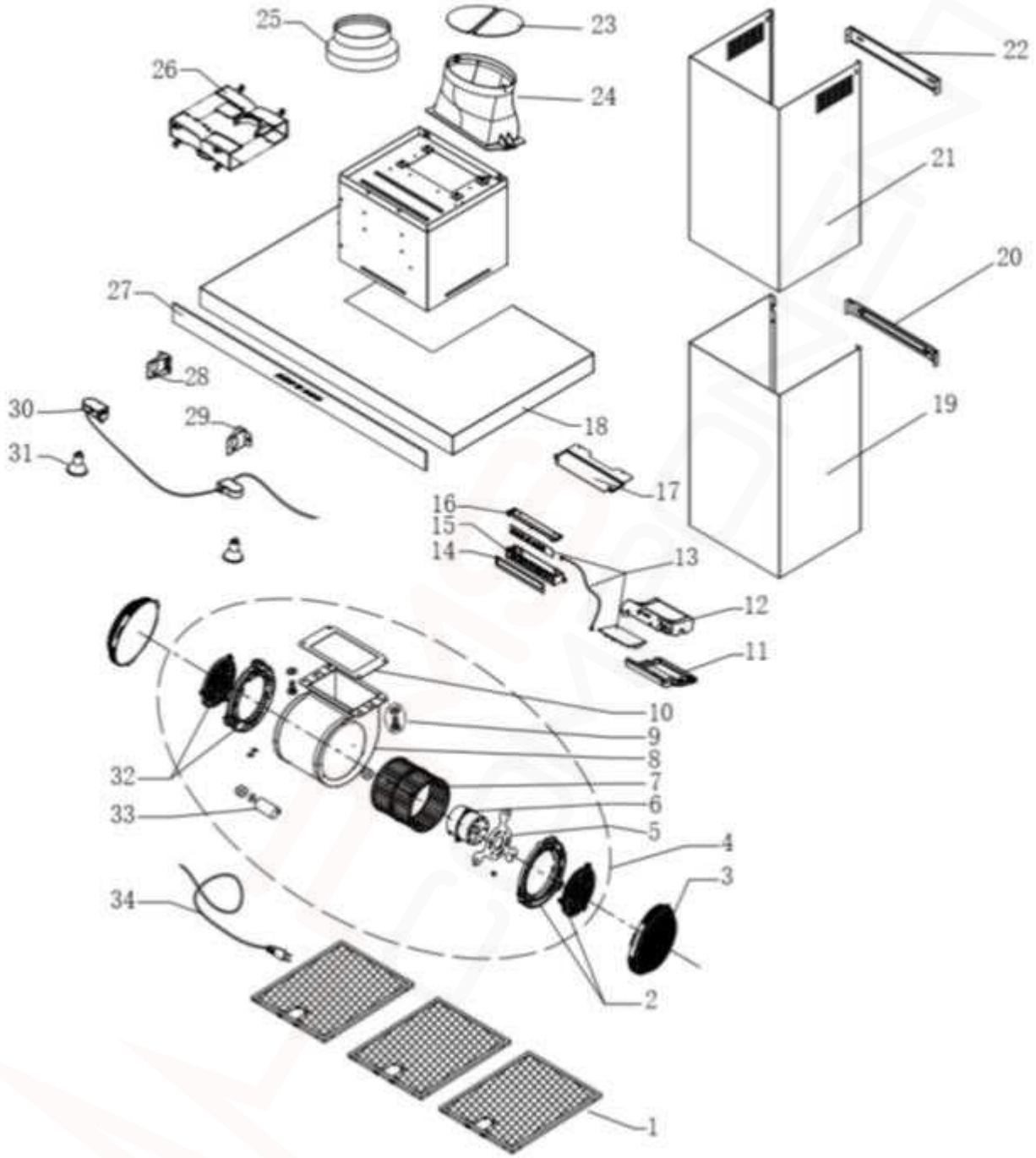
ML	Description	Release Date
0	Initial Issue	02/2019

MODEL NUMBER IDENTIFICATION

FREE STANDING COOKERS										
W Brand	B Construction	E Oven Fuel Type	S Added Features	# Width	# Hob Type	# Specification Level	W Colour	A Series	R Side Opening Door Type	G Gas Type
W = Westinghouse C = Chef E = Electrolux Z = Zanussi S = Simpson	E = Elevated Cooker F = Front Control Freestanding Cooker L = Rear Control Freestanding Cooker	E = Electric G = Gas	Leave blank for all except the below: S = Side Opening Door P = Pyro	5 = 60 - 64cm 6 = 60 - 66cm 7 = 70 - 78cm 8 = 80 - 86cm 9 = 90 - 96cm 1 = 100cm and above	IF FUEL TYPE = G 0 = No wok 1 = Wok IF FUEL TYPE = E 2 = Radiant Coil 3 = Solid 4 = Ceramic 5 = Induction 6 = Dual fuel	Even = 010, Odd = Sep Grill 0 = Lowest Spec 1 2 3 4 5 6 7 8 9 = Highest Spec	W = White S = Stainless Steel B = Black	A = SAFR B = 1st series change C = 2nd series change etc	L = Left Hand Opening R = Right Hand Opening	LP = Liquefied Petroleum NG = Natural Gas
BUILT-IN OVENS										
W Brand	B Construction	E Oven Fuel Type	S Added Features	# Width	# Cavity Type	# Specification Level	W Colour	A Series	G Gas Type	R Side Opening Door Type
W = Westinghouse C = Chef E = Electrolux Z = Zanussi S = Simpson	V = Built-in oven	E = Electric G = Gas	Leave blank for all except the below: S = Side Opening Door M = Microwave P = Pyro	3 = 30cm - 36cm 4 = 40cm - 46cm 5 = 50cm - 56cm 6 = 60cm - 66cm 7 = 70cm - 76cm 8 = 80cm - 86cm 9 = 90cm - 96cm 1 = 100cm - 110cm 2 = 120 cm +	1 = Single 2 = Duo 3 = Double 4 = Combo Oven 5 = Sep grill und/bench 6 = Sep grill wall oven 7 = Compact	0 = Lowest Spec 1 2 3 4 5 6 7 8 9 = Highest Spec	W = White S = Stainless Steel B = Black	A = SAFR B = 1st series change C = 2nd series change etc	LP = Liquefied Petroleum NG = Natural Gas	L = Left Hand Opening R = Right Hand Opening
BUILT-IN HOBS										
W Brand	B Construction	# Hob Type	# Width	# No. Burners/Zones	# Specification Level	W Colour	A Series			
W = Westinghouse C = Chef E = Electrolux Z = Zanussi S = Simpson	H = Hob	IF ELECTRIC HOB: S = Solid C = Ceramic I = Induction R = Radiant Coil M = Mix IF GAS HOB: G = Gas D = Dual Fuel	3 = 36cm or below 4 = 40cm - 46cm 5 = 50cm - 56cm 6 = 60cm - 66cm 7 = 70cm - 76cm 8 = 80cm - 86cm 9 = 90cm - 96cm 1 = 100cm - 110cm 2 = 120 cm and above	1 2 3 4 5 6 7 8 9	0 = Lowest Spec 1 2 3 4 5 6 7 8 9 = Highest Spec	W = White S = Stainless Steel B = Black	A = SAFR B = 1st series change C = 2nd series change etc			

MODEL: ERC9025SD

CANOPY COMPLETE ASSEMBLY



ITEM	PART N°	DESCRIPTION	QTY
1	E653035	FILTER WITH AL. CLIP	3
2	E607165	COVER MOTOR WITH GRILLE (RIGHT)	1
3	AR610CF	CHARCOAL FILTER	2
4	E260045	MOTOR GROUP WITH TA 220V CLASS II	1
5	E629040	MOTOR MOUNTING BRACKET	1
6	E649020	MOTOR 220V 50HZ	1
7	E607075	FAN TURBINE	1
8	N.P.N	NOT AVAILABLE AS A SPARE PART	
9	E627000	SCREW K MOTOR GROUP CASING	4
10	E605005	ANTIVIBRATION JOINT	1
11	E607100	CONNECTION BOX COVER (SPLIT VERSION)	1
12	E607105	CONNECTION BOX (SPLIT VERSION)	1
13	63905285	PCB POWER & CONTROL ASSY	1
14	E605015	ADHESIVE FOAM FOR TC SWITCH	1
15	E607120	CONTROL BOX FOR TC SWITCH	1
16	E607125	CONTROL BOX COVER FOR TC SWITCH	1
17	E629090	TC SWITCH BRACKET	1
18	N.P.N	NOT AVAILABLE AS A SPARE PART	
19	E629110	FLUE COVER S.STEEL LOWER TUBE	1
20	E629100	LOWER CONDUIT FIXING PLATE-HOOD-ALFA	1
21	E629385	FLUE COVER S.STEEL UPPER	1
22	E629095	UPPER CONDUIT FIXING PLATE	1
23	60700940	NON-RETURNING VALVE-K SERIES	2
24	E607130	ADAPTOR 150 OUTLET BASE	1
25	E607210	REDUCER 150 TO 120 OUTLET ADAPTER	1
26	AR610RK	C RECIRCULATING KIT	1
27	E694175	GLASS PANEL_ERC9025SD	1
28	E629085	BRACKET LAMP HOLDER LEFT	1
29	E629080	BRACKET LAMP HOLDER RIGHT	1
30	E251035	HOLDER HAL. LAMP ASSEMBLY 2 GU10 LAMP-HOOD-	1
31	E694055	HALOGEN LAMP GU10-220V 50W	2
32	E607170	COVER RING WITH GRILLE (LEFT)	1
33	E621035	CAPACITOR 5.5UF 450V P2	1
34	E601025	POWER CORD SAA (AUS)	1
N.I.	AR150RC	COWL ROOF Ø150mm FLUE	X
N.I.	AR150F	FLUE PIPE Ø150mm x 1200mm	X
N.I.	AR150WV	VENT WALL Ø150mm FLUE	X
N.I.	AR150FD	FLUE PIPE FLEXI Ø150mm x 1000mm	X
N.I.	AR125FD	FLUE EXTENDABLE Ø125mm	X
N.I.	1438124	TAPE 3M ALUM FOIL 55M RL 50mm	X

Publication Version Control Chart		
Issue Number	Reason	Date
1	Original Document	DD-MM-20YY