

***DISHLEX***

***DOMESTIC HOUSEHOLD  
DISHWASHERS***

CONTENTS	PAGE N°
CABINET and BASE ASSEMBLY	2 & 3
DOOR ASSEMBLY	4 & 5
ELECTRICAL COMPONENTS	6 & 7
PUMP, SUMP and HYDRAULIC SYSTEM	8 & 9
CONTROL PANEL and WORK TOP ASSEMBLY	10 & 11
BASKET ASSEMBLY	12 & 13
AFTER MARKET ACCESSORIES	14
WIRING DIAGRAM, LEGEND and CIRCUIT DIAGRAM	15 - 17

**NOTE: In Parts Listings**

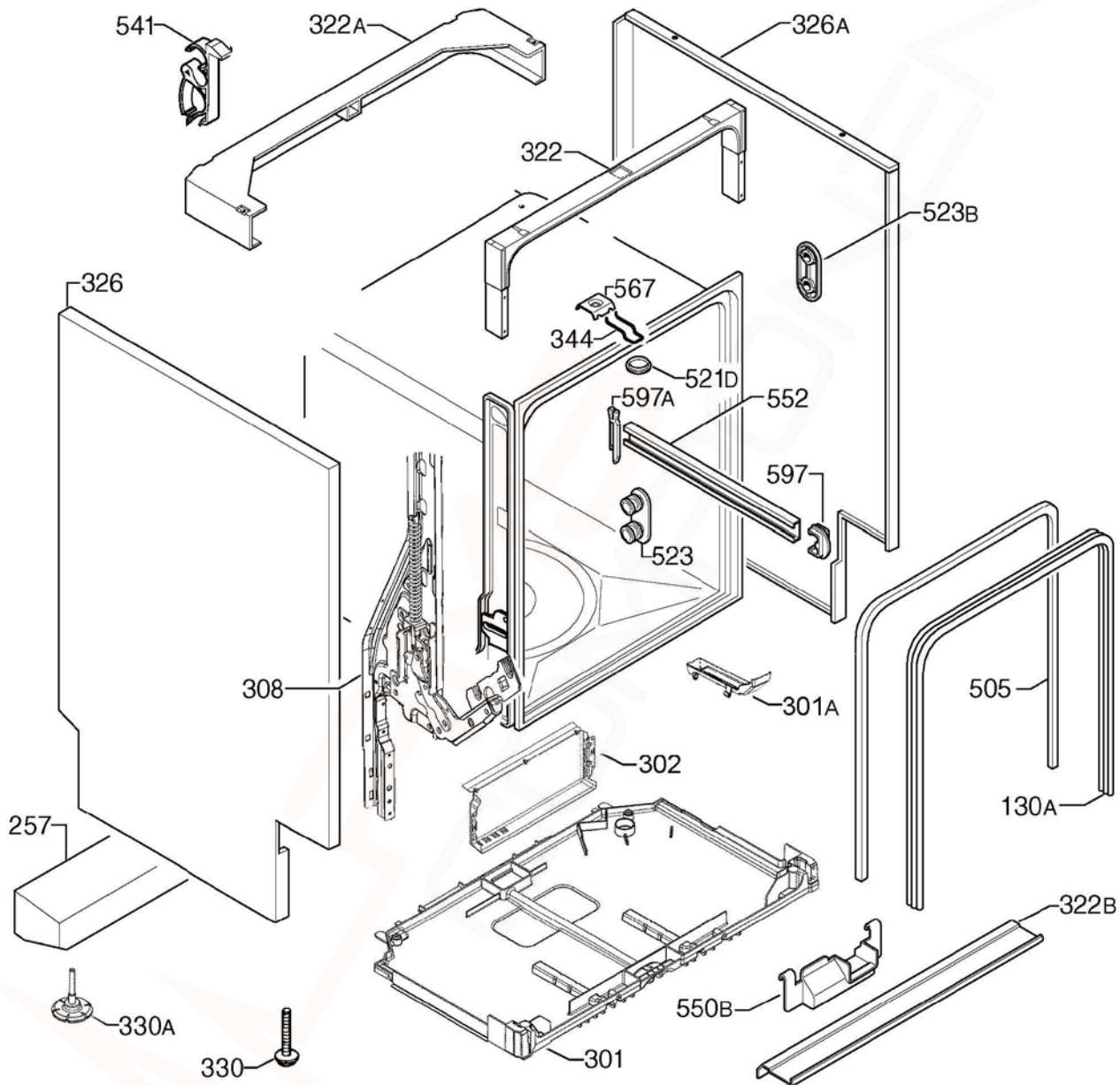
N.I.	=	Not Illustrated
N.P.A.	=	No Part Available
N.P.N.	=	Not Used on this Model

***MODEL:***

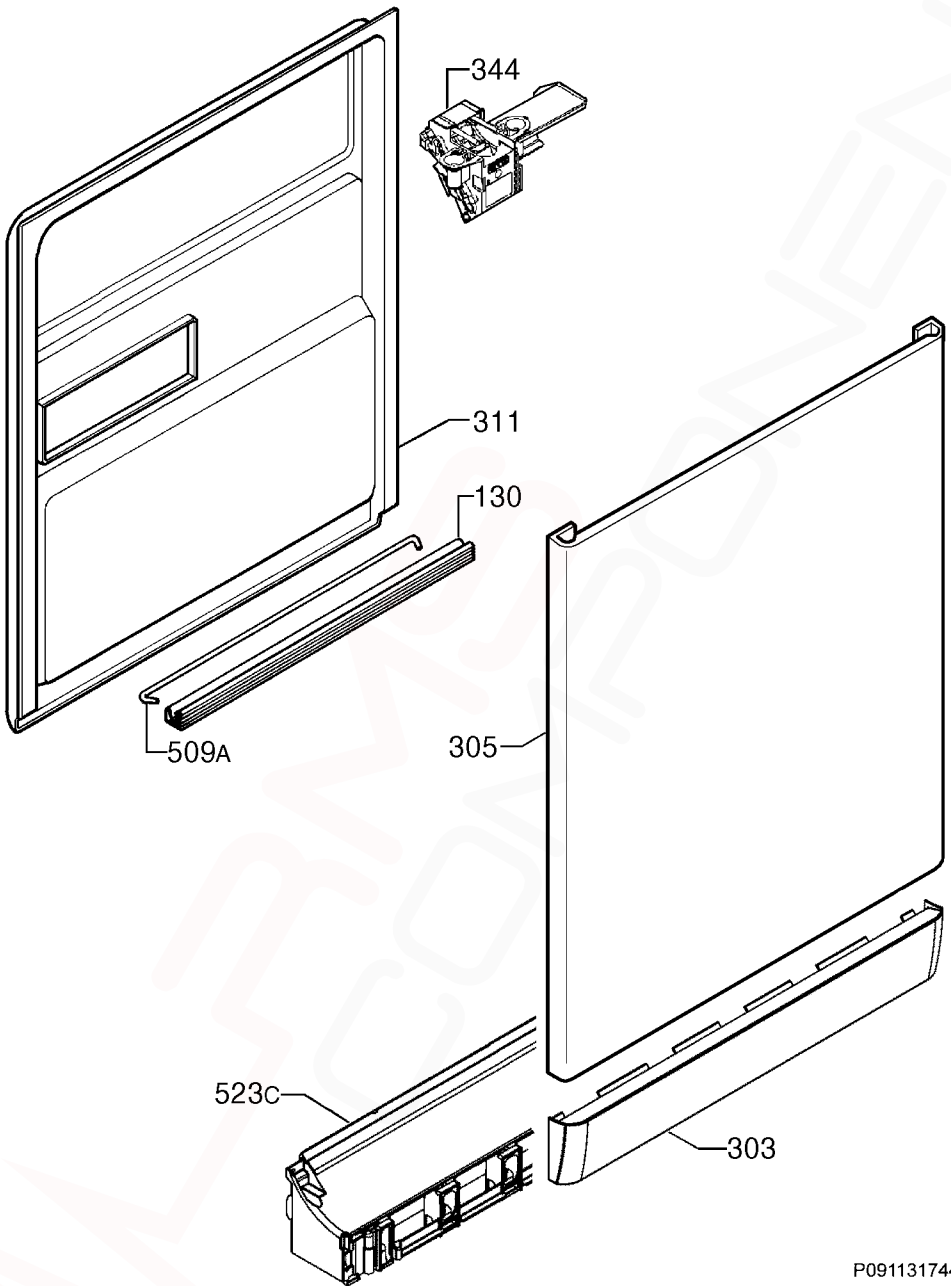
***DSF6305X***

***PNC:***

***911516171 03***



ITEM	PART N°.	DESCRIPTION	EX. P09113205015	QTY
130A	<b>1171265026</b>	Gasket Door Ø1730		1
257A	<b>N.P.A.</b>	Counterweight Side Dishwasher		-
301	<b>140000527014</b>	Tray Bottom Spillage		1
301A	<b>4055250858</b>	Kit Overflow Hose		1
302	<b>140000750012</b>	Cover Electronic PCB - Metal		1
308	<b>4055325056</b>	Kit Hinge Left-Right		1
322	<b>1560799114</b>	Brace Front Upper Zinc-Plated		1
322A	<b>1170350043</b>	Brace Crossbar Upper Rear		1
322B	<b>140000212039</b>	Brace Crossbar Front Lower		1
326	<b>1170380610</b>	Panel Side Left - Silver		1
326A	<b>1170380719</b>	Panel Side Right - Silver		1
330	<b>1520664-10/1</b>	Foot Adjustable Ø36mm		2
330A	<b>8075188014</b>	Foot Adjustable Ø48mm		2
344	<b>1522344-05/8</b>	Latch Door Lock		1
505	<b>1526715410</b>	Trim Tub Black		1
521D	<b>1526576101</b>	Cover Latch Hole		1
523	<b>4055260790</b>	Support Roller Kit Dark Grey (4 Pk)		1
523B	<b>1118814-00/1</b>	Bracket Stiffening		4
541	<b>N.P.A.</b>	Hose Clamp		-
550B	<b>1522345071</b>	Cover Wiring Protection		1
552	<b>140003656026</b>	Rail Basket Upper		2
567	<b>1523236-03/0</b>	Nut Speed Clip (Plaque)		1
597	<b>1520479419</b>	Stop Basket Front Dark Grey		2
597A	<b>6461234061</b>	Stop Basket Back Dark Grey		2



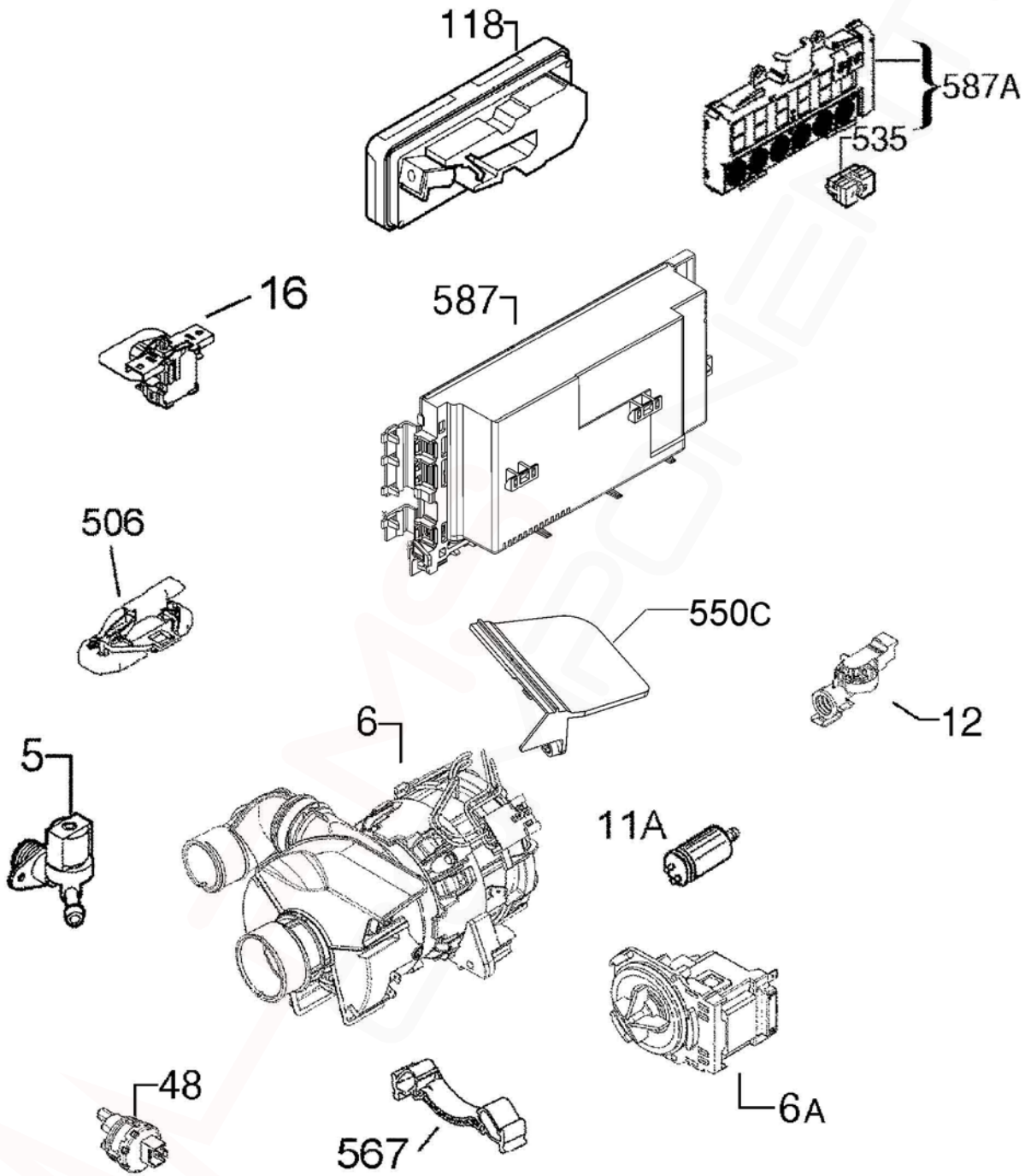
P09113201200

**MODEL: DSF6305X**

**PNC 911516171 03**

**EX. VIEW P09113174465  
DOOR ASSEMBLY**

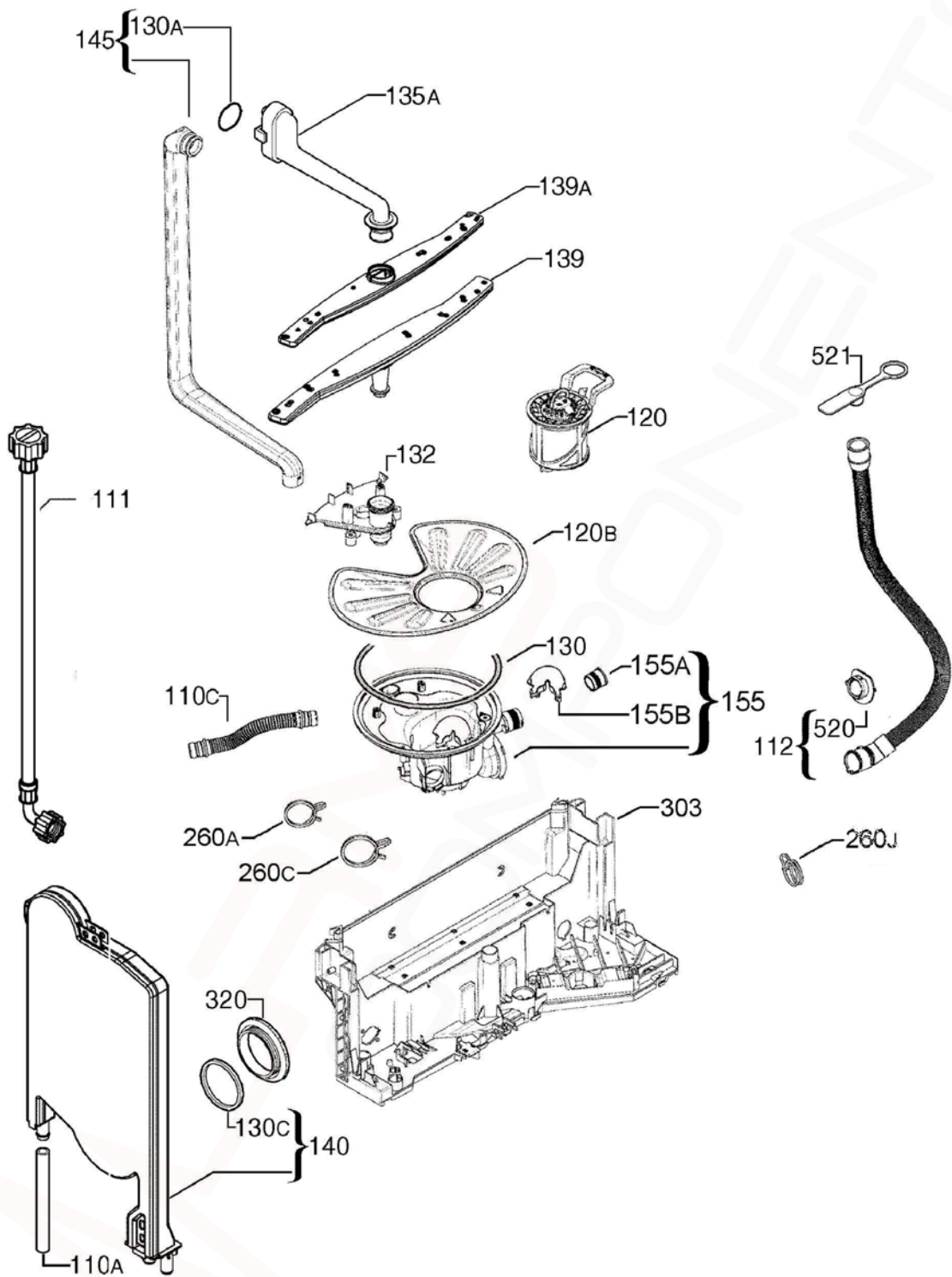
<b>ITEM</b>	<b>PART N°.</b>	<b>DESCRIPTION</b>	<b>EX. P09113174465</b>	<b>QTY</b>
130	<b>1527401-00/2</b>	Gasket Door Lower Blk x 550mm		<b>1</b>
303	<b>8070407013</b>	Plinth Inox		1
305	<b>1561221365</b>	Panel Door Outer - Inox		1
311	<b>140025959028</b>	Panel Door Inner		<b>1</b>
344	<b>1113150120</b>	Latch Door Lock		1
509A	<b>1520419-14/2</b>	Tie Hinge		1
523C	<b>1170156-03/6</b>	Holder Plinth - Dark Grey		1



P09113205347

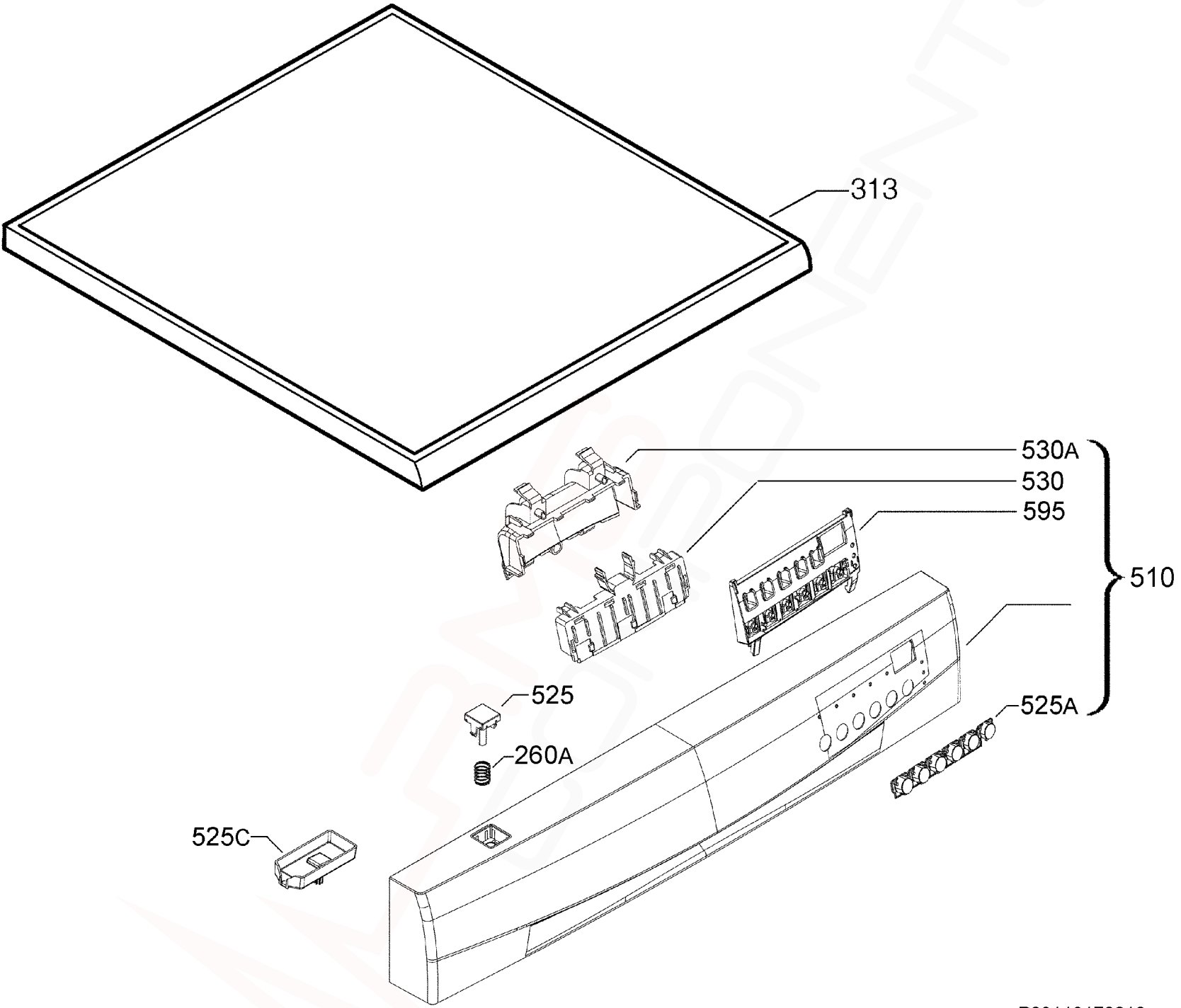
**MODEL:****DSF6305X****PNC 9115161701 03****EX. VIEW P09113183466  
ELECTRICAL COMPONENTS  
ASSEMBLY**

<b>ITEM</b>	<b>PART N°.</b>	<b>DESCRIPTION</b>	<b>EX. P09113183466</b>	<b>QTY</b>
5	<b>140001158017</b>	Valve Fill 2 5Lt/min		1
6	<b>140002106056</b>	Pump Circulation Heater Comp 1800W		1
6A	<b>140000443030</b>	Pump Drain 50Hz		1
11A	<b>1115927012</b>	Capacitor Motor 3µf		1
12	<b>140000554067</b>	Switch Pressure Sensor		1
16	<b>1113337024</b>	Switch Main Auto OFF		1
48	<b>140000401012</b>	Sensor Temperature Turbidity		1
110C	<b>1174356111</b>	Hose Sump Pressure Sensor x212mm		1
118	<b>1113330128</b>	Dispenser Detergent C/R		1
506	<b>140000565048</b>	Switch Float Assembly		1
535	<b>1119387007</b>	Display LED 7mm		1
567	<b>1171934019</b>	Bracket Motor Buffer		2
587	<b>973911516170033</b>	PCB Configured Electronic		1
587A	<b>1113367617</b>	PCB User Interface Amber EDW1500		1
N.I.	<b>140001945033</b>	Cord Service AU 2 15m		1
N.I.	<b>8074849012</b>	Harness PCB Heater		1
N.I.	<b>140008919015</b>	Harness PCB Door		1
N.I.	<b>8091583081</b>	Harness PCB Pump		1





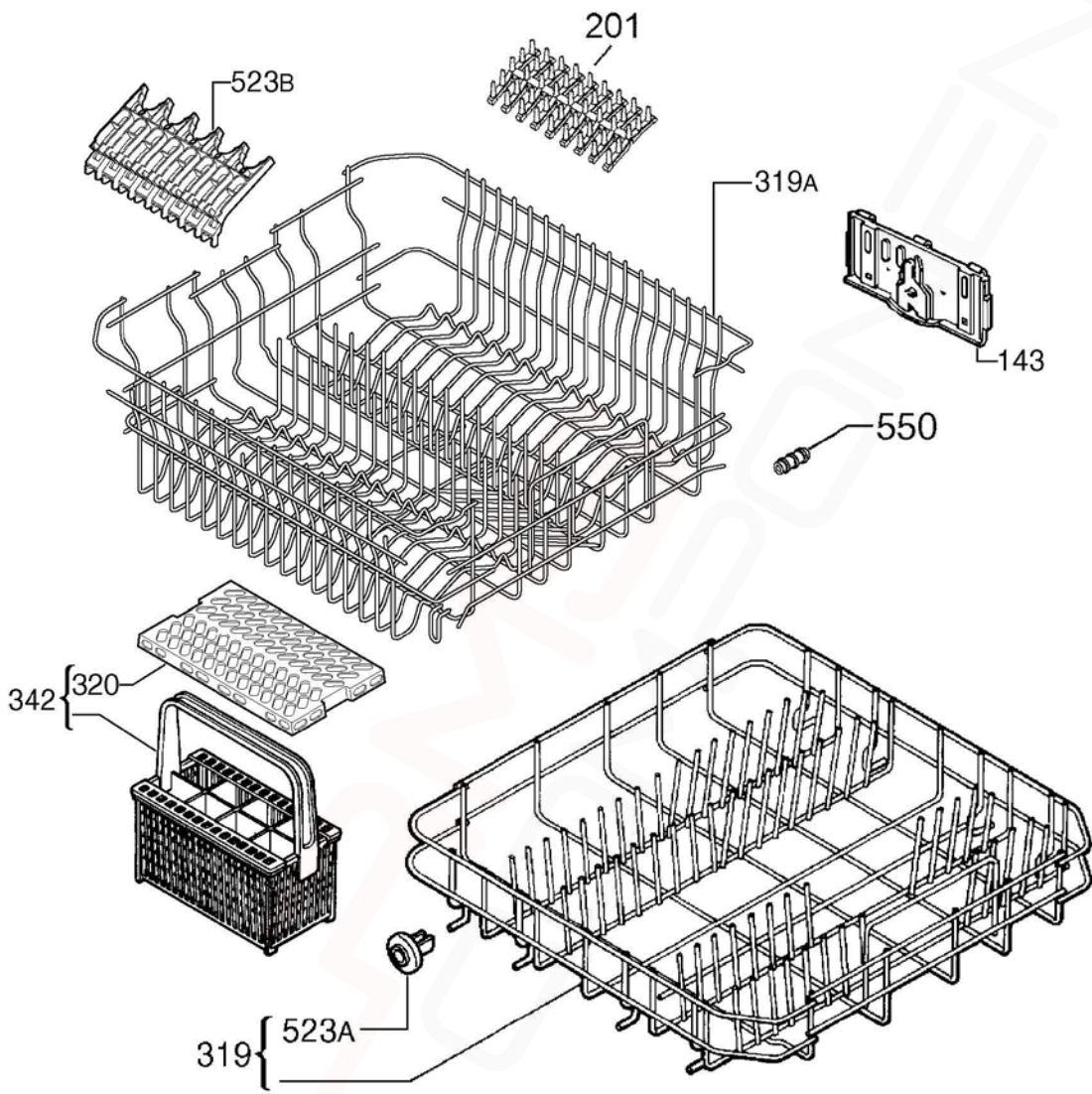
<b>ITEM</b>	<b>PART N°.</b>	<b>DESCRIPTION</b>	<b>EX. P09113200077</b>	<b>QTY</b>
110A	<b>1526815-10/3</b>	Tube Container Cup Fill Valve x280mm		1
110C	<b>140000059034</b>	Hose Sump Water Softener x370mm		1
111	<b>1400000234030</b>	Hose Feeder x1500mm		1
112	<b>140010997017</b>	Hose Drain x2230mm		1
120	<b>8075472178</b>	Filter Drain Grey Assembly		1
120B	<b>1119209045</b>	Filter Flat		1
130	<b>1119186003</b>	Sump O-Ring		1
130A	<b>1523119-01/2</b>	Seal Channel Drainage		1
130C	<b>N.P.A.</b>	Seal Round Container Cup		-
132	<b>1119158176</b>	Support Spray Arm Lower Dark Grey		1
135A	<b>1561425370</b>	Duct Light Grey 229.6mm		1
139	<b>140000584072</b>	Spray Arm Lower Light Grey		1
139A	<b>1118949526</b>	Spray Arm Upper Light Grey 450mm		1
140	<b>1170481731</b>	Container Cup Small		1
145	<b>140000740021</b>	Manifold Inner		1
155	<b>140000494298</b>	Sump Water Assembly with Air Trap		1
155A	<b>140000536015</b>	Valve Non-Return Flap Sump		1
155B	<b>1119177010</b>	Trap Sump Pump Drain		1
260A	<b>8078689026</b>	Clamp Circ Pump Flow Regulator Ø36mm		1
260C	<b>8078689034</b>	Clamp Circulation Pump Sump Ø45mm		1
260J	<b>8078689018</b>	Clamp Drain Hose Ø30mm		1
260K	<b>8078689042</b>	Clamp Ø16mm		1
303	<b>140000531065</b>	Basement Rear		1
320	<b>1526272214</b>	Vent Grill Dark Grey		1
520	<b>N.P.A.</b>	Flange Discharge Hose Ø20mm		-
521	<b>N.P.A.</b>	Stopper Drainage Hose		-



P09113184687

**MODEL:****DSF6305X****PNC 911516171 03****EX. VIEW P09113176216  
WORKTOP and CONTROL  
PANEL ASSEMBLY**

<b>ITEM</b>	<b>PART N°.</b>	<b>DESCRIPTION</b>	<b>EX. P09113176216</b>	<b>QTY</b>
260A	<b>1173192004</b>	Spring On/Off Button		1
313	<b>1561348218</b>	Work Top Inox		1
510	<b>8086202036</b>	Control Panel Inox DSF6205X		1
525	<b>1173190206</b>	Push Button On/Off Inox		1
525A	<b>140002473027</b>	Push Button Set 6 Button Inox		1
525C	<b>1173189000</b>	Push Button On/Off Protection		1
530	<b>140002463069</b>	Handle Grey		1
530A	<b>140002464067</b>	Handle Cover Grey		1
595	<b>140002474017</b>	Support Button Push		1
N.I.	<b>5190530112</b>	Screw Switch Housing 3.5x13 TTL		-



<b>ITEM</b>	<b>PART N°.</b>	<b>DESCRIPTION</b>	<b>EX. P09113187041</b>	<b>QTY</b>
143	<b>1527359945</b>	Plate Adjustment Right Hand		1
	<b>1527359952</b>	Plate Adjustment Left Hand		1
201	<b>ACC088</b>	Support Spikes Rubber Grey (2 per box)		1
319	<b>1561446319</b>	Basket Dishwasher Lower Assembly		1
319A	<b>140000152037</b>	Basket Upper Dishwasher Assy		1
320	<b>N.P.A.</b>	Grate Cutlery Basket Dark Grey		-
330	<b>4055297552</b>	Handle Basket Complete		2
342	<b>ACC107</b>	Basket Cutlery Universal (Inc. Item 320)		1
523A	<b>50286965-00/4</b>	Wheel Kit Basket Lower (8 Pieces)		1
523B	<b>140001199029</b>	Support Cup Grey		2
550	<b>8996461804602</b>	Buffer Rubber Dishwasher Upper		4
N.I.	<b>140018976013</b>	Hook Dispenser Upper Basket		1

**DISHWASHER  
ACCESSORY COMPONENTS**



ITEM	PART N°	DESCRIPTION
1	ACC017	Scalex Plus Descaler Sachet 75gm
2	ACC100	Detergent Dishwasher 1kg
3	ACC102	Rinse Aid Additive 500mls
4	ACC103	Descaler Powder 350g <b>(Dangerous Goods rules apply, min order Qty of 12)</b>
5	ACC002	Dishwasher Salt 1kg Pack
6	ACC088	Support Spikes Rubber – Grey
N.I.	ACC107	Basket Cutlery Universal
N.I.	0571400142	Hose Drain Extension Straight Cuffs 2m
N.I.	ES5323K	Hose Drain Extension Kit (1M Length)

<b>P0000300001692</b>	<b>Legend</b>
BASE BOARD	Main Electronic Board
BOF/BH	Indication Of Operation
CAPACITOR	Capacitor
DISPENSER	Detergent Dispenser
DOOR LOCK	Door Lock
DRAIN PUMP	Drain Pump
FLOW CONTROL	Flow Meter
HEATER	Heating Element
INLET VALVE	Inlet Valve
INPUT BOARD	User Interface (Display)
LEAKAGE SWITCH	Anti-Flooding Device
MAIN SWITCH	Main Switch
NTC/TURB. SENSOR	Turbidity Sensor
POWER CORD	Power Supply
PREASSURE SENSOR	Pressure Sensor
REG. VALVE	Regeneration Valve
RINSE AID	Resin Conditioning Water Switch
SALT AID	Salt
WASH PUMP	Washing Pump
GN/YE	Green/Yellow
RD	Red
BU	Blue
BR	Brown
BK	Black