

**Electrolux**

**ELECTROLUX HOME PRODUCTS PTY LTD**  
ABN 51 004 762 341

Technical Publication N° DW408

Issue: 2  
Date: 07/15

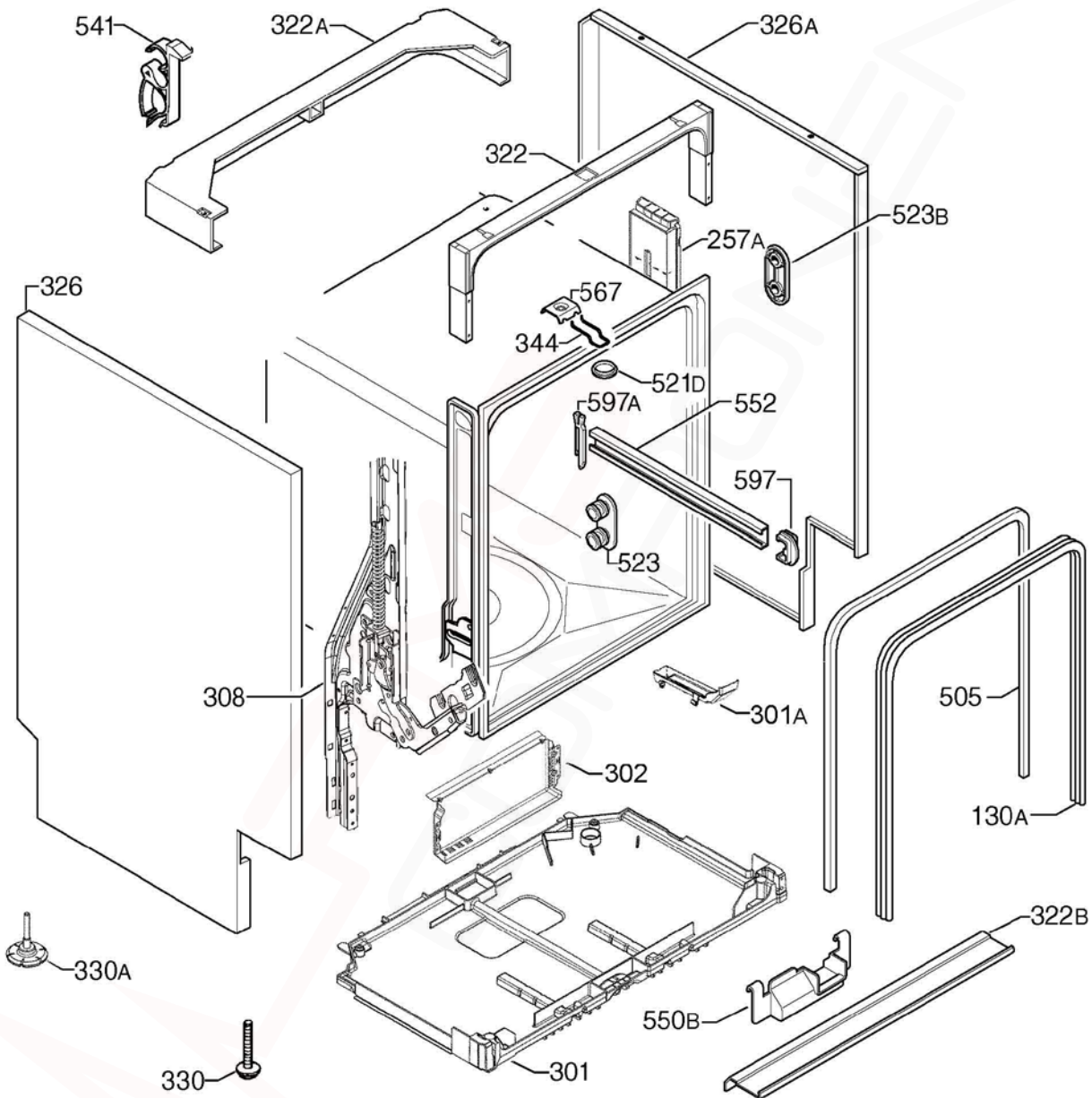
***DISHLEX***  
***HOUSEHOLD DISHWASHER***  
***12 PLACE SETTING***

***MODEL:***

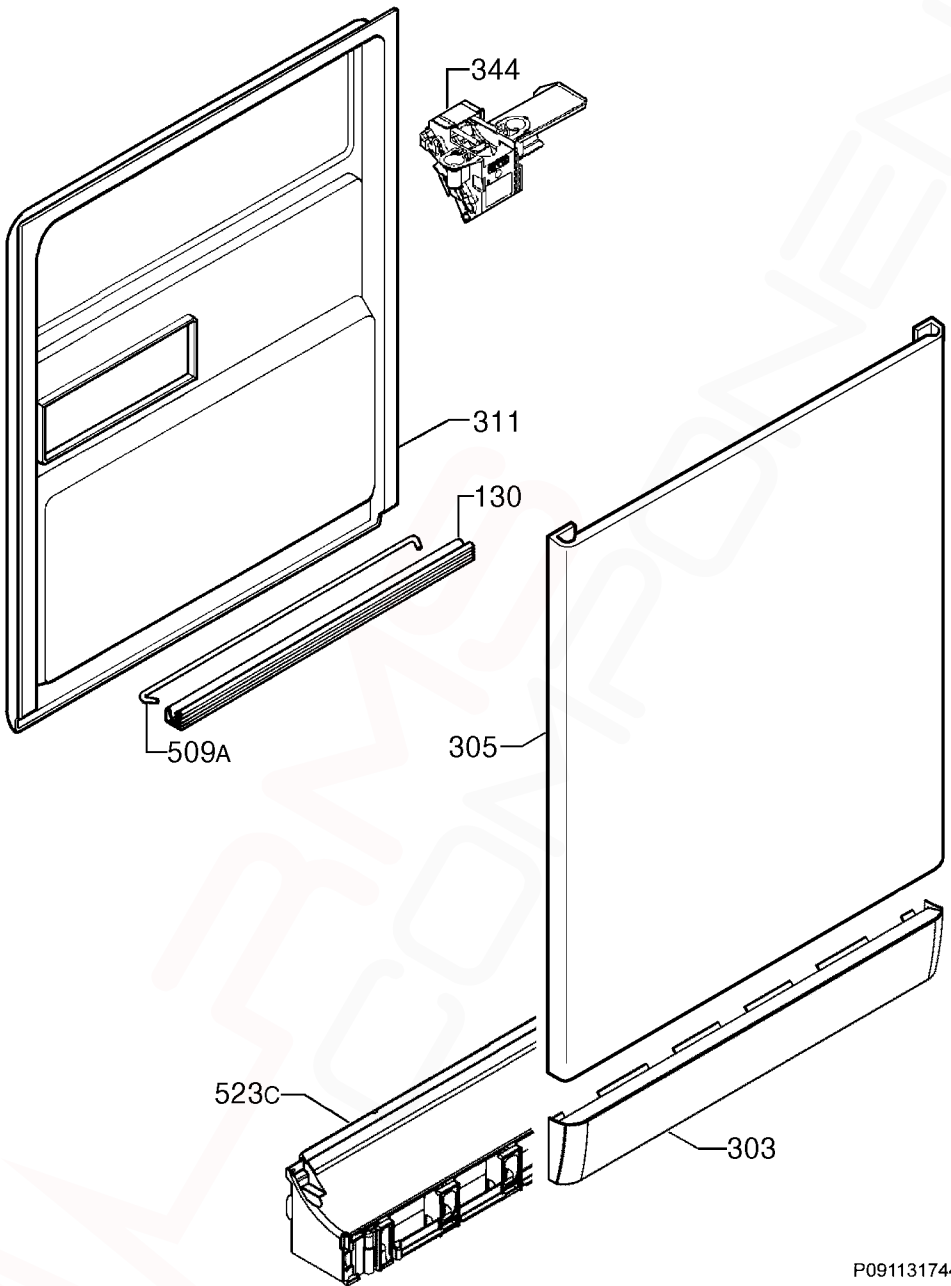
**DSF6205X**  
**PNC 911513133 00**

<b>VARIANT CHANGE SUMMARY</b>	
<b>00</b>	INTRODUCTION

<b>Release Date:</b>	
DSF6205X / 911513133 00	Oct 2014



<b>ITEM</b>	<b>PART N°.</b>	<b>DESCRIPTION EX. P09113178362</b>	<b>QTY</b>
130A	<b>1171265026</b>	Gasket Door Outer Ø1730	1
257A	<b>140000115018</b>	Counterweight Side Dishwasher	1
301	<b>140000527014</b>	Tray Bottom Spillage	1
301A	<b>4055250858</b>	Kit Overflow Hose	1
302	<b>140000750012</b>	Cover Electronic PCB - Metal	1
308	<b>4055161352</b>	Kit Hinge Left-Right	1
322	<b>1560799114</b>	Brace Front Upper Zinc-Plated	1
322A	<b>1170350-01/9</b>	Brace Rear Upper	1
322B	<b>140000212013</b>	Brace Front Lower	1
326	<b>1170380610</b>	Panel Side Left - Silver	1
326A	<b>1170380719</b>	Panel Side Right - Silver	1
330	<b>1520664-10/1</b>	Foot Adjustable Ø36	2
330A	<b>8075188014</b>	Foot Adjustable Ø48mm	2
344	<b>1522344-05/8</b>	Latch Door Lock	1
505	<b>1526715410</b>	Trimming Tub Black	1
521D	<b>1526576-00/2</b>	Hole Cover Latch	1
523	<b>50299970009</b>	Wheel Support Kit Dark Grey (4 Pieces)	1
523B	<b>1118814-00/1</b>	Stiffening Support	4
541	<b>N.P.A.</b>	Hose Clamp	-
550B	<b>1522345071</b>	Cover Wiring Protection	1
552	<b>140003656026</b>	Rail Basket Upper Complete	2
567	<b>1523236-03/0</b>	Clip Speed (Plaque)	1
597	<b>1520479419</b>	Stop Basket Front Dark Grey	2
597A	<b>6461234061</b>	Stop Basket Back Dark Grey	2



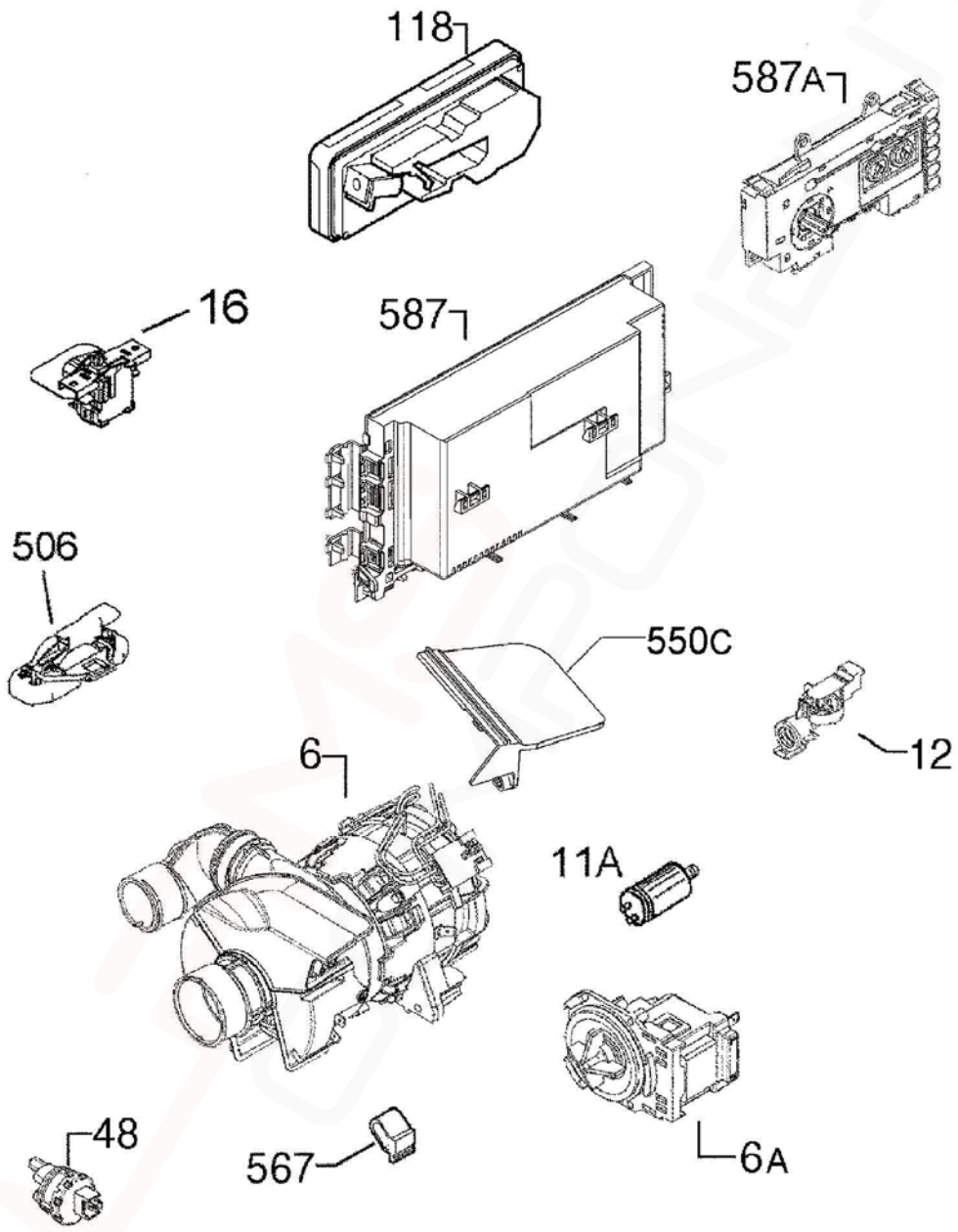
P09113187037

**MODELS: DSF6205X**

**PNC 911513133 00**

**EX. VIEW P09113174465  
DOOR ASSEMBLY**

<b>ITEM</b>	<b>PART N°.</b>	<b>DESCRIPTION</b>	<b>EX. P09113174465</b>	<b>QTY</b>
130	<b>1527401-00/2</b>	Gasket Door Lower Blk x 550mm		<b>1</b>
303	<b>8070407013</b>	Plinth Inox		<b>1</b>
305	<b>1561221365</b>	Panel Door Outer - Inox		<b>1</b>
311	<b>1170189078</b>	Panel Door Inner		<b>1</b>
344	<b>1113150120</b>	Latch Door Complete		<b>1</b>
509A	<b>1520419-14/2</b>	Tie Hinge		<b>1</b>
523C	<b>1170156-03/6</b>	Holder Plinth - Dark Grey		<b>1</b>



P09113187038

**MODELS:**

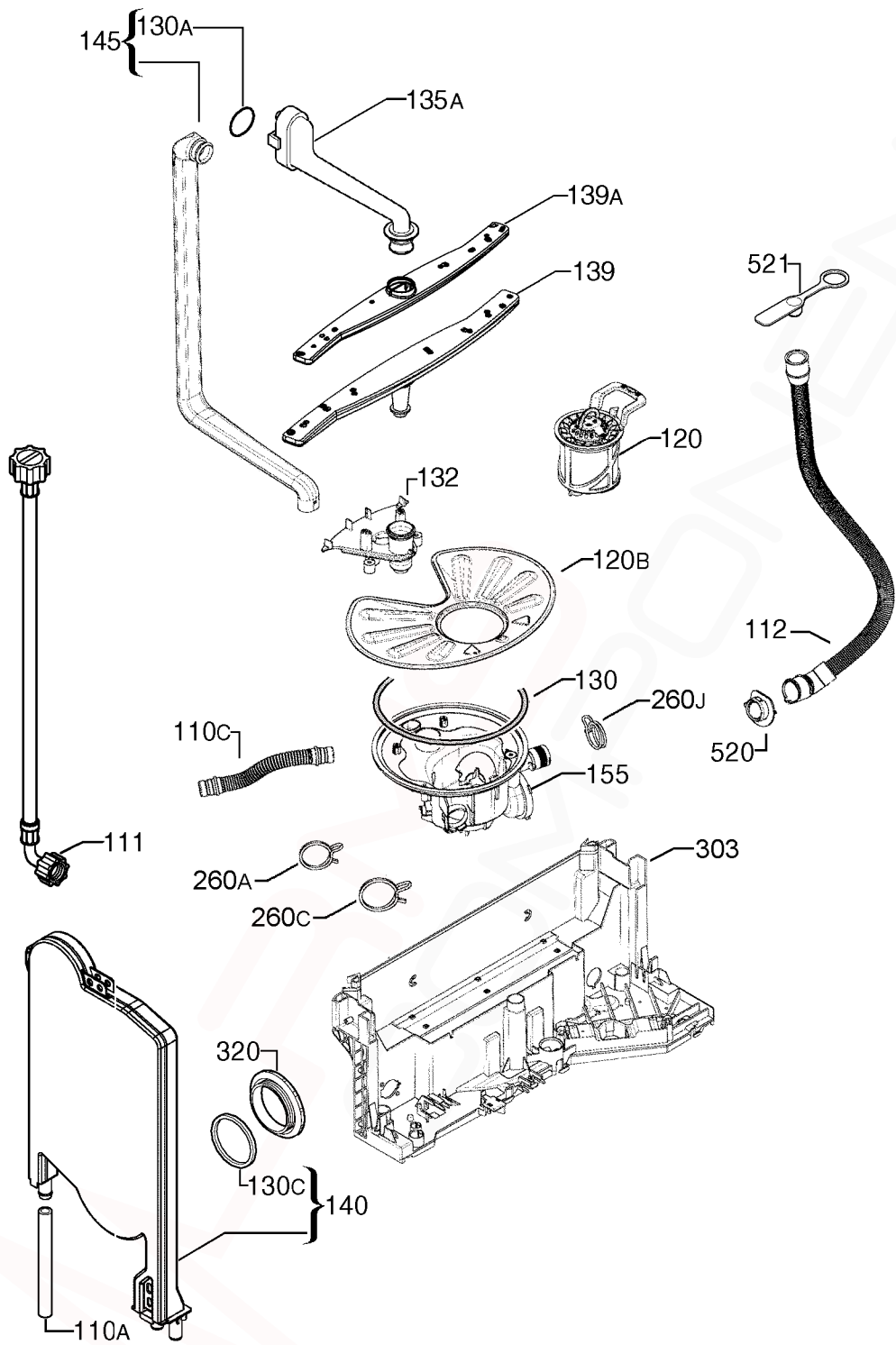
**DSF6205X**

**PNC 911513133 00**

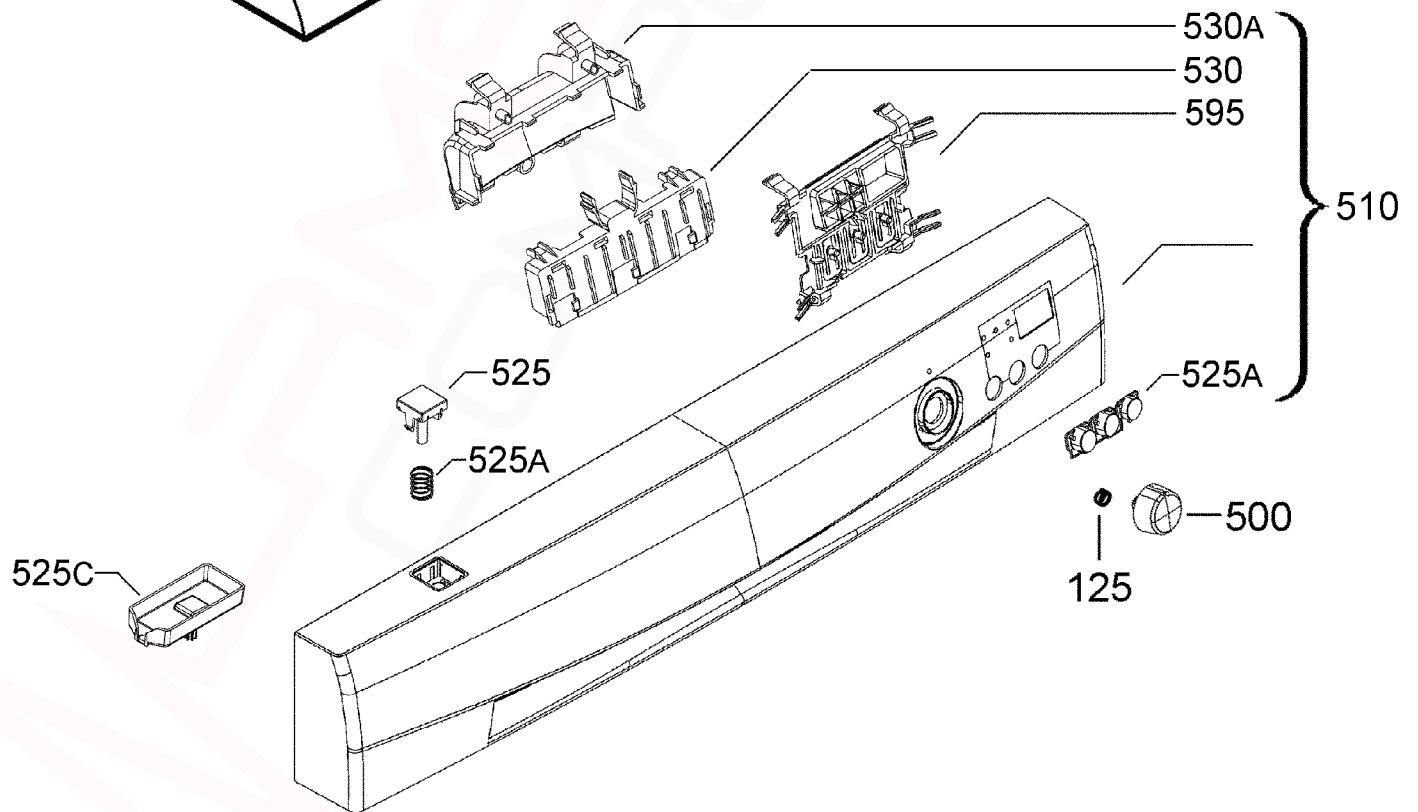
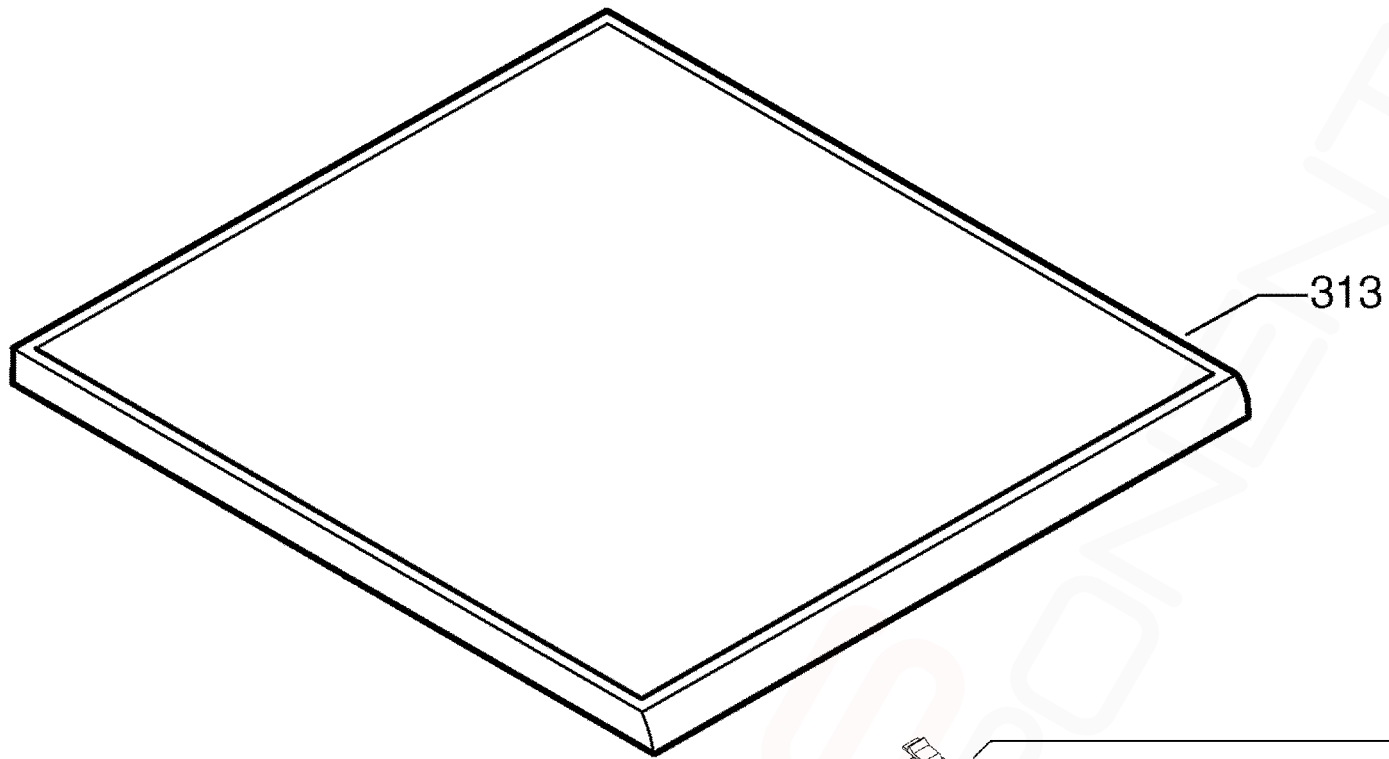
**EX. VIEW P09113180250  
ELECTRICAL COMPONENTS  
ASSEMBLY**

<b>ITEM</b>	<b>PART N°.</b>	<b>DESCRIPTION</b>	<b>EX. P09113180250</b>	<b>QTY</b>
5	<b>140001158017</b>	Valve Fill 2 5Lt/min		1
6	<b>140002106015</b>	Pump Circulation Heater Comp ASYNC		1
6A	<b>140000443030</b>	Pump Drain 50Hz		1
11A	<b>1115927012</b>	Capacitor Motor 3µf		1
12	<b>140000554018</b>	Switch Pressure		1
16	<b>1113337024</b>	Switch Main Auto Off		1
48	<b>140000401012</b>	Sensor Temperature Turbidity		1
118	<b>1113330128</b>	Dispenser Detergent C/R		1
506	<b>140000565048</b>	Switch Float Assembly		1
567	<b>1171934019</b>	Bracket Motor Buffer		2
587	<b>973911513132002</b>	Board Configured Electronic,PB200		1
587A	<b>1113381329</b>	PCB User Interface Amber EDW750		1
N.I.	<b>140001945033</b>	Cord Service AU 2 15m		1
N.I.	<b>8074849012</b>	Harness PCB Heater		1
N.I.	<b>8091580053</b>	Harness PCB Door		1
N.I.	<b>8091583040</b>	Harness PCB Pump		1





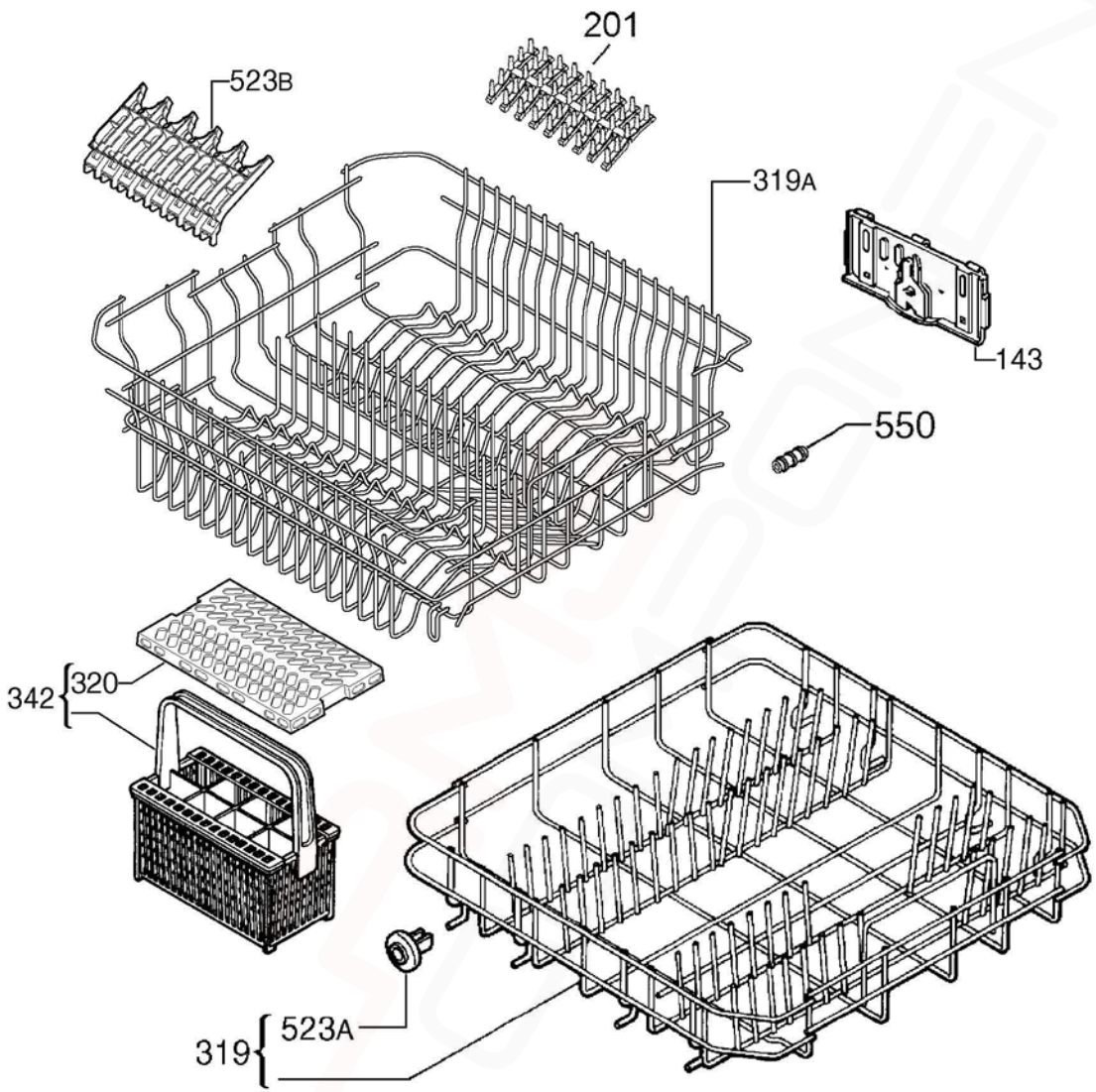
<b>ITEM</b>	<b>PART N°.</b>	<b>DESCRIPTION</b>	<b>EX. P09113176038</b>	<b>QTY</b>
110A	<b>1526815-10/3</b>	Tube Container Cup Fill Valve x 280mm		1
110C	<b>14000059034</b>	Hose Sump Water Softener x 370mm		1
111	<b>140000234030</b>	Hose Feeder x 1500mm		1
112	<b>140000599013</b>	Hose Drain x2230mm		1
120	<b>8075472012</b>	Filter Drain Assembly		1
120B	<b>1119209011</b>	Filter Flat		1
130	<b>1119186003</b>	Sump O-Ring		1
130A	<b>1523119-01/2</b>	Seal Channel Drainage		1
130C	<b>N.P.A.</b>	Seal Round Container Cup		-
132	<b>1119158119</b>	Support Spray Arm Lower		1
135A	<b>1561425206</b>	Duct Light Grey x 229.6mm		1
139	<b>140000584015</b>	Spray Arm Lower Light Grey		1
139A	<b>1118949-00/5</b>	Spray Arm Upper Light Grey x 450mm		1
140	<b>1170481731</b>	Container Cup Small		1
145	<b>140000740013</b>	Manifold Inner		1
155	<b>140000494017</b>	Sump Assembly		1
260A	<b>8078689026</b>	Clamp Circ Pump Flow Regulator Ø36mm		1
260C	<b>8078689034</b>	Clamp Circulation Pump Sump Ø45mm		1
260J	<b>8078689018</b>	Clamp Drain Hose Ø30mm		1
303	<b>140000531016</b>	Basement Rear		1
320	<b>1526272-10/7</b>	Vent Grill Dark Grey		1
520	<b>N.P.A.</b>	Flange Discharge Hose Ø20mm		-
521	<b>N.P.A.</b>	Stopper Drainage Hose		-
N.I.	<b>140000536015</b>	Valve Non-Return Flap Sump Ø23.2mm		1



P09113187040

**MODELS:****DSF6205X****PNC 911513133 00****EX. VIEW P09113176272  
WORKTOP and CONTROL  
PANEL ASSEMBLY**

<b>ITEM</b>	<b>PART N°.</b>	<b>DESCRIPTION</b>	<b>EX. P09113176040</b>	<b>QTY</b>
125	<b>1520227016</b>	Knob Spring		1
260A	<b>1173192004</b>	Spring On/Off Button		1
313	<b>1561348218</b>	Work Top Inox		1
500	<b>140002456022</b>	Knob Inox		1
510	<b>8086323030</b>	Control Panel Inox DSF6205X		1
525	<b>1173190206</b>	Push Button On/Off Inox		1
525A	<b>140002466039</b>	Push Button Set 3 Button Silv		1
525C	<b>1173189000</b>	Push Button On/Off Protection		1
530	<b>140002463069</b>	Handle Grey		1
530A	<b>140002464067</b>	Handle Cover Grey		1
595	<b>140002468019</b>	Support Button Push		1
N.I.	<b>5190530112</b>	Screw Switch Housing 3.5x13 TTL		-



<b>ITEM</b>	<b>PART N°.</b>	<b>DESCRIPTION</b>	<b>EX. P09113187041</b>	<b>QTY</b>
143	<b>1527359-32/5</b>	Plate Adjustment Right Hand		1
	<b>1527359-40/8</b>	Plate Adjustment Left Hand		1
201	<b>1380184109</b>	Support Spikes Rubber Grey		2
319	<b>1561446137</b>	Basket Dishwasher Bottom Assembly		1
319A	<b>1561219005</b>	Basket Dishwasher Upper Light Grey		1
342	<b>ACC107</b>	Basket Cutlery Universal		1
523A	<b>50286965-00/4</b>	Wheel Kit Basket Lower (8 Pieces)		1
523B	<b>140001199029</b>	Support Cup Grey		2
550	<b>8996461804602</b>	Buffer Rubber Dishwasher Upper		4
N.I.	<b>1561218007</b>	Hook Dispenser Upper Basket		1

**DISHWASHER  
ACCESSORY COMPONENTS**

**EX. VIEW DRAWING 8155-8159**



ITEM	PART N°	DESCRIPTION	Ex.
1	ACC017	Scalex Plus Descaler Sachet 75gm	
2	ACC100	Detergent Dishwasher 1kg	
3	ACC102	Rinse Aid Additive 500mls	
4	ACC103	Descaler Powder 350g <b>(Dangerous Goods rules apply, min order Qty of 12)</b>	
5	ACC002	Dishwasher Salt 1kg Pack	

## LEGEND for Wiring Diagram A00185904a & A00185904b

<b>Item</b>	<b>Description</b>
BASE BOARD	Main electronic board
BOF/BH	Indication of operation
CAPACITOR	Capacitor
DISPENSER	Detergent dispenser
DOOR LOCK	Door lock
DRAIN PUMP	Drain pump
FLOW CONTROL	Flow meter
HEATER	Heating element
INLET VALVE	Inlet valve
INPUT BOARD	User interface (display)
LEAKAGE SWITCH	Anti-flooding device
MAIN SWITCH	Main switch
NTC/TURB. SENSOR	Turbidity sensor
POWER CORD	Power supply
PREASSURE SENSOR	Pressure Sensor
REG. VALVE	Regeneration valve
RINSE AID	Resin conditioning water switch
SALT AID	Salt
WASH PUMP	Washing pump
GN/YE	Green/yellow
RD	Red
BU	Blue
BR	Brown
BK	Black