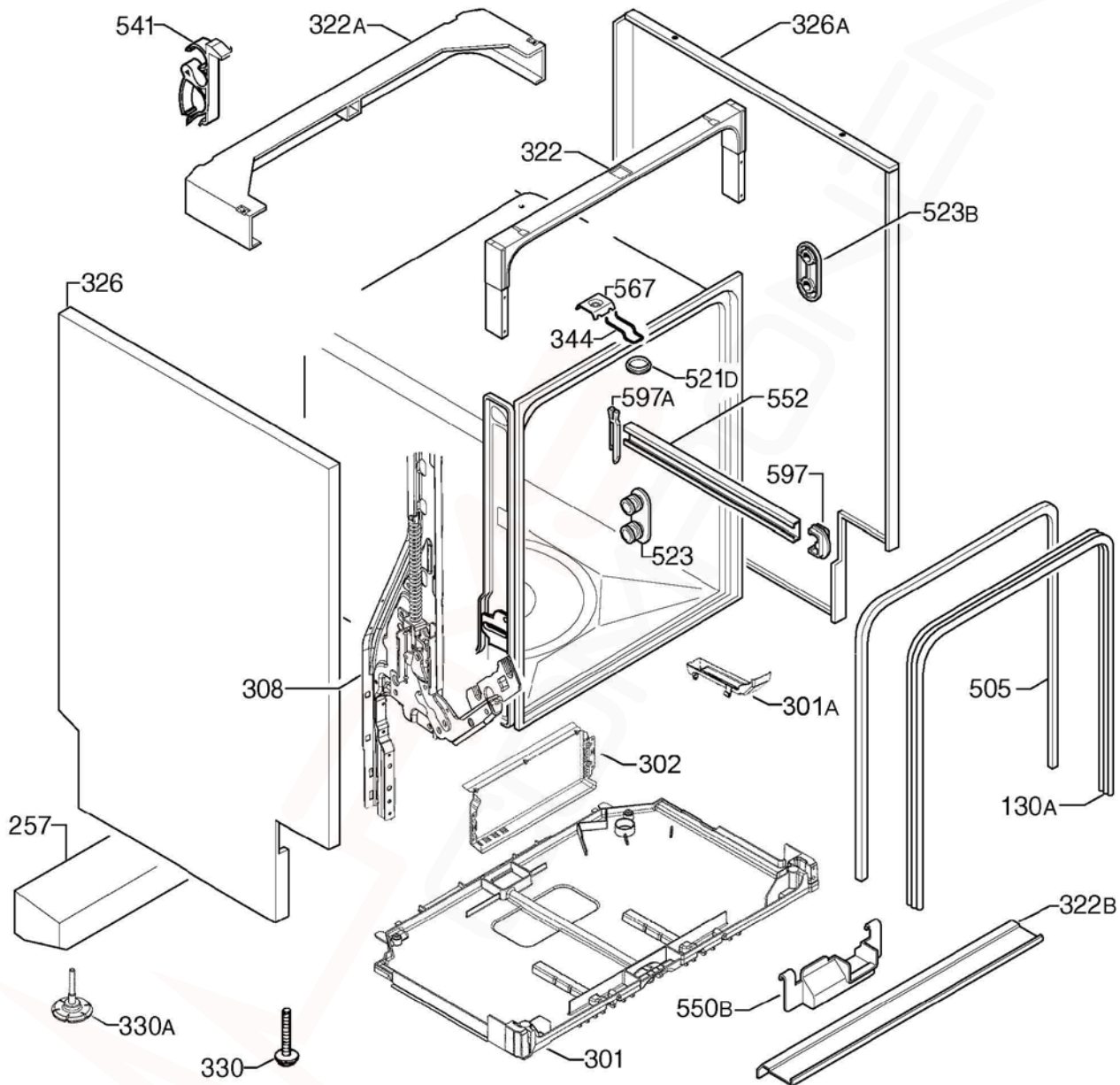


# ***DISHLEX***

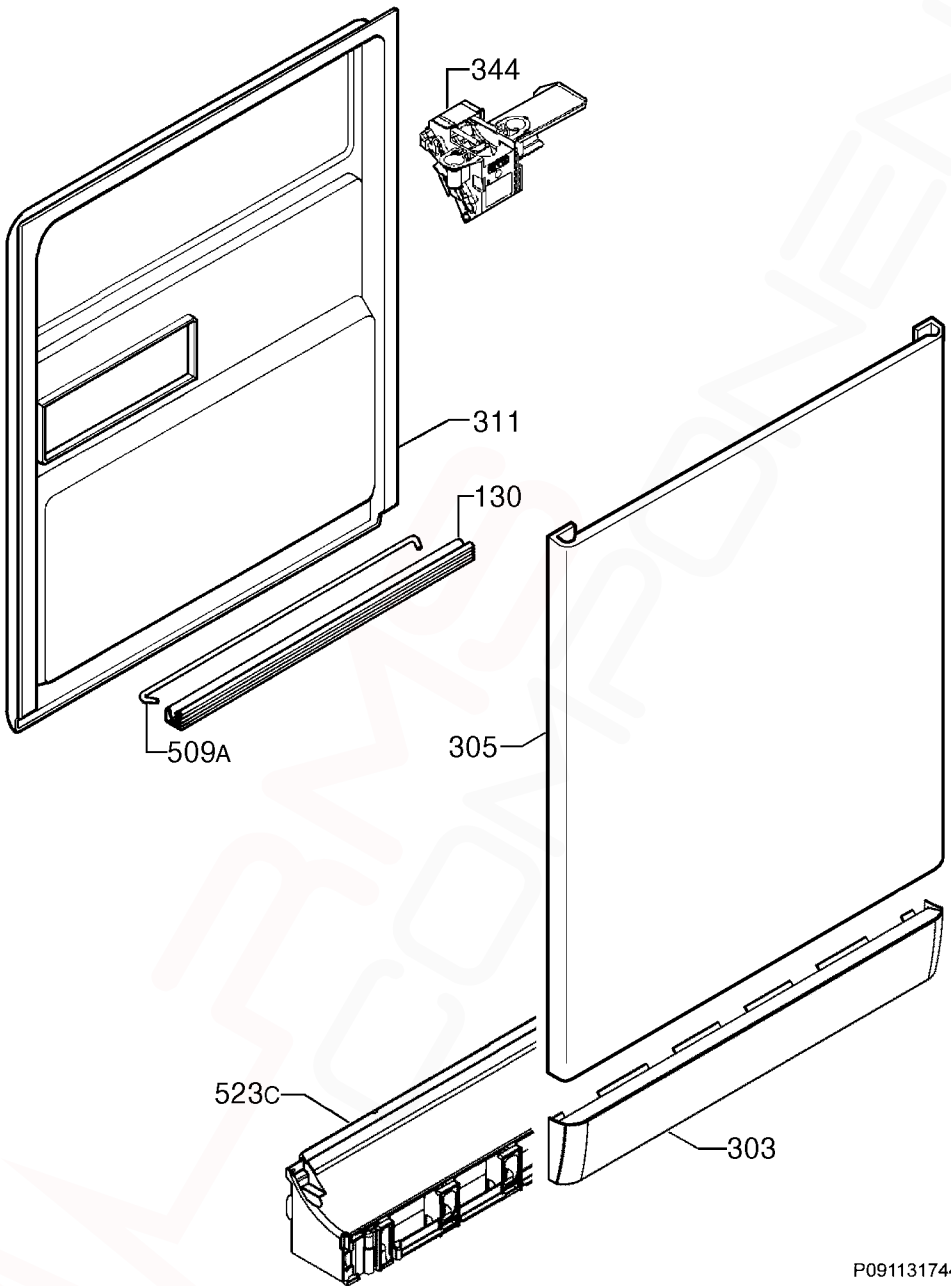
## ***DOMESTIC HOUSEHOLD DISHWASHER***

CONTENTS	PAGE Nº
<b>CABINET and BASE ASSEMBLY</b>	<b>2 &amp; 3</b>
<b>DOOR ASSEMBLY</b>	<b>4 &amp; 5</b>
<b>ELECTRICAL COMPONENTS</b>	<b>6 &amp; 7</b>
<b>PUMP, SUMP and HYDRAULIC SYSTEM</b>	<b>8 &amp; 9</b>
<b>CONTROL PANEL and WORK TOP ASSEMBLY</b>	<b>10 &amp; 11</b>
<b>BASKET ASSEMBLY</b>	<b>12 &amp; 13</b>
<b>AFTER MARKET ACCESSORIES</b>	<b>14</b>
<b>WIRING DIAGRAM, LEGEND &amp; CIRCUIT DIAGRAM</b>	<b>15 - 17</b>

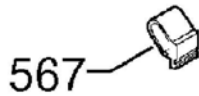
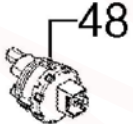
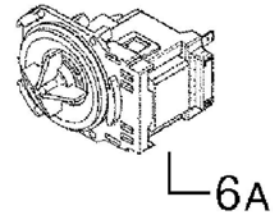
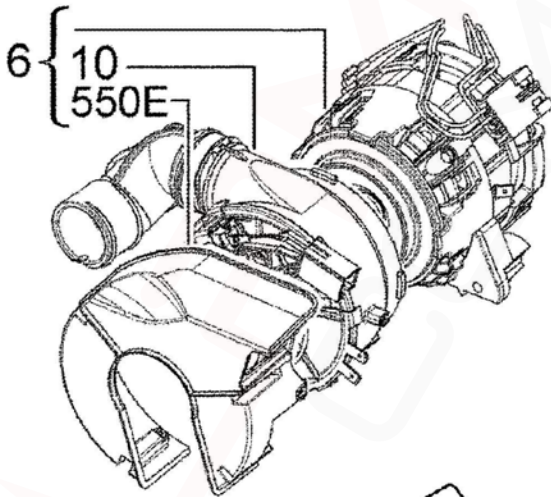
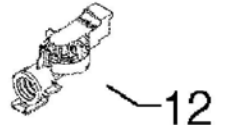
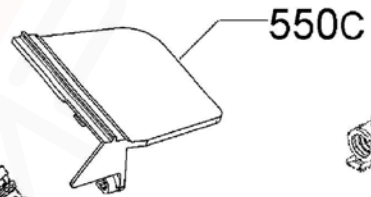
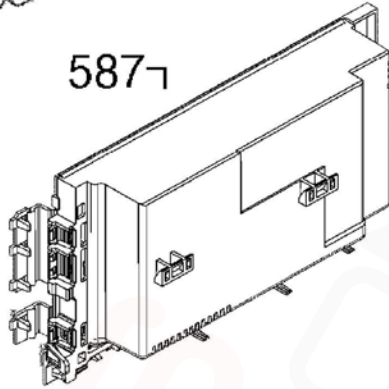
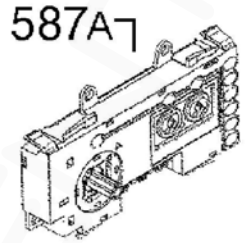
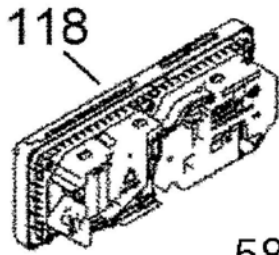
**NOTE: In Parts Listings****N.I. = Not Illustrated**  
**N.P.A. = No Part Available**  
**N.P.N. = Not Used on this Model****MODEL:****DSF6105X****PNC:****911519182 04**



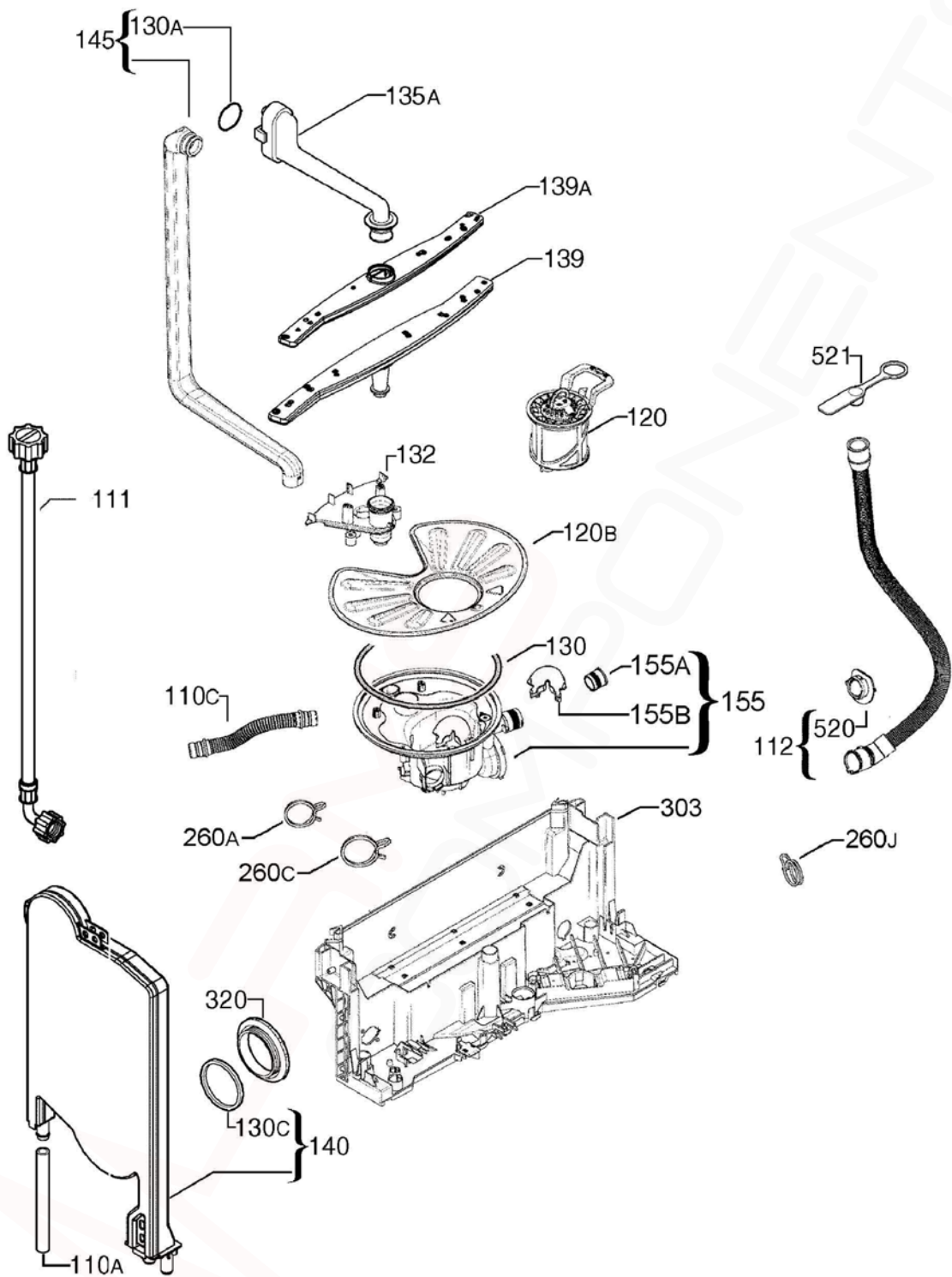
ITEM	PART N°	DESCRIPTION	QTY
130A	<b>1524445-01/0</b>	GASKET DOOR 17300mm	1
257	<b>N.P.A.</b>	COUNTER WEIGHT 2.2Kg	-
301	<b>140000527014</b>	TRAY BOTTOM SPILLAGE	1
301A	<b>4055250858</b>	KIT OVERFLOW HOSE	1
302	<b>140000750012</b>	COVER ELEC CONTROL BOX	1
308	<b>4055325056</b>	KIT HINGE DOOR LH/RH	1
322	<b>1560799114</b>	BRACE FRONT UPPER	1
322A	<b>1170350043</b>	BRACE CROSSBAR UPPER REAR	1
322B	<b>140000212039</b>	BRACE CROSSBAR FRONT LOWER	1
326	<b>1170380610</b>	PANEL SIDE LEFT - SILVER	1
326A	<b>1170380719</b>	PANEL SIDE RIGHT - SILVER	1
330	<b>1520664-10/1</b>	FOOT ADJUSTABLE x 36mm LONG	2
330A	<b>8075188014</b>	FOOT ADJUSTABLE M8 x 48mm LONG	2
344	<b>1522344-05/8</b>	LATCH DOOR LOCK	1
505	<b>1526715410</b>	TRIM TUB BLACK	1
521D	<b>1526576-00/2</b>	COVER LATCH HOLE	1
523	<b>4055260790</b>	SUPPORT ROLLER KIT (PKT 4)	1
523B	<b>1118814-00/1</b>	BRACKET STIFFENING	4
541	<b>1526417-00/9</b>	CLAMP HOSE	1
550B	<b>1522345071</b>	COVER WIRING PROTECTION	1
552	<b>140003656026</b>	RAIL BASKET UPPER	2
567	<b>1523236-03/0</b>	NUT SPEED CLIP	1
597	<b>1520479419</b>	STOP BASKET UPPER FRONT D/GREY	2
597A	<b>6461234061</b>	STOP BASKET UPPER REAR D/GREY	2



<b>ITEM</b>	<b>PART N°</b>	<b>DESCRIPTION EX. P09113174465</b>	<b>QTY</b>
130	1527401-00/2	GASKET DOOR LOWER BLK x 550mm LONG	1
303	8070407013	PLINTH INOX	1
305	1561221456	PANEL OUTER DOOR INOX	1
311	140025959028	DOOR INNER INOX 577x 617	1
344	1113150120	LATCH DOOR LOCK	1
509A	1520419-14/2	TIE HINGE	
523C	1170156-03/6	HOLDER PLINTH	1

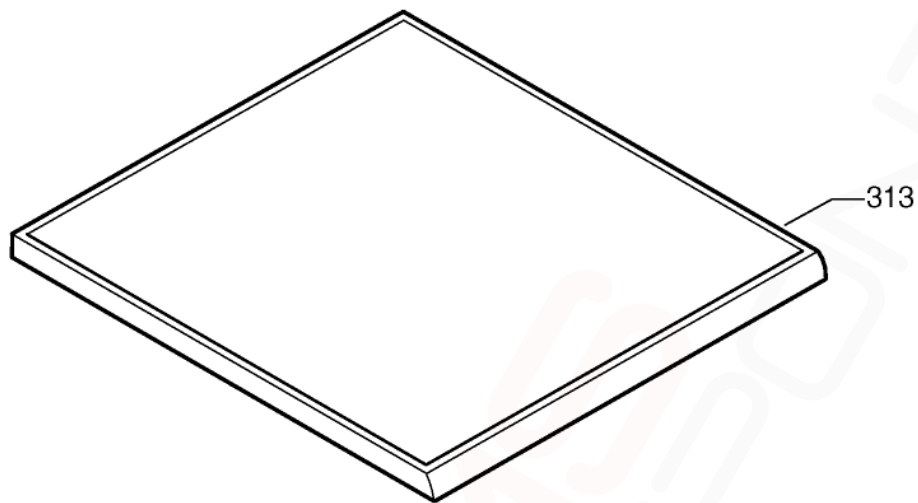


<b>ITEM</b>	<b>PART N°</b>	<b>DESCRIPTION Ex. P09113207752</b>	<b>QTY</b>
5	140001158017	VALVE FILL 2.5L/MIN	1
6	140002106056	PUMP RE-CIRC/HEATER COMP 1800W	1
6A	140000443030	PUMP DRAIN 50Hz	1
10	140002162042	HEATER WITH O-RING 230V/1800W	1
11A	1115927012	CAPAC 3UF MOTOR DISHWASHER	1
12	140000554067	SWITCH PRESSURE	1
48	140000401012	SENSOR TEMPERATURE TURBIDITY	1
118	1113330128	DISPENSER DETERGENT	1
506	140000565048	SWITCH & FLOAT ASSY	1
550C	8080890018	COVER MOTOR DRIP PREVENTION	1
550E	140002173015	COVER HEATER	1
567	1171934019	SUPPORT BRACKET MOTOR RUBBER	2
587	973911519181045	BOARD PC PROGRAMMED, PB300	1
587A	140000423487	PCB USER INTERFACE EDW500	1
N.I.	140001945033	CORD SERVICE AU 2.15M	1
N.I.	8074849012	HARNESS PCB HEATER	1
N.I.	8088212090	HARNESS PCB PUMP (A)	1
N.I.	8088471050	HARNESS PCB DOOR (B)	1



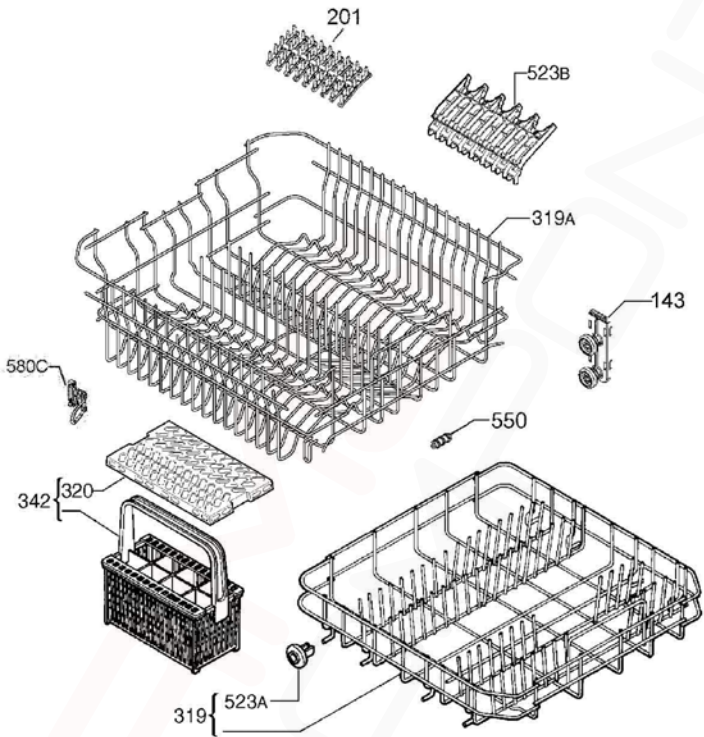


ITEM	PART N°	DESCRIPTION	Ex. P09113200077	QTY
110A	1526815-10/3	TUBE AIR CHAMBER		1
110C	140000059034	HOSE SUMP TO WATER SOFT x370mm		1
111	1400000234030	HOSE FEEDER x 1500mm LONG		1
112	140010997017	HOSE DRAIN x 2230mm		1
120	8075472178	FILTER DRAIN ASSEMBLY - FINE		1
120B	1119209045	FILTER FLAT		1
130	1119186003	O-RING SUMP		1
130A	1523119-01/2	SEAL CHANNEL DRAINAGE		1
130C	50659231-00/0	SEAL AIR CHAMBER		1
132	1119158176	SUPPORT SPRAY ARM LOWER DRK GR		1
135A	1561425370	CHANNEL FEED UPPER SPRAYARM		1
139	140000584072	SPRAY ARM LOWER DARK GREY		1
139A	1118949526	SPRAY ARM UPPER DARK GREY		1
140	1170481764	CONTAINER CUP SMALL		1
145	140000740021	TUBE MANIFOLD INNER DARK GREY		1
155	140000494298	SUMP WATER ASSEMBLY / AIR TRAP		1
155A	140000536015	VALVE NON-RETURN FLAP SUMP		1
155B	1119177010	TRAP SUMP PUMP DRAIN		1
260A	8078689026	CLAMP CIRC PUMP FLOW REGULATOR		1
260C	8078689034	CLAMP CIRCULATION PUMP-SUMP		1
260J	8078689018	CLAMP DRAIN HOSE Ø30mm		1
303	140000531065	BASEMENT REAR		1
320	1526272214	VENT VAPOUR OUTLET		1
520	N.P.A.	CLAMP COLLAR DRAIN HOSE		-
521	N.P.A.	PLUG DRAIN HOSE		-



P09113176040

<b>ITEM</b>	<b>PART N°</b>	<b>DESCRIPTION</b>	<b>EX. P09113176040</b>	<b>QTY</b>
125	1520227016	SPRING KNOB		1
313	1561348218	TOP WORKING ASSEMBLY INOX		1
500	140002446023	KNOB INOX		1
510	8086161174	PANEL CONTROL INOX DSF6105X		1
525A	140002461022	BUTTON PUSH - LEFT INOX		1
525B	140002462020	BUTTON PUSH - RIGHT INOX		1
530	140002463069	HANDLE GREY		1
530A	140002464067	MOUNTING HANDLE GREY		1



<b>ITEM</b>	<b>PART N°</b>	<b>DESCRIPTION</b>	<b>EX. P09113200079</b>	<b>QTY</b>
143	<b>1561285113</b>	ROLLER BASKET ADJUSTMENT FRONT		2
	<b>1561285121</b>	ROLLER BASKET ADJUSTMENT REAR		2
201	<b>1380184109</b>	SUPPORT SPIKES RUBBER - GREY		4
319	<b>1561294057</b>	BASKET DISHWASHER BOTTOM GREY		1
319A	<b>140000152037</b>	BASKET UPPER DISHWASH ASSY		1
320	<b>REFER ITEM 342</b>	GRATE CUTLERY BASKET DK GREY		-
342	<b>ACC107</b>	BASKET ASSY CUTLERY GREY		1
523A	<b>50286965-00/4</b>	ROLLER KIT LOWER (PKT 8)		1
523B	<b>140001199052</b>	SUPPORT CUP GREY		4
550	<b>8070264018</b>	BUFFER BASKET UPPER		2
580C	<b>140018976013</b>	HOOK BASKET UPPER DISPENSER		1

# DISHWASHER ACCESSORY COMPONENTS - DISHLEX



ITEM	PART N°	DESCRIPTION
1	ACC017	Scalex Plus Descaler Sachet 75gm
2	ACC100	Detergent Dishwasher 1kg
3	ACC102	Rinse Aid Additive 500mls
4	ACC103	Descaler Powder 350g <b>(Dangerous Goods rules apply, min order Qty of 12)</b>
5	ACC002	Dishwasher Salt 1kg Pack
6	ACC088	Support Spikes Rubber – Grey
N.I.	ACC107	Basket Cutlery Universal
N.I.	ES5323K	Hose Drain Extension Kit (1M Length)
N.I.	0571400142	Hose Drain Extension Straight Cuffs (2M Length)

**P0000300001847**

BASE BOARD	Main electronic board
CAPACITOR	Capacitor
DISPENSER	Detergent dispenser
DOOR LOCK	Door lock
DRAIN PUMP	Drain pump
HEATER	Heating element
INLET VALVE	Inlet valve
INPUT BOARD	User interface (display)
LEAKAGE SWITCH	Anti-flooding device
MAIN SWITCH	Main switch
NTC/TURB. SENSOR	Turbidity sensor
POWER CORD	Power supply
PREASSURE SENSOR	Pressure Sensor
REG. VALVE	Regeneration valve
RINSE AID	Resin conditioning water switch
SALT AID	Salt
WASH PUMP	Washing pump
GN/YE	Green/yellow
RD	Red
BU	Blue
BR	Brown
BK	Black