

Electrolux

ELECTROLUX HOME PRODUCTS PTY LTD
ABN 51 004 762 341

Technical Publication N° DW406

Issue: 1
Date: 11/14

DISHLEX
HOUSEHOLD DISHWASHER
12 PLACE SETTING

MODEL:

DSF6105X
PNC 911519182 00

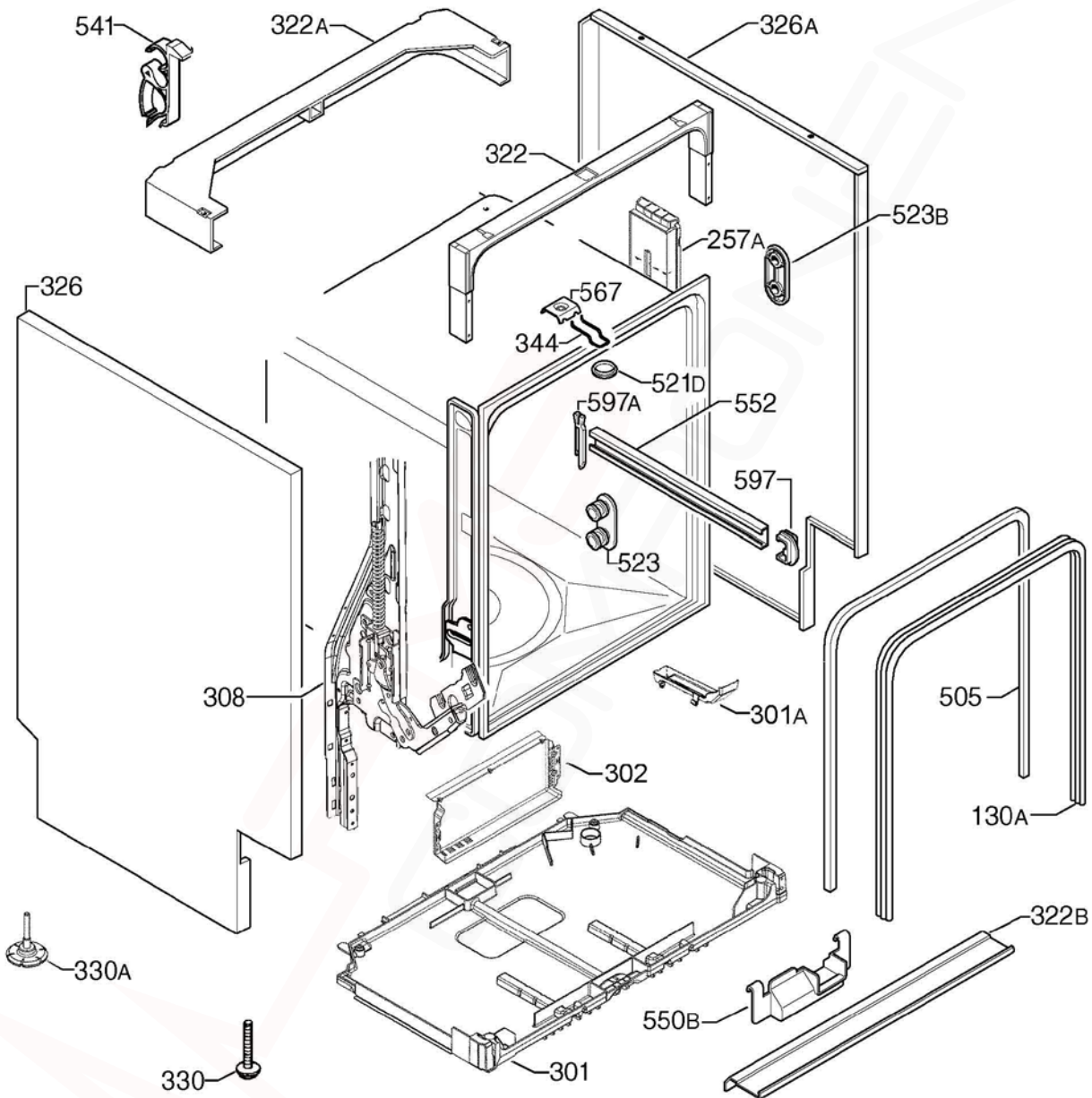
| | |
|-------------------------------|--------------|
| VARIANT CHANGE SUMMARY | |
| 00 | INTRODUCTION |

| | |
|-------------------------|----------|
| Release Date: | |
| DSF6105X / 911519182 00 | Oct 2014 |

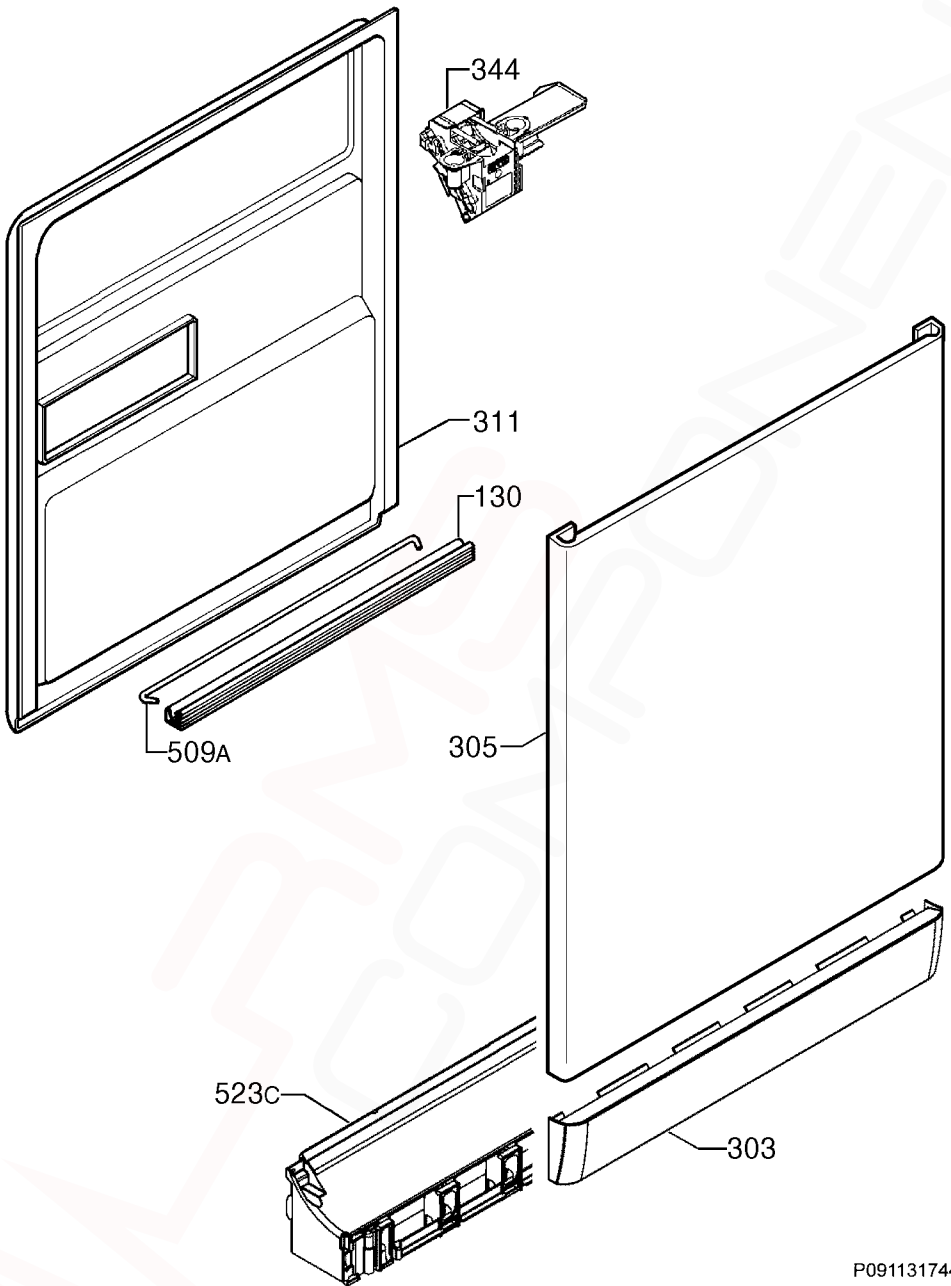
| CONTENTS | PAGE N° |
|---|--------------------|
| VARIANT CHANGE SUMMARY and RELASE DATE | 2 |
| CONTENTS | 3 |
| CABINET and BASE ASSEMBLY | 4 & 5 |
| DOOR ASSEMBLY | 6 & 7 |
| ELECTRICAL COMPONENTS | 8 & 9 |
| PUMP, SUMP and HYDRAULIC SYSTEM | 10 & 11 |
| CONTROL PANEL and WORK TOP ASSEMBLY | 12 & 13 |
| BASKET ASSEMBLY | 14 & 15 |
| ACCESSORIES | 16 |
| WIRING DIAGRAM, LEGEND & CIRCUIT DIAGRAM | 17 - 19 |

NOTE: In Parts Listings

N.I. = Not Illustrated
N.P.A. = No Part Available
N.P.N. = Not Used on this Model



| ITEM | PART N°. | DESCRIPTION EX. P09113178362 | QTY |
|-------------|---------------------|--|------------|
| 130A | 1171265026 | Gasket Door Outer Ø1730 | 1 |
| 257A | 140000115018 | Counterweight Side Dishwasher | 1 |
| 301 | 140000527014 | Tray Bottom Spillage | 1 |
| 301A | 4055250858 | Kit Overflow Hose | 1 |
| 302 | 140000750012 | Cover Electronic PCB - Metal | 1 |
| 308 | 4055161352 | Kit Hinge Left-Right | 1 |
| 322 | 1560799114 | Brace Front Upper Zinc-Plated | 1 |
| 322A | 1170350-01/9 | Brace Rear Upper | 1 |
| 322B | 140000212013 | Brace Front Lower | 1 |
| 326 | 1170380610 | Panel Side Left - Silver | 1 |
| 326A | 1170380719 | Panel Side Right - Silver | 1 |
| 330 | 1520664-10/1 | Foot Adjustable Ø36 | 2 |
| 330A | 8075188014 | Foot Adjustable Ø48mm | 2 |
| 344 | 1522344-05/8 | Latch Door Lock | 1 |
| 505 | 1526715410 | Trimming Tub Black | 1 |
| 521D | 1526576-00/2 | Hole Cover Latch | 1 |
| 523 | 50299970009 | Wheel Support Kit Dark Grey (4 Pieces) | 1 |
| 523B | 1118814-00/1 | Stiffening Support | 4 |
| 541 | N.P.A. | Hose Clamp | - |
| 550B | 1522345071 | Cover Wiring Protection | 1 |
| 552 | 140003656026 | Rail Basket Upper Complete | 2 |
| 567 | 1523236-03/0 | Clip Speed (Plaque) | 1 |
| 597 | 1520479419 | Stop Basket Front Dark Grey | 2 |
| 597A | 6461234061 | Stop Basket Back Dark Grey | 2 |



P09113187599

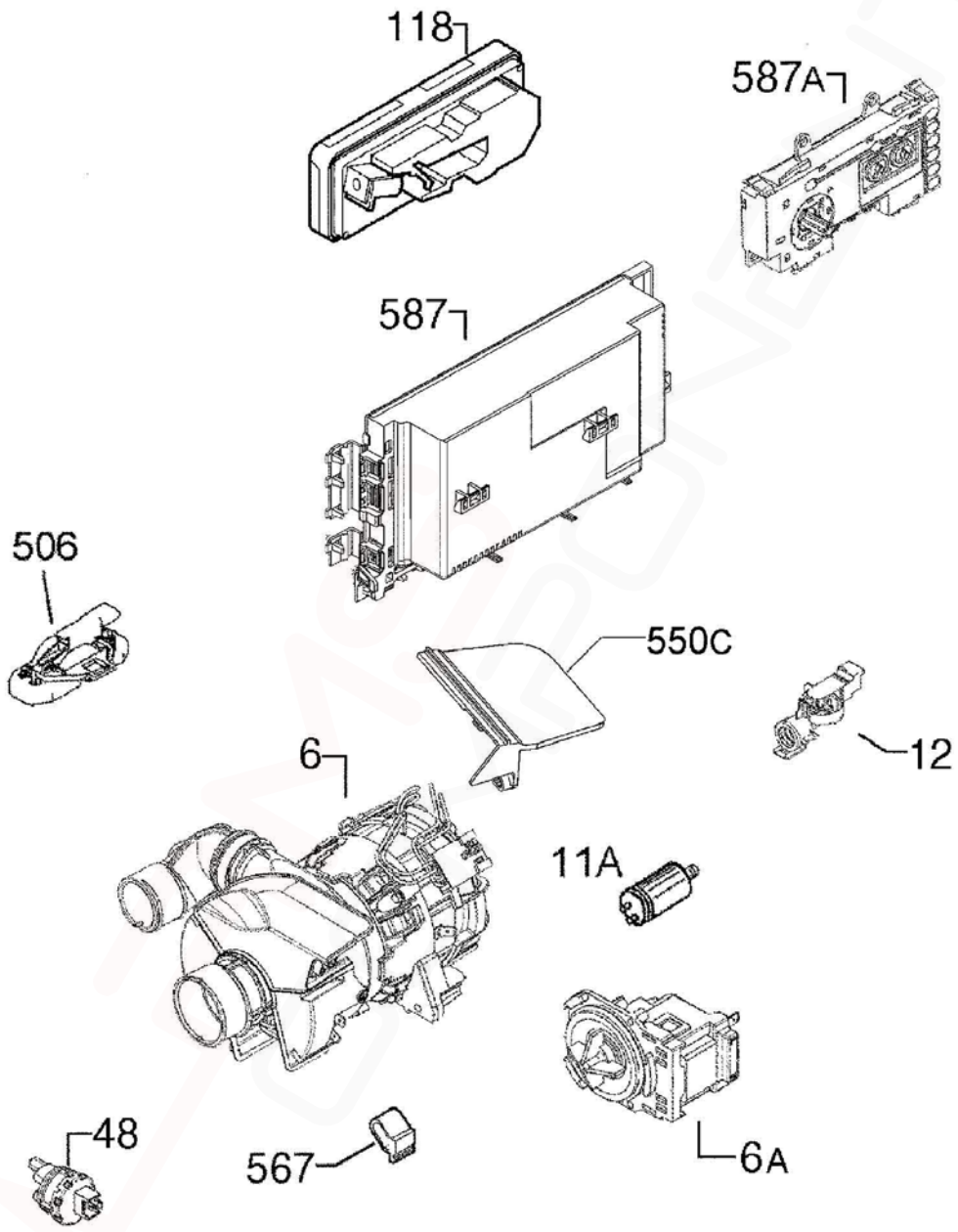
MODELS:

DSF6105X

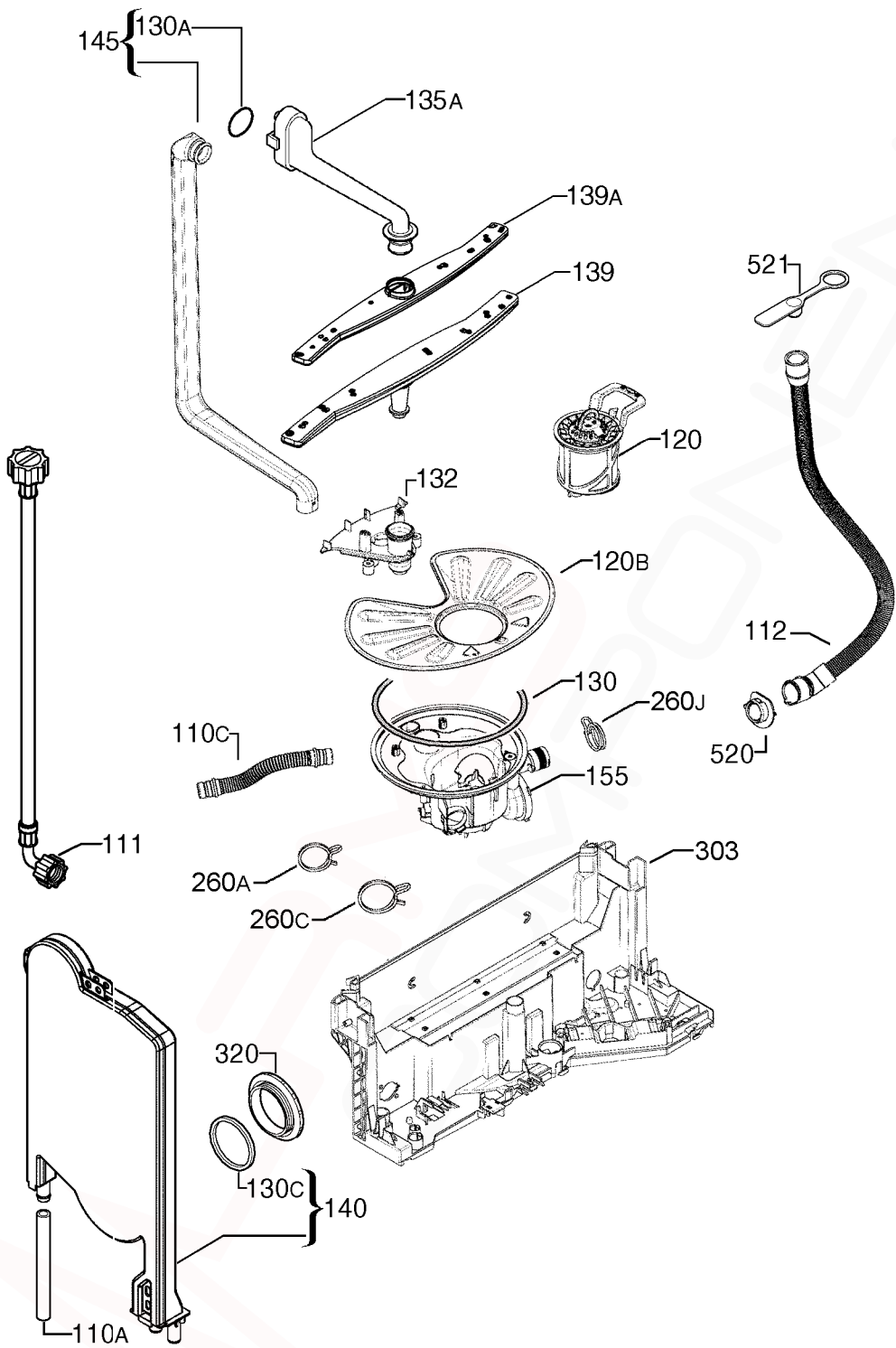
PNC 911519182 00

**EX. VIEW P09113174465
DOOR ASSEMBLY
ASSEMBLY**

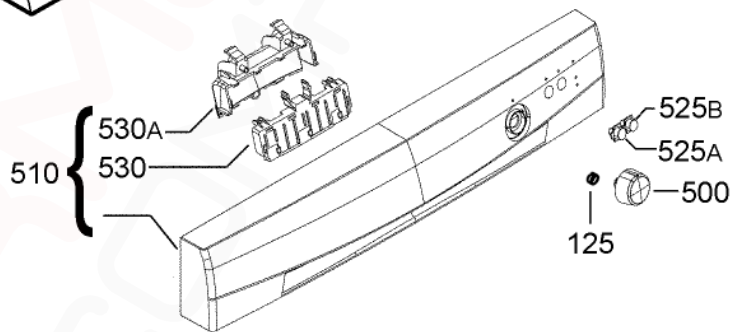
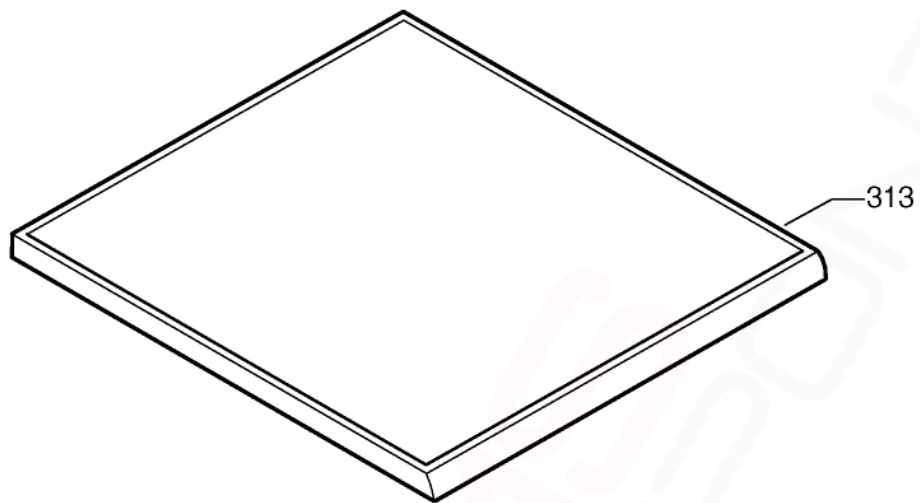
| ITEM | PART No. | DESCRIPTION | EX. P09113174465 | QTY |
|-------------|---------------------|--------------------------------|-------------------------|------------|
| 130 | 1527401-00/2 | Gasket Door Lower Black x550mm | | 1 |
| 303 | 8070407013 | Plinth Inox | | 1 |
| 305 | 1561221365 | Panel Door Outer - Inox | | 1 |
| 311 | 1170189078 | Panel Door Inner | | 1 |
| 344 | 1113150120 | Latch Door Complete | | 1 |
| 509A | 1520419-14/2 | Tie Hinge | | 1 |
| 523C | 1170156-03/6 | Holder Plinth - Dark Grey | | 1 |



| ITEM | PART N°. | DESCRIPTION | EX. P09113183460 | QTY |
|-------------|------------------------|------------------------------------|-------------------------|------------|
| 5 | 140001158017 | Valve Fill 2.5Lt/min | | 1 |
| 6 | 140002106015 | Pump Circulation Heater Comp ASYNC | | 1 |
| 6A | 140000443030 | Pump Drain 50Hz | | 1 |
| 11A | 1115927012 | Capacitor Motor 3µf | | 1 |
| 12 | 140000554018 | Switch Pressure | | 1 |
| 48 | 140000401012 | Sensor Temperature Turbidity | | 1 |
| 118 | 1113330128 | Dispenser Detergent C/R | | 1 |
| 506 | 140000565048 | Switch Float Assembly | | 1 |
| 567 | 1171934019 | Bracket Motor Buffer | | 2 |
| 587 | 973911519181003 | Board Configured Electronic PB200 | | 1 |
| 587A | 140000423164 | Board User Interface Amber EDW500 | | 1 |
| | | | | |
| N.I. | 8080890018 | Tray Protection Motor | | 1 |
| N.I. | 140001945033 | Cord Service AU 2.15m | | 1 |
| N.I. | 8074849012 | Harness PCB Heater | | 1 |
| N.I. | 8091580053 | Harness PCB Door | | 1 |
| N.I. | 8091583040 | Harness PCB Pump | | 1 |



| ITEM | PART N°. | DESCRIPTION EX. P09113176038 | QTY |
|------|---------------|---------------------------------------|-----|
| 110A | 1526815-10/3 | Tube Container Cup Fill Valve x 280mm | 1 |
| 110C | 140000059034 | Hose Sump Water Softener x 370mm | 1 |
| 111 | 1400000234030 | Hose Feeder x 1500mm | 1 |
| 112 | 140000599013 | Hose Drain x 2230mm | 1 |
| 120 | 8075472012 | Filter Drain Assembly | 1 |
| 120B | 1119209045 | Filter Flat | 1 |
| 130 | 1119186003 | Sump O-Ring | 1 |
| 130A | 1523119-01/2 | Seal Channel Drainage | 1 |
| 130C | N.P.A. | Seal Round Container Cup | - |
| 132 | 1119158135 | Support Spray Arm Lower | 1 |
| 135A | 1561425370 | Duct Light Grey x 229.6mm | 1 |
| 139 | 140000584072 | Spray Arm Lower Light Grey | 1 |
| 139A | 1118949526 | Spray Arm Upper Light Grey x 450mm | 1 |
| 140 | 1170481731 | Container Cup Small | 1 |
| 145 | 140000740021 | Manifold Inner | 1 |
| 155 | 140000494017 | Sump Assembly | 1 |
| 260A | 8078689026 | Clamp Circ Pump Flow Regulator Ø36mm | 1 |
| 260C | 8078689034 | Clamp Circulation Pump Sump Ø45mm | 1 |
| 260J | 8078689018 | Clamp Drain Hose Ø30mm | 1 |
| 303 | 140000531032 | Basement Rear | 1 |
| 320 | 1526272214 | Vent Grill Dark Grey | 1 |
| 520 | N.P.A. | Flange Discharge Hose Ø20mm | - |
| 521 | N.P.A. | Stopper Drainage Hose | - |
| N.I. | 140000536015 | Valve Non-Return Flap Sump Ø23.2mm | 1 |



P09113176040

P09113187602

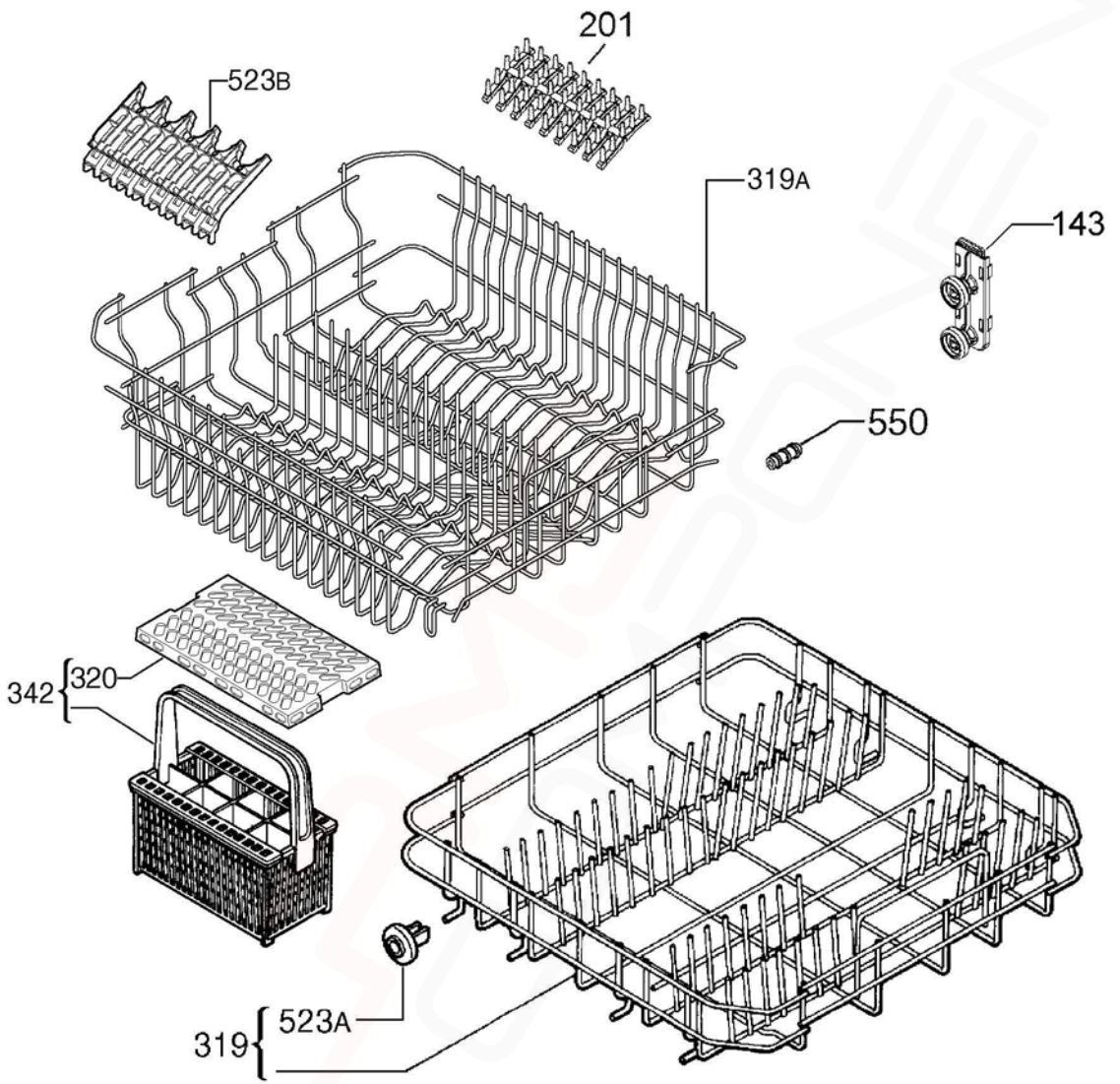
MODELS:

DSF6105X

PNC 911519182 00

**EX. VIEW P09113176040
WORKTOP and CONTROL
PANEL ASSEMBLY**

| ITEM | PART N°. | DESCRIPTION | EX. P09113176040 | QTY |
|-------------|---------------------|---------------------------------|-------------------------|------------|
| 125 | 1520227016 | Spring Knob | | 1 |
| 313 | 1561348218 | Work Top Inox | | 1 |
| 500 | 140002446023 | Knob Inox | | 1 |
| 510 | 8086161042 | Panel Control Inox DSF6105X | | 1 |
| 525A | 140002461022 | Button Push Left Inox | | 1 |
| 525B | 140002462020 | Button Push Right Inox | | 1 |
| 530 | 140002463069 | Handle Grey | | 1 |
| 530A | 140002464067 | Cover Handle Grey | | 1 |
| | | | | |
| N.I. | 5190530112 | Screw Switch Housing 3.5x13 TTL | | 2 |



P09113187603

MODELS:**DSF6105W****PNC 911519181 00****EX. VIEW P09113183463
BASKET ASSEMBLY**

| ITEM | PART N°. | DESCRIPTION | EX. P09113183463 | QTY |
|-------------|----------------------|------------------------------------|-------------------------|------------|
| 143 | 1561285113 | Wheel Kit Basket Upper Front | | 2 |
| | 1561285121 | Wheel Kit Basket Upper Rear | | 2 |
| 201 | 1380184109 | Support Spikes Rubber Grey | | 2 |
| 319 | 1561446293 | Basket Dishwasher Bottom Dark Grey | | 1 |
| 319A | 140000152037 | Basket Dishwasher Upper Light Grey | | 1 |
| 342 | ACC107 | Basket Cutlery Universal | | 1 |
| 523A | 50286965-00/4 | Wheel Kit Basket Lower (8 Pieces) | | 1 |
| 523B | 140001199086 | Support Cup Grey | | 2 |
| 550 | 8996461804602 | Buffer Rubber Dishwasher Upper | | 2 |
| N.I. | 1561218031 | Hook Dispenser Upper Basket | | 1 |

**DISHWASHER
ACCESSORY COMPONENTS**

EX. VIEW DRAWING 8155-8159



| ITEM | PART N° | DESCRIPTION | Ex. |
|------|---------|---|-----|
| 1 | ACC017 | Scalex Plus Descaler Sachet 75gm | |
| 2 | ACC100 | Detergent Dishwasher 1kg | |
| 3 | ACC102 | Rinse Aid Additive 500mls | |
| 4 | ACC103 | Descaler Powder 350g (Dangerous Goods rules apply, min order Qty of 12) | |
| 5 | ACC002 | Dishwasher Salt 1kg Pack | |

LEGEND FOR Wiring Diagram A00185906a & A00185906b

| Item | Description |
|------------------|---------------------------------|
| BASE BOARD | Main electronic board |
| BOF/BH | Indication of operation |
| CAPACITOR | Capacitor |
| DISPENSER | Detergent dispenser |
| DOOR LOCK | Door lock |
| DRAIN PUMP | Drain pump |
| FLOW CONTROL | Flow meter |
| HEATER | Heating element |
| INLET VALVE | Inlet valve |
| INPUT BOARD | User interface (display) |
| LEAKAGE SWITCH | Anti-flooding device |
| MAIN SWITCH | Main switch |
| NTC/TURB. SENSOR | Turbidity sensor |
| POWER CORD | Power supply |
| PREASSURE SENSOR | Pressure Sensor |
| REG. VALVE | Regeneration valve |
| RINSE AID | Resin conditioning water switch |
| SALT AID | Salt |
| WASH PUMP | Washing pump |
| | |
| GN/YE | Green/yellow |
| RD | Red |
| BU | Blue |
| BR | Brown |
| BK | Black |