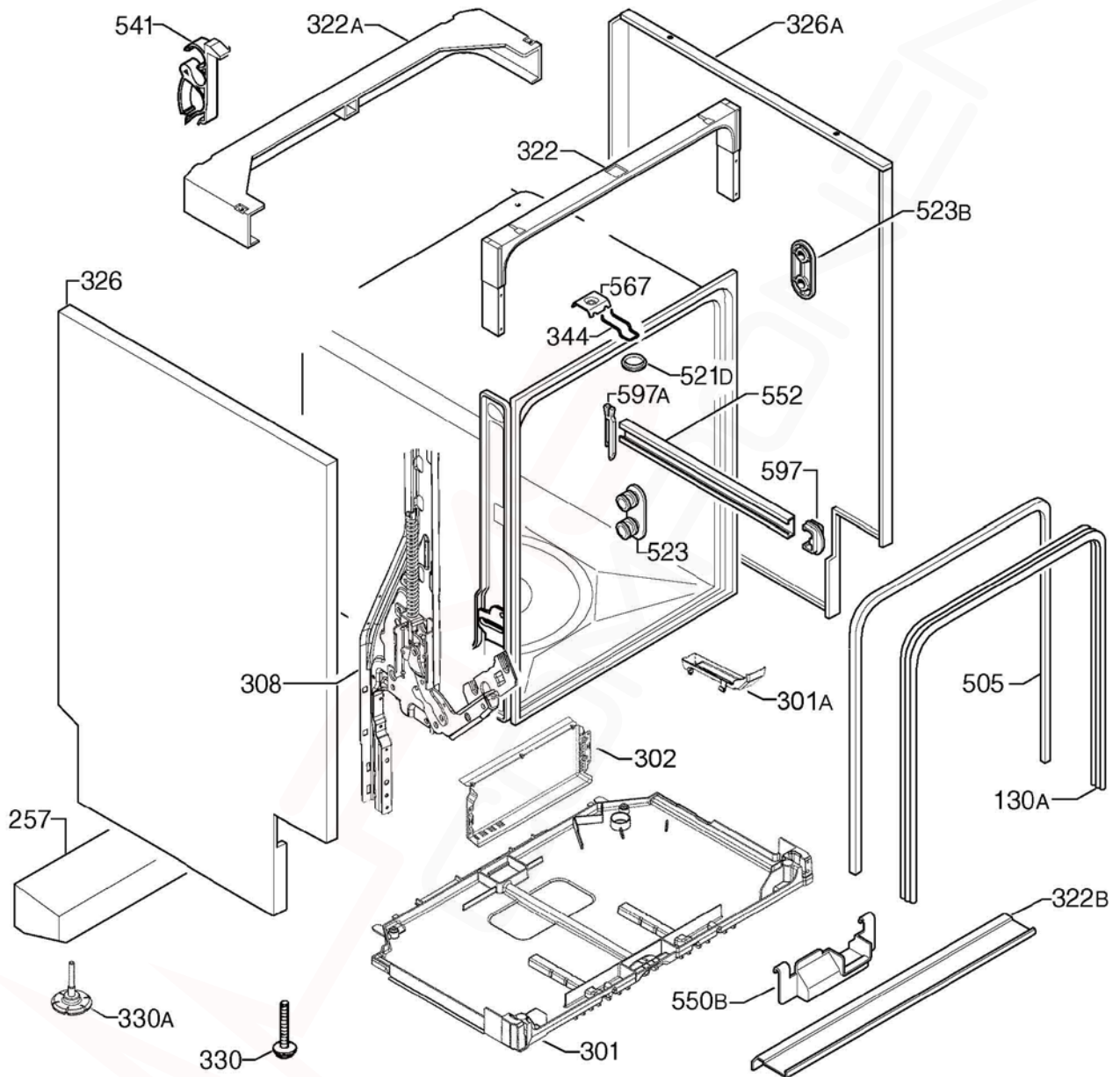


# ***DISHLEX***

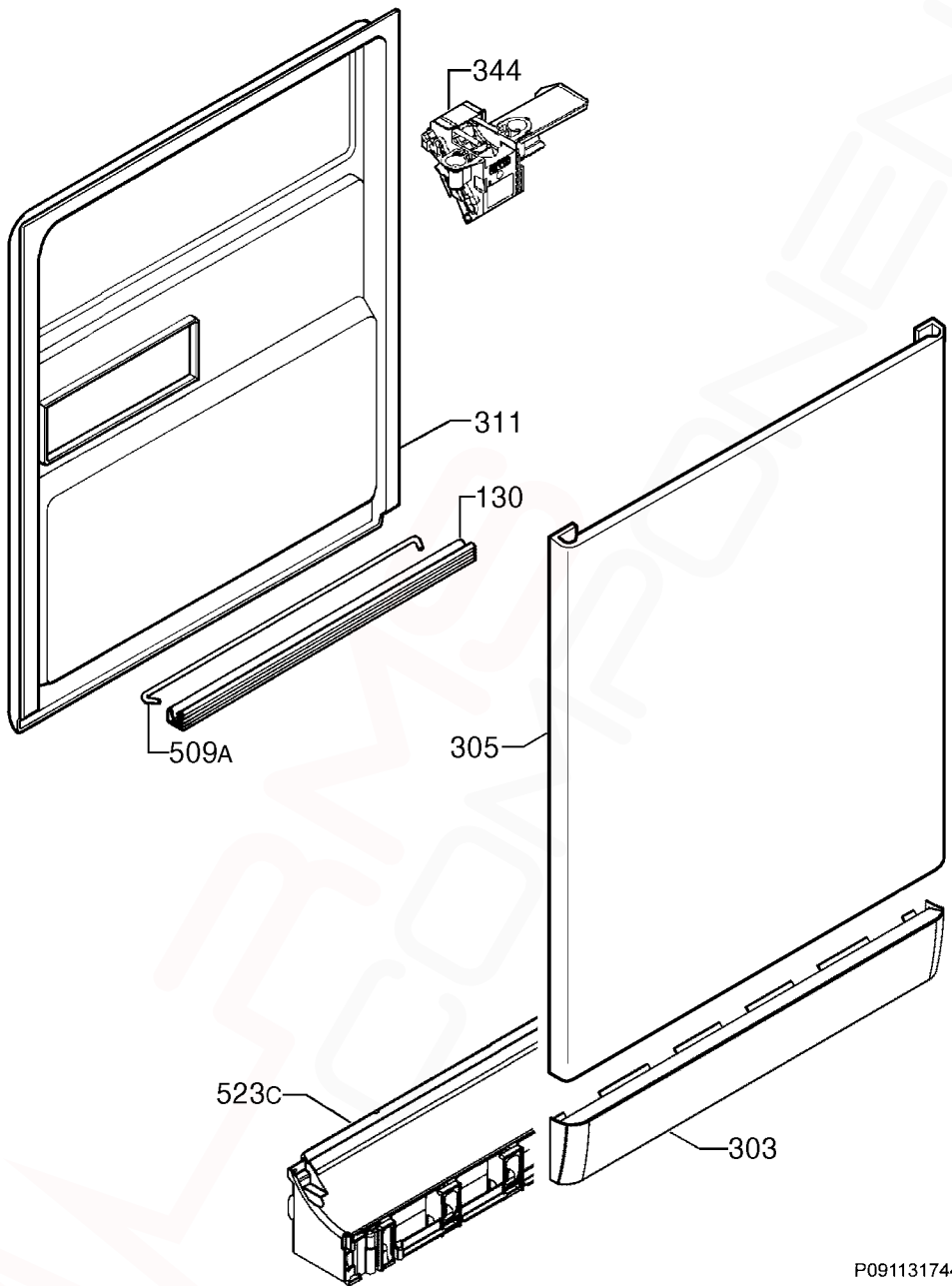
## ***DOMESTIC HOUSEHOLD DISHWASHER***

<b>CONTENTS</b>	<b>PAGE Nº</b>
<b>CABINET and BASE ASSEMBLY</b>	<b>2 &amp; 3</b>
<b>DOOR ASSEMBLY</b>	<b>4 &amp; 5</b>
<b>ELECTRICAL COMPONENTS</b>	<b>6 &amp; 7</b>
<b>PUMP, SUMP and HYDRAULIC SYSTEM</b>	<b>8 &amp; 9</b>
<b>CONTROL PANEL and WORK TOP ASSEMBLY</b>	<b>10 &amp; 11</b>
<b>BASKET ASSEMBLY</b>	<b>12 &amp; 13</b>
<b>AFTER MARKET ACCESSORIES</b>	<b>14</b>
<b>WIRING DIAGRAM, LEGEND &amp; CIRCUIT DIAGRAM</b>	<b>15 - 17</b>

**NOTE: In Parts Listings****N.I. = Not Illustrated**  
**N.P.A. = No Part Available**  
**N.P.N. = Not Used on this Model*****MODEL:******DSF6105W******PNC:******911519181 03******911519181 04***

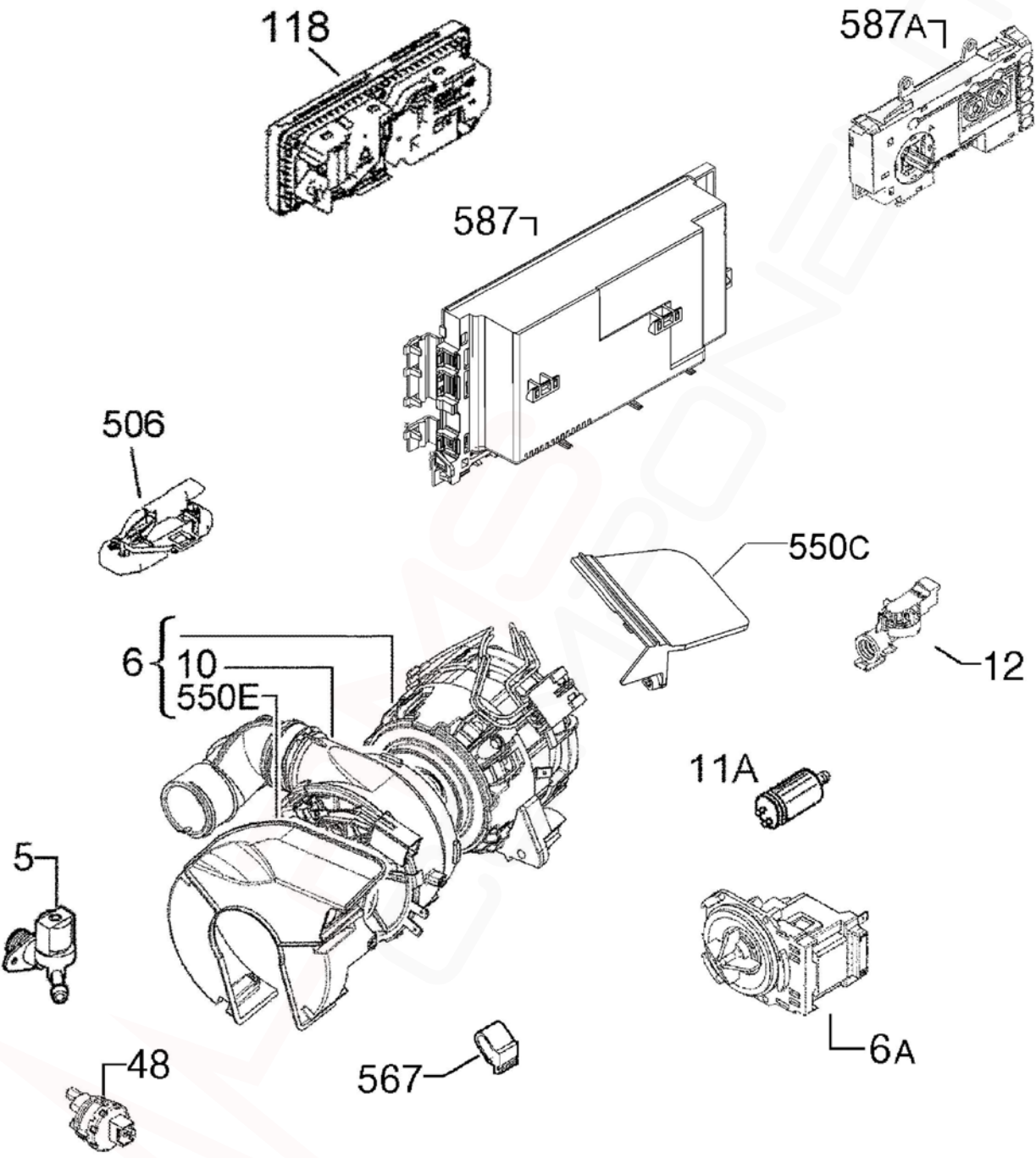


ITEM	PART N°	DESCRIPTION	EX. P09113205015	QTY
130A	<b>1171265026</b>	GASKET DOOR 17300mm		1
257	<b>N.P.A.</b>	COUNTERWEIGHT 2.2kg		-
301	<b>140000527014</b>	TRAY BOTTOM SPILLAGE		1
301A	<b>4055250858</b>	KIT OVERFLOW HOSE		1
302	<b>140000750012</b>	COVER ELEC CONTROL BOX		1
308	<b>4055325056</b>	KIT HINGE DOOR LH/RH		1
322	<b>1560799114</b>	BRACE FRONT UPPER		1
322A	<b>1170350043</b>	BRACE CROSSBAR UPPER REAR		1
322B	<b>140000212039</b>	BRACE CROSSBAR FRONT LOWER		1
326	<b>1170153421</b>	PANEL SIDE LEFT - WHITE		1
326A	<b>1170153520</b>	PANEL SIDE RH - WHITE		1
330	<b>1520664-10/1</b>	FOOT ADJUSTABLE x 36mm LONG		2
330A	<b>8075188014</b>	FOOT ADJUSTABLE M8 x 48mm LONG		2
344	<b>1522344-05/8</b>	LATCH DOOR LOCK		1
505	<b>1526715410</b>	TRIM TUB BLACK		1
521D	<b>1526576101</b>	COVER LATCH HOLE		1
523	<b>4055260790</b>	SUPPORT ROLLER KIT (PKT 4)		1
523B	<b>1118814-00/1</b>	BRACKET STIFFENING		4
541	<b>N.P.A.</b>	CLAMP HOSE		-
550B	<b>1522345071</b>	COVER WIRING PROTECTION		4
552	<b>140003656026</b>	RAIL BASKET UPPER		2
567	<b>1523236-03/0</b>	NUT SPEED CLIP		1
597	<b>1520479419</b>	STOP BASKET UPPER FRONT D/GREY		2
597A	<b>6461234061</b>	STOP BASKET UPPER REAR D/GREY		2

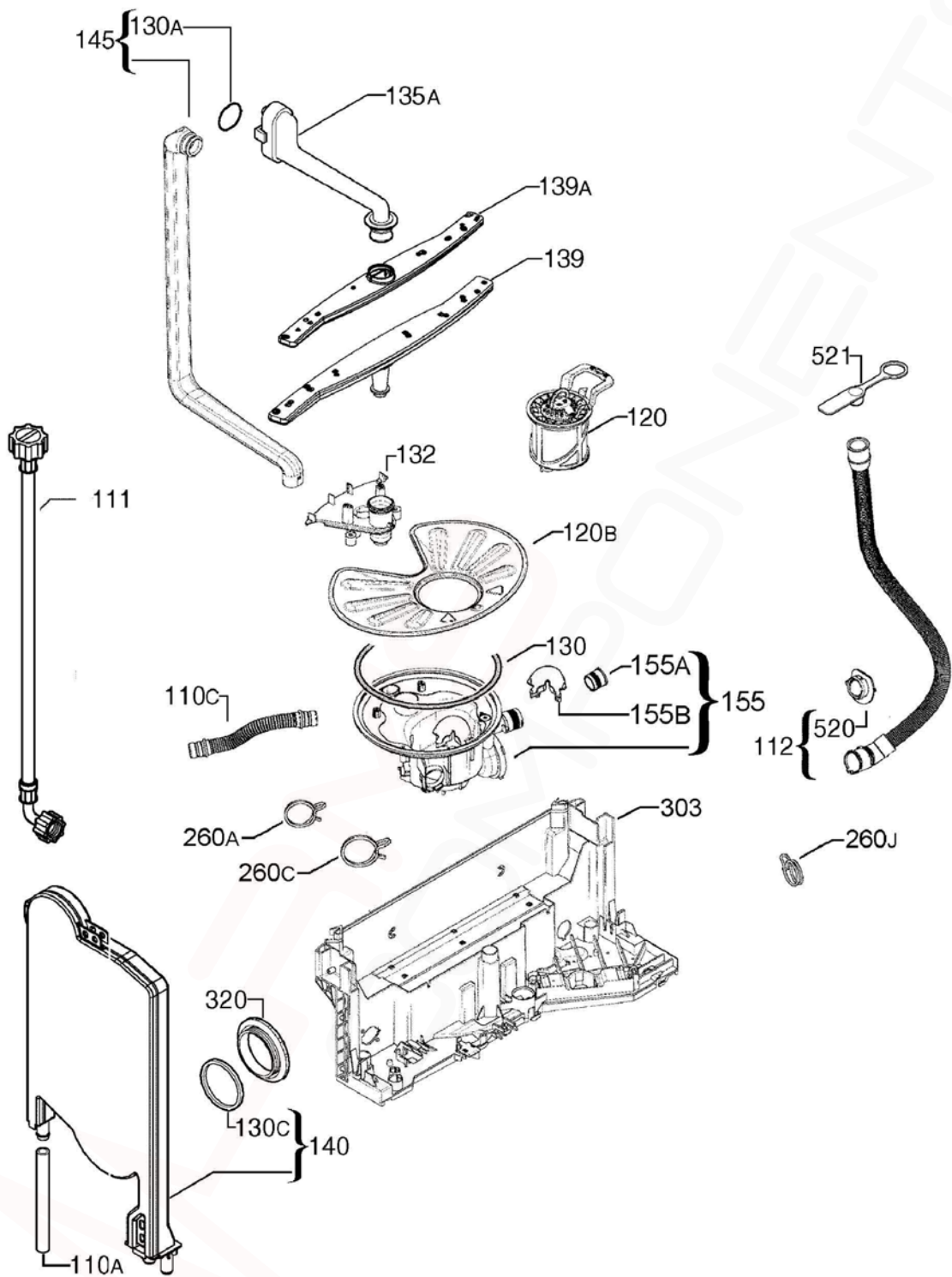


**MODEL: DX6105W****PNC 911519181 03  
911519181 04****EX. VIEW P09113174465  
DOOR COMPLETE  
ASSEMBLY**

<b>ITEM</b>	<b>PART N°</b>	<b>DESCRIPTION</b>	<b>EX. P09113174465</b>	<b>QTY</b>
130	<b>1527401-00/2</b>	GASKET DOOR LOWER BLK x 550mm		1
303	<b>8070407039</b>	PLINTH WHITE		1
305	<b>1561221464</b>	PANEL DOOR OUTER - WHITE		1
311	<b>140025959028</b>	DOOR INNER INOX 577x 617		1
344	<b>1113150120</b>	LATCH DOOR LOCK		1
509A	<b>1520419-14/2</b>	TIE HINGE		1
523C	<b>1170156-03/6</b>	HOLDER PLINTH		1

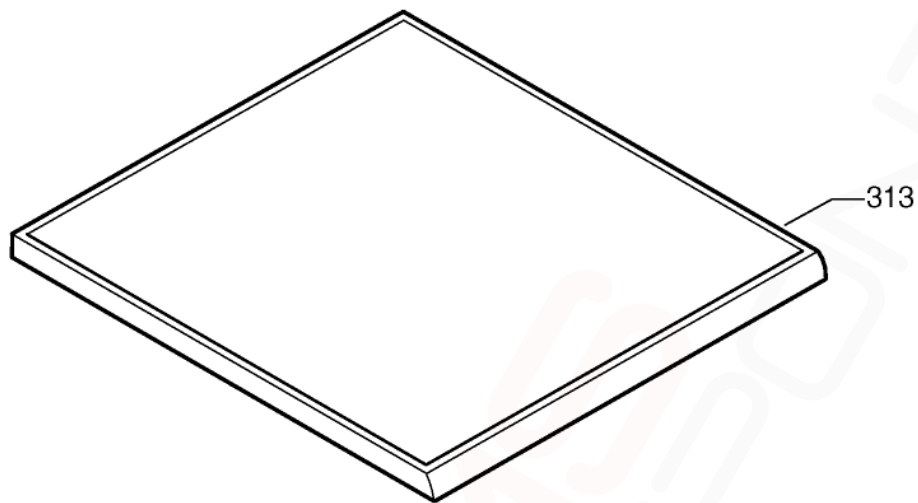


<b>ITEM</b>	<b>PART N°</b>	<b>DESCRIPTION Ex. P09113207752</b>	<b>QTY</b>
5	140001158017	VALVE FILL 2.5L/MIN	1
6	140002106072	PUMP RE-CIRC/HEATER COMP 1800W	1
6A	140000443030	PUMP DRAIN 50Hz	1
10	140002162042	HEATER WITH O-RING 230V/1800W	1
11A	1115927012	CAPAC 3UF MOTOR DISHWASHER	1
12	140000554067	SWITCH PRESSURE	1
48	140000401012	SENSOR TEMPERATURE TURBIDITY	1
118	1113330128	DISPENSER DETERGENT	1
506	140000565048	SWITCH & FLOAT ASSY	1
550C	8080890018	COVER MOTOR DRIP PREVENTION	1
550E	140002173015	COVER HEATER	1
567	1171934019	SUPPORT BRACKET MOTOR RUBBER	2
587	973911519181045	BOARD PC PROGRAMMED, PB300	1
587A	140000423487	PCB USER INTERFACE EDW500	1
N.I.	140001945033	CORD SERVICE AU 2.15M	1
N.I.	8074849012	HARNESS PCB HEATER	1
N.I.	8088212090	HARNESS PCB PUMP (A)	1
N.I.	8088471050	HARNESS PCB DOOR (B)	1





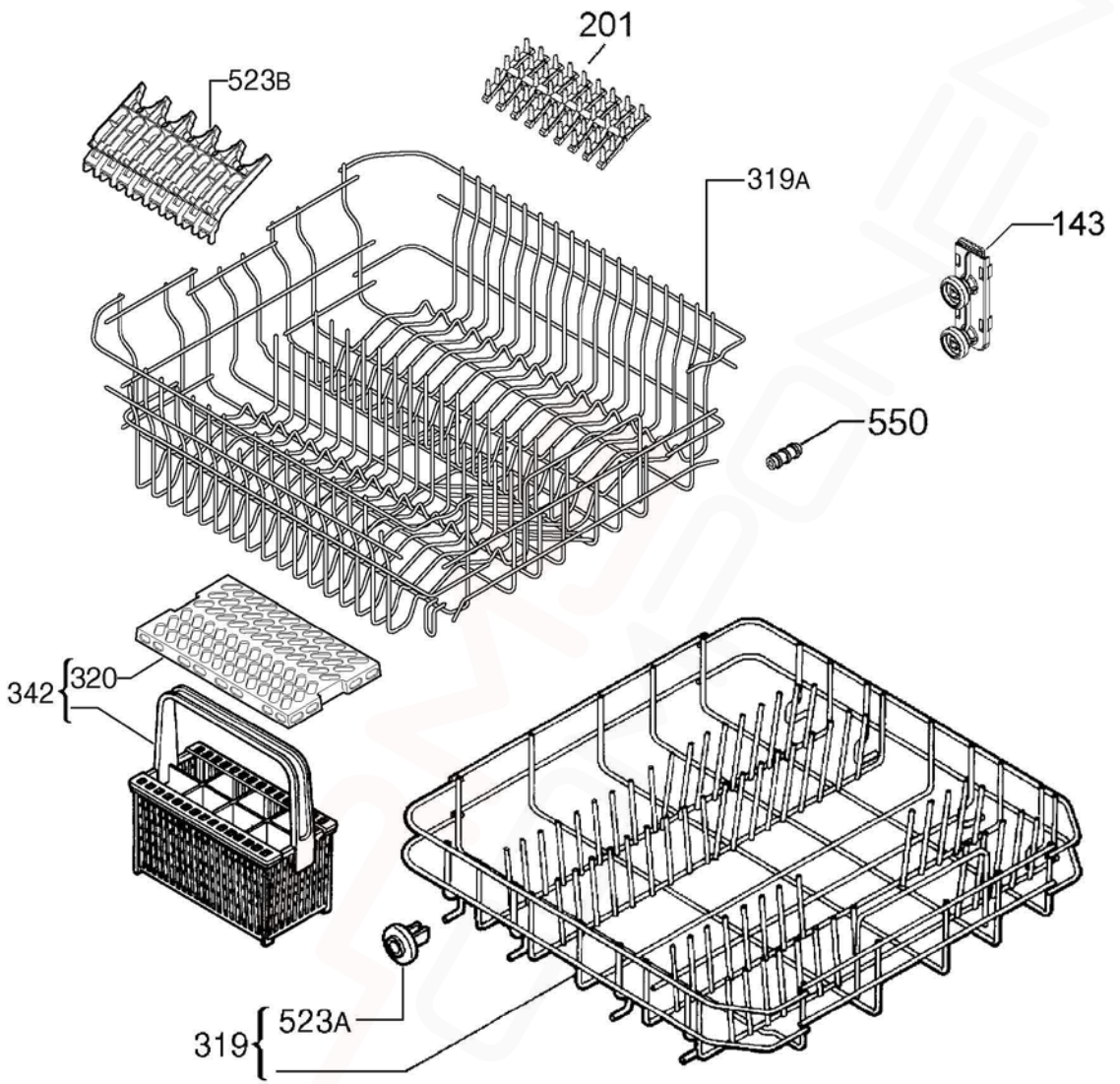
<b>ITEM</b>	<b>PART N°</b>	<b>DESCRIPTION</b>	<b>Ex. P09113200077</b>	<b>QTY</b>
110A	<b>1526815-10/3</b>	TUBE AIR CHAMBER		1
110C	<b>140000059034</b>	HOSE SUMP TO WATER SOFT x370mm		1
111	<b>1400000234030</b>	HOSE FEEDER x 1500mm LONG		1
112	<b>140010997017</b>	HOSE DRAIN x 2230mm		1
120	<b>8075472178</b>	FILTER DRAIN ASSEMBLY - FINE		1
120B	<b>1119209045</b>	FILTER FLAT		1
130	<b>1119186003</b>	O-RING SUMP		1
130A	<b>1523119-01/2</b>	SEAL CHANNEL DRAINAGE		1
130C	<b>50659231-00/0</b>	SEAL AIR CHAMBER		1
132	<b>1119158176</b>	SUPPORT SPRAY ARM LOWER DRK GR		1
135A	<b>1561425370</b>	CHANNEL FEED UPPER SPRAYARM		1
139	<b>140000584072</b>	SPRAY ARM LOWER DARK GREY		1
139A	<b>1118949526</b>	SPRAY ARM UPPER DARK GREY		1
140	<b>1170481764</b>	CONTAINER CUP SMALL		1
145	<b>140000740021</b>	TUBE MANIFOLD INNER DARK GREY		1
155	<b>140000494298</b>	SUMP WATER ASSEMBLY / AIR TRAP		1
155A	<b>140000536015</b>	VALVE NON-RETURN FLAP SUMP		1
155B	<b>1119177010</b>	TRAP SUMP PUMP DRAIN		1
260A	<b>8078689026</b>	CLAMP CIRC PUMP FLOW REGULATOR		1
260C	<b>8078689034</b>	CLAMP CIRCULATION PUMP-SUMP		1
260J	<b>8078689018</b>	CLAMP DRAIN HOSE Ø30mm		1
303	<b>140000531065</b>	BASEMENT REAR		1
320	<b>1526272214</b>	VENT VAPOUR OUTLET		1
520	<b>N.P.A.</b>	CLAMP COLLAR DRAIN HOSE		-
521	<b>N.P.A.</b>	PLUG DRAIN HOSE		-



P09113176040

**MODEL: DSF6105W****PNC 911519181 03  
911519181 04****EX. VIEW P09113176040  
PANEL CONTROL  
And WORKTOP**

<b>ITEM</b>	<b>PART N°</b>	<b>DESCRIPTION</b>	<b>EX. P09113176040</b>	<b>QTY</b>
125	<b>1520227016</b>	SPRING KNOB		1
313	<b>1561348010</b>	WORKTOP - WHITE		1
500	<b>140002446015</b>	KNOB WHITE		1
510	<b>8086161182</b>	PANEL CONTROL WHITE DSF6105W		1
525A	<b>140002461014</b>	BUTTON PUSH LEFT - WHITE		1
525B	<b>140002462012</b>	BUTTON PUSH RIGHT - WHITE		1
530	<b>140002463010</b>	HANDLE WHITE		1
530A	<b>140002464018</b>	COVER HANDLE - WHITE		1



<b>ITEM</b>	<b>PART N°</b>	<b>DESCRIPTION</b>	<b>EX. P09113183463</b>	<b>QTY</b>
143	<b>1561285113</b>	ROLLER BASKET ADJUSTMENT FRONT		2
	<b>1561285121</b>	ROLLER BASKET ADJUSTMENT REAR		2
201	<b>1380184109</b>	SUPPORT SPIKES RUBBER - GREY		4
319	<b>1561294057</b>	BASKET DISHWASHER BOTTOM GREY		1
319A	<b>140000152037</b>	BASKET UPPER DISHWASH ASSY		1
320	<b>REFER ITEM 342</b>	GRATE CUTLERY BASKET DK GREY		-
342	<b>ACC107</b>	BASKET ASSY CUTLERY GREY		1
523A	<b>50286965-00/4</b>	ROLLER KIT LOWER (PKT 8)		1
523B	<b>140001199052</b>	SUPPORT CUP GREY		4
550	<b>8070264018</b>	BUFFER BASKET UPPER		2
N.I.	<b>140018976013</b>	HOOK BASKET UPPER DISPENSER		1

# DISHWASHER ACCESSORY COMPONENTS - DISHLEX



ITEM	PART N°	DESCRIPTION
1	ACC017	Scalex Plus Descaler Sachet 75gm
2	ACC100	Detergent Dishwasher 1kg
3	ACC102	Rinse Aid Additive 500mls
4	ACC103	Descaler Powder 350g <b>(Dangerous Goods rules apply, min order Qty of 12)</b>
5	ACC002	Dishwasher Salt 1kg Pack
6	ACC088	Support Spikes Rubber – Grey
N.I.	ES5323K	Hose Drain Extension Kit (1M Length)
N.I.	0571400142	Hose Drain Extension Straight Cuffs (2M Length)

**P0000300001847**

BASE BOARD	Main electronic board
CAPACITOR	Capacitor
DISPENSER	Detergent dispenser
DOOR LOCK	Door lock
DRAIN PUMP	Drain pump
HEATER	Heating element
INLET VALVE	Inlet valve
INPUT BOARD	User interface (display)
LEAKAGE SWITCH	Anti-flooding device
MAIN SWITCH	Main switch
NTC/TURB. SENSOR	Turbidity sensor
POWER CORD	Power supply
PREASSURE SENSOR	Pressure Sensor
REG. VALVE	Regeneration valve
RINSE AID	Resin conditioning water switch
WASH PUMP	Washing pump
GN/YE	Green/yellow
RD	Red
BU	Blue
BR	Brown
BK	Black
SALT AID	Salt