

# Service Manual

**Air Conditioner**



**Indoor Unit**  
**CS-MRE5QKR**  
**CS-MRE7QKR**  
**CS-MRE9QKR**  
**CS-MRE12QKR**  
**CS-MRE18QKR**  
**CS-MRE24QKR**

**Destination**  
**Oceania**

Please file and use this manual together with the service manual for Model No. CU-4E23QBR CU-4E27QBR CU-5E34QBR, Order No. PAPAMY1404064CE

## **⚠ WARNING**

This service information is designed for experienced repair technicians only and is not designed for use by the general public. It does not contain warnings or cautions to advise non-technical individuals of potential dangers in attempting to service a product. Products powered by electricity should be serviced or repaired only by experienced professional technicians. Any attempt to service or repair the products dealt with in this service information by anyone else could result in serious injury or death.

## **IMPORTANT SAFETY NOTICE**

There are special components used in this equipment which are important for safety. These parts are marked by ⚠ in the Schematic Diagrams, Circuit Board Diagrams, Exploded Views and Replacement Parts List. It is essential that these critical parts should be replaced with manufacturer's specified parts to prevent shock, fire or other hazards. Do not modify the original design without permission of manufacturer.



## **PRECAUTION OF LOW TEMPERATURE**

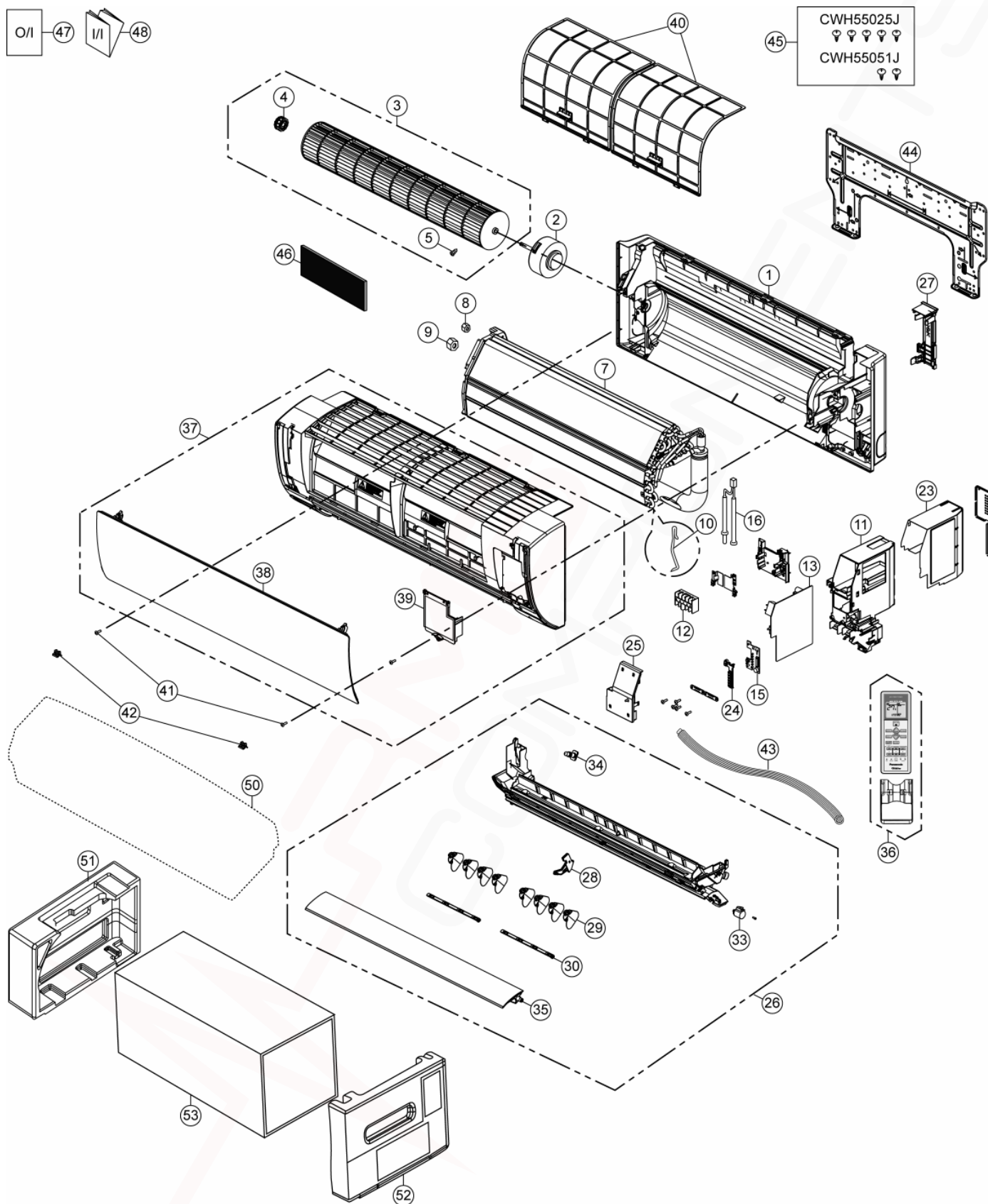
In order to avoid frostbit, be assured of no refrigerant leakage during the installation or repairing of refrigerant circuit.

**Panasonic®**

# 15. Exploded View and Replacement Parts List

## 15.1 Indoor Unit

### 15.1.1 CS-MRE5QKR CS-MRE7QKR CS-MRE9QKR CS-MRE12QKR



#### Note

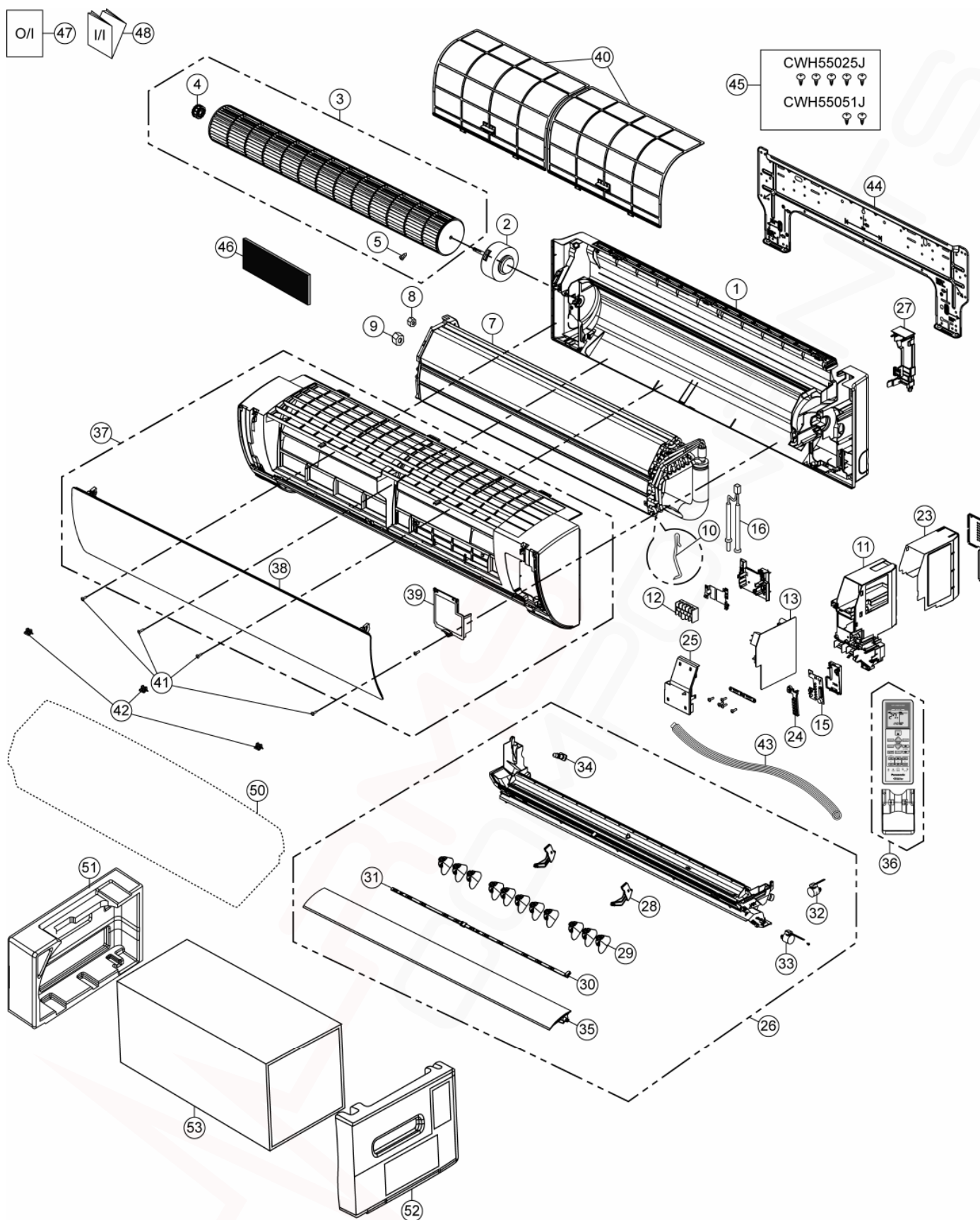
The above exploded view is for the purpose of parts disassembly and replacement.  
The non-numbered parts are not kept as standard service parts.

SAFETY	REF NO.	PART NAME & DESCRIPTION	QTY.	CS-MRE5QKR	CS-MRE7QKR	CS-MRE9QKR	CS-MRE12QKR	REMARK
	1	CHASSIS COMPLETE	1	CWD50C1653	←	←	←	
⚠	2	FAN MOTOR	1	L6CBYYYL0037	←	←	ARW7628AC	O
	3	CROSS FLOW FAN COMPLETE	1	CWH02C1076	←	←	←	
	4	BEARING ASS'Y	1	CWH64K007	←	←	←	
	5	SCREW - CROSS FLOW FAN	1	CWH551146	←	←	←	
	7	EVAPORATOR	1	CWB30C4443	←	CWB30C4210	CWB30C3628	
	8	FLARE NUT (LIQUID)	1	CWT251030	←	←	←	
	9	FLARE NUT (GAS)	1	CWT251031	←	←	CWT251032	
	10	HOLDER SENSOR	1	CWH32143	←	←	←	
	11	CONTROL BOARD CASING	1	CWH102449	←	←	←	
⚠	12	TERMINAL BOARD COMPLETE	1	CWA28C2357	←	←	←	O
⚠	13	ELECTRONIC CONTROLLER - MAIN	1	CWA73C8459	CWA73C8460	CWA73C8461	CWA73C8462	O
⚠	15	ELECTRONIC CONTROLLER-INDICATOR & RECEIVER	1	CWA747149	←	←	←	O
	16	SENSOR COMPLETE	1	CWA50C2401	←	←	←	O
	23	CONTROL BOARD TOP COVER	1	CWH131467	←	←	←	
	24	INDICATOR HOLDER	1	CWD933406	←	←	←	
	25	CONTROL BOARD FRONT COVER	1	CWH13C1247	←	←	←	
	26	DISCHARGE GRILLE COMPLETE	1	CWE20C3236	←	←	←	
	27	BACK COVER CHASSIS	1	CWD933233	←	←	←	
	28	FULCRUM	1	CWH621131	←	←	←	O
	29	VERTICAL VANE	8	CWE241374	←	←	←	
	30	CONNECTING BAR	2	CWE261251	←	←	←	
⚠	33	AIR SWING MOTOR	1	CWA981264	←	←	←	O
	34	CAP - DRAIN TRAY	1	CWH521096	←	←	←	
	35	HORIZONTAL VANE	1	CWE24C1385	←	←	←	
	36	REMOTE CONTROL COMPLETE	1	CWA75C4506	←	←	←	O
	37	FRONT GRILLE COMPLETE	1	CWE11C5931	←	←	←	O
	38	INTAKE GRILLE COMPLETE	1	CWE22C1861	←	←	←	
	39	GRILLE DOOR	1	CWE14C1090	←	←	←	
	40	AIR FILTER	2	CWD001279	←	←	←	O
	41	SCREW - FRONT GRILLE	2	XTT4+16CFJ	←	←	←	
	42	CAP - FRONT GRILLE	2	CWH521227	←	←	←	
	43	DRAIN HOSE	1	CWH851174	←	←	←	
	44	INSTALLATION PLATE	1	CWH361134	←	←	←	
	45	BAG COMPLETE - INSTALLATION SCREW	1	CWH82C1705	←	←	←	
	46	ANTI-BACTERIAL FILTER	1	CWD00C1280	←	←	←	O
	47	OPERATING INSTRUCTION	1	CWF569673	←	←	←	
	48	INSTALLATION INSTRUCTION	1	CWF616458	←	←	←	
	50	BAG	1	CWG861497	←	←	←	
	51	SHOCK ABSORBER ( LEFT )	1	CWG713386	←	←	←	
	52	SHOCK ABSORBER ( RIGHT )	1	CWG713387	←	←	←	
	53	C.C. CASE	1	CWG567355	←	←	←	

(Note)

- All parts are supplied from PAPAMY, Malaysia (Vendor Code: 00029488).
- "O" marked parts are recommended to be kept in stock.

## 15.1.2 CS-MRE18QKR CS-MRE24QKR



### Note

The above exploded view is for the purpose of parts disassembly and replacement.  
The non-numbered parts are not kept as standard service parts.

SAFETY	REF NO.	PART NAME & DESCRIPTION	QTY.	CS-MRE18QKR	CS-MRE24QKR	REMARK
	1	CHASSIS COMPLETE	1	CWD50C1654	←	
⚠	2	FAN MOTOR	1	L6CBYYYL0039	←	O
	3	CROSS FLOW FAN COMPLETE	1	CWH02C1077	←	
	4	BEARING ASS'Y	1	CWH64K007	←	
	5	SCREW - CROSS FLOW FAN	1	CWH551146	←	
	7	EVAPORATOR	1	CWB30C3860	CWB30C3767	
	8	FLARE NUT (LIQUID)	1	CWT251030	←	
	9	FLARE NUT (GAS)	1	CWT251032	CWT251033	
	10	HOLDER SENSOR	1	CWH32143	←	
	11	CONTROL BOARD CASING	1	CWH102449	←	
⚠	12	TERMINAL BOARD COMPLETE	1	CWA28C2357	←	O
⚠	13	ELECTRONIC CONTROLLER - MAIN	1	CWA73C8463	CWA73C8464	O
⚠	15	ELECTRONIC CONTROLLER-INDICATOR & RECEIVER	1	CWA747149	←	O
	16	SENSOR COMPLETE	1	CWA50C2401	CWA50C2782	O
	23	CONTROL BOARD TOP COVER	1	CWH131467	←	
	24	INDICATOR HOLDER	1	CWD933406	←	
	25	CONTROL BOARD FRONT COVER	1	CWH13C1247	←	
	26	DISCHARGE GRILLE COMPLETE	1	CWE20C3242	←	
	27	BACK COVER CHASSIS	1	CWD933031	←	
	28	FULCRUM	2	CWH621138	←	O
	29	VERTICAL VANE	11	CWE241374	←	
	30	CONNECTING BAR	1	CWE261257	←	
	31	CONNECTING BAR	1	CWE261258	←	
⚠	32	AIR SWING MOTOR	1	CWA98K1018	←	
⚠	33	AIR SWING MOTOR	1	CWA981241	←	O
	34	CAP - DRAIN TRAY	1	CWH521096	←	
	35	HORIZONTAL VANE	1	CWE24C1392	←	
	36	REMOTE CONTROL COMPLETE	1	CWA75C4149	←	O
	37	FRONT GRILLE COMPLETE	1	CWE11C5932	CWE11C5933	O
	38	INTAKE GRILLE COMPLETE	1	CWE22C1888	←	
	39	GRILLE DOOR	1	CWE14C1090	←	
	40	AIR FILTER	2	CWD001283	←	O
	41	SCREW - FRONT GRILLE	4	XTT4+16CFJ	←	
	42	CAP - FRONT GRILLE	3	CWH521227	←	
	43	DRAIN HOSE	1	CWH851173	←	
	44	INSTALLATION PLATE	1	CWH361098	←	
	45	BAG COMPLETE - INSTALLATION SCREW	1	CWH82C1705	←	
	46	ANTI-BACTERIAL FILTER	1	CWD00C1280	←	O
	47	OPERATING INSTRUCTION	1	CWF569673	←	
	48	INSTALLATION INSTRUCTION	1	CWF616458	←	
	50	BAG	1	CWG861498	←	
	51	SHOCK ABSORBER ( LEFT )	1	CWG713402	←	
	52	SHOCK ABSORBER ( RIGHT )	1	CWG713403	←	
	53	C.C. CASE	1	CWG567455	←	

(Note)

- All parts are supplied from PAPAMY, Malaysia (Vendor Code: 00029488).
- "O" marked parts are recommended to be kept in stock.