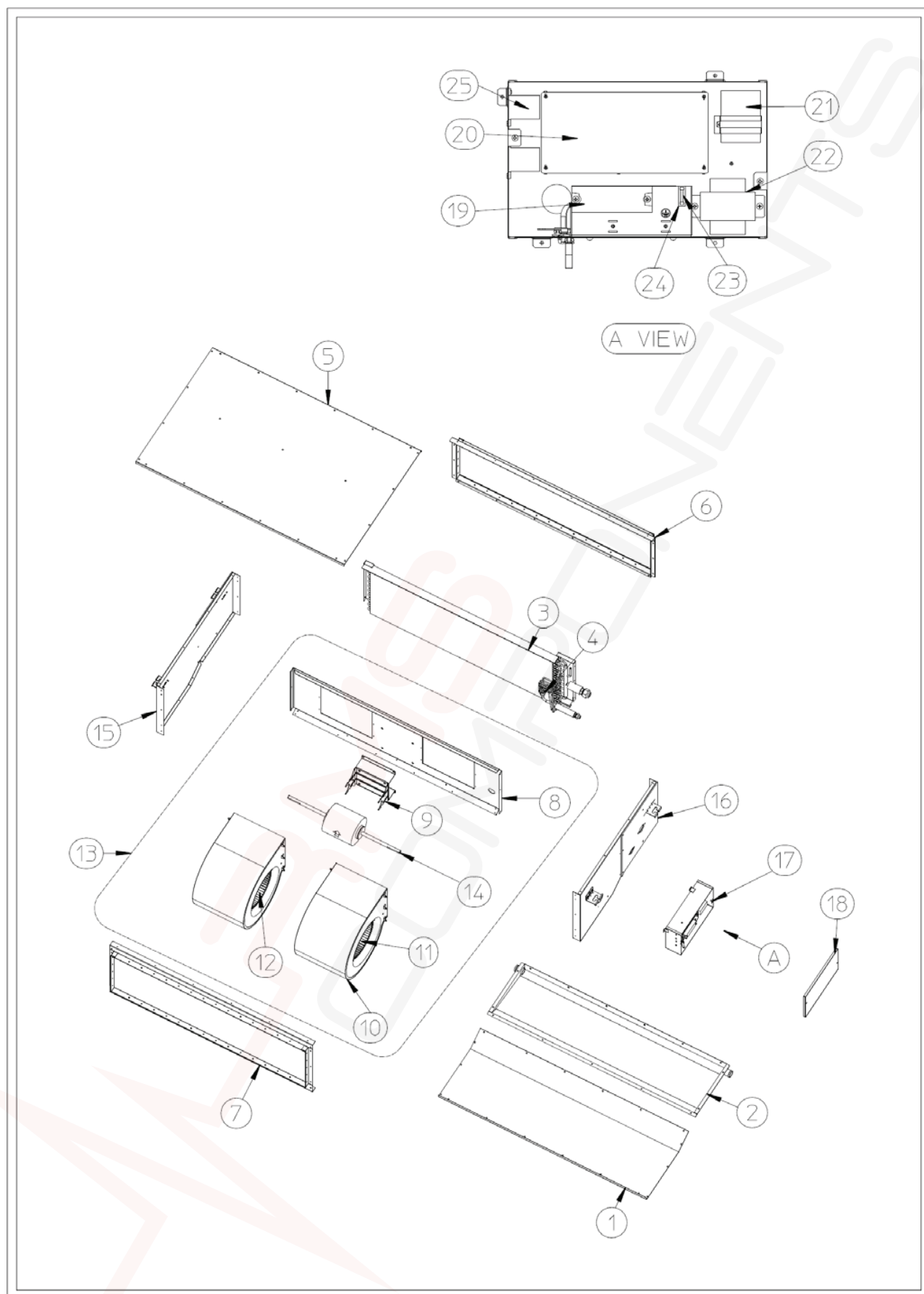


REF. NO.	PARTS NAME	PARTS NUMBER				
		S-60PE1R5	S-71PE1R5	S-100PE1R5	S-125PE1R5	S-140PE1R5
1	Cabinet(Bottom)	P05-T16470	←	←	←	←
2	Drain pan	P42-T04920	←	←	←	←
3	Evaporator	P45-T09840	P45-T10170	P45-T10130	P45-T10060	P45-T09660
4	Distributor as.	P45-T09830	P45-T10190	P45-T10150	P45-T10040	P45-T09720
5	Cabinet(TOP)	P05-T16450	←	←	←	←
6	Filter guide as.	P42-T04890	P42-T04880	←	P42-T04870	←
7	Filter guide as.	P42-T04800	P42-T04790	←	P42-T04780	←
8	Fan base as(W.)	P45-T09890	P45-T09900	P45-T09900	P45-T09910	P45-T09920
9	Stay fan motor	—	P46-T06530	←	←	P46-T06520
10	Casing	P45-T07950	P45-T07990	P45-T07990	P45-T07990	P45-T07570
11	Impeller					P45-T08760
12	Impeller	—	—	—	—	P45-T08780
13	Fan base as(C.)	P45-T09850	P45-T09860	P45-T09970	P45-T09870	P45-T09880
14	Motor	P06-T06020	P06-T06030	P06-T06040	P06-T06050	P06-T06060
15	Panel side R as.	P42-T04840	P42-T04850	←	P42-T04860	←
16	Panel side L as.	P42-T04810	P42-T04820	←	P42-T04830	←
17	C box assembly	P46-T08540	P46-T08530	P46-T08520	P46-T08510	P46-T08500
18	Cover	P06-T06140	←	←	←	←
19	Terminal board	P06-T06010	←	←	←	←
20	PCB assembly	C3937-840	←	←	←	←
21	Capacitor	P06-T06240	P06-T06230	P06-T06220	P06-T06220	P06-T06210
22	Transformer	C3933-060	←	←	←	←
23	Fuse stay	—	—	—	—	P06-T04740
24	Fuse	—	—	—	—	P06-T04750
25	Relay	—	—	—	—	P06-T05080



REF. NO.	PARTS NAME	G21 NEW/ OLD PART*	IGP PART RECOMMENDED	QTY/SET	PARTS NUMBER				
					S-60PE1R5	S-71PE1R5	S-100PE1R5	S-125PE1R5	S-140PE1R5
1	Cabinet(Bottom)	NEW			P05-T16470	←	←	←	←
2	Drain pan	NEW			P42-T04920	←	←	←	←
3	Evaporator	NEW	○		P45-T09840	P45-T10170	P45-T10130	P45-T10060	P45-T09660
4	Distributor as.	NEW			P45-T09830	P45-T10190	P45-T10150	P45-T10040	P45-T09720
5	Cabinet(TOP)	NEW			P05-T16450	←	←	←	←
6	Filter guide as.	NEW			P42-T04890	P42-T04880	←	P42-T04870	←
7	Filter guide as.	NEW			P42-T04800	P42-T04790	←	P42-T04780	←
8	Fan base as(W.)	NEW			P45-T09890	P45-T09900	P45-T09900	P45-T09910	P45-T09920
9	Stay fan motor	NEW			—	P46-T06530	←	←	P46-T06520
10	Casing				P45-T07950	P45-T07990	P45-T07990	P45-T07990	P45-T07570
11	Impeller								P45-T08760
12	Impeller				—	—	—	—	P45-T08780
13	Fan base as(C.)	NEW			P45-T09850	P45-T09860	P45-T09970	P45-T09870	P45-T09880
14	Motor	NEW	○		P06-T06020	P06-T06030	P06-T06040	P06-T06050	P06-T06060
15	Panel side R as.	NEW			P42-T04840	P42-T04850	←	P42-T04860	←
16	Panel side L as.	NEW			P42-T04810	P42-T04820	←	P42-T04830	←
17	C box assembly	NEW			P46-T08540	P46-T08530	P46-T08520	P46-T08510	P46-T08500
18	Cover	NEW			P06-T06140	←	←	←	←
19	Terminal board	NEW			P06-T06010	←	←	←	←
20	PCB assembly	NEW	○		C3937-840	←	←	←	←
21	Capacitor	NEW	○		P06-T06240	P06-T06230	P06-T06220	P06-T06220	P06-T06210
22	Transformer	NEW			C3933-060	←	←	←	←
23	Fuse stay				—	—	—	—	P06-T04740
24	Fuse				—	—	—	—	P06-T04750
25	Relay	NEW	○		—	—	—	—	P06-T05080
26	Sensor	NEW	○		C3935-220	←	←	←	←
27	Sensor(RED)	NEW	○		C3935-230	←	←	←	←
28	Sensor(BLACK)	NEW	○		C3935-240	←	←	←	←

\* OLD PART = ALREADY EXIST IN G21 (OLD MODELS)

" O " MARKED PARTS ARE RECOMMENDED TO BE KEPT IN STOCK.

PANASONIC HOME APPLIANCES AIR-CONDITINING(GUANGZHOU) CO.,LTD