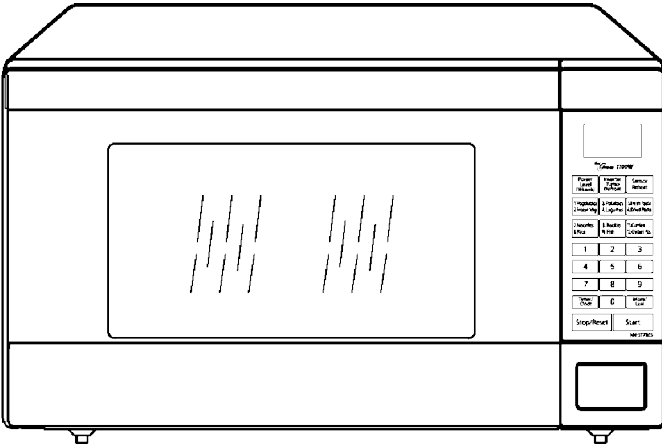


Service Manual

Microwave Oven

NN-ST780S
NN-ST780W
NN-ST750W

QPQ (Australia & New Zealand)

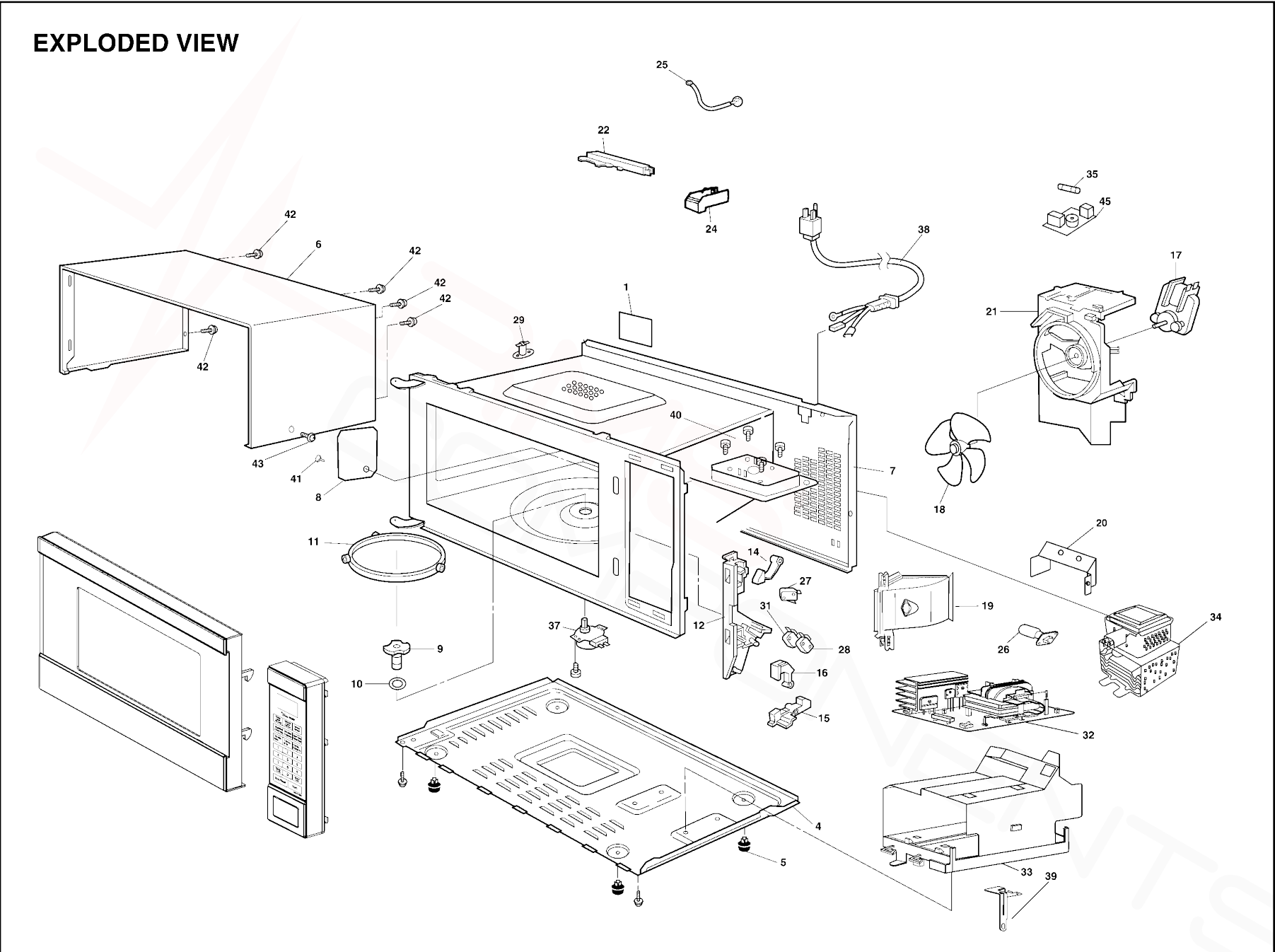


Specifications:

Specifications:	Models:	ST780S	ST780W	ST750W
Power Source:	230V-240V AC Single Phase, 50Hz			
Power Consumption:	1150W	1150W	1150W	
Output:	1100W	1100W	1100W	
Microwave Frequency:	2450MHz			
Timer:	30 min. / Stage (HIGH Power) ~ 3 Stage Maximum 99 min. 99 sec / Stage (Other Power Levels) ~ 3 Stage Maximum			
Outside Dimensions:	555mm(W) X 304mm(H) X 493mm(D)			
Oven Cavity Dimensions:	418mm(W) X 228mm(H) X 470mm(D)			
Weight:	14.3 kg			
PbF	This product with PbF			
Specifications subject to change without notice.				

8 EXPLODED VIEW AND PARTS LIST

8.1. EXPLODED VIEW



8.2. PARTS LIST

NOTE:

1. When ordering replacement part(s), please use part number(s) shown in this part list.

Do not use description of the part.

2. Important safety notice:

Components identified by mark have special characteristics important for safety.

When replacing any of these components, use only manufacture's specified parts.

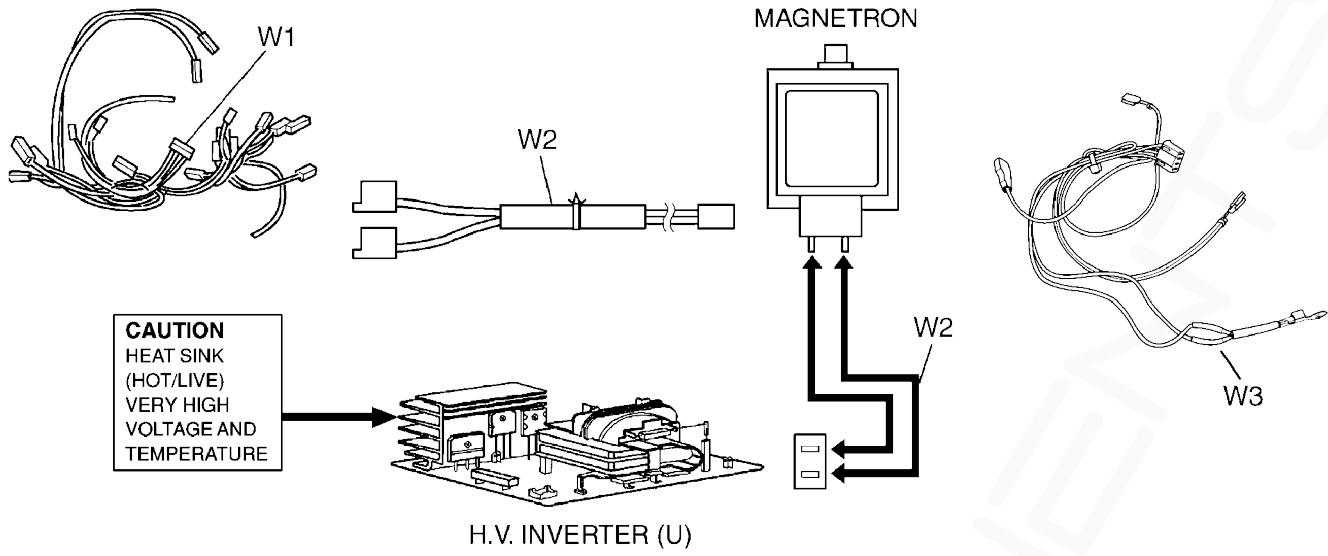
NOTE:

"A" parts are supplied by MOBU (Japan)

"F" parts are supplied by PHAMOS (China)

Ref. No.		Part No.	Part Name & Description	Pcs/Set	Remarks
1		F00066V00HP	CAUTION LABEL	1	
4		F10016H60APG	BASE	1	
5		F10084T00APS	RUBBER FOOT	4	
6		F10095X20SAP	CABINET BODY (U)	1	ST780S
6		F10095X20HAP	CABINET BODY (U)	1	ST780W,ST750W
7	△	F200A8E00AP	OVEN (U)	1	ST780S,ST780W
7	△	F200A8E40AP	OVEN (U)	1	ST750W
8		F20555K00AP	COVER	1	
9		F21315Y00AP	PULLY SHAFT	1	
10		F2177-F80	WASHER	1	
11		F290D9330AP	ROLLER RING (U)	1	
12	△	F30206G30AP	DOOR HOOK	1	
14		F31366G30AP	HOOK LEVER A	1	
15		F31376G30AP	HOOK LEVER B	1	
16		F31386G30AP	HOOK LEVER C	1	
17		F400A6V00QP	FAN MOTOR	1	AC240V, SINGLE PHASE, 50Hz
18		F40084T00AP	FAN BLADE	1	
19		F40254W00AP	AIR GUIDE A	1	
20		F40264T60APG	AIR GUIDE B	1	
21		F41445W00AP	ORIFICE	1	
22		F64508660AP	SENSOR COVER B	1	ST780S,ST780W
24		F65434W00AP	SENSOR COVER C	1	ST780S,ST780W
25		J607S4M00AP	STEAM SENSOR	1	ST780S,ST780W
26		F612E4Y00XP	INCANDESCENT LAMP (U)	1	
27	△	F61425U30XN	MICRO SWITCH	1	(PRIMARY LATCH SWITCH)
28	△	F61415U30XN	MICRO SWITCH	1	(SECONDARY LATCH SWITCH)
29	△	F61455L00CP	THERMAL CUTOUT	1	105 °C
31	△	F61785U30XN	MICRO SWITCH	1	(SHORT SWITCH)
32	△	F606YM300BP	H.V. INVERTER (U)	1	
33		F65856K50AP	INVERTER BRACKET	1	
34	△	2M261-M32JP	MAGNETRON	1	
35	△	F62306V60BP	FUSE	1	10A/240V, 50Hz
37		F63265U30XN	TURNTABLE MOTOR	1	
38	△	F900C9J20QP	AC CORD W/PLUG	1	
39		F66626H60AP	GROUNDING PLATE	1	
40		XTWFL4+12T	SCREW	4	FOR MAGNETRON
41		F90804W00AP	CANOE CLIP	1	FOR COVER
42		XTWFA4+12D	SCREW	5	FOR CABINET BODY
43		XTTFL4+6BN	SCREW	1	FOR CABINET BODY SIDE
45		F607X9J20QP	NOISE FILTER	1	

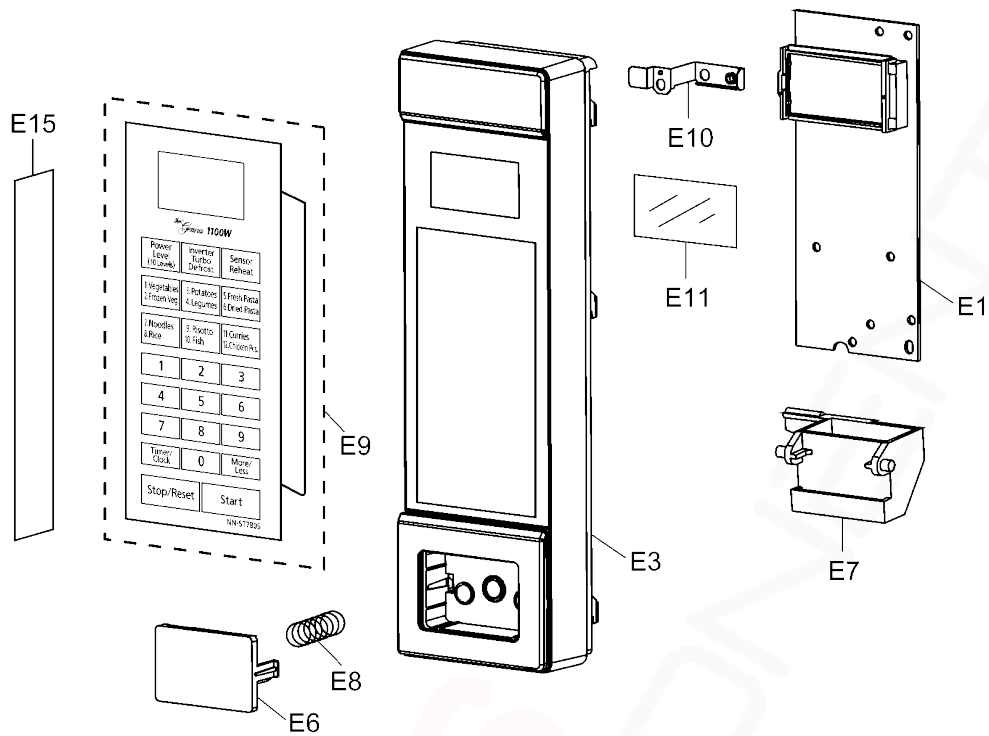
8.3. WIRING MATERIALS



Ref. No.	Part No.	Part Name & Description	Pcs/Set	Remarks
W1	F030A9U40QP	LEAD WIRE HARNESS	1	
W2	F030E6G30AP	H.V. LEAD WIRE	1	
W3	F03539U30QP	LEAD WIRE HARNESS (U)	1	

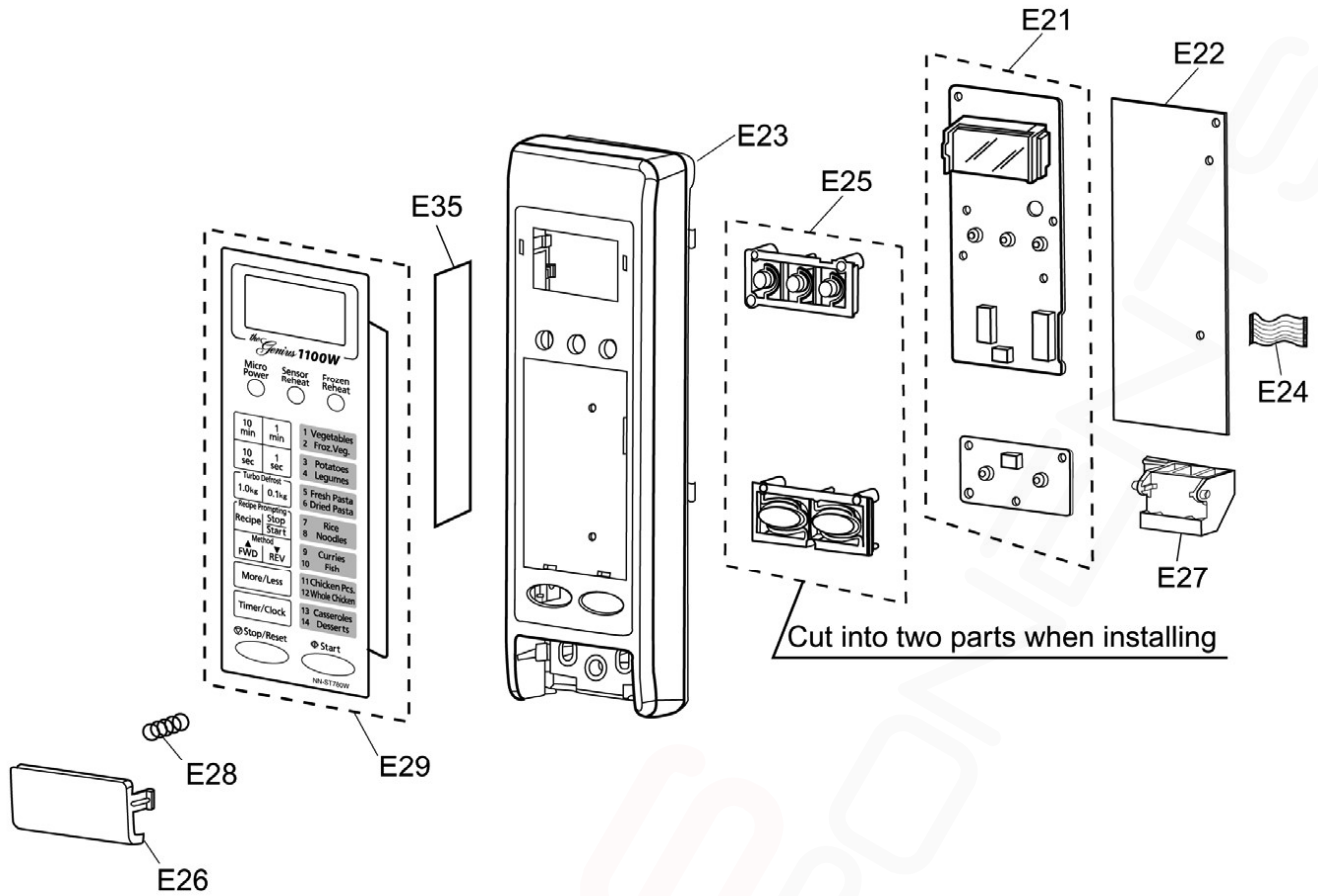
8.4. ESCUTCHEON BASE ASSEMBLY

8.4.1. NN-ST780S



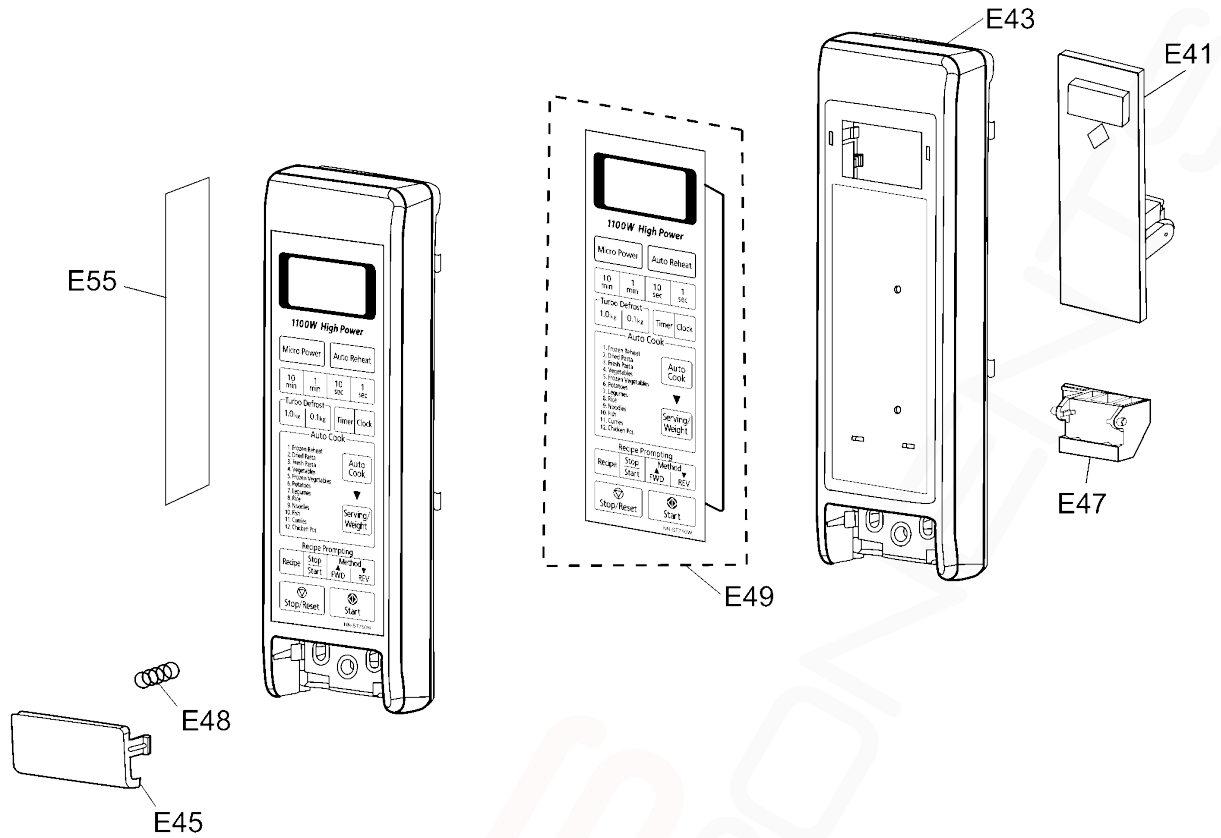
Ref. No.	Part No.	Part Name & Description	Pcs/Set	Remarks
E1	F603L9U30QP	D.P.CIRCUIT (AU)	1	ST780S
E3	F800L9R30SAP	ESCUTCHEON BASE (U)	1	ST780S
E6	F891P9R30SAP	DOOR OPENING BUTTON (U)	1	ST780S
E7	F82565X00AP	DOOR OPENING LEVER	1	ST780S
E8	F80375K00AP	COOK BUTTON SPRING	1	
E9	F630Y9U30SQP	MEMBRANE SWITCH (U)	1	ST780S
E10	F90098N00AP	GROUNDING PANEL	1	ST780S
E11	F64579S00CP	FILTER	1	ST780S
E15	F00079U30SQP	NAME PLATE	1	ST780S

8.4.2. NN-ST780W



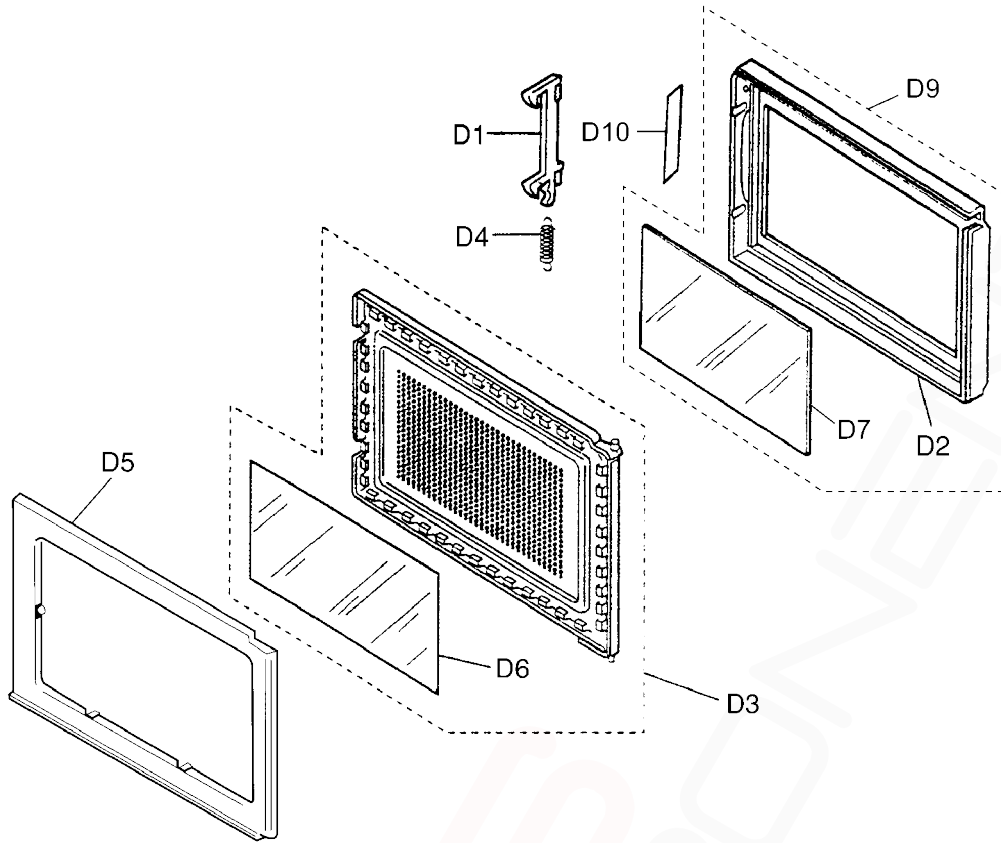
Ref. No.	Part No.	Part Name & Description	Pcs/Set	Remarks
E21	F603L9U40QP	D.P.CIRCUIT (AU)	1	ST780W
E22	F603Y9U40QP	D.P.CIRCUIT (DU)	1	ST780W
E23	F80348E50HQP	ESCUTCHEON BASE	1	ST780W
E24	F66164W20AP	FLAT CABLE	1	ST780W
E25	F82987D60KAP	BUTTON	1	ST780W
E26	F80727C50HAP	DOOR OPENING BUTTON	1	ST780W
E27	F82565X00AP	DOOR OPENING LEVER	1	ST780W
E28	F80375K00AP	COOK BUTTON SPRING	1	
E29	F630Y9U40HQP	MEMBRANE SWITCH (U)	1	ST780W
E35	F00079U40HQP	NAME PLATE	1	ST780W

8.4.3. NN-ST750W



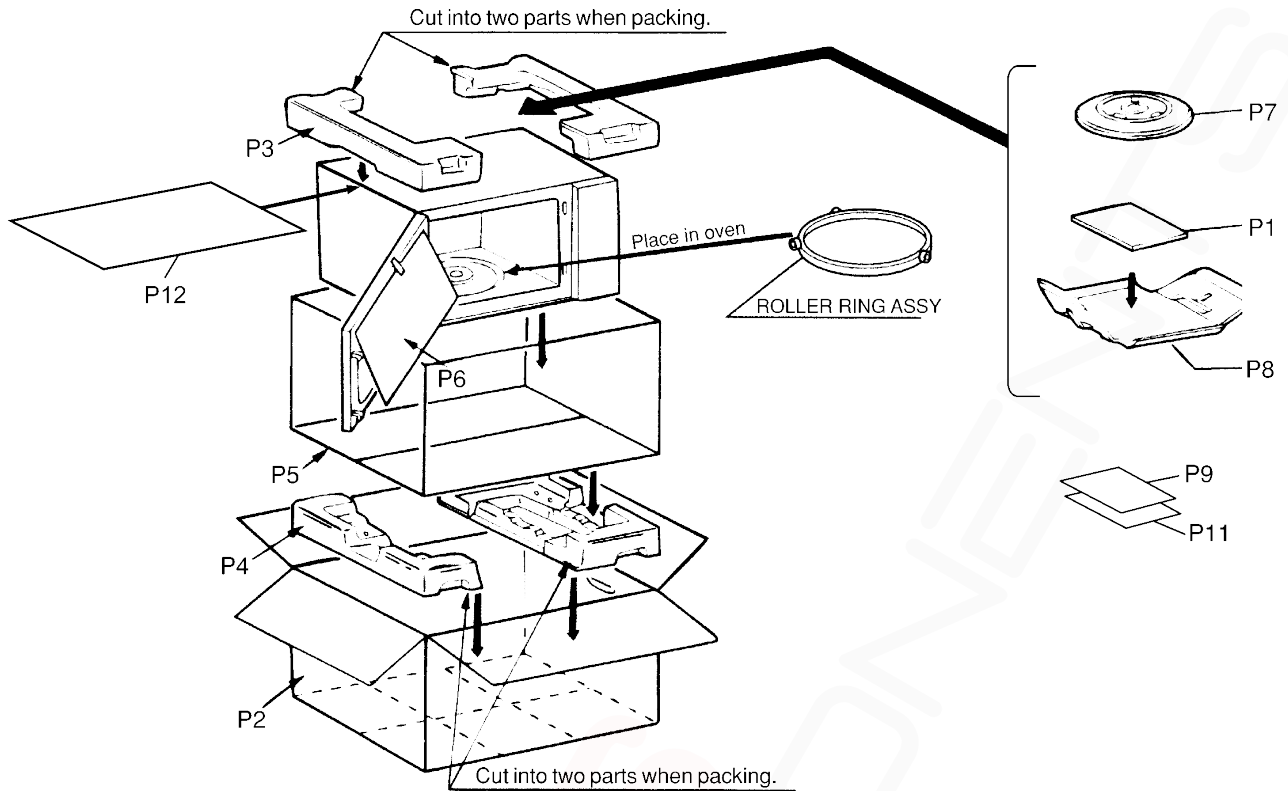
Ref. No.	Part No.	Part Name & Description	Pcs/Set	Remarks
E41	F603L9U50QP	D.P.CIRCUIT (AU)	1	ST750W
E43	F80348E60HQP	ESCUTCHEON BASE	1	ST750W
E45	F80726J00HAP	DOOR OPENING BUTTUN	1	ST750W
E47	F82564W00AP	DOOR OPENING LEVER	1	ST750W
E48	F80375K00AP	COOK BUTTON SPRING	1	
E49	F630Y9U50HQP	MEMBRANE SWITCH (U)	1	ST750W
E55	F00079U50HQP	NAME PLATE	1	ST750W

8.5. DOOR ASSEMBLY



Ref. No.		Part No.	Part Name & Description	Pcs/Set	Remarks
D1		F30186P40AG	DOOR KEY A	1	
D2	⚠	F30016V20HQP	DOOR A	1	ST780W,ST750W
D3	⚠	F302KBF20AP	DOOR E (U)	1	
D4		F30216P40AG	DOOR KEY SPRING	1	
D5	⚠	F3085BF20AP	DOOR C	1	
D6	⚠	F31456V00XP	DOOR SCREEN A	1	
D7		F31468E30BAP	DOOR SCREEN B	1	ST780W,ST750W
D9	⚠	F301A9R30SAP	DOOR A (U)	1	ST780S
D10		F01726V00JP	CAUTION LABEL B	1	

8.6. PACKING AND ACCESSORIES



Ref. No.	Part No.	Part Name & Description	Pcs/Set	Remarks
P1	F00039U20QP	INSTRUCTION MANUAL	1	ST780S
P1	F00039U40QP	INSTRUCTION MANUAL	1	ST780W, ST750W
P2	F01029U30SQP	PACKING CASE, PAPER	1	ST780S
P2	F01029U40HQP	PACKING CASE, PAPER	1	ST780W
P2	F01029U50HQP	PACKING CASE, PAPER	1	ST750W
P3	F01049R30AP	UPPER FILLER	1	ST780S
P3	F01044W00AP	UPPER FILLER	1	ST780W, ST750W
P4	F01059R30AP	LOWER FILLER	1	ST780S
P4	F01054W00AP	LOWER FILLER	1	ST780W, ST750W
P5	F01067C50AP	P.E. BAG	1	ST780S
P5	F01064W00AP	P.E. BAG	1	ST780W, ST750W
P6	F01074W00AP	DOOR SHEET	1	
P7	A06014A00AP	COOKING TRAY	1	
P8	F01084W00AP	TRAY PACKING	1	
P9	F00065G40AP	CAUTION LABEL	1	
P11	F00166V20QP	NOTICE	1	
P12	F01924U00AP	SHEET	1	ST780W, ST750W