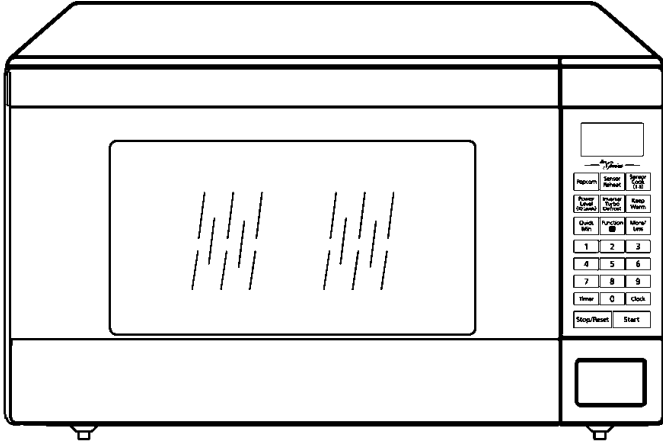


Service Manual

Microwave Oven

NN-ST680S

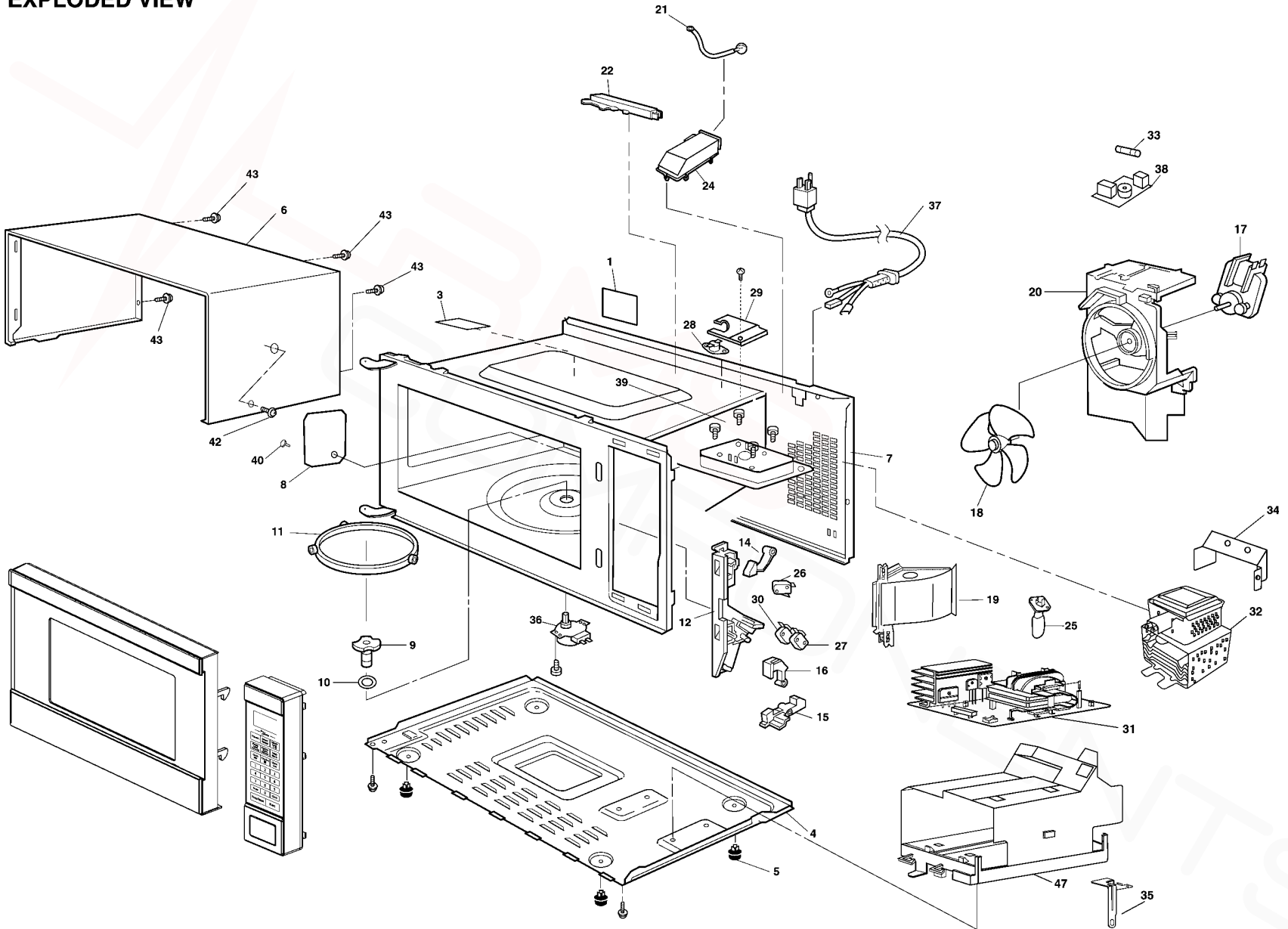
QPQ (Australia & New Zealand)



Specifications:

Specifications:	Models:	NN-ST680S
Power Source:		230V-240V AC Single Phase, 50Hz
Power Consumption:		1050W
Output:		1100W
Microwave Frequency:		2450MHz
Timer:		30 min. / Stage (HIGH Power) ~ 3 Stage Maximum 99 min. 99 sec / Stage (Other Power Levels) ~ 3 Stage Maximum
Outside Dimensions:		518mm(W) X 301mm(H) X 406mm(D)
Oven Cavity Dimensions:		375mm(W) X 225mm(H) X 386mm(D)
Weight:		12kg
PbF		This product with PbF
Specifications subject to change without notice.		

EXPLODED VIEW



8 EXPLODED VIEW AND PARTS LIST
8.1. EXPLODED VIEW

8.2. PARTS LIST

NOTE:

1. When ordering replacement part(s), please use part number(s) shown in this part list.

Do not use description of the part.

2. Important safety notice:

Components identified by mark have special characteristics important for safety.

When replacing any of these components, use only manufacture's specified parts.

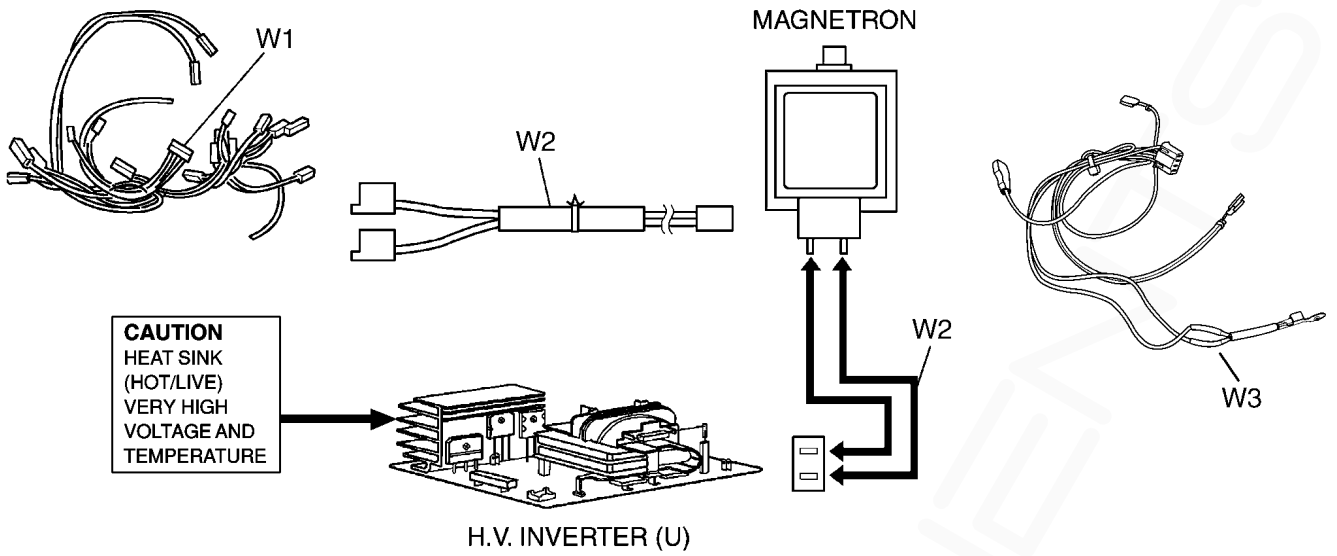
NOTE:

"A" parts are supplied by MOBU (Japan)

"F" parts are supplied by PHAMOS (China)

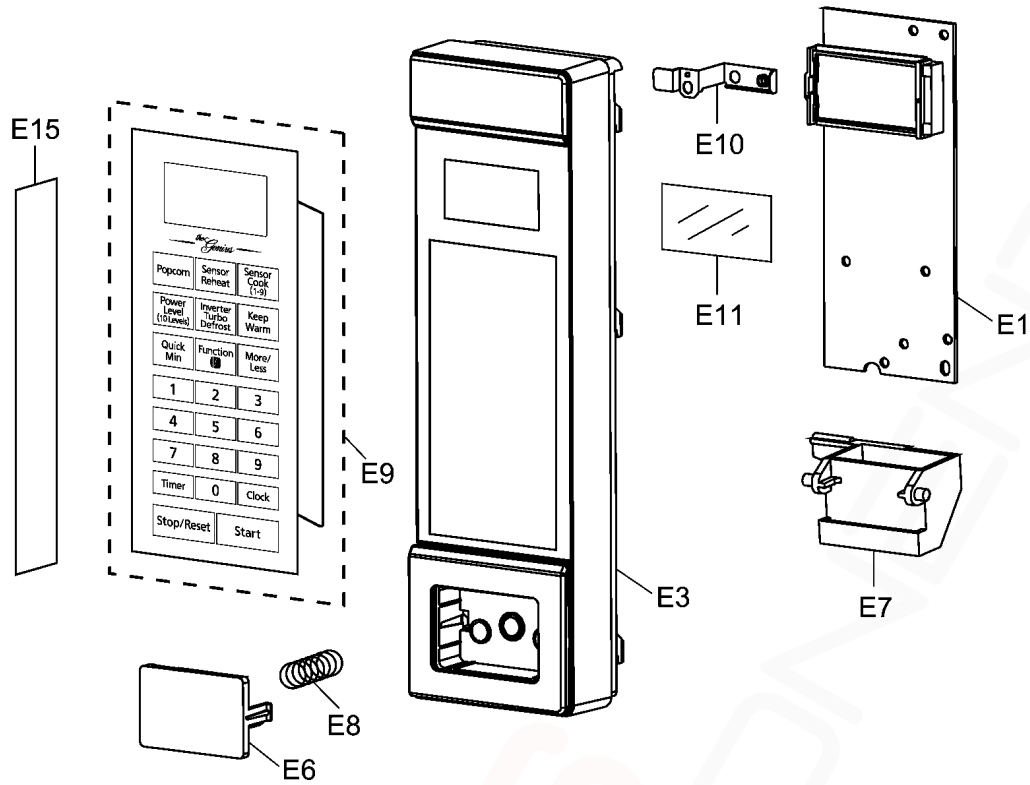
Ref. No.		Part No.	Part Name & Description	Pcs/Set	Remarks
1		F00066V00HP	CAUTION LABEL	1	
3		F21555500AP	OVEN STICKY PAPER	1	
4		F10016K10APG	BASE	1	
5		F10084T00APS	RUBBER FOOT	4	
6		F10095Y30SAP	CABINET BODY (U)	1	
7	△	F200A8F00AP	OVEN (U)	1	
8		F20555L00AP	COVER	1	
9		F21315Y00AP	PULLY SHAFT	1	
10		F2177-F80	WASHER	1	
11		F290D9330AP	ROLLER RING (U)	1	
12	△	F30206G30AP	DOOR HOOK	1	
14		F31366G30AP	HOOK LEVER A	1	
15		F31376G30AP	HOOK LEVER B	1	
16		F31386G30AP	HOOK LEVER C	1	
17		F400A6V00QP	FAN MOTOR	1	AC240V, SINGLE PHASE, 50Hz
18		F40084T00AP	FAN BLADE	1	
19		F40259J20QP	AIR GUIDE A	1	
20		F41445Y00AP	ORIFICE	1	
21		J607S4T00AP	STEAM SENSOR	1	
22		F64508660AP	SENSOR COVER B	1	
24		F65434W00AP	SENSOR COVER C	1	
25		F612E9C30BP	INCANDESCENT LAMP (U)	1	
26	△	F61425U30XN	MICRO SWITCH	1	(PRIMARY LATCH SWITCH)
27	△	F61415U30XN	MICRO SWITCH	1	(SECONDARY LATCH SWITCH)
28	△	F61455L00CP	THERMAL CUTOUT	1	105°C
29		F66264T00CP	THERMAL CUTOUT INSULATION BRACKET	1	
30	△	F61785U30XN	MICRO SWITCH	1	(SHORT SWITCH)
31	△	F606YM300BP	H.V. INVERTER (U)	1	
32	△	2M261-M32J3P	MAGNETRON	1	
33	△	F62306V60BP	FUSE	1	10A/240V, 50Hz
34		F40264T60APG	AIR GUIDE B	1	
35		F66626K50AP	GROUNDING PLATE	1	
36		F63265U30XN	TURNTABLE MOTOR	1	
37	△	F900C9J20QP	AC CORD W/PLUG	1	
38		F607X9J20QP	NOISE FILTER (U)	1	
39		XTWFL4+12T	SCREW	4	FOR MAGNETRON
40		XTTFL4+6BN	SCREW	1	FOR COVER
42		XTCAFL4+12AFS	SCREW	1	FOR CABINET BODY SIDE
43		XTWFA4+12D	SCREW	4	FOR CABINET BODY
47		F65856K50AP	INVERTER BRACKET	1	

8.3. WIRING MATERIALS



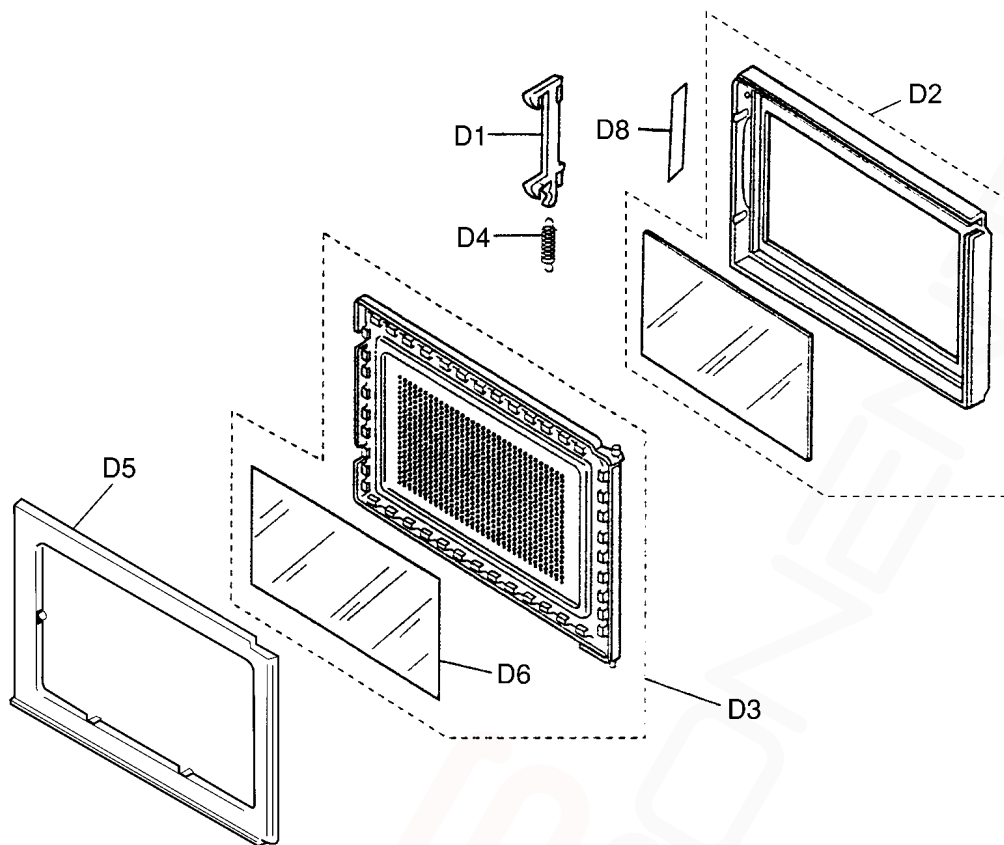
Ref. No.	Part No.	Part Name & Description	Pcs/Set	Remarks
W1	F030A9U20QP	LEAD WIRE HARNESS	1	
W2	F030E5L00QP	H.V. LEAD WIRE	1	
W3	F03537D00AP	LEAD WIRE HARNESS U	1	(INCLUDING THERMISTOR)

8.4. ESCUTCHEON BASE ASSEMBLY



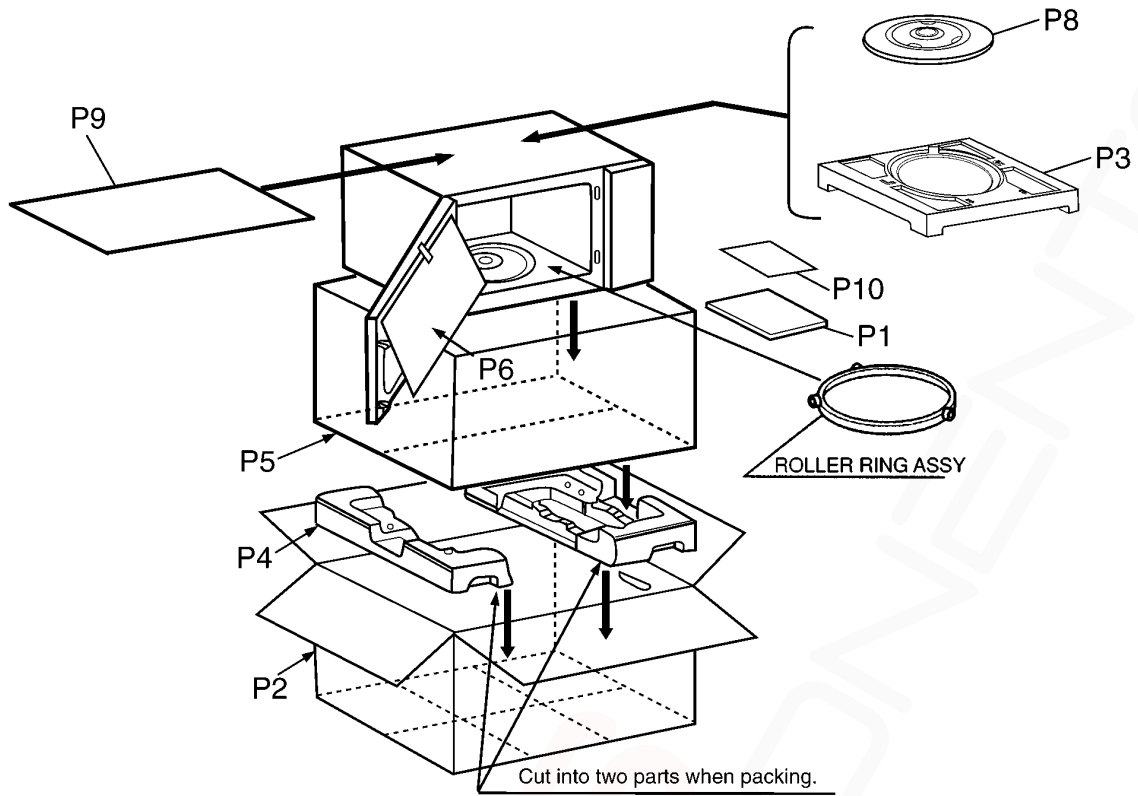
Ref. No.	Part No.	Part Name & Description	Pcs/Set	Remarks
E1	F603L9U20QP	D.P.CIRCUIT (AU)	1	
E3	F800L9S30SAP	ESCUTCHEON BASE (U)	1	
E6	F891P9S30SAP	DOOR OPENING BUTTON (U)	1	
E7	F82566K10AP	DOOR OPENING LEVER	1	
E8	F80375K00AP	COOK BUTTON SPRING	1	
E9	F630Y9U20SQP	MEMBRANE SWITCH (U)	1	
E10	F90095X00AP	GROUNDING PANEL	1	
E11	F64579S00CP	FILTER	1	
E15	F00079U20SQP	NAME PLATE	1	

8.5. DOOR ASSEMBLY



Ref. No.		Part No.	Part Name & Description	Pcs/Set	Remarks
D1		F30186P40AG	DOOR KEY A	1	
D2	⚠	F301A9S30SAP	DOOR A (U)	1	
D3	⚠	F302K5L00AP	DOOR E (U)	1	
D4		F30216P40AG	DOOR KEY SPRING	1	
D5	⚠	F30858X10AP	DOOR C	1	
D6	⚠	F31459S80XP	DOOR SCREEN A	1	
D8		F01726V00JP	CAUTION LABEL B	1	

8.6. PACKING AND ACCESSORIES



Ref. No.	Part No.	Part Name & Description	Pcs/Set	Remarks
P1	F00039U20QP	INSTRUCTION MANUAL	1	
P2	F01029U20SQP	PACKING CASE, PAPER	1	
P3	F01049S30AP	UPPER FILLER	1	
P4	F01059S30AP	LOWER FILLER	1	
P5	F01067F00AP	P. E. BAG	1	
P6	F01078J00XN	DOOR SHEET	1	
P8	F06014T00AP	COOKING TRAY	1	
P9	F01924T00AP	SHEET	1	
P10	F00065G40AP	CAUTION LABEL	1	