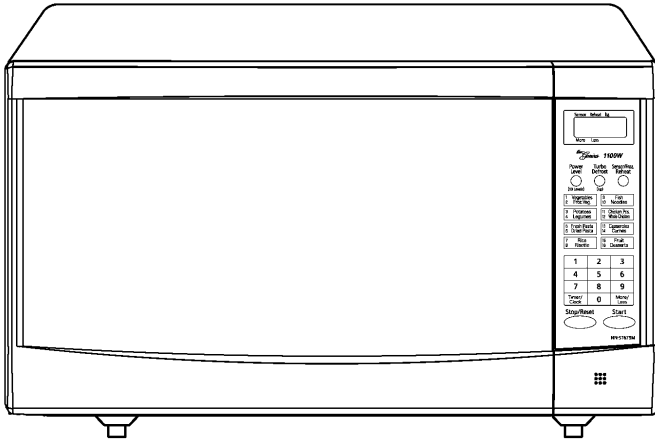


# Service Manual

## Microwave Oven

**NN-ST679M**  
**NN-ST669W**  
**NN-ST659W**

QPQ (Australia & New Zealand)

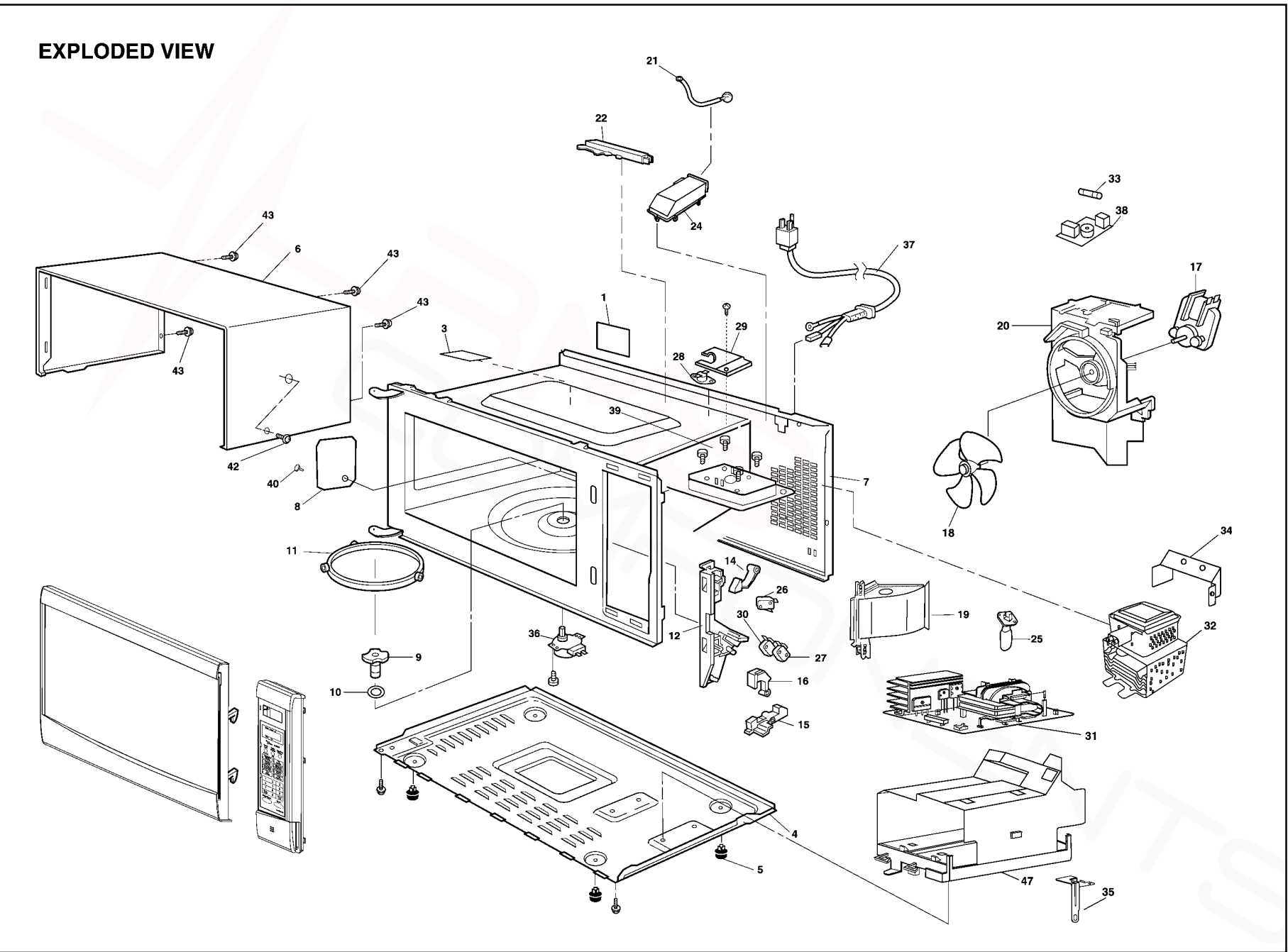


### Specifications:

Specifications:	Models:	ST679M	ST669W	ST659W
Power Source:	230V-240V AC Single Phase, 50Hz			
Power Consumption:	1050W	1050W	1050W	1050W
Output:	1100W	1100W	1100W	1100W
Microwave Frequency:	2450MHz			
Timer:	90 min. 99 sec.			
Outside Dimensions:	518mm(W) X 404mm(D) X 301mm(H)			
Oven Cavity Dimensions:	375mm(W) X 386mm(D) X 225mm(H)			
Weight:	11.8 kg			
PbF	This product with PbF			
Specifications subject to change without notice.				

# 8 EXPLODED VIEW AND PARTS LIST

## 8.1. EXPLODED VIEW



## 8.2. PARTS LIST

**NOTE:**

1. When ordering replacement part(s), please use part number(s) shown in this part list.

Do not use description of the part.

2. Important safety notice:

Components identified by mark have special characteristics important for safety.

When replacing any of these components, use only manufacture's specified parts.

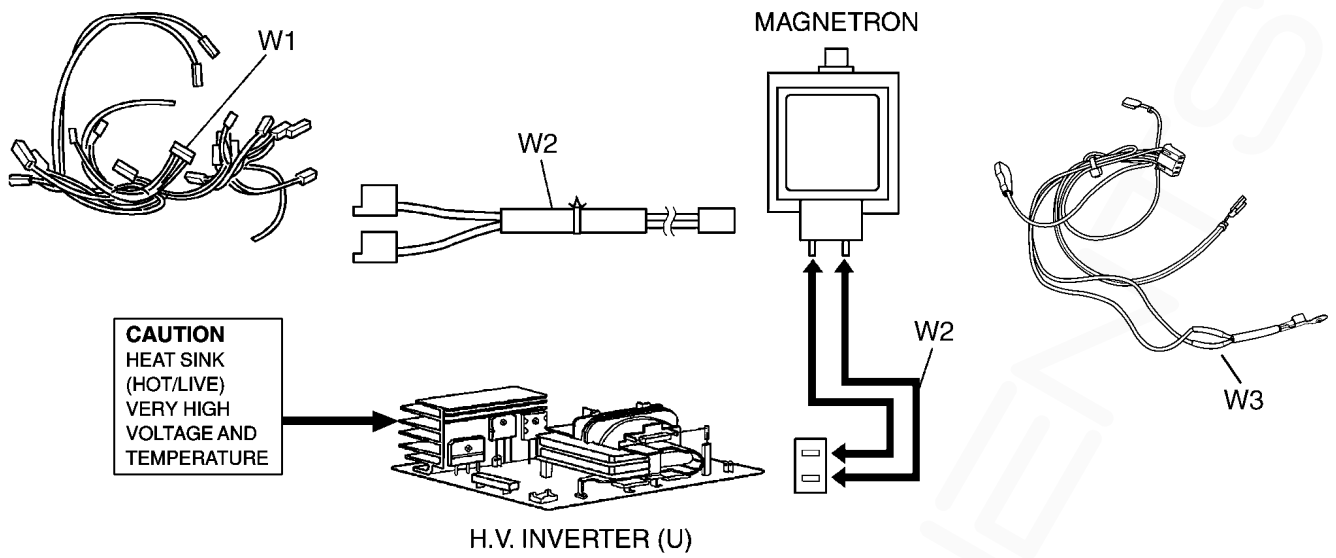
**NOTE:**

"A" parts are supplied by MOBU (Japan)

"F" parts are supplied by PHAMOS (China)

Ref. No.	Part No.	Part Name & Description	Pcs/Set	Remarks
1	F00066V00HP	CAUTION LABEL	1	
3	F21555500AP	OVEN STICKY PAPER	1	
4	F10016K10APG	BASE	1	
5	F10084T00AP	RUBBER FOOT	4	
6	F10095Y60SAP	CABINET BODY (U)	1	ST679M
6	F10095Y30HAP	CABINET BODY (U)	1	ST669W,ST659W
7	△ F200A8F00AP	OVEN (U)	1	ST679M,ST669W
7	△ F200A8F40AP	OVEN (U)	1	ST659W
8	F20555L00AP	COVER	1	
9	F21315Y00AP	PULLY SHAFT	1	
10	F2177-F80	WASHER	1	
11	F290D9330AP	ROLLER RING (U)	1	
12	△ F30206G30AP	DOOR HOOK	1	
14	F31366G30AP	HOOK LEVER A	1	
15	F31376G30AP	HOOK LEVER B	1	
16	F31386G30AP	HOOK LEVER C	1	
17	F400A6V00QP	FAN MOTOR	1	AC240V, SINGLE PHASE, 50Hz
18	F40084T00AP	FAN BLADE	1	
19	F40259J20QP	AIR GUIDE A	1	
20	F41445Y00AP	ORIFICE	1	
21	J607S4T00AP	STEAM SENSOR	1	ST679M,ST669W
22	F64508660AP	SENSOR COVER B	1	ST679M,ST669W
24	F65434W00AP	SENSOR COVER C	1	ST679M,ST669W
25	F612E9C30BP	INCANDESCENT LAMP (U)	1	
26	△ F61425U30XN	MICRO SWITCH	1	(PRIMARY LATCH SWITCH)
27	△ F61415U30XN	MICRO SWITCH	1	(SECONDARY LATCH SWITCH)
28	△ F61455L00CP	THERMAL CUTOUT	1	105°C
29	F66264T00CP	THERMAL CUTOUT INSULATION BRACKET	1	
30	△ F61785U30XN	MICRO SWITCH	1	(SHORT SWITCH)
31	△ F606YM300BP	H.V. INVERTER (U)	1	
32	△ 2M261-M32J3P	MAGNETRON	1	
33	△ F62306V60BP	FUSE	1	10A/240V, 50Hz
34	F40264T60APG	AIR GUIDE B	1	
35	F66626K50AP	GROUNDING PLATE	1	
36	F63265U30XN	TURNTABLE MOTOR	1	
37	△ F900C9J20QP	AC CORD W/PLUG	1	
38	F607X9J20QP	NOISE FILTER (U)	1	
39	XTWFL4+12T	SCREW	4	FOR MAGNETRON
40	XTTFL4+6BN	SCREW	1	FOR COVER
42	XTCAFL4+12AFS	SCREW	1	FOR CABINET BODY SIDE (ST679M)
42	XTCAFA4+12AFW	SCREW	1	FOR CABINET BODY SIDE (ST669W,ST659W)
43	XTWFA4+12D	SCREW	4	FOR CABINET BODY
47	F65856K50AP	INVERTER BRACKET	1	

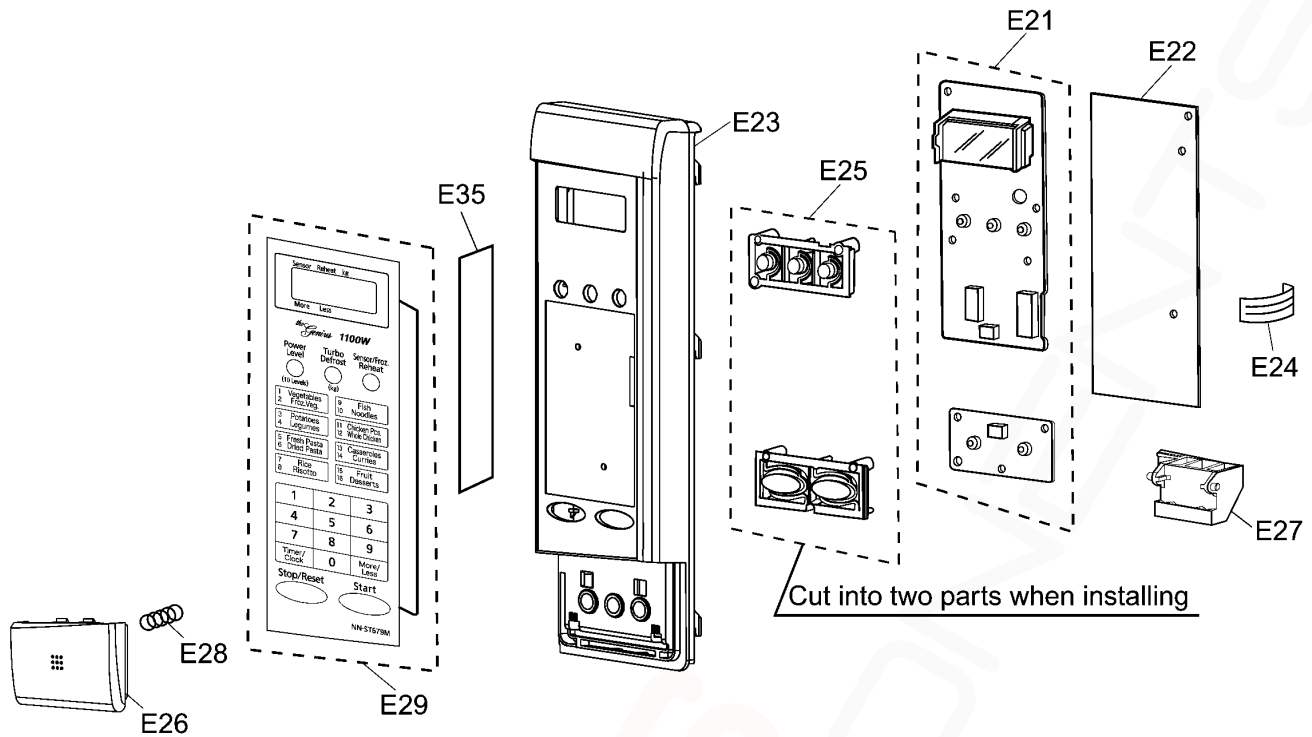
### 8.3. WIRING MATERIALS



Ref. No.	Part No.	Part Name & Description	Pcs/Set	Remarks
W1	F030A9J20QP	LEAD WIRE HARNESS	1	
W2	F030E4T00CP	H.V. LEAD WIRE	1	
W3	F03537D00AP	LEAD WIRE HARNESS U	1	(INCLUDING THERMISTOR)

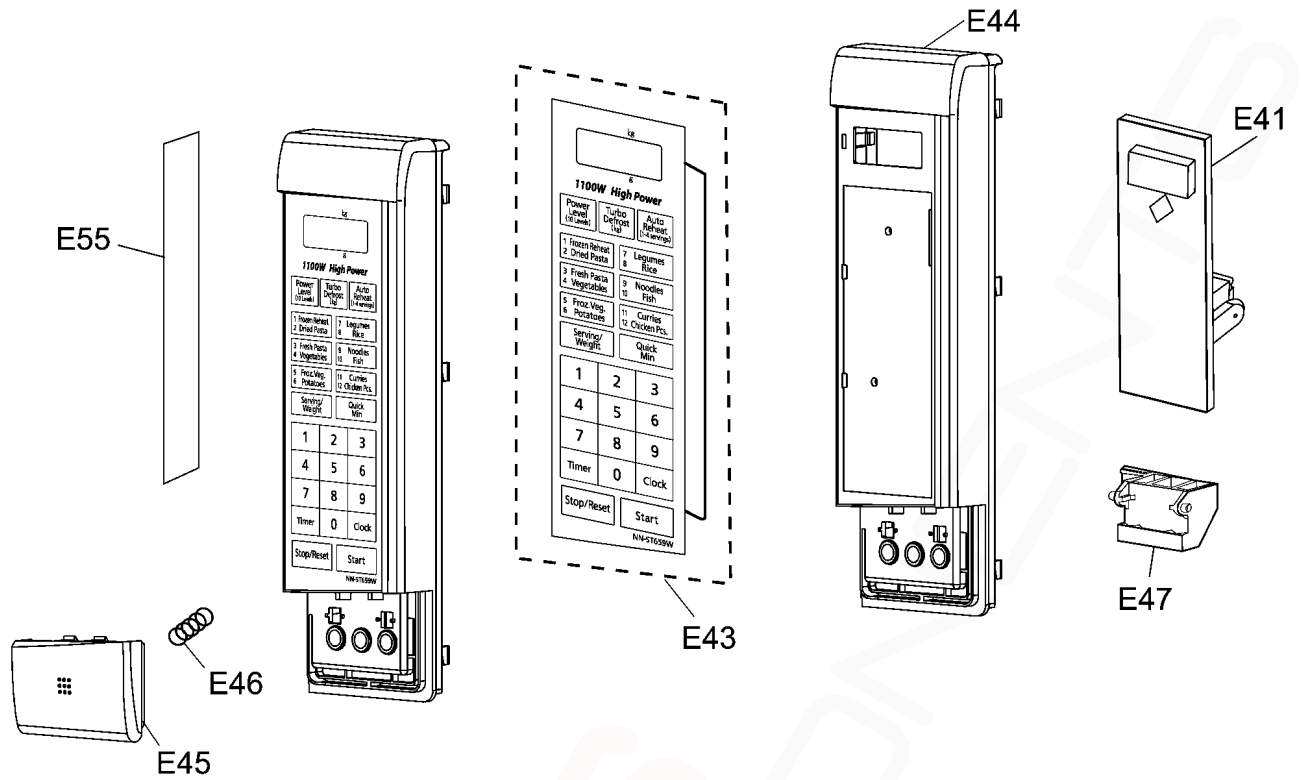
## 8.4. ESCUTCHEON BASE ASSEMBLY

### 8.4.1. NN-ST679M, ST669W



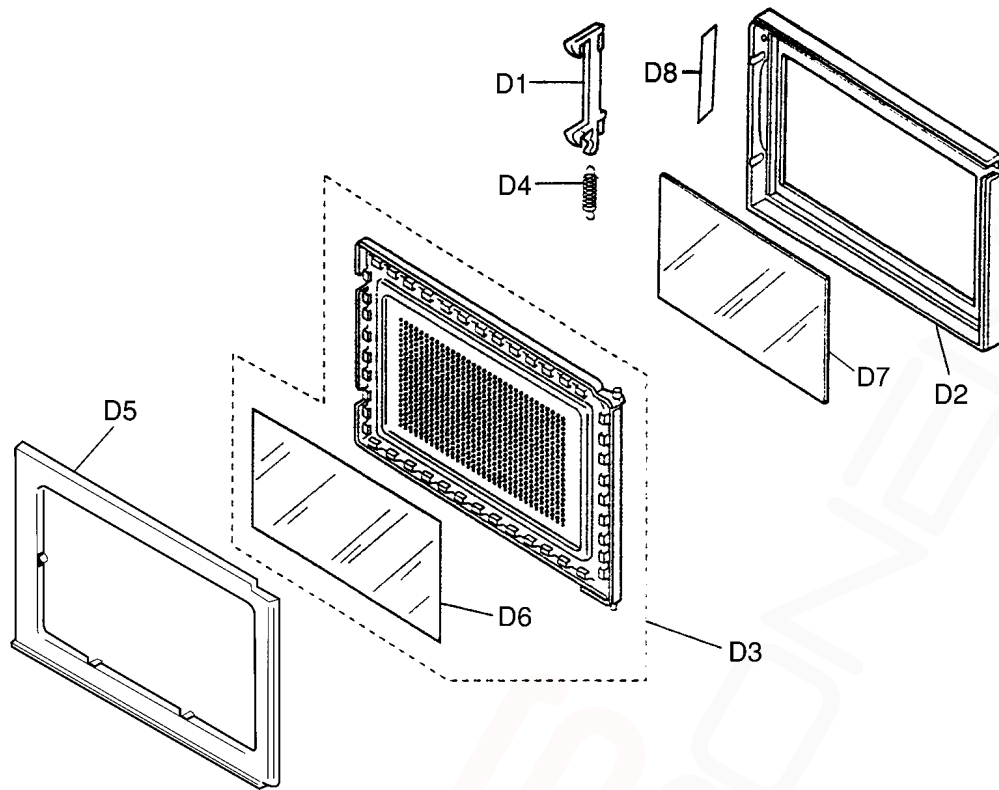
Ref. No.	Part No.	Part Name & Description	Pcs/Set	Remarks
E21	F603L9J20QP	D. P. CIRCUIT (AU)	1	ST679M
E21	F603L9J30QP	D. P. CIRCUIT (AU)	1	ST669W
E22	F603Y9J20QP	D. P. CIRCUIT (DU)	1	ST679M, ST669W
E23	F80348M60SAP	ESCUTCHEON BASE	1	ST679M
E23	F80348M60HAP	ESCUTCHEON BASE	1	ST669W
E24	F66164W20AP	FLAT CABLE	1	ST679M, ST669W
E25	F82988M60KAP	BUTTON	1	ST679M, ST669W
E26	F80728M60SAP	DOOR OPENING BUTTON	1	ST679M
E26	F80728M60HAP	DOOR OPENING BUTTON	1	ST669W
E27	F82566K10AP	DOOR OPENING LEVER	1	
E28	F80375K00AP	COOK BUTTON SPRING	1	
E29	F630Y9J20BQP	MEMBRANE SWITCH (U)	1	ST679M
E29	F630Y9J30BQP	MEMBRANE SWITCH (U)	1	ST669W
E35	F00079J20SQP	NAME PLATE	1	ST679M
E35	F00079J30HQP	NAME PLATE	1	ST669W

8.4.2. NN-ST659W



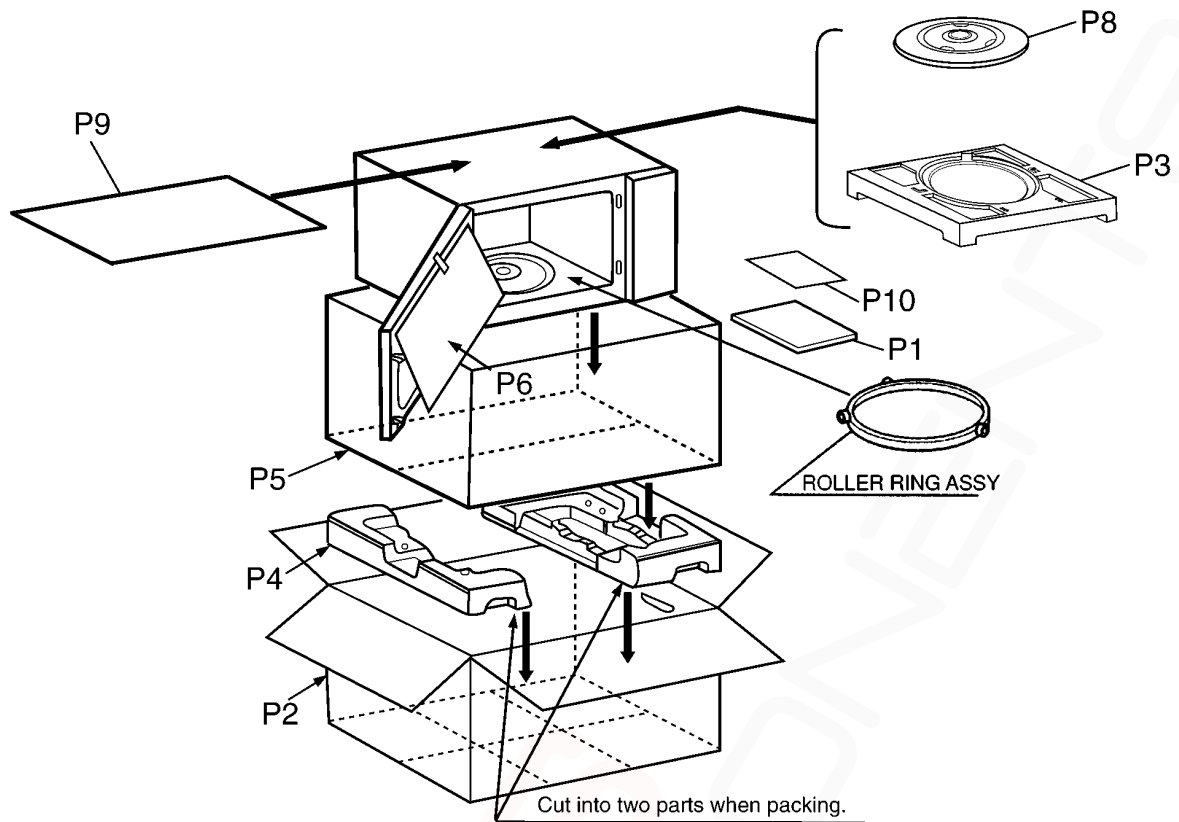
Ref. No.	Part No.	Part Name & Description	Pcs/Set	Remarks
E41	F603L9J40QP	D. P. CIRCUIT (AU)	1	ST659W
E43	F630Y9J40BQP	MEMBRANE SWITCH (U)	1	ST659W
E44	F80348F70HQP	ESCUTCHEON BASE	1	ST659W
E45	F80728F70HQP	DOOR OPENING BUTTON	1	ST659W
E46	F80375K00AP	COOK BUTTON SPRING	1	
E47	F82566K10AP	DOOR OPENING LEVEL	1	
E55	F00079J40HQP	NAME PLATE	1	ST659W

## 8.5. DOOR ASSEMBLY



Ref. No.		Part No.	Part Name & Description	Pcs/Set	Remarks
D1		F30186P40AG	DOOR KEY A	1	
D2	⚠	F301A8F70SQP	DOOR A	1	ST679M
D2	⚠	F301A8F70HQP	DOOR A	1	ST669W, ST659W
D3	⚠	F302K5L00AP	DOOR E (U)	1	
D4		F30216P40AG	DOOR KEY SPRING	1	
D5	⚠	F30858X10AP	DOOR C	1	
D6	⚠	F31456V60XP	DOOR SCREEN A	1	
D7		F31468F70BQP	DOOR SCREEN B	1	
D8		F01726V00JP	CAUTION LABEL B	1	

## 8.6. PACKING AND ACCESSORIES



Ref. No.	Part No.	Part Name & Description	Pcs/Set	Remarks
P1	F00039J20QP	INSTRUCTION MANUAL	1	
P2	F01029J20SQP	PACKING CASE , PAPER	1	ST679M
P2	F01029J30HQP	PACKING CASE , PAPER	1	ST669W
P2	F01029J40HQP	PACKING CASE , PAPER	1	ST659W
P3	F01046K50AP	UPPER FILLER	1	
P4	F01055L00AP	LOWER FILLER	1	
P5	F01068100XN	P.E. BAG	1	
P6	F01078J00XN	DOOR SHEET	1	
P8	A06014T00AP	COOKING TRAY	1	
P9	F01924T00AP	SHEET	1	
P10	F00065G40AP	CAUTION LABEL	1	