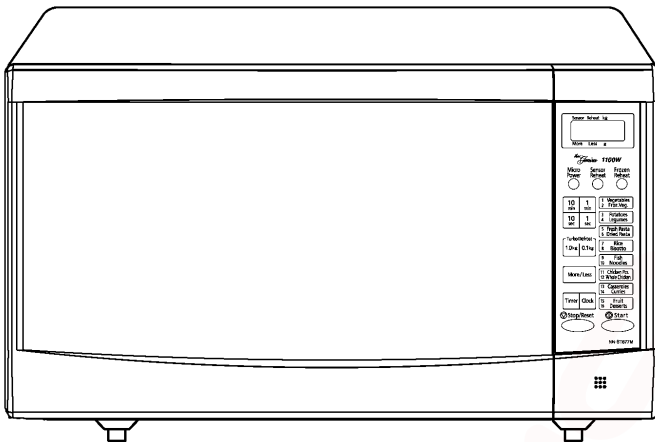


Service Manual

Microwave Oven

Simplified



NN-ST657S
NN-ST677M
NN-ST667W
NN-ST657W

QPQ(Australia & New Zealand)

Please file and use this manual together with the service manual for Model NN-S560WF (ORDER NO. SIMMC0006012C3)

Specifications:

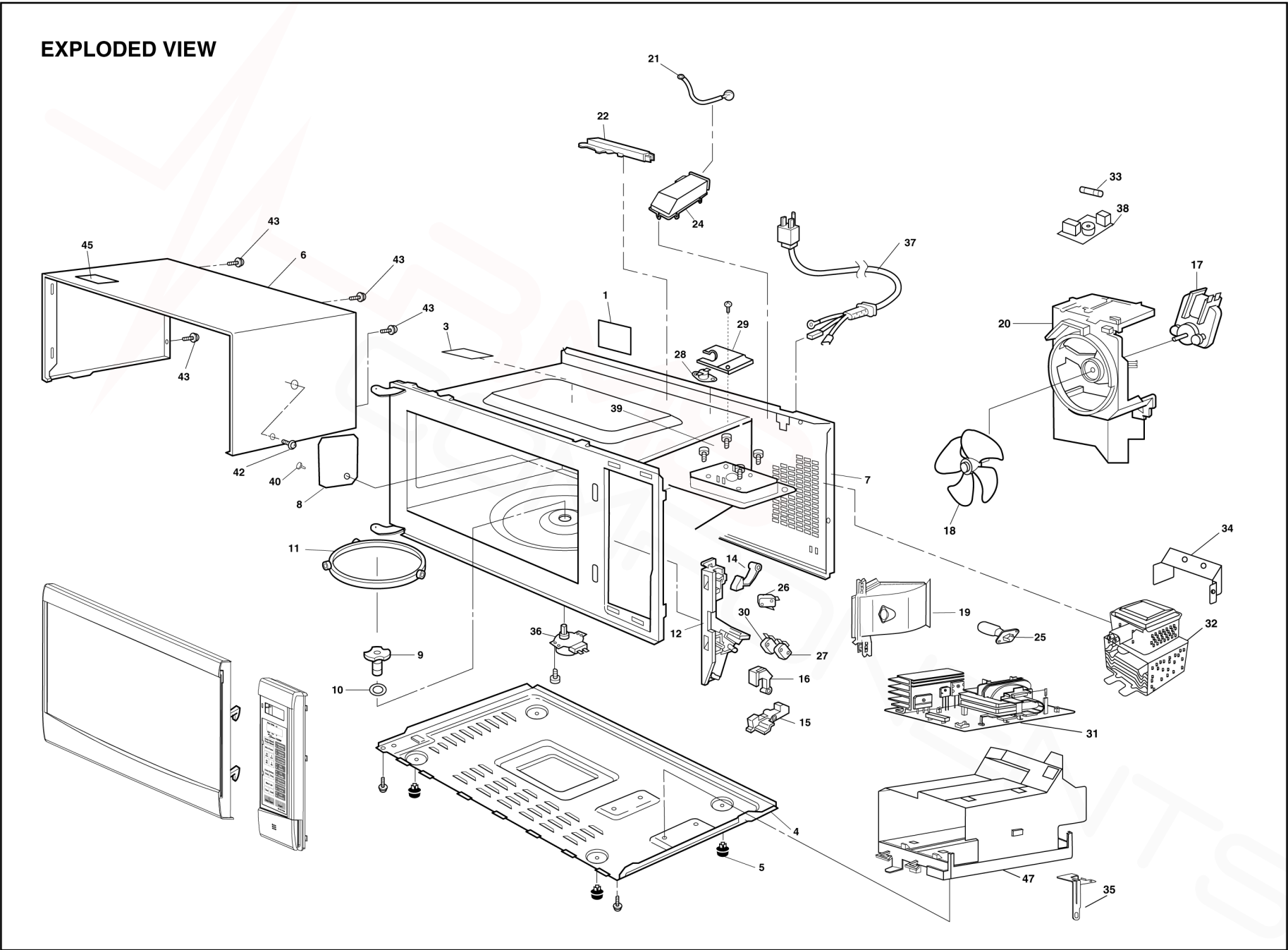
Specifications:	Models:	ST657S	ST677M	ST667W	ST657W
Power Source:	230V-240V AC Single Phase, 50Hz				
Power Requirement:	1050W				
Output:	1100W				
Microwave Frequency:	2450MHz				
Timer:	90 min. 99 sec.				
Outside Dimensions:	518mm(W) X 404mm(D) X301mm(H)				
Oven Cavity Dimensions:	375mm(W) X 386mm(D) X 225mm(H)				
Weight:	11.8 kg				
PbF	This product with PbF				
Specifications subject to change without notice.					

Panasonic®

© 2007 Panasonic Home Appliances Microwave Oven (Shanghai) Co., Ltd. All rights reserved. Unauthorized copying and distribution is a violation of law.

5 EXPLODED VIEW AND PARTS LIST

5.1. EXPLODED VIEW



5.2. PARTS LIST

NOTE:

1. When ordering replacement part(s), please use part number(s) shown in this part list.

Do not use description of the part.

2. Important safety notice:

Components identified by mark have special characteristics important for safety.

When replacing any of these components, use only manufacture's specified parts.

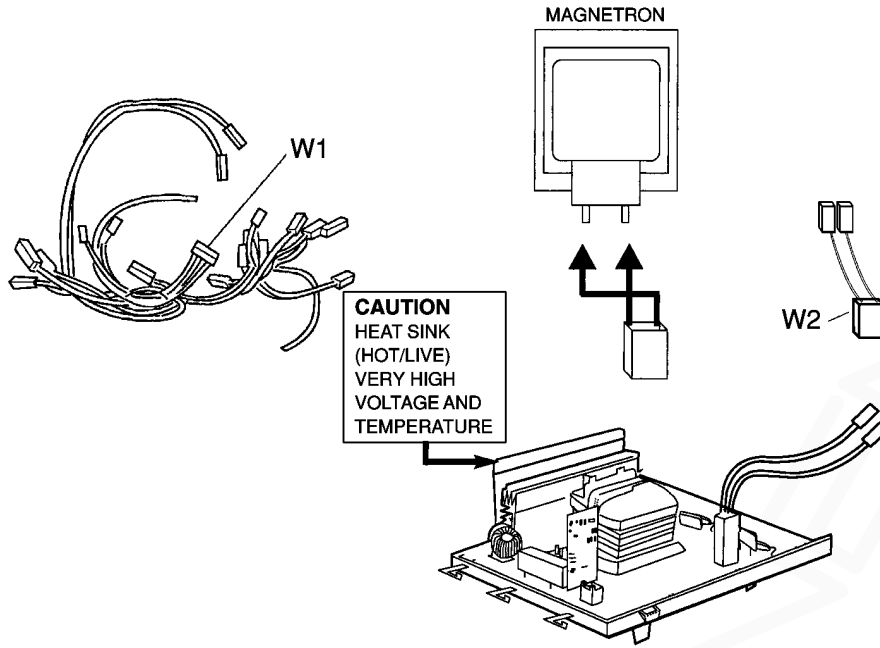
NOTE:

"A" parts are supplied by MOBU (Japan)

"F" parts are supplied by PHAMOS (China)

Ref. No.		Part No.	Part Name & Description	Pcs/Set	Remarks
1		F00066V00HP	CAUTION LABEL	1	
3		F21555500AP	OVEN STICKY PAPER	1	
4		F10016K10APG	BASE	1	
5		F10084T00AP	RUBBER FOOT	4	
6		F110D5Y60SAP	CABINET BODY (U)	1	ST657S, ST667M
6		F110D5Y30HCP	CABINET BODY (U)	1	ST667W, ST657W
7	△	F200A8F00AP	OVEN (U)	1	ST677M, ST667W
7	△	F200A8F40AP	OVEN (U)	1	ST657S, ST657W
8		F20555L00AP	COVER	1	
9		F21315Y00AP	PULLY SHAFT	1	
10		F2177-F80	WASHER	1	
11		F290D9330AP	ROLLER RING (U)	1	
12	△	F3020-1200	DOOR HOOK	1	ST657S
12	△	F30206G30AP	DOOR HOOK	1	ST677M, ST667W, ST657W
14		F3136-1200	HOOK LEVER A	1	ST657S
14		F31366G30AP	HOOK LEVER A	1	ST677M, ST667W, ST657W
15		F31374650AP	HOOK LEVER B	1	ST657S
15		F31376G30AP	HOOK LEVER B	1	ST677M, ST667W, ST657W
16		F31384650AP	HOOK LEVER C	1	ST657S
16		F31386G30AP	HOOK LEVER C	1	ST677M, ST667W, ST657W
17		F400A6V00QP	FAN MOTOR	1	AC240V, SINGLE PHASE, 50Hz
18		F40084T00AP	FAN BLADE	1	
19		F40257D00APG	AIR GUIDE A	1	
20		F41445Y00AP	ORIFICE	1	
21		A707S4T00AP	STEAM SENSOR	1	ST677M, ST667W
22		F64508660AP	SENSOR COVER B	1	ST677M, ST667W
24		F65434W00AP	SENSOR COVER C	1	ST677M, ST667W
25		F612E8F60QP	INCANDESCENT LAMP (U)	1	
26	△	J61415G10XN	MICRO SWITCH	1	(PRIMARY LATCH SWITCH) (V-15G-3C25)
27	△	J61414T00AP	MICRO SWITCH	1	(SECONDARY LATCH SWITCH) (D3V-16G-3C25)
28	△	F61455L00CP	THERMAL CUTOUT	1	105°C
29		F66264T00CP	THERMAL CUTOUT INSULATION BRACKET	1	
30	△	F61785U30XN	MICRO SWITCH	1	(SHORT SWITCH) (D3V-1G-2C25)
31	△	F606YM300BP	H.V. INVERTER (U)	1	
32	△	2M261-M32J3P	MAGNETRON	1	
33	△	F62306V60BP	FUSE	1	10A/240V, 50Hz
34		F40264T60APG	AIR GUIDE B	1	
35		F66626K50AP	GROUNDING PLATE	1	
36		F63265U30XN	TURNTABLE MOTOR	1	
37	△	F900C9660QP	AC CORD W/PLUG	1	
38		F692Y8A00QP	NOISE FILTER (U)	1	
39		XTWFA4+12T	SCREW	4	FOR MAGNETRON
40		XTTFA4+6BN	SCREW	1	FOR COVER
42		XTCAFA4+12AFM	SCREW	1	FOR CABINET BODY SIDE (ST657S)
42		XTCAFA4+12AFS	SCREW	1	FOR CABINET BODY SIDE (ST677M)
42		XTCAFA4+12AFW	SCREW	1	FOR CABINET BODY SIDE (ST667W, ST657W)
43		XTWFA4+12D	SCREW	4	FOR CABINET BODY
45		F02445Y00AP	CAUTION LABEL	1	ST657S
47		F65856K50AP	INVERTER BRACKET	1	

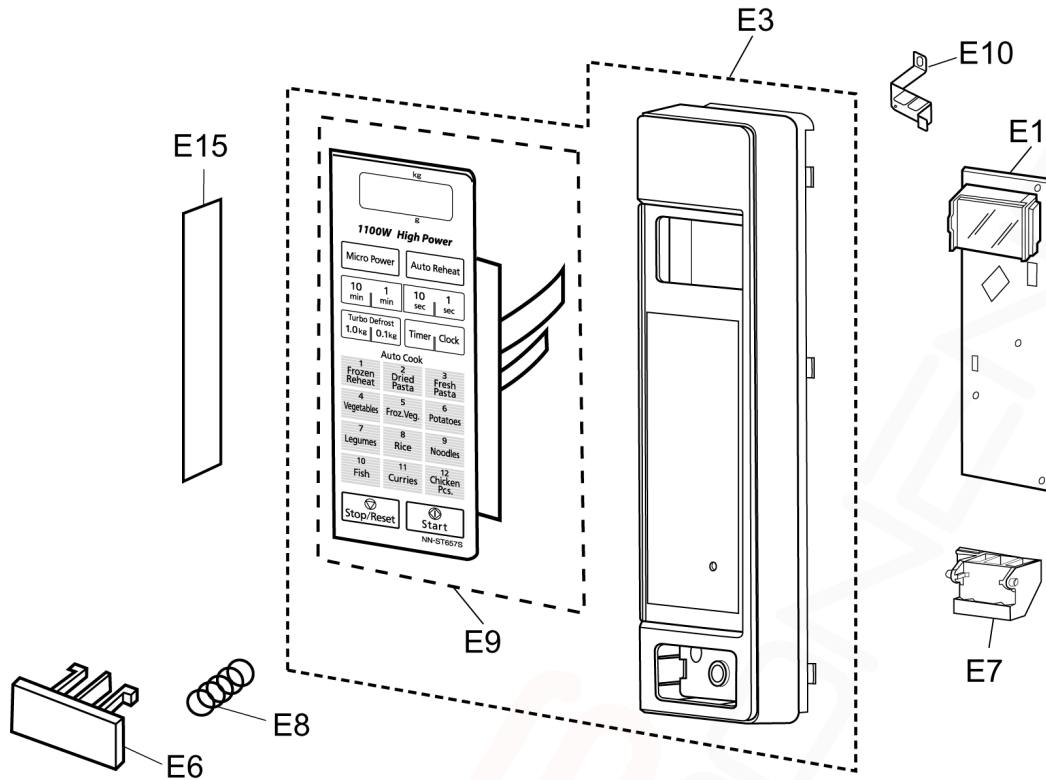
5.3. WIRING MATERIALS



Ref. No.	Part No.	Part Name & Description	Pcs/Set	Remarks
W1	F030A8V00QP	LEAD WIRE HARNESS	1	
W2	F030E4T00CP	H.V.LEAD WIRE	1	

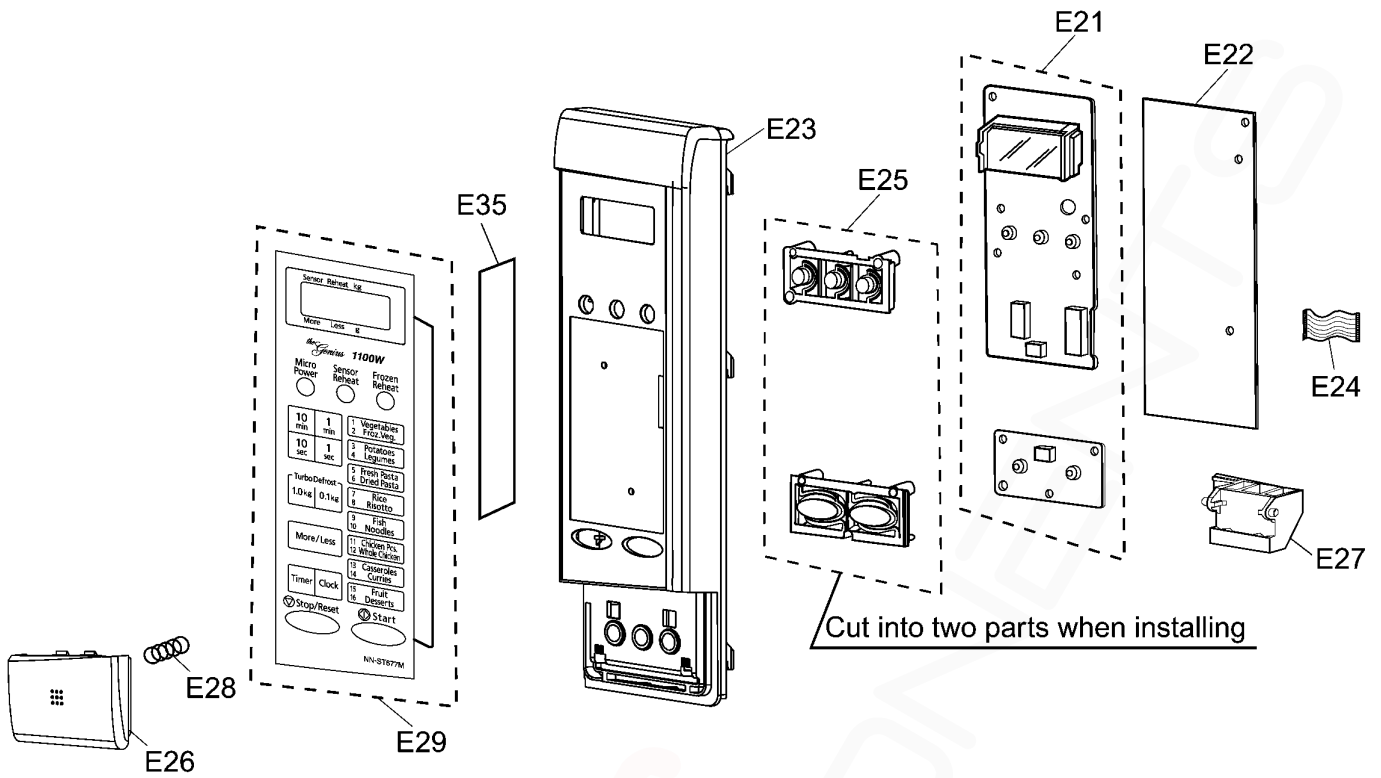
5.4. ESCUTCHEON BASE ASSEMBLY

5.4.1. NN-ST657S



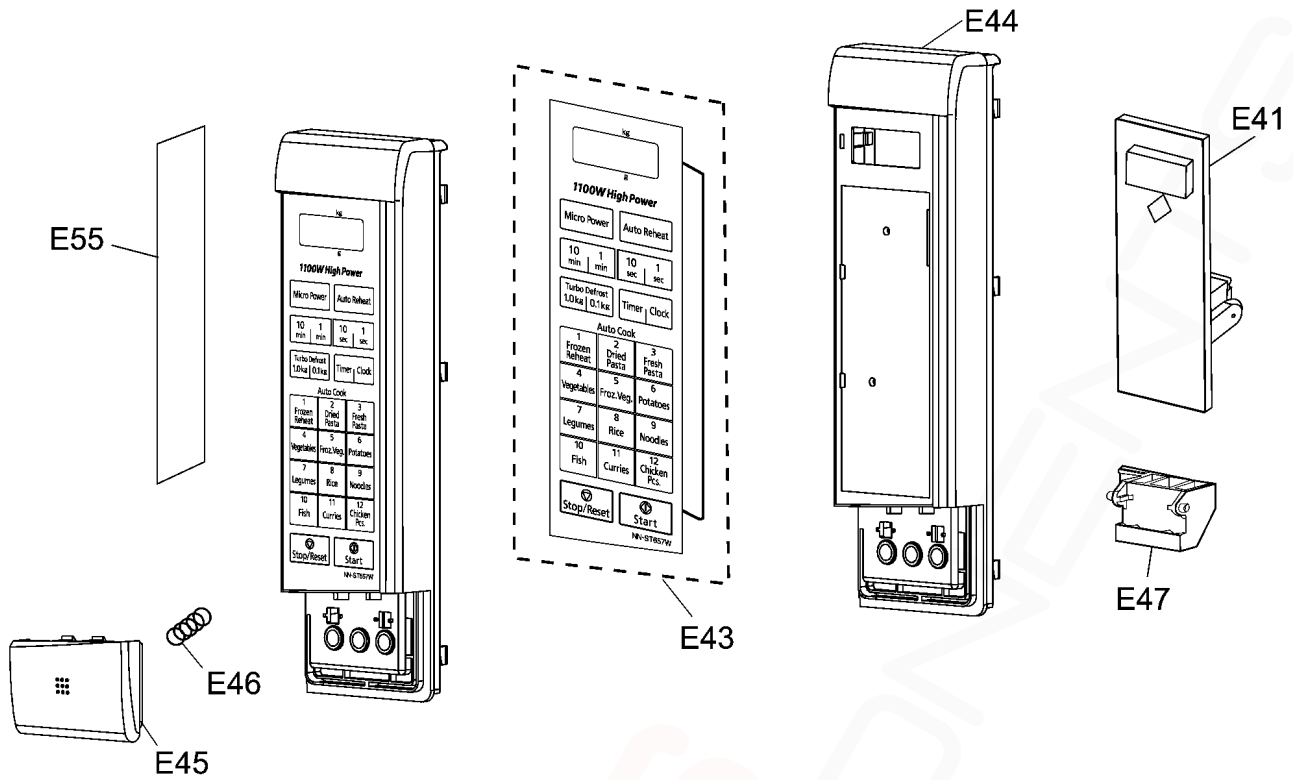
Ref. No.	Part No.	Part Name & Description	Pcs/Set	Remarks
E1	F603L8V00QP	D.P. CIRCUIT (AU)	1	ST657S
E3	F800L8V00SQP	ESCUTCHEON BASE (U)	1	ST657S
E6	F80725Y00SAP	DOOR OPENING BUTTON (U)	1	ST657S
E7	F82565Y00AP	DOOR OPENING LEVEL	1	ST657S
E8	F80375K00AP	COOK BUTTON SPRING	1	
E9	F630Y8V00BQP	MEMBRANE SWITCH (U)	1	ST657S
E10	F90095X00AP	GROUNDING PANEL	1	ST657S
E15	F00078V00SQP	NAME PLATE	1	ST657S

5.4.2. NN-ST677M, ST667W



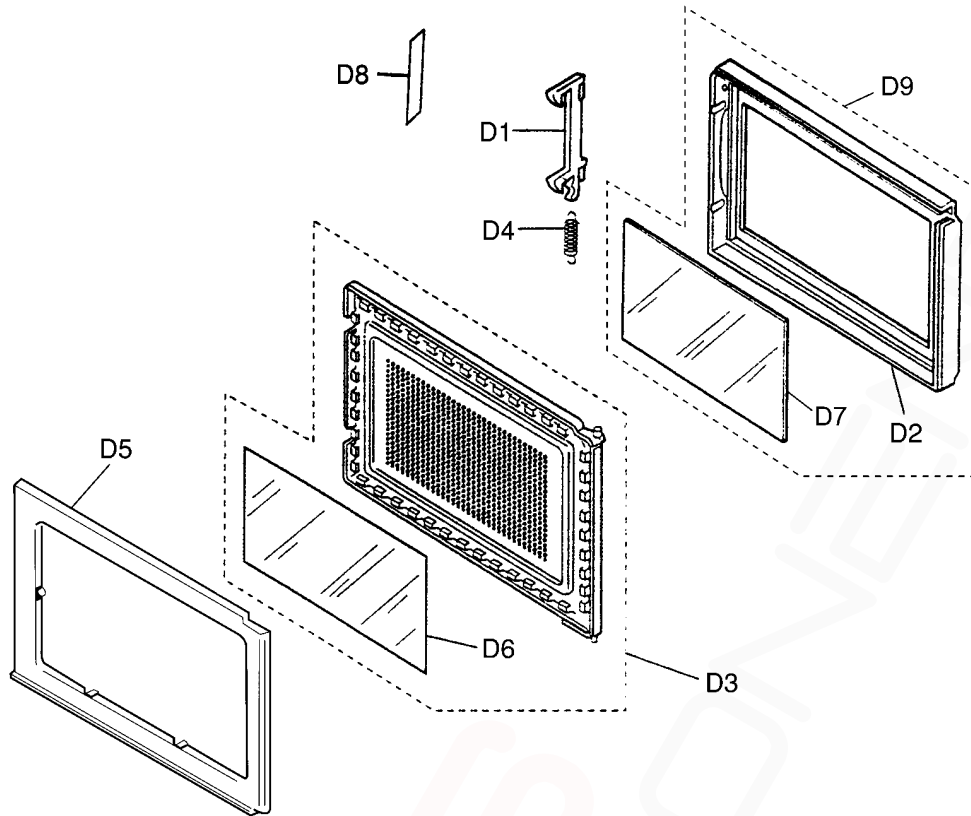
Ref. No.	Part No.	Part Name & Description	Pcs/Set	Remarks
E21	F603L8V10QP	D.P.CIRCUIT (AU)	1	ST677M
E21	F603L8V20QP	D.P.CIRCUIT (AU)	1	ST667W
E22	F603Y8V10QP	D.P.CIRCUIT (DU)	1	ST677M, ST667W
E23	F80348M60SAP	ESCUTCHEON BASE	1	ST677M
E23	F80348M60HAP	ESCUTCHEON BASE	1	ST667W
E24	F66164W20AP	FLAT CABLE	1	ST677M, ST667W
E25	F82988M60KAP	BUTTON	1	ST677M, ST667W
E26	F80728M60SAP	DOOR OPENING BUTTON	1	ST677M
E26	F80728M60HAP	DOOR OPENING BUTTON	1	ST667W
E27	F82566K10AP	DOOR OPENING LEVER	1	ST677M, ST667W
E28	F80375K00AP	COOK BUTTON SPRING	1	
E29	F630Y8V10BQP	MEMBRANE SWITCH (U)	1	ST677M
E29	F630Y8V20BQP	MEMBRANE SWITCH (U)	1	ST667W
E35	F00078V10SQP	NAME PLATE	1	ST677M
E35	F00078V20HQP	NAME PLATE	1	ST667W

5.4.3. ST657W



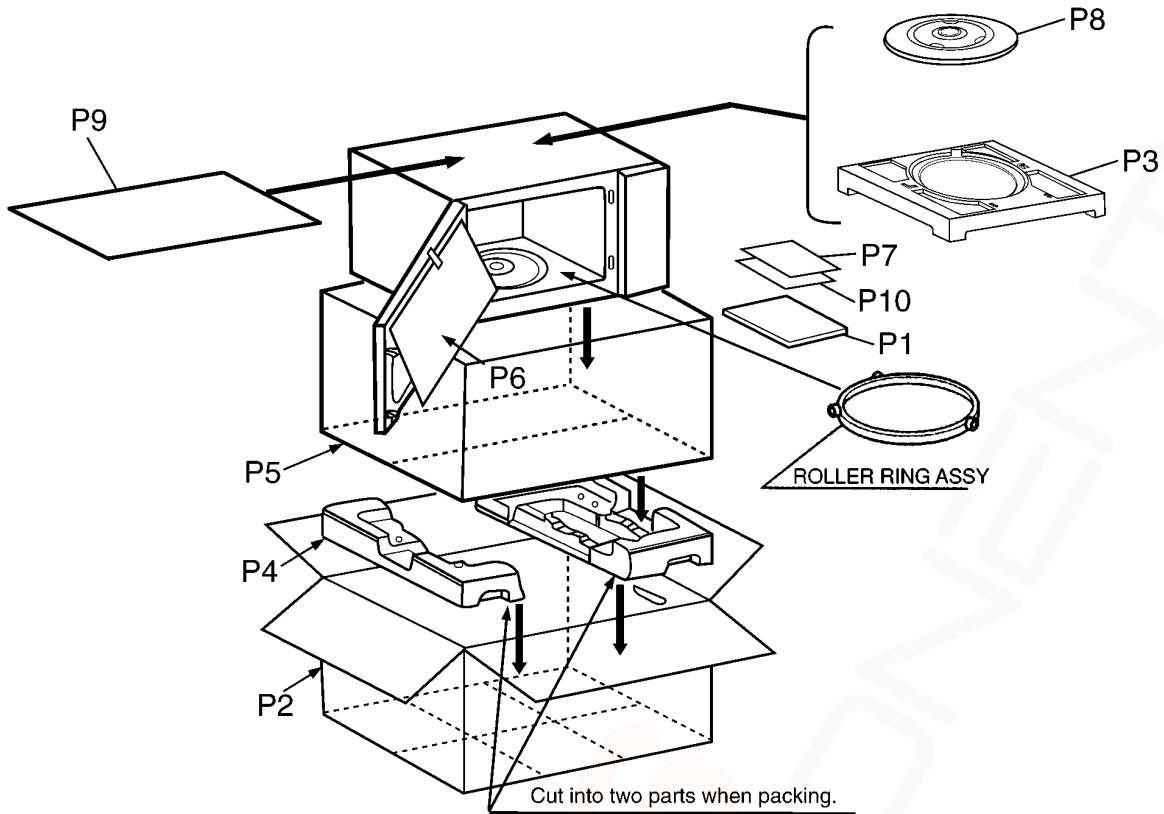
Ref. No.	Part No.	Part Name & Description	Pcs/Set	Remarks
E41	F603L8V00QP	D.P. CIRCUIT (AU)	1	ST657W
E43	F630Y8V30BQP	MEMBRANE SWITCH (U)	1	ST657W
E44	F80348F70HQP	ESCUTCHEON BASE	1	ST657W
E45	F80728F70HQP	DOOR OPENING BUTTON	1	ST657W
E46	F80375K00AP	COOK BUTTON SPRING	1	
E47	F82566K10AP	DOOR OPENING LEVEL	1	ST657W
E55	F00078V30HQP	NAME PLATE	1	ST657W

5.5. DOOR ASSEMBLY



Ref. No.		Part No.	Part Name & Description	Pcs/Set	Remarks
D1		F30186P40AG	DOOR KEY A	1	
D2	⚠	F301A8F70SQP	DOOR A	1	ST677M
D2	⚠	F301A8F70HQP	DOOR A	1	ST667W, ST657W
D3	⚠	F302K5L00AP	DOOR E (U)	1	
D4		F30216P40AG	DOOR KEY SPRING	1	
D5	⚠	F30854T00AP	DOOR C	1	
D6	⚠	F31456V60XP	DOOR SCREEN A	1	
D7		F31468F70BQP	DOOR SCREEN B	1	ST677M, ST667W, ST657W
D8		F01726V00JP	CAUTION LABEL B	1	
D9	⚠	F301A8V00SQP	DOOR A (U)	1	ST657S

5.6. PACKING AND ACCESSORIES



Ref. No.	Part No.	Part Name & Description	Pcs/Set	Remarks
P1	F00038V00QP	INSTRUCTION MANUAL	1	
P2	F01028V00SQP	PACKING CASE, PAPER	1	ST657S
P2	F01028V10SQP	PACKING CASE, PAPER	1	ST677M
P2	F01028V20HQP	PACKING CASE, PAPER	1	ST667W
P2	F01028V30HQP	PACKING CASE, PAPER	1	ST657W
P3	F01046K50AP	UPPER FILLER	1	
P4	F01055L00AP	LOWER FILLER	1	
P5	F01067F00AP	P.E. BAG	1	ST657S
P5	F01068100XN	P.E. BAG	1	ST677M, ST667W, ST657W
P6	F01078J00XN	DOOR SHEET	1	
P7	F00166V20QP	NOTICE	1	ST657S
P8	F06014T00AP	COOKING TRAY	1	
P9	F01924T00AP	SHEET	1	ST657S
P10	F00065G40AP	CAUTION LABEL	1	