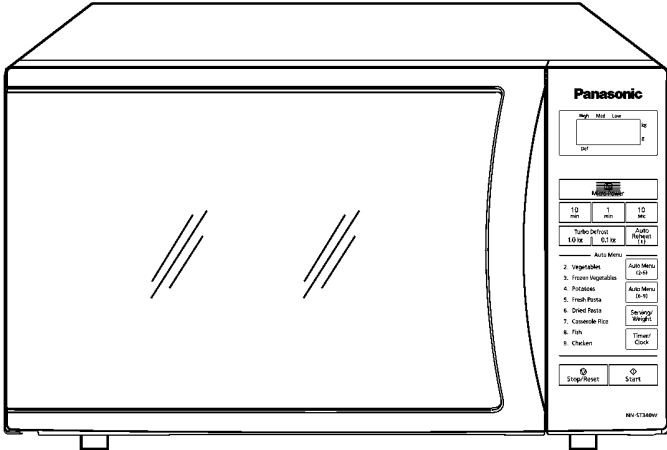


Service Manual

Microwave Oven

NN-ST340W

QPQ (Australia & New Zealand)

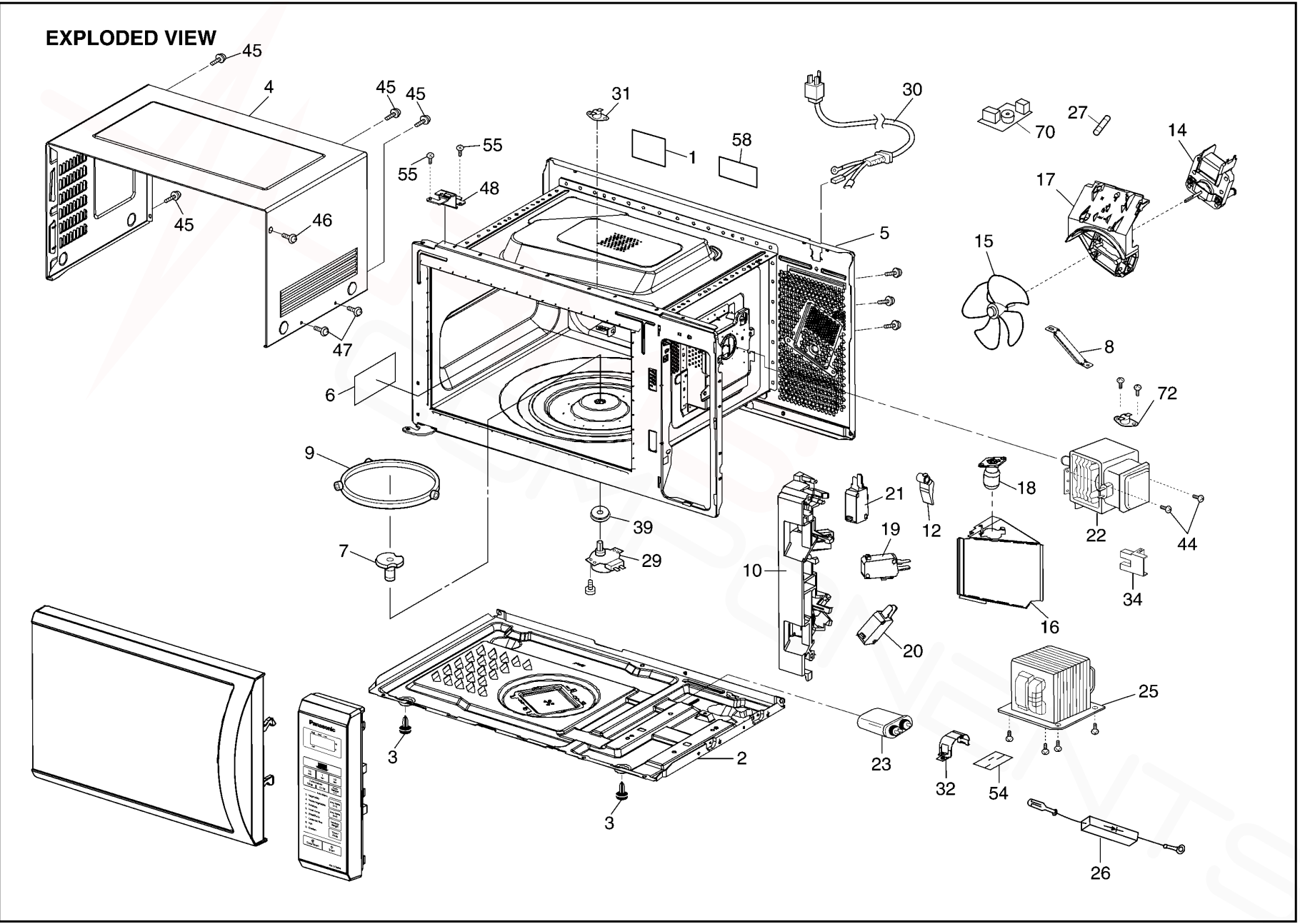


Specifications:

Model:	NN-ST340W
Specifications:	
Power Source:	230~240V AC Single Phase, 50Hz
Power Consumption:	1300W
Output:	800W
Microwave Frequency:	2450MHz
Timer:	30 Min. / Stage (HIGH Power Level) ~ 3 Stage Maximum 99 Min. 50 Sec. / Stage (Other Power Level) ~ 3 Stage Maximum
Outside Dimensions:	488mm(W) x 279mm(H) x 405mm(D)
Oven Cavity Dimensions:	315mm(W) x 206mm(H) x 353mm(D)
Net Weight:	12.5 kg
PbF	This product with PbF
Specifications subject to change without notice.	

10 EXPLODED VIEW AND PARTS LIST

10.1. EXPLODED VIEW



10.2. PARTS LIST

NOTE:

1. When ordering replacement part(s), please use part number(s) shown in this part list.

Do not use description of the part.

2. Important safety notice:

Components identified by mark have special characteristics important for safety.

When replacing any of these components, use only manufacture's specified parts.

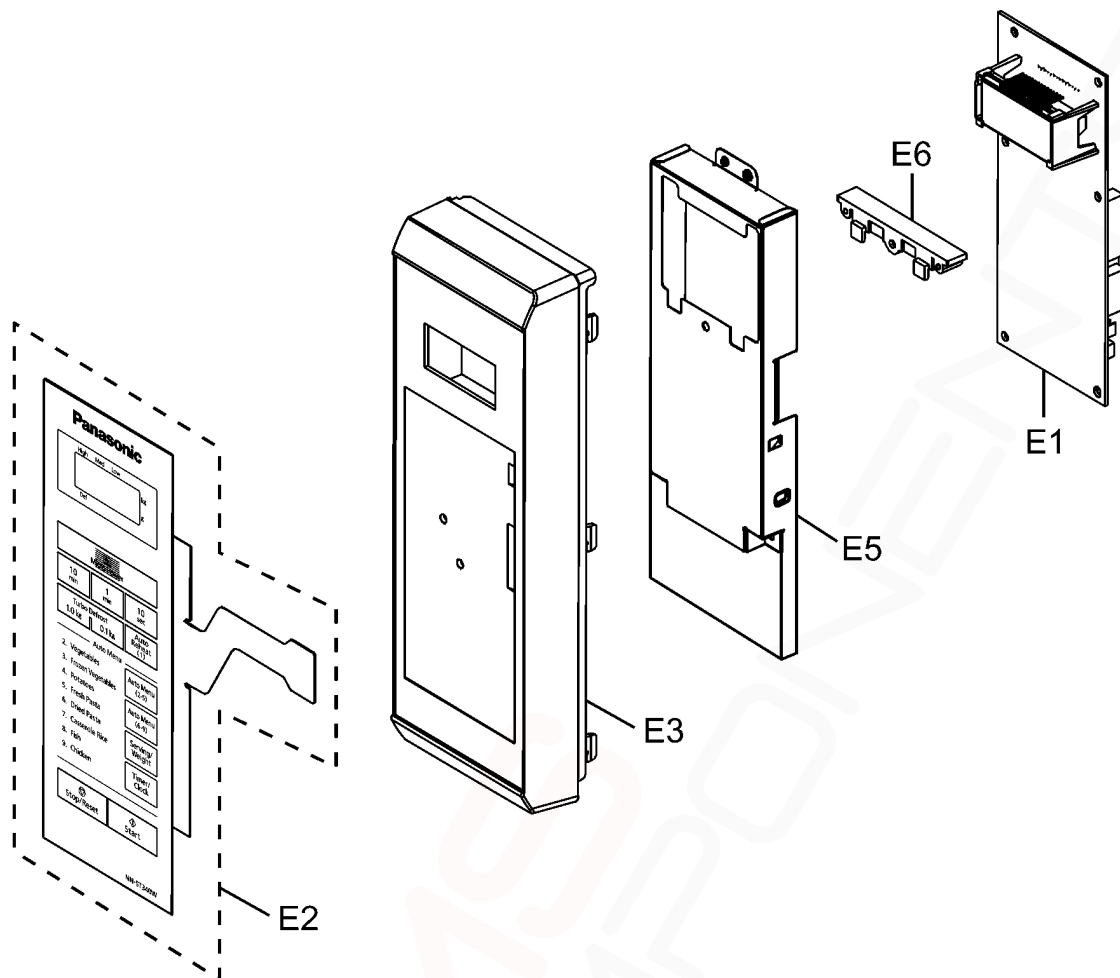
NOTE:

"A" parts are supplied by MOBU (Japan)

"F" parts are supplied by PHAMOS (China)

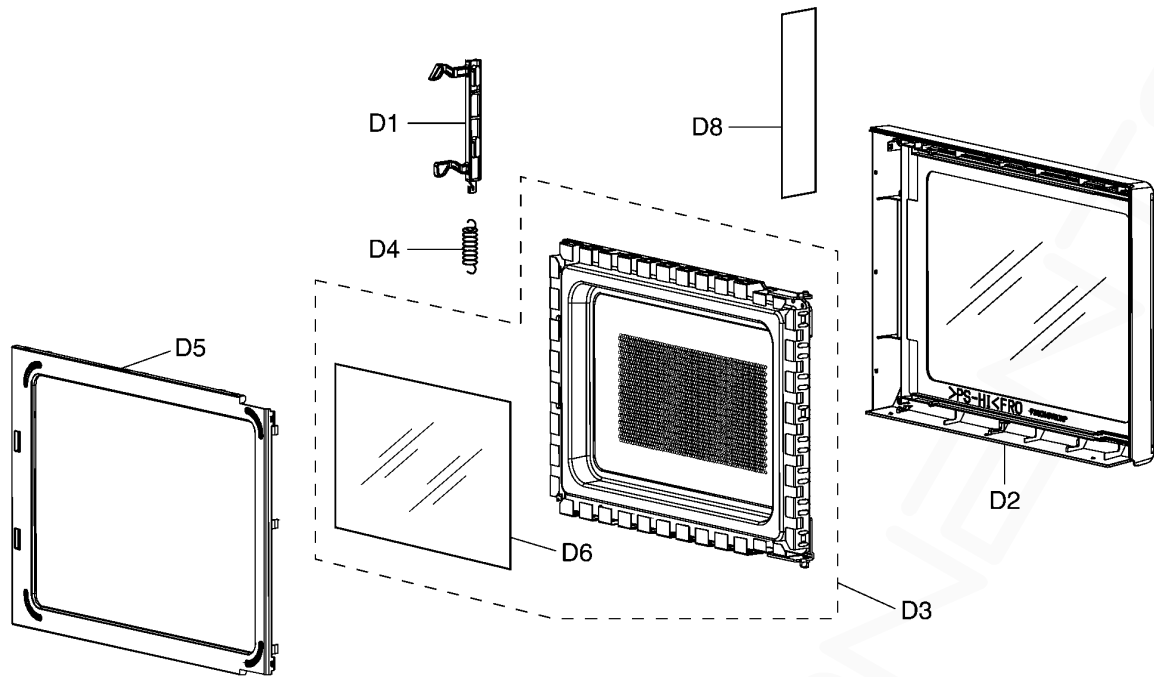
Ref. No.	Part No.	Part Name & Description	Pcs/Set	Remarks
1	F01579V30HQP	NAME PLATE	1	
2	F10019V00XP	BASE	1	
3	F10084T00APS	RUBBER FOOT	2	
4	F10099V00HXP	CABINET BODY	1	
5	△ F200A9V00XP	OVEN	1	
6	F20559V00XP	COVER	1	
7	F21316E70XP	PULLY SHAFT	1	
8	F20349V00XP	SUPPORTER	1	
9	F290D9W00XP	ROLLER RING (U)	1	
10	△ F30209V10XP	DOOR HOOK	1	
12	F31369V00XP	HOOK LEVER A	1	
14	F400A9W40YP	FAN MOTOR	1	
15	F4008-1N00	FAN BLADE	1	
16	F40259V00XP	AIR GUIDE A	1	
17	F41449V00XP	ORIFICE	1	
18	F612E7X50BP	INCANDESCENT LAMP (U)	1	
19	△ F61425U30XN	MICRO SWITCH B	1	(PRIMARY LATCH SWITCH)
20	△ F61415U30XN	MICRO SWITCH A	1	(SECONDARY LATCH SWITCH)
21	△ F61785U30XN	SHORT SWITCH	1	(SHORT SWITCH)
22	△ 2M210-M36R	MAGNETRON	1	
23	△ F60909V30HP	H.V. CAPACITOR	1	(0.94μF/2100V)
25	△ F621B9V30YP	H.V. TRANSFORMER	1	
26	△ F62025G10XN	DIODE	1	
27	△ F62309W40HP	FUSE	1	10A
29	F63266S30XP	TURNTABLE MOTOR	1	
30	△ F900C9V30QP	AC CORD W/PLUG	1	
31	△ F61459V00XP	THERMAL CUTOUT	1	130°C OPEN, -20°C CLOSE
32	F60379V00XP	CAPACITOR BRACKET	1	
34	F60706S10XP	INSULATE BRACKET	1	
39	F21766S10XP	SEAL	1	
44	XTWFL4+12T	SCREW	2	FOR MAGNETRON
45	XTWBFE4+8D	SCREW	4	FOR CABINET BODY
46	XTC4+10BFN	SCREW	1	FOR CABINET BODY SIDE (UPPER SIDE)
47	XTTFL4+6BN	SCREW	2	FOR CABINET BODY SIDE (LOWER SIDE)
48	F30069V00XP	HINGE A	1	
54	F60709V00XP	INSULATION SHEET	1	
55	XTWFA4+12LR	SCREW	2	FOR HINGE A
58	F00066V00HP	CAUTION LABEL	1	
70	F692Y9W40ZP	NOISE FILTER (U)	1	
72	△ F61456S10XP	THERMAL CUTOUT	1	180°C OPEN, 60°C CLOSE

10.3. ESCUTCHEON BASE ASSEMBLY



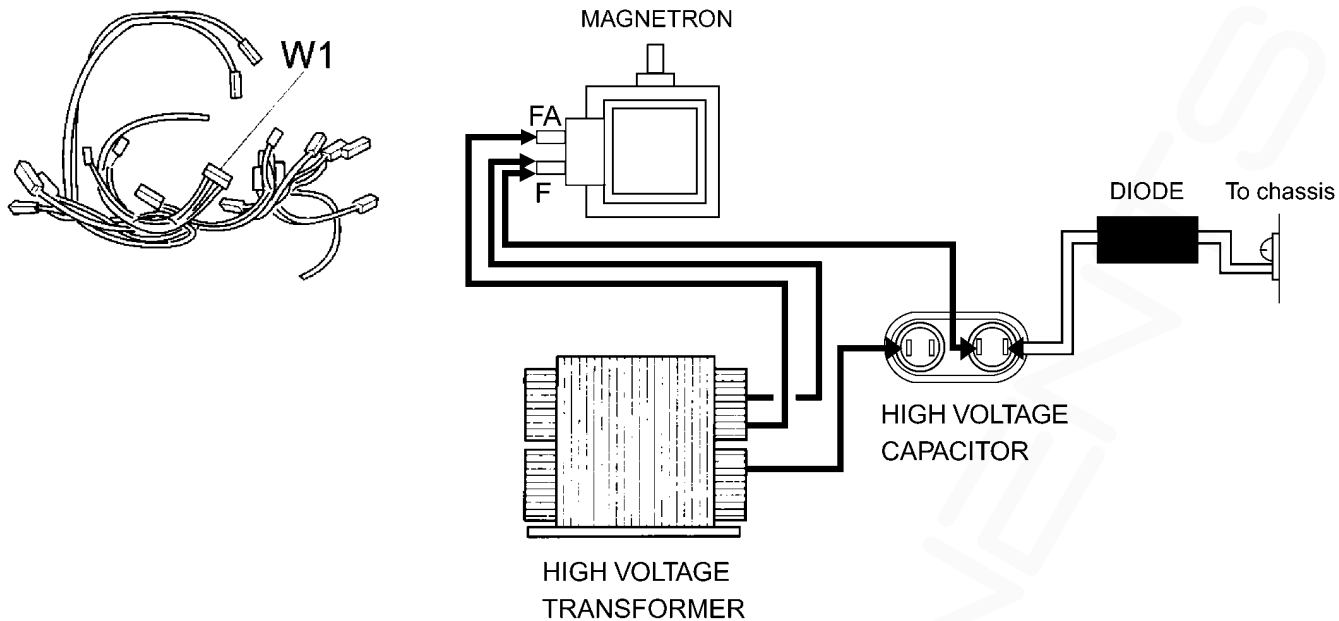
Ref. No.	Part No.	Part Name & Description	Pcs/Set	Remarks
E1	F603L9V30QP	D.P.CIRCUIT (AU)	1	
E2	F630Y9V30BQP	MEMBRANE SWITCH	1	
E3	F80349V30HHP	ESCUTCHEON BASE	1	
E5	F81279V30AP	BACK PLATE	1	
E6	F66139V30HP	BACKSTOP	1	

10.4. DOOR ASSEMBLY



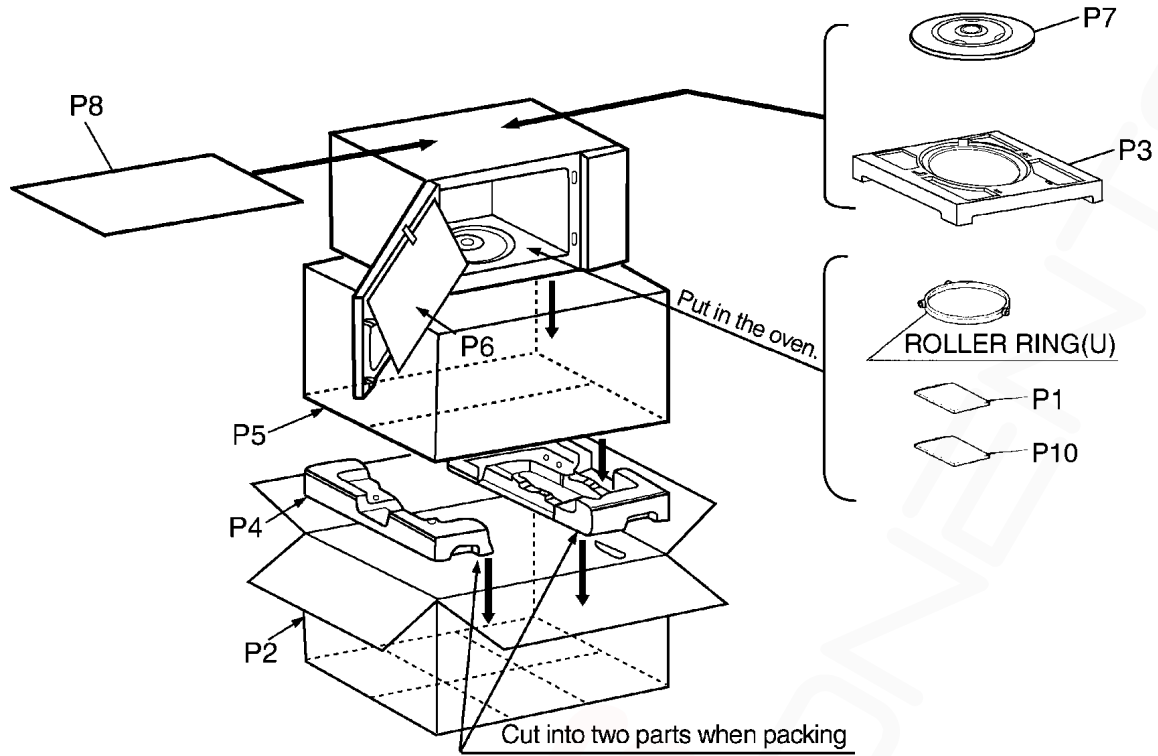
Ref. No.		Part No.	Part Name & Description	Pcs/Set	Remarks
D1		F30189V00XP	DOOR KEY A	1	
D2	⚠	F302A9V00HXP	DOOR A (U)	1	
D3	⚠	F302K9V00XP	DOOR E (U)	1	
D4		F30215G10XN	DOOR KEY SPRING	1	
D5	⚠	F30859V00XP	DOOR C	1	
D6	⚠	F31459W00XP	DOOR SCREEN A	1	
D8		F01729660JP	CAUTION LABEL B	1	

10.5. WIRING MATERIALS



Ref. No.	Part No.	Part Name & Description	Pcs/Set	Remarks
W1	F030A9V30ZP	LEAD WIRE HARNESS	1	

10.6. PACKING AND ACCESSORIES



Ref. No.	Part No.	Part Name & Description	Pcs/Set	Remarks
P1	F00039V30QP	INSTRUCTION MANUAL	1	
P2	F01029V30HQP	PACKING CASE, PAPER	1	
P3	F01049V00XP	UPPER FILLER	1	
P4	F01059V00XP	LOWER FILLER	1	
P5	F01068100XN	P. E. BAG	1	
P6	F01075G10XN	DOOR SHEET	1	
P7	F06019W00XP	COOKING TRAY	1	
P8	F01924T00AP	SHEET	1	
P10	F00065G40AP	CAUTION LABEL	1	