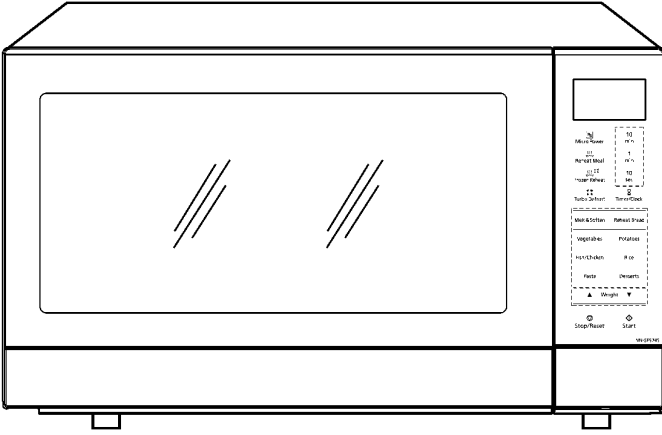


Service Manual

Microwave Oven

NN-SF574S
NN-SF564W

QPQ(Australia & New Zealand)

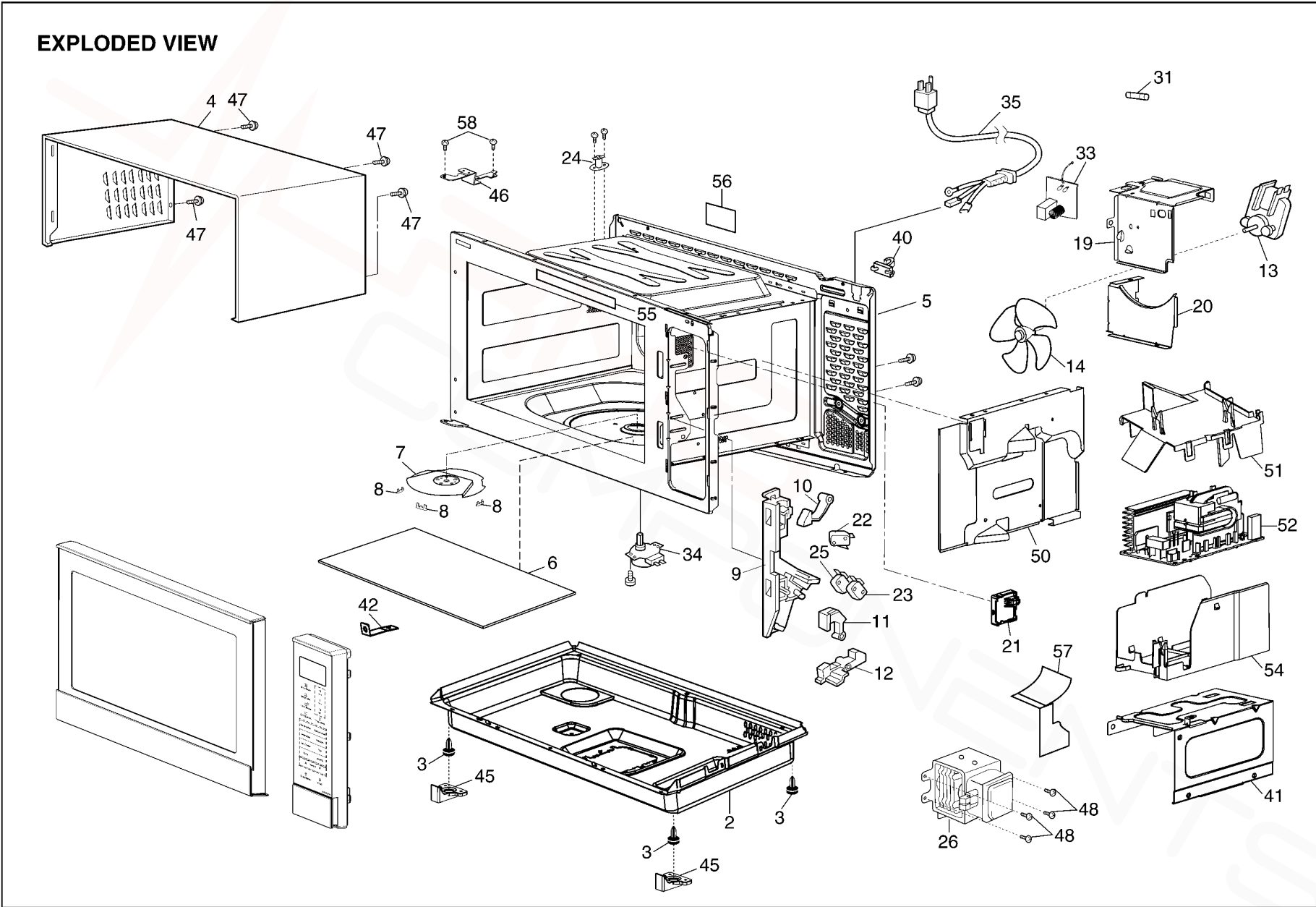


Specifications:

Model:	NN-SF574S	NN-SF564W
Specifications:		
Power Source:	230~240V AC Single Phase, 50Hz	
Power Consumption:	850W	850W
Output:	1000W	1000W
Microwave Frequency:	2450MHz	
Timer:	30 Min. / Stage (HIGH Power Level) ~ 3 Stage Maximum 99 Min. 59 Sec. / Stage (Other Power Level) ~ 3 Stage Maximum	
Outside Dimensions:	529mm(W) x 326mm(H) x 422mm(D)	
Oven Cavity Dimensions:	354mm(W) x 230mm(H) x 338mm(D)	
Net Weight:	11.8 kg	11.7 kg
PbF	This product with PbF	
Specifications subject to change without notice.		

10 EXPLODED VIEW AND PARTS LIST

10.1. EXPLODED VIEW



10.2. PARTS LIST

NOTE:

1. When ordering replacement part(s), please use part number(s) shown in this part list.

Do not use description of the part.

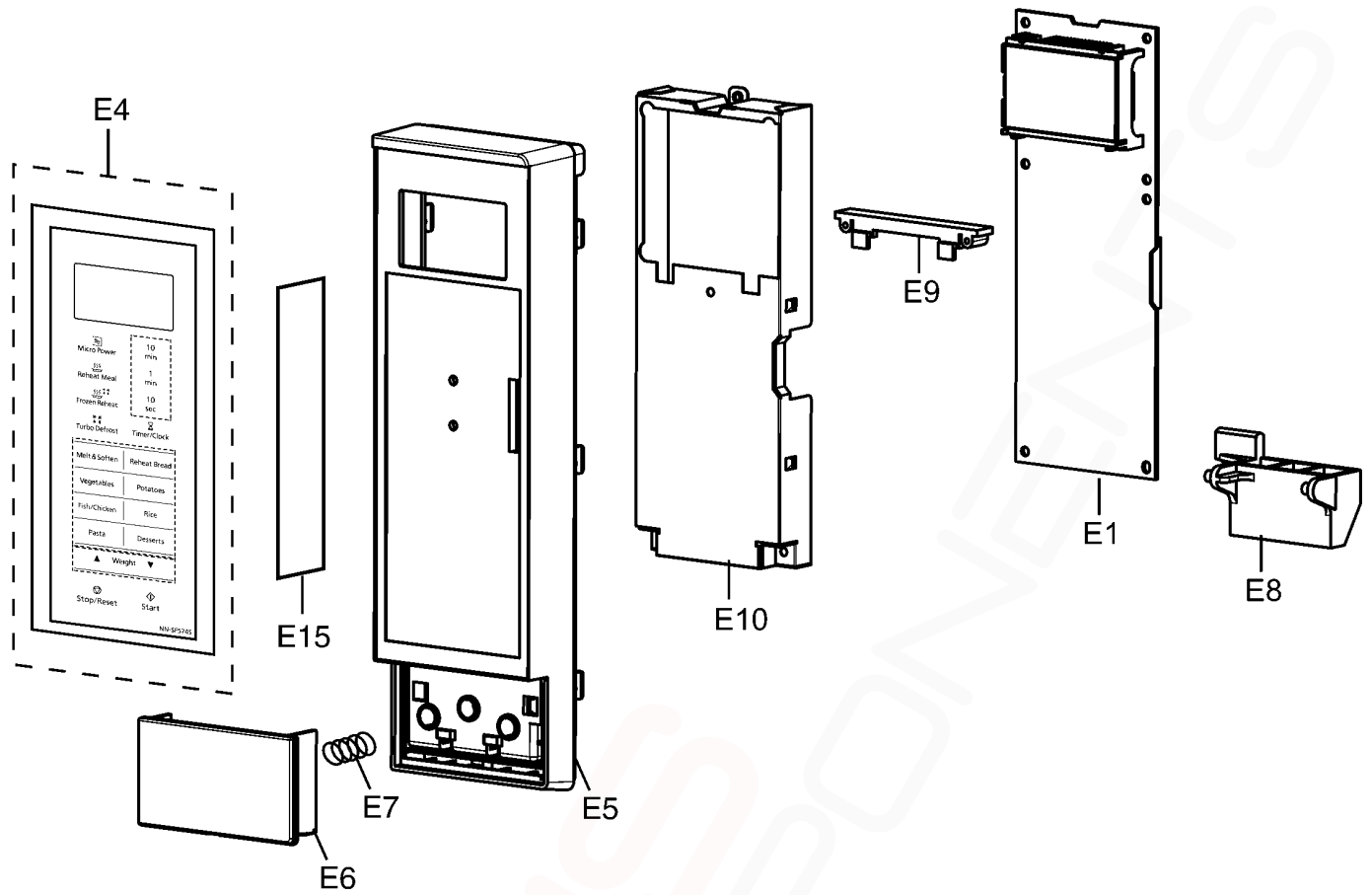
2. Important safety notice:

Components identified by \triangle mark have special characteristics important for safety.

When replacing any of these components, use only manufacture's specified parts.

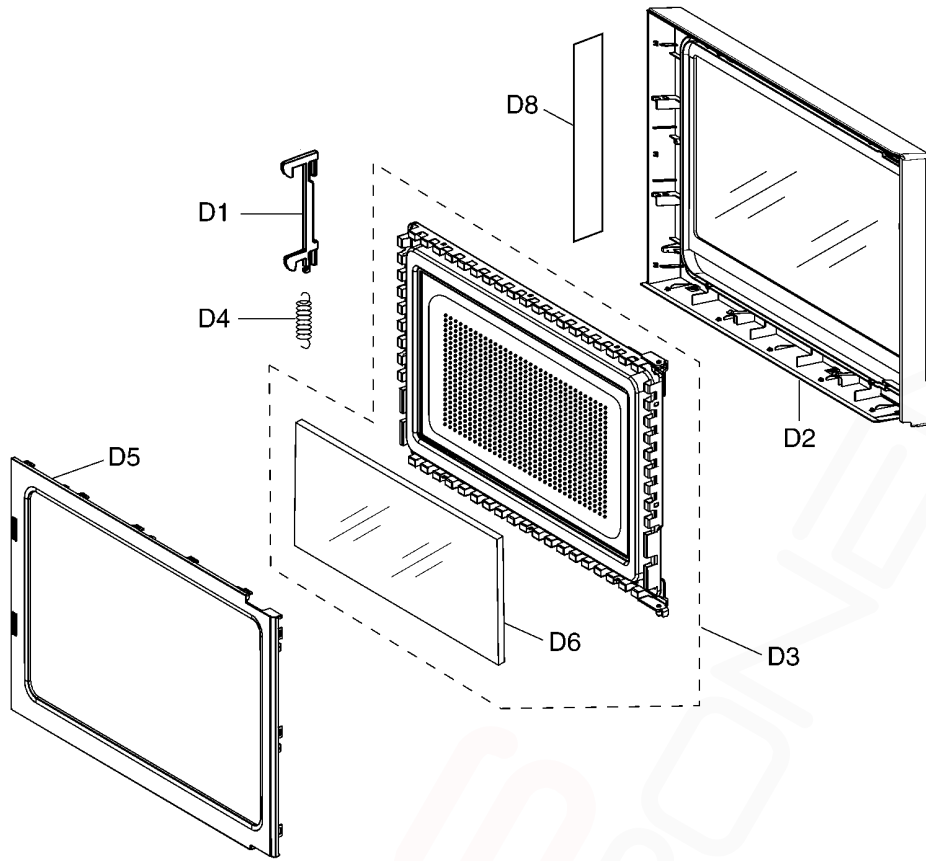
Ref. No.		Part No.	Part Name & Description	Pcs/Set	Remarks
2		F10019L10XPG	BASE	1	
3		F1008BN00HPS	RUBBER FOOT	4	
4		F1009BN00HMP	CABINET BODY	1	SF574S
4		F1009BN60SQP	CABINET BODY	1	SF564W
5	\triangle	F200ABN50QP	OVEN	1	
6		F010TBN00HP	FLAT TABLE (U)	1	
7		F202KBN00HP	ANTENNA STIRRER (U)	1	
8		F20197J70XP	ANTENNA BRACKET	3	
9	\triangle	F30206G30AP	DOOR HOOK	1	
10		F31366G30AP	HOOK LEVER A	1	
11		F3137BN00HP	HOOK LEVER B	1	
12		F31386G30AP	HOOK LEVER C	1	
13		F400A9L00XP	FAN MOTOR	1	
14		F4008-1L70	FAN BLADE	1	
19		F41449L40ZP	UPPER ORIFICE	1	
20		F4146-1P00	LOWER ORIFICE	1	
21		F612EBN50QP	LAMP (U)	1	LED LAMP INSIDE
22	\triangle	F61425U30XN	MICRO SWITCH	1	(PRIMARY INTERLOCK SWITCH)
23	\triangle	F61415U30XN	MICRO SWITCH	1	(SECONDARY INTERLOCK SWITCH)
24	\triangle	F61459L00XP	THERMAL CUTOUT	1	
25	\triangle	F61785U30XN	MICRO SWITCH	1	(SHORT SWITCH)
26	\triangle	2M261-M32J1Y	MAGNETRON	1	
31	\triangle	F62306V60BP	FUSE	1	10A, 250V
33		F607X9J50ZP	NOISE FILTER (U)	1	
34		F61449L00XP	STIRRER MOTOR	1	
35	\triangle	F900C9Q00QP	AC CORD W/PLUG	1	
40		F11409W00XP	STOPPER	1	
41		F1161-1P00	INVERTER REINFORCEMENT BRACKET A	1	
42		F11651P00V	INVERTER REINFORCEMENT BRACKETB	1	
45		F10529L10XP	STOPPER	2	
46		F3006BN00HP	HINGE A	1	
47		XTWBF4+8D	SCREW	4	FOR CABINET BODY
48		XTT4+8RDN	SCREW	4	FOR MAGNETRON
50		F22369Q30AP	RIGHT HEATER PANEL	1	
51		F40279L00XP	INVERTER AIR GUIDE	1	
52		F606YBH20GP	H.V. INVERTER (U)	1	
54		F65859L00XP	INVERTER BRACKET	1	
55		F0334BN60QP	MENU LABEL	1	
56		F00066V00HP	CAUTION LABEL	1	
57		F40429L20CP	AIR GUIDE F	1	
58		XTWFA4+12LR	SCREW	2	FOR HINGE A

10.3. ESCUTCHEON BASE ASSEMBLY



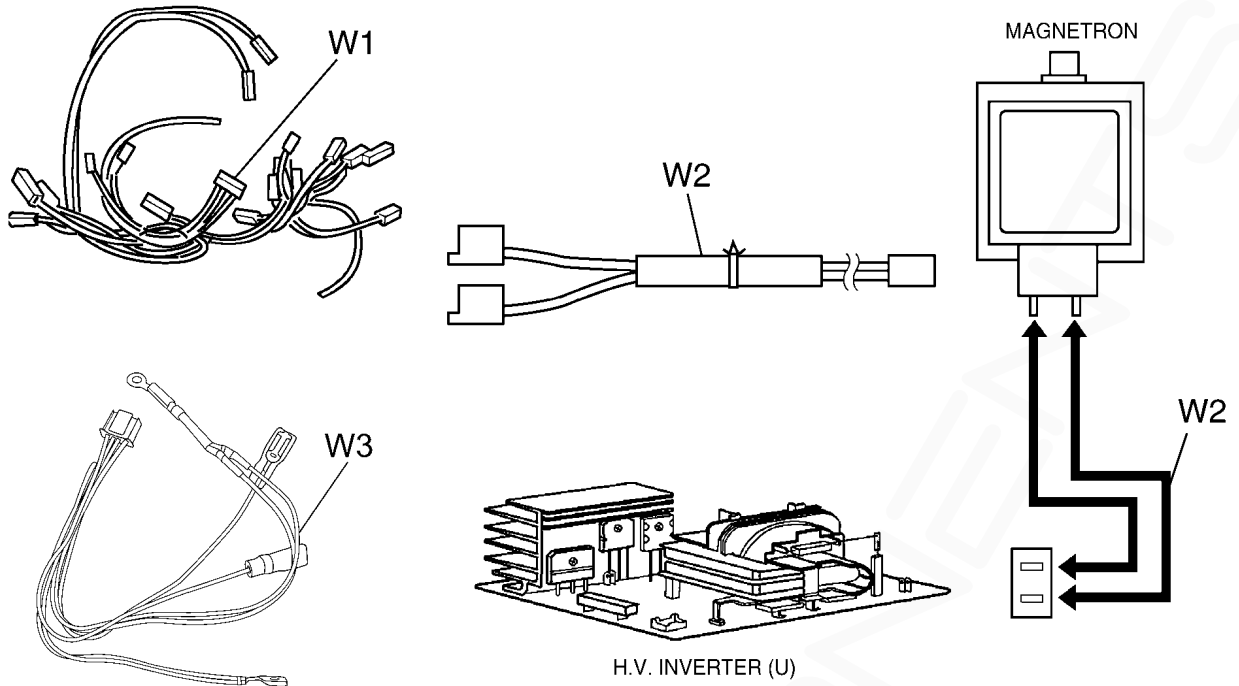
Ref. No.	Part No.	Part Name & Description	Pcs/Set	Remarks
E1	F603LBN50QP	D.P.CIRCUIT (AU)	1	
E4	F630YBN60BQP	MEMBRANE SWITCH (U)	1	SF574S
E4	F630YBN50BQP	MEMBRANE SWITCH (U)	1	SF564W
E5	F8034BN60SQP	ESCUTCHEON BASE	1	SF574S
E5	F8034BN00HHP	ESCUTCHEON BASE	1	SF564W
E6	F891PBN60SQP	DOOR OPENING BUTTON (U)	1	SF574S
E6	F8072BN00HHP	DOOR OPENING BUTTON	1	SF564W
E7	F80375K00AP	COOK BUTTON SPRING	1	
E8	F82569M60BP	DOOR OPENING LEVER	1	
E9	F66139L60XP	D.P.C. BOARD SUPPORT	1	
E10	F8127BN00HP	GROUNDING PLATE	1	
E15	F0007BN60SQP	NAME PLATE	1	SF574S
E15	F0007BN50HQP	NAME PLATE	1	SF564W

10.4. DOOR ASSEMBLY



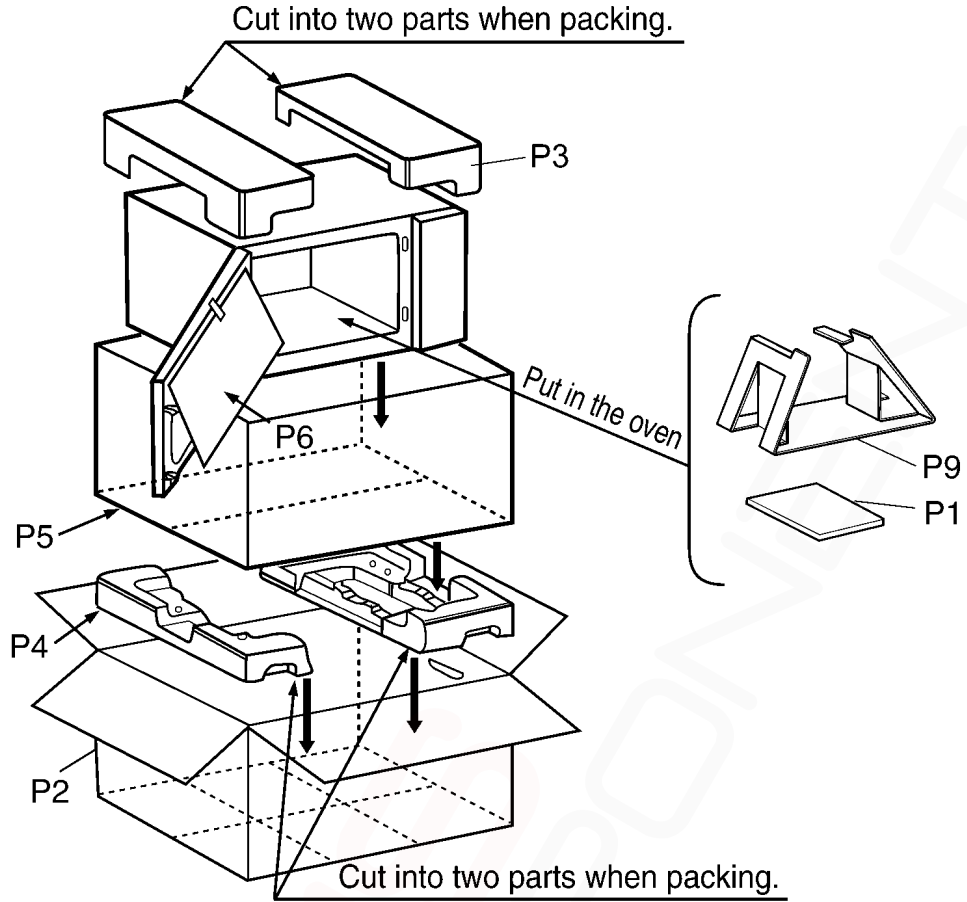
Ref. No.		Part No.	Part Name & Description	Pcs/Set	Remarks
D1		F30186P40AG	DOOR KEY A	1	
D2	⚠	F302ABN60SQP	DOOR A (U)	1	SF574S
D2	⚠	F302ABN50HQP	DOOR A (U)	1	SF564W
D3	⚠	F302K9Q30AP	DOOR E (U)	1	
D4		F30216P40AG	DOOR KEY SPRING	1	
D5	⚠	F30859Q30AP	DOOR C	1	
D6	⚠	F31459L70XP	DOOR SCREEN A	1	
D8		F0172BN50QP	CAUTION LABEL B	1	

10.5. WIRING MATERIALS



Ref. No.	Part No.	Part Name & Description	Pcs/Set	Remarks
W1	F030ABN50QP	LEAD WIRE HARNESS	1	
W2	F030E-1R90	H.V.LEAD WIRE	1	
W3	F0353BN50QP	THERMISTOR HARNESS	1	

10.6. PACKING AND ACCESSORIES



Ref. No.	Part No.	Part Name & Description	Pcs/Set	Remarks
P1	F0003BN60QP	INSTRUCTION MANUAL	1	
P2	F0102BN60SQP	PACKING CASE, PAPER	1	SF574S
P2	F0102BN50HQP	PACKING CASE, PAPER	1	SF564W
P3	F01049Q30AP	UPPER FILLER	1	
P4	F01059Q30AP	LOWER FILLER	1	
P5	F01064W00AP	P.E. BAG	1	
P6	F01078100XN	DOOR SHEET	1	
P9	F01089L00XP	RACK PACKING	1	