

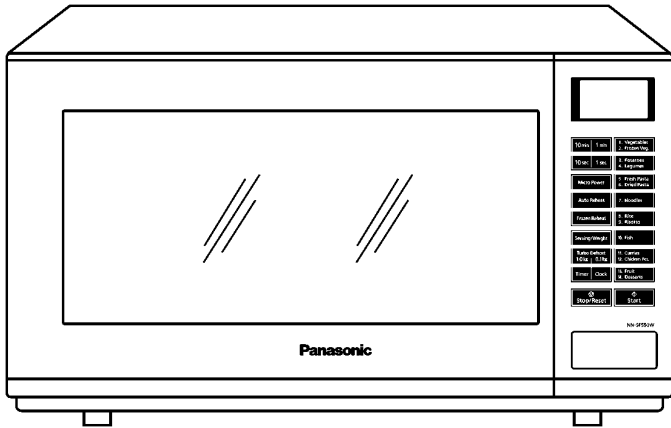
Service Manual

Microwave Oven

NN-SF550W

QPQ(Australia & New Zealand)

ZPE(CIS Countries)

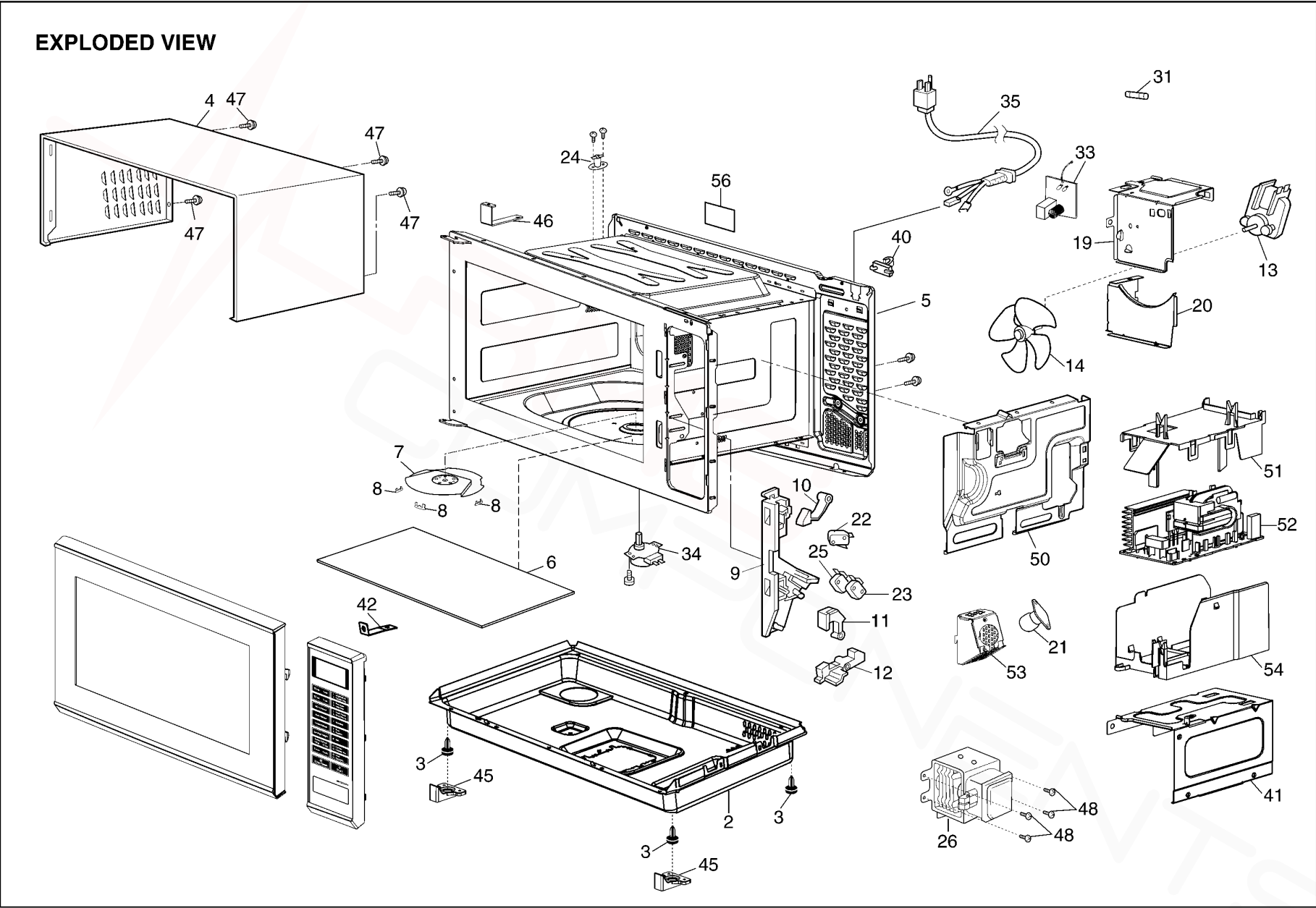


Specifications:

Model:	NN-SF550W
Specifications:	
Power Source:	230V AC Single Phase, 50HzFor QPQ Models 220V AC Single Phase, 50HzFor ZPE Models
Power Consumption:	900W
Output:	1000W
Microwave Frequency:	2450MHz
Timer:	30 Min. / Stage (HIGH Power Level) ~ 3 Stage Maximum 99 Min. 59 Sec. / Stage (Other Power Level) ~ 3 Stage Maximum
Outside Dimensions:	529mm(W) x 326mm(H) x 430mm(D)
Oven Cavity Dimensions:	354mm(W) x 200mm(H) x 338mm(D)
Net Weight:	12.0 kg
PbF	This product with PbF
Specifications subject to change without notice.	

10 EXPLODED VIEW AND PARTS LIST

10.1. EXPLODED VIEW



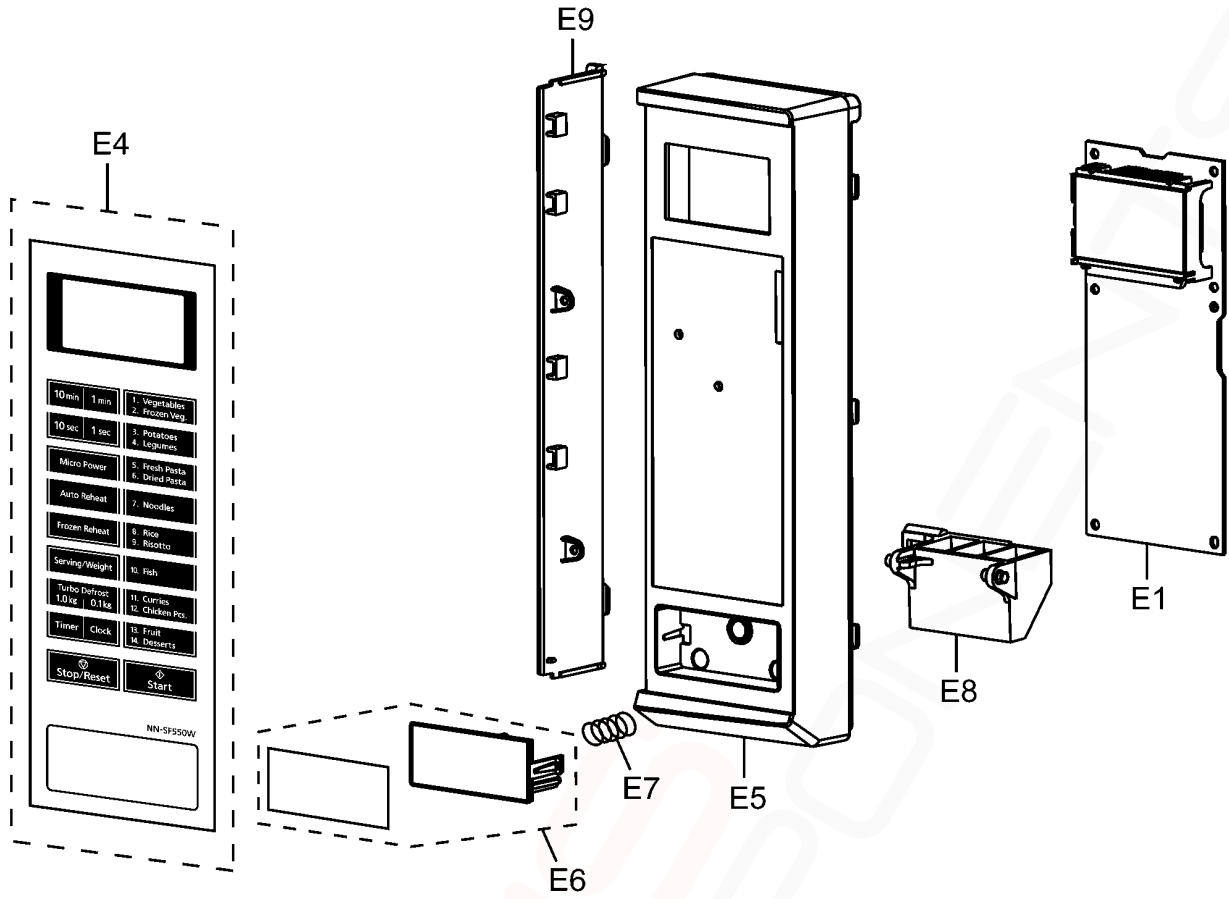
10.2. PARTS LIST

NOTE:

1. When ordering replacement part(s), please use part number(s) shown in this part list.
Do not use description of the part.
2. Important safety notice:
Components identified by \triangle mark have special characteristics important for safety.
When replacing any of these components, use only manufacture's specified parts.

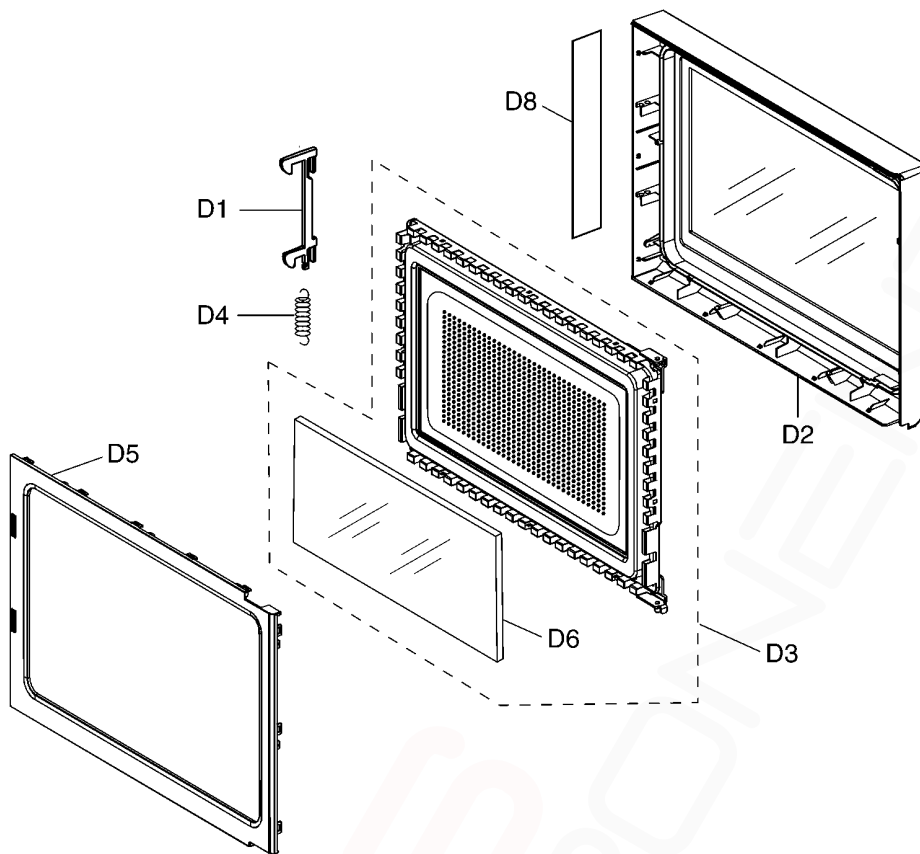
Ref. No.		Part No.	Part Name & Description	Pcs/Set	Remarks
2		F10019L10XPG	BASE	1	
3		F1008-1L40BS	RUBBER FOOT	4	
4		F110D9L00HXP	CABINET BODY	1	
5	\triangle	F200A9Q30RP	OVEN	1	
6		F010T9L40HP	FLAT TABLE (U)	1	
7		F202K7R00BP	ANTENNA STIRRER (U)	1	
8		F20199Q30AP	ANTENNA BRACKET	3	
9	\triangle	F30206G30AP	DOOR HOOK	1	
10		F31366G30AP	HOOK LEVER A	1	
11		F31376G30AP	HOOK LEVER B	1	
12		F31386G30AP	HOOK LEVER C	1	
13		F400A9L00XP	FAN MOTOR	1	
14		F4008-1L70	FAN BLADE	1	
19		F41449L40ZP	UPPER ORIFICE	1	
20		F4146-1P00	LOWER ORIFICE	1	
21		F612E9L60XP	INCANDESCENT LAMP (U)	1	
22	\triangle	J61415G10XN	MICRO SWITCH	1	(PRIMARY LATCH SWITCH)
23	\triangle	F61415U30XN	MICRO SWITCH	1	(SECONDARY LATCH SWITCH)
24	\triangle	F61459L00XP	THERMAL CUTOUT	1	
25	\triangle	F61785U30XN	MICRO SWITCH	1	(SHORT SWITCH)
26	\triangle	2M236-M42J7P	MAGNETRON	1	
31	\triangle	F62306V60BP	FUSE	1	10A, 250V
33		F607X9J50ZP	NOISE FILTER (U)	1	
34		F61449L00XP	STIRRER MOTOR	1	
35	\triangle	F900C9Q00QP	AC CORD W/PLUG	1	QPQ
35	\triangle	F900C9L30ZP	AC CORD W/PLUG	1	ZPE
40		F11404J60XN	STOPPER	1	
41		F1161-1P00	INVERTER REINFORCEMENT BRACKET A	1	
42		F1165-1P00	INVERTER REINFORCEMENT BRACKET B	1	
45		F10529L10XP	STOPPER	2	
46		F20999L70XP	REINFORCEMENT BRACKET D	1	
47		XTWBFE4+8D	SCREW	4	FOR CABINET BODY
48		XTT4+8RDN	SCREW	4	FOR MAGNETRON
50		F22369Q30AP	RIGHT HEATER PANEL	1	
51		F40279L00XP	INVERTER AIR GUIDE	1	
52		F606YM300BP	H.V. INVERTER (U)	1	
53		F60749L00XP	INCANDESCENT LAMP BRACKET	1	
54		F65859L00XP	INVERTER BRACKET	1	
56		F00066V00HP	CAUTION LABEL	1	QPQ
56		F00066W10ZP	CAUTION LABEL	1	ZPE

10.3. ESCUTCHEON BASE ASSEMBLY



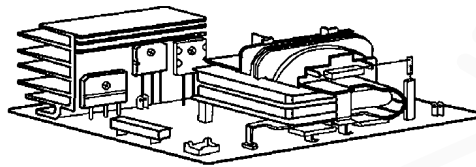
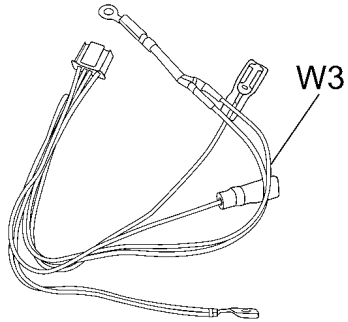
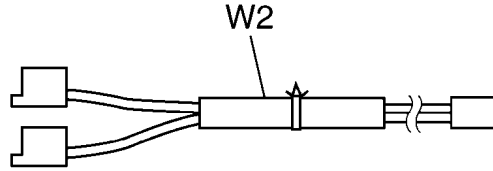
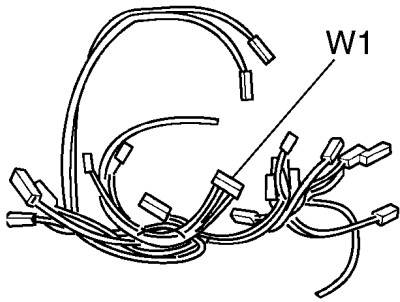
Ref. No.	Part No.	Part Name & Description	Pcs/Set	Remarks
E1	F603L9Q00QP	D.P.CIRCUIT (AU)	1	QPQ
E1	F603L9Q10ZP	D.P.CIRCUIT (AU)	1	ZPE
E4	F630Y9Q00BQP	MEMBRANE SWITCH (U)	1	QPQ
E4	F630Y9Q00BZP	MEMBRANE SWITCH (U)	1	ZPE
E5	F80349Q30HAP	ESCUTCHEON BASE	1	
E6	F891P9L10BXP	DOOR OPENING BUTTON (U)	1	
E7	F80375K00AP	COOK BUTTON SPRING	1	
E8	F82569M60BP	DOOR OPENING LEVER	1	
E9	F80579M60BP	ESCUTCHEON BASE B	1	
E15	F00079Q00HQP	NAME PLATE	1	QPQ
E15	F00079Q00HZP	NAME PLATE	1	ZPE

10.4. DOOR ASSEMBLY

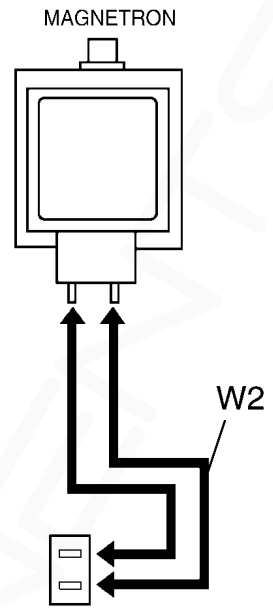


Ref. No.		Part No.	Part Name & Description	Pcs/Set	Remarks
D1		F30186P40AG	DOOR KEY A	1	
D2	⚠	F302A9Q30HAP	DOOR A (U)	1	
D3	⚠	F302K9Q30AP	DOOR E (U)	1	
D4		F30215G10XN	DOOR KEY SPRING	1	
D5	⚠	F30859Q30AP	DOOR C	1	
D6	⚠	F31459L70XP	DOOR SCREEN A	1	
D8		F01726V00JP	CAUTION LABEL B	1	QPQ

10.5. WIRING MATERIALS

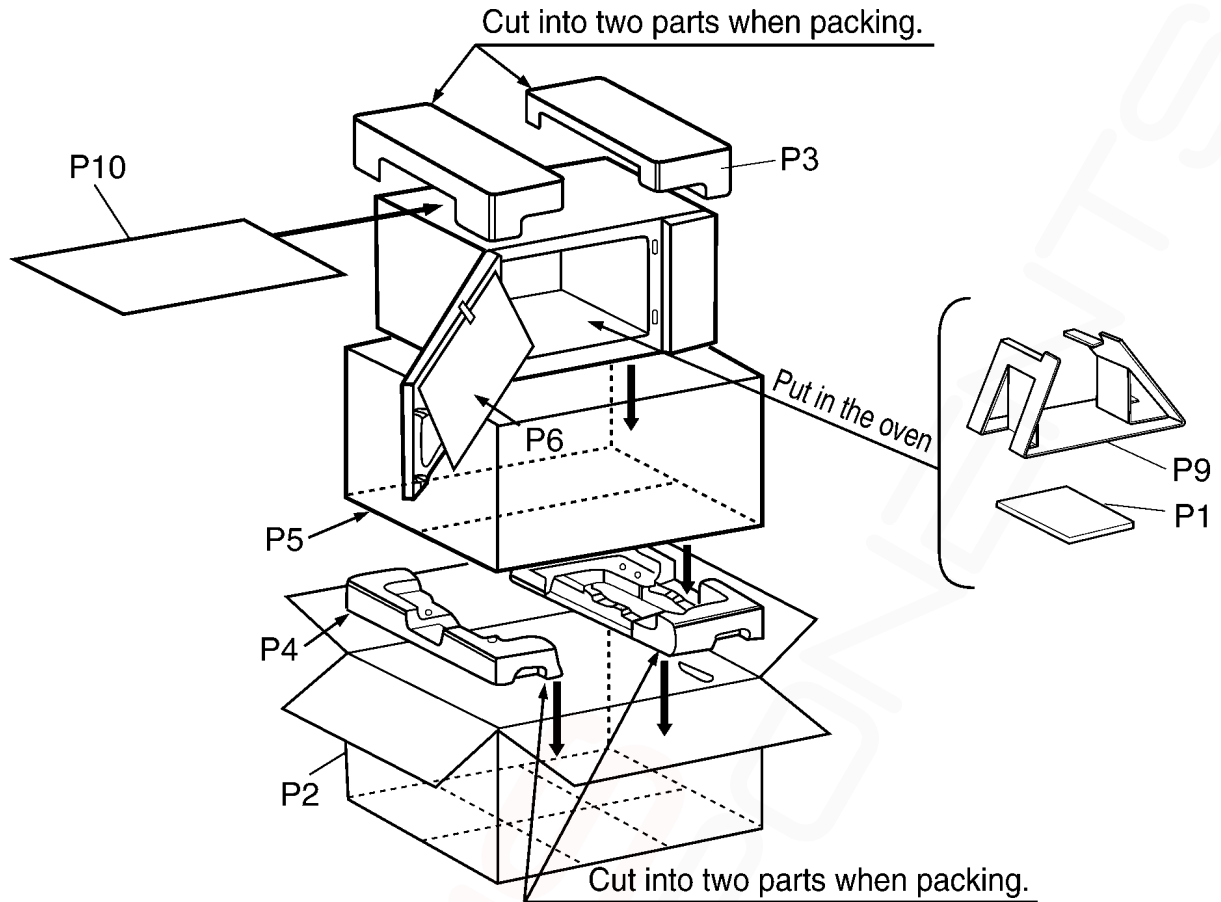


H.V. INVERTER (U)



Ref. No.	Part No.	Part Name & Description	Pcs/Set	Remarks
W1	F030A9Q10ZP	LEAD WIRE HARNESS	1	
W2	F030E-1P00	H.V.LEAD WIRE	1	QPQ
W2	F030E9L30ZP	H.V.LEAD WIRE	1	ZPE
W3	F03539L00XP	THERMISTOR HARNESS	1	

10.6. PACKING AND ACCESSORIES



Ref. No.	Part No.	Part Name & Description	Pcs/Set	Remarks
P1	F00039Q00QP	INSTRUCTION MANUAL	1	QPQ
P1	F00039Q00ZP	INSTRUCTION MANUAL	1	ZPE
P2	F01029Q00HQP	PACKING CASE, PAPER	1	QPQ
P2	F01029Q00HZP	PACKING CASE, PAPER	1	ZPE
P3	F01049Q30AP	UPPER FILLER	1	
P4	F01059Q30AP	LOWER FILLER	1	
P5	F01064W00AP	P.E. BAG	1	
P6	F01078100XN	DOOR SHEET	1	
P9	F01089L00XP	RACK PACKING	1	
P10	F01924T00AP	SHEET	1	