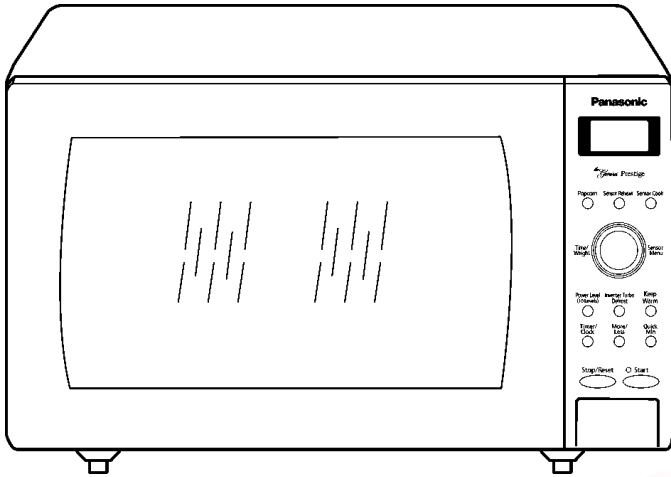


Service Manual

Microwave Oven

NN-SE792S

QPQ (Australia & New Zealand)

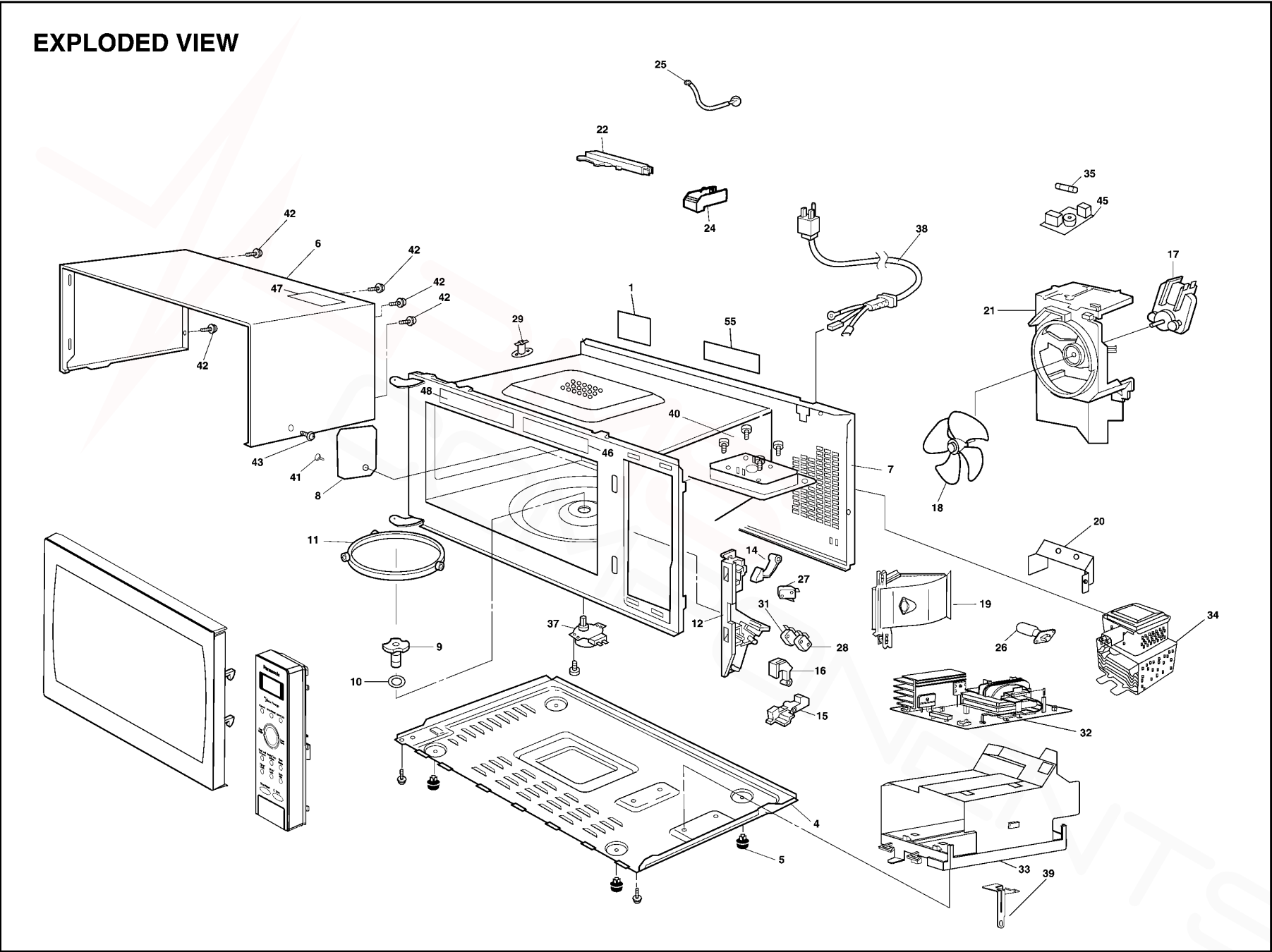


Specifications:

Specifications:	Models:	NN-SE792S
Power Source:		230V-240V AC Single Phase, 50Hz
Power Consumption:		1150W
Output:		1100W
Microwave Frequency:		2450MHz
Timer:		30 min. / Stage (P10 Power) ~ 3 Stage Maximum 99 min. 99 sec / Stage (Other Power Levels) ~ 3 Stage Maximum
Outside Dimensions:		555mm(W) X 304mm(H) X 493mm(D)
Oven Cavity Dimensions:		418mm(W) X 228mm(H) X 470mm(D)
Weight:		14.3 kg
PbF		This product with PbF
Specifications subject to change without notice.		

8 EXPLODED VIEW AND PARTS LIST

8.1. EXPLODED VIEW



8.2. PARTS LIST

NOTE:

1. When ordering replacement part(s), please use part number(s) shown in this part list.

Do not use description of the part.

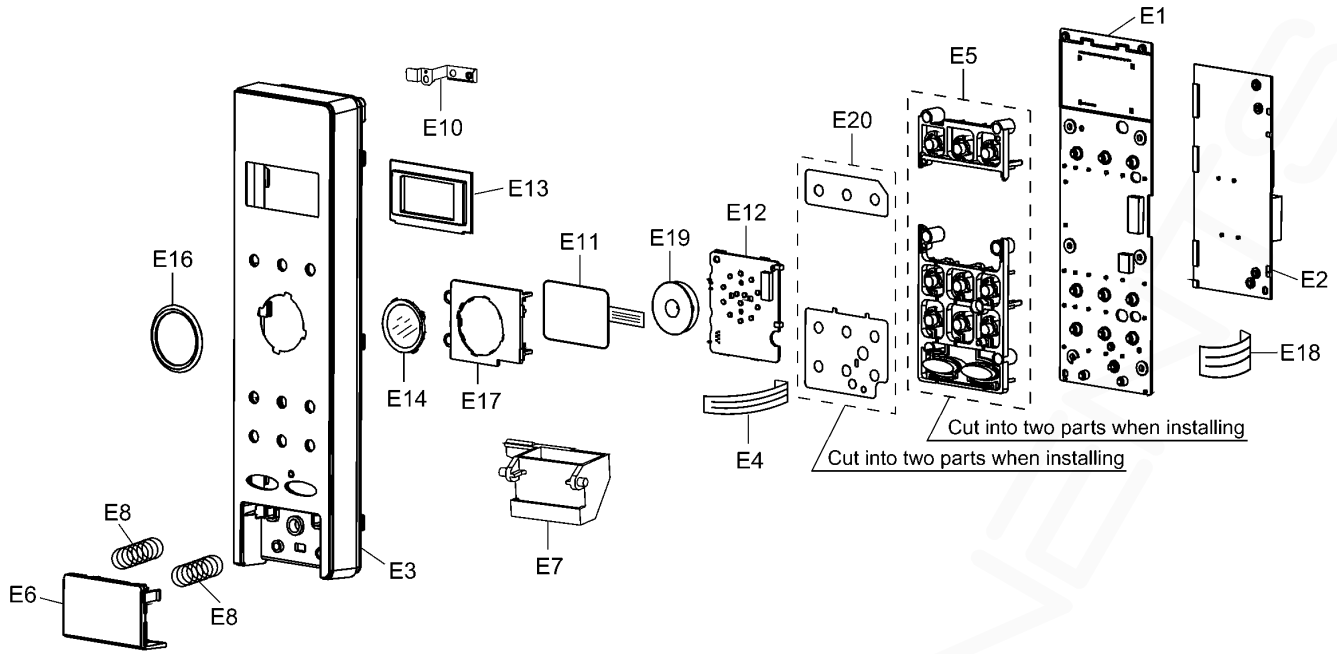
2. Important safety notice:

Components identified by mark have special characteristics important for safety.

When replacing any of these components, use only manufacture's specified parts.

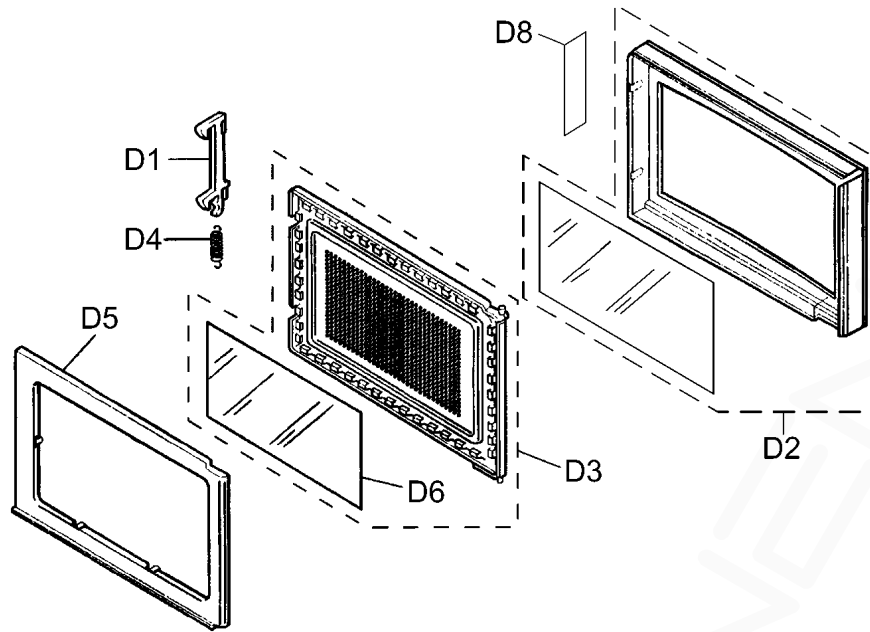
Ref. No.		Part No.	Part Name & Description	Pcs/Set	Remarks
1		F00066V00HP	CAUTION LABEL	1	
4		F10016H60APG	BASE	1	
5		F10084T00APS	RUBBER FOOT	4	
6		F10096H60SAP	CABINET BODY (U)	1	
7	△	F200A8E00AP	OVEN (U)	1	
8		F20555K00AP	COVER	1	
9		F21315Y00AP	PULLY SHAFT	1	
10		F2177-F80	WASHER	1	
11		F290D9330AP	ROLLER RING (U)	1	
12	△	F30206G30AP	DOOR HOOK	1	
14		F31366G30AP	HOOK LEVER A	1	
15		F31376G30AP	HOOK LEVER B	1	
16		F31386G30AP	HOOK LEVER C	1	
17		F400A6V00QP	FAN MOTOR	1	AC240V,SINGLE PHASE,50Hz
18		F40084T00AP	FAN BLADE	1	
19		F40254W00AP	AIR GUIDE A	1	
20		F40264T60APG	AIR GUIDE B	1	
21		F41445W00AP	ORIFICE	1	
22		F64508660AP	SENSOR COVER B	1	
24		F65434W00AP	SENSOR COVER C	1	
25		J607S4M00AP	STEAM SENSOR	1	
26		F612E4Y00XP	INCANDESCENT LAMP (U)	1	
27	△	F61425U30XN	MICRO SWITCH	1	(PRIMARY LATCH SWITCH)
28	△	F61415U30XN	MICRO SWITCH	1	(SECONDARY LATCH SWITCH)
29	△	F61455L00CP	THERMAL CUTOUT	1	105°C
31	△	F61785U30XN	MICRO SWITCH	1	(SHORT SWITCH)
32	△	F606YBA00QP	H.V.INVERTER (U)	1	
33		F65856K50AP	INVERTER BRACKET	1	
34	△	2M261-M32JP	MAGNETRON	1	
35	△	F62306V60BP	FUSE	1	10A/240V,50Hz
37		F63266S30XP	TURNTABLE MOTOR	1	
38	△	F900C9J20QP	AC CORD W/PLUG	1	
39		F66626H60AP	GROUNDING PLATE	1	
40		XTWFL4+12T	SCREW	4	FOR MAGNETRON
41		F90804W00AP	CANOE CLIP	1	FOR COVER
42		XTWFA4+12D	SCREW	5	FOR CABINET BODY
43		XTTFL4+6BN	SCREW	1	FOR CABINET BODY SIDE
45		F607X9J20QP	NOISE FILTER	1	
46		F0334BE20QP	MENU LABEL	1	
47		F02448N40AP	CAUTION LABEL	1	SE792S
48		F0446BE20QP	FUNCTION LABEL	1	
55		F0007BE20SQP	NAME PLATE	1	

8.3. ESCUTCHEON BASE ASSEMBLY



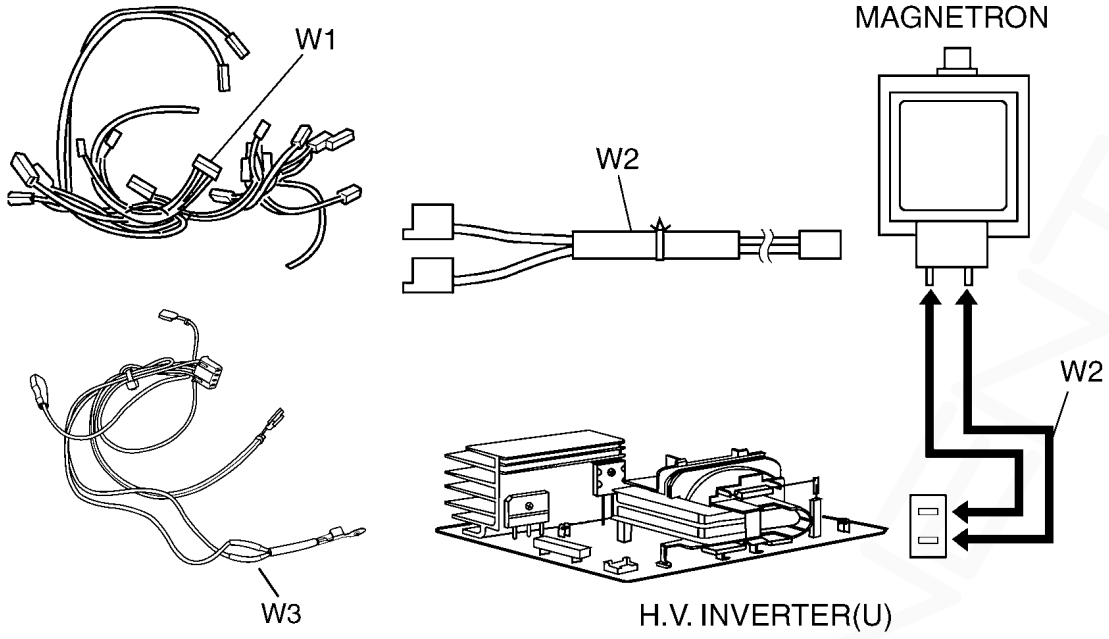
Ref. No.	Part No.	Part Name & Description	Pcs/Set	Remarks
E1	F603LBE20QP	D.P.CIRCUIT (AU)	1	
E2	F603YBE20QP	D.P.CIRCUIT (DU)	1	
E3	F800LBE20SQP	ESCUTCHEON BASE (U)	1	
E4	F6616BD60AP	FLAT CABLE	1	(NARROW)
E5	F8298BE20SAP	BUTTON	1	
E6	F891P6H60SAP	DOOR OPENING BUTTON (U)	1	
E7	F82565X00AP	DOOR OPENING LEVER	1	
E8	F80375K00AP	COOK BUTTON SPRING	2	
E10	F90098N00AP	GROUNDING PANEL	1	
E11	F6383BD60AP	KEY BOARD	1	
E12	F603MBD60AP	D.P.CIRCUIT (BU)	1	
E13	F80576G00AP	DISPLAY WINDOW	1	
E14	F8228BD60AP	ELECTROSTATIC DIAL	1	
E16	F8227BD60KAP	DECORATIVE RING	1	
E17	F8229BD60AP	BRACKET	1	
E18	F6616BD70AP	FLAT CABLE	1	(WIDE)
E19	F8127BD60AP	LIGHT GUIDE	1	
E20	F8338BE20AP	WATERPROOF SHEET	1	

8.4. DOOR ASSEMBLY



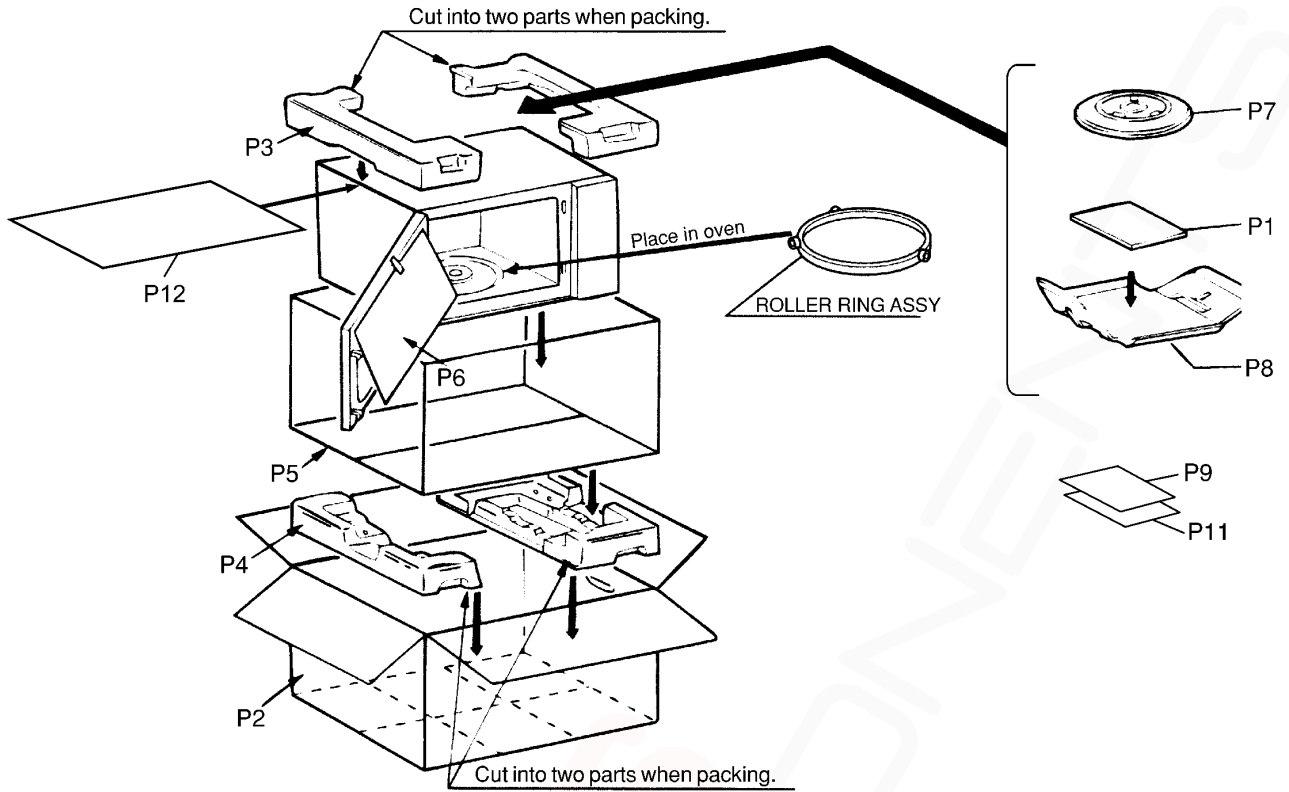
Ref. No.		Part No.	Part Name & Description	Pcs/Set	Remarks
D1		F30186P40AG	DOOR KEY A	1	
D2	⚠	F302A8N90SAP	DOOR A (U)	1	
D3	⚠	F302KBE20AP	DOOR E (U)	1	
D4		F30216P40AG	DOOR KEY SPRING	1	
D5	⚠	F30854W00AP	DOOR C	1	
D6	⚠	F31454W00AP	DOOR SCREEN A	1	
D8		F01726V00JP	CAUTION LABEL B	1	

8.5. WIRING MATERIALS



Ref. No.	Part No.	Part Name & Description	Pcs/Set	Remarks
W1	F030ABE20QP	LEAD WIRE HARNESS	1	
W2	F030E6G30AP	H.V.LEAD WIRE	1	
W3	F0352BE20QP	LEAD WIRE HARNESS (U)	1	

8.6. PACKING AND ACCESSORIES



Ref. No.	Part No.	Part Name & Description	Pcs/Set	Remarks
P1	F0003BE20QP	INSTRUCTION MANUAL	1	
P2	F0102BE20SQP	PACKING CASE,PAPER	1	
P3	F01044W00AP	UPPER FILLER	1	
P4	F01054W00AP	LOWER FILLER	1	
P5	F01064W00AP	P.E.BAG	1	
P6	F01074W00AP	DOOR SHEET	1	
P7	A06014A00AP	COOKING TRAY	1	
P8	F01084W00AP	TRAY PACKING	1	
P11	F00166V20QP	NOTICE	1	
P12	F0445BE20SQP	OVERLAY	1	