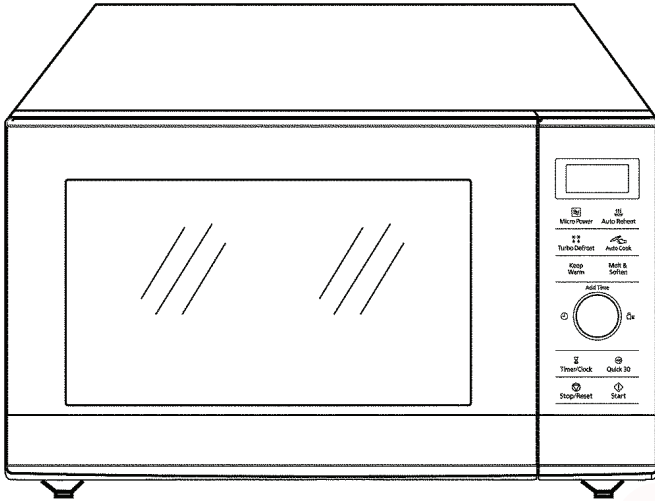


Service Manual

Microwave Oven

NN-SD38HS

QPQ (Australia & New Zealand)

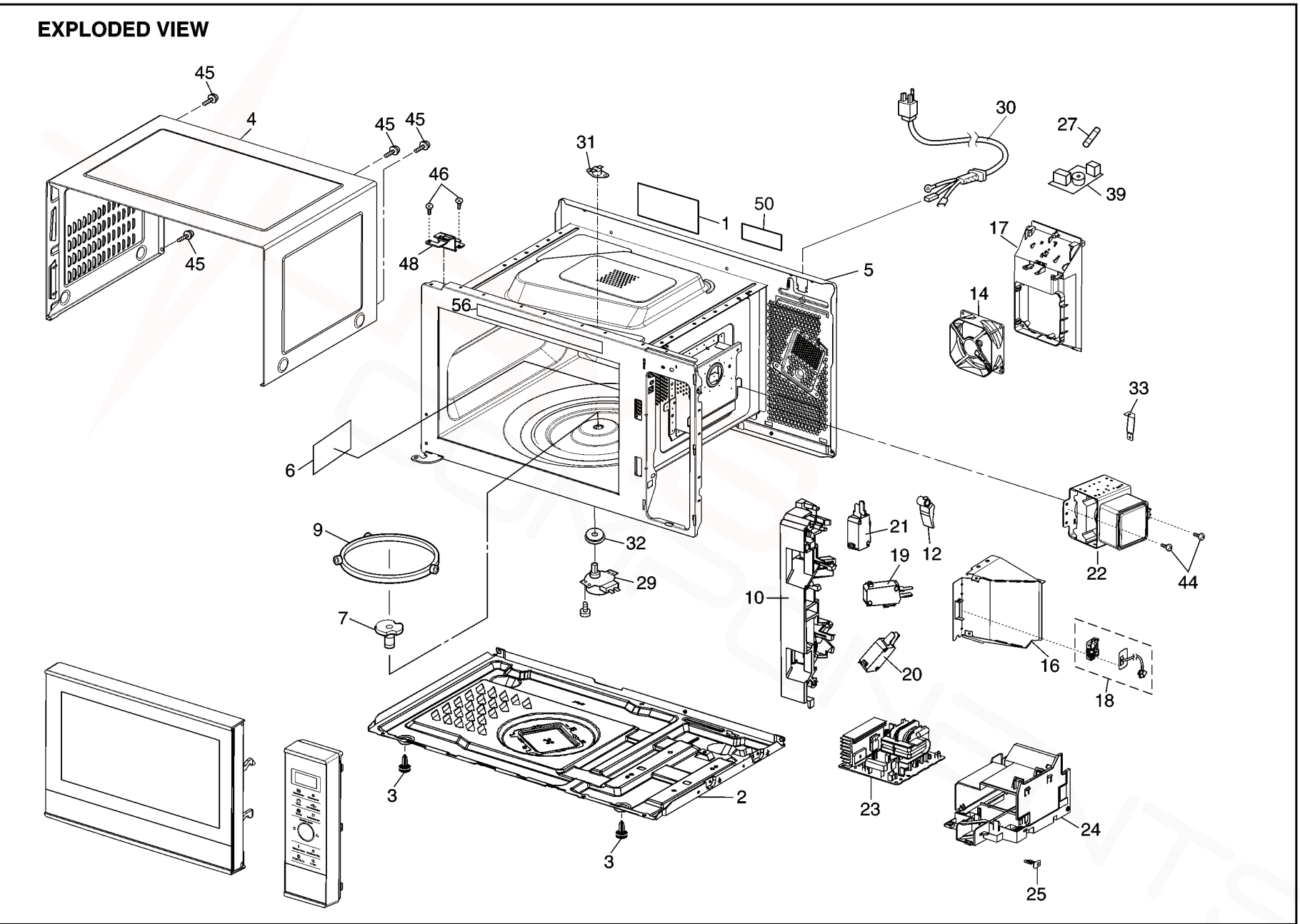


Specification

Models		NN-SD38HS
Power Source:		230~240V AC Single Phase, 50Hz
Power Consumption:	Microwave	1150W
Output:	Microwave	1000W
Microwave Frequency:		2450MHz
Timer:		90 min.00sec (HIGH/MAX Power Level) 30 min.00sec (Other Power Level)
Outside Dimensions:		488mm(W) x 395mm(D) x 279mm(H)
Oven Cavity Dimensions:		315mm(W) x 353mm(D) x 178mm(H)
Weight:		9.5kg
PbF		This product with PbF
Specifications subject to change without notice.		

8 EXPLODED VIEW AND PARTS LIST

8.1. EXPLODED VIEW



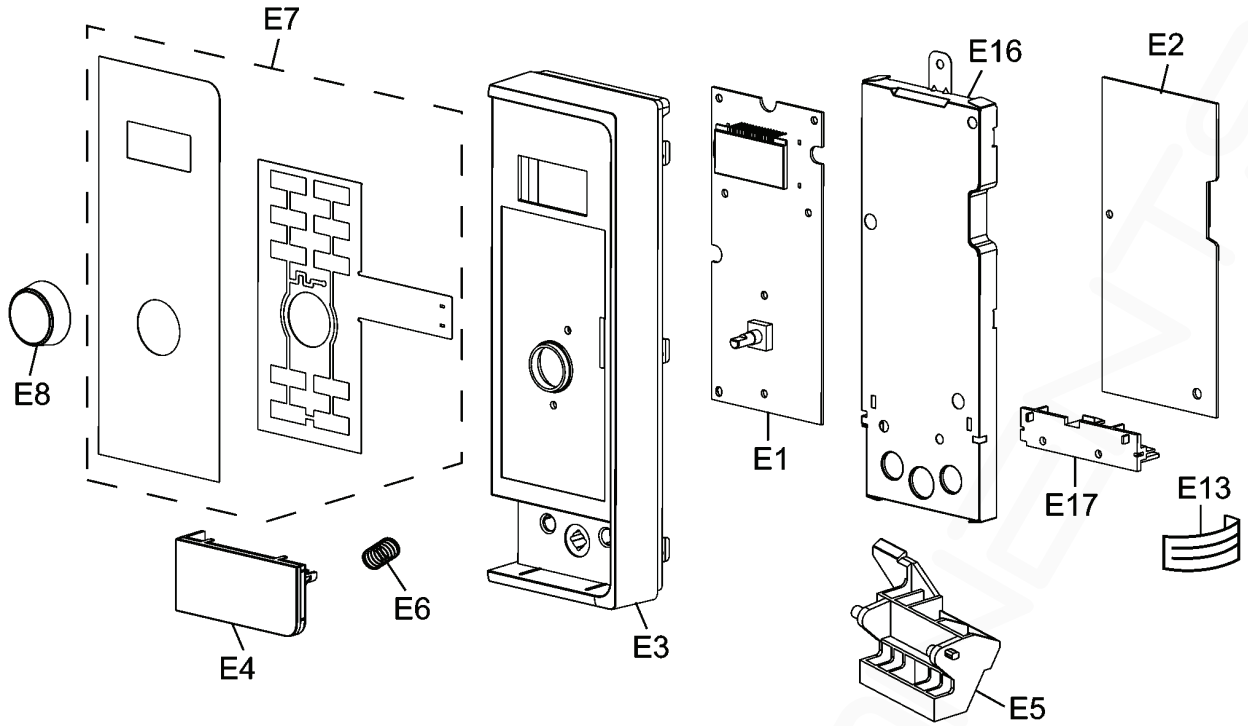
8.2. PARTS LIST

NOTE:

1. When ordering replacement part(s), please use part number(s) shown in this part list.
Do not use description of the part.
2. Important safety notice:
Components identified by \triangle mark have special characteristics important for safety.
When replacing any of these components, use only manufacture's specified parts.

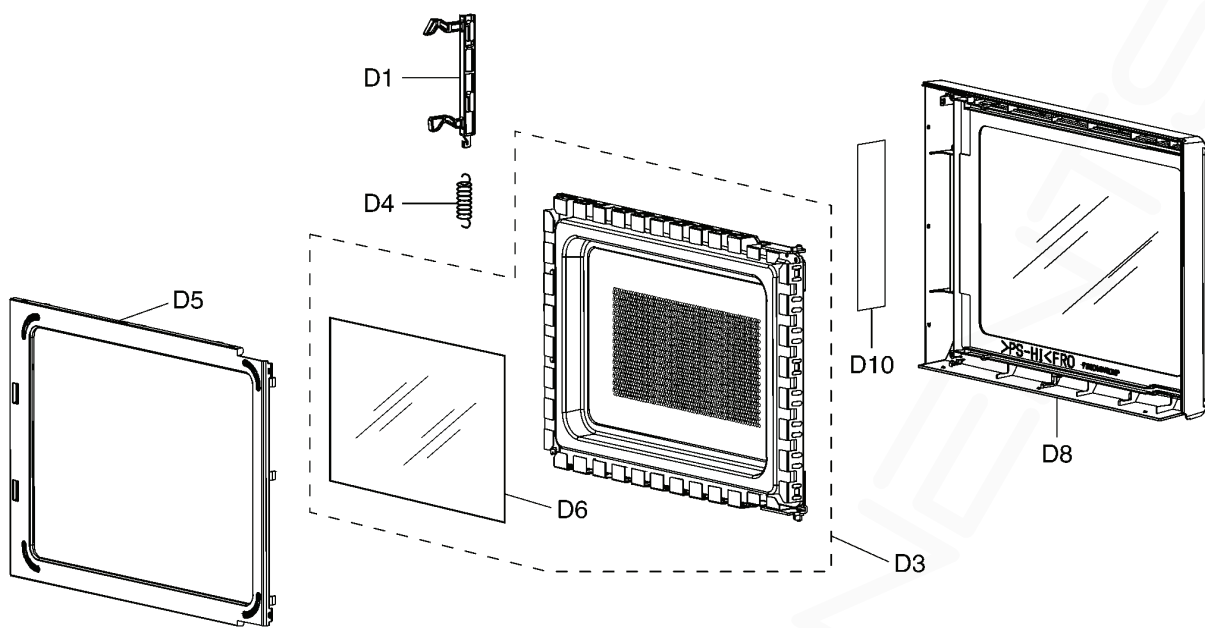
Ref. No.		Part No.	Part Name & Description	Pcs/Set	Remarks
1		F00066V00HP	CAUTION LABEL	1	
2		F10019V00XP	BASE	1	
3		F10089W40HPS	RUBBER FOOT	2	
4		F1009BB10BBP	CABINET BODY	1	
5	\triangle	F200ABA00EP	OVEN	1	
6		F20559V00XP	COVER	1	
7		F21316E70XP	PULLY SHAFT	1	
9		F290D9W00XP	ROLLER RING (U)	1	
10	\triangle	F30209V10XP	DOOR HOOK	1	
12		F31369V00XP	HOOK LEVER A	1	
14		F4001BW30BP	DC FAN MOTOR (U)	1	DC12V
16		F4025BA00EP	AIR GUIDE A	1	
17		F4144BW30EP	ORIFICE	1	
18		F612EBW30BP	D.P.CIRCUIT (HU)	1	LED LAMP INSIDE
19	\triangle	F61425U30XN	MICRO SWITCH	1	(PRIMARY LATCH SWITCH)
20	\triangle	F61415U30XN	MICRO SWITCH	1	(SECONDARY LATCH SWITCH)
21	\triangle	F61785U30XN	MICRO SWITCH	1	(SHORT SWITCH)
22	\triangle	2M236-M36U35	MAGNETRON	1	
23	\triangle	F606YBA00QP	H.V.INVERTER (U)	1	
24		F6585BW30EP	INVERTER BRACKET	1	
25		F66629W40HP	GROUNDING PLATE	1	
27	\triangle	F62306V60BP	FUSE	1	10A
29		F63269P00HP	TURNTABLE MOTOR	1	
30	\triangle	F900C9V30QP	AC CORD W/PLUG	1	
31	\triangle	F61459V00XP	THERMAL CUTOOUT	1	150°C OPEN, -20°C CLOSE
32		F21766S10XP	SEAL	1	
33		F2034BA00EP	FRONT PLATE BRACKET	1	
39	\triangle	F607XBW40BP	NOISE FILTER (U)	1	
44		XTWFL4+12T	SCREW	2	FOR MAGNETRON
45		XTWBFE4+8D	SCREW	4	FOR CABINET BODY
46		XTWFA4+12LR	SCREW	2	FOR HINGE A
48		F30069V00XP	HINGE A	1	
50		F0157BW40SQP	NAME PLATE	1	
56		F0334BA30QP	MENU LABEL	1	

8.3. ESCUTCHEON BASE ASSEMBLY



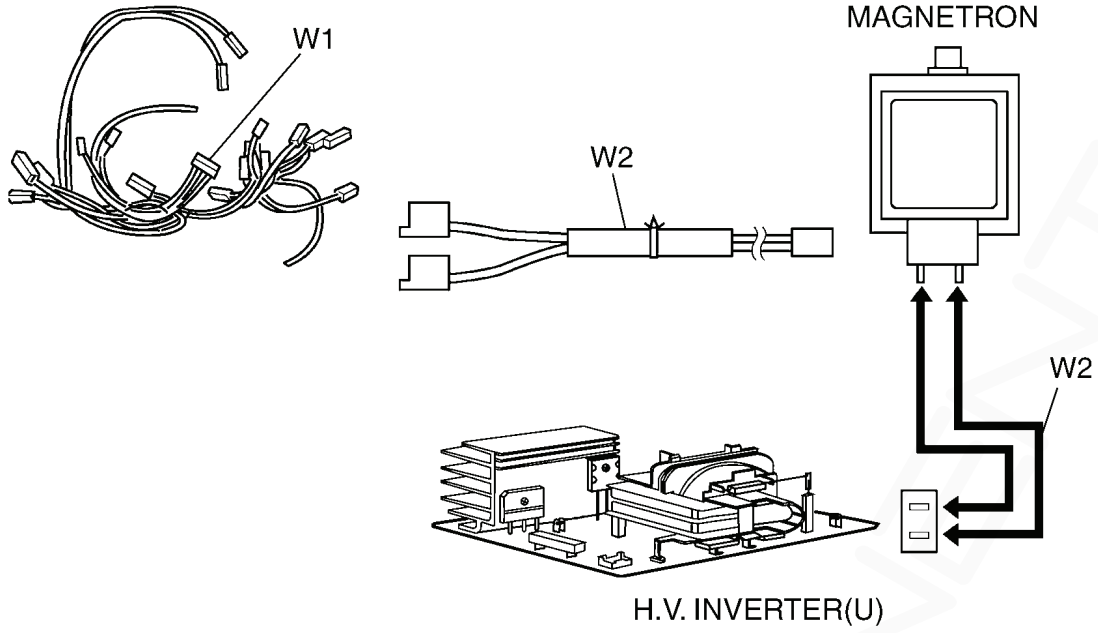
Ref. No.	Part No.	Part Name & Description	Pcs/Set	Remarks
E1	F603LBW40QP	D.P.CIRCUIT (AU)	1	
E2	F603YBW40BP	D.P.CIRCUIT (DU)	1	
E3	F8034BW30BEP	ESCUTCHEON BASE	1	
E4	F891PBW80SEP	DOOR OPENING BUTTON (U)	1	
E5	F8256BA00EP	DOOR OPENING LEVER	1	
E6	F80375K00AP	COOK BUTTON SPRING	1	
E7	F630YBW40BQP	MEMBRANE SWITCH (U)	1	
E8	F803GBS30BEP	DIAL (U)	1	
E13	F66167D00AP	FLAT CABLE	1	
E16	F8127BW30BP	BACK PANEL	1	
E17	F8257BA10BP	LEVER BRACKET	1	

8.4. DOOR ASSEMBLY



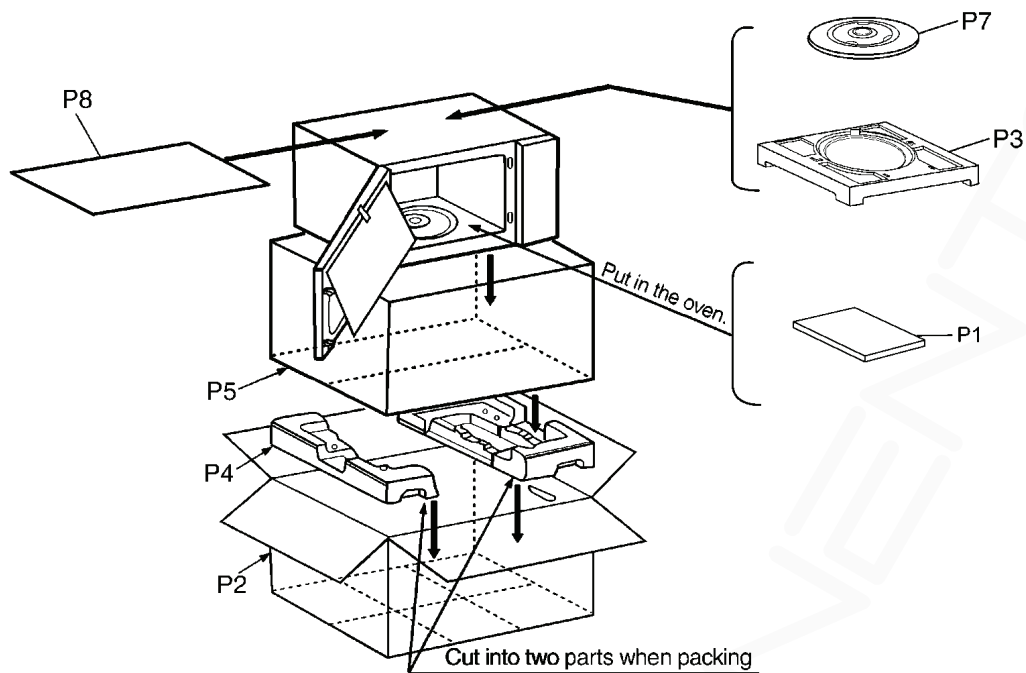
Ref. No.		Part No.	Part Name & Description	Pcs/Set	Remarks
D1		F3018BA70AP	DOOR KEY A	1	
D3	△	F302KBA00EP	DOOR E (U)	1	
D4		F30215G10XN	DOOR KEY SPRING	1	
D5	△	F30859V00XP	DOOR C	1	
D6	△	F3145BA00EP	DOOR SCREEN A	1	
D8	△	F302ABW80SEP	DOOR A (U)	1	
D10		F0172BN50QP	CAUTION LABEL B	1	

8.5. WIRING MATERIALS



Ref. No.	Part No.	Part Name & Description	Pcs/Set	Remarks
W1	F030ABW30BP	LEAD WIRE HARNESS	1	
W2	F030EBW80EP	H.V. LEAD WIRE	1	

8.6. PACKING AND ACCESSORIES



Ref. No.	Part No.	Part Name & Description	Pcs/Set	Remarks
P1	F0003BW40QP	INSTRUCTION MANUAL	1	
P2	F0102BW40SQP	PACKING CASE, PAPER	1	
P3	F01049V00XP	UPPER FILLER	1	
P4	F01059V00XP	LOWER FILLER	1	
P5	F01068100XN	P. E. BAG	1	
P7	A0601BA00EP	COOKING TRAY	1	
P8	F01924T00AP	SHEET	1	