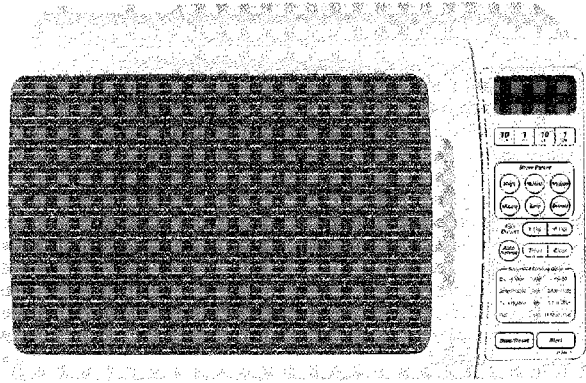


# Service Manual

Microwave Oven



MODELS	QPO	JPG
	Australia	New Zealand
NN-S449WF	○	○

## Specifications:

Model	Model
Specifications:	NN-S449WF
Power Source:	230-240V AC Single Phase, 50Hz
Power Requirement:	1300W
Output (IEC705-88)	900W
Microwave Frequency:	2450MHz
Timer:	99min. 99sec
Outside Dimensions:	510mm(W) × 360mm(D) × 306mm(H)
Oven Cavity Dimensions:	330mm(W) × 330mm(D) × 200mm(H)
Weigh:	15.0Kg
Output power: IEC705-88 Test Procedure	
Specifications subject to change without notice.	

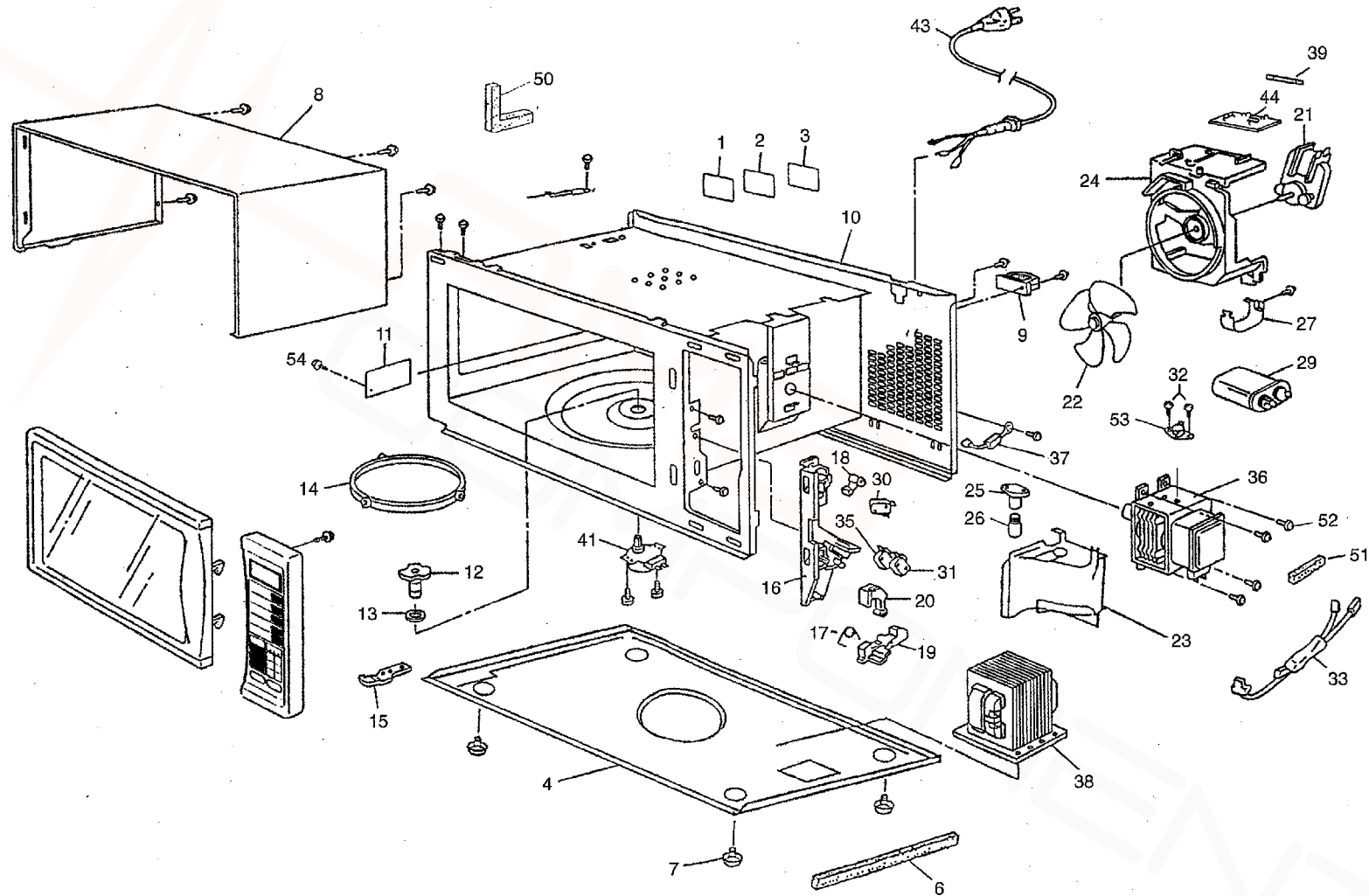
**Panasonic**®

© 1999 Shanghai Matsushita Microwave Oven Co.,Ltd  
All rights reserved. Unauthorized copying and distribution is a violation of law.

EXPLODED VIEW

NN-S449WF

EXPLODED VIEW AND PARTS LIST

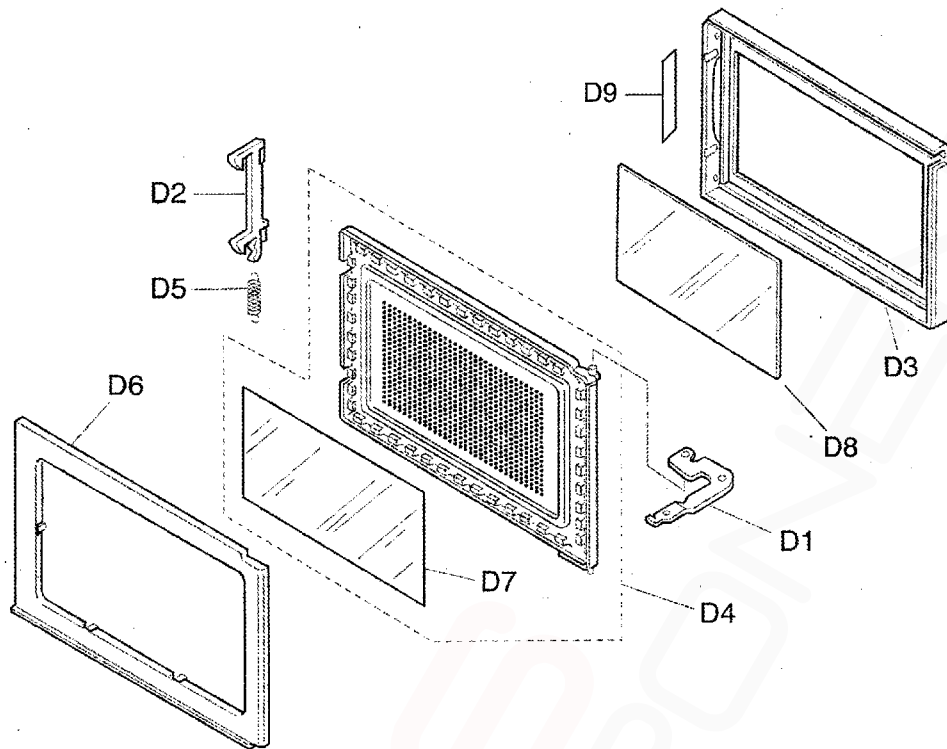


## PARTS LIST

- NOTE 1: When ording replacement part(s), please use part number(s) shown in this part list.  
Do not use description of the part.
- 2: Important safety notice:  
Components identified by  $\triangle$  mark have special characteristics important for safety.  
When replacing any of these components, use only manufacture's specified parts.

Ref.No.		Part No.	Part name & Description	Pcs/ Set	Remarks
1		F00069660QP	CAUTION LABEL	1	
2		F01729660JP	CAUTION LABEL B	1	JPG
3		F00079660QP	NAME PLATE	1	QPQ
3		F00079660JP	NAME PLATE	1	JPG
4		F10019660AP	BASE	1	
6		F0902000AL	CUSHION RUBBER A	1	
7		ANE1008-3W0	RUBBER FOOT	4	
8		F110D8100HXN	CABINET BODY (U)	1	
9		F11407000AP	STOPPER A	1	
10	$\triangle$	F201A9640XN	OVEN (U)	1	
11		A2055-1480	COVER	1	
12		A21315540AP	PULLY SHAFT	1	
13		ANE2177-F80	WASHER	1	
14		A290D5690AP	ROLLER RING (U)	1	
15	$\triangle$	F30077050AP	LOWER HINGE	1	
16	$\triangle$	F30208790XN	DOOR HOOK	1	
17		J3097-1480	LATCH SPRING	1	
18		F31368790XN	HOOK LEVER A	1	
19		F31378790XN	HOOK LEVER B	1	
20		F31388790XN	HOOK LEVER C	1	
21		A400A4760JP	FAN MOTOR	1	AC240V, 26W, SINGLE PHASE
22		ANE40086W0AP	FAN BLADE	1	
23		F40258100XN	AIR GUIDE A	1	
24		F41448100XN	ORIFICE	1	
25		A61524000AP	SOCKET	1	
26		A60304080BP	INCANDESCENT LAMP	1	240V, 50Hz, 25W
27		A60374740AP	CAPACITOR BRACKET	1	
29	$\triangle$	A60906660QP	H.V.CAPACITOR	1	1.07 $\mu$ F, 2000W
30	$\triangle$	ANE6142-1450	MICROSWITCH B	1	(V-16G-3C26-M)
31	$\triangle$	A61425180AP	MICROSWITCH B	1	(L-3C2-2)
32	$\triangle$	F61458100XN	THERMAL CUTOUT	1	190°C,15A
33	$\triangle$	A606V4760JP	PROTECTOR DIODE	1	
35	$\triangle$	A61785180AP	MICROSWITCH C	1	(L-2C2-2) (SHORT SWITCH)
36	$\triangle$	2M210-M1F	MAGNETRON	1	
37	$\triangle$	A6202-1540	DIODE	1	
38	$\triangle$	F621B4760JP	H.V.TRANSFORMER	1	
39	$\triangle$	ANE6230Z70BP	FUSE	1	8A, 250V
41		A63264760JP	TURNTABLE MOTOR	1	3W, 250V
43	$\triangle$	F900C9660QP	AC CORD W/PLUG	1	
44		F692Y9660QP	NOISE FILTER (U)	1	
50		F0925000AM	CUSHION RUBBER C	1	
51		F0902000AG	CUSHION RUBBER A	1	
52		XTWANE4+10RU	SCREW	4	
53		XTW3+6B	SCREW	2	
54		XST4+5VS	SCREW	1	
		F08879640XN	TOUCH UP PAINT	1	

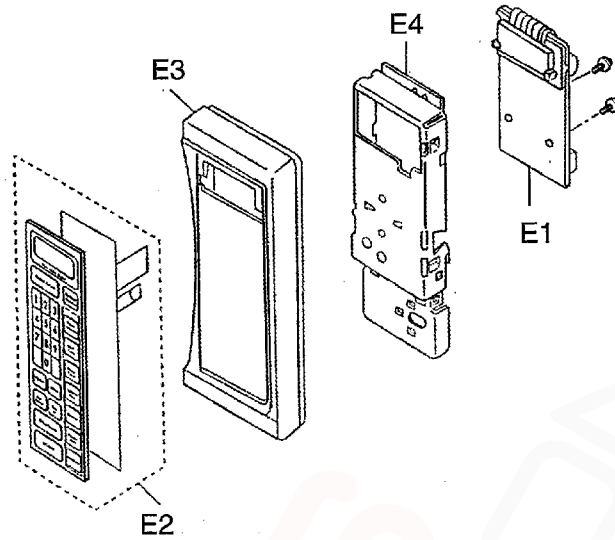
# DOOR ASSEMBLY



(S-966)

Ref.No.		Part No.	Part name & Description	Pcs/ set	Remarks
D1	△	F30067050AP	UPPER HINGE	1	
D2		F30188790XN	DOOR KEY A	1	
D3	△	F30019660HAP	DOOR A	1	
D4	△	F302K9620XN	DOOR E (U)	1	
D5		F30214000AP	DOOR KEY SPRING	1	
D6	△	F30857200AP	DOOR C	1	
D7	△	F31457200AP	DOOR SCREEN A	1	
D8		F31469660QP	DOOR SCREEN B	1	
D9		F02450000XN	DHHS LABEL	1	JPG

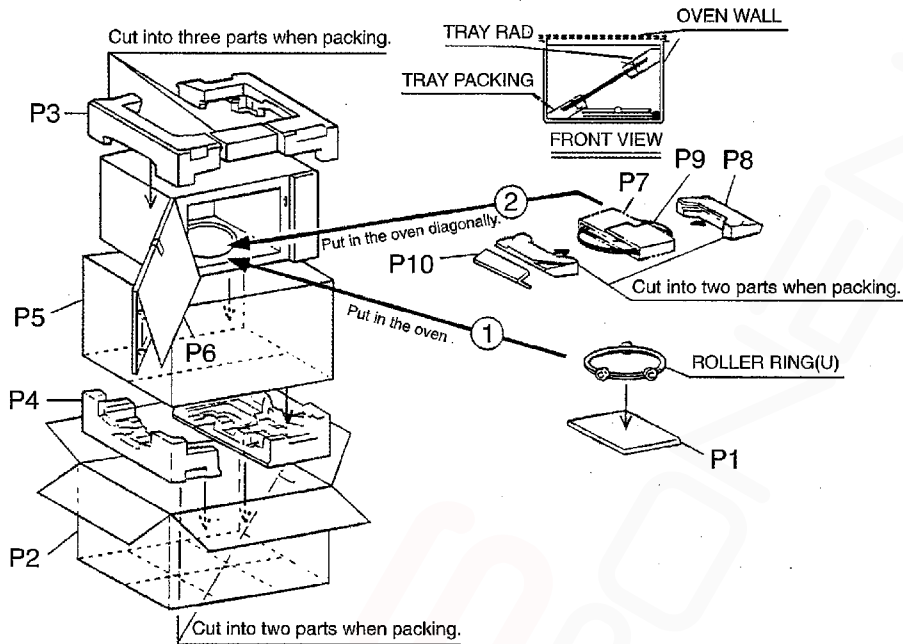
# ESCUTCHEON BASE ASSEMBLY



(S-966)

Ref.No.	Part No.	Part name & Description	Pcs/ set	Remarks
E1	F603L9660QP	D.P.CIRCUIT	1	RTL(w/component)
E2	F630Y9660HQP	MEMBRANE SWITCH (U)	1	w/escutcheon sheet
E3	F80349660HAP	ESCUTCHEON BASE	1	
E4	F81279660AP	BACK PLATE	1	

# PACKING AND ACCESORIES



(S-966)

Ref.No.	Part No.	Part name & Description	Pcs/ set	Remarks
P1	F00039660QP	INSTRUCTION BOOK	1	
P2	F01029660HQP	PACKING CASE, PAPER	1	
P3	F01044J50XN	UPPER FILLER	1	
P4	F01054J50XN	LOWER FILLER	1	
P5	F01068100XN	P. E. BAG	1	
P6	F01078100XN	DOOR SHEET	1	
P7	A01174800KN	TRAY PACKING B	1	
P8	A01135690QP	TRAY STYROL	1	
P9	A06015690QP	COOKING TRAY	1	
P10	F01087220KN	TRAY PACKING A	1	