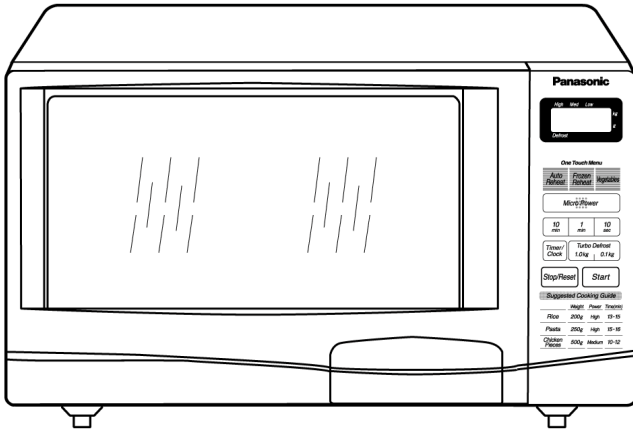


# Service Manual

## Microwave Oven



**NN-S215WF**  
**NN-S215MF**  
**NN-S235WF**  
**NN-S235MF**  
**NN-S235BF**

QPQ(Australia & New Zealand)

HPE(Hong Kong)

YPQ(Singapore)

MPQ(Malaysia)

TPE(Thailand, Indonesia)

LPK(Philippines)

YTE(Others)

KTE(UAE)

PTE( Iran)

KPQ(Kuwait, Doha, Qatar, Oman, Bahrain, Pakistan)

STM(Saudi Arabia)

ZPE(CIS Countries)

### Specification

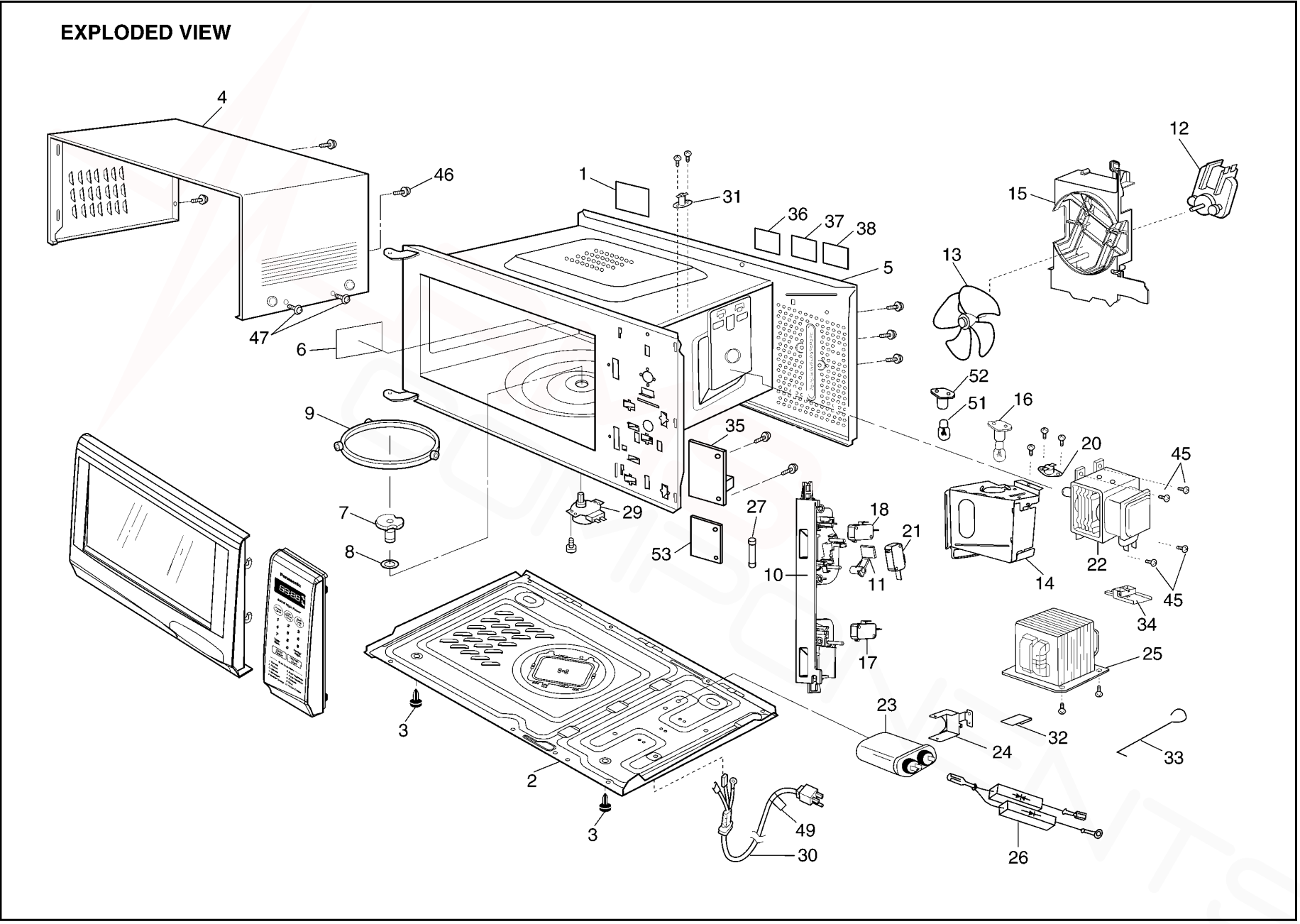
Model	S215WF/MF	S235WF/MF/BF
Power Source:	230VAC Single Phase, 50Hz ----- For QPQ Models 240VAC Single Phase, 50Hz ----- For KPQ, MPQ, YPQ Models 220VAC Single Phase, 50Hz ----- For KTE, ZPE, HPE, TPE, YTE, PTE Models 220VAC Single Phase, 50Hz/60Hz ----- For STM Models 220-230VAC Single Phase, 60Hz ----- For LPK Models	
Power Requirement:	1200W(Except STM) 1100W(STM 50Hz) 1500W(STM 60Hz)	1200W(Except STM) 1100W(STM 50Hz) 1500W(STM 60Hz)
Output:	800W	800W
Microwave Frequency:	2450MHz	
Timer:	30min.	29min.90sec
Outside Dimensions:	364mm(D) x 482mm(W) x 284mm(H)	
Oven Cavity Dimensions:	330mm(D) x 325mm(W) x 218mm(H)	
Weight:	11.0kg	
PbF	This product with PbF	
Specifications subject to change without notice.		

**Panasonic®**

© 2005 Panasonic Home Appliances Microwave Oven (Shanghai) Co., Ltd. All rights reserved. Unauthorized copying and distribution is a violation of law.

# 11 EXPLODED VIEW AND PARTS LIST

## 11.1. EXPLODED VIEW



## 11.2. PARTS LIST

**NOTE:**

- When ordering replacement part(s), please use part number(s) shown in this part list.  
Do not use description of the part.
- Important safety notice:  
Components identified by mark have special characteristics important for safety.  
When replacing any of these components, use only manufacture's specified parts.

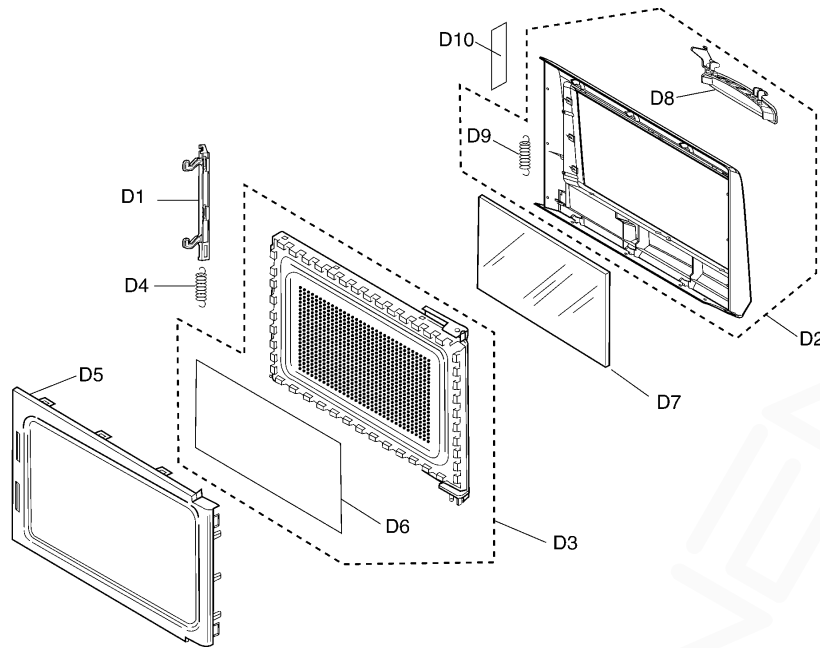
**NOTE:**

- "A" parts are supplied by CSD (Japan)  
"F" parts are supplied by PHAMOS (China)

Ref. No.	Part No.	Part Name & Description	Pcs/Set	Remarks
1	F01576S10HQP	NAME PLATE	1	S215WF QPQ
1	F01576S10HHP	NAME PLATE	1	S215WF HPE
1	F01576S10HTP	NAME PLATE	1	S215WF TPE
1	F01576S10STP	NAME PLATE	1	S215MF TPE
1	F01576S10HYT	NAME PLATE	1	S215WF YTE
1	F01576S10SYT	NAME PLATE	1	S215MF YTE
1	F01576S10HMP	NAME PLATE	1	S215WF MPQ
1	F01576S10HYQ	NAME PLATE	1	S215WF YPQ
1	F01576S10SYP	NAME PLATE	1	S215MF YPQ
1	F01576S10HLP	NAME PLATE	1	S215WF LPK
1	F01576S10HKT	NAME PLATE	1	S215WF KTE
1	F01576S10HPT	NAME PLATE	1	S215WF PTE
1	F01576S10HKP	NAME PLATE	1	S215WF KPQ
1	F01576S10HZP	NAME PLATE	1	S215WF ZPE
1	F01576S20HQP	NAME PLATE	1	S235WF QPQ
1	F01576S20HHP	NAME PLATE	1	S235WF HPE
1	F01576S20HTP	NAME PLATE	1	S235WF TPE
1	F01576S20STP	NAME PLATE	1	S235MF TPE
1	F01576S20HYT	NAME PLATE	1	S235WF YTE
1	F01576S20SYT	NAME PLATE	1	S235MF YTE
1	F01576S20HMP	NAME PLATE	1	S235WF MPQ
1	F01576S20HYP	NAME PLATE	1	S235WF YPQ
1	F01576S20SYP	NAME PLATE	1	S235MF YPQ
1	F01576S20HLP	NAME PLATE	1	S235WF LPK
1	F01576S20HKT	NAME PLATE	1	S235WF KTE
1	F01576S20HPT	NAME PLATE	1	S235WF PTE
1	F01576S20HKP	NAME PLATE	1	S235WF KPQ
1	F01576S20HST	NAME PLATE	1	S235WF STM
1	F01576S20HZP	NAME PLATE	1	S235WF ZPE
1	F01576S20SZP	NAME PLATE	1	S235MF ZPE
1	F01576S20BZP	NAME PLATE	1	S235BF ZPE
2	F10016S10XP	BASE	1	
3	F10084T00AP	RUBBER FOOT	2	
4	F110D6E70HXP	CABINET BODY (U)	1	S215WF,S235WF
4	F110D6E70SXP	CABINET BODY (U)	1	S215MF,S235MF
4	F110D6E70BXP	CABINET BODY (U)	1	S235BF
5	△ F200A-6S10	OVEN (U)	1	S215WF/MF (EXCEPT ZPE)
5	△ F200A6S10XP	OVEN (U)	1	S215WF (ZPE)
5	△ F200A6S20AP	OVEN (U)	1	S235WF/MF (EXCEPT ZPE)
5	△ F200A6S20XP	OVEN (U)	1	S235WF/MF/BF (ZPE)
6	F20556S10XP	COVER	1	
7	F21316E70XP	PULLY SHAFT	1	
8	F2177-F80	WASHER	1	
9	F290D6S10XP	ROLLER RING (U)	1	
10	△ F30206S10XP	DOOR HOOK	1	
11	F31365Q00AP	HOOK LEVER A	1	
12	F400A6S10XP	FAN MOTOR	1	
13	F4008-1E60	FAN BLADE	1	
14	F40256S10XP	AIR GUIDE A	1	
15	F41446S10XP	ORIFICE	1	
16	F612E5G50XN	INCANDESCENT LAMP (U)	1	EXCEPT HPE
17	△ J61424T00AP	MICRO SWITCH	1	PRIMARY LATCH SWITCH
17	△ J61424T00AP	MICRO SWITCH	1	SECONDARY LATCH SWITCH (S215WF/MF)
18	△ J61414T00AP	MICRO SWITCH	1	SECONDARY LATCH SWITCH (S235WF/MF/BF)
20	△ F61456S10XP	THERMAL CUTOUT	1	60°C ON,180°C OFF

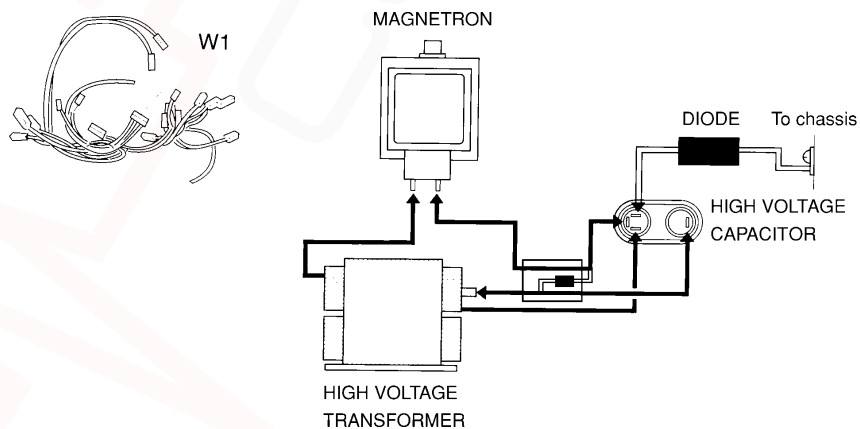
Ref. No.		Part No.	Part Name & Description	Pcs/Set	Remarks
21	△	J61784T00AP	MICRO SWITCH	1	SHORT SWITCH
22	△	2M211A-M1J	MAGNETRON	1	EXCEPT STM
22	△	2M210-M1J	MAGNETRON	1	STM
23	△	F60906N60XP	H.V.CAPACITOR	1	EXCEPT LPK & STM
23	△	F6090-1H70	H.V.CAPACITOR	1	LPK
23	△	F60906S20SN	H.V.CAPACITOR	1	STM
24		F60376S10XP	CAPACITOR BRACKET	1	
25	△	F621B6S10HP	H.V.TRANSFORMER	1	HPE, TPE, YTE, KTE, PTE, ZPE
25	△	F621B6S10LP	H.V.TRANSFORMER	1	LPK
25	△	F621B6S10MP	H.V.TRANSFORMER	1	QPQ, MPQ, YPQ, KPQ
25	△	F621B6S20ST	H.V.TRANSFORMER	1	STM
26	△	F605V6N60XP	DIODE (U)	1	
27	△	ANE6230Z70BP	FUSE	1	
29		F63266S10XP	TURNTABLE MOTOR	1	
30	△	F900C6S10QP	AC CORD W/PLUG	1	QPQ
30	△	F900C6S10YT	AC CORD W/PLUG	1	S215*F (HPE, MPQ, YTE, KTE, KPQ)
30	△	F900C6S20YT	AC CORD W/PLUG	1	S235*F (HPE, MPQ, YTE, KTE, KPQ)
30	△	F900C6S10TP	AC CORD W/PLUG	1	S215*F (TPE, PTE)
30	△	F900C6S10ZP	AC CORD W/PLUG	1	ZPE, S235*F (TPE, PTE)
30	△	F900C6S10YP	AC CORD W/PLUG	1	S215*F (YPQ)
30	△	F900C6S20YP	AC CORD W/PLUG	1	S235*F (YPQ)
30	△	F900C6S10LP	AC CORD W/PLUG	1	S215WF (LPK)
30	△	F900C6S20AP	AC CORD W/PLUG	1	S235WF (LPK)
30	△	F900C6S20ST	AC CORD W/PLUG	1	STM
31	△	F61456N00AP	THERMAL CUTOOUT	2	-20°C ON ,120°C OFF
32		F60366S10XP	CAPACITOR INSTALLATION BRACKET	1	
33		F11656S10XP	REINFORCE BRACKET	1	
34		F60706S10XP	INSULATE BRACKET	1	
35		F603Y6S20QP	D.P.CIRCUIT (DU)	1	S235*F (QPQ & ZPE)
35		F603Y6S20ST	D.P.CIRCUIT (DU)	1	S235WF (STM)
35		F603Y6S20XP	D.P.CIRCUIT (DU)	1	S235*F (EXCEPT QPQ, STM & ZPE)
36		F00065540MN	CAUTION LABEL	1	YPQ
37		F00068100HN	CAUTION LABEL	1	EXCEPT ZPE
38		F00065E90ZP	CAUTION LABEL	1	ZPE
41		F02846S10HYP	NO. LABEL	1	S215WF YPQ
41		F02846S10SYP	NO. LABEL	1	S215MF YPQ
41		F02846S20HYP	NO. LABEL	1	S235WF YPQ
41		F02846S20SYP	NO. LABEL	1	S235MF YPQ
45		XTWFA4+12T	SCREW	4	FOR MAGNETRON
46		XTWFA4+12D	SCREW	3	FOR CABINET BODY
47		XTTFA4+6BN	SCREW	2	FOR CABINET BODY SIDE
49		F02395E20KN	CORD CAUTION LABEL	1	KTE, PTE, KPQ, STM
51		F60305G60HN	INCANDESCENT LAMP	1	HPE
52		F61525H00AP	SOCKET	1	HPE
53		F692Y6S10QP	NOISE FILTER (U)	1	S215WF (QPQ & ZPE)

### 11.3. DOOR ASSEMBLY



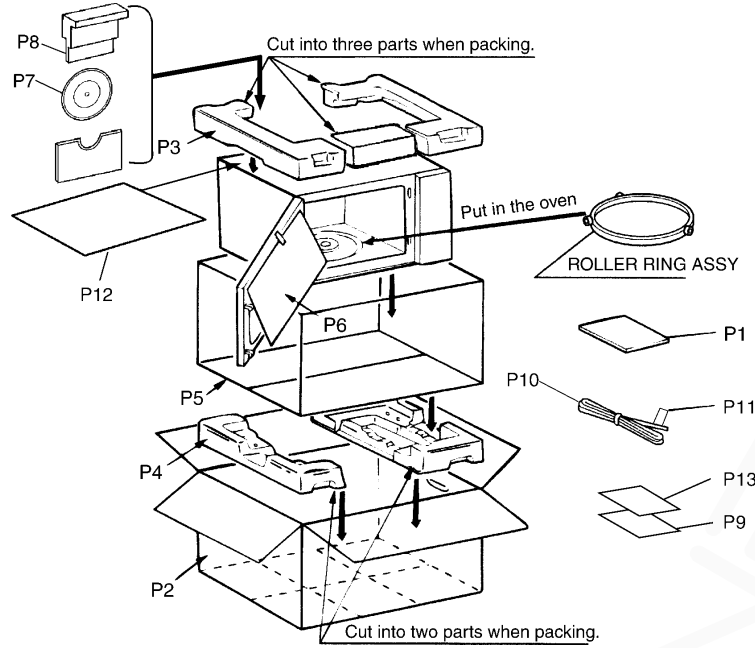
Ref. No.		Part No.	Part Name & Description	Pcs/Set	Remarks
D1		F30186S10XP	DOOR KEY A	1	
D2	△	F301A6S10HXP	DOOR A (U)	1	S215WF (EXCEPT QPQ & ZPE), S235WF (EXCEPT QPQ)
D2	△	F301A6S10HAP	DOOR A (U)	1	S215WF (QPQ, ZPE), S235WF (QPQ)
D2	△	F301A6S10SXP	DOOR A (U)	1	S215MF, S235MF
D2	△	F301A6S10BAP	DOOR A (U)	1	S235BF
D3	△	F302K6S10XP	DOOR E (U)	1	
D4		F30216S10XP	DOOR KEY SPRING	1	
D5	△	F30856S10XP	DOOR C	1	
D6	△	F31455G10XN	DOOR SCREEN A	1	
D7		F31466S10XP	DOOR SCREEN B	1	
D8		F30126S10KXP	DOOR HANDLE	1	S215WF (EXCEPT QPQ & ZPE), S235WF (EXCEPT QPQ)
D8		F30126S10HXP	DOOR HANDLE	1	S215WF (QPQ, ZPE), S235WF (QPQ)
D9		F30216S10XP	HANDLE SPRING	1	
D10		F01729660JP	CAUTION LABEL B	1	QPQ
D10		F02459660AP	DHHS LABEL	1	LPK

### 11.4. WIRING MATERIALS



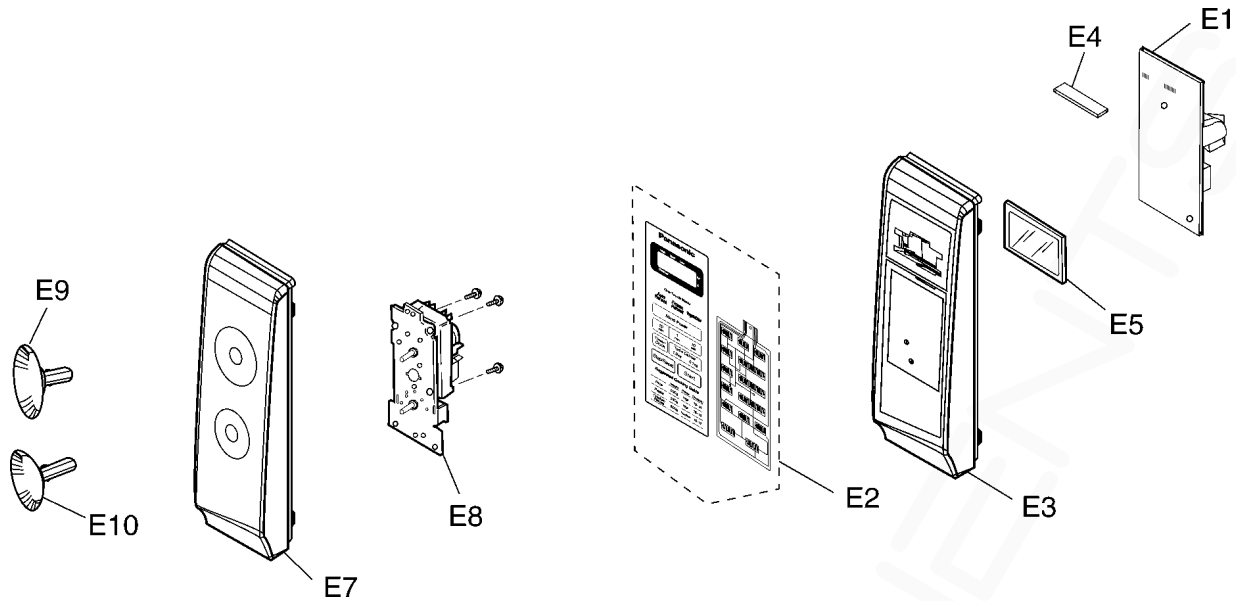
Ref. No.		Part No.	Part Name & Description	Pcs/Set	Remarks
W1		F030A-6S10	LEAD WIRE HARNESS	1	S215WF (QPQ, ZPE)
W1		F030A6S10XP	LEAD WIRE HARNESS	1	S215WF/MF (EXCEPT QPQ & ZPE)
W1		F030A6S20XP	LEAD WIRE HARNESS	1	S235WF/MF/BF

## 11.5. PACKING AND ACCESSORIES



Ref. No.	Part No.	Part Name & Description	Pcs/Set	Remarks
P1	F00036S10QP	INSTRUCTION MANUAL	1	QPQ
P1	F00036S10HP	INSTRUCTION MANUAL	1	HPE, TPE, YTE, MPQ, YPQ, LPK
P1	F00036S10KP	INSTRUCTION MANUAL	1	KTE, PTE, KPQ, STM
P1	F00036S10ZP	INSTRUCTION MANUAL	1	ZPE
P2	F01026S10HQP	PACKING CASE, PAPER	1	S215WF (QPQ)
P2	F01026S10HHP	PACKING CASE, PAPER	1	S215WF (HPE, TPE, MPQ, YPQ, LPK)
P2	F01026S10HYT	PACKING CASE, PAPER	1	S215WF (YTE)
P2	F01026S10HKT	PACKING CASE, PAPER	1	S215WF (KTE, PTE)
P2	F01026S10HKP	PACKING CASE, PAPER	1	S215WF (KPQ)
P2	F01026S10HZP	PACKING CASE, PAPER	1	S215WF (ZPE)
P2	F01026S10SHP	PACKING CASE, PAPER	1	S215MF (TPE, YPQ)
P2	F01026S10SYT	PACKING CASE, PAPER	1	S215MF (YTE)
P2	F01026S20HQP	PACKING CASE, PAPER	1	S235WF (QPQ)
P2	F01026S20HHP	PACKING CASE, PAPER	1	S235WF (HPE, TPE, MPQ, YPQ, LPK)
P2	F01026S20HYT	PACKING CASE, PAPER	1	S235WF (YTE)
P2	F01026S20HKT	PACKING CASE, PAPER	1	S235WF (KTE, PTE)
P2	F01026S20HKP	PACKING CASE, PAPER	1	S235WF (KPQ, STM)
P2	F01026S20HZP	PACKING CASE, PAPER	1	S235WF (ZPE)
P2	F01026S20SHP	PACKING CASE, PAPER	1	S235MF (TPE, YPQ)
P2	F01026S20SYT	PACKING CASE, PAPER	1	S235MF (YTE)
P2	F01026S20SZP	PACKING CASE, PAPER	1	S235MF (ZPE)
P2	F01026S20BZP	PACKING CASE, PAPER	1	S235BF (ZPE)
P3	F01045G40XN	UPPER FILLER	1	
P4	F01056S10XP	LOWER FILLER	1	
P5	F01066S10XP	P.E BAG	1	
P6	F01075G10XN	DOOR SHEET	1	
P7	A06015G10XN	COOKING TRAY	1	
P8	F01136E70XP	TRAY STYROL	1	
P9	F00065G40AP	CAUTION LABEL	1	QPQ
P10	F9164-5G10	EARTH LEAD	1	TPE
P11	F00324040XN	EARTH CAUTION LABEL	1	TPE
P12	F01924T00AP	SHEET	1	S215MF, S235MF/BF
P13	F04456S20HTP	OVERLAY	1	S235WF (TPE)
P13	F04456S20HMP	OVERLAY	1	S235WF (MPQ, YPQ)
P13	F04456S20HKT	OVERLAY	1	S235WF (KTE, PTE, KPQ, STM)
P13	F04456S20STP	OVERLAY	1	S235MF (TPE)
P13	F04456S20SMP	OVERLAY	1	S235MF (YPQ)

## 11.6. ESCUTCHEON BASE ASSEMBLY



Ref. No.	Part No.	Part Name & Description	Pcs/Set	Remarks
E1	F603L6S20QP	D.P.CIRCUIT (AU)	1	S235WF (QPQ)
E1	F603L6S20HP	D.P.CIRCUIT (AU)	1	S235*F (HPE, TPE, YTE)
E1	F603L6S20MP	D.P.CIRCUIT (AU)	1	S235*F (MPQ, YPQ)
E1	F603L6S20LP	D.P.CIRCUIT (AU)	1	S235WF (LPK)
E1	F603L6S20KP	D.P.CIRCUIT (AU)	1	S235WF (KPQ)
E1	F603L6S20KT	D.P.CIRCUIT (AU)	1	S235WF (KTE, PTE)
E1	F603L6S20ST	D.P.CIRCUIT (AU)	1	S235WF (STM)
E1	F603L6S20ZP	D.P.CIRCUIT (AU)	1	S235*F (ZPE)
E2	F630Y6S20HQP	MEMBRANE SWITCH (U)	1	S235WF (QPQ)
E2	F630Y6S20HHP	MEMBRANE SWITCH (U)	1	S235WF (HPE, TPE, YTE, MPQ, YPQ, LPK)
E2	F630Y6S20HKT	MEMBRANE SWITCH (U)	1	S235WF (KTE, PTE, KPQ, STM)
E2	F630Y6S20HZP	MEMBRANE SWITCH (U)	1	S235WF (ZPE)
E2	F630Y6S20SHP	MEMBRANE SWITCH (U)	1	S235MF (TPE, YTE, YPQ)
E2	F630Y6S20SZP	MEMBRANE SWITCH (U)	1	S235MF (ZPE)
E2	F630Y6S20BZP	MEMBRANE SWITCH (U)	1	S235BF (ZPE)
E3	F80346S20SXP	ESCUTCHEON BASE	1	S235WF
E3	F80346S20HXP	ESCUTCHEON BASE	1	S235MF
E3	F80346S20BXP	ESCUTCHEON BASE	1	S235BF
E4	F67006S20XP	RUBBER CONNECTOR	1	S235WF/MF/BF
E5	AEDDHJ6S20XP	DISPLAY	1	S235WF/MF/BF
E7	F80346S10HQP	ESCUTCHEON BASE	1	S215WF (QPQ)
E7	F80346S10HHP	ESCUTCHEON BASE	1	S215WF (HPE, TPE, YTE, MPQ, YPQ, LPK)
E7	F80346S10HKT	ESCUTCHEON BASE	1	S215WF (KTE, PTE, KPQ)
E7	F80346S10HZP	ESCUTCHEON BASE	1	S215WF (ZPE)
E7	F80346S10SHP	ESCUTCHEON BASE	1	S215MF (TPE, YTE, YPQ)
E8	F60016S10XP	TIMER	1	S215WF/MF (EXCEPT LPK)
E8	F60016S10LP	TIMER	1	S215WF (LPK)
E9	F80206S10KXP	TIMER KNOB	1	S215WF/MF
E10	F83926S10KXP	TIMER KNOB	1	S215WF/MF