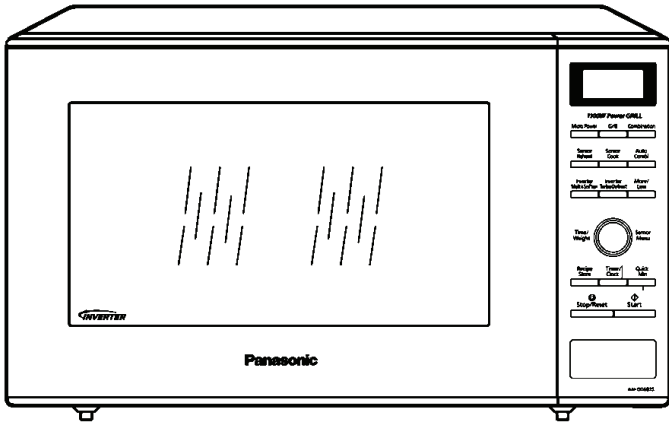


Service Manual

Microwave Oven

NN-GD682S

QPQ (Australia & New Zealand)

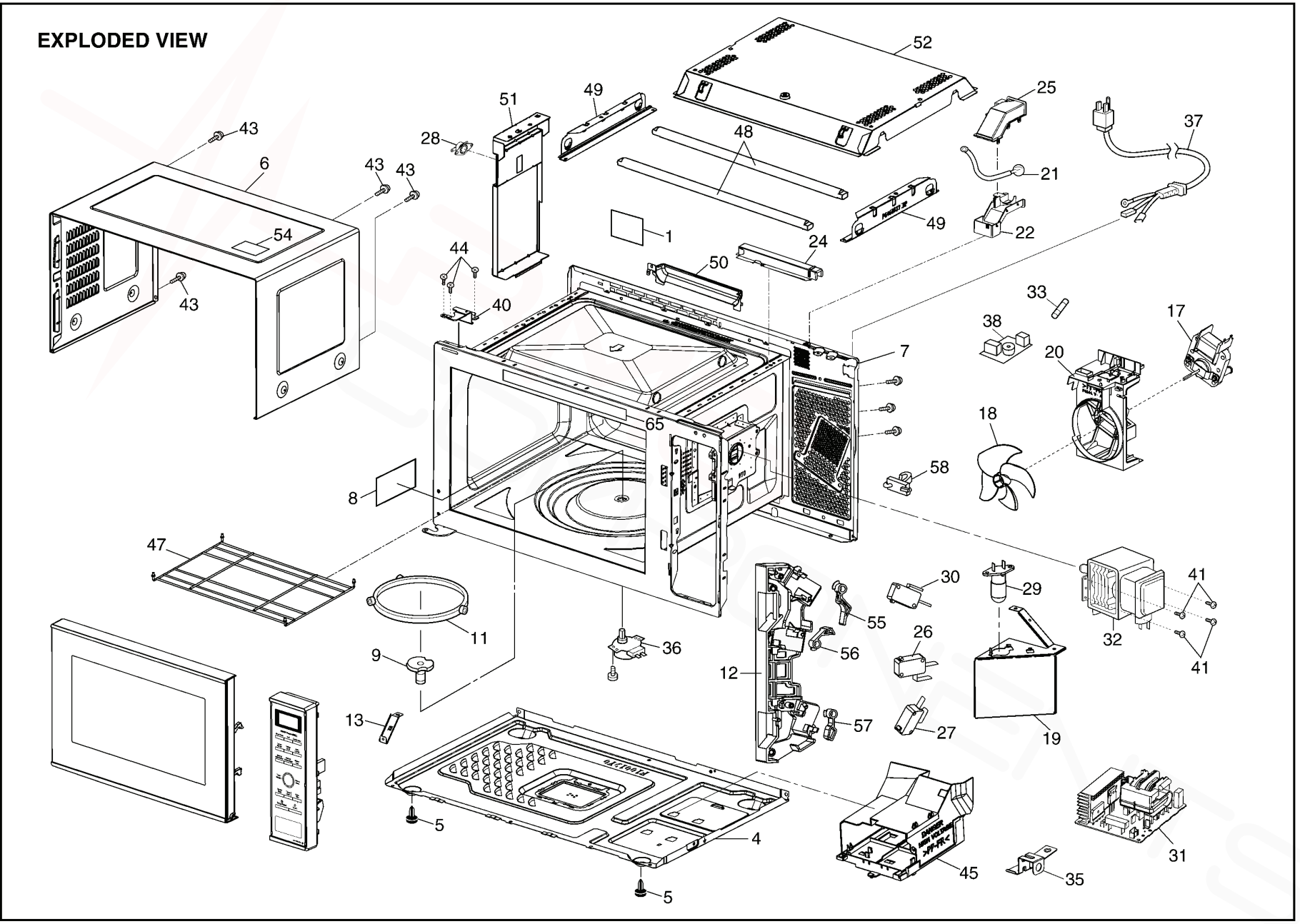


Specifications:

Model:		NN-GD682S
Specifications:		
Power Source:		230V-240V AC Single Phase, 50Hz
Power Consumption:	Microwave:	1050W
	Heater:	1160W
Output:	Microwave:	1000W
	Heater:	1100W
Microwave Frequency:		2450MHz
Timer:		30 min. / Stage (HIGH Power) ~ 3 Stage Maximum 90 min. 00 sec / Stage (Other Power Levels) ~ 3 Stage Maximum
Outside Dimensions:		525mm(W) x 414mm(D) x 310mm(H)
Oven Cavity Dimensions:		359mm(W) x 362mm(D) x 247mm(H)
Net Weight:		13.2kg
PbF		This product with PbF
Specifications subject to change without notice.		

8 EXPLODED VIEW AND PARTS LIST

8.1. EXPLODED VIEW



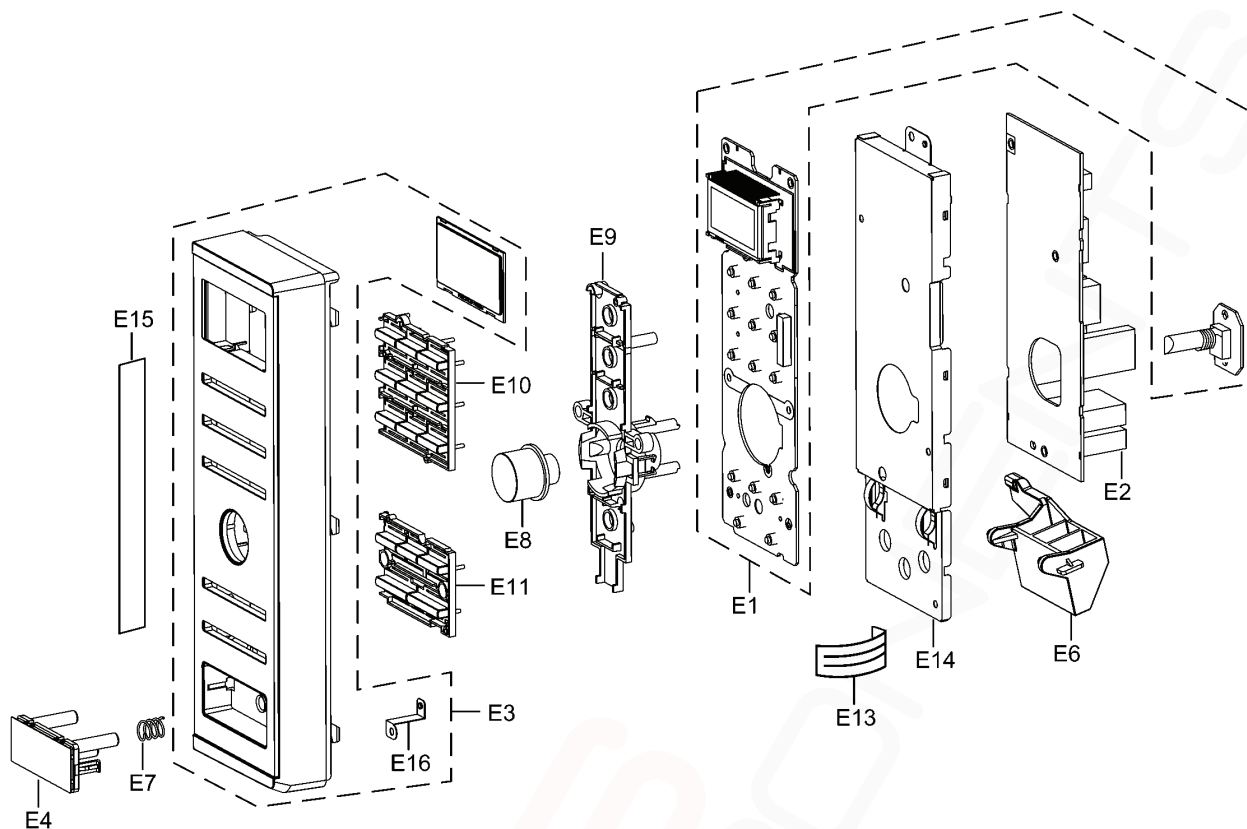
8.2. PARTS LIST

NOTE:

1. When ordering replacement part(s), please use part number(s) shown in this part list.
Do not use description of the part.
2. Important safety notice:
Components identified by \triangle mark have special characteristics important for safety.
When replacing any of these components, use only manufacture's specified parts.

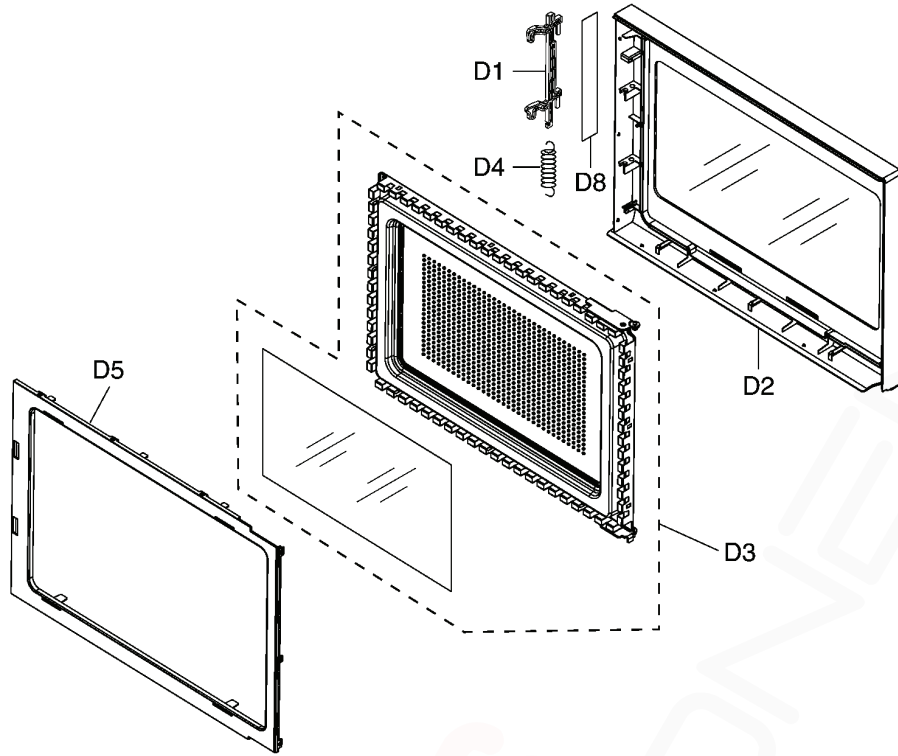
Ref. No.		Part No.	Part Name & Description	Pcs/Set	Remarks
1		F00066V00HP	CAUTION LABEL	1	
4		F10019Y00AP	BASE	1	
5		F10089W40HPS	RUBBER FOOT	2	
6		F10099Y00SAP	CABINET BODY (U)	1	
7	\triangle	F200A9X70SEP	OVEN (U)	1	
8		F20559Y00AP	COVER	1	
9		F21319Y00AP	PULLY SHAFT	1	
11		F290D6W50XP	ROLLER RING (U)	1	
12	\triangle	F30209X70EP	DOOR HOOK	1	
13		F11619Y00AP	REINFORCEMENT BRACKET	1	
17		F400A9Y00QP	FAN MOTOR	1	
18		F40089Y00AP	FAN BLADE	1	
19		F40259Y00AP	AIR GUIDE A	1	
20		F41449Y00AP	ORIFICE	1	
21		J607S4T00AP	STEAM SENSOR	1	
22		F64499X70EP	SENSOR COVER A	1	
24		F64509X70EP	SENSOR COVER B	1	
25		F65439X70EP	SENSOR COVER C	1	
26	\triangle	F61425U30XN	MICRO SWITCH	1	(PRIMARY LATCH SWITCH)
27	\triangle	F61415U30XN	MICRO SWITCH	1	(SECONDARY LATCH SWITCH)
28	\triangle	F6145-1F90	THERMAL CUTOUT	1	
29		F612E9X70EP	INCANDESCENT LAMP (U)	1	
30	\triangle	F61785U30XN	MICRO SWITCH	1	(SHORT SWITCH)
31	\triangle	F606YBA00QP	H.V. INVERTER (U)	1	
32	\triangle	2M261-M39R	MAGNETRON	1	
33	\triangle	F62306V60BP	FUSE	1	(10A)
35		F66629Y00AP	GROUNDING PLATE	1	
36		F63269P00HP	TURNTABLE MOTOR	1	
37	\triangle	F900C9X90QP	AC CORD W/PLUG	1	
38		F607X9J20QP	NOISE FILTER	1	
40		F30069X70EP	HINGE A	1	
41		XTWFL4+12T	SCREW	4	FOR MAGNETRON
43		XTWFA4+12D	SCREW	4	FOR CABINET BODY
44		XTWFA4+12LR	SCREW	3	FOR HINGE A
45		F65859X70EP	INVERTER BRACKET	1	
47		F67359X70EP	HEATER PROTECTOR	1	
48		F630G9X90QP	HEATER (AU)	2	
49		F64609X70EP	HEATER MOUNTING PLATE	2	
50		F40249X70EP	EXHAUST GUIDE A	1	
51		F203S9X70EP	LEFT HEATER PANEL (U)	1	
52		F22179X70EP	INSULATION PLATE	1	
54		F01508G60HP	NO TOUCHING LABEL	1	
55		F31389X70EP	HOOK LEVER C	1	
56		F31369X70EP	HOOK LEVER A	1	
57		F31379X70EP	HOOK LEVER B	1	
58		F11409W00XP	STOPPER	2	
65		F03349X90QP	MENU LABEL	1	

8.3. ESCUTCHEON BASE ASSEMBLY



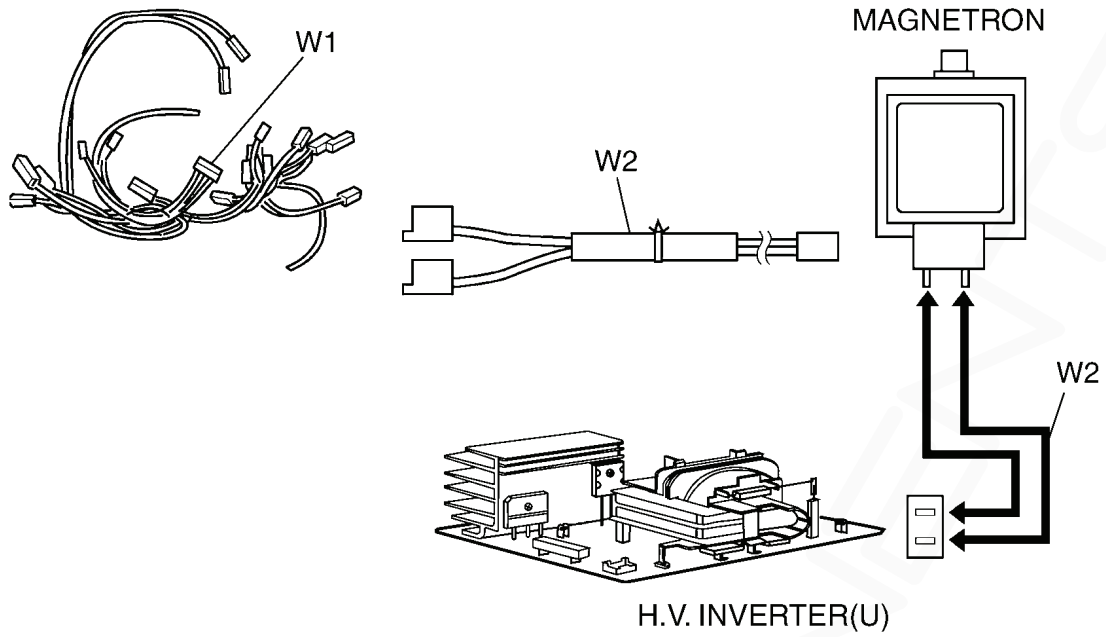
Ref. No.	Part No.	Part Name & Description	Pcs/Set	Remarks
E1	F603L9X90QP	D.P.CIRCUIT (AU)	1	
E2	F603Y9X90QP	D.P.CIRCUIT (DU)	1	
E3	F800L9X90SQP	ESCUTCHEON BASE (U)	1	
E4	F891P9Y40NAP	DOOR OPENING BUTTON (U)	1	
E6	F82569Y00AP	DOOR OPENING LEVER	1	
E7	F80375K00AP	COOK BUTTON SPRING	1	
E8	F803G9X90SQP	POP-OUT DIAL (U)	1	
E9	F80189Y40AP	DIAL SUPPORT	1	
E10	F82989Y40KAP	BUTTON	1	
E11	F82989Y90KAP	BUTTON B	1	
E13	F66167D00AP	FLAT CABLE	1	
E14	F81279Y40AP	BACK PANEL	1	
E15	F01579X90SQP	NAME PLATE	1	
E16	F33169Y40AP	GROUNDING METAL	1	

8.4. DOOR ASSEMBLY



Ref. No.		Part No.	Part Name & Description	Pcs/Set	Remarks
D1		F30189Y00AP	DOOR KEY A	1	
D2	⚠	F302A9X90SQP	DOOR A (U)	1	
D3	⚠	F301P9X70EP	DOOR E (U)	1	
D4		F30215G10XN	DOOR KEY SPRING	1	
D5	⚠	F30859Y00AP	DOOR C	1	
D8		F01726V00JP	CAUTION LABEL B	1	

8.5. WIRING MATERIALS



Ref. No.	Part No.	Part Name & Description	Pcs/Set	Remarks
W1	F030A9X90QP	LEAD WIRE HARNESS	1	(INCLUDING MAGNETRON THERMISTOR)
W2	F030E9Y10QP	H.V. LEAD WIRE	1	