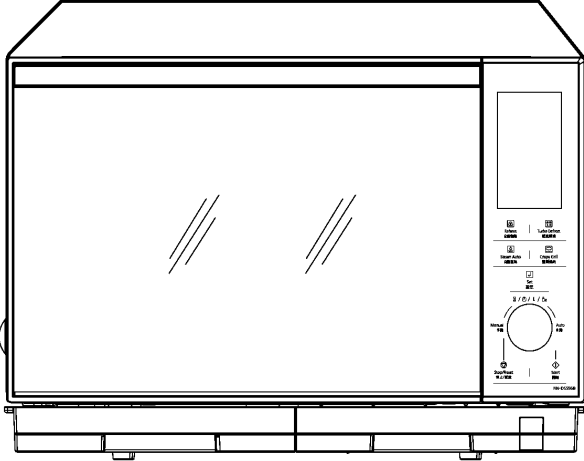


Service Manual

Microwave Oven

NN-DS596B

QPQ(Australia & New Zealand)



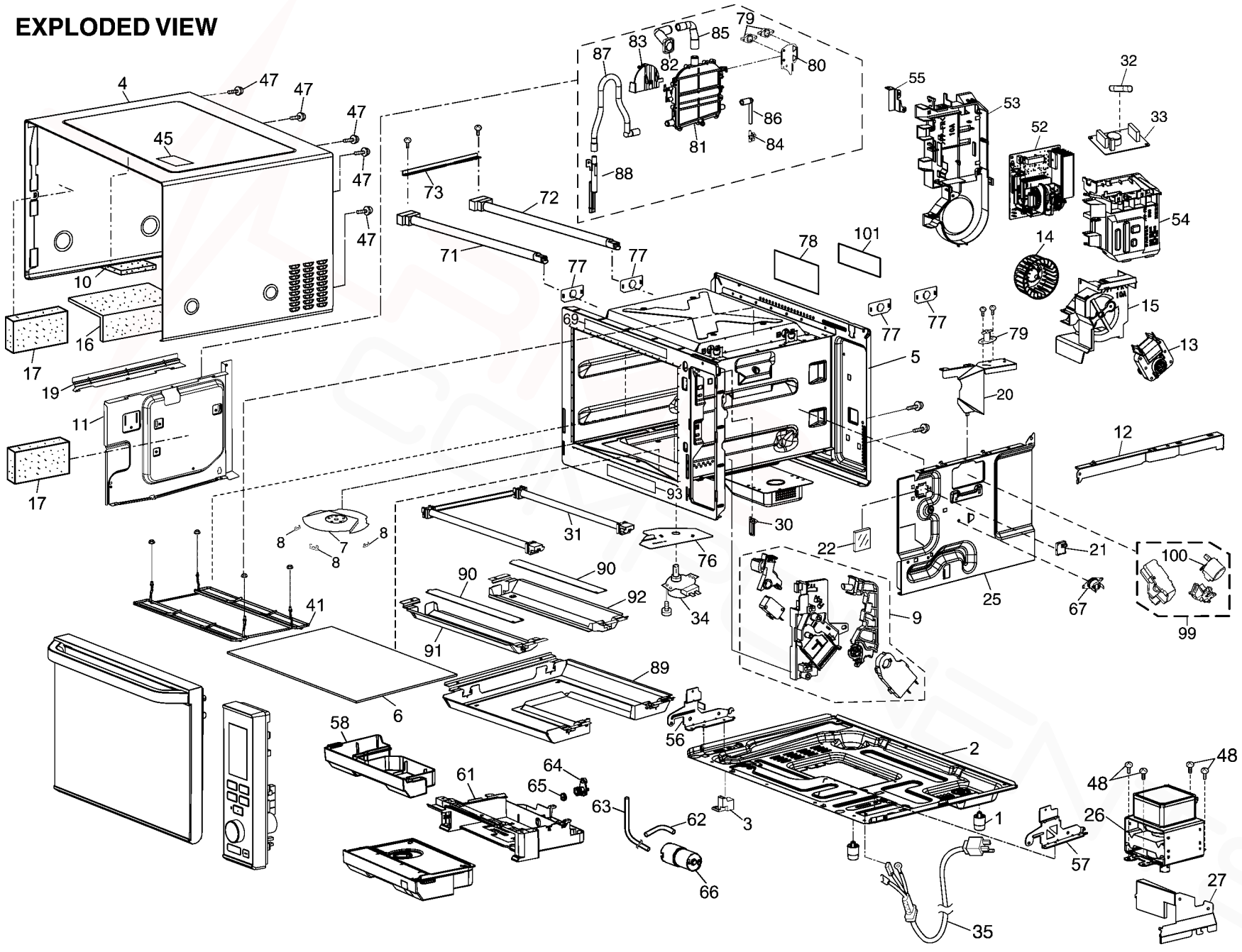
Specification

Models		NN-DS596B
Power Source:		230-240V AC Single Phase, 50Hz
Power Consumption:	Microwave	1000W
	Lower Heater	1270W
	Steam Heater	1020W
Output:	Microwave	1000W
	Upper Heater	1200W
	Lower Heater	1250W
	Steam Heater	1000W
Microwave Frequency:		2450MHz
Timer:		30 min. / Stage (HIGH Power) ~ 3 Stage Maximum 90 min. 00 sec / Stage (Other Power Levels) ~ 3 Stage Maximum
Outside Dimensions:		512mm(W) x 400mm(D) x 347mm(H)
Oven Cavity Dimensions:		335mm(W) x 350mm(D) x 238mm(H)
Net Weight:		17.5kg
PbF		This product with PbF
Specifications subject to change without notice.		

10 EXPLODED VIEW AND PARTS LIST

10.1. EXPLODED VIEW

EXPLODED VIEW



10.2. PARTS LIST

NOTE:

1. When ordering replacement part(s), please use part number(s) shown in this part list.

Do not use description of the part.

2. Important safety notice:

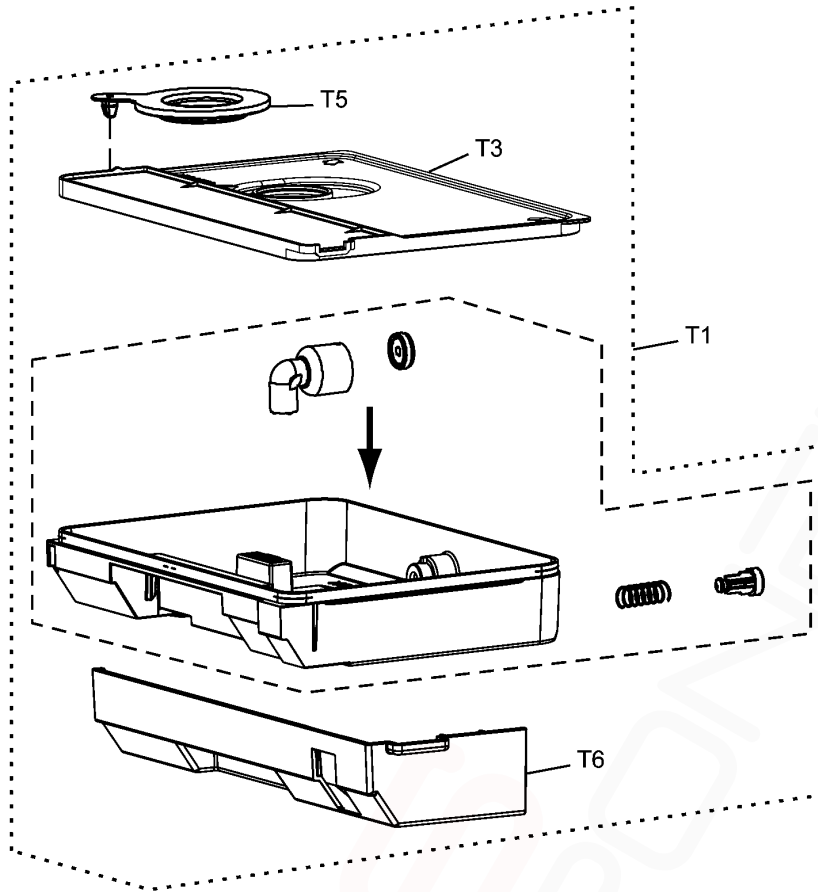
Components identified by \triangle mark have special characteristics important for safety.

When replacing any of these components, use only manufacture's specified parts.

Ref. No.	Part No.	Part Name & Description	Pcs/Set	Remarks
1	F1008-1S30S	RUBBER FOOT	2	
2	F1001BU00BP	BASE	1	
3	F1130-10V0S	FOOT	1	
4	F1009BU00BBP	CABINET BODY	1	
5	\triangle F200ABU00QP	OVEN	1	
6	F010TBU00BP	FLAT TABLE (U)	1	
7	F202KBU00BP	ANTENNA STIRRER (U)	1	
8	F20197J70XP	ANTENNA BRACKET	3	
9	\triangle F300W9L00XP	DOOR HOOK (U)	1	
10	F2242-10A0	ADIABATIC MATERIAL	1	
11	F2237-10V0	LEFT HEATER PANEL	1	
12	F2034-10A0	REINFORCEMENT BRACKET A	1	
13	F400ABU00BP	FAN MOTOR	1	
14	F4113-10A0	FAN BLADE	1	
15	F4004-10A0	FAN CASE	1	
16	F1221BU00BP	CUSHION RUBBER C	1	
17	F2242BU00BP	ADIABATIC MATERIAL	2	
19	F4026-10A0	AIR GUIDE B	1	
20	F4031-10A0	AIR GUIDE C	1	
21	F612E-10Q0	INCANDESCENT LAMP (U)	1	LED LAMP INSIDE
22	F6437-10A0	GLASS	1	
25	F2236-10A0	RIGHT HEATER PANEL	1	
26	\triangle 2M261-M36J3YB	MAGNETRON	1	
27	F4025-10A0	AIR GUIDE A	1	
30	F3105-1R40	LATCH GUIDE A	1	
31	F630GBU00BP	HEATER AU	1	
32	\triangle F62306V60BP	FUSE	1	10A
33	F607XB00QP	NOISE FILTER (U)	1	
34	F61449K80XP	STIRRER MOTOR	1	
35	\triangle F900C9M10QP	AC CORD W/PLUG	1	
41	F6735BU00BP	HEATER PROTECTOR	1	
45	F0150BH20BP	NO TOUCHING LABEL	1	
47	XTWBF4+8D	SCREW	5	FOR CABINET BODY
48	XTT4+8RDN	SCREW	4	FOR MAGNETRON
52	F606YBH20GP	H.V.INVERTER (U)	1	
53	F6585-10A0	INVERTER BRACKET	1	
54	F6720BU00BP	INVERTER COVER A	1	
55	F6662-10A0	GROUNDING PLATE	1	
56	F300B-10A0	LEFT HINGE (U)	1	
57	F300U-10A0	RIGHT HINGE (U)	1	
58	F8023-10A0	DRIP TRAY	1	
61	F9836-10A0	WATER TANK HOLDER	1	
62	F9200-1P00	TUBE A	1	(SHORT ONE)
63	F9201-10A0	TUBE B	1	(LONG ONE)
64	F4512-1P00	JOINT B	1	
65	F4427-1P00	SEAL	1	FIXED ON JOINT B
66	F400M-1S30	PUMP (U)	1	
67	\triangle F6145-1R40	THERMAL CUTOUT	1	130°C OPEN, -20°C CLOSE
69	F0334BU00QP	MENU LABEL	1	
71	F630HBU00BP	HEATER BU	1	

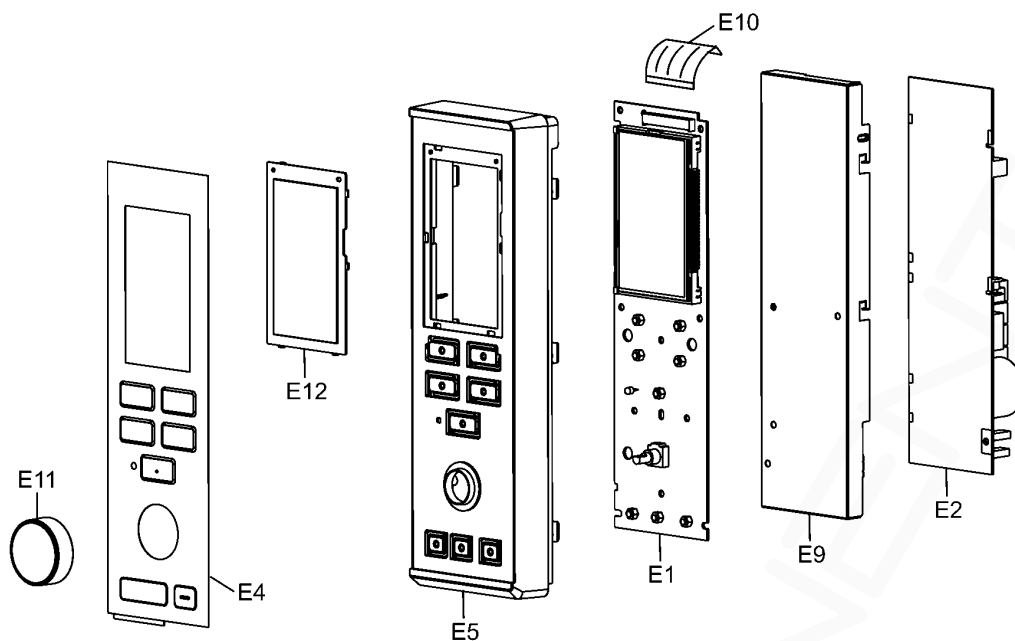
Ref. No.		Part No.	Part Name & Description	Pcs/Set	Remarks
72		F631DBU00BP	HEATER CU	1	
73		F6421BU00BP	LINK BAR	1	
76		F62449K80XP	LOWER COOLING PLATE	1	
77		F6180-1R40	SHEET A	4	
78		F00066V00HP	CAUTION LABEL	1	
79	△	F61458Z60XP	THERMAL CUTOUT	3	180°C OPEN, -20°C CLOSE
80		F6626-10A0	THERMAL CUTOUT BRACKET	1	
81		F611EBH70BP	HEATER DU	1	(STEAM HEATER)
82		F4406-1S30	ELBOW PIPE	1	
83		F4459-1S30	JOINT	1	
84		F4511-1S30	JOINT PIPE A	1	
85		F4516-10A0	JOINT PIPE B	1	
86		F9202-1S30	PIPE C	1	
87		F9210-10A0	DRAIN PIPE A	1	
88		F9231-10A0	NOZZLE	1	
89		F2277-10A0	LOWER HEATER PANEL	1	
90		F6515-10E0	MICA SHEET	2	
91		F6679-10A0	HEATER COVER A	1	
92		F6680-10A0	HEATER COVER B	1	
93		F0172BH20QP	CAUTION LABEL B	1	
99		F601L-10A0	IR SENSOR (U)	1	
100		A6760-1N40	SWING MOTOR	1	
101		F0007BU00BQP	NAME PLATE	1	

10.3. WATER TANK ASSEMBLY



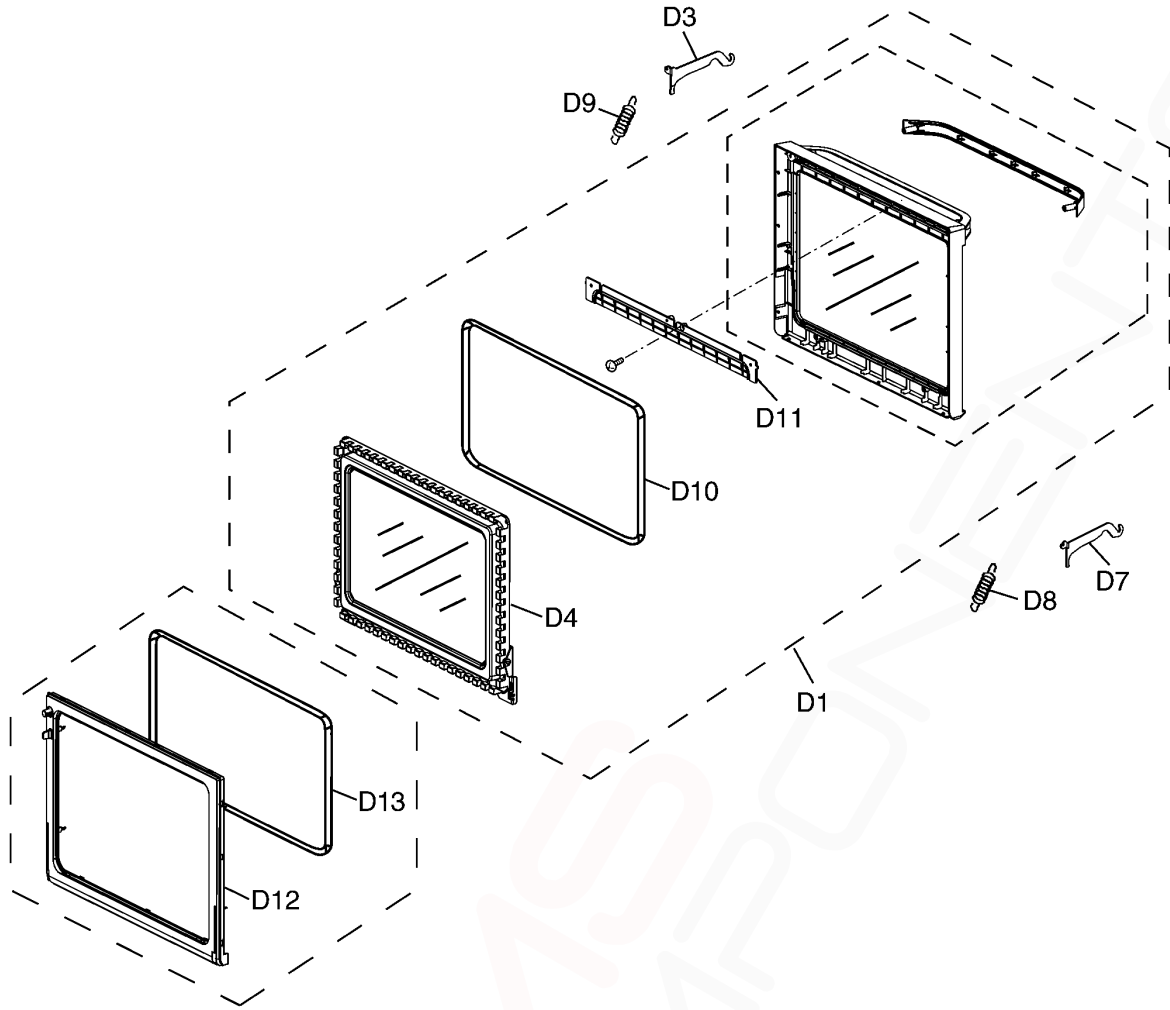
Ref. No.	Part No.	Part Name & Description	Pcs/Set	Remarks
T1	F060QBU00QP	WATER TANK (U)	1	(Including TANK LID & SEAL)
T3	F0611BU00BP	TANK LID	1	
T5	F1170-1P00	RUBBER COVER	1	
T6	F1600-10A0	FRONT COVER	1	

10.4. ESCUTCHEON BASE ASSEMBLY



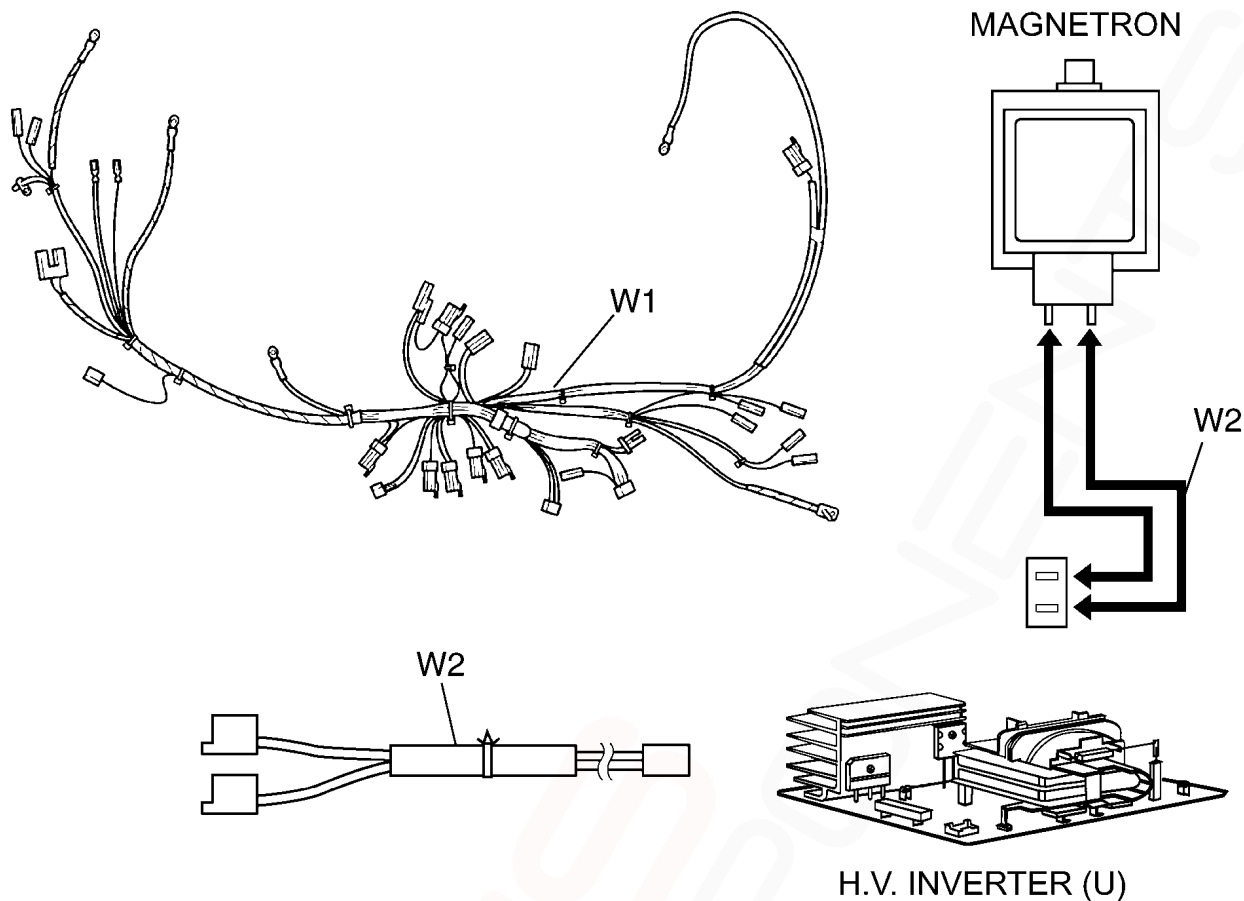
Ref. No.	Part No.	Part Name & Description	Pcs/Set	Remarks
E1	F603LBU00QP	D.P.CIRCUIT (AU)	1	
E2	F603YBU00HP	D.P.CIRCUIT (DU)	1	
E4	F8337BU00BQP	MEMBRANE SHEET	1	
E5	F8034-10C0B	ESCUTCHEON BASE	1	
E9	F8127-10A0	BACK PLATE	1	
E10	F6616BU00QP	FLAT CABLE	1	
E11	F804NBU00BQP	DIAL (U)	1	
E12	F8126-10C0	LCD COVER	1	

10.5. DOOR ASSEMBLY



Ref. No.		Part No.	Part Name & Description	Pcs/Set	Remarks
D1	⚠	F390LBU00BQP	DOOR U	1	
D3		F3044-10A0	DOOR ARM (RIGHT)	1	
D4	⚠	F301P-11H0	DOOR EU	1	
D7		F3054-10A0	DOOR ARM (LEFT)	1	
D8		F3230-10V0	DOOR KEY SPRING B	1	
D9		F3230-10V0	DOOR KEY SPRING B	1	
D10		F3198-10A0	SEAL	1	
D11		F3002-10A0	DOOR B	1	
D12	⚠	F3085-10A0	DOOR C	1	
D13		A3334-10A0	SEAL	1	

10.6. WIRING MATERIALS



Ref. No.	Part No.	Part Name & Description	Pcs/Set	Remarks
W1	F030ABU00QP	LEAD WIRE HARNESS	1	(Including OVEN THERMISTOR, STEAM THERMISTOR)
W2	F030E-10A0	H.V.LEAD WIRE	1	