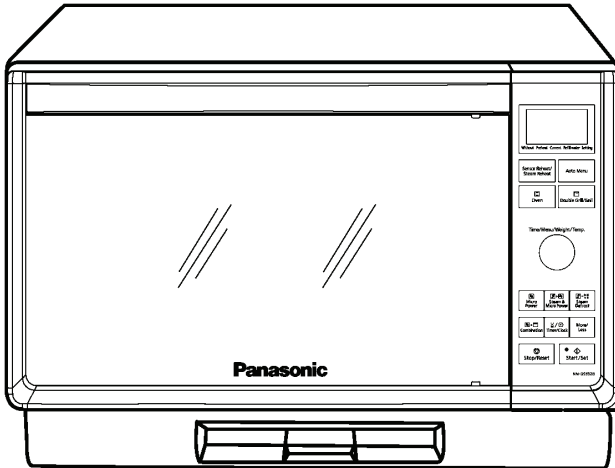


# Service Manual

## Microwave Oven

### NN-DS592B

QPQ (Australia & New Zealand)



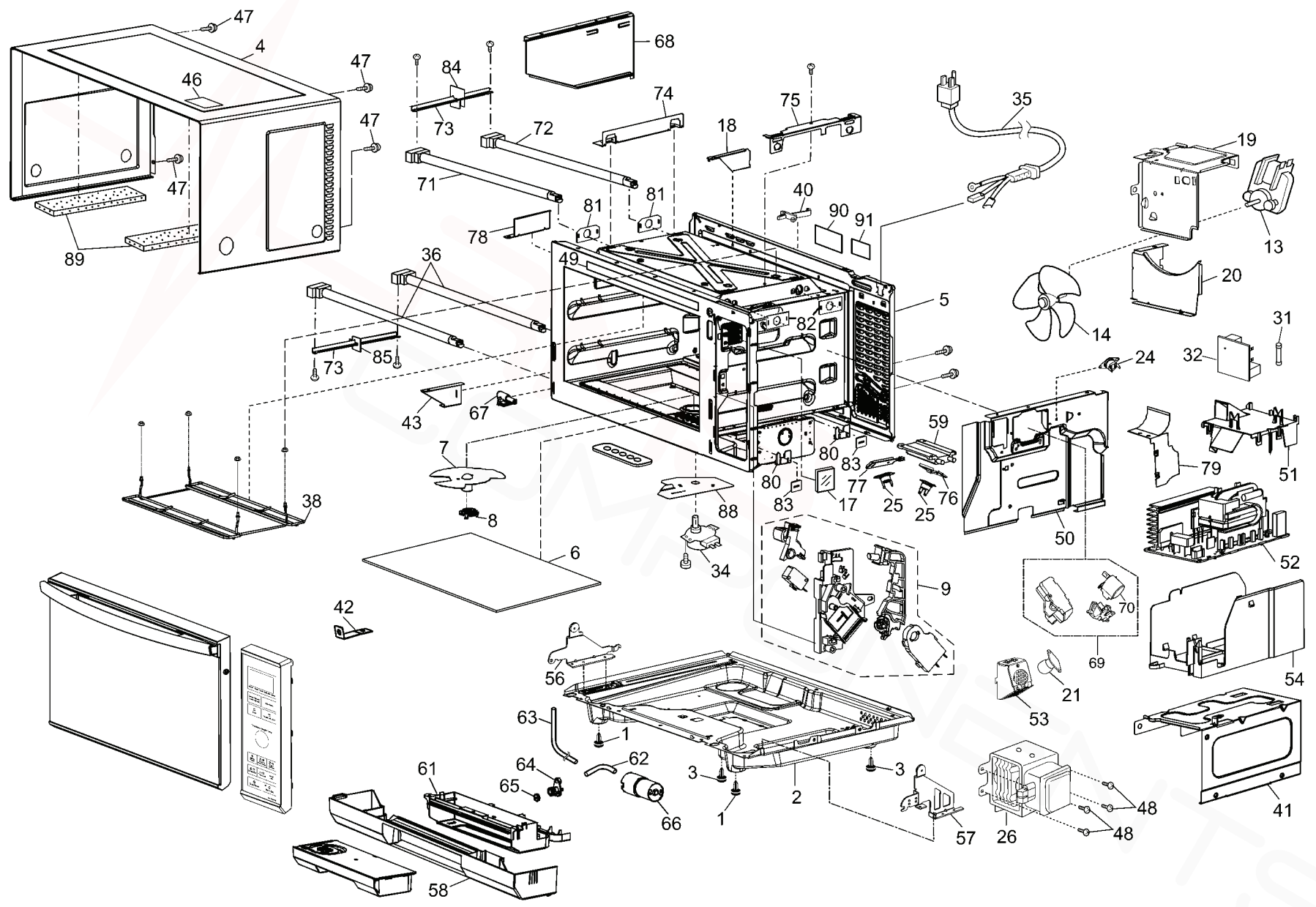
### Specification

Models		NN-DS592B
Power Source:		230V-240V AC Single Phase, 50Hz
Power Consumption:	Microwave	1080W
	Upper Heater	1250W
	Lower Heater	1380W
	Steam Heater	670W
Output:	Microwave	1000W
	Upper Heater	1200W
	Lower Heater	1300W
	Steam Heater	670W
Microwave Frequency:		2450MHz
Timer:		30 min. / Stage (HIGH Power) ~ 3 Stage Maximum 90 min. 00 sec / Stage (Other Power Levels) ~ 3 Stage Maximum
Outside Dimensions:		529mm(W) x 427mm(D) x 340mm(H)
Oven Cavity Dimensions:		338mm(W) x 336mm(D) x 204mm(H)
Net Weight:		15kg
PbF		This product with PbF
Specifications subject to change without notice.		

# 10 EXPLODED VIEW AND PARTS LIST

## 10.1. EXPLODED VIEW

### EXPLODED VIEW



## 10.2. PARTS LIST

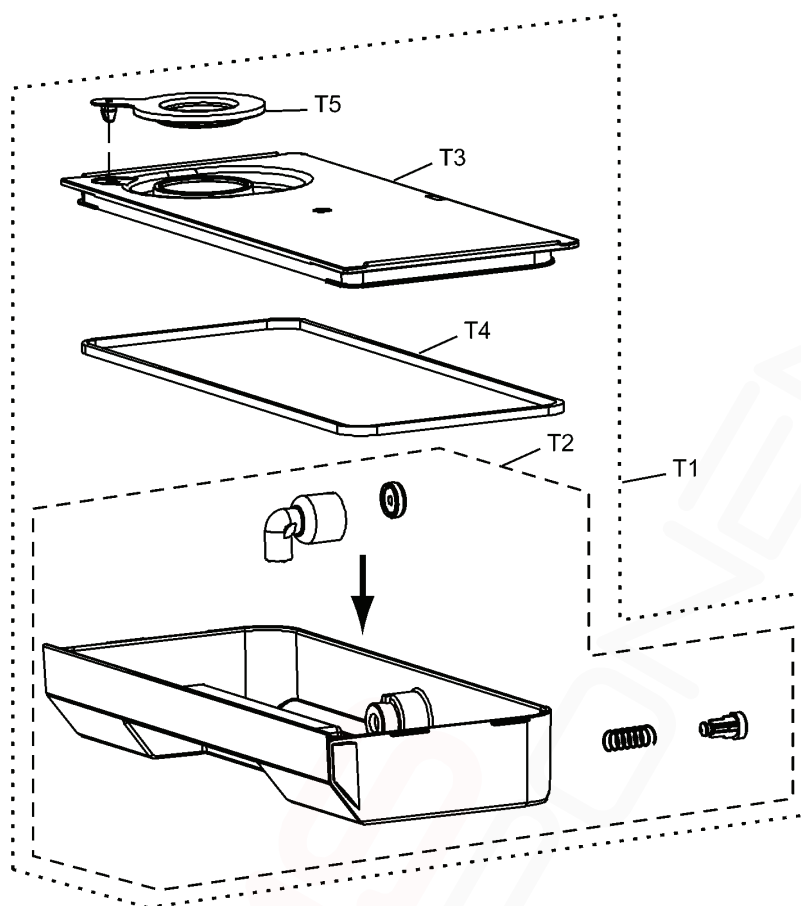
**NOTE:**

1. When ordering replacement part(s), please use part number(s) shown in this part list.  
Do not use description of the part.
2. Important safety notice:  
Components identified by  $\triangle$  mark have special characteristics important for safety.  
When replacing any of these components, use only manufacture's specified parts.

Ref. No.		Part No.	Part Name & Description	Pcs/Set	Remarks
1		F1008-1L40S	RUBBER FOOT	2	
2		F10019M10QP	BASE	1	
3		F1008-1F90S	RUBBER FOOT	2	
4		F10099M10BQP	CABINET BODY	1	
5	$\triangle$	F200A9M10QP	OVEN	1	
6		A010T9M10QP	FLAT TABLE (U)	1	
7		F202K-1P00	ANTENNA STIRRER (U)	1	
8		F2264-1R90	STIRRER BRACKET	1	
9	$\triangle$	F300W9L00XP	DOOR HOOK (U)	1	
13		F400A9K90HP	FAN MOTOR	1	
14		F4008-1E60	FAN BLADE	1	
17		F64377J70XP	GLASS	1	
18		F4047-1P00	AIR GUIDE E	1	
19		F41449L40ZP	UPPER ORIFICE	1	
20		F4146-1P00	LOWER ORIFICE	1	
21		F612E9L60XP	INCANDESCENT LAMP (U)	1	
24	$\triangle$	F61456V50HP	THERMAL CUTOUT	1	180°C OPEN
25	$\triangle$	F6145-1P00	THERMAL CUTOUT	2	210°C OPEN, -20°C CLOSE
26	$\triangle$	2M261-M32K5Y	MAGNETRON	1	
31	$\triangle$	F62306V60BP	FUSE	1	10A,250V
32		F607X9J50ZP	NOISE FILTER (U)	1	
34		F61449K80XP	STIRRER MOTOR	1	
35	$\triangle$	F900C9M10QP	AC CORD W/PLUG	1	
36		F630G9M10QP	HEATER AU	2	
38		F67359M10QP	HEATER PROTECTOR	1	
40		F11409K80XP	STOPPER	1	
41		F1161-1P00	INVERTER REINFORCE BRACKET A	1	
42		F11651P00V	REINFORCE BRACKET B	1	
43		F1556-1P00	REINFORCE BRACKET C	1	
46		F01509K90HP	NO TOUCHING LABEL	1	
47		XTWBF4+8D	SCREW	4	FOR CABINET BODY
48		XTT4+8RDN	SCREW	4	FOR MAGNETRON
49		F03349M10QP	MENU LABEL	1	
50		F2236-1P00	RIGHT HEATER PANEL	1	
51		F4027-1P00	INVERTER AIR GUIDE	1	
52		F606YBA00GP	H.V.INVERTER (U)	1	
53		F60749L00XP	INCANDESCENT LAMP BRACKET	1	
54		F65859L00XP	INVERTER BRACKET	1	
56		F300B-1Q90	LEFT HINGE (U)	1	
57		F300U9L00XP	RIGHT HINGE (U)	1	
58		F8023-1P00	DRIP TRAY	1	
59		J611E6E10MP	HEATER DU	1	(STEAM HEATER)
61		F9836-1P00	WATER TANK HOLDER	1	
62		F9200-1P00	TUBE A	1	(SHORT ONE)
63		F9201-1P00	TUBE B	1	(LONG ONE)
64		F4512-1P00	JOINT B	1	
65		F4427-1P00	SEAL	1	FIXED ON JOINT B
66		F400M-1Q50	PUMP (U)	1	
67		F4496-1P00	NOZZLE A	1	
68		F22379K80XP	LEFT HEATER PANEL	1	

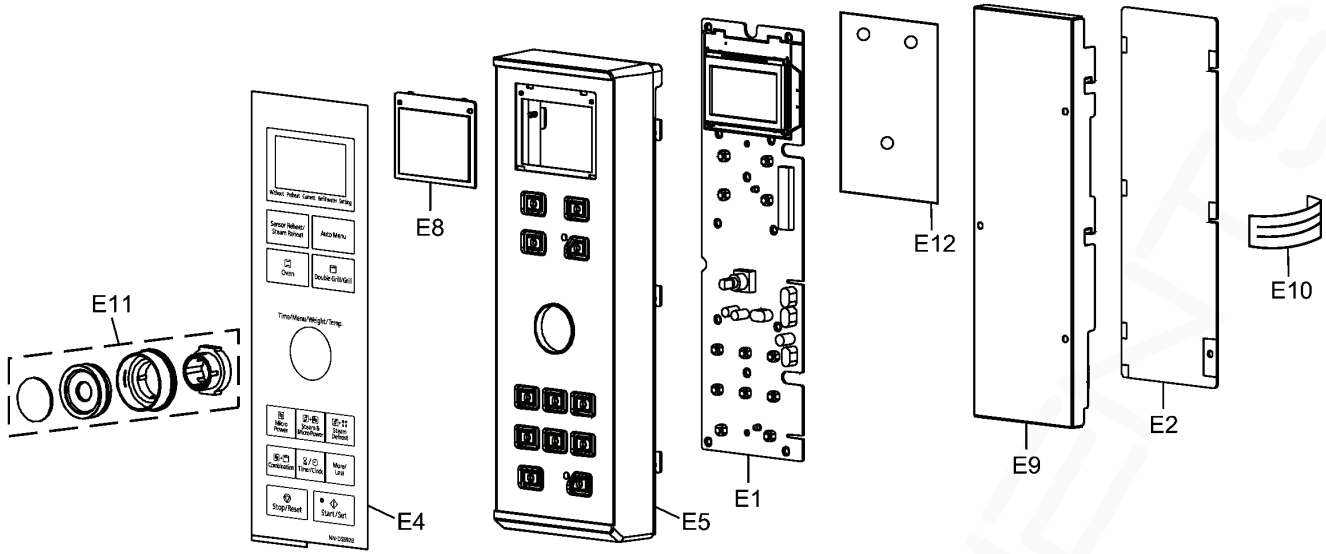
Ref. No.	Part No.	Part Name & Description	Pcs/Set	Remarks
69	F601L-1P00	IR SENSOR (U)	1	
70	A6760-1N40	SWING MOTOR	1	
71	F630H9M10QP	HEATER BU	1	
72	F631D9M10QP	HEATER CU	1	
73	F6421-1P00	LINK BAR	2	
74	F6461-1P00	HEATER BRACKET B	1	
75	F6460-1R90	HEATER BRACKET	1	
76	F6626-1P00	THERMAL CUTOOUT BRACKET	1	
77	F6626-1P00C	THERMAL CUTOOUT BRACKET	1	
78	F4028-1P00	AIR GUIDE D	1	
79	F40429L20CP	AIR GUIDE F	1	
80	F6462-1R90	HEATER BRACKET C	1	
81	F61819K90HP	SHEET B	2	
82	F61809K90HP	SHEET A	2	
83	F6156-1P00	INSULATION SHEET A	2	
84	F6247-1P00	INSULATION SHEET B	1	
85	F6243-1P00	INSULATION SHEET	1	
88	F62449K80XP	LOWER COOLING PLATE	1	
89	F1221-1P00	CUSHION RUBBER C	2	
90	F01579M10BQP	NAME PLATE	1	
91	F00066V00HP	CAUTION LABEL	1	

### 10.3. WATER TANK ASSEMBLY



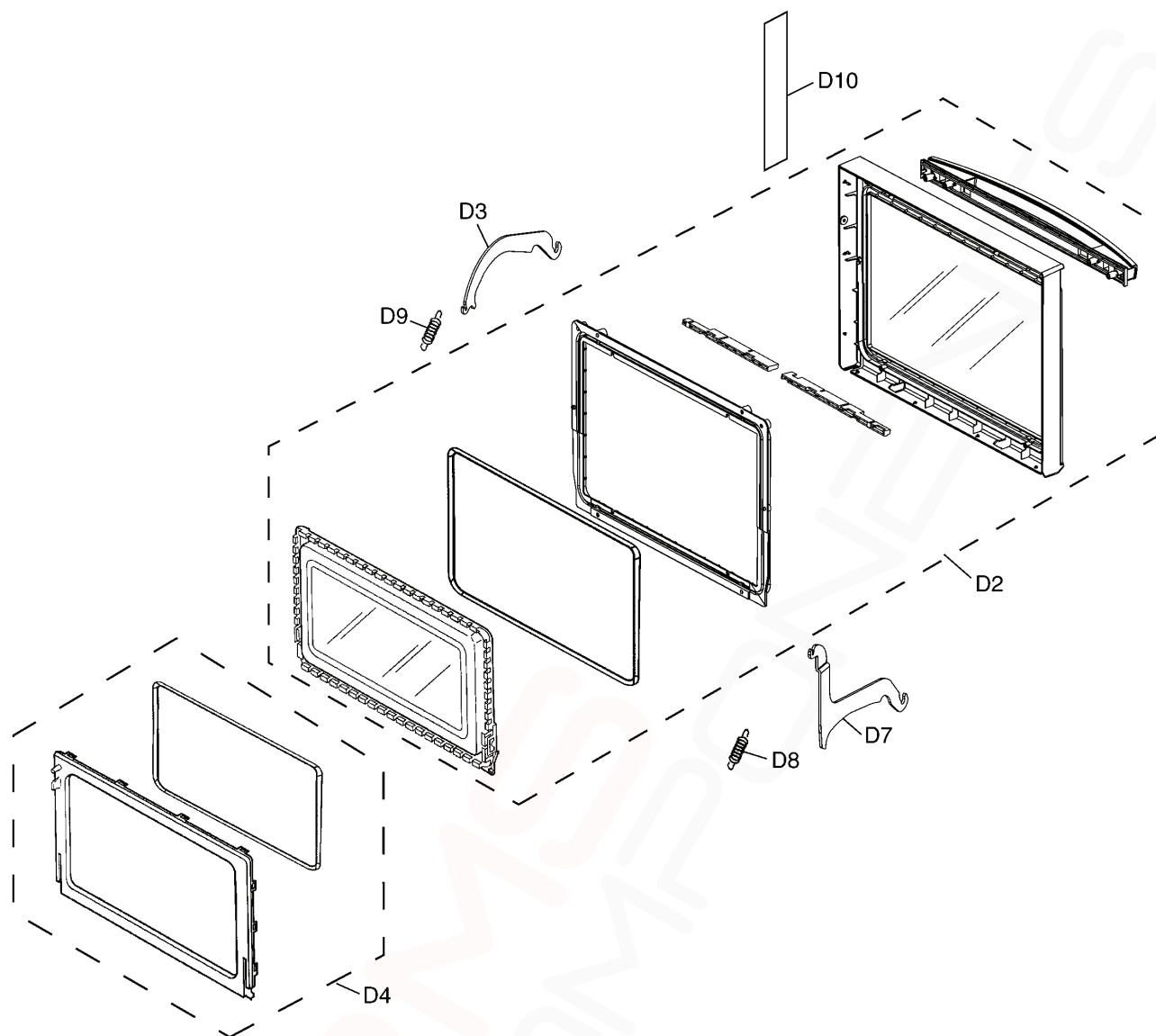
Ref. No.	Part No.	Part Name & Description	Pcs/Set	Remarks
T1	F060Q9K90HP	WATER TANK (U)	1	(Including TANK COVER & SEAL)
T2	F061A9K80XP	WATER TANK	1	
T3	F06119K90HP	TANK COVER	1	
T4	F4423-1P00	SEAL	1	
T5	F1170-1P00	RUBBER COVER	1	

### 10.4. ESCUTCHEON BASE ASSEMBLY



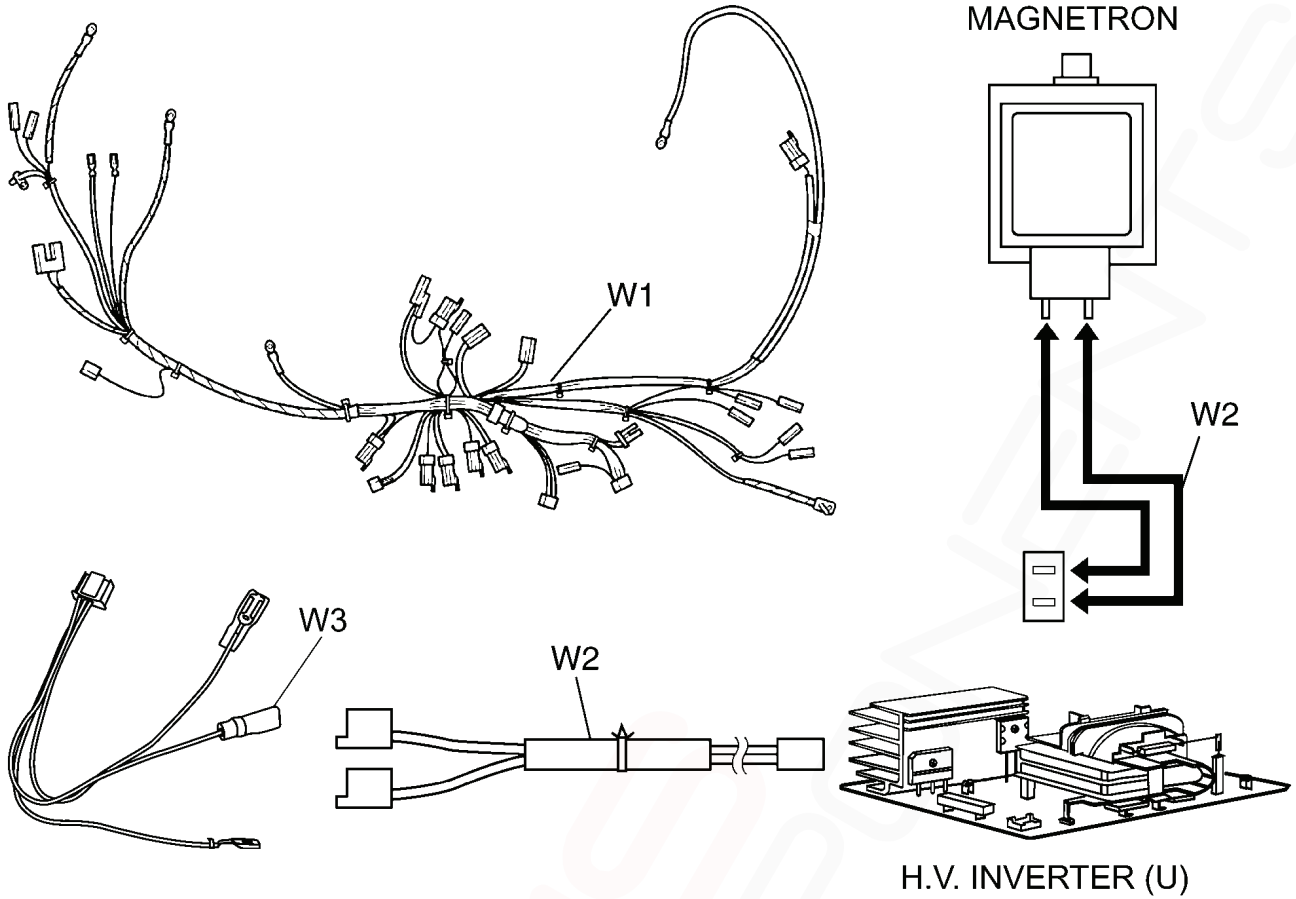
Ref. No.	Part No.	Part Name & Description	Pcs/Set	Remarks
E1	F603L9M10QP	D. P. CIRCUIT (AU)	1	
E2	F603Y9K90HP	D. P. CIRCUIT (DU)	1	
E4	F83379M10KQP	MEMBRANE SHEET	1	
E5	F80349M10BQP	ESCUTCHEON BASE	1	
E8	F81269L00XP	DISPLAY WINDOW	1	
E9	F8127-1P00	BACK PLATE	1	
E10	F66169A50BP	FLAT CABLE	1	
E11	F804N9L00XP	DIAL (U)	1	
E12	F6688-1P00	FILM	1	

### 10.5. DOOR ASSEMBLY



Ref. No.		Part No.	Part Name & Description	Pcs/Set	Remarks
D2	⚠	F390L9M10BQP	DOOR BU	1	
D3		F30449L00XP	DOOR ARM (RIGHT)	1	
D4	⚠	F301C9K80XP	DOOR CU	1	(INCLUDING DOOR C & SEAL)
D7		F3054-1P00	DOOR ARM (LEFT)	1	
D8		F32309L00XP	DOOR KEY SPRING B	1	(THICK ONE)
D9		F32319L00XP	DOOR KEY SPRING A	1	(THIN ONE)
D10		F01726V00JP	CAUTION LABEL B	1	

### 10.6. WIRING MATERIALS



Ref. No.	Part No.	Part Name & Description	Pcs/Set	Remarks
W1	F030A9M10QP	LEAD WIRE HARNESS	1	(Including MAGNETRON THERMISTOR, STEAM HEATER THERMISTOR and OVEN THERMISTOR)
W2	F030E-1R90	H.V. LEAD WIRE	1	
W3	F03539K80XP	LEAD WIRE HARNESS U	1	(Connect to Secondary Latch Switch etc.)