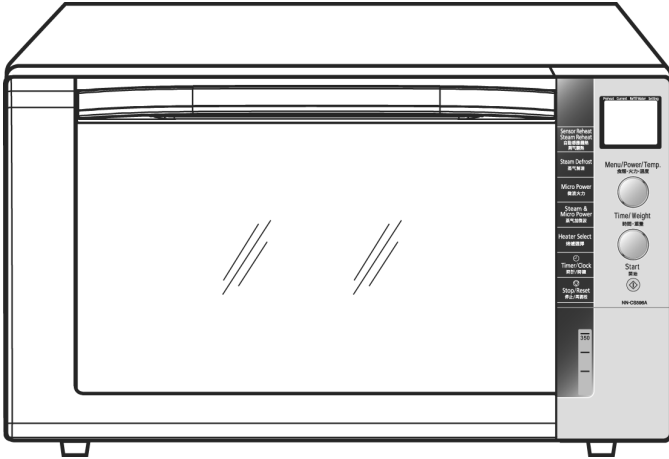


# Service Manual

## Microwave Oven



### NN-CS596A NN-CS596S

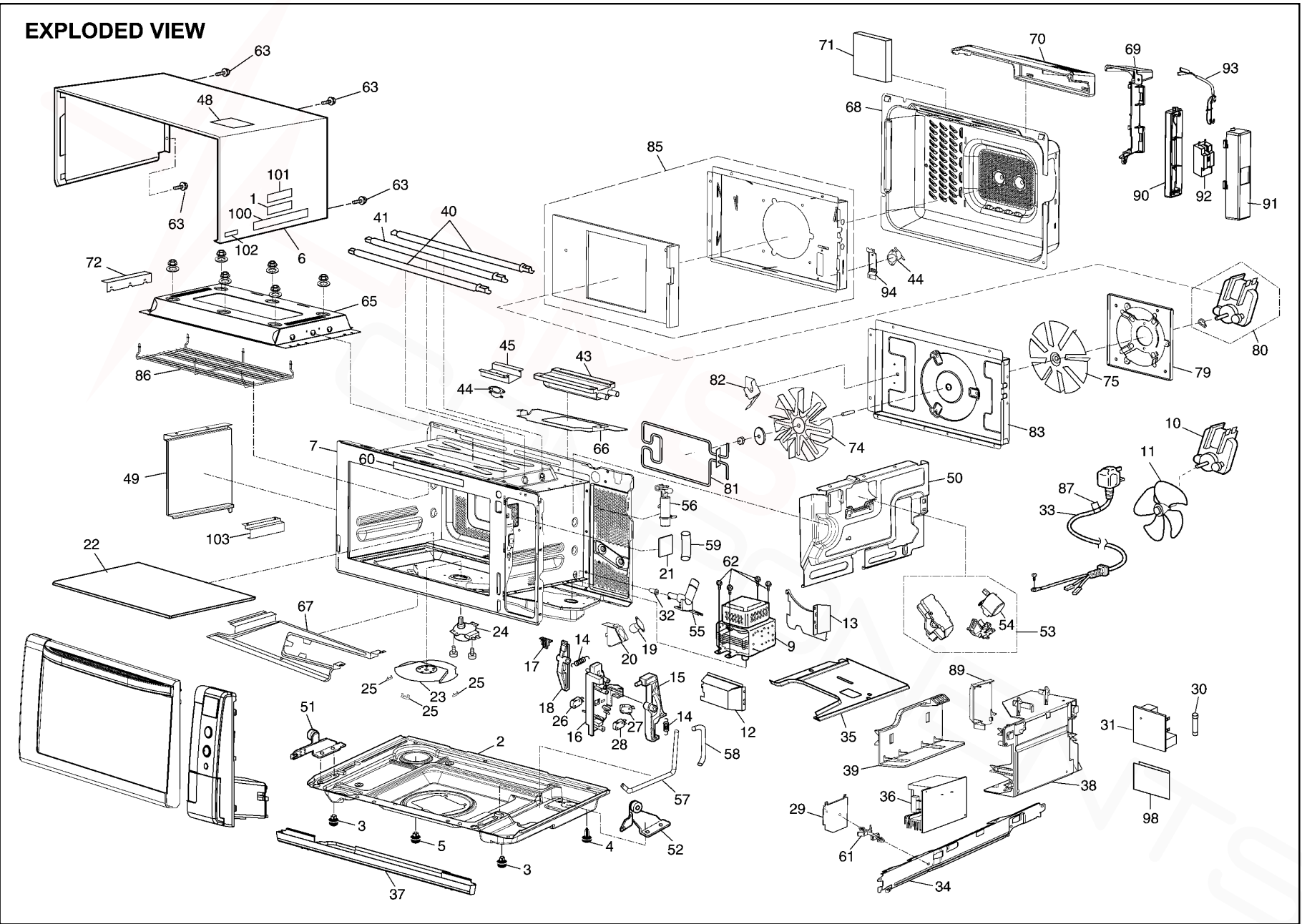
HPE(Hong Kong)  
YPQ(Singapore)  
MPQ(Malaysia)  
YTE(Others)  
KTE(UAE)  
PTE(Iran)  
QPQ(Australia & New Zealand)  
ZPE(CIS Countries)

### Specification

Models		NN-CS596A	NN-CS596S
Power Source:		230V AC Single Phase, 50Hz .....For QPQ Model 240V AC Single Phase, 50Hz .....For MPQ, YPQ Models 220V AC Single Phase, 50Hz .....For KTE, ZPE, HPE, YTE, PTE Models	
Power Requirement:	Microwave	950W	950W
	Ceramic Heater (1pc)	450W	450W
	Ceramic Heater (2pcs)	900W	900W
	Convection Heater	1400W	1400W
Output:	Microwave	1000W	1000W
	Ceramic Heater (1pc)	450W	450W
	Ceramic Heater (2pcs)	900W	900W
	Convection Heater	1400W	1400W
Microwave Frequency:		2450MHz	
Timer:		90 Min. 00 Sec.	
Outside Dimensions:		523mm(W) x 505mm(D) x 320mm(H)	
Oven Cavity Dimensions:		354mm(W) x 343mm(D) x 205mm(H)	
Weight:		22kg	
PbF		This product with PbF	
Specifications subject to change without notice.			

# 8 EXPLODED VIEW AND PARTS LIST

## 8.1. EXPLODED VIEW



## 8.2. PARTS LIST

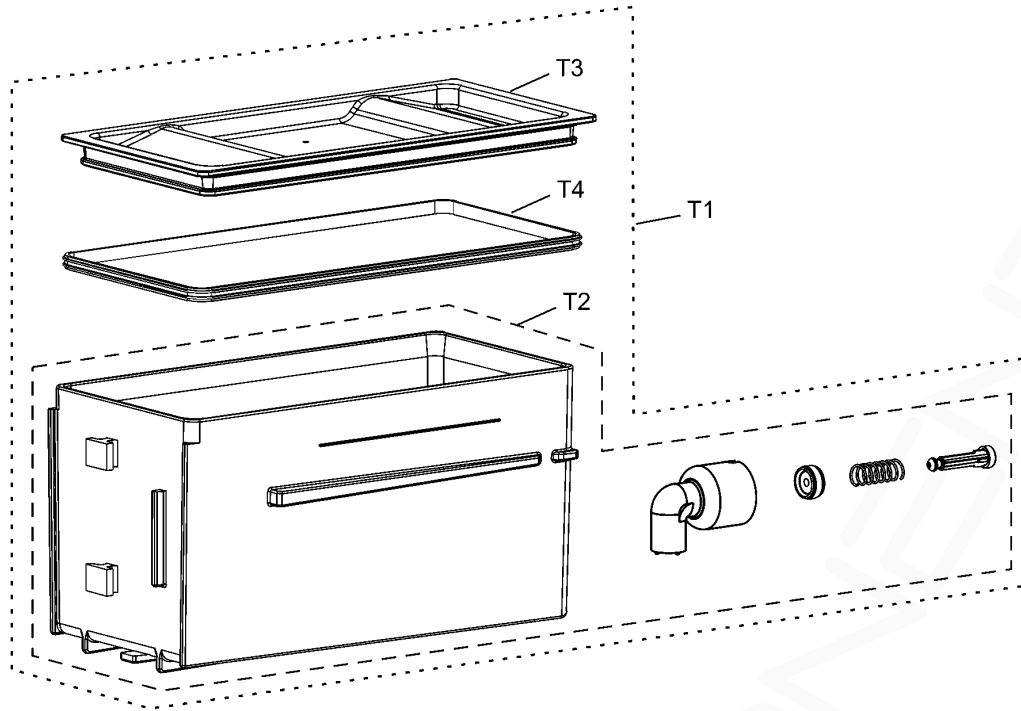
**NOTE:**

1. When ordering replacement part(s), please use part number(s) shown in this part list.  
Do not use description of the part.
2. Important safety notice:  
Components identified by  $\triangle$  mark have special characteristics important for safety.  
When replacing any of these components, use only manufacture's specified parts.

Ref. No.	Part No.	Part Name & Description	Pcs/Set	Remarks
1	F00066V00HP	CAUTION LABEL	1	EXCEPT ZPE
1	F00066W10ZP	CAUTION LABEL	1	ZPE
2	F10016Y40XPG	BASE	1	
3	F10087J60XP	RUBBER FOOT	2	
4	F10084T00AP	RUBBER FOOT	1	
5	F1008-1F90	RUBBER FOOT	1	
6	F110D6Y40SXP	CABINET BODY	1	EXCEPT HPE & QPQ
6	F110D6Y40SHP	CABINET BODY	1	HPE
6	F110D6Y40SBP	CABINET BODY	1	QPQ
7	$\triangle$ F200A6Y40HP	OVEN	1	
9	$\triangle$ 2M261-M32JY	MAGNETRON	1	
10	F400A7J70MP	FAN MOTOR	1	
11	F40085G10XN	FAN BLADE	1	
12	F40257J70XPG	AIR GUIDE A	1	
13	F40267J70XPG	AIR GUIDE B	1	
14	F30977J70XP	SPRING	2	
15	F31027J70XP	LATCH SWITCH LEVER	1	
16	$\triangle$ F31037J70XP	DOOR HOOK	1	
17	F31057J70XP	LATCH BRACKET	1	
18	F32497J70XP	LATCH SWITCH LEVER	1	
19	F612E6Y40BP	INCANDESCENT LAMP (U)	1	
20	F60746Y40XPG	INCANDESCENT LAMP BRACKET	1	
21	F64377J70XP	GLASS	1	
22	F010T6Y40HP	CERAMIC PLATE (U)	1	HPE, YPQ, YTE, MPQ
22	F010T6Y40BP	CERAMIC PLATE (U)	1	KTE, PTE, QPQ
22	F010T6Y40ZP	CERAMIC PLATE (U)	1	ZPE
23	F202K6Y40XPG	ANTENNA STIRRER (U)	1	
24	F61447J70XP	STIR MOTOR	1	
25	F20197J70XP	ANTENNA BRACKET	3	
26	$\triangle$ F61425U30XN	MICRO SWITCH	1	(V-15G-3C25) (PRIMARY LATCH SWITCH)
27	$\triangle$ A61425180AP	MICRO SWITCH	1	(D3V-16G-3C25) (SECONDARY LATCH SWITCH)
28	$\triangle$ A61785180AP	MICRO SWITCH	1	(D3V-1G-2C25) (SHORT SWITCH)
29	F603Y6Y40XP	D.P.CIRCUIT (DU)	1	
30	$\triangle$ F62306V60BP	FUSE	1	10A/250V
31	F692Y6Y40XP	NOISE FILTER (U)	1	HPE, YPQ, YTE, MPQ, KTE, PTE
31	F692Y6Y40ZP	NOISE FILTER (U)	1	QPQ, ZPE
32	F45006Y40XP	JACKET	1	
33	$\triangle$ F900C6Y40YK	AC CORD W/PLUG	1	HPE, YTE, MPQ, KTE
33	$\triangle$ F900C6Y40YP	AC CORD W/PLUG	1	YPQ
33	$\triangle$ F900C6Y40PT	AC CORD W/PLUG	1	PTE
33	$\triangle$ F900C7J70ZP	AC CORD W/PLUG	1	ZPE
33	$\triangle$ F900C6Y40QP	AC CORD W/PLUG	1	QPQ
34	F20347J70XPG	REINFORCE BRACKET A	1	
35	F2036-1K00	REINFORCE BRACKET B	1	
36	$\triangle$ F606YM300BP	H.V.INVERTER (U)	1	QPQ
36	$\triangle$ F606YM300GP	H.V.INVERTER (U)	1	EXCEPT QPQ
37	F80236Y40BP	DECORATING PLATE (COLLECTOR PAN)	1	
38	F6585-1K00	INVERTER BRACKET A	1	
39	F67637J70XP	INVERTER BRACKET B	1	
40	F630G6Y40XP	HEATER	2	HPE, YTE, KTE, PTE, ZPE
40	F630G6Y40MP	HEATER	2	YPQ, MPQ, QPQ
41	F630F6Y40HP	HEATER	1	HPE, YTE, KTE, PTE, ZPE
41	F630F6Y40MP	HEATER	1	YPQ, MPQ, QPQ
43	F611E6Y40HP	HEATER (DU)	1	HPE, YTE, KTE, PTE, ZPE
43	F611E6Y40MP	HEATER (DU)	1	YPQ, MPQ, QPQ
44	F61457J70XP	THERMAL CUTOUT	2	
45	F66266Y40XPG	THERMAL CUTOUT BRACKET	1	
48	F01506W50XP	NO TOUCHING LABEL	1	EXCPT HPE
48	F01508G60HP	NO TOUCHING LABEL	1	HPE
49	F22377J70XPG	LEFT HEATER PANEL	1	

Ref. No.	Part No.	Part Name & Description	Pcs/Set	Remarks
50	F22367J70XPG	RIGHT HEATER PANEL	1	
51	F300B7J70XP	LEFT HINGE (U)	1	
52	F300U7J70XP	RIGHT HINGE (U)	1	
53	F601L7J70XP	IR SENSOR (U)	1	
54	A6760-1E20	SWING MOTOR	1	
55	F44966Y40XP	NOZZLE A	1	
56	F45137J70XP	TIE-IN C	1	
57	F92017J70XP	COPPER PIPE	1	
58	F46507J70XP	TUBE C	1	
59	F92047J70XP	TUBE D	1	
60	F03346Y40HP	MENU LABEL	1	HPE, YPQ, YTE, MPQ
60	F03346Y40KT	MENU LABEL	1	KTE, PTE
60	F03346Y40ZP	MENU LABEL	1	ZPE
60	F03346Y40QP	MENU LABEL	1	QPQ
61	F90717J70XP	SUPPORTER	1	
62	XTWFA4+12T	SCREW	4	FOR MAGNETRON
63	XTWFA4+12D	SCREW	4	FOR CABINET BODY
65	F202Q6Y40BP	UPPER HEATER PANEL	1	
66	F15676Y40XP	DRIP PLATE	1	
67	F22776Y40XP	LOWER HEATER PANEL	1	
68	F10596Y40BP	BACK COVER	1	
69	F10586Y40BP	SIDE COVER	1	
70	F10576Y40XP	BACK COVER C	1	
71	F40306Y40BP	EXHAUST GUIDE D	1	
72	F41706Y40BP	HEATER MOUNTING PLATE	1	
74	F22394V00BP	CONVECTION FAN BLADE	1	
75	F41594V00BP	COOLING FAN BLADE	1	
79	F41806Y40BP	CONVECTION FAN BRACKET	1	
80	F490S6Y40XP	CONVECTION FAN MOTOR	1	
81	F631D6Y40XP	CONVECTION HEATER	1	HPE, YTE, KTE, PTE, ZPE
81	F631D6Y40BP	CONVECTION HEATER	1	YPQ, MPQ, QPQ
82	F64174V00BP	HEATER BRACKET A	1	
83	F66796Y40BP	CONVECTION INSIDE COVER A	1	
85	F607J6Y40BP	CONVECTION ASSEMBLY (BU)	1	(INCLUDING IN CONVECTION OUTSIDE COVER B & ADIABATIC MATERIAL)
86	F67356Y40XP	HEATER PROTECTOR	1	
87	F02395E20KN	CORD CAUTION LABEL	1	KTE, PTE
89	F40276Y40BP	INVERTER AIR GUIDE	1	
90	F50586Y40XP	BRACKET	1	
91	F50596Y40XP	COVER	1	
92	F60586Y40XP	CIRCUIT BREAKER	1	
93	F03586Y40XP	CIRCUIT BREAKER HARNESS	1	
94	F66286Y40BP	THERMAL CUTOFF BRACKET	1	
98	F15607J70ZP	ALUMINUM PLATE	1	QPQ, ZPE
100	F01576Y40HP	NAME PLATE	1	HPE
100	F01576Y40YP	NAME PLATE	1	YPQ
100	F01576Y40YT	NAME PLATE	1	YTE
100	F01576Y40MP	NAME PLATE	1	MPQ
100	F01576Y40KT	NAME PLATE	1	KTE
100	F01576Y40PT	NAME PLATE	1	PTE
100	F01576Y40ZP	NAME PLATE	1	ZPE
101	F00066W10MP	CAUTION LABEL	1	YPQ
101	F00068H00YT	CAUTION LABEL	1	YTE
102	F02846Y40YP	NO. LABEL	1	YPQ
103	F11656Y40KT	REINFORCE BRACKET E	1	

### 8.3. WATER TANK ASSEMBLY

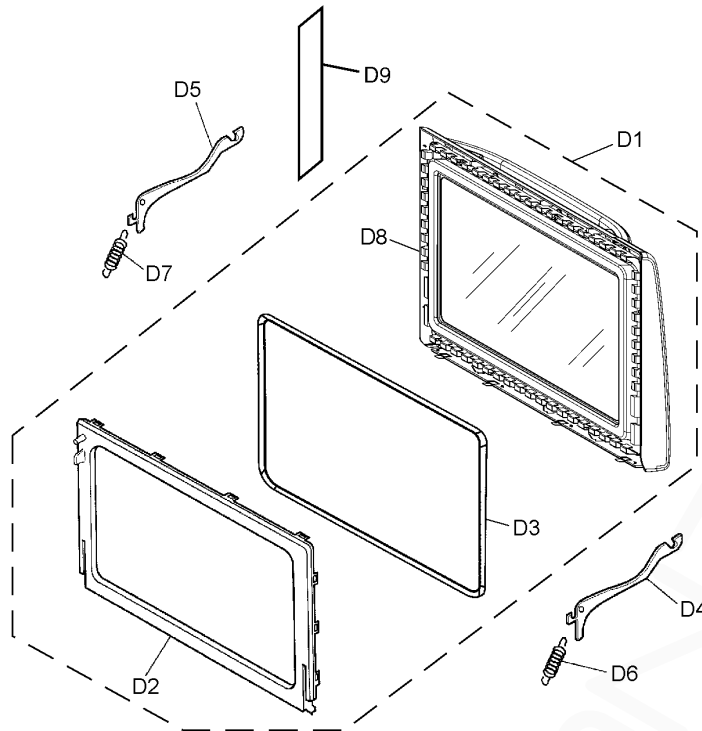


Ref. No.	Part No.	Part Name & Description	Pcs/Set	Remarks
T1	F060Q6Y40XP	WATER TANK (U)	1	(INCLUDING TANK COVER & SEAL)
T2	F061A6Y40XP	WATER TANK	1	
T3	F06116Y40XP	TANK COVER	1	
T4	F44247J70XP	SEAL	1	



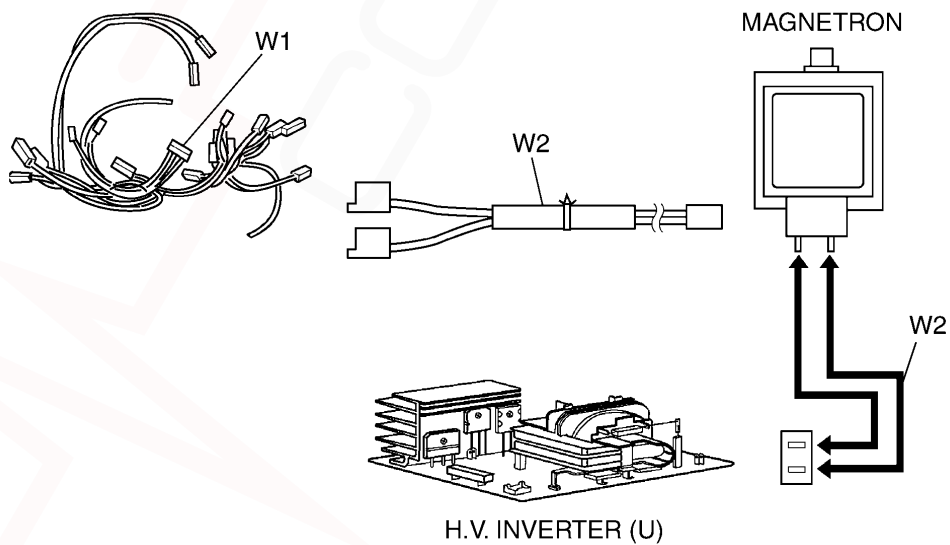


### 8.6. DOOR ASSEMBLY



Ref. No.		Part No.	Part Name & Description	Pcs/Set	Remarks
D1	⚠	F390L6Y40SXP	DOOR (U)	1	HPE, YPQ, YTE, MPQ, KTE, PTE (INCLUDING DOOR C & SEAL)
D1	⚠	F390L6Y40SEP	DOOR (U)	1	QPQ, ZPE (INCLUDING DOOR C & SEAL)
D2	⚠	F30856Y40XP	DOOR C	1	
D3		A3334-1K00	SEAL	1	
D4		F30546Y40BP	DOOR ARM (LEFT)	1	
D5		F30446Y40BP	DOOR ARM (RIGHT)	1	
D6		F32316Y40XP	DOOR KEY SPRING A	1	
D7		F32307J70XP	DOOR KEY SPRING B	1	
D8	⚠	F302A6Y40SXP	DOOR B (U)	1	HPE, YPQ, YTE, MPQ, KTE, PTE
D8	⚠	F302A6Y40SEP	DOOR B (U)	1	QPQ, ZPE
D9		F01726V00JP	CAUTION LABEL B	1	QPQ

### 8.7. WIRING MATERIALS



Ref. No.		Part No.	Part Name & Description	Pcs/Set	Remarks
W1		F030A6Y40XP	LEAD WIRE HARNESS	1	
W2		F030E7J70XP	H.V. LEAD WIRE	1	