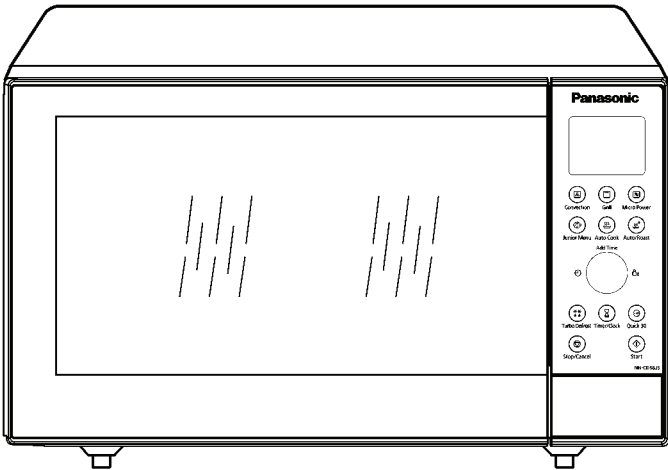


Service Manual

Microwave Oven

NN-CD58JS

QPQ (Australia & New Zealand)

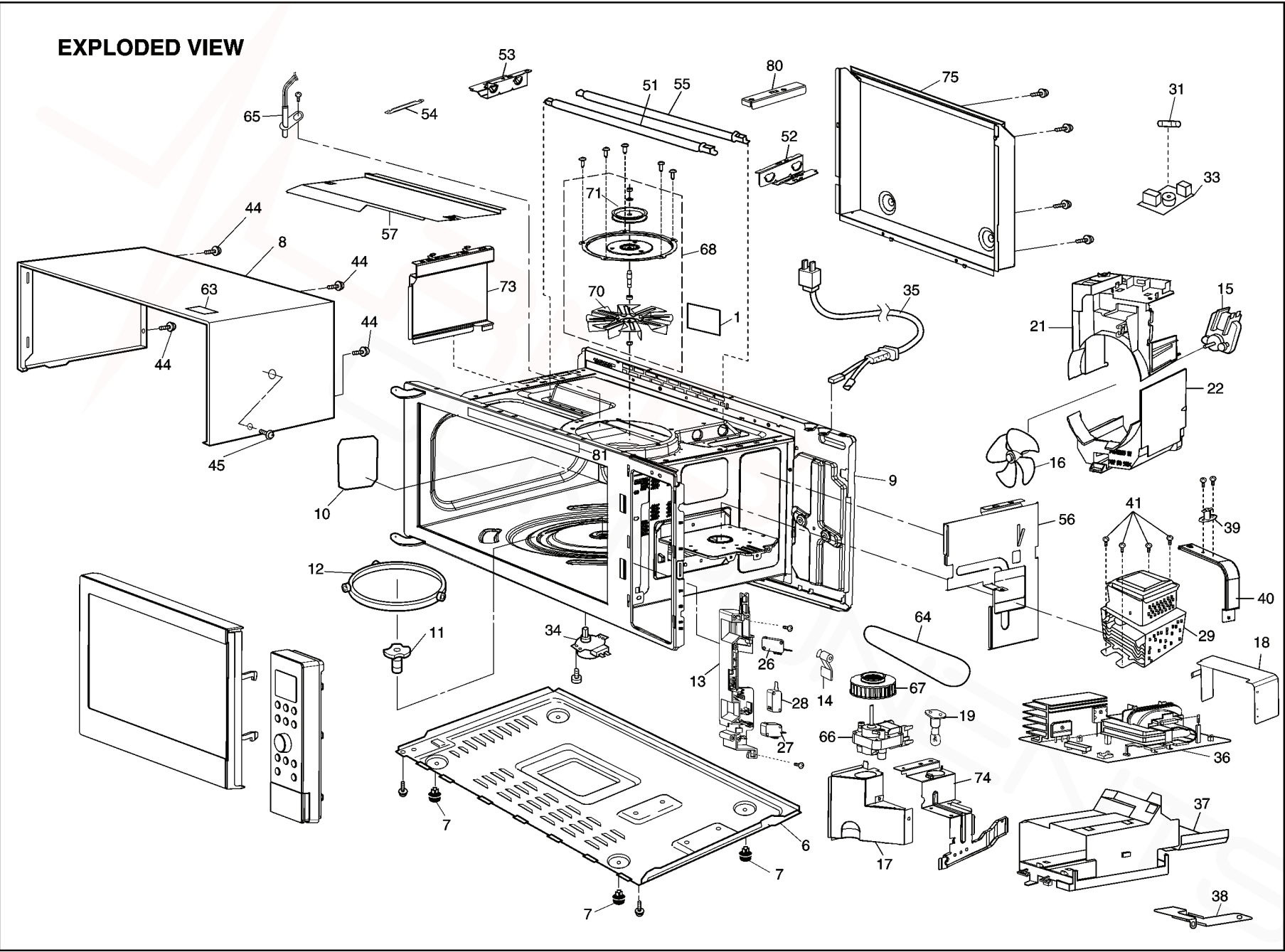


Specification

Models		NN-CD58JS
Power Source:		230~240V AC Single Phase, 50Hz
Power Consumption:	Microwave	1140W
	Heater	1380W
Output:	Microwave	1000W
	Heater	1300W
Microwave Frequency:		2450MHz
Timer:		30 min.00sec (HIGH/MAX Power Level) 99 min.50sec (Other Power Level)
Outside Dimensions:		520mm(W) x 395mm(D) x 310mm(H)
Oven Cavity Dimensions:		359mm(W) x 352mm(D) x 217mm(H)
Weight:		14.3kg
PbF		This product with PbF
Specifications subject to change without notice.		

8 EXPLODED VIEW AND PARTS LIST

8.1. EXPLODED VIEW



8.2. PARTS LIST

NOTE:

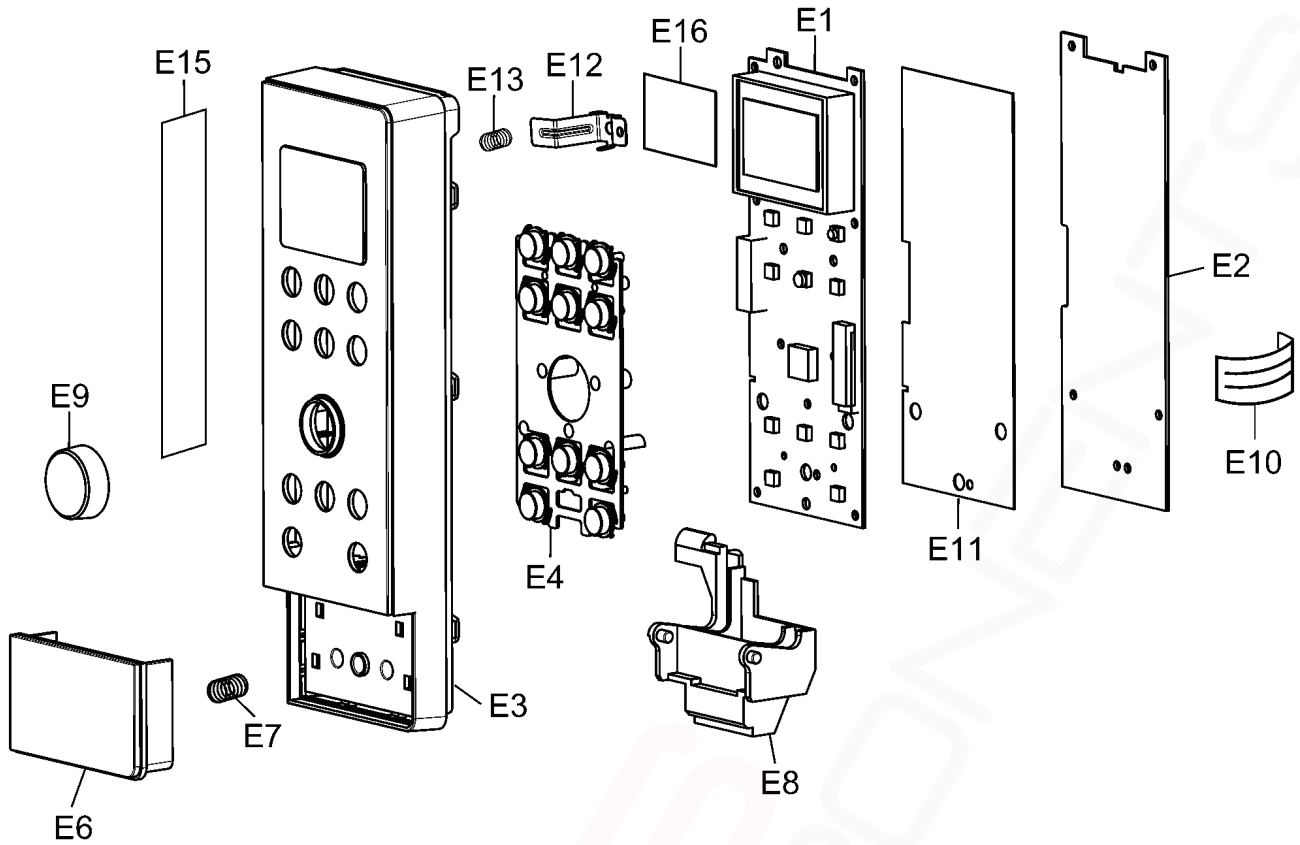
1. When ordering replacement part(s), please use part number(s) shown in this part list.
Do not use description of the part.
2. Important safety notice:
Components identified by \triangle mark have special characteristics important for safety.
When replacing any of these components, use only manufacture's specified parts.

Ref. No.		Part No.	Part Name & Description	Pcs/Set	Remarks
1		F00066V00HP	CAUTION LABEL	1	
6		F10017X50BP	BASE	1	
7		F10084T00APS	RUBBER FOOT	4	
8		F1009BG70SBP	CABINET BODY	1	
9	\triangle	F200ABG60BP	OVEN	1	
10		F20556W50XP	COVER	1	
11		F21317X50BP	PULLY SHAFT	1	
12		F290D6W50XP	ROLLER RING (U)	1	
13	\triangle	F3020BS10BP	DOOR HOOK	1	
14		F31365Q00AP	HOOK LEVER A	1	
15		F400A5U00XN	FAN MOTOR	1	
16		F40085G10XN	FAN BLADE	1	
17		F40257X50BP	AIR GUIDE A	1	
18		F40425Q00APG	AIR GUIDE F	1	
19		F612E9V00XP	INCANDESCENT LAMP (U)	1	
21		F41445Q00AP	UPPER ORIFICE	1	
22		F41467X50BP	LOWER ORIFICE	1	
26	\triangle	F61425U30XN	MICRO SWITCH	1	(PRIMARY LATCH SWITCH)
27	\triangle	F61415U30XN	MICRO SWITCH	1	(SECONDARY LATCH SWITCH)
28	\triangle	F61785U30XN	MICRO SWITCH	1	(SHORT SWITCH)
29	\triangle	2M261-M32U1W6	MAGNETRON	1	
31	\triangle	F62309W40HP	FUSE	1	(15A)
33		F607XBS30SP	NOISE FILTER (U)	1	
34		F6326BS20BP	TURNTABLE MOTOR	1	
35	\triangle	F900C5G10QP	AC CORD W/PLUG	1	
36		F606YBH20GP	H.V.INVERTER (U)	1	
37		F65857X50BP	INVERTER BRACKET	1	
38		F66626H60AP	GROUNDING PLATE	1	
39		F61457X50BP	THERMAL CUTOUT	1	
40		F66267X50BP	THERMAL CUTOUT BRACKET	1	
41		XTWFL4+12T	SCREW	4	(FOR MAGNETRON)
44		XTWFA4+12D	SCREW	4	(FOR CABINET BODY)
45		XTCAFL4+12AFM	SCREW	1	(FOR CABINET BODY SIDE)
51		F630GBG60BP	HEATER (AU)	1	400W
52		F64607X50BP	HEATER MOUNTING PLATE	1	
53		F64607X60BP	HEATER MOUNTING PLATE	1	
54		F64217X50BP	HEATER LINK	1	
55		F630GBG70BP	HEATER (AU)	1	900W
56		F22367X50BP	RIGHT HAND HEATER PANEL	1	
57		F22177X50BP	INSULATION PLATE	1	
63		F01508G60HP	NO TOUCHING LABEL	1	
64		A40606660QP	PULLEY BELT	1	
65		A605A7X50BP	THERMISTOR U	1	OVEN THERMISTOR
66		F490SBS20BP	CONVECTION FAN MOTOR	1	
67		F4008BG60BP	PULLEY B	1	
68		F402LBG60BP	FAN CASE UNIT	1	
70		F22397X50BP	CONVECTION FAN	1	
71		F41327X50BP	PULLEY A	1	
73		F4145BG60BP	LEFT AIR GUIDE	1	
74		F41807X50BP	MOTOR BRACKET	1	

Ref. No.	Part No.	Part Name & Description	Pcs/Set	Remarks
75	F1058BG60BP	REAR COVER	1	
80	F64619X10BP	HEATER FIXING PLATE	1	
81	F0334BG60QP	MENU LABEL	1	

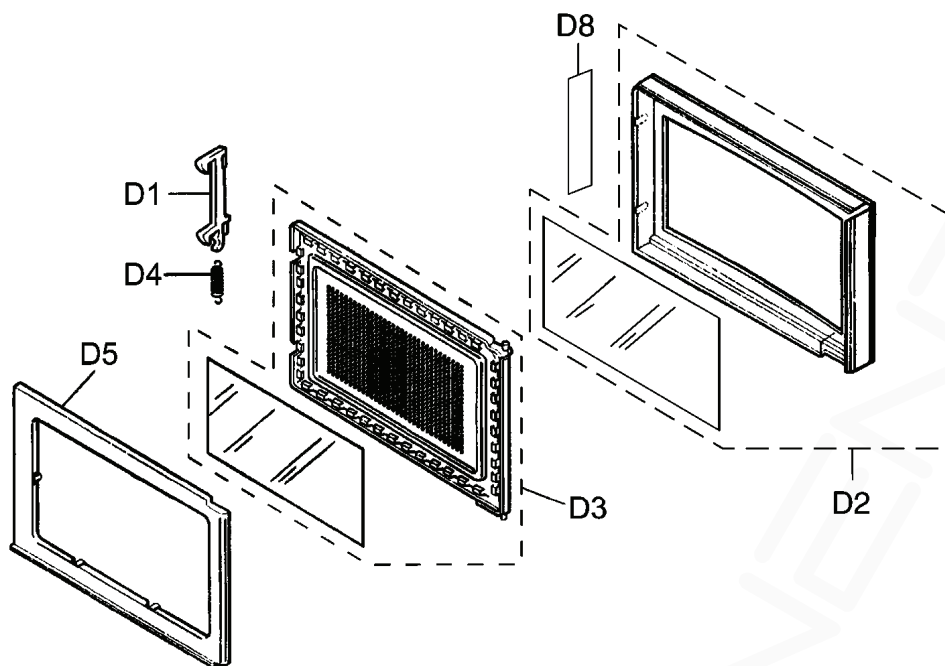
ALL RIGHTS RESERVED

8.3. ESCUTCHEON BASE ASSEMBLY



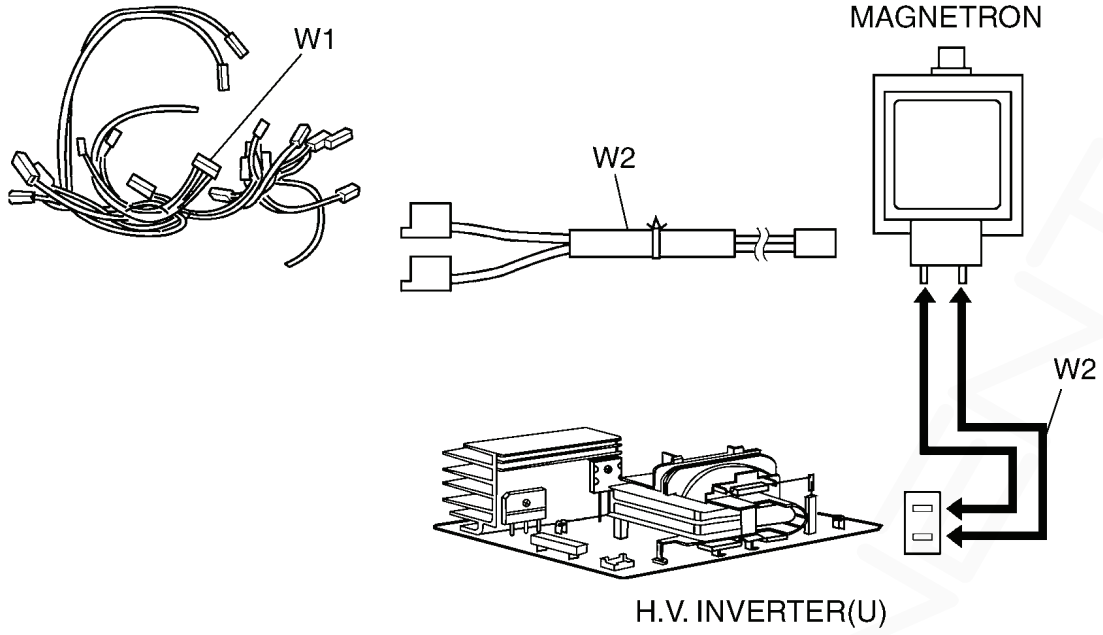
Ref. No.	Part No.	Part Name & Description	Pcs/Set	Remarks
E1	F603LBG60QP	D.P.CIRCUIT (AU)	1	
E2	F603YBG60BP	D.P.CIRCUIT (DU)	1	
E3	F800LBG60SQP	ESCUTCHEON BASE (U)	1	
E4	F8298BG60SBP	BUTTON	1	
E5				
E6	F891PBG60SBP	DOOR OPENING BUTTON (U)	1	
E7	F80375K00AP	COOK BUTTON SPRING	1	
E8	F82567X50BP	DOOR OPENING LEVER	1	
E9	F8039BG60SBP	DIAL	1	
E10	F66167D00AP	FLAT CABLE	1	
E11	F6070BG60BP	INSULATION SHEET	1	
E12	F66017X50BP	GROUND PANEL	1	
E13	F80877X50BP	GROUND SPRING	1	
E14	F0007BG60SQP	NAME PLATE	1	
E15				
E16	F8356BG60BP	SHEET	1	

8.4. DOOR ASSEMBLY



Ref. No.		Part No.	Part Name & Description	Pcs/Set	Remarks
D1		F30185Q00AP	DOOR KEY A	1	
D2	△	F302ABG60SBP	DOOR A (U)	1	
D3	△	F301P5R00XP	DOOR E (U)	1	
D4		F30215G10XN	DOOR KEY SPRING	1	
D5	△	F3085BS10BP	DOOR C	1	
D8		F0172BN50QP	CAUTION LABEL B	1	

8.5. WIRING MATERIALS



Ref. No.	Part No.	Part Name & Description	Pcs/Set	Remarks
W1	F030ABS10BP	LEAD WIRE HARNESS	1	
W2	F030E6W50XP	H.V. LEAD WIRE	1	
W3	F030FBS30EP	LEAD WIRE HARNESS U	1	(INCLUDING MAGNETRON THERMISTOR)