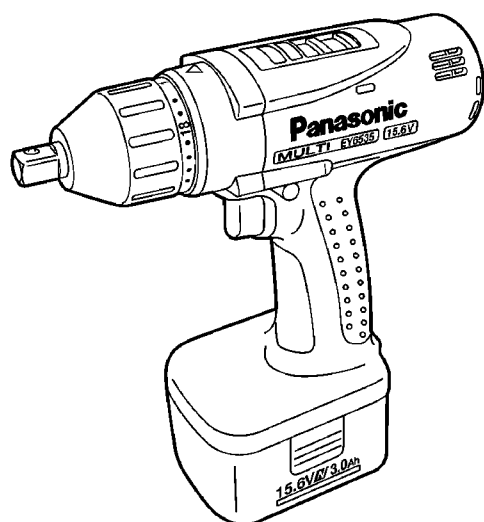


# Service Manual

Cordless Multi Drill &amp; Driver

EY6535-X8



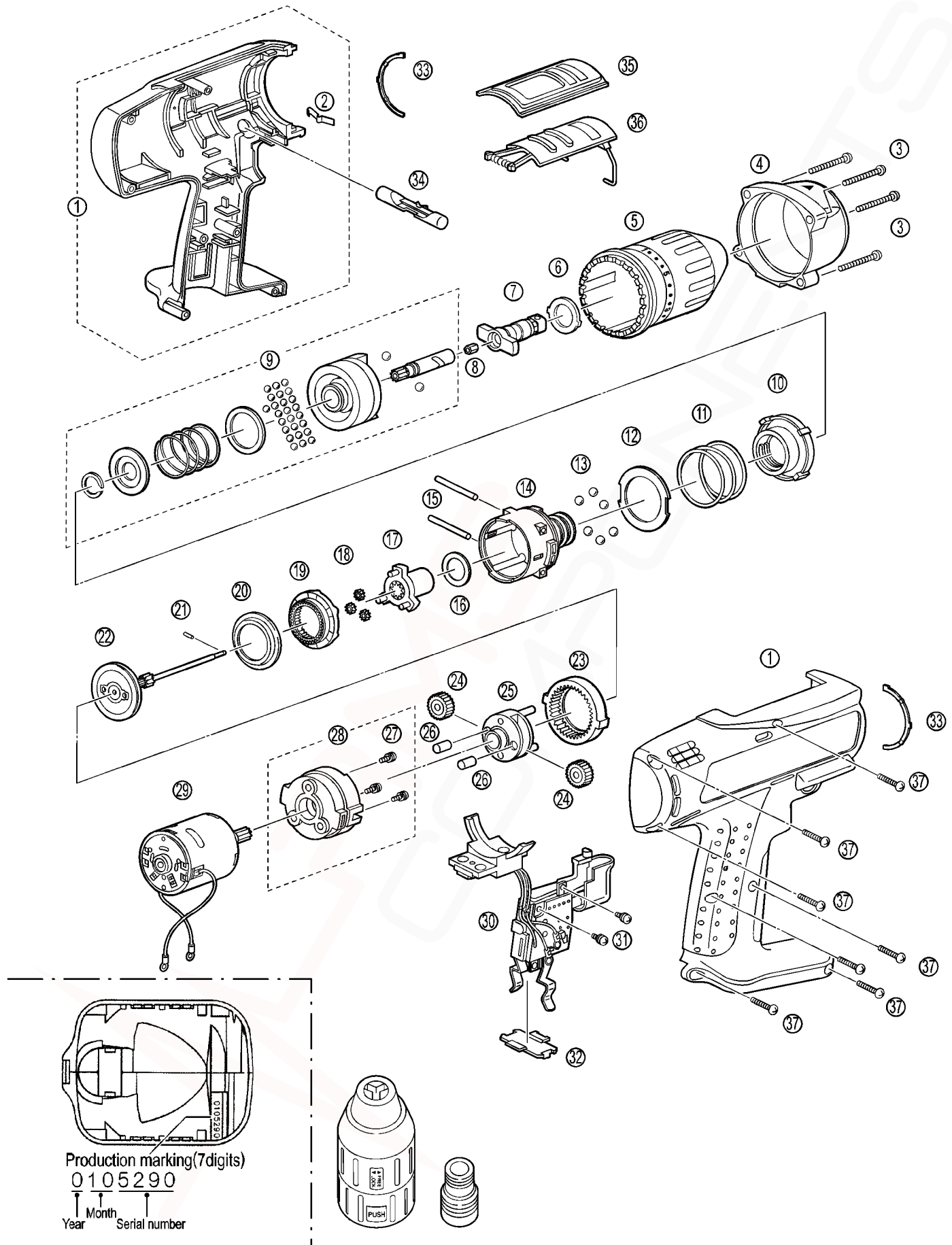
## SPECIFICATIONS

			Drill drive mode	Impact mode (Caution: Do not use keyless drill chuck for impact mode.)	
Maximum recommended capacities	Drilling	Wood drilling	φ 27mm (1-1/16")	Not feasible	
		Metal drilling	φ 13mm (1/2")		
	Screw driving	Machine screw	M5	Not feasible	
		Wood screw	φ 6.8mm (17/64")		
		Tech screw	φ 6.0mm (15/64")		
		Coach screw (Lag bolt)	φ 10.0mm (3/8")		
	Bolt fastening		Not feasible	Standard bolt: M12 High tensile bolt: M10	
No load speed			0 ~ 650/min (rpm)	0 ~ 2,200/min (rpm)	
Clutch torque			Approx. 1.0Nm (10kgf-cm, 8.7in-lbs.) – 5.4Nm (55kgf-cm, 47.7in-lbs.)	-	
Impact per minute			-	0 ~ 3,300/min (ipm)	
Motor			DC Motor 15.6V		
Square drive			12.7mm (1/2") square drive with pin detent		
Chuck capacity (used by model EY9X003E)			φ 1.6 ~ 13mm (1/16"~ 1/2")	-	
Overall length			216mm (8-1/2")		
Weight (with battery pack)			2.2ka (4.8lbs.)		

# Panasonic

© 2001 Matsushita Electric Works Ltd. All rights reserved. Unauthorized copying and distribution is a violation of law.

## 6 EXPLODED VIEW



## 7 REPLACEMENT PARTS LIST

### NOTE:

\*B=only available as set

\*C=available individually

Ref.No.	Part No.	Part Name & Description	Remarks			Per Unit
1	WEY6535K3079	HOUSING AB SET			▲	1
1	WEY6535K3080	HOUSING AB SET		only for Oceania	▲	1
2	WEY6481L0177	CLICK SPRING			▲	1
3	WEY6535K9158	GIZA TIGHT SCREW (4×25)	*C		▲	4
4	WEY6535S0648	FIXATION COVER			▲	1
5	WEY6535K3748	CLUTCH HANDLE			▲	1
6	WEY6535L0868	SLIDER			▲	1
7	WEY6535L1128	POWER SHAFT			▲	1
8	WEY6535L0888	CONNECT PIECE			▲	1
9	WEY6535L1418	DRIVING SHAFT ASSEMBLY			▲	1
10	WEY6535L0638	ADJUSTING SCREW			▲	1
11	WEY6535L0168	CLUTCH SPRING			▲	1
12	WEY6535L0578	CLUTCH PLATE			▲	1
13	WEY6535L6968	STEEL BALL	*B	φ 5, (6PCS/PACK)	▲	6
14	WEY6535L1068	GEAR CASE			▲	1
15	WEY6481L0357	THRUST PIN	*B	2.5×33.6, (2PCS/PACK)		2
16	WEY6535L0928	THRUST PLATE 55			▲	1
17	WEY6535L1648	CARRIER			▲	1
18	WEY6505L1347	PLANET GEAR	*B	(3PCS/PACK)	▲	3
19	WEY6535L1358	CLUTCH GEAR			▲	1
20	WEY6535L0908	THRUST PLATE 71			▲	1
21	WEY6535L0918	PIN ( φ 1×5.5)			▲	1
22	WEY6535L1368	DRIVING CARRIER			▲	1
23	WEY6505L1457	RING GEAR			▲	1
24	WEY6505L1377	PLANET GEAR A	*B	(2PCS/PACK)		2
25	WEY6535L1388	REVOLVING STAND				1
26	WEY6505L0367	PIN ( φ 5×9.4)	*C			2
27	WEY6505L9007	SCREW (K3×6)	*B	(3PCS/PACK)	▲	3
28	WEY6535L0028	MOTOR MOUNTING BASE			▲	1
29	WEY6535L1008	DC MOTOR			▲	1
30	WEY6535Y2008	SWITCH			▲	1
31	WEY6230L6037	SEMS SCREW	*C	M3×5		2
32	WEY6230L0207	DUST PREVENTIVE PLATE				1
33	WEY6535L0188	CLICK SPRING	*B	(2PCS/PACK)	▲	2
34	WEY6402Y3247	SELECTOR HANDLE			▲	1
35	WEY6535X3248	D/I INDICATION COVER			▲	1
36	WEY6535K3238	D/I CHANGE HANDLE			▲	1
37	WEY6930K9218	GIZA TIGHT SCREW (3×20)	*C		▲	7
-	WEY6535K8109	OPERATING INSTRUCTIONS			▲	1

\*\*Battery Pack, Keyless Chuck, Quick Change Chuck and Tool Case are available as an optional accessory. See the nearest sales dealer for details.

\*\*\*For replacement parts of charger, see the charger service manual.

Charger complete set is available as an optional accessory. See the nearest sales dealer for details.