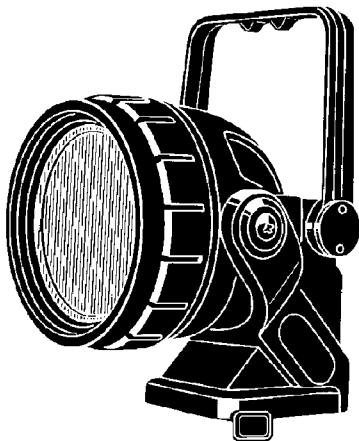


# Service Manual

Lantern

EY3793



## SPECIFICATIONS

Bulb	: Xenon bulb (7.2V, 0.75A)	Weight	: 0.42kg (0.43lb)
Brightness	: Approx. 5000lux	(excluding battery pack)	
Dimensions	: 155(D) X max. 203(H) X 143(W)mm		
(excluding battery pack)	(6-7/64"(D)×max.7-63/64"(H)×5-1/16"(W))		

### WARNING

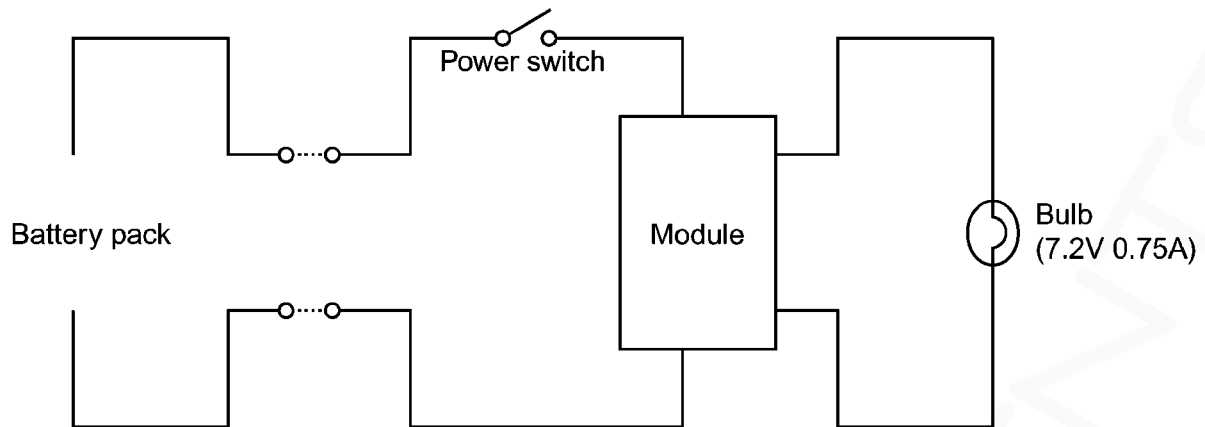
This service information is designed for experienced repair technicians only and is not designed for use by the general public. It does not contain warnings or cautions to advise non-technical individuals of potential dangers in attempting to service a product. Products powered by electricity should be serviced or repaired only by experienced professional technicians. Any attempt to service or repair the product or products dealt with in this service information by anyone else could result in serious injury or death.

## CONTENTS

	Page		Page
1 SCHEMATIC DIAGRAM .....	2	2 EXPLODED VIEW & REPLACEMENT PARTS LIST .....	3



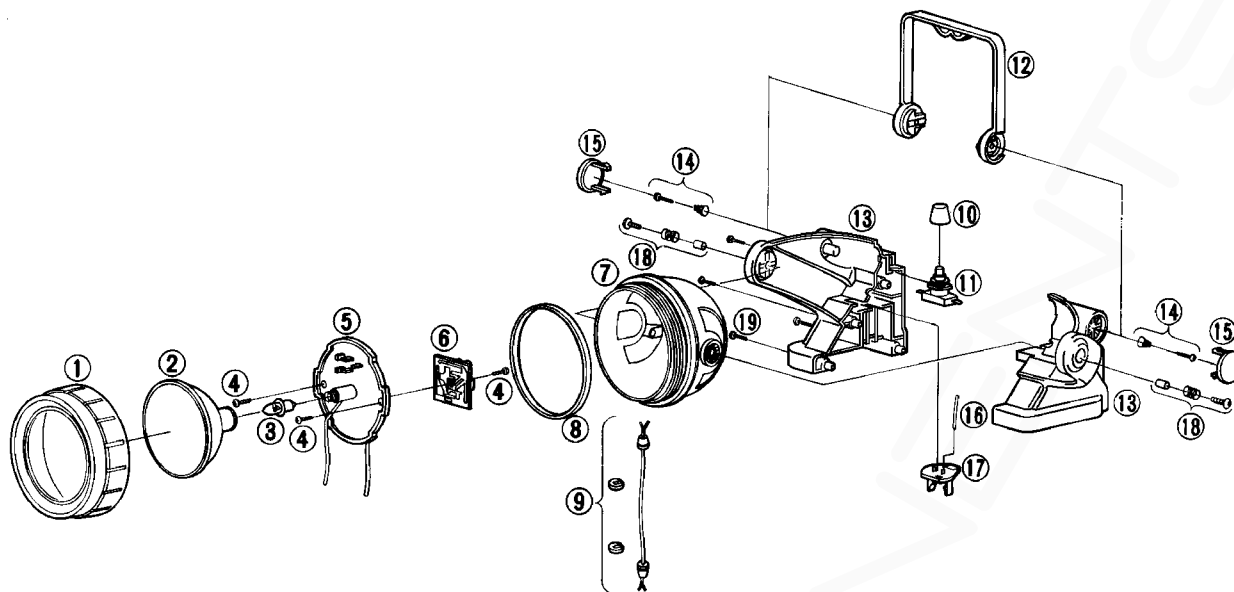
# 1 SCHEMATIC DIAGRAM





## 2 EXPLODED VIEW & REPLACEMENT PARTS LIST

### 2.1. EXPLODED VIEW



### 2.2. REPLACEMENT PARTS LIST

**NOTE:**

\*A = available as an optional accessory

\*B = only available as set

\*C = available individually

Ref. No.	Part No.	Part Name & Description	Remarks			Per Unit
1	WEY3790K0547	SHADE				1
2	WEY3790S3757	REFLECTOR				1
3	WEYMB-72P75X	BULB	*B	7.2V 0.75A		2
4	WEY6261B9057	TAPPING SCREW (K3-10)	*C			3
5	WEY3790L2587	LAMP HOLDER BASE				1
6	WEY3793L2108	MODULE				1
7	WEY3790K3057	LAMP CASE				1
8	WEY3790K0797	O-RING				1
9	WEY3790L2897	JUNCTION CORD				1
10	WEY3790K3257	SWITCH CAP				1
11	WEY3790L2007	POWER SWITCH				1
12	WEY3790K3247	HANDLE				1
13	WEY3793K3078	HOUSING AB SET				1
14	WEY3790L0167	SPRING/SCREW SET	*B			2
15	WEY3790K3447	SCREW CAP	*B			2
16	WEY3790L2967	LEAD WIRE (RED)				1
17	WEY3790L2157	TERMINAL PLATE				1
18	WEY3790K0177	SPRING/COLLAR/SCREW SET	*B			2
19	WEY3790K9037	TAPPING SCREW (K3-20)	*C			4
-	WEY3793K8009	INDIVIDUAL BOX				1
-	WEY3793K8108	INSTRUCTION MANUAL				1