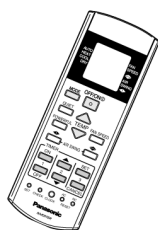
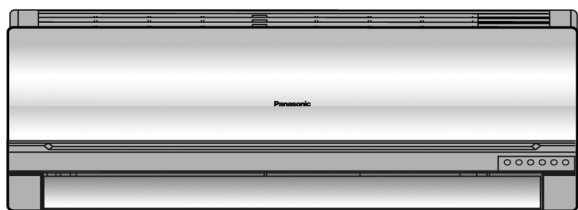


Service Manual

Air Conditioner

CS-W12EKR CU-W12EKR



⚠ WARNING

This service information is designed for experienced repair technicians only and is not designed for use by the general public. It does not contain warnings or cautions to advise non-technical individuals of potential dangers in attempting to service a product. Products powered by electricity should be serviced or repaired only by experienced professional technicians. Any attempt to service or repair the product or products dealt with in this service information by anyone else could result in serious injury or death.

TABLE OF CONTENTS

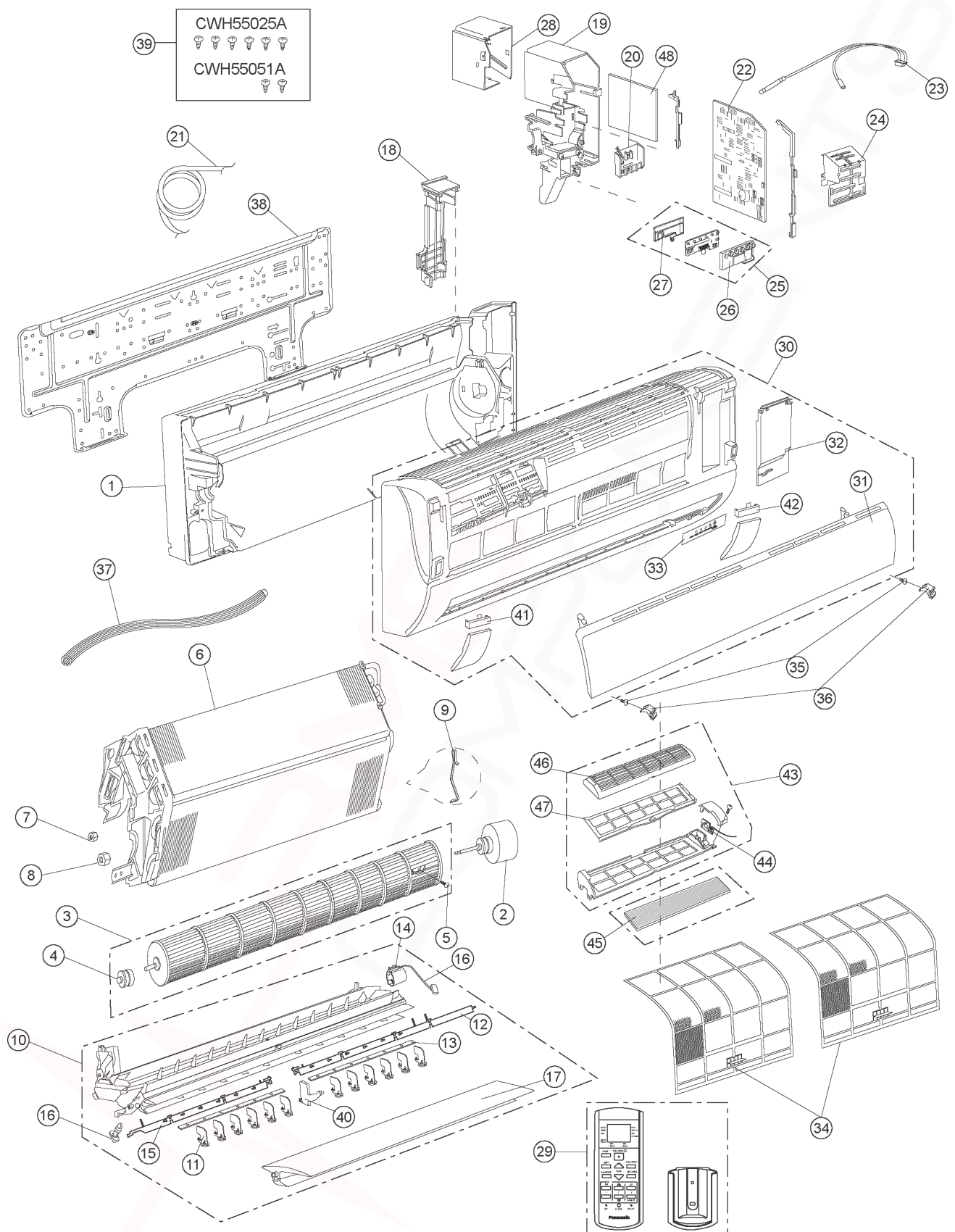
	PAGE		PAGE
1 Safety Precaution	3	10 Operation and Control	22
2 Specifications	5	10.1. Heating Operation	22
2.1. CS-W12EKR CU-W12EKR	5	10.2. Cooling Operation	23
3 Location of Controls and Components	7	10.3. Soft Dry Operation	24
3.1. Product Overview	7	10.4. Automatic Operation	25
4 Dimensions	8	10.5. Operation Control	26
4.1. Indoor Unit	8	10.6. Indoor Fan Speed Control	31
4.2. Outdoor Unit	9	10.7. Outdoor Fan Speed Control	33
5 Refrigeration Cycle Diagram	10	10.8. Vertical Airflow Direction Control	34
6 Block Diagram	11	10.9. Horizontal Airflow Direction Control	34
7 Wiring Connection Diagram	12	10.10. Powerful Operation	35
7.1. Indoor Unit	12	10.11. Quiet Operation	36
7.2. Outdoor Unit	13	10.12. Timer Control	38
8 Printed Circuit Board	14	10.13. Random Auto Restart Control	38
8.1. Indoor Unit (Main Printed Circuit Board)	14	10.14. Remote Control Signal Receiving Sound	38
8.2. Indicator panel	15	11 Servicing Mode	39
9 Installation Instruction	16	11.1. Auto Switch Operation	39
9.1. Indoor Unit	17	11.2. Indicator Panel	39
9.2. Outdoor Unit	19	12 Troubleshooting Guide	40

Panasonic®

© 2006 Panasonic HA Air-Conditioning (M) Sdn Bhd (11969-T). All rights reserved. Unauthorized copying and distribution is a violation of law.

15 Exploded View and Replacement Parts List

15.1. Indoor Unit



Note

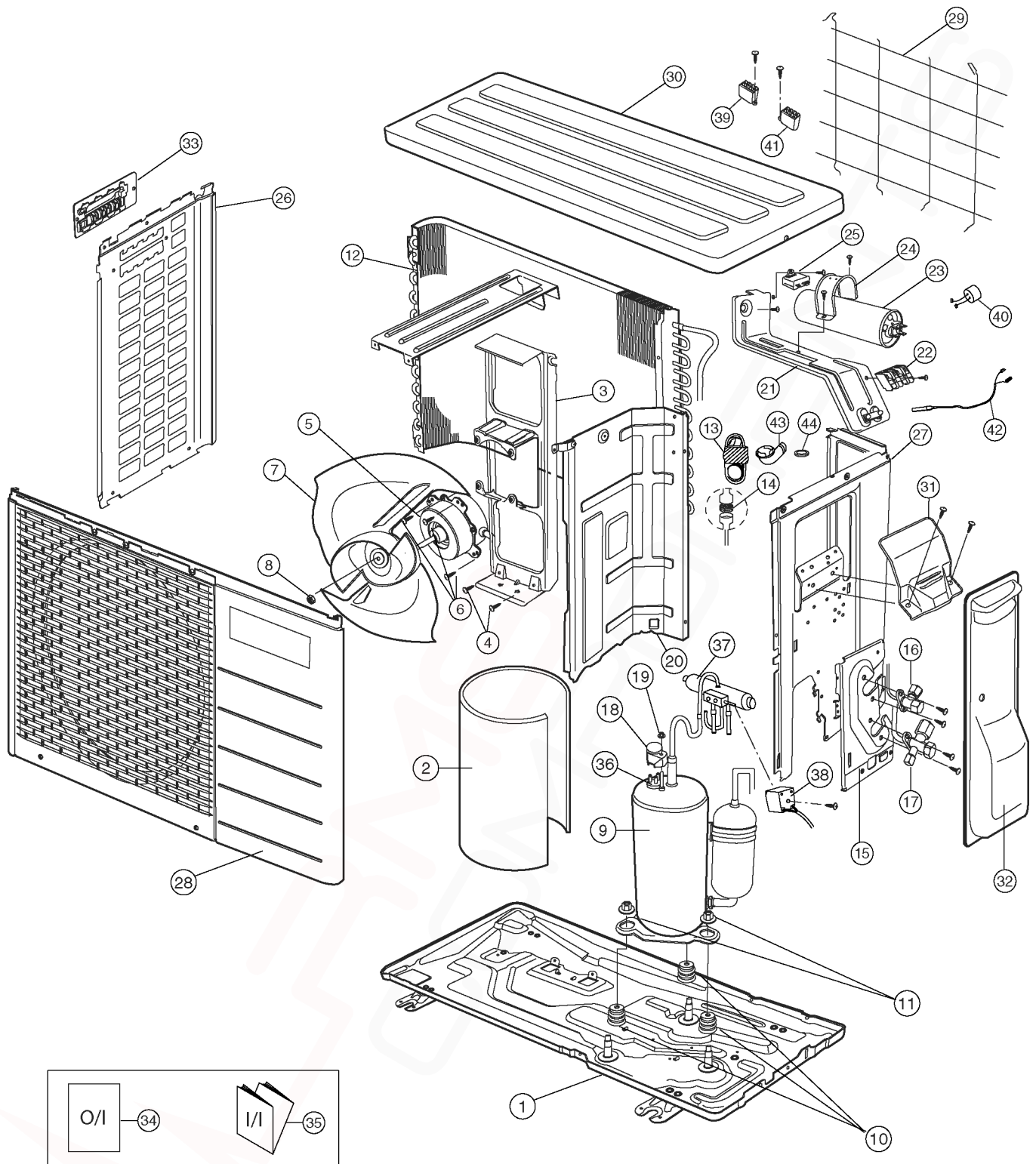
The above exploded view is for the purpose of parts disassembly and replacement.
The non-numbered parts are not kept as standard service parts.

REF. NO.	PART NAME & DESCRIPTION	QTY.	CS-W12EKR
1	CHASSY COMPLETE	1	CWD50C1492
2	FAN MOTORDC 30W 3PH	1	CWA981149J
3	CROSS FLOW FAN COMPLETE	1	CWH02C1045
4	BEARING ASSY	1	CWH64K007
5	SCREW - CROSS FLOW FAN	1	CWH551146
6	EVAPORATOR	1	CWB30C1583
7	FLARE NUT (1/4)	1	CWT251030
8	FLARE NUT (1/2)	1	CWT251032
9	HOLDER SENSOR	1	CWH32143
10	DISCHARGE GRILLE COMPLETE	1	CWE20C2517
11	VERTICAL VANE	12	CWE241157
12	CONNECTING BAR	1	CWE261092
13	CONNECTING BAR	2	CWE261071
14	A.S.MOTORDC SINGLE 12V 300OHM	1	CWA981091
15	CONNECTING BAR	1	CWE261091
16	CAP - DRAIN TRAY	1	CWH521096
17	HORIZONTAL VANE	1	CWE24C1142
18	BACK COVER CHASSIS	1	CWD932454
19	CONTROL BOARD CASING	1	CWH102289
20	TERMINAL BOARD COMPLETE	1	CWA28C2163
21	POWER SUPPLY CORD	1	CWA20C2479
22	ELECTRONIC CONTROLLER - MAIN	1	CWA73C2452
23	SENSOR COMPLETE	1	CWA50C2122
24	CONTROL BOARD FRONT COVER	1	CWH13C1120
25	INDICATOR COMPLETE	1	CWE39C1171
26	INDICATOR HOLDER	1	CWD932609
27	INDICATOR HOLDER	1	CWD932610
28	CONTROL BOARD TOP COVER	1	CWH131207
29	REMOTE CONTROL COMPLETE	1	CWA75C2819
30	FRONT GRILLE COMPLETE	1	CWE11C3646
31	INTAKE GRILLE	1	CWE22C1237
32	GRILLE DOOR	1	CWE141073
33	CONTROL PANEL	1	CWE312715
34	AIR FILTER	2	CWD001144
35	SCREW - FRONT GRILLE	2	XTT4+16CFJ
36	CAP - FRONT GRILLE	2	CWH521109
37	DRAIN HOSE	1	CWH851063
38	INSTALLATION PLATE	1	CWH361067
39	BAG COMPLETE - INSTALLATION SCREW	1	CWH82C067
40	FULCRUM	1	CWH621049
41	DECORATION BASE	1	CWE351141
42	DECORATION BASE	1	CWE351142
43	SUPERSONIC AIR PURIFYING DEVICE	1	CWH91C1022
44	ELECTRONIC CONTROLLER SUPERSONIC	1	CWA744688
45	SUPER ALLERU BUSTER FILTER	1	CWD00C1133
46	FRAME FR AIR FILTER SUPERSONIC	1	CWD011026
47	FRAME FR AIR FILTER SUPERSONIC	1	CWD011027
48	ELECTRONIC CONTROLLER - POWER	1	CWA744648

(NOTE)

- All parts are supplied from PHAAM, Malaysia (Vendor Code: 061).
- "O" marked parts are recommended to be kept in stock.

15.2. Outdoor Unit



Note

The above exploded view is for the purpose of parts disassembly and replacement.
The non-numbered parts are not kept as standard service parts.

REF. NO.	PART NAME & DESCRIPTION	QTY.	CU-W12EKR
1	CHASSY ASSY	1	CWD50K2073
2	SOUND PROOF MATERIAL	1	CWG302088
3	FAN MOTOR BRACKET	1	CWD541030
4	SCREW - FAN MOTOR BRACKET	2	CWH551197
5	FAN MOTORAC 30W SINGLE	1	CWA951121J
6	SCREW - FAN MOTOR MOUNT	3	CWH55406J
7	PROPELLER FAN ASSY	1	CWH03K1006
8	NUT - PROPELLER FAN	1	CWH56053J
9	COMPRESSOR	1	5PS132DBA21
10	ANTI - VIBRATION BUSHING	3	CWH50077
11	NUT - COMPRESSOR MOUNT	3	CWH56000J
12	CONDENSER	1	CWB32C1108
13	TUBE ASSY (CAPILLARYCHK VALVE)	1	CWT01C3363
14	STRAINER	1	CWB11025
15	HOLDER COUPLING	1	CWH351023
16	2-WAY VALVE (LIQUID)	1	CWB021283
17	3-WAY VALVE (GAS)	1	CWB011351
18	TERMINAL COVER	1	CWH171011
19	NUT - TERMINAL COVER	1	CWH7080300J
20	SOUND PROOF BOARD	1	CWH151023
21	CONTROL BOARD CASING	1	CWH102102
22	TERMINAL BOARD ASSY	1	CWA28C2170
23	CAPACITOR - COMP. (25µF 370V)	1	DS371256CPNA
24	HOLDER CAPACITOR	1	CWH30057
25	CAPACITOR - F.M (2.0µF 440V)	1	DS441205NPQA
26	CABINET SIDE PLATE (L)	1	CWE041031A
27	CABINET SIDE PLATE (R)	1	CWE041037A
28	CABINET FRONT PLATE	1	CWE06K1034
29	WIRE NET	1	CWD04C1009
30	CABINET TOP PLATE	1	CWE031014A
31	PLATE - C. B. COVER	1	CWH131088
32	CONTROL BOARD COVER	1	CWH13C1065
33	HANDLE	1	CWE161010
34	OPERATION INSTRUCTIONS	1	CWF565374
35	INSTALLATION INSTRUCTIONS	1	CWF613028
36	OVERLOAD PROTECTOR	1	CWA121214J
37	4-WAY VALVE	1	CWB001011J
38	V-COIL COMPLETE	1	CWA43C2069
39	ELECTRO MAGNETIC SWITCH	1	CWA00059
40	ELECTROLYTIC CAPACITOR	1	CWA32C067
41	ELECTRO MAGNETIC SWITCH	1	K6A2C7A00002
42	TEMPERATURE RELAY	1	CWA14C1009
43	L.TUBE	1	CWH5850080
44	PACKING - L.TUBE	1	CWB81012

(NOTE)

- All parts are supplied from PHAAM, Malaysia (Vendor Code: 061).
- "O" marked parts are recommended to be kept in stock.