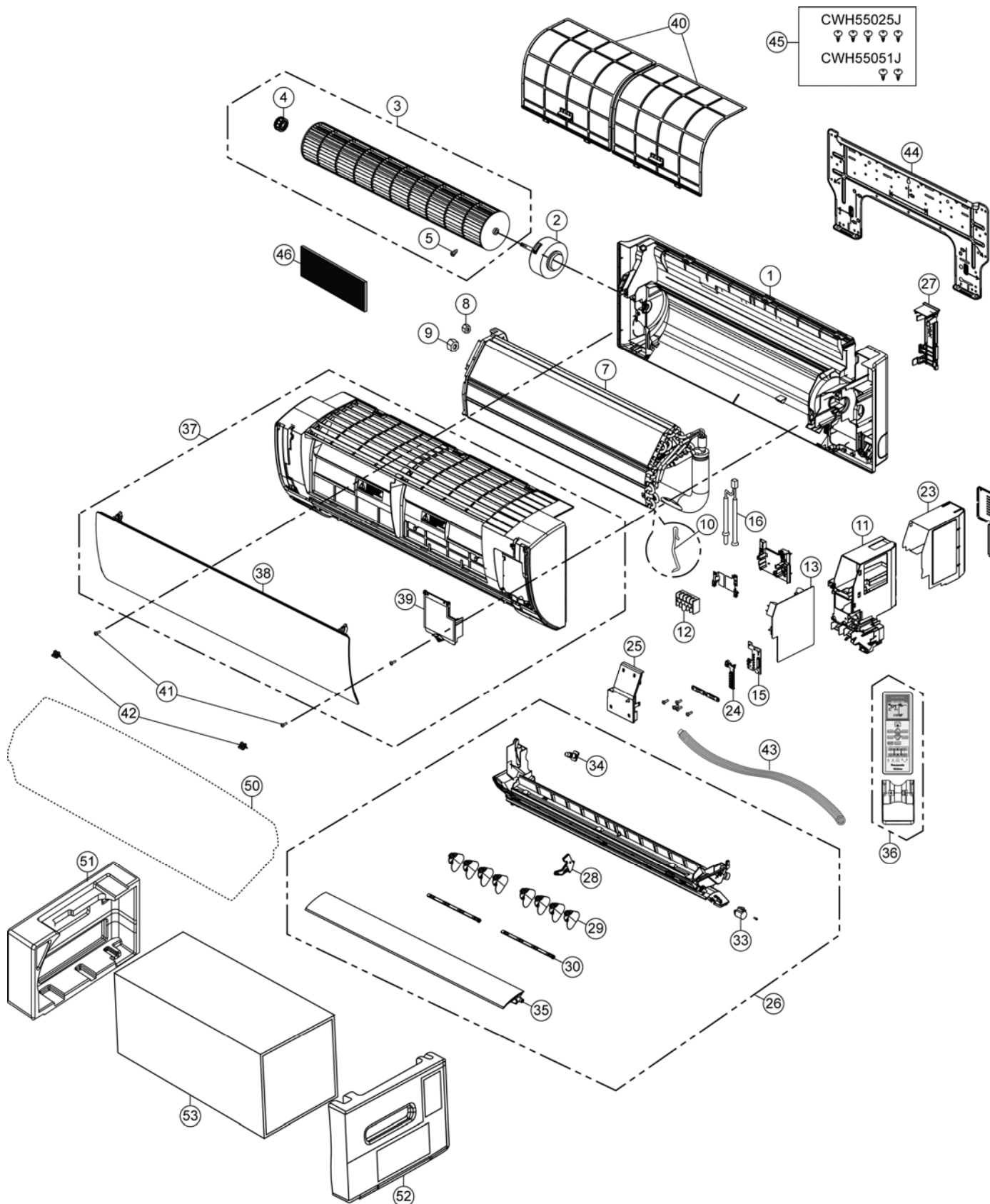


17. Exploded View and Replacement Parts List

17.1 Indoor Unit

17.1.1 CS-S9NKR CS-S12NKR



Note

The above exploded view is for the purpose of parts disassembly and replacement.
The non-numbered parts are not kept as standard service parts.

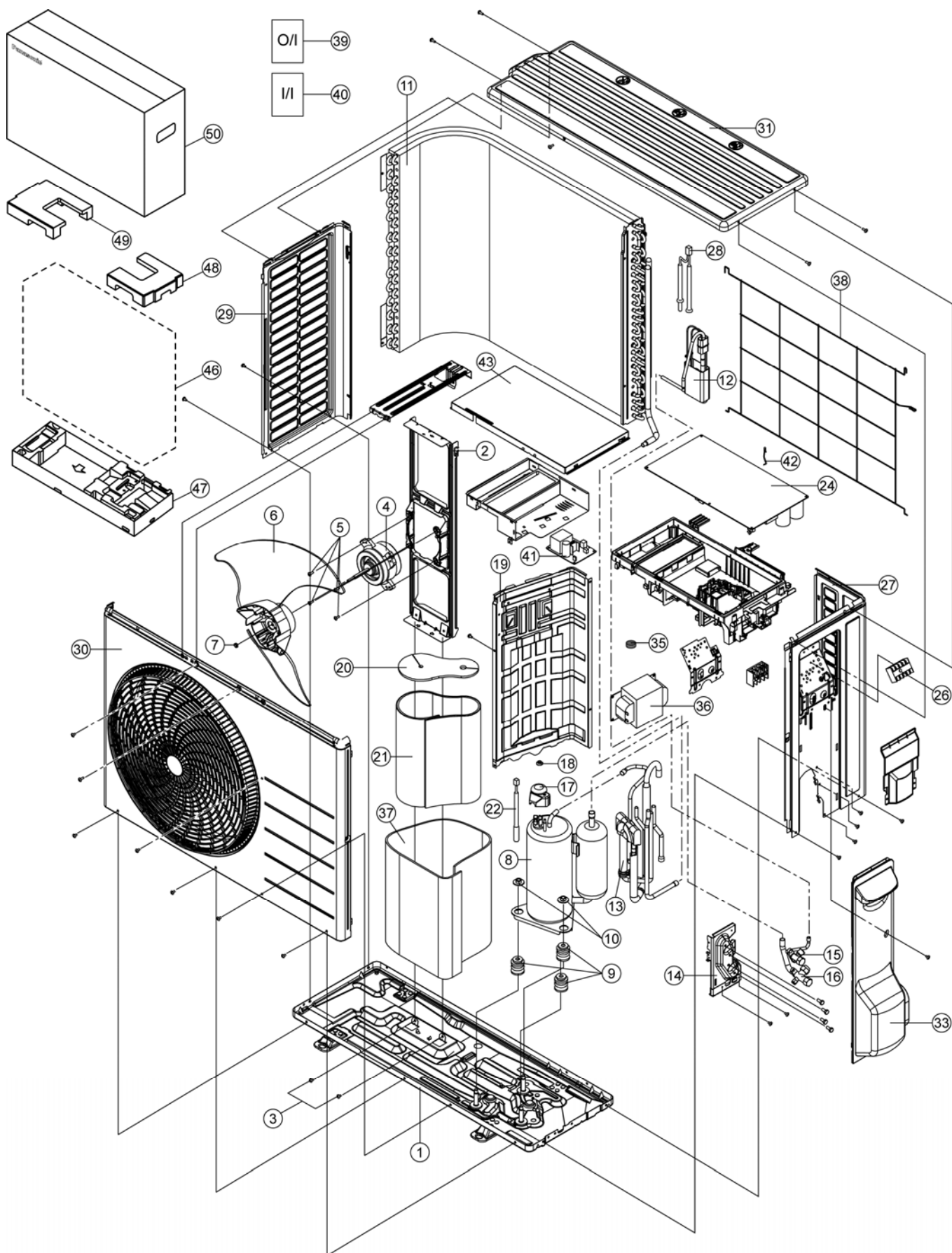
| REF. NO. | PART NAME & DESCRIPTION | QTY. | CS-S9NKR | CS-S12NKR | REMARK |
|----------|---------------------------------------|------|------------|------------|--------|
| 1 | CHASSY COMPLETE | 1 | CWD50C1653 | ← | |
| 2 | FAN MOTOR | 1 | CWA921409 | ← | O |
| 3 | CROSS FLOW FAN COMPLETE | 1 | CWH02C1076 | ← | |
| 4 | BEARING ASS'Y | 1 | CWH64K1006 | ← | |
| 5 | SCREW - CROSS FLOW FAN | 1 | CWH551146 | ← | |
| 7 | EVAPORATOR | 1 | CWB30C3629 | CWB30C3628 | |
| 8 | FLARE NUT (LIQUID) | 1 | CWT251030 | ← | |
| 9 | FLARE NUT (GAS) | 1 | CWT251031 | CWT251032 | |
| 10 | HOLDER SENSOR | 1 | CWH32143 | ← | |
| 11 | CONTROL BOARD CASING | 1 | CWH102449 | ← | |
| 12 | TERMINAL BOARD COMPLETE | 1 | CWA28C2357 | ← | O |
| 13 | ELECTRONIC CONTROLLER - MAIN | 1 | CWA73C7000 | CWA73C7001 | O |
| 15 | ELECTRONIC CO. - INDICATOR & RECEIVER | 1 | CWA747149 | ← | O |
| 16 | SENSOR COMPLETE | 1 | CWA50C2122 | ← | O |
| 23 | CONTROL BOARD TOP COVER | 1 | CWH131467 | ← | |
| 24 | INDICATOR HOLDER | 1 | CWD933406 | ← | |
| 25 | CONTROL BOARD FRONT COVER | 1 | CWH13C1247 | ← | |
| 26 | DISCHARGE GRILLE COMPLETE | 1 | CWE20C3236 | ← | |
| 27 | BACK COVER CHASSIS | 1 | CWD933233 | ← | |
| 28 | FULCRUM | 1 | CWH621131 | ← | |
| 29 | VERTICAL VANE | 8 | CWE241374 | ← | |
| 30 | CONNECTING BAR | 2 | CWE261251 | ← | |
| 33 | AIR SWING MOTOR | 1 | CWA981264 | ← | O |
| 34 | CAP - DRAIN TRAY | 1 | CWH521096 | ← | |
| 35 | HORIZONTAL VANE | 1 | CWE24C1385 | ← | |
| 36 | REMOTE CONTROL COMPLETE | 1 | CWA75C4145 | ← | O |
| 37 | FRONT GRILLE COMPLETE | 1 | CWE11C5449 | ← | O |
| 38 | INTAKE GRILLE COMPLETE | 1 | CWE22C1723 | ← | |
| 39 | GRILLE DOOR | 1 | CWE14C1090 | ← | |
| 40 | AIR FILTER | 2 | CWD001279 | ← | |
| 41 | SCREW - FRONT GRILLE | 3 | XTT4+16CFJ | ← | |
| 42 | CAP - FRONT GRILLE | 2 | CWH521227 | ← | |
| 43 | DRAIN HOSE | 1 | CWH851174 | ← | |
| 44 | INSTALLATION PLATE | 1 | CWH361134 | ← | |
| 45 | BAG COMPLETE - INSTALLATION SCREW | 1 | CWH82C1705 | ← | |
| 46 | AIR PURIFYING FILTER | 1 | CWD00C1280 | ← | |
| 50 | BAG | 1 | CWG861497 | ← | |
| 51 | SHOCK ABSORBER (LEFT) | 1 | CWG713386 | ← | |
| 52 | SHOCK ABSORBER (RIGHT) | 1 | CWG713387 | ← | |
| 53 | C.C.CASE | 1 | CWG567355 | ← | |

(Note)

- All parts are supplied from PAPAMY, Malaysia (Vendor Code: 00029488).
- "O" marked parts are recommended to be kept in stock.

17.2 Outdoor Unit

17.2.1 CU-S9NKR CU-S12NKR



Note

The above exploded view is for the purpose of parts disassembly and replacement.
The non-numbered parts are not kept as standard service parts.

| REF. NO. | PART NAME & DESCRIPTION | QTY. | CU-S9NKR | CU-S12NKR | REMARK |
|----------|---------------------------------|------|--------------|--------------|--------|
| 1 | BASE PAN ASS'Y | 1 | CWD52K1283 | ← | |
| 2 | FAN MOTOR BRACKET | 1 | CWD541167 | ← | |
| 3 | SCREW - FAN MOTOR BRACKET | 2 | CWH551217 | ← | |
| 4 | FAN MOTOR | 1 | CWA951789 | CWA951791 | O |
| 5 | SCREW - FAN MOTOR MOUNT | 4 | CWH55406J | ← | |
| 6 | PROPELLER FAN ASS'Y | 1 | CWH03K1066 | ← | |
| 7 | NUT - PROPELLER FAN | 1 | CWH56053J | ← | |
| 8 | COMPRESSOR | 1 | 5RS092XCD21 | ← | O |
| 9 | ANTI - VIBRATION BUSHING | 3 | CWH50077 | ← | |
| 10 | NUT - COMPRESSOR MOUNT | 3 | CWH56000J | ← | |
| 11 | CONDENSER COMPLETE | 1 | CWB32C3638 | CWB32C3221 | |
| 12 | CAPILLARY TUBE ASSY | 1 | CWB15K1389 | CWB15K1390 | |
| 13 | DISCHARGE MUFFLER | 1 | CWB121010 | ← | |
| 14 | HOLDER - COUPLING | 1 | CWH351233 | ← | |
| 15 | 2 WAYS VALVE (LIQUID) | 1 | CWB021564 | ← | O |
| 16 | 3 WAYS VALVE (GAS) | 1 | CWB011374 | CWB011663 | O |
| 17 | TERMINAL COVER | 1 | CWH171039A | ← | |
| 18 | NUT - TERMINAL COVER | 1 | CWH7080300J | ← | |
| 19 | SOUND PROOF BOARD | 1 | CWH151274 | ← | |
| 20 | SOUND PROOF MATERIAL | 1 | CWG302434 | ← | |
| 21 | SOUND PROOF MATERIAL | 1 | CWG302428 | ← | |
| 22 | SENSOR CO. - COMP TEMP | 1 | CWA50C2830 | ← | O |
| 24 | ELECTRONIC CONTROLLER - MAIN | 1 | CWA73C7005R | CWA73C7006R | O |
| 26 | TERMINAL BOARD ASSY | 1 | CWA28K1110J | ← | O |
| 27 | CABINET SIDE PLATE (R) | 1 | CWE04C1296 | ← | |
| 28 | SENSOR CO. - AIR AND COND TEMP | 1 | CWA50C2825 | ← | O |
| 29 | CABINET SIDE PLATE (L) | 1 | CWE041579A | ← | |
| 30 | CABINET FRONT PLATE ASSY | 1 | CWE06C1360 | ← | |
| 31 | CABINET TOP PLATE | 1 | CWE031148A | ← | |
| 33 | CONTROL BOARD COVER (R) | 1 | CWH13C1253 | ← | |
| 35 | STRAINER | - | - | CWB11025 | |
| 36 | REACTOR | 1 | G0C193J00002 | G0C103J00013 | |
| 37 | SOUND PROOF MATERIAL | 1 | CWG302429 | ← | |
| 38 | WIRE NET | 1 | CWD041166A | ← | |
| 39 | OPERATING INSTRUCTION | 1 | CWF568750 | ← | |
| 40 | INSTALLATION INSTRUCTION | 1 | CWF615545 | ← | |
| 41 | ELECTRONIC CONT. - NOISE FILTER | 1 | CWA746558 | ← | O |
| 42 | HOLDER SENSOR | 1 | CWH32143 | ← | |
| 43 | CONTROL BOARD COVER (TOP) | 1 | CWH131473 | ← | |
| 46 | BAG | 1 | CWG861078 | ← | |
| 47 | BASE BOARD-COMPLETE | 1 | CWG62C1144 | ← | |
| 48 | SHOCK ABSORBER (RIGHT) | 1 | CWG713415 | ← | |
| 49 | SHOCK ABSORBER (LEFT) | 1 | CWG713416 | ← | |
| 50 | C.C.CASE | 1 | CWG566848 | ← | |

(Note)

- All parts are supplied from PAPAMY, Malaysia (Vendor Code: 00029488).
- "O" marked parts are recommended to be kept in stock.