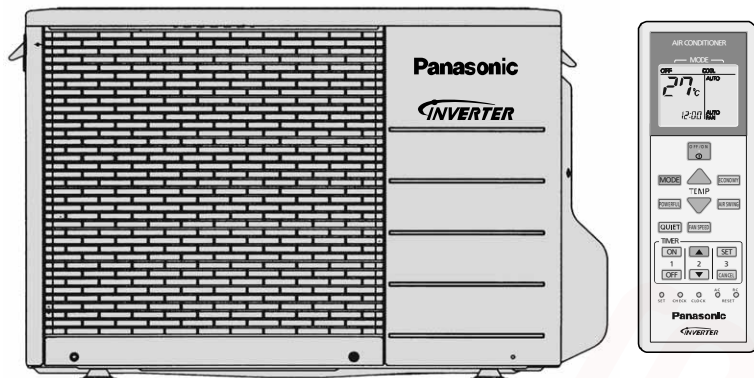


Service Manual

Air Conditioner



Indoor Unit	Outdoor Unit
CS-RE9PKR	CU-RE9PKR
CS-RE12PKR	CU-RE12PKR




Destination
Australia
New Zealand

WARNING

This service information is designed for experienced repair technicians only and is not designed for use by the general public. It does not contain warnings or cautions to advise non-technical individuals of potential dangers in attempting to service a product. Products powered by electricity should be serviced or repaired only by experienced professional technicians. Any attempt to service or repair the products dealt with in this service information by anyone else could result in serious injury or death.

IMPORTANT SAFETY NOTICE

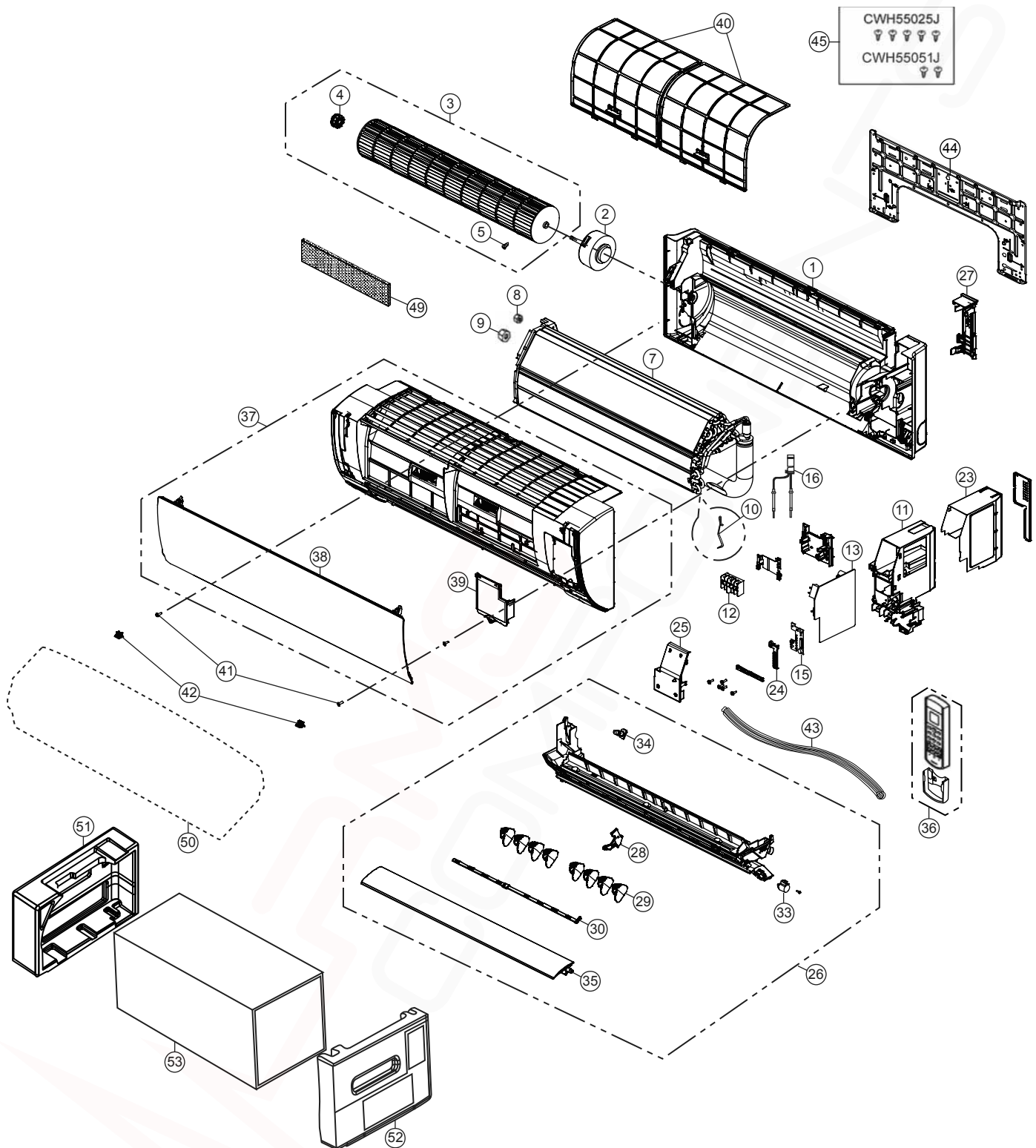
There are special components used in this equipment which are important for safety. These parts are marked by  in the Schematic Diagrams, Circuit Board Diagrams, Exploded Views and Replacement Parts List. It is essential that these critical parts should be replaced with manufacturer's specified parts to prevent shock, fire or other hazards. Do not modify the original design without permission of manufacturer.

PRECAUTION OF LOW TEMPERATURE

In order to avoid frostbite, be assured of no refrigerant leakage during the installation or repairing of refrigerant circuit.

18. Exploded View and Replacement Parts List

18.1 Indoor Unit



Note

The above exploded view is for the purpose of parts disassembly and replacement.
The non-numbered parts are not kept as standard service parts.

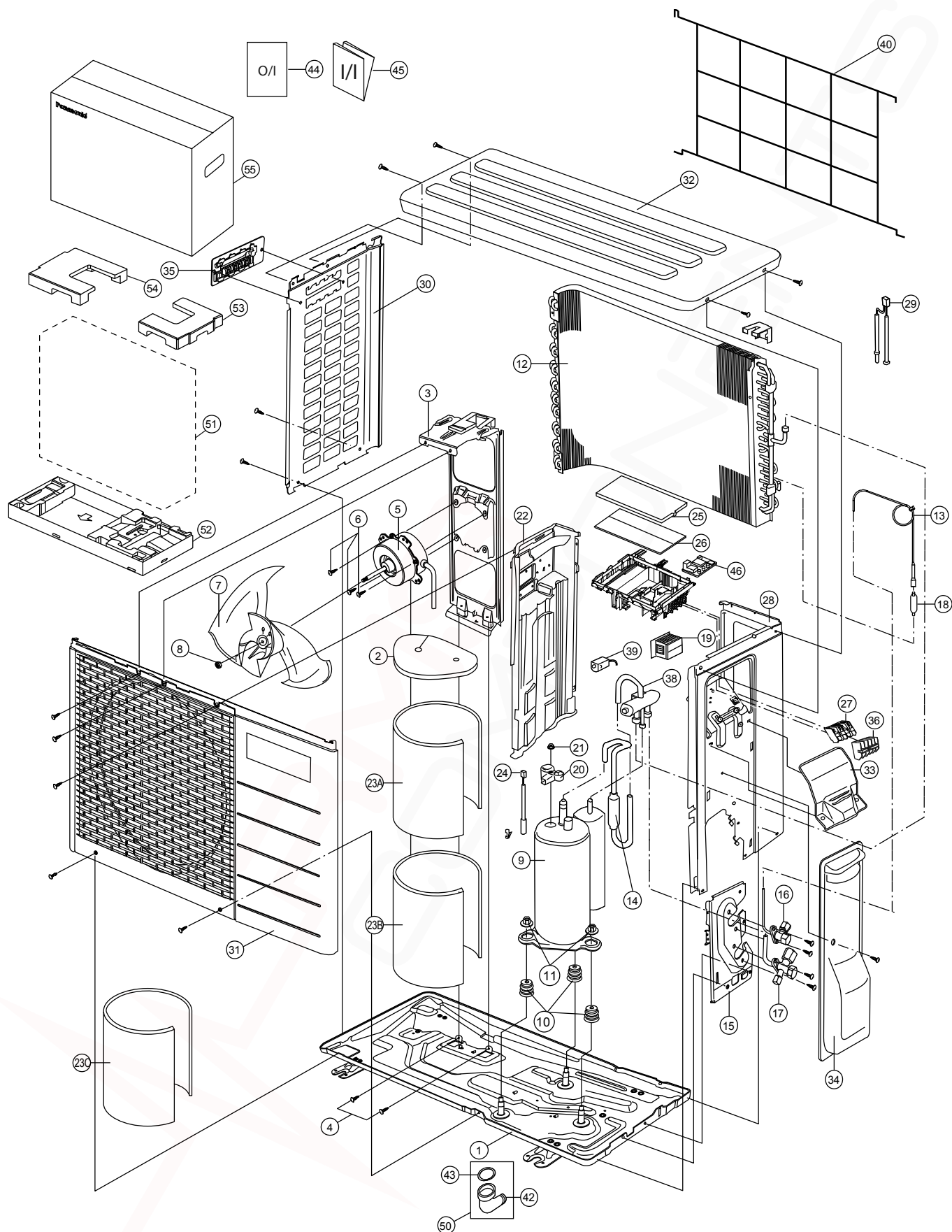
SAFETY	REF. NO.	PART NAME & DESCRIPTION	QTY.	CS-RE9PKR	CS-RE12PKR	REMARK
	1	CHASSIS COMPLETE	1	CWD50C1653	←	
⚠	2	FAN MOTOR	1	L6CBYYYYL0037	←	O
	3	CROSS-FLOW FAN COMPLETE	1	CWH02C1076	←	
	4	BEARING ASSY	1	CWH64K007	←	O
	5	SCREW - CROSS-FLOW FAN	1	CWH551146	←	
	7	EVAPORATOR	1	CWB30C4829	CWB30C4445	
	8	FLARE NUT (LIQUID)	1	CWT251030	←	
	9	FLARE NUT (GAS)	1	CWT251031	CWT251073	
	10	CLIP FOR SENSOR	1	CWH32143	←	
	11	CONTROL BOARD CASING	1	CWH102449	←	
⚠	12	TERMINAL BOARD COMPLETE	1	CWA28C2357	←	O
⚠	13	ELECTRONIC CONTROLLER - MAIN	1	CWA73C8713	CWA73C8714	O
⚠	15	ELECTRONIC CONTROLLER - INDICATOR	1	CWA747149	←	O
	16	SENSOR COMPLETE (PIPING AND SUCTION TEMP)	1	CWA50C2122	←	O
	23	CONTROL BOARD TOP COVER	1	CWH131467	←	
	24	INDICATOR HOLDER	1	CWD933406	←	
	25	CONTROL BOARD FRONT COVER CO.	1	CWH13C1247	←	
	26	DISCHARGE GRILLE COMPLETE	1	CWE20C3236	←	
	27	BACK COVER CHASSIS	1	CWD933233	←	
	28	FULCRUM	1	CWH621131	←	
	29	VERTICAL VANE	8	CWE241374	←	
	30	CONNECTING BAR	2	CWE261251	←	
⚠	33	AIR SWING MOTOR (FOR HORIZONTAL VANE)	1	CWA981264	←	O
	34	CAP - DRAIN TRAY	1	CWH521259	←	
	35	HORIZONTAL VANE COMPLETE	1	CWE24C1385	←	
	36	REMOTE CONTROL COMPLETE	1	CWA75C4506	←	O
	37	FRONT GRILLE COMPLETE	1	CWE11C5449	←	O
	38	INTAKE GRILLE COMPLETE	1	CWE22C1723	←	
	39	GRILLE DOOR COMPLETE	1	CWE14C1090	←	
	40	AIR FILTER	2	CWD001279	←	O
	41	SCREW - FRONT GRILLE	2	XTT4+16CFJ	←	
	42	CAP - FRONT GRILLE	2	CWH521227	←	
	43	DRAIN HOSE	1	CWH851173	←	
	44	INSTALLATION PLATE	1	CWH361134	←	
	45	BAG COMPLETE - INSTALLATION SCREW	1	CWH82C1705	←	
	49	AIR PURIFYING FILTER	1	CWD00C1280	←	O
	50	BAG	1	CWG861497	←	
	51	SHOCK ABSORBER (L)	1	CWG713386	←	
	52	SHOCK ABSORBER (R)	1	CWG713387	←	
	53	C.C. CASE	1	CWG567355	←	

(Note)

- All parts are supplied from PAPAMY, Malaysia (Vendor Code: 00029488).
- "O" marked parts are recommended to be kept in stock.

18.2 Outdoor Unit

18.2.1 CU-RE9PKR



Note

The above exploded view is for the purpose of parts disassembly and replacement.
The non-numbered parts are not kept as standard service parts.

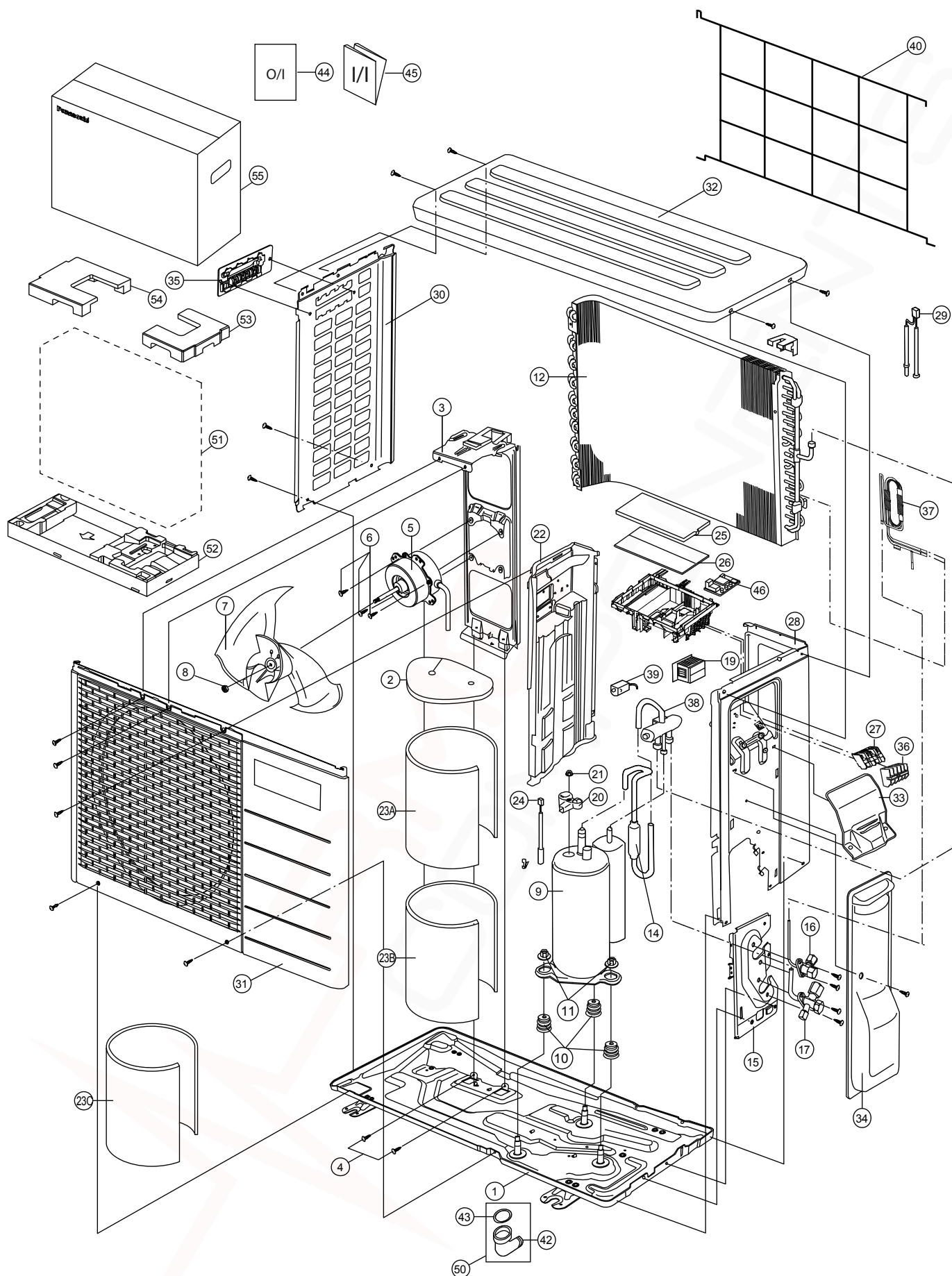
SAFETY	REF. NO.	PART NAME & DESCRIPTION	QTY.	CU-RE9PKR	REMARK
	1	CHASSIS ASSY	1	CWD50K2073	
	2	SOUND PROOF MATERIAL	1	CWG302314	
	3	FAN MOTOR BRACKET	1	CWD541089	
	4	SCREW - FAN MOTOR BRACKET	2	CWH551217	
⚠	5	FAN MOTOR	1	ARS6411AC	O
	6	SCREW - FAN MOTOR MOUNT	4	CWH55252J	
	7	PROPELLER FAN ASSY	1	CWH03K1010	
	8	NUT - PROPELLER FAN	1	CWH56053J	
⚠	9	COMPRESSOR	1	5RS092XCD21	O
	10	ANTI - VIBRATION BUSHING	3	CWH50077	
	11	NUT - COMPRESSOR MOUNT	3	CWH561096	
	12	CONDENSER COMPLETE	1	CWB32C4084	
	13	CAPILLARY TUBE A'SSY	1	CWB15K1538	
	14	DISCHARGE MUFFLER	1	CWB121010	
	15	HOLDER COUPLING	1	CWH351233	
	16	2-WAYS VALVE (LIQUID)	1	CWB021564	O
	17	3-WAY VALVE (GAS)	1	CWB011374	O
	18	STRAINER	1	CWB11025	
⚠	19	REACTOR	1	G0C193J00002	O
	20	TERMINAL COVER	1	CWH171039A	
	21	NUT - TERMINAL COVER	1	CWH7080300J	
	22	SOUND PROOF BOARD	1	CWH151172	
	23A	SOUND PROOF MATERIAL	1	CWG302315	
	23B	SOUND PROOF MATERIAL	1	CWG302316	
	23C	SOUND PROOF MATERIAL	1	CWG302317	
	24	SENSOR CO-COMP TEMP	1	CWA50C2205	O
	25	CONTROL BOARD COVER - TOP	1	CWH131264	
⚠	26	ELECTRONIC CONTROLLER - MAIN	1	CWA73C8715R	O
⚠	27	TERMINAL BOARD ASSY	1	CWA28K1281	O
	28	CABINET SIDE PLATE CO. (RIGHT)	1	CWE04C1545	
	29	SENSOR CO-AIR TEMP AND PIPE TEMP	1	CWA50C3266	O
	30	CABINET SIDE PLATE (LEFT)	1	CWE041248A	
	31	CABINET FRONT PLATE CO.	1	CWE06C1136	
	32	CABINET TOP PLATE	1	CWE031014A	
	33	PLATE - C. B. COVER TERMINAL	1	CWH131301	
	34	CONTROL BOARD COVER CO.	1	CWH13C1211	
	35	HANDLE	1	CWE161010	
⚠	36	TERMINAL BOARD ASSY	1	CWA28K1110J	O
	38	4-WAYS VALVE	1	CWB001063	O
⚠	39	V-COIL COMPLETE (FOR 4 WAY VALVE)	1	CWA43C2431	O
	40	WIRE NET	1	CWD041111A	
	42	FLEXIBLE PIPE (L-TUBE)	1	CWH5850080	
	43	PACKING - L.TUBE	1	CWB81012	
	44	OPERATING INSTRUCTION	1	CWF569730	
	45	INSTALLATION INSTRUCTION	1	CWF616516	
⚠	46	ELECTRONIC CONTROLLER - DEMAND CONTROL	1	CWA747962	O
	50	ACCESSORY CO. (DRAIN ELBOW)	1	CWG87C900	
	51	BAG	1	CWG861078	

SAFETY	REF. NO.	PART NAME & DESCRIPTION	QTY.	CU-RE9PKR	REMARK
	52	BASE BOARD - COMPLETE	1	CWG62C1095	
	53	SHOCK ABSORBER (RIGHT)	1	CWG712969	
	54	SHOCK ABSORBER (LEFT)	1	CWG712970	
	55	C.C. CASE	1	CWG568357	

(Note)

- All parts are supplied from PAPAMY, Malaysia (Vendor Code: 00029488).
- “O” marked parts are recommended to be kept in stock.

18.2.2 CU-RE12PKR



Note

The above exploded view is for the purpose of parts disassembly and replacement.
The non-numbered parts are not kept as standard service parts.

SAFETY	REF. NO.	PART NAME & DESCRIPTION	QTY.	CU-RE12PKR	REMARK
	1	CHASSIS ASSY	1	CWD50K2073	
	2	SOUND PROOF MATERIAL	1	CWG302314	
	3	FAN MOTOR BRACKET	1	CWD541089	
	4	SCREW - FAN MOTOR BRACKET	2	CWH551217	
⚠	5	FAN MOTOR	1	ARS6411AC	O
	6	SCREW - FAN MOTOR MOUNT	4	CWH55252J	
	7	PROPELLER FAN ASSY	1	CWH03K1010	
	8	NUT - PROPELLER FAN	1	CWH56053J	
⚠	9	COMPRESSOR	1	5RS102XBC21	O
	10	ANTI - VIBRATION BUSHING	3	CWH50077	
	11	NUT - COMPRESSOR MOUNT	3	CWH561096	
	12	CONDENSER COMPLETE	1	CWB32C4085	
	14	DISCHARGE MUFFLER	1	CWB121010	
	15	HOLDER COUPLING	1	CWH351233	
	16	2-WAYS VALVE (LIQUID)	1	CWB021457	O
	17	3-WAY VALVE (GAS)	1	CWB011367	O
⚠	19	REACTOR	1	G0C193J00002	O
	20	TERMINAL COVER	1	CWH171039A	
	21	NUT - TERMINAL COVER	1	CWH7080300J	
	22	SOUND PROOF BOARD	1	CWH151172	
	23A	SOUND PROOF MATERIAL	1	CWG302315	
	23B	SOUND PROOF MATERIAL	1	CWG302316	
	23C	SOUND PROOF MATERIAL	1	CWG302317	
	24	SENSOR CO-COMP TEMP	1	CWA50C2205	O
	25	CONTROL BOARD COVER - TOP	1	CWH131264	
⚠	26	ELECTRONIC CONTROLLER - MAIN	1	CWA73C8716R	O
⚠	27	TERMINAL BOARD ASSY	1	CWA28K1281	O
	28	CABINET SIDE PLATE CO. (RIGHT)	1	CWE04C1545	
	29	SENSOR CO-AIR TEMP AND PIPE TEMP	1	CWA50C3266	O
	30	CABINET SIDE PLATE (LEFT)	1	CWE041248A	
	31	CABINET FRONT PLATE CO.	1	CWE06C1136	
	32	CABINET TOP PLATE	1	CWE031014A	
	33	PLATE - C. B. COVER TERMINAL	1	CWH131301	
	34	CONTROL BOARD COVER CO.	1	CWH13C1211	
	35	HANDLE	1	CWE161010	
⚠	36	TERMINAL BOARD ASSY	1	CWA28K1110J	O
	37	TUBE A'SSY (CAPILLARY TUBE & CHECK VALVE)	1	CWT01C6951	O
	38	4-WAYS VALVE	1	CWB001063	O
⚠	39	V-COIL COMPLETE (FOR 4 WAY VALVE)	1	CWA43C2431	O
	40	WIRE NET	1	CWD041111A	
	42	FLEXIBLE PIPE (L-TUBE)	1	CWH5850080	
	43	PACKING - L.TUBE	1	CWB81012	
	44	OPERATING INSTRUCTION	1	CWF569730	
	45	INSTALLATION INSTRUCTION	1	CWF616516	
⚠	46	ELECTRONIC CONTROLLER - DEMAND CONTROL	1	CWA747962	O
	50	ACCESSORY CO. (DRAIN ELBOW)	1	CWG87C900	
	51	BAG	1	CWG861078	

SAFETY	REF. NO.	PART NAME & DESCRIPTION	QTY.	CU-RE12PKR	REMARK
	52	BASE BOARD - COMPLETE	1	CWG62C1095	
	53	SHOCK ABSORBER (RIGHT)	1	CWG712969	
	54	SHOCK ABSORBER (LEFT)	1	CWG712970	
	55	C.C. CASE	1	CWG568357	

(Note)

- All parts are supplied from PAPAMY, Malaysia (Vendor Code: 00029488).
- “O” marked parts are recommended to be kept in stock.