

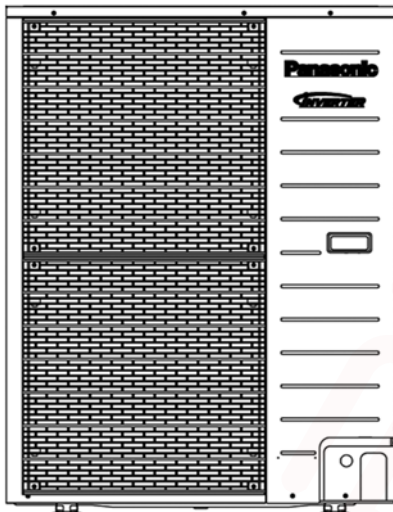
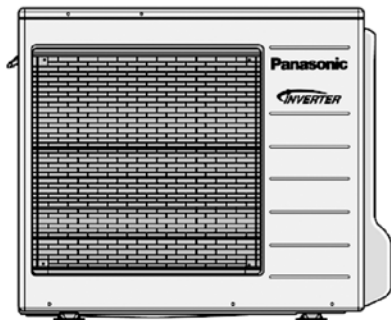
# Service Manual

## Air Conditioner



**Indoor Unit**  
**CS-RE18NKR**  
**CS-RE24NKR**  
**CS-RE28NKR**

**Outdoor Unit**  
**CU-RE18NKR**  
**CU-RE24NKR**  
**CU-RE28NKR**



### **! WARNING**

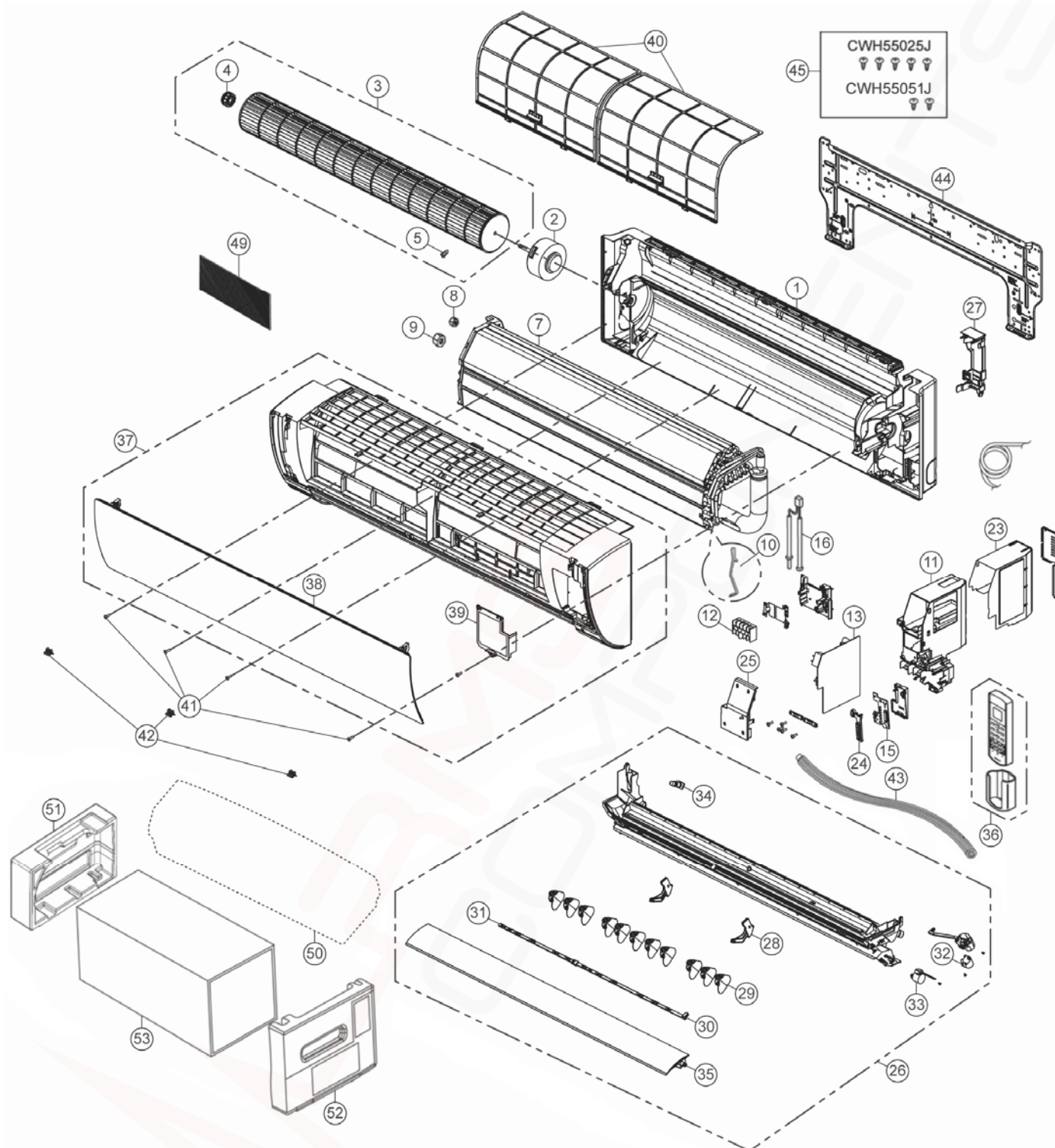
This service information is designed for experienced repair technicians only and is not designed for use by the general public. It does not contain warnings or cautions to advise non-technical individuals of potential dangers in attempting to service a product. Products powered by electricity should be serviced or repaired only by experienced professional technicians. Any attempt to service or repair the product or products dealt with in this service information by anyone else could result in serious injury or death.

### **! PRECAUTION OF LOW TEMPERATURE**

In order to avoid frostbite, be assured of no refrigerant leakage during the installation or repairing of refrigeration circuit.

## 18. Exploded View and Replacement Parts List

### 18.1 Indoor Unit



#### Note

The above exploded view is for the purpose of parts disassembly and replacement.  
The non-numbered parts are not kept as standard service parts.

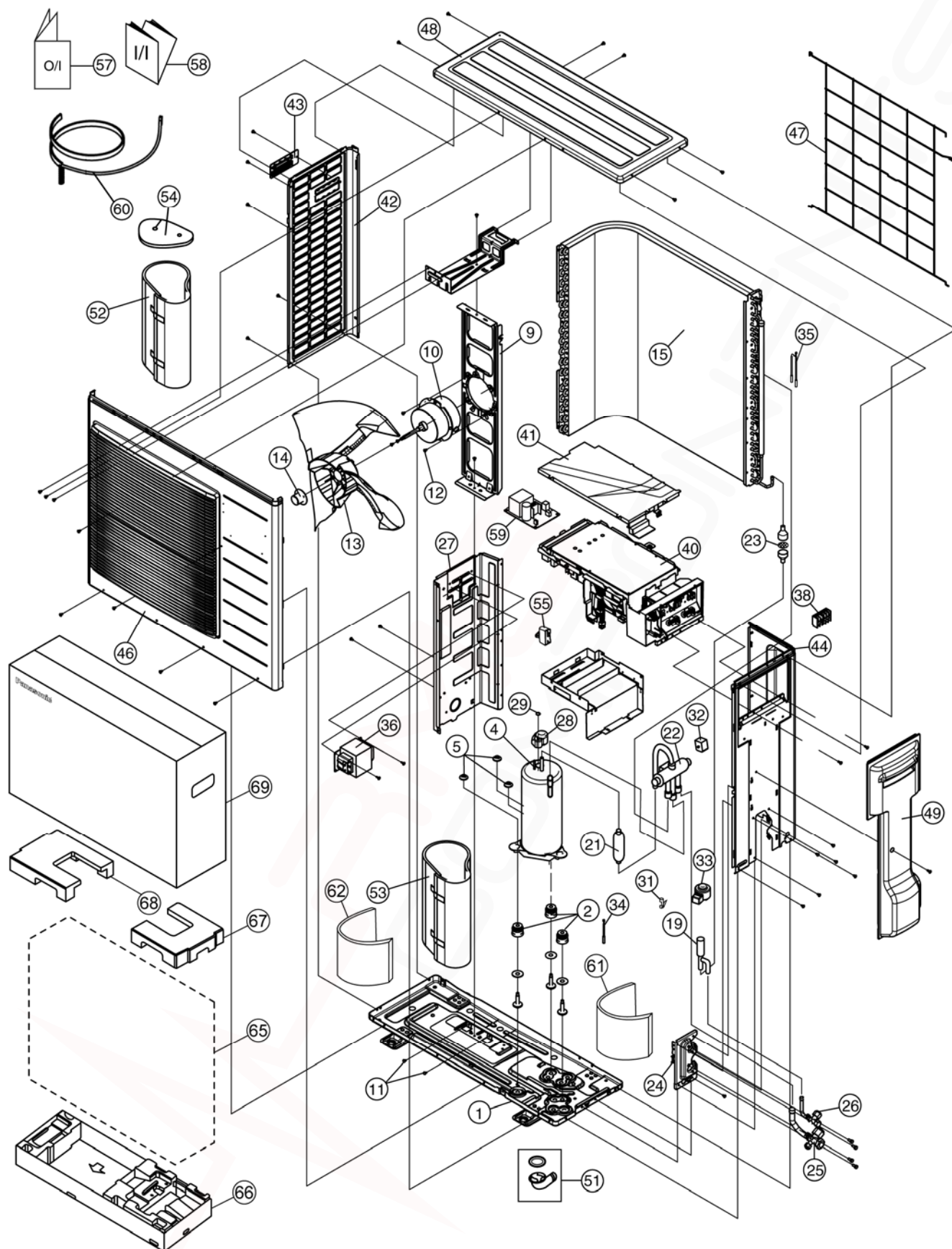
| REF NO. | PART NAME & DESCRIPTION               | QTY. | CS-RE18NKR | CS-RE24NKR | CS-RE28NKR | REMARK |
|---------|---------------------------------------|------|------------|------------|------------|--------|
| 1       | CHASSY COMPLETE                       | 1    | CWD50C1623 | ←          | ←          |        |
| 2       | FAN MOTOR                             | 1    | ARW7627AC  | ←          | ←          | O      |
| 3       | CROSS FLOW FAN COMPLETE               | 1    | CWH02C1077 | ←          | ←          |        |
| 4       | BEARING ASS'Y                         | 1    | CWH64K1006 | ←          | ←          |        |
| 5       | SCREW - CROSS FLOW FAN                | 1    | CWH551146  | ←          | ←          |        |
| 7       | EVAPORATOR                            | 1    | CWB30C2900 | CWB30C4227 | CWB30C3855 |        |
| 8       | FLARE NUT (LIQUID)                    | 1    | CWT251030  | ←          | ←          |        |
| 9       | FLARE NUT (GAS)                       | 1    | CWT251032  | CWT251033  | ←          |        |
| 10      | HOLDER SENSOR                         | 1    | CWH32143   | ←          | ←          |        |
| 11      | CONTROL BOARD CASING                  | 1    | CWH102449  | ←          | ←          |        |
| 12      | TERMINAL BOARD COMPLETE               | 1    | CWA28C2357 | ←          | ←          | O      |
| 13      | ELECTRONIC CONTROLLER - MAIN          | 1    | CWA73C6939 | CWA73C6943 | CWA73C6946 | O      |
| 15      | ELECTRONIC CO. - INDICATOR & RECEIVER | 1    | CWA747149  | ←          | ←          | O      |
| 16      | SENSOR COMPLETE                       | 1    | CWA50C2122 | CWA50C2782 | ←          | O      |
| 23      | CONTROL BOARD TOP COVER               | 1    | CWH131467  | ←          | ←          |        |
| 24      | INDICATOR HOLDER                      | 1    | CWD933406  | ←          | ←          |        |
| 25      | CONTROL BOARD FRONT COVER             | 1    | CWH13C1247 | ←          | ←          |        |
| 26      | DISCHARGE GRILLE COMPLETE             | 1    | CWE20C3242 | ←          | ←          |        |
| 27      | BACK COVER CHASSIS                    | 1    | CWD933031  | ←          | ←          |        |
| 28      | FULCRUM                               | 2    | CWH621138  | ←          | ←          |        |
| 29      | VERTICAL VANE                         | 11   | CWE241374  | ←          | ←          |        |
| 30      | CONNECTING BAR                        | 1    | CWE261257  | ←          | ←          |        |
| 31      | CONNECTING BAR                        | 1    | CWE261258  | ←          | ←          |        |
| 32      | AIR SWING MOTOR                       | 1    | CWA981241  | ←          | ←          | O      |
| 33      | AIR SWING MOTOR                       | 1    | CWA98K1018 | ←          | ←          | O      |
| 34      | CAP - DRAIN TRAY                      | 1    | CWH521096  | ←          | ←          |        |
| 35      | HORIZONTAL VANE                       | 1    | CWE24C1392 | ←          | ←          |        |
| 36      | REMOTE CONTROL COMPLETE               | 1    | CWA75C4149 | ←          | ←          | O      |
| 37      | FRONT GRILLE COMPLETE                 | 1    | CWE11C5447 | CWE11C5448 | ←          | O      |
| 38      | INTAKE GRILLE COMPLETE                | 1    | CWE22C1728 | ←          | ←          |        |
| 39      | GRILLE DOOR                           | 1    | CWE14C1090 | ←          | ←          |        |
| 40      | AIR FILTER                            | 2    | CWD001283  | ←          | ←          |        |
| 41      | SCREW - FRONT GRILLE                  | 3    | XTT4+16CFJ | ←          | ←          |        |
| 42      | CAP - FRONT GRILLE                    | 3    | CWH521227  | ←          | ←          |        |
| 43      | DRAIN HOSE                            | 1    | CWH851173  | ←          | ←          |        |
| 44      | INSTALLATION PLATE                    | 1    | CWH361098  | ←          | ←          |        |
| 45      | BAG COMPLETE - INSTALLATION SCREW     | 1    | CWH82C1705 | ←          | ←          |        |
| 49      | AIR PURIFYING FILTER                  | 1    | CWD00C1280 | ←          | ←          | O      |
| 50      | BAG                                   | 1    | CWG861498  | ←          | ←          |        |
| 51      | SHOCK ABSORBER (LEFT)                 | 1    | CWG713402  | ←          | ←          |        |
| 52      | SHOCK ABSORBER (RIGHT)                | 1    | CWG713403  | ←          | ←          |        |
| 53      | C.C.CASE                              | 1    | CWG567455  | ←          | ←          |        |

(Note)

- All parts are supplied from PAPAMY, Malaysia (Vendor Code: 00029488).
- "O" marked parts are recommended to be kept in stock.

## 18.2 Outdoor Unit

### 18.2.1 CU-RE18NKR



#### Note

The above exploded view is for the purpose of parts disassembly and replacement.  
The non-numbered parts are not kept as standard service parts.

| REF. NO. | PART NAME & DESCRIPTION        | QTY | CU-RE18NKR   | REMARKS |
|----------|--------------------------------|-----|--------------|---------|
| 1        | BASE PAN ASS'Y                 | 1   | CWD52K1191   |         |
| 2        | ANTI - VIBRATION BUSHING       | 3   | CWH50077     |         |
| 4        | COMPRESSOR                     | 1   | 5RD132XFA21  | O       |
| 5        | NUT - COMPRESSOR MOUNT         | 3   | CWH56000J    |         |
| 9        | FAN MOTOR BRACKET              | 1   | CWD541126    |         |
| 10       | FAN MOTOR                      | 1   | CWA951620    | O       |
| 11       | SCREW - FAN MOTOR BRACKET      | 3   | CWH551217    |         |
| 12       | SCREW - FAN MOTOR MOUNT        | 3   | CWH551040J   |         |
| 13       | PROPELLER FAN ASS'Y            | 1   | CWH001019    |         |
| 14       | NUT - PROPELLER FAN            | 1   | CWH561092    |         |
| 15       | CONDENSER COMPLETE             | 1   | CWB32C3230   |         |
| 19       | EXPANSION VALVE                | 1   | CWB051016J   |         |
| 21       | RECEIVER                       | 1   | CWB14011     |         |
| 22       | 4 WAYS VALVE                   | 1   | CWB001026J   |         |
| 23       | STRAINER                       | 1   | CWB11094     |         |
| 24       | HOLDER - COUPLING              | 1   | CWH351227    |         |
| 25       | 3 WAYS VALVE (GAS)             | 1   | CWB011338    | O       |
| 26       | 2 WAYS VALVE (LIQUID)          | 1   | CWB021292    | O       |
| 27       | SOUND PROOF BOARD              | 1   | CWH151198    |         |
| 28       | TERMINAL COVER                 | 1   | CWH171039A   |         |
| 29       | NUT - TERMINAL COVER           | 1   | CWH7080300J  |         |
| 31       | HOLDER SENSOR                  | 1   | CWH711010    |         |
| 32       | V-COIL COMPLETE - 4-WAY VALVE  | 1   | CWA43C2169J  |         |
| 33       | V-COIL COMPLETE - EXP.VALVE    | 1   | CWA43C2257   |         |
| 34       | SENSOR CO. - COMP TEMP         | 1   | CWA50C2656   | O       |
| 35       | SENSOR CO. - AIR AND COND TEMP | 1   | CWA50C2517   | O       |
| 36       | REACTOR                        | 1   | G0C153J00007 |         |
| 38       | TERMINAL BOARD ASSY            | 1   | CWA28K1110J  | O       |
| 40       | ELECTRONIC CONTROLLER - MAIN   | 1   | CWA73C6928R  | O       |
| 41       | CONTROL BOARD COVER (TOP)      | 1   | CWH131333    |         |
| 42       | CABINET SIDE PLATE (L)         | 1   | CWE041317A   |         |
| 43       | HANDLE                         | 1   | CWE161010    |         |
| 44       | CABINET SIDE PLATE (R)         | 1   | CWE041318A   |         |
| 46       | CABINET FRONT PLATE ASSY       | 1   | CWE06K1084   |         |
| 47       | WIRE NET                       | 1   | CWD041128A   |         |
| 48       | CABINET TOP PLATE              | 1   | CWE031083A   |         |
| 49       | CONTROL BOARD COVER (R)        | 1   | CWH13C1185   |         |
| 51       | ACCESSORY CO. (DRAIN ELBOW)    | 1   | CWG87C900    |         |
| 52       | SOUND PROOF MATERIAL           | 1   | CWG302629    |         |
| 53       | SOUND PROOF MATERIAL           | 1   | CWG302636    |         |
| 54       | SOUND PROOF MATERIAL           | 1   | CWG302656    |         |
| 55       | CAPACITOR - FM                 | 1   | DS461305QP-A |         |
| 57       | OPERATING INSTRUCTION          | 1   | CWF568748    |         |
| 58       | INSTALLATION INSTRUCTION       | 1   | CWF615543    |         |
| 59       | ELECTRONIC CONTROLLER          | 1   | CWH14C8772   | O       |
| 60       | CRANKCASE HEATER               | 1   | CWA341044    |         |
| 61       | SOUND PROOF MATERIAL           | 1   | CWG302521    |         |
| 62       | SOUND PROOF MATERIAL           | 1   | CWG302766    |         |
| 65       | BAG                            | 1   | CWG861154    |         |
| 66       | BASE BOARD - COMPLETE          | 1   | CWG62C1082   |         |

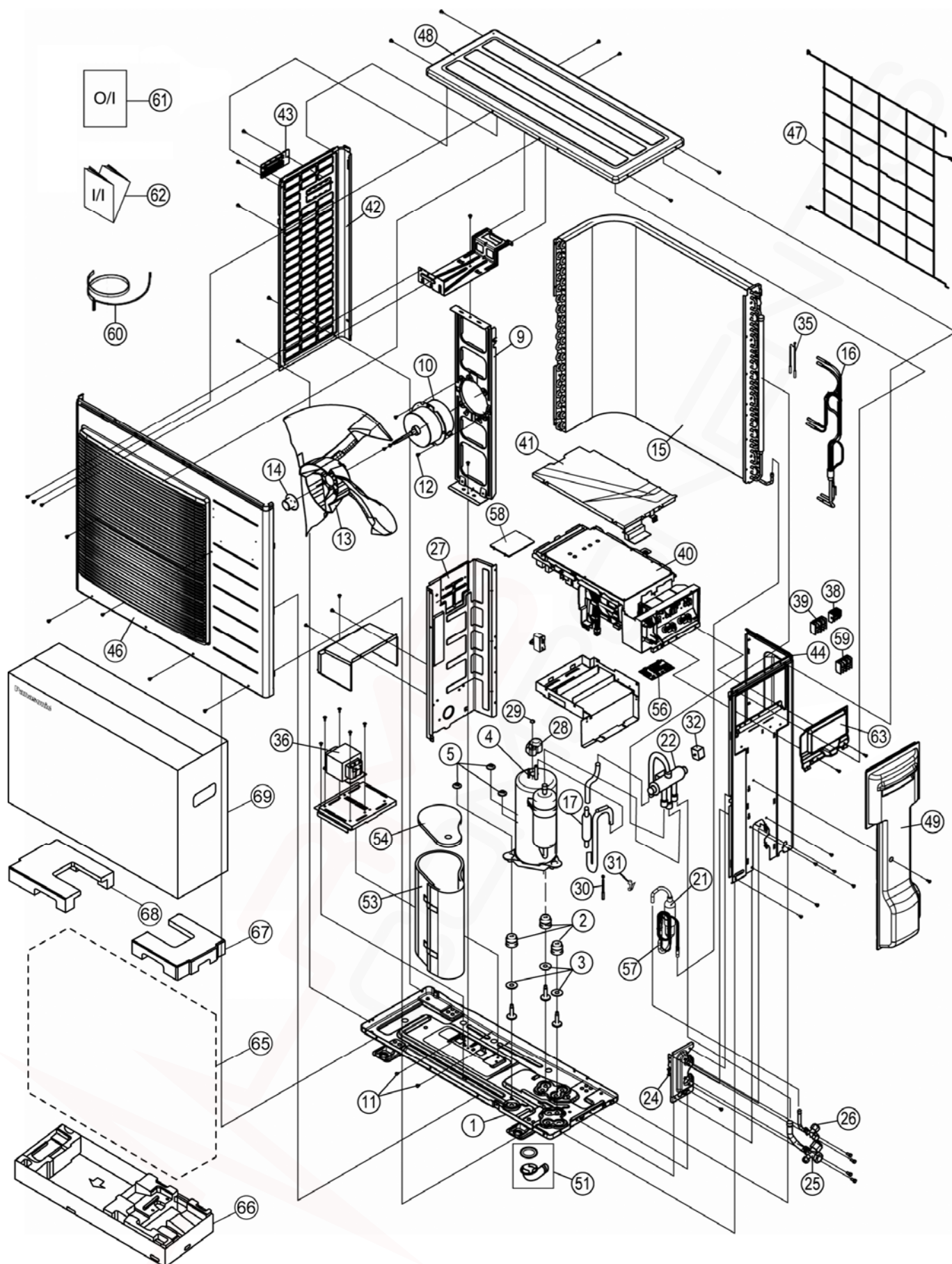
| REF. NO. | PART NAME & DESCRIPTION | QTY | CU-RE18NKR | REMARKS |
|----------|-------------------------|-----|------------|---------|
| 67       | SHOCK ABSORBER (RIGHT)  | 1   | CWG712879  |         |
| 68       | SHOCK ABSORBER (LEFT)   | 1   | CWG712880  |         |
| 69       | C.C.CASE                | 1   | CWG565614  |         |

(Note)

- All parts are supplied from PAPAMY, Malaysia (Vendor Code: 00029488).
- “O” marked parts are recommended to be kept in stock.



## 18.2.2 CU-RE24NKR



### Note

The above exploded view is for the purpose of parts disassembly and replacement.  
The non-numbered parts are not kept as standard service parts.

| REF. NO. | PART NAME & DESCRIPTION         | QTY | CU-RE24NKR   | REMARKS |
|----------|---------------------------------|-----|--------------|---------|
| 1        | BASE PAN ASS'Y                  | 1   | CWD52K1190   |         |
| 2        | ANTI - VIBRATION BUSHING        | 3   | CWH50055     |         |
| 3        | PACKING                         | 3   | CWB81043     |         |
| 4        | COMPRESSOR                      | 1   | 5KD240XAF21  | O       |
| 5        | NUT - COMPRESSOR MOUNT          | 3   | CWH561049    |         |
| 9        | FAN MOTOR BRACKET               | 1   | CWD541127    |         |
| 10       | FAN MOTOR                       | 1   | EHDS80C60AC  | O       |
| 11       | SCREW - FAN MOTOR BRACKET       | 3   | CWH551217    |         |
| 12       | SCREW - FAN MOTOR MOUNT         | 3   | CWH551323    |         |
| 13       | PROPELLER FAN ASS'Y             | 1   | CWH00K1006   |         |
| 14       | NUT - PROPELLER FAN             | 1   | CWH561092    |         |
| 15       | CONDENSER COMPLETE              | 1   | CWB32C3295   |         |
| 16       | TUBE ASSY (CAP.TUBE)            | 1   | CWT01C5849   |         |
| 17       | DISCHARGE MUFFLER               | 1   | CWB121013    |         |
| 21       | RECEIVER                        | 1   | CWB14030     |         |
| 22       | 4 WAYS VALVE                    | 1   | CWB001026J   |         |
| 24       | HOLDER - COUPLING               | 1   | CWH351057    |         |
| 25       | 3 WAYS VALVE (GAS)              | 1   | CWB011363    | O       |
| 26       | 2 WAYS VALVE (LIQUID)           | 1   | CWB021464    | O       |
| 27       | SOUND PROOF BOARD               | 1   | CWH151277    |         |
| 28       | TERMINAL COVER                  | 1   | CWH171039A   |         |
| 29       | NUT - TERMINAL COVER            | 1   | CWH7080300J  |         |
| 30       | SENSOR CO. - COMP TEMP          | 1   | CWA50C2656   | O       |
| 31       | HOLDER SENSOR                   | 1   | CWH711010    |         |
| 32       | V-COIL COMPLETE                 | 1   | CWA43C2169J  |         |
| 35       | SENSOR CO. - AIR AND COND TEMP  | 1   | CWA50C2517   | O       |
| 36       | REACTOR                         | 1   | G0C452J00002 |         |
| 38       | TERMINAL BOARD ASSY             | 1   | CWA28K1076J  | O       |
| 39       | TERMINAL BOARD ASSY             | 1   | CWA28K1162   | O       |
| 40       | ELECTRONIC CONTROLLER - MAIN    | 1   | CWA73C6932R  | O       |
| 41       | CONTROL BOARD COVER (TOP)       | 1   | CWH131333    |         |
| 42       | CABINET SIDE PLATE (L)          | 1   | CWE041317A   |         |
| 43       | HANDLE                          | 1   | CWE161010    |         |
| 44       | CABINET SIDE PLATE (R)          | 1   | CWE041319A   |         |
| 46       | CABINET FRONT PLATE ASSY        | 1   | CWE06K1063   |         |
| 47       | WIRE NET                        | 1   | CWD041128A   |         |
| 48       | CABINET TOP PLATE               | 1   | CWE031083A   |         |
| 49       | CONTROL BOARD COVER (R)         | 1   | CWH13C1185   |         |
| 51       | ACCESSORY CO. (DRAIN ELBOW)     | 1   | CWG87C900    |         |
| 53       | SOUND PROOF MATERIAL            | 1   | CWG302245    |         |
| 54       | SOUND PROOF MATERIAL            | 1   | CWG302246    |         |
| 56       | ELECTRONIC CONT. - NOISE FILTER | 1   | CWA746792    | O       |
| 57       | TUBE ASSY (CAP.TUBE & RECEIVER) | 1   | CWT01C5851   |         |
| 58       | ELECTRONIC CONTROLLER           | 1   | CWH14C8772   | O       |
| 59       | TERMINAL BOARD ASSY             | 1   | CWA28K1281   | O       |
| 60       | CRANKCASE HEATER                | 1   | CWA341047    |         |
| 61       | OPERATING INSTRUCTION           | 1   | CWF568748    |         |
| 62       | INSTALLATION INSTRUCTION        | 1   | CWF615543    |         |
| 65       | BAG                             | 1   | CWG861154    |         |
| 66       | BASE BOARD - COMPLETE           | 1   | CWG62C1081   |         |

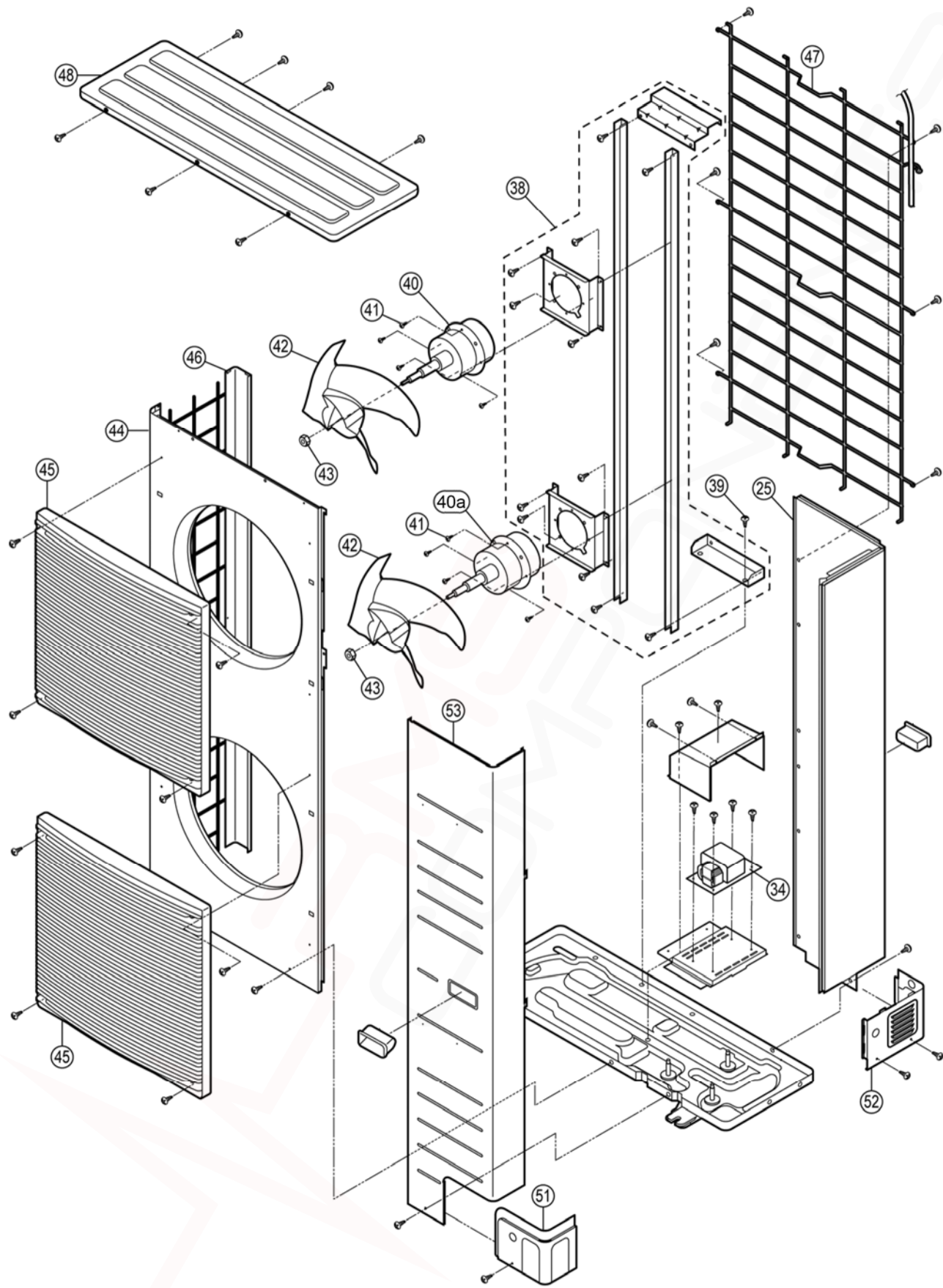


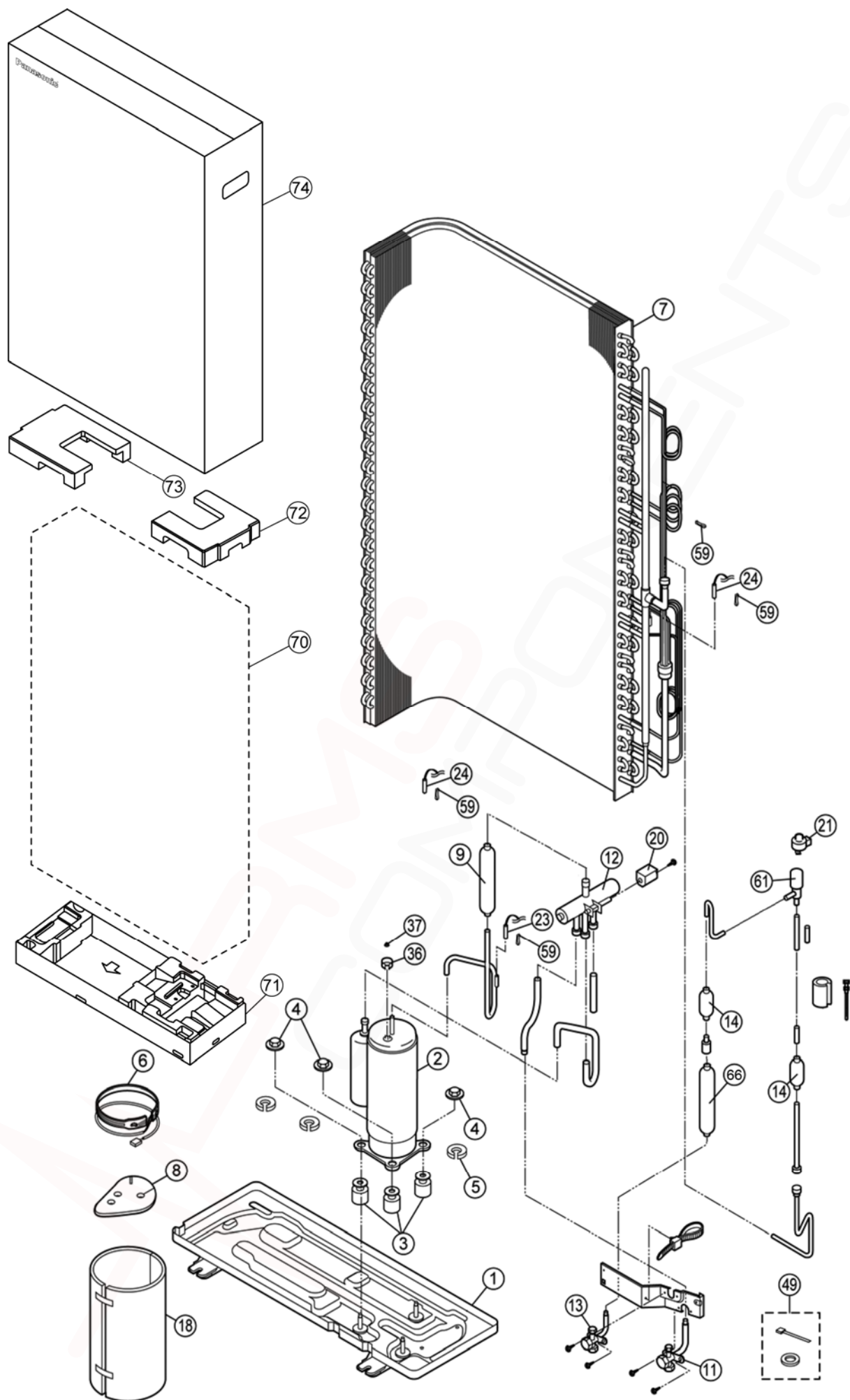
| REF. NO. | PART NAME & DESCRIPTION | QTY | CU-RE24NKR | REMARKS |
|----------|-------------------------|-----|------------|---------|
| 67       | SHOCK ABSORBER (RIGHT)  | 1   | CWG712879  |         |
| 68       | SHOCK ABSORBER (LEFT)   | 1   | CWG712880  |         |
| 69       | C.C.CASE                | 1   | CWG565546  |         |

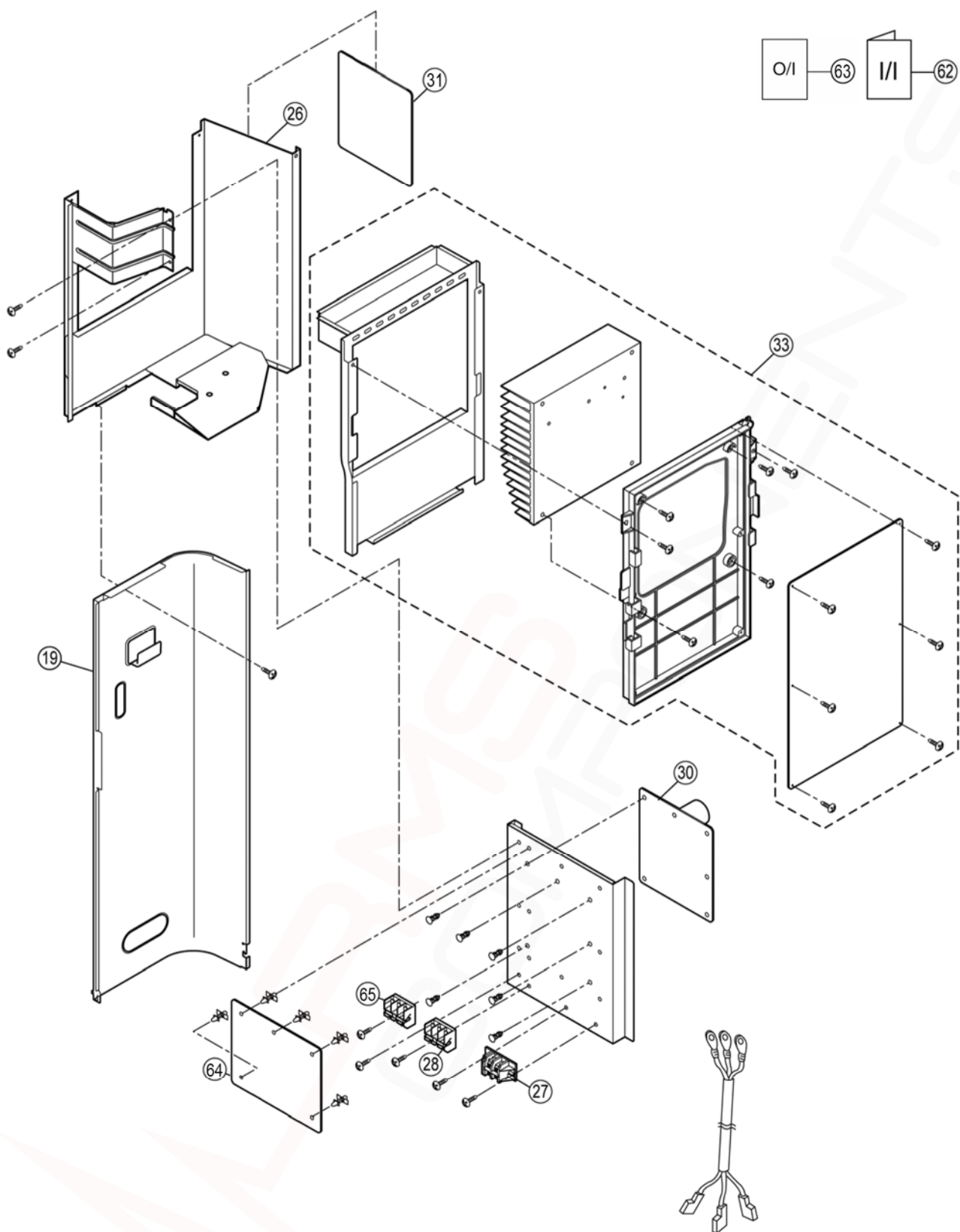
(Note)

- All parts are supplied from PAPAMY, Malaysia (Vendor Code: 00029488).
- "O" marked parts are recommended to be kept in stock.

18.2.3 CU-RE28NKR







#### Note

The above exploded view is for the purpose of parts disassembly and replacement.  
The non-numbered parts are not kept as standard service parts.

| REF. NO. | PART NAME & DESCRIPTION        | QTY | CU-RE28NKR   | REMARKS |
|----------|--------------------------------|-----|--------------|---------|
| 1        | BASE PAN ASS'Y                 | 1   | CWD52K1295   |         |
| 2        | COMPRESSOR                     | 1   | 5KD240XAF21  | O       |
| 3        | ANTI - VIBRATION BUSHING       | 3   | CWH50055     |         |
| 4        | NUT - COMPRESSOR MOUNT         | 3   | CWH561049    |         |
| 5        | PACKING                        | 3   | CWB811017    |         |
| 6        | CRANKCASE HEATER               | 1   | CWA341080    |         |
| 7        | CONDENSER COMPLETE             | 1   | CWB32C3300   |         |
| 8        | SOUND PROOF MATERIAL           | 1   | CWG302246    |         |
| 9        | DISCHARGE MUFFLER              | 1   | CWB121013    |         |
| 11       | 3 WAYS VALVE (GAS)             | 1   | CWB011251    | O       |
| 12       | 4 WAYS VALVE                   | 1   | CWB001026J   |         |
| 13       | 2 WAYS VALVE (LIQUID)          | 1   | CWB021330    | O       |
| 14       | STRAINER                       | 2   | CWB111032    |         |
| 18       | SOUND PROOF MATERIAL           | 1   | CWG302245    |         |
| 19       | SOUND PROOF BOARD              | 1   | CWH151294    |         |
| 20       | V-COIL COMPLETE - 4-WAY VALVE  | 1   | CWA43C2169J  |         |
| 21       | V-COIL COMPLETE - EXP.VALVE    | 1   | CWA43C2128J  |         |
| 23       | SENSOR CO. - COMP TEMP         | 1   | CWA50C2656   | O       |
| 24       | SENSOR CO. - AIR AND COND TEMP | 1   | CWA50C2652   | O       |
| 25       | CABINET REAR PLATE - COMPLETE  | 1   | CWE02C1043   |         |
| 26       | CONTROL BOARD ASSY             | 1   | CWH10K1158   |         |
| 27       | TERMINAL BOARD ASSY            | 1   | CWA28K1162   | O       |
| 28       | TERMINAL BOARD ASSY            | 1   | CWA28K1076J  | O       |
| 30       | ELECTRONIC CONT. - CAPACITOR   | 1   | CWA746775    | O       |
| 31       | ELECTRONIC CONTROLLER - NF     | 1   | CWA746758    | O       |
| 33       | ELECTRONIC CONTROLLER - MAIN   | 1   | CWA73C6935R  | O       |
| 34       | REACTOR                        | 1   | G0C452J00002 |         |
| 36       | TERMINAL COVER                 | 1   | CWH171039A   |         |
| 37       | NUT - TERMINAL COVER           | 1   | CWH7080300J  |         |
| 38       | FAN MOTOR BRACKET              | 1   | CWD54K1063   |         |
| 39       | SCREW - FAN MOTOR BRACKET      | 2   | CWH551040J   |         |
| 40       | FAN MOTOR (UPPER)              | 1   | ARW8405AC    |         |
| 40a      | FAN MOTOR (BOTTOM)             | 1   | ARW8406AC    |         |
| 41       | SCREW - FAN MOTOR MOUNT        | 8   | CWH55252J    |         |
| 42       | PROPELLER FAN ASS'Y            | 2   | CWH03K1065   |         |
| 43       | NUT - PROPELLER FAN            | 2   | CWH56053J    |         |
| 44       | CABINET FRONT PLATE ASSY       | 1   | CWE06C1408   |         |
| 45       | DISCHARGE GRILLE               | 2   | CWE201075    |         |
| 46       | CABINET SIDE PLATE ASSY        | 1   | CWE04K1022A  |         |
| 47       | WIRE NET                       | 1   | CWD041129A   |         |
| 48       | CABINET TOP PLATE              | 1   | CWE03C1095   |         |
| 49       | ACCESSORY CO. (DRAIN ELBOW)    | 1   | CWG87C900    |         |
| 51       | L-SHAPED PLATE                 | 1   | CWD601074A   |         |
| 52       | L-SHAPED PLATE                 | 1   | CWD601075A   |         |
| 53       | CABINET FRONT PLATE            | 1   | CWE061092A   |         |
| 59       | HOLDER SENSOR                  | 3   | CWH711010    |         |
| 61       | EXPANSION VALVE                | 1   | CWB051018J   |         |
| 62       | INSTALLATION INSTRUCTION       | 1   | CWF615544    |         |
| 63       | OPERATING INSTRUCTION          | 1   | CWF568748    |         |
| 64       | ELECTRONIC CONTROLLER          | 1   | CWA746558    | O       |



| REF. NO. | PART NAME & DESCRIPTION | QTY | CU-RE28NKR | REMARKS |
|----------|-------------------------|-----|------------|---------|
| 65       | TERMINAL BOARD ASSY     | 1   | CWA28K1281 | O       |
| 66       | RECEIVER                | 1   | CWB14017   |         |
| 70       | BAG                     | 1   | CWG861239  |         |
| 71       | BASE BOARD - COMPLETE   | 1   | CWG62C1086 |         |
| 72       | SHOCK ABSORBER (RIGHT)  | 2   | CWG712852  |         |
| 73       | SHOCK ABSORBER (LEFT)   | 1   | CWG712854  |         |
| 74       | C.C.CASE                | 1   | CWG567822  |         |

(Note)

- All parts are supplied from PAPAMY, Malaysia (Vendor Code: 00029488).
- "O" marked parts are recommended to be kept in stock.