

Service Manual

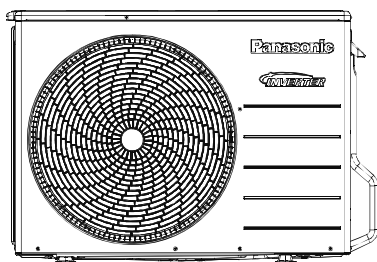
Air Conditioner



Indoor Unit
CS-E9SB4RW

Outdoor Unit
CU-E9SB4R

Destination
Oceania



Please file and use this manual together with the service manual for Model No. CU-4E23QBR CU-4E27QBR CU-5E34QBR, Order No. PAPAMY1404064CE

⚠ WARNING

This service information is designed for experienced repair technicians only and is not designed for use by the general public. It does not contain warnings or cautions to advise non-technical individuals of potential dangers in attempting to service a product. Products powered by electricity should be serviced or repaired only by experienced professional technicians. Any attempt to service or repair the products dealt with in this service information by anyone else could result in serious injury or death.

IMPORTANT SAFETY NOTICE

There are special components used in this equipment which are important for safety. These parts are marked by ⚠ in the Schematic Diagrams, Circuit Board Diagrams, Exploded Views and Replacement Parts List. It is essential that these critical parts should be replaced with manufacturer's specified parts to prevent shock, fire or other hazards. Do not modify the original design without permission of manufacturer.



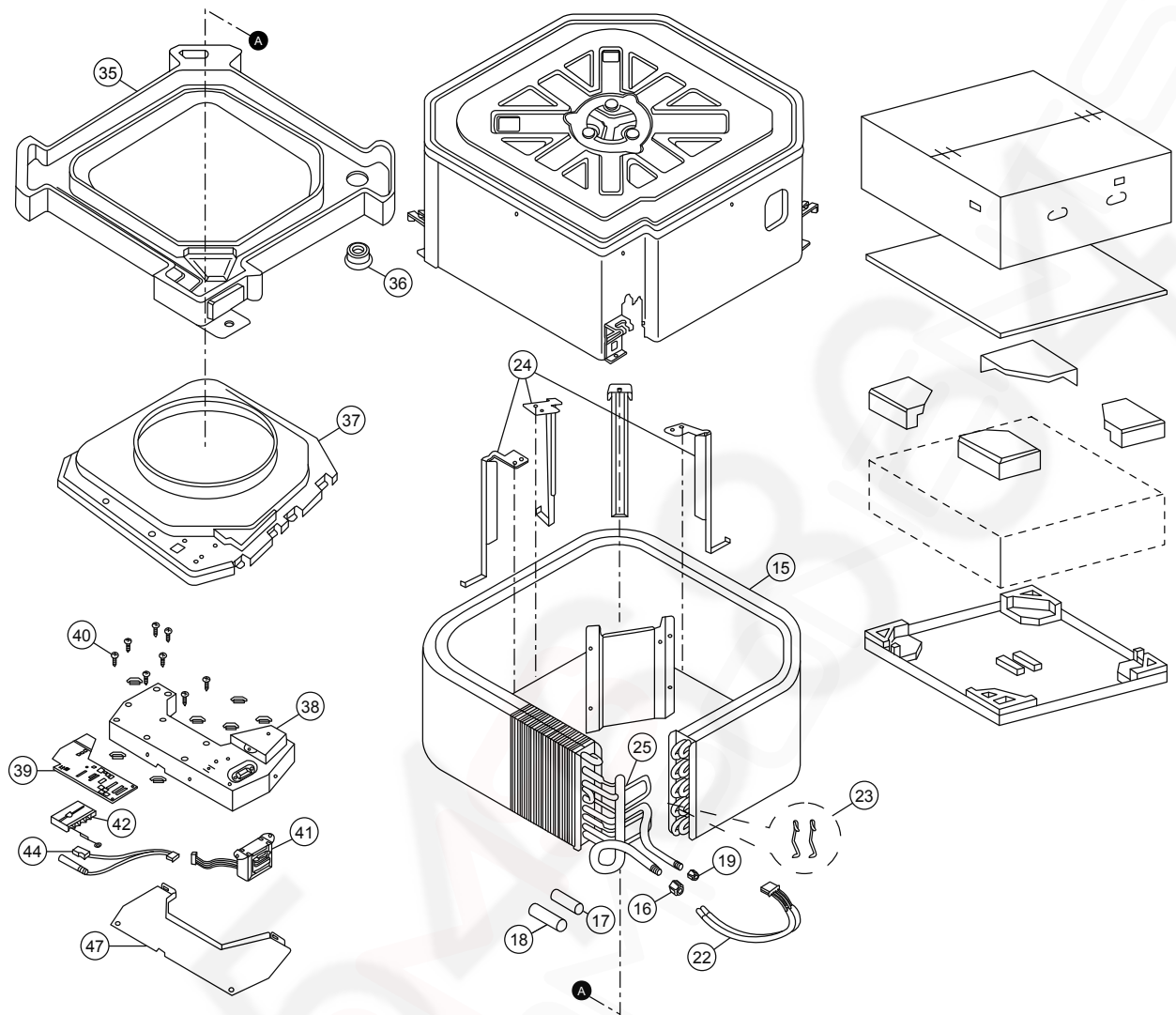
PRECAUTION OF LOW TEMPERATURE

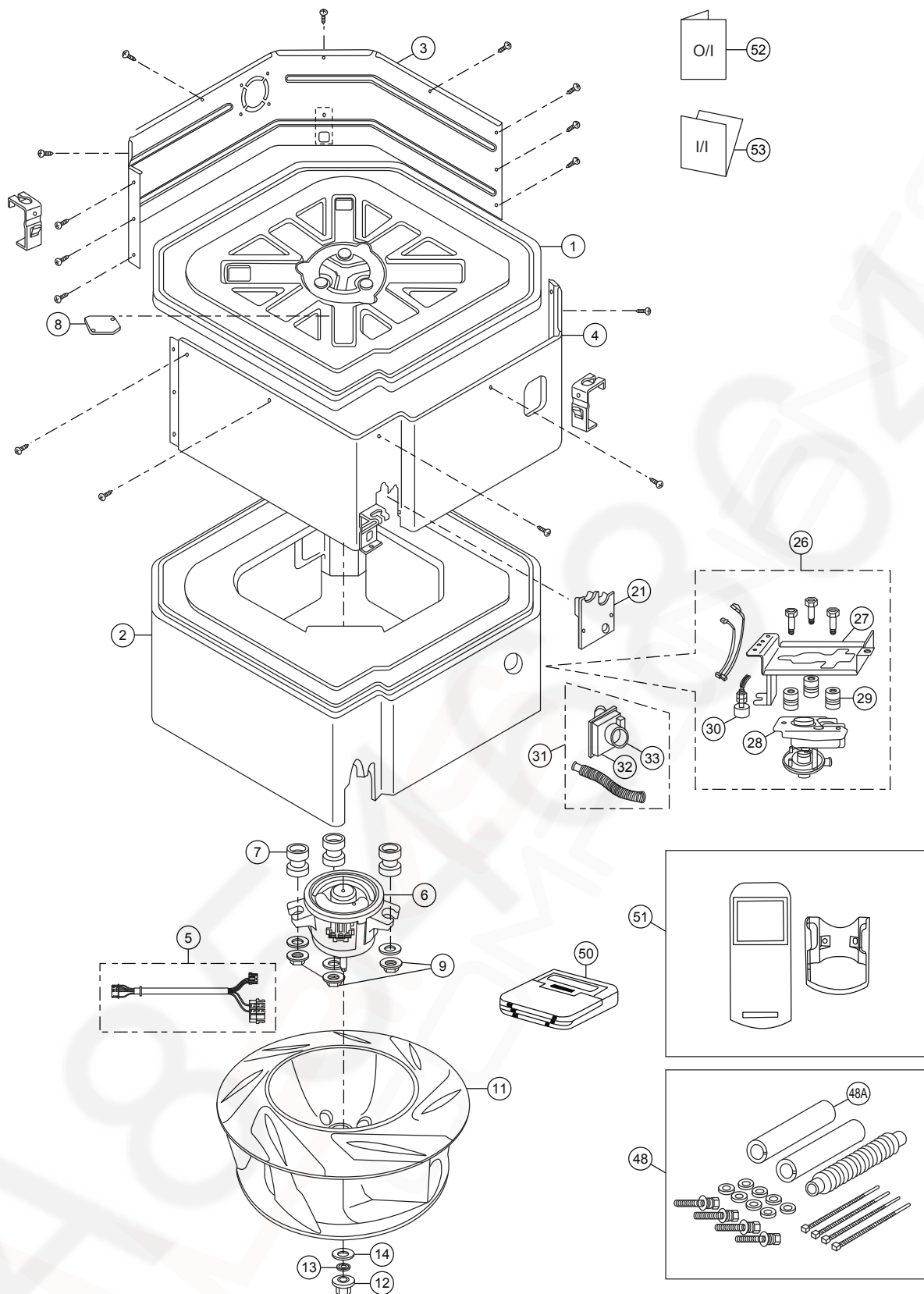
In order to avoid frostbite, be assured of no refrigerant leakage during the installation or repairing of refrigerant circuit.

Panasonic[®]

19. Exploded View and Replacement Parts List

19.1 Indoor Unit





Note:
 The above exploded view is for the purpose of parts disassembly and replacement.
 The non-numbered parts are not kept as standard service parts.

<Model: CS-E9SB4RW>

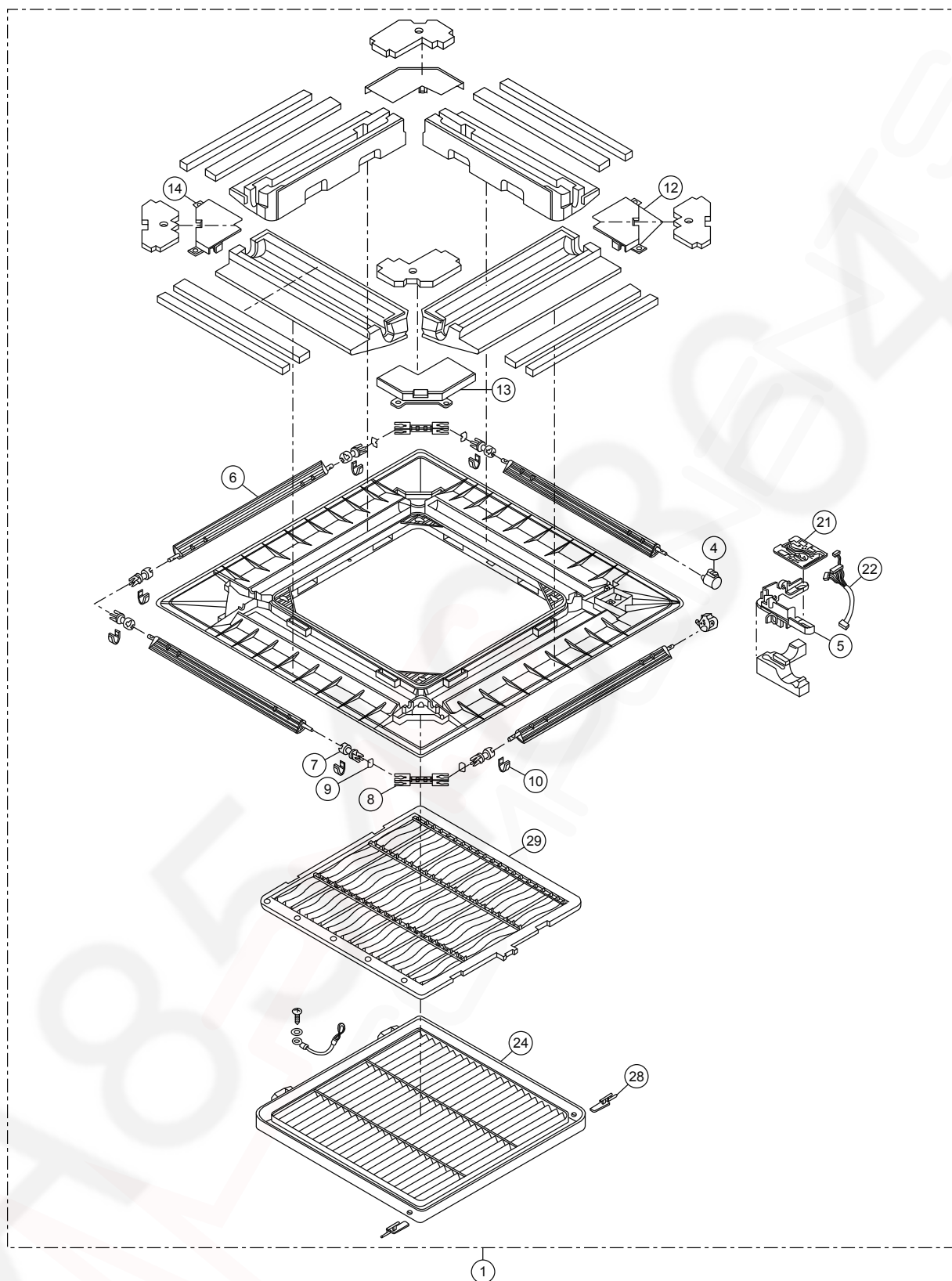
SAFETY	REF. NO.	PART NAME & DESCRIPTION	QTY	CS-E9SB4RW	REMARK
	1	BASE PAN ASS'Y	1	CWD52K1100	
	2	INNER POLYSTYRENE COMPLETE	1	CWG07C1047	
	3	CABINET SIDE PLATE ASS'Y	1	CWE041121	
	4	CABINET SIDE PLATE ASS'Y	1	CWE041122	
	5	LEAD WIRE - FAN MOTOR	1	CWA67C5136	O
⚠	6	FAN MOTOR	1	EHDS50A40AC	O
	7	ANTI - VIBRATION BUSHING	3	CWH501065	
	8	CORD HOLDER	1	CWD741024	
	9	SCREW - FAN MOTOR	3	CWH561058	
	11	TURBO FAN	1	CWH03K1022	
	12	NUT for TURBO FAN	1	CWH561042	
	13	SP WASHER	1	XWA8BFJ	
	14	WASHER	1	XWG8H22FJ	
	15	EVAPORATOR COMPLETE	1	CWB30C4499	
	16	FLARE NUT (3/8")	1	CWT251031	
	17	HEATPROOF TUBE	1	CWG021024	
	18	HEATPROOF TUBE	1	CWG021064	
	19	FLARE NUT (1/4")	1	CWT251030	
	21	PIPE COVER	1	CWD93C1050	
	22	SENSOR - EVAPORATOR	1	CWA50C2549	
	23	HOLDER SENSOR	2	CWH32143	
	24	EVAPORATOR SUPPORTER	3	CWD911529A	
	25	TUBE ASS'Y (CAPIL. TUBE)	1	CWT07K1188	
	26	DRAIN PUMP COMPLETE	1	CWB53C1025	O
	27	PANEL DRAIN PUMP ASS'Y	1	CWD93K1021	
	28	DRAIN PUMP	1	CWB532059	
	29	ANTI - VIBRATION BUSHING	3	CWH501080	
	30	FLOAT SWITCH - DRAIN PUMP	1	CWA121233	O
	31	FLEXIBLE PIPE	1	CWH85C1033	
	32	DRAIN NOZZLE	1	CWH411011	
	33	DRAIN HOSE HEAT INSULATION	1	CWG321050	
	35	DRAIN PAN - COMPLETE	1	CWH40C1034	
	36	DRAIN PLUG	1	CWB821008	
	37	AIR GUIDER BLOWER WHEEL	1	CWD321058	
	38	CONTROL BOARD CASING	1	CWH10K1102	
⚠	39	ELECTRONIC CONTROLLER (MAIN)	1	ACXA73C10380	O
	40	SPACER	6	CWH541026	
	41	TRANSFORMER	1	CWA40C1030	O
⚠	42	TERMINAL BOARD ASS'Y	1	CWA28K1321	O
	44	LEADWIRE-AIR TEMP. SENSOR	1	CWA68C1507	O
	47	CONTROL BOARD COVER COM.	1	CWH13C1343	
	48	ACCESSORY COMPLETE	1	CWH82C1270	
	48A	HEATPROOF TUBE	1	CWG021025	
	50	WIRED REMOTE CONTROL	1	CWA75C3374	
	51	WIRELESS REMOTE CONTROL COMPLETE	1	CWA75C4351	O

SAFETY	REF. NO.	PART NAME & DESCRIPTION	QTY	CS-E9SB4RW	REMARK
	52	OPERATING INSTRUCTION	1	ACXF55-03830	
	53	INSTALLATION INSTRUCTION	1	ACXF60C01760	

(Note)

- All parts are supplied from PAPAMY, Malaysia (Vendor Code: 00029488).
- “O” marked parts are recommended to be kept in stock.

19.2 CZ-BT20E (Front Grille Complete)



Note:

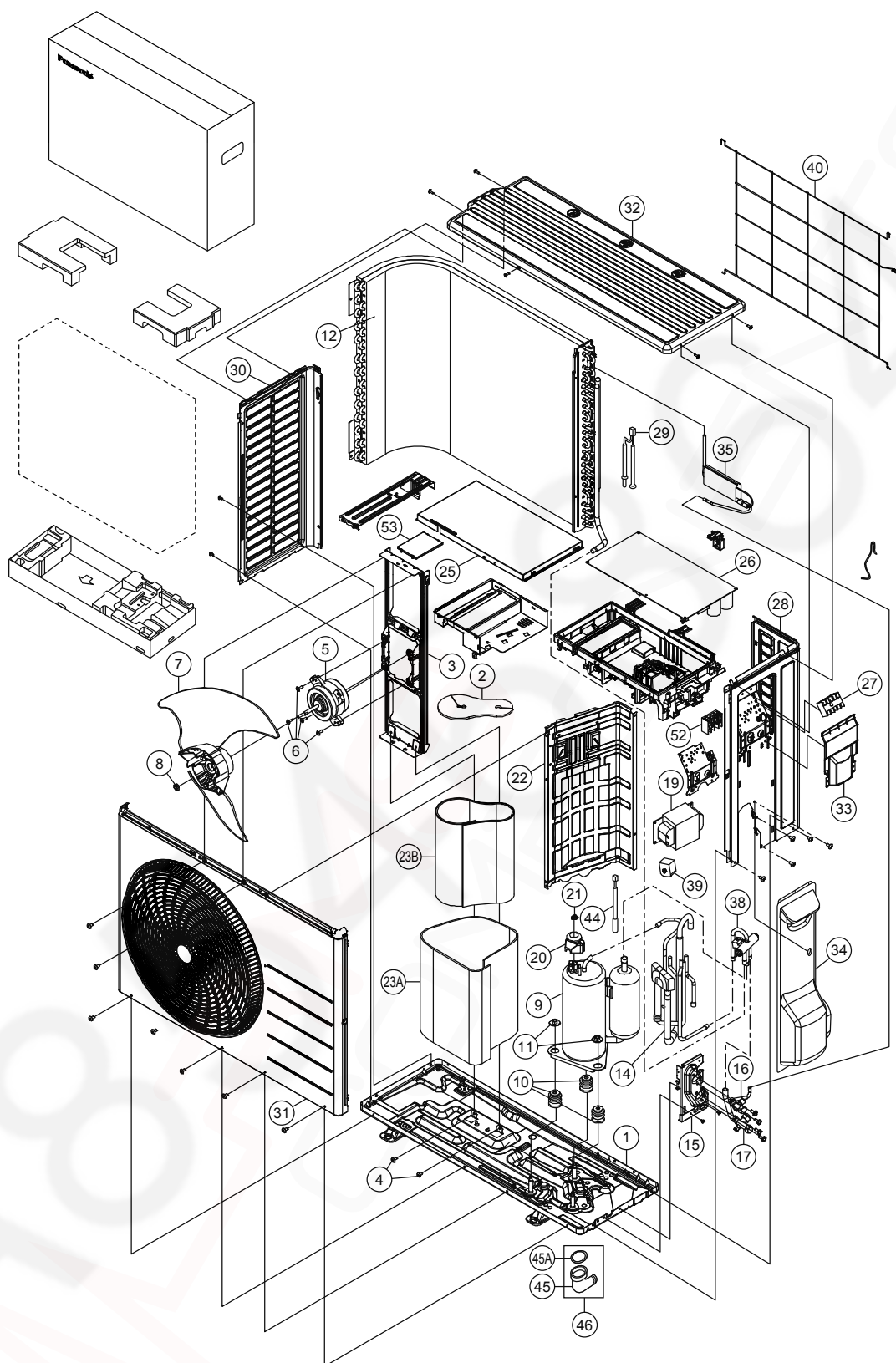
The above exploded view is for the purpose of parts disassembly and replacement.
The non-numbered parts are not kept as standard service parts.

SAFETY	REF. NO.	PART NAME & DESCRIPTION	QTY	CZ-BT20E	REMARK
	1	FRONT GRILLE - COMPLETE	1	CWE11C5990	
	4	A.S MOTOR DC SINGLE 12V 250 OHM	2	CWA981105J	O
	5	BRACKET - A.S.MOTOR	1	CWD932522	
	6	VANE	4	CWE241159	
	7	SHAFT	6	CWH631038	
	8	SHAFT	2	CWH631045	
	9	CONNECTOR - SHAFT	4	CWH081007	
	10	BEARING	6	CWH641008	O
	12	PLATE COVER FOR A.S.MOTOR	1	CWD911459	
	13	PLATE COVER FOR CONNECTING SHAFT	2	CWD911460	
	14	PLATE COVER FOR END SHAFT	1	CWD911461	
	21	ELECTRONIC CONT. (RECEIVER & INDICATOR)	1	CWA747507	
	22	LEAD WIRE - COMPLETE	1	CWA67C5576	
	24	INTAKE GRILLE	1	CWE221131	
	28	LEVER ARM	2	CWH651029	
	29	AIR FILTER	1	CWD001142	O

(Note)

- All parts are supplied from PAPAMY, Malaysia (Vendor Code: 00029488).
- "O" marked parts are recommended to be kept in stock.

19.3 Outdoor Unit



Note:

The above exploded view is for the purpose of parts disassembly and replacement.
The non-numbered parts are not kept as standard service parts.

SAFETY	REF NO.	DESCRIPTION & NAME	QTY.	CU-E9SB4R	REMARK
	1	CHASSIS ASSY	1	CWD52K1277	
	2	SOUND PROOF MATERIAL	1	CWG302719	
	3	FAN MOTOR BRACKET	1	CWD541167	
	4	SCREW - FAN MOTOR BRACKET	2	CWH551217	
⚠	5	FAN MOTOR	1	L6CAYYYL0049	O
	6	SCREW - FAN MOTOR MOUNT	4	CWH55252J	
	7	PROPELLER FAN ASSY	1	CWH03K1066	
	8	NUT - PROPELLER FAN	1	CWH56053J	
⚠	9	COMPRESSOR	1	5RS102XNA21	O
	10	ANTI - VIBRATION BUSHING	3	CWH50077	
	11	NUT - COMPRESSOR MOUNT	3	CWH561096	
	12	CONDENSER	1	CWB32C3218	
	14	DISCHARGE MUFFLER (4-WAY VALVE)	1	CWB121010	
	15	HOLDER - COUPLING	1	CWH351233	
	16	2 WAYS VALVE (LIQUID)	1	CWB021400	O
	17	3 WAYS VALVE (GAS)	1	CWB011581	O
⚠	19	REACTOR	1	G0C193J00002	O
	20	TERMINAL COVER	1	CWH171039A	
	21	NUT-TERMINAL COVER	1	CWH7080300J	
	22	SOUND PROOF BOARD	1	CWH151274	
	23A	SOUND PROOF MATERIAL	1	CWG302949	
	23B	SOUND PROOF MATERIAL	1	CWG302701	
	25	CONTROL BOARD COVER (TOP)	1	CWH131264	
⚠	26	ELECTRONIC CONTROLLER - MAIN	1	ACXA73C10390R	O
⚠	27	TERMINAL BOARD ASSY	1	CWA28K1110J	O
	28	CABINET SIDE PLATE COMPLETE	1	CWE04C1296	
	29	SENSOR COMPLETE (AIR & PIPE TEMP.)	1	CWA50C2893	O
	30	CABINET SIDE PLATE (LEFT)	1	CWE041579A	
	31	CABINET FRONT PLATE CO.	1	CWE06C1360	
	32	CABINET TOP PLATE	1	CWE031148A	
	33	CONTROL BOARD COVER	1	CWH131470	
	34	CONTROL BOARD COVER COMPLETE	1	CWH13C1253	
	35	TUBE COMPLETE (CAP-TUBE)	1	ACXT00C05210	
	38	4 WAYS VALVE	1	CWB001063	O
⚠	39	V-COIL COMPLETE (4-WAYS VALVE)	1	CWA43C2447	O
	40	WIRE NET	1	CWD041166A	
	44	SENSOR COMPLETE (COMP. TEMP.)	1	CWA50C2894	O
	45	DRAIN HOSE	1	CWH5850080	
	45A	PACKING	1	CWB81012	
	46	BAG COMPLETE	1	CWG87C900	
⚠	52	TERMINAL BOARD ASSY	1	CWA28K1281	O
⚠	53	ELECTRONIC CONTROLLER - DEMAND CONTROL	1	CWA747605	O

(NOTE)

- All parts are supplied from PAPAMY, Malaysia (Vendor Code: 00029488).
- "O" marked parts are recommended to be kept in stock.