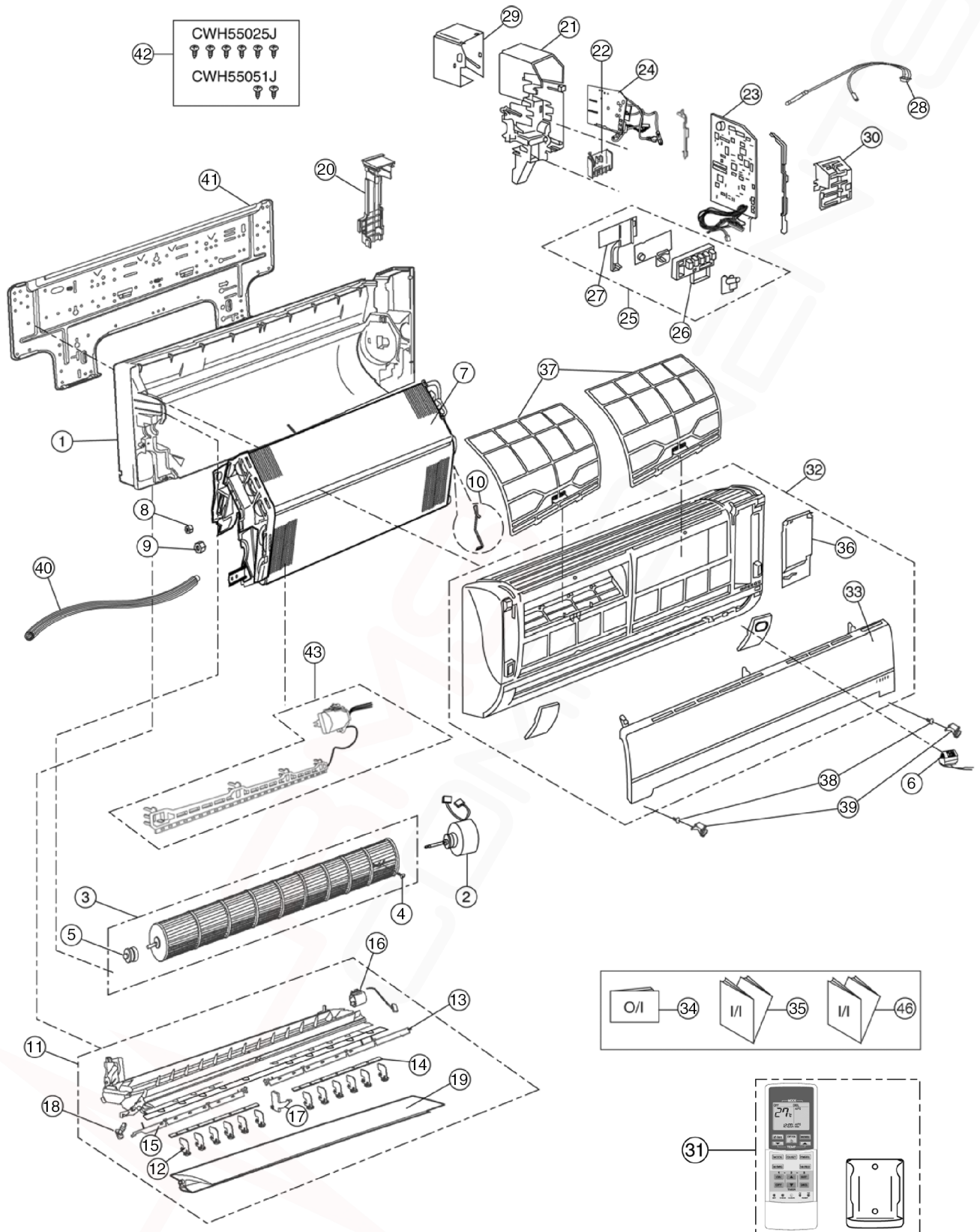


17 Exploded View and Replacement Parts List

17.1. Indoor Unit



Note

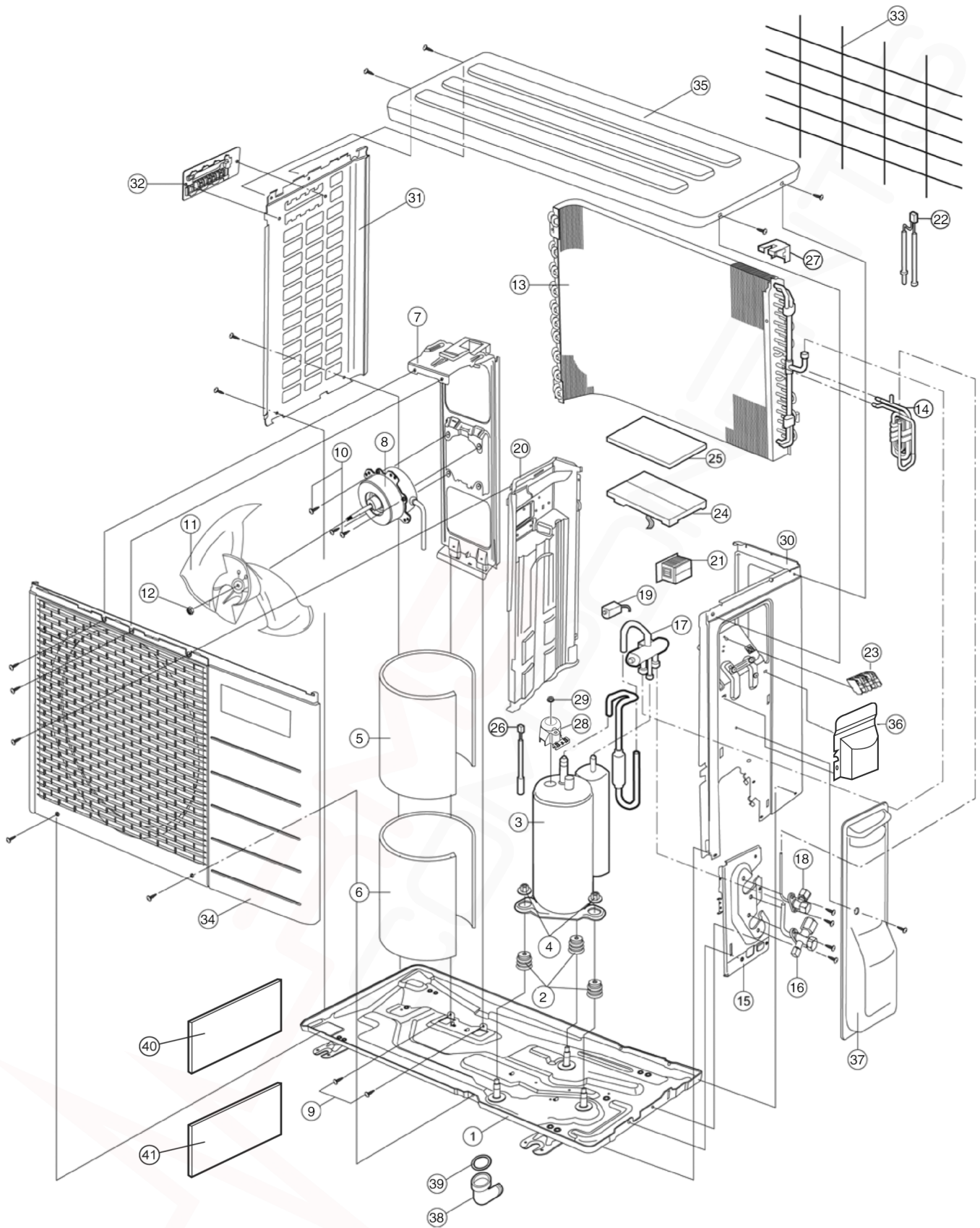
The above exploded view is for the purpose of parts disassembly and replacement.
The non-numbered parts are not kept as standard service parts.

REF. NO.	PART NAME & DESCRIPTION	QTY.	CS-E7HKR	CS-E9HKR	CS-E12HKR	REMARK
1	CHASSY COMPLETE	1	CWD50C1572	←	←	
2	FAN MOTOR, DC 30W 3PH	1	ARW61E8P30AC	←	←	O
3	CROSS-FLOW FAN COMPLETE	1	CWH02C1045	←	←	
4	SCREW - CROSS FLOW FAN	1	CWH551146	←	←	
5	BEARING ASSY	1	CWH64K007	←	←	
6	ION - GENERATOR	1	CWH94C0014	←	←	
7	EVAPORATOR	1	CWB30C2702	CWB30C2704	CWB30C2706	
8	FLARE NUT (1/4)	1	CWT251030	←	←	
9	FLARE NUT (3/8) (1/2)	1	CWT251031	←	CWT251032	
10	INTAKE AIR SENSOR HOLDER	1	CWH32143	←	←	
11	DISCHARGE GRILLE COMPLETE	1	CWE20C2627	←	←	
12	VERTICAL VANE	12	CWE241157	←	←	
13	CONNECTING BAR	1	CWE261092	←	←	
14	CONNECTING BAR	2	CWE261071	←	←	
15	CONNECTING BAR	1	CWE261091	←	←	O
16	A.S.MOTOR, DC SINGLE 12V 300 OHM	1	CWA981091	←	←	
17	FULCRUM	1	CWH621096	←	←	
18	CAP - DRAIN TRAY	1	CWH521096	←	←	
19	HORIZONTAL VANE	1	CWE24C1183	←	←	
20	BACK COVER CHASSIS	1	CWD932454	←	←	
21	CONTROL BOARD CASING	1	CWH102321	←	←	
22	TERMINAL BOARD COMPLETE	1	CWA28C2357	←	←	O
23	ELECTRONIC CONTROLLER - MAIN	1	CWA73C3321	CWA73C3327	CWA73C3329	O
24	ELECTRONIC CONTROLLER - POWER	1	CWA745297	←	←	O
25	INDICATOR COMPLETE	1	CWE39C1168	←	←	O
26	INDICATOR HOLDER	1	CWD932744	←	←	
27	INDICATOR HOLDER	1	CWD932745	←	←	
28	SENSOR COMPLETE	1	CWA50C2401	←	←	O
29	CONTROL BOARD COVER (TOP)	1	CWH131207	←	←	
30	CONTROL BOARD COVER (FRONT)	1	CWH13C1171	←	←	
31	REMOTE CONTROL COMPLETE	1	CWA75C3109	←	←	O
32	FRONT GRILLE COMPLETE	1	CWE11C4074	←	←	O
33	INTAKE GRILLE COMPLETE	1	CWE22C1503	←	←	O
34	OPERATING INSTRUCTION	1	CWF566111	←	←	
35	INSTALLATION INSTRUCTION	1	CWF613474	←	←	
36	GRILLE DOOR COMPLETE	1	CWE14C1010	←	←	←
37	E-ION FILTER	2	CWD00K1008	←	←	←
38	SCREW FOR FRONT GRILLE	2	XTT4+16CFJ	←	←	←
39	CAP FOR FRONT GRILLE	2	CWH521109	←	←	←
40	DRAIN HOSE	1	CWH851063	←	←	←
41	INSTALLING HOLDER ASSY	1	CWH361067	←	←	←
42	BAG COMPLETE FOR INSTALLATION	1	CWH82C067	←	←	←
43	E-ION AIR PURIFYING SYSTEM	1	CWH14C6369	←	←	←

(NOTE)

- All parts are supplied from PHAAM, Malaysia (Vendor Code: 061).
- "O" marked parts are recommended to be kept in stock.

17.2. Outdoor Unit



Note

The above exploded view is for the purpose of parts disassembly and replacement.
The non-numbered parts are not kept as standard service parts.

REF. NO.	PART NAME & DESCRIPTION	QTY.	CU-E7HKR	CU-E9HKR	CU-E12HKR	REMARK
1	CHASSY ASSY	1	CWD50K2073	←	←	
2	ANTI - VIBRATION BUSHING	3	CWH50077	←	←	
3	COMPRESSOR	1	5RS092XCD01	5RS102XBC01	←	O
4	NUT - COMPRESSOR MOUNT	3	CWH56000J	←	←	
5	SOUND PROOF MATERIAL	1	CWG302293	CWG302293 (FOR AUSTRALIA) CWG302314 (FOR NEW ZEALAND ONLY)	CWG302314	
6	SOUND PROOF MATERIAL	1	CWG302292	CWG302292 (FOR AUSTRALIA) CWG302315 (FOR NEW ZEALAND ONLY)	CWG302315	
7	FAN MOTOR BRACKET	1	CWD541089	←	←	
8	FAN MOTOR	1	CWA951536	CWA951553	CWA951542	O
9	SCREW - FAN MOTOR BRACKET	2	CWH551217	CWH551174J	←	
10	SCREW - FAN MOTOR MOUNT	4	CWH55252J	←	←	
11	PROPELLER FAN ASSY	1	CWH03K1010	←	←	
12	NUT - PROPELLER FAN	1	CWH56053J	←	←	
13	CONDENSER	1	CWB32C2445	CWB32C2447	←	
14	TUBE ASS'Y CO.	1	CWT01C4051	CWT01C4383	CWT01C4384	
15	HOLDER - COUPLING	1	CWH351023	←	←	
16	3-WAYS VALVE (GAS)	1	CWB011374	←	CWB011367	
17	4-WAYS VALVE	1	CWB001037J	←	←	
18	2-WAYS VALVE (LIQUID)	1	CWB021301	←	←	
19	V - COIL COMPLETE	1	CWA43C2143J	←	←	O
20	SOUND PROOF BOARD	1	CWH151172	←	←	
21	REACTOR	1	G0C193J00003	←	G0C193J00004	O
22	SENSOR COMPLETE	1	CWA50C2559	←	CWA50C2391	O
23	TERMINAL BOARD ASSY	1	CWA28K1110J	←	←	
24	ELECTRONIC CONTROLLER - MAIN	1	CWA73C3430R	CWA73C3429R	CWA73C3428R	O
25	CONTROL BOARD COVER	1	CWH131264	←	←	
26	SENSOR COMPLETE	1	CWA50C2205	←	←	O
27	HOLDER SENSOR	1	CWH321010	←	←	
28	TERMINAL COVER	1	CWH171039A	←	←	
29	NUT - TERMINAL COVER	1	CWH7080300J	←	←	
30	CABINET SIDE PLATE CO.	1	CWE04C1116	←	←	
31	CABINET SIDE PLATE (LEFT)	1	CWE041248A	←	←	
32	HANDLE	1	CWE161010	←	←	
33	WIRE NET	1	CWD041111A	←	←	
34	CABINET FRONT PLATE CO.	1	CWE06C1039	←	←	
35	CABINET TOP PLATE	1	CWE031014A	←	←	
36	CONTROL BOARD COVER	1	CWH131301	←	←	
37	CONTROL BOARD COVER	1	CWH13C1064	←	←	
38	L - TUBE	1	CWH5850080	←	←	
39	PACKING - L.TUBE	1	CWB81012	←	←	
40	SOUND PROOF MATERIAL	1	—	— (FOR AUSTRALIA) CWG302316 (FOR NEW ZEALAND ONLY)	CWG302316	
41	SOUND PROOF MATERIAL	1	—	— (FOR AUSTRALIA) CWG302317 (FOR NEW ZEALAND ONLY)	CWG302317	

(NOTE)

- All parts are supplied from PHAAM, Malaysia (Vendor Code: 061).
- "O" marked parts are recommended to be kept in stock.