

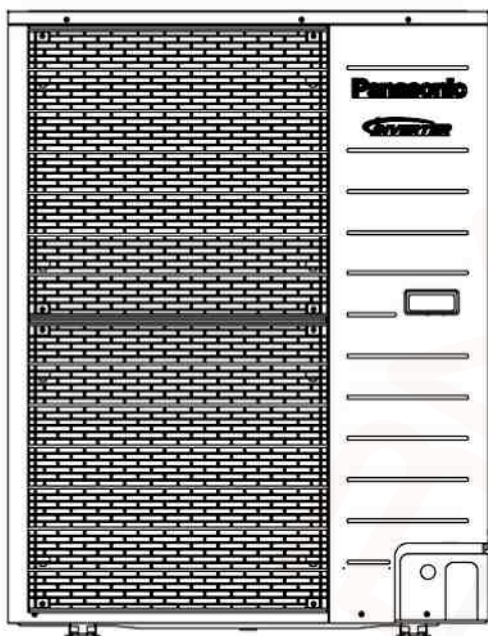
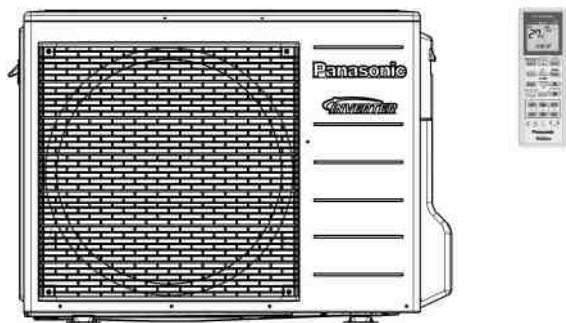
Service Manual

Air Conditioner



Indoor Unit
CS-E24MKR
CS-E28MKR

Outdoor Unit
CU-E24MKR
CU-E28MKR



WARNING

This service information is designed for experienced repair technicians only and is not designed for use by the general public. It does not contain warnings or cautions to advise non-technical individuals of potential dangers in attempting to service a product. Products powered by electricity should be serviced or repaired only by experienced professional technicians. Any attempt to service or repair the products dealt with in this service information by anyone else could result in serious injury or death.

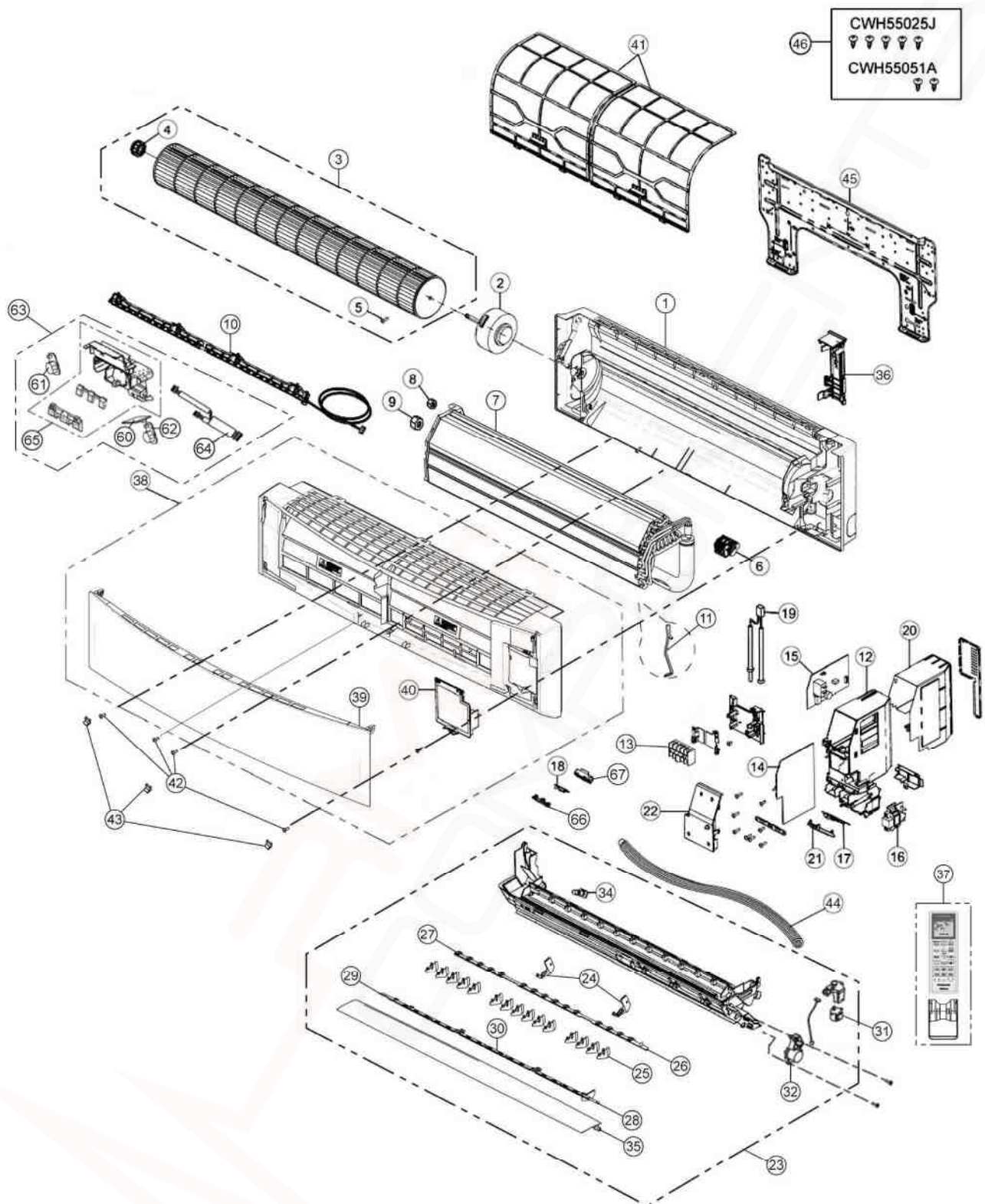


PRECAUTION OF LOW TEMPERATURE

In order to avoid frostbite, be assured of no refrigerant leakage during the installation or repairing of refrigerant circuit.

19. Exploded View and Replacement Parts List

19.1 Indoor Unit



Note

The above exploded view is for the purpose of parts disassembly and replacement.
The non-numbered parts are not kept as standard service parts.

REF. NO.	PART NAME & DESCRIPTION	QTY	CS-E24MKR	CS-E28MKR	REMARK
1	CHASSIS COMPLETE	1	CWD50C1623	←	
2	FAN MOTOR	1	ARW7627AC	←	O
3	CROSS FLOW FAN COMPLETE	1	CWH02C1077	←	
4	BEARING ASS'Y	1	CWH64K007	←	
5	SCREW - CROSS FLOW FAN	1	CWH551146	←	
6	ION GENERATOR	1	CWH94C0028	←	
7	EVAPORATOR	1	CWB30C3724	CWB30C3767	
8	FLARE NUT (LIQUID)	1	CWT251030	←	
9	FLARE NUT (GAS)	1	CWT251033	←	
10	E-ION AIR PURIFYING SYSTEM	1	CWD93C1090	←	
11	HOLDER SENSOR	1	CWH32143	←	
12	CONTROL BOARD CASING	1	CWH102370	←	
13	TERMINAL BOARD COMPLETE	1	CWA28C2357	←	O
14	ELECTRONIC CONTROLLER - MAIN	1	CWA73C6031	CWA73C6070	O
15	ELECTRONIC CONTROLLER - POWER	1	CWA746831	←	O
16	ELECTRONIC CONTROLLER - HVU	1	CWA745348	←	O
17	ELECTRONIC CONTROLLER - INDICATOR	1	CWA746281	←	O
18	ELECTRONIC CONTROLLER - RECEIVER	1	CWA745288	←	O
19	SENSOR COMPLETE	1	CWA50C2401	←	O
20	CONTROL BOARD TOP COVER	1	CWH131350	←	
21	INDICATOR HOLDER	1	CWD933021	←	
22	CONTROL BOARD FRONT COVER	1	CWH13C1183	←	
23	DISCHARGE GRILLE COMPLETE	1	CWE20C3124	←	
24	FULCRUM	2	CWH621103	←	
25	VERTICAL VANE	15	CWE241355	←	
26	CONNECTING BAR	1	CWE261220	←	
27	CONNECTING BAR	1	CWE261158	←	
28	CONNECTING BAR	1	CWE261221	←	
29	CONNECTING BAR	1	CWE261159	←	
30	CONNECTING BAR	1	CWE261160	←	
31	A.S MOTOR, DC SINGLE 12V 300 OHM	1	CWA98K1015	←	O
32	A.S.MOTOR, DC SINGLE 12V 300 OHM	1	CWA981241	←	O
34	CAP - DRAIN TRAY	1	CWH521096	←	
35	HORIZONTAL VANE	1	CWE24C1364	←	
36	BACK COVER CHASSIS	1	CWD933031	←	
37	REMOTE CONTROL COMPLETE	1	CWA75C3826	←	O
38	FRONT GRILLE COMPLETE	1	CWE11C5021	←	O
39	INTAKE GRILLE COMPLETE	1	CWE22C1680	←	
40	GRILLE DOOR	1	CWE14C1029	←	
41	E-ION FILTER	2	CWD00K1017	←	
42	SCREW - FRONT GRILLE	3	XTT4+16CFJ	←	
43	CAP - FRONT GRILLE	3	CWH521194	←	
44	DRAIN HOSE	1	CWH851173	←	
45	INSTALLATION PLATE	1	CWH361098	←	
46	BAG COMPLETE - INSTALLATION SCREW	1	CWH82C1705	←	
60	ELECTRONIC CONTROLLER (COMPARATOR)	1	CWA746205	←	O
61	ELECTRONIC CONTROLLER (ECO SENSOR-L)	1	CWA745791	←	O
62	ELECTRONIC CONTROLLER (ECO SENSOR-R)	1	CWA746206	←	O
63	SENSOR COMPLETE (ECO)	1	CWA50C2759	←	O
64	LEAD WIRE - PCB ECO	1	CWA67C9218	←	
65	CONTROL BOARD CASING FOR PCB ECO	1	CWD93C1108	←	

66	COVER FOR RECEIVER (UPPER)	1	CWD933022	←	
67	COVER FOR RECEIVER (BOTTOM)	1	CWD933209	←	

(Note)

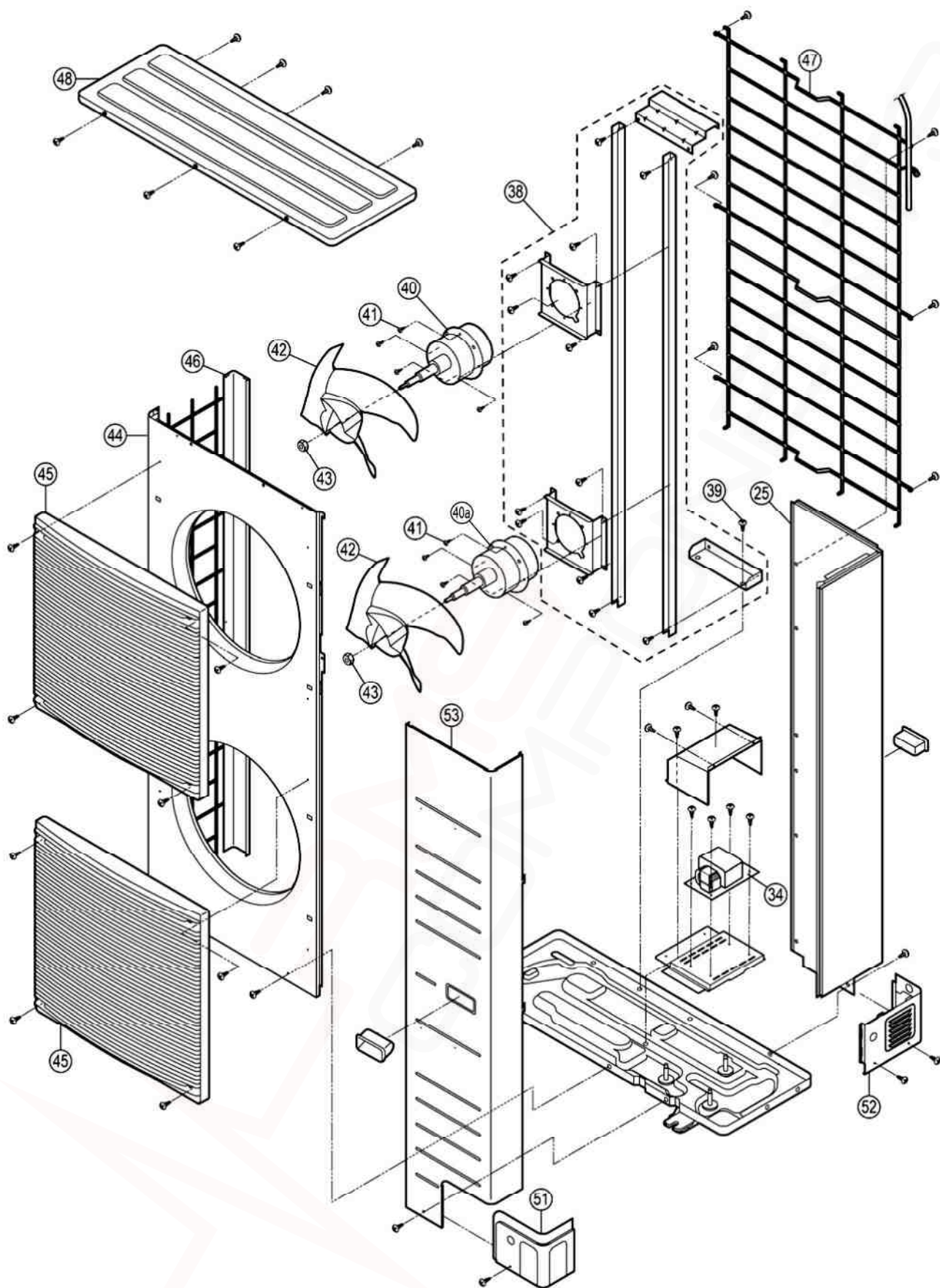
- All parts are supplied from PHAAM, Malaysia (Vendor Code: 00029488).
- “O” marked parts are recommended to be kept in stock.

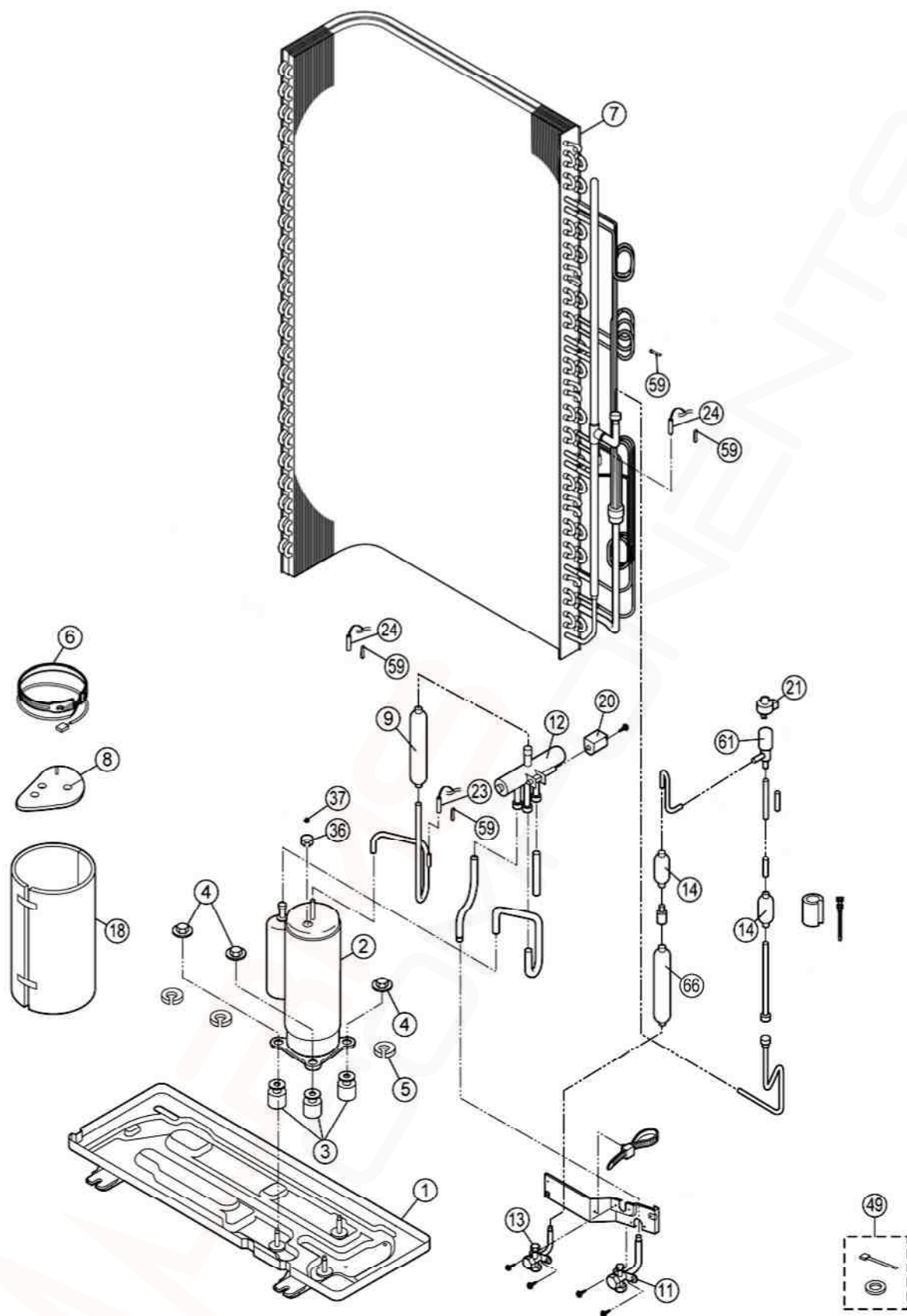
REF. NO.	DESCRIPTION & NAME	QTY	CU-E24MKR	REMARK
1	CHASSIS ASS'Y	1	CWD52K1190	
2	ANTI - VIBRATION BUSHING	3	CWH50055	
3	PACKING	3	CWB81043	
4	COMPRESSOR	1	5KD240XAF21	O
5	NUT - COMPRESSOR MOUNT	3	CWH561049	
9	FAN MOTOR BRACKET	1	CWD541127	
10	FAN MOTOR	1	EHDS80C60AC	O
11	SCREW - FAN MOTOR BRACKET	3	CWH551217	
12	SCREW - FAN MOTOR MOUNT	3	CWH551016J	
13	PROPELLER FAN ASS'Y	1	CWH00K1006	
14	NUT - PROPELLER FAN	1	CWH561038J	
15	CONDENSER COMPLETE	1	CWB32C3295	
16	TUBE ASSY (CAP.TUBE)	1	CWT01C5849	
17	DISCHARGE MUFFLER	1	CWB121013	
21	RECEIVER	1	CWB14030	
22	4 WAYS VALVE	1	CWB001026J	
24	HOLDER - COUPLING	1	CWH351057	
25	3 WAYS VALVE (GAS)	1	CWB011363	O
26	2 WAYS VALVE (LIQUID)	1	CWB021434	O
27	SOUND PROOF BOARD	1	CWH151277	
28	TERMINAL COVER	1	CWH171039A	
29	NUT - TERMINAL COVER	1	CWH7080300J	
30	SENSOR CO.-COMP TEMP	1	CWA50C2656	O
31	HOLDER SENSOR	1	CWH711010	
32	V-COIL COMPLETE	1	CWA43C2169J	
35	SENSOR CO.-AIR AND COND TEMP	1	CWA50C2517	O
36	REACTOR	1	G0C452J00002	
38	TERMINAL BOARD ASSY	1	CWA28K1076J	O
39	TERMINAL BOARD ASSY	1	CWA28K1162	O
40	ELECTRONIC CONTROLLER - MAIN	1	CWA73C6030R	O
41	CONTROL BOARD COVER (TOP)	1	CWH131333	
42	CABINET SIDE PLATE (L)	1	CWE041317A	
43	HANDLE	1	CWE161010	
44	CABINET SIDE PLATE (R)	1	CWE041319A	
46	CABINET FRONT PLATE ASSY	1	CWE06K1063	
47	WIRE NET	1	CWD041128A	
48	CABINET TOP PLATE	1	CWE031083A	
49	CONTROL BOARD COVER (R)	1	CWH13C1185	
51	ACCESSORY CO. (DRAIN ELBOW)	1	CWG87C900	
53	SOUND PROOF MATERIAL	1	CWG302245	
54	SOUND PROOF MATERIAL	1	CWG302246	
56	ELECTRONIC CONT.-NOISE FILTER	1	CWA746792	O
57	TUBE ASSY (CAP.TUBE & RECEIVER)	1	CWT01C5851	
58	ELECTRONIC CONT - DEMAND CONTROL	1	CWH14C8772	O
59	TERMINAL BOARD ASSY	1	CWA28K1242	O
60	CRANKCASE HEATER	1	CWA341047	
61	OPERATING INSTRUCTION	1	CWF568133	
62	INSTALLATION INSTRUCTION	1	CWF614915	
63	CONTROL BOARD CASING (SIDE)	1	CWH102454	

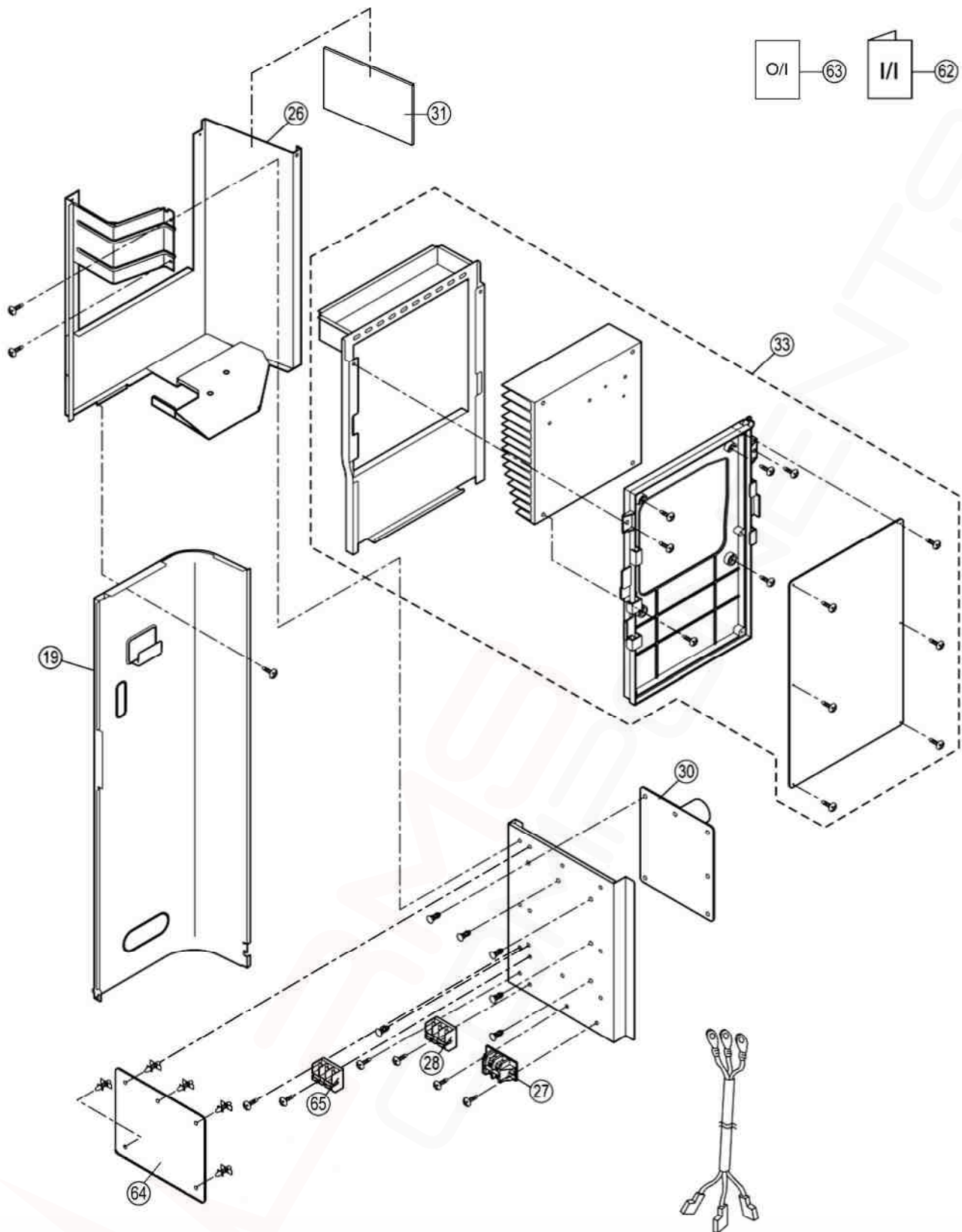
(Note)

- All parts are supplied from PHAAM, Malaysia (Vendor Code: 00029488).
- "O" marked parts are recommended to be kept in stock.

19.2.2 CU-E28MKR







Note

The above exploded view is for the purpose of parts disassembly and replacement.
The non-numbered parts are not kept as standard service parts.

REF. NO.	DESCRIPTION & NAME	QTY	CU-E28MKR	REMARK
1	BASE PAN ASS'Y	1	CWD52K1295	
2	COMPRESSOR	1	5KD240XAF21	O
3	ANTI - VIBRATION BUSHING	3	CWH50055	
4	NUT - COMPRESSOR MOUNT	3	CWH561049	
5	PACKING	3	CWB811017	
6	CRANKCASE HEATER	1	CWA341080	
7	CONDENSER COMPLETE	1	CWB32C3300	
8	SOUND PROOF MATERIAL	1	CWG302246	
9	DISCHARGE MUFFLER	1	CWB121013	
11	3 WAYS VALVE (GAS)	1	CWB011251	O
12	4 WAYS VALVE	1	CWB001026J	
13	2 WAYS VALVE (LIQUID)	1	CWB021330	O
14	STRAINER	1	CWB111032	
18	SOUND PROOF MATERIAL	1	CWG302245	
19	SOUND PROOF BOARD	1	CWH151294	
20	V-COIL COMPLETE	1	CWA43C2169J	
21	V-COIL COMPLETE	1	CWA43C2128J	
23	SENSOR CO.-COMP (DISCHARGE)	1	CWA50C2656	O
24	SENSOR CO.-AIR AND COND TEMP	1	CWA50C2652	O
25	CABINET REAR PLATE - COMPLETE	1	CWE02C1043	
26	CONTROL BOARD CASING	1	CWH10K1158	
27	TERMINAL BOARD ASSY	1	CWA28K1162	O
28	TERMINAL BOARD ASSY	1	CWA28K1076J	O
30	ELECTRONIC CONTROLLER - CAPACITOR	1	CWA746775	O
31	ELECTRONIC CONTROLLER - NOISE FILTER	1	CWA746758	O
33	ELECTRONIC CONTROLLER - MAIN	1	CWA73C5971R	O
34	REACTOR	1	G0C452J00002	
36	TERMINAL COVER	1	CWH171039A	
37	NUT - TERMINAL COVER	1	CWH7080300J	
38	FAN MOTOR BRACKET	1	CWD54K1063	
39	SCREW - FAN MOTOR BRACKET	2	CWH551040J	
40	FAN MOTOR (UPPER)	1	L6CBYYL0084	O
40a	FAN MOTOR (BOTTOM)	1	L6CBYYL0085	O
41	SCREW - FAN MOTOR MOUNT	8	CWH551016J	
42	PROPELLER FAN ASS'Y	2	CWH03K1016	
43	NUT - PROPELLER FAN	2	CWH56053J	
44	CABINET FRONT PLATE ASSY	1	CWE061092A	
45	DISCHARGE GRILLE	2	CWE201075	
46	CABINET SIDE PLATE ASS'Y	1	CWE04K1022A	
47	WIRE NET	1	CWD041129A	
48	CABINET TOP PLATE	1	CWE03C1095	
49	ACCESSORY CO.(DRAIN ELBOW)	1	CWG87C900	
51	L-SHAPED PLATE (FRONT)	1	CWD601074A	
52	L-SHAPED PLATE (BACK)	1	CWD601075A	
53	CABINET FRONT PLATE-COMPLETE	1	CWE06C1224	
59	HOLDER SENSOR	3	CWH711010	
61	EXP. VALVE	1	CWB051018J	
62	INSTALLATION INSTRUCTION	1	CWF615015	
63	OPERATING INSTRUCTION	1	CWF568133	
64	ELECTRONIC CONT - DEMAND CONTROL	1	CWA746558	O

65	TERMINAL BOARD ASSY	1	CWA28K1242	O
66	RECEIVER	1	CWB14017	

(Note)

- All parts are supplied from PHAAM, Malaysia (Vendor Code: 00029488).
- “O” marked parts are recommended to be kept in stock.