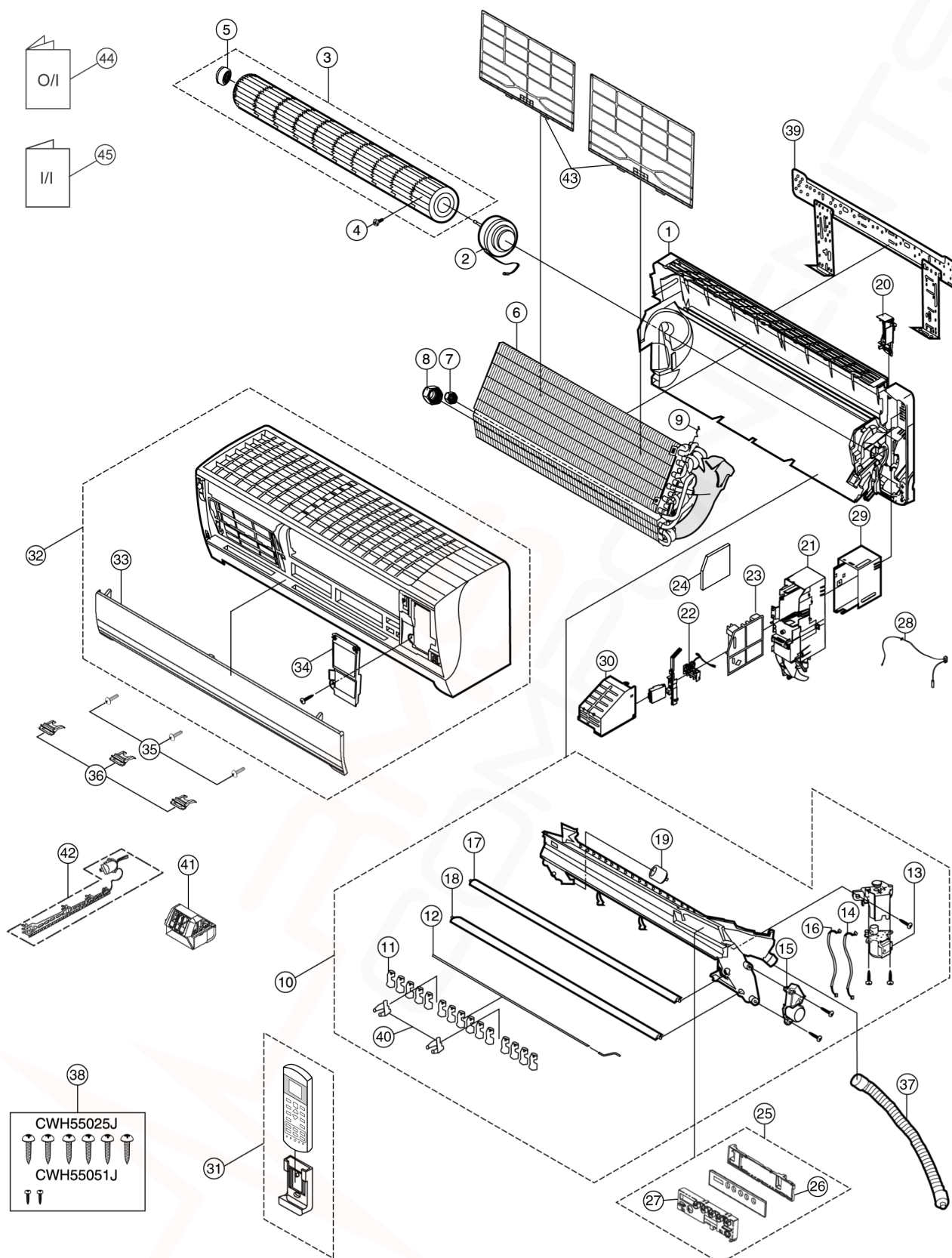


17 Exploded View and Replacement Parts List

17.1. CS-E18HKR CS-E21HKR CS-E24HKR CS-E28HKR



Note:

The above exploded view is for the purpose of parts disassembly and replacement.
The non-numbered parts are not kept as standard service parts.

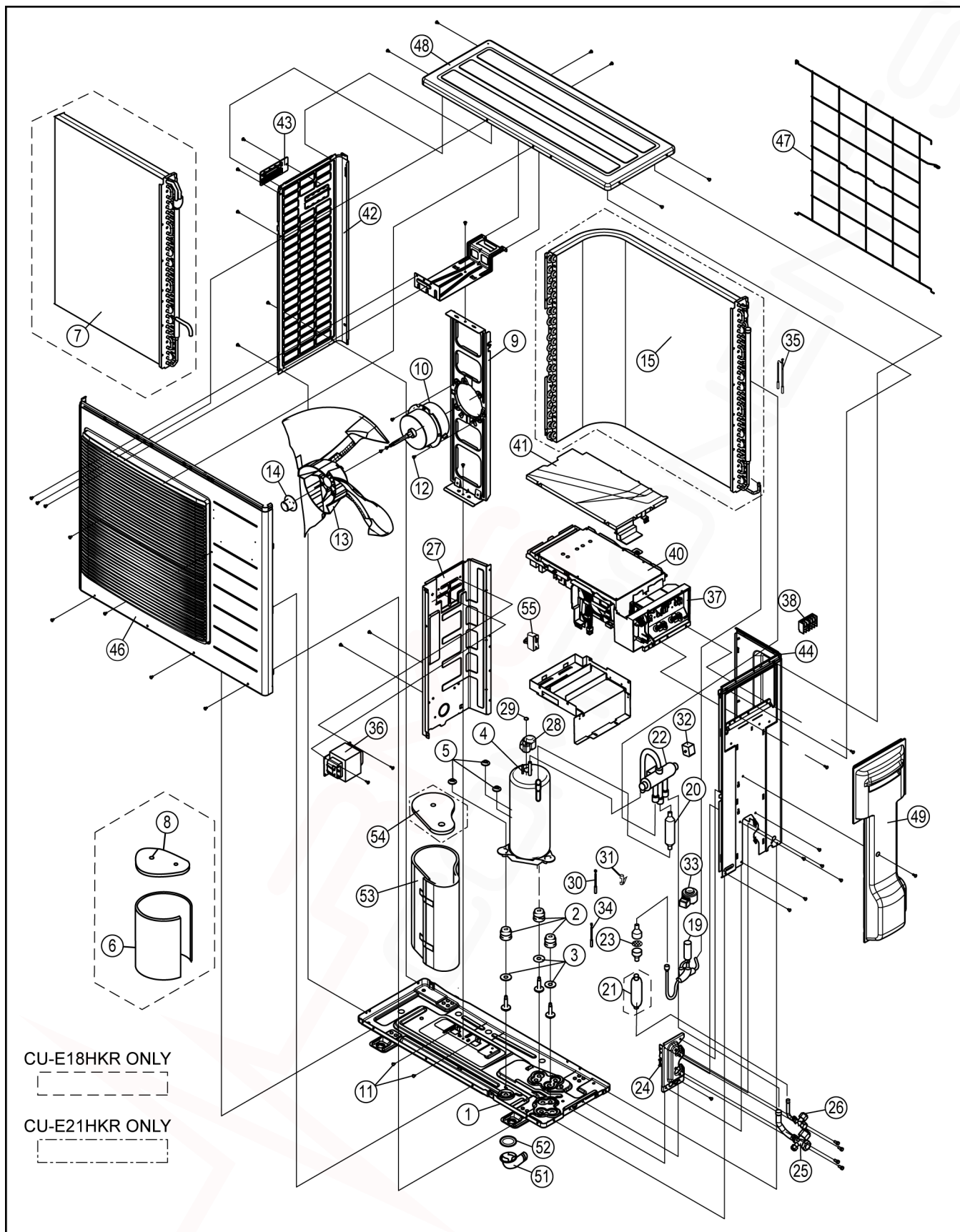
<Model: CS-E18HKR, CS-E21HKR, CS-E24HKR, CS-E28HKR>

REF NO.	PART NAME & DESCRIPTION	QTY.	CS-E18HKR	CS-E21HKR	CS-E24HKR	CS-E28HKR	REMARKS
1	CHASSY COMPLETE	1	CWD50C1520	←	←	←	
2	FAN MOTOR, DC 30W 3PH, L6CBYYL0011	1	L6CBYYL0011	ARW51H8P30AC	←	←	O
3	CROSS FLOW FAN COMPLETE	1	CWH02C1010	←	←	←	
4	SCREW - CROSS FLOW FAN	1	CWH551146	←	←	←	
5	BEARING ASSY	1	CWH64K007	←	←	←	
6	EVAPORATOR	1	CWB30C2709	CWB30C2296	CWB30C2710	←	
7	FLARE NUT (1/4)	1	CWT251030	←	←	←	
8	FLARE NUT (1/2) (5/8)	1	CWT251032	←	CWT251033	←	
9	HOLDER SENSOR	1	CWH32143	←	←	←	
10	DISCHARGE GRILLE COMPLETE	1	CWE20C2735	←	←	←	
11	VERTICAL VANE	15	CWE241088	←	←	←	
12	CONNECTING BAR	1	CWE261025	←	←	←	
13	A.S.MOTOR, DC SINGLE 12V 300OHM	1	CWA98260+MJ	←	←	←	O
14	LEAD WIRE - AIR SWING MOTOR	1	CWA67C3849	←	←	←	
15	A.S.MOTOR, DC SINGLE 12V 300OHM"	1	CWA98K1009	←	←	←	
17	HORIZONTAL VANE	1	CWE241152C	←	←	←	
18	HORIZONTAL VANE	1	CWE241153C	←	←	←	
19	CAP - DRAIN TRAY	1	CWH521096	←	←	←	
20	BACK COVER CHASSIS	1	CWD932162B	←	←	←	
21	CONTROL BOARD CASING	1	CWH102334	←	←	←	
22	TERMINAL BOARD COMPLETE	1	CWA28C2357	←	←	←	O
23	ELECTRONIC CONTROLLER - MAIN	1	CWA75C3331	CWA75C3332	CWA75C3333	CWA75C3334	O
24	ELECTRONIC CONTROLLER - POWER	1	CWA745293	←	CWA745294	←	O
25	INDICATOR COMPLETE	1	CWE39C1174	←	←	←	O
26	INDICATOR HOLDER	1	CWD932817	←	←	←	
27	INDICATOR HOLDER	1	CWD932818	←	←	←	
28	SENSOR COMPLETE	1	CWA50C2122	←	←	←	
29	CONTROL BOARD TOP COVER	1	CWH131209	←	←	←	
30	CONTROL BOARD FRONT COVER	1	CWH131210	←	←	←	
31	REMOTE CONTROL COMPLETE	1	CWA75C3111	←	←	←	O
32	FRONT GRILLE COMPLETE	1	CWE11C3898	←	←	←	O
33	INTAKE GRILLE COMPLETE	1	CWE22C1423	←	←	←	
34	GRILLE DOOR	1	CWE141076	←	←	←	
35	SCREW - FRONT GRILLE	3	XTT4+16CFJ	←	←	←	
36	CAP - FRONT GRILLE	3	CWH521062A	←	←	←	
37	DRAIN HOSE	1	CWH851063	←	←	←	
38	BAG COMPLETE - INSTALLATION SCREW	1	CWH82C067	←	←	←	
39	INSTALLATION PLATE	1	CWH36K1007	←	←	←	
40	FULCRUM	2	CWH621047	←	←	←	
41	ION-GENERATOR	1	CWH94C0014	←	←	←	
42	E-ION AIR PURIFYING SYSTEM	1	CWH14C6449	←	←	←	O
43	E-ION FILTER	2	CWD00K1011	←	←	←	O
44	OPERATING INSTRUCTION	1	CWF566113	←	←	←	
45	INSTALLATION INSTRUCTION	1	CWF613476	←	CWF613477	←	

(Note)

- All parts are supplied from PHAAM, Malaysia (Vendor Code: 061).
- "O" marked parts are recommended to be kept in stock.

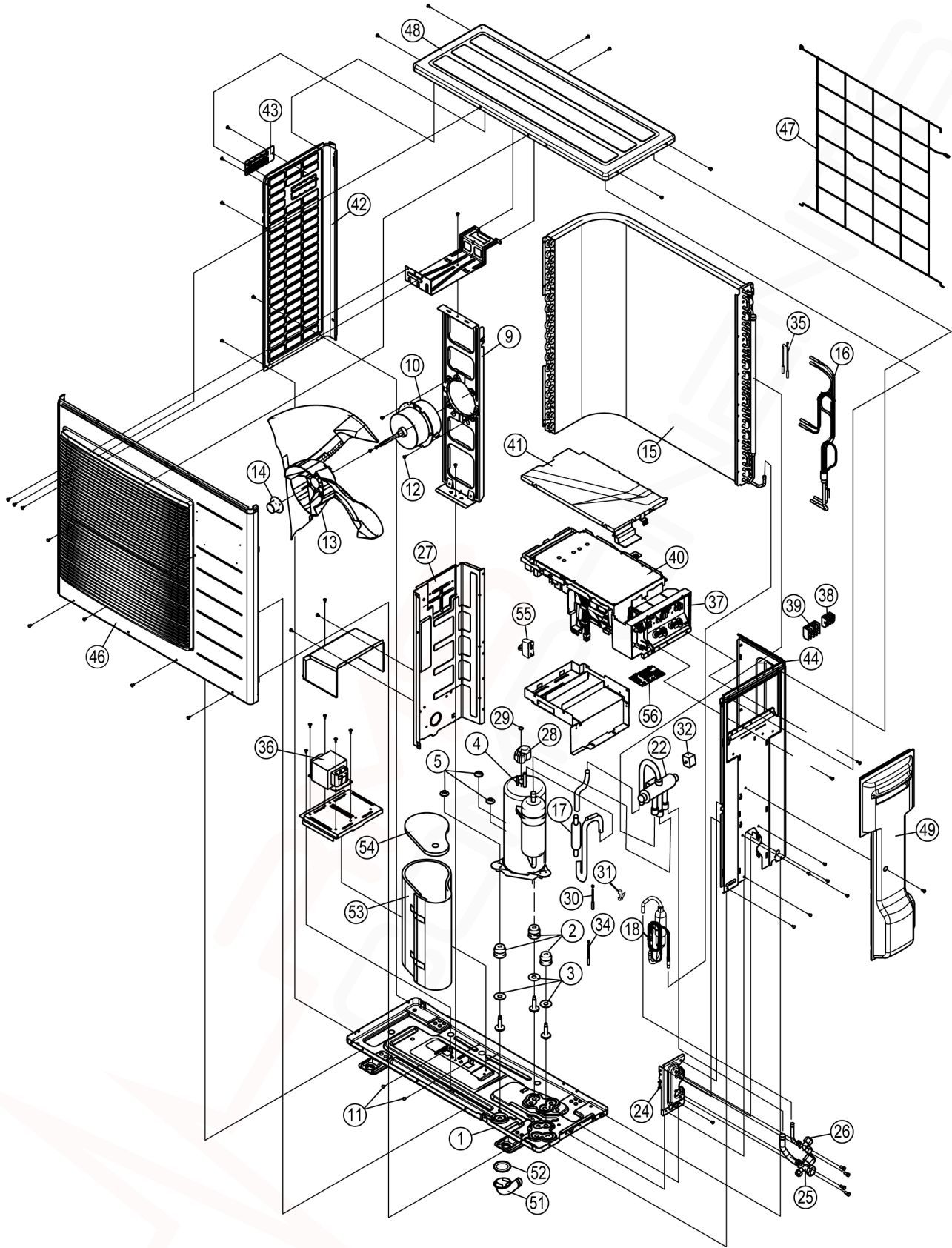
17.2. Outdoor Unit CU-E18HKR CU-21HKR



Note:

The above exploded view is for the purpose of parts disassembly and replacement.
The non-numbered parts are not kept as standard service parts.

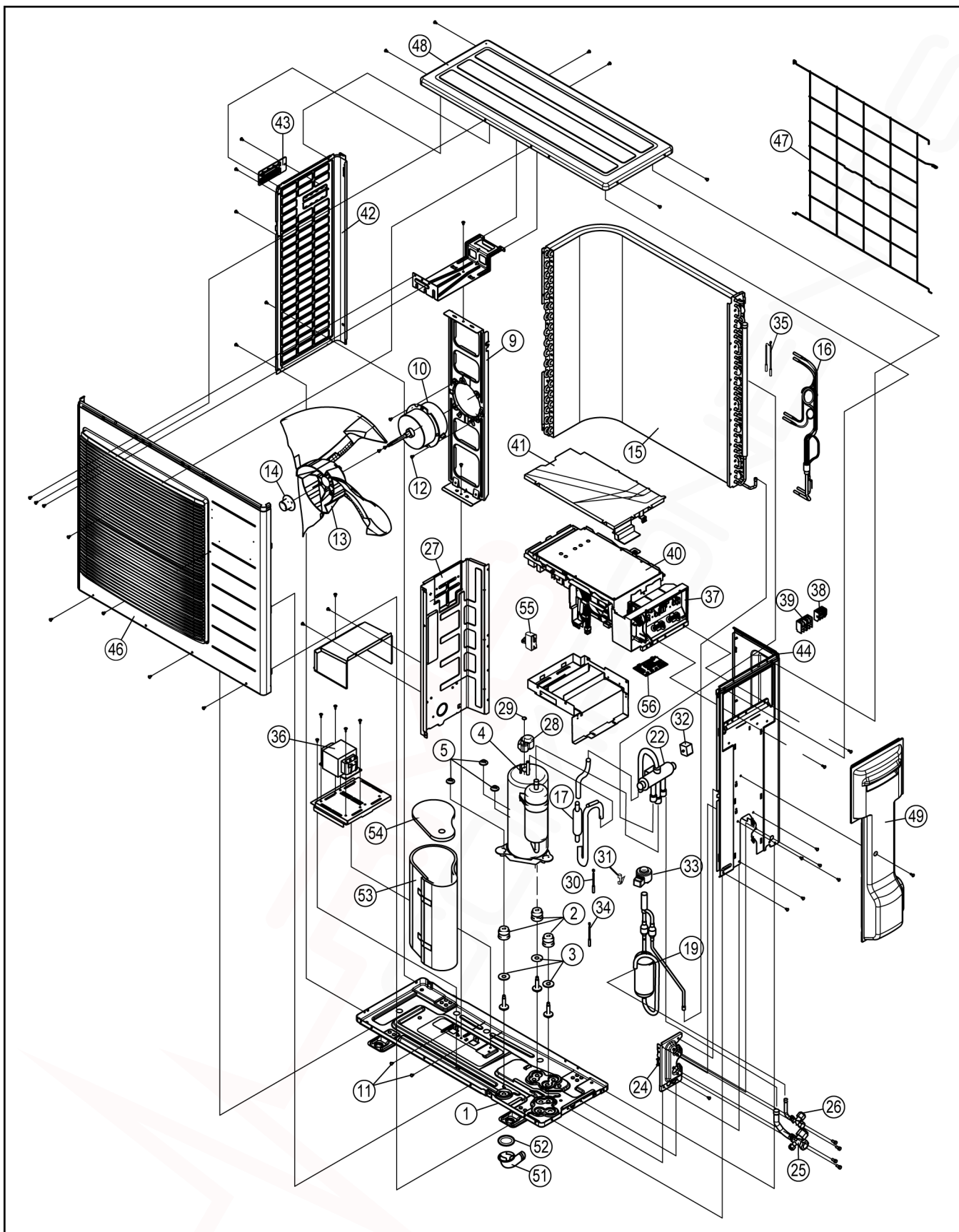
CU-E24HKR



Note:

The above exploded view is for the purpose of parts disassembly and replacement.
The non-numbered parts are not kept as standard service parts.

CU-E28HKR



Note:

The above exploded view is for the purpose of parts disassembly and replacement.
The non-numbered parts are not kept as standard service parts.

<Model: CU-E18HKR, CU-E21HKR, CU-E24HKR, CU-E28HKR>

REF. NO.	DESCRIPTION & NAME	QTY.	CU-E18HKR	CU-E21HKR	CU-E24HKR	CU-E28HKR	REMARK
1	CHASSY ASS'Y	1	CWD52K1191	←	CWD52K1190	←	
2	ANTI - VIBRATION BUSHING	3	CWH50077	←	CWH50055	←	
3	PACKING	3	—	—	CWB81043	CWB81043	
4	COMPRESSOR	1	5CS130XAD04	←	5KD240XAF21	←	O
5	NUT - COMPRESSOR MOUNT	3	CWH56000J	←	CWH561049	←	
6	SOUND PROOF MATERIAL	1	CWG302302	—	—	—	
7	CONDENSER COMPLETE	1	CWB32C2442	—	—	—	
8	SOUND PROOF MATERIAL	1	CWG302503	—	—	—	
9	FAN MOTOR BRACKET	1	CWD541126	←	←	←	
10	FAN MOTOR DC 40W 3PH	1	CWA951620	←	CWA951636	CWA951637	O
11	SCREW - FAN MOTOR BRACKET	3	CWH551217	←	←	←	
12	SCREW - FAN MOTOR MOUNT	3	CWH551040J	←	←	←	
13	PROPELLER FAN ASS'Y	1	CWH001019	←	←	←	
14	NUT - PROPELLER FAN	1	CWH561038J	←	←	←	
15	CONDENSER COMPLETE	1	—	CWB32C2441	CWB32C2440	CWB32C2435	
16	TUBE ASSY (CAP.TUBE)	1	—	—	CWT01C4686	CWT01C4685	
17	DISCHARGE MUFFLER	1	—	—	CWB121013	←	
18	TUBE ASSY (CAP.TUBE&RECEIVER)	1	—	—	CWT01C4733	—	
19	TUBE ASS'Y (EXP. VALVE)	1	CWT025759	←	—	CWT025743	
20	ACCUMULATOR	1	CWB131024	←	—	—	
21	RECEIVER	1	CWB14011	—	—	—	
22	4 WAYS VALVE	1	CWB001026J	←	←	←	O
23	STRAINER	1	CWB11094	←	—	—	
24	HOLDER - COUPLING	1	CWH351056	←	CWH351057	←	
25	3 WAYS VALVE (GAS)	1	CWB011338	←	CWB011363	←	O
26	2 WAYS VALVE (LIQUID)	1	CWB021292	←	CWB021434	←	O
27	SOUND PROOF BOARD	1	CWH151198	←	CWH151197	←	
28	TERMINAL COVER	1	CWH171039A	←	←	←	
29	NUT - TERMINAL COVER	1	CWH7080300J	←	←	←	
30	SENSOR COMPLETE (COMP. TOP)	1	CWA50C2185	←	←	←	
31	HOLDER SENSOR	1	CWH32074	←	CWH711010	←	
32	V-COIL COMPLETE	1	CWA43C2169J	←	←	←	
33	V-COIL COMPLETE FOR EXP.VALVE	1	CWA43C2257	←	—	CWA43C2258	
34	SENSOR CO (COMP.DISCHARGE)	1	CWA50C2515	←	←	←	
35	SENSOR COMPLETE	1	CWA50C2517	←	←	←	
36	REACTOR	1	G0C153J00007	←	G0C452J00002	←	
37	CONTROL BOARD CASING (SIDE)	1	CWH102362	←	CWH102361	←	
38	TERMINAL BOARD ASSY	1	CWA28K1110J	←	CWA28K1076J	←	O
39	TERMINAL BOARD ASSY	1	—	—	CWA28K1162	←	O
40	ELECTRONIC CONTROLLER - MAIN	1	CWA73C3323R	CWA73C3324R	CWA73C3325R	CWA73C3326R	O
41	CONTROL BOARD COVER (TOP)	1	CWH131333	←	←	←	
42	CABINET SIDE PLATE(L)	1	CWE041320A	CWE041317A	←	←	
43	HANDLE	1	CWE161010	←	←	←	
44	CABINET SIDE PLATE (R)	1	CWE041318A	←	CWE041319A	←	
46	CABINET FRONT PLATE ASSY	1	CWE06K1062	←	CWE06K1063	←	
47	WIRE NET	1	CWD041128A	←	←	←	
48	CABINET TOP PLATE	1	CWE031083A	←	←	←	
49	CONTROL BOARD COVER (R)	1	CWH13C1185	←	←	←	
51	DRAIN HOSE	1	CWH5850080	←	←	←	
52	PACKING - L.TUBE	1	CWB81012	←	←	←	
53	SOUND PROOF MATERIAL	1	CWG302245	CWG302270	CWG302245	←	
54	SOUND PROOF MATERIAL	1	—	CWG302300	CWG302246	←	
55	CAPACITOR-FM (3.5MF/460V)	1	DS461355QP-A	←	DS461305QP-A	DS461355QP-A	
56	ELECTRONIC CONTROLLER	1	—	—	CWA745133	←	

(Note)

- All parts are supplied from PHAAM, Malaysia (Vendor Code: 061).
- "O" marked parts are recommended to be kept in stock.