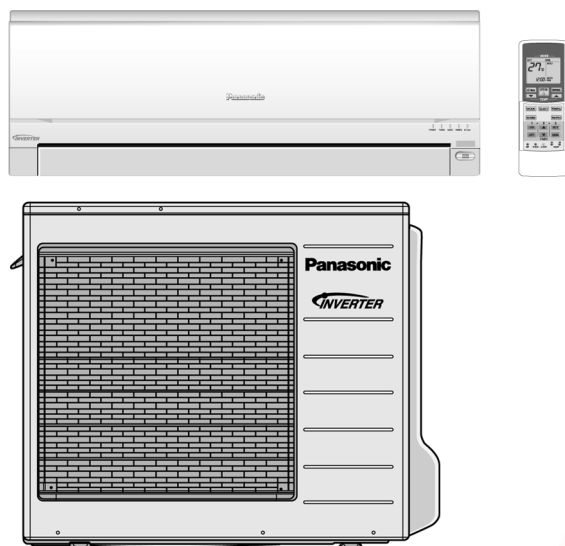


# Service Manual

Air Conditioner

CS-E15HKR CU-E15HKR



## ⚠ WARNING

This service information is designed for experienced repair technicians only and is not designed for use by the general public. It does not contain warnings or cautions to advise non-technical individuals of potential dangers in attempting to service a product. Products powered by electricity should be serviced or repaired only by experienced professional technicians. Any attempt to service or repair the product or products dealt with in this service information by anyone else could result in serious injury or death.

## ⚠ PRECAUTION OF LOW TEMPERATURE

In order to avoid frostbite, be assured of no refrigerant leakage during the installation or repairing of refrigeration circuit.

## TABLE OF CONTENTS

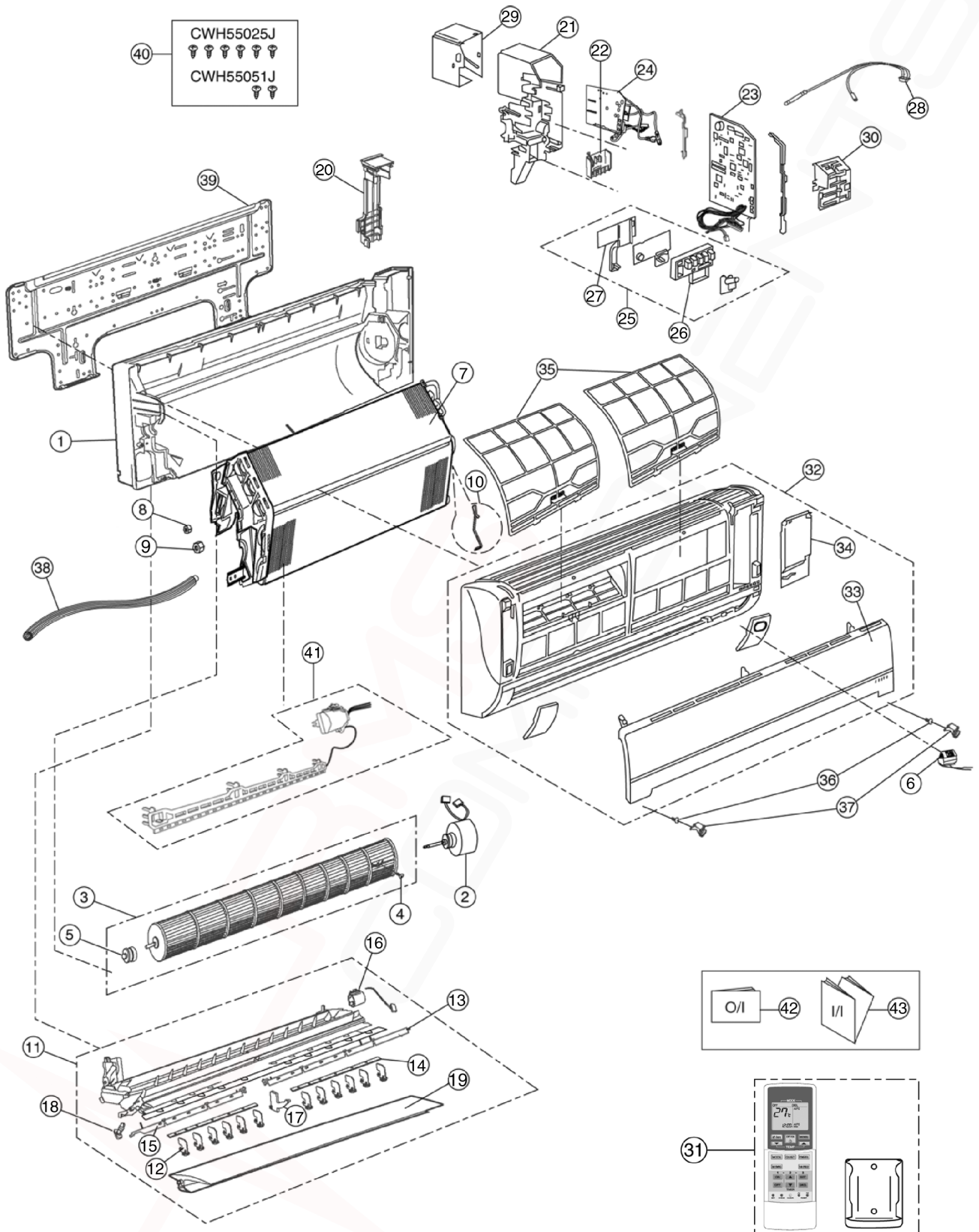
	PAGE		PAGE
<b>1 Safety Precautions</b> .....	<b>3</b>	9.2. Outdoor Unit.....	16
<b>2 Specifications</b> .....	<b>5</b>	<b>10 Printed Circuit Board</b> .....	<b>17</b>
2.1. CS-E15HKR CU-E15HKR.....	5	10.1. Indoor Unit.....	17
<b>3 Features</b> .....	<b>7</b>	10.2. Outdoor Unit.....	19
<b>4 Location of Controls and Components</b> .....	<b>8</b>	<b>11 Installation Instruction</b> .....	<b>20</b>
4.1. Product Overview.....	8	11.1. Select The Best Location .....	20
<b>5 Dimensions</b> .....	<b>9</b>	11.2. Indoor/Outdoor Unit Installation Diagram .....	20
5.1. Indoor Unit.....	9	11.3. Indoor Unit.....	21
5.2. Outdoor Unit .....	10	11.4. Outdoor Unit.....	24
<b>6 Refrigeration Cycle Diagram</b> .....	<b>11</b>	<b>12 Operation and Control</b> .....	<b>27</b>
<b>7 Block Diagram</b> .....	<b>12</b>	12.1. Basic Function .....	27
<b>8 Wiring Connection Diagram</b> .....	<b>13</b>	12.2. Protection Control.....	36
8.1. Indoor Unit.....	13	<b>13 Servicing Mode</b> .....	<b>39</b>
8.2. Outdoor Unit .....	14	13.1. Auto OFF/ON Button .....	39
<b>9 Electronic Circuit Diagram</b> .....	<b>15</b>	13.2. Select Remote Control Transmission Code .....	39
9.1. Indoor Unit.....	15	13.3. Remote Control Button .....	40

# Panasonic®

© 2008 Panasonic HA Air-Conditioning (M) Sdn. Bhd. (11969-T). All rights reserved. Unauthorized copying and distribution is a violation of law.

# 17 Exploded View and Replacement Parts List

## 17.1. Indoor Unit



### Note

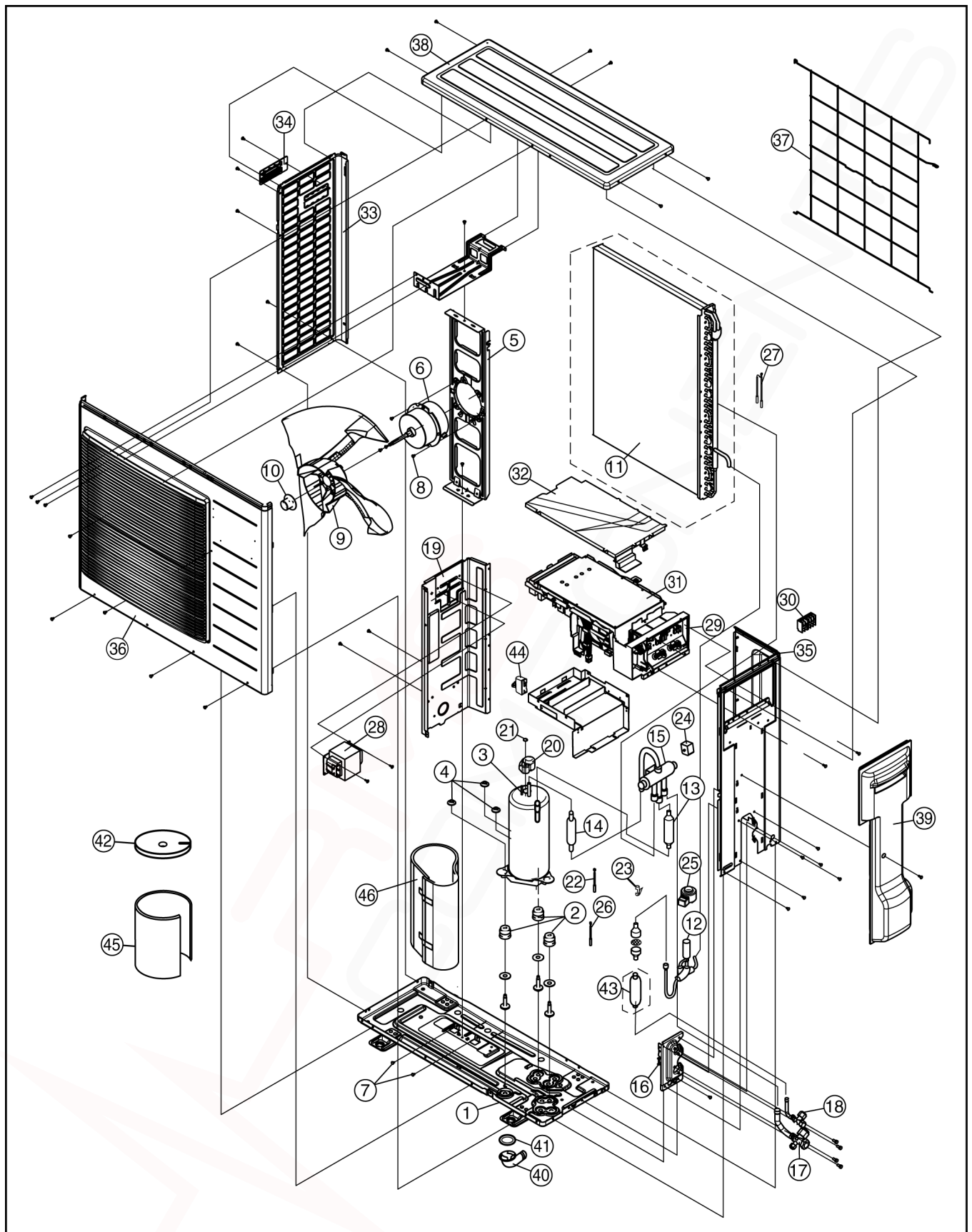
The above exploded view is for the purpose of parts disassembly and replacement.  
The non-numbered parts are not kept as standard service parts.

NO.	PART NAME & DESCRIPTION	QTY.	CS-E15HKR	REMARK
1	CHASSY COMPLETE	1	CWD50C1572	
2	FAN MOTOR DC 30W 3PH	1	ARW61E8P30AC	O
3	CROSS-FLOW FAN COMPLETE	1	CWH02C1045	
4	SCREW - CROSS FLOW FAN	1	CWH551146	
5	BEARING ASSY	1	CWH64K007	
6	ION GENERATOR	1	CWH94C0014	
7	EVAPORATOR	1	CWB30C2708	
8	FLARE NUT (1/4)	1	CWT251030	
9	FLARE NUT (3/8) (1/2)	1	CWT251032	
10	INTAKE AIR SENSOR HOLDER	1	CWH32143	
11	DISCHARGE GRILLE COMPLETE	1	CWE20C2627	
12	VERTICAL VANE	12	CWE241157	
13	CONNECTING BAR	1	CWE261092	
14	CONNECTING BAR	1	CWE261071	
15	CONNECTING BAR	1	CWE261091	
16	A.S.MOTOR DC SINGLE 12V 300 OHM	1	CWA981091	O
17	FULCRUM	1	CWH621096	
18	CAP - DRAIN TRAY	1	CWH521096	
19	HORIZONTAL VANE	1	CWE24C1183	
20	BACK COVER CHASSIS	1	CWD932454	
21	CONTROL BOARD CASING	1	CWH102321	
22	TERMINAL BOARD COMPLETE	1	CWA28C2357	O
23	ELECTRONIC CONTROLLER - MAIN	1	CWA73C3330	O
24	ELECTRONIC CONTROLLER - POWER	1	CWA745297	O
25	INDICATOR COMPLETE	1	CWE39C1168	O
26	INDICATOR HOLDER	1	CWD932744	
27	INDICATOR HOLDER	1	CWD932745	
28	SENSOR COMPLETE	1	CWA50C2401	O
29	CONTROL BOARD COVER (TOP)	1	CWH131207	
30	CONTROL BOARD COVER (FRONT)	1	CWH13C1171	
31	REMOTE CONTROL COMPLETE	1	CWA75C3109	O
32	FRONT GRILLE COMPLETE	1	CWE11C4074	O
33	INTAKE GRILLE COMPLETE	1	CWE22C1503	O
34	GRILLE DOOR COMPLETE	1	CWE14C1010	
35	E-ION FILTER	2	CWD00K1008	
36	SCREW FOR FRONT GRILLE	2	XTT4+16CFJ	
37	CAP FOR FRONT GRILLE	2	CWH521109	
38	DRAIN HOSE	1	CWH851063	
39	INSTALLING HOLDER ASSY	1	CWH361067	
40	BAG COMPLETE FOR INSTALLATION	1	CWH82C067	
41	E-ION AIR PURIFYING SYSTEM	1	CWH14C6369	
42	OPERATING INSTRUCTION	1	CWF566112	
43	INSTALLATION INSTRUCTION	1	CWF613475	

(NOTE)

- All parts are supplied from PHAAM, Malaysia (Vendor Code: 061).
- "O" marked parts are recommended to be kept in stock.

## 17.2. Outdoor Unit



### Note

The above exploded view is for the purpose of parts disassembly and replacement.  
The non-numbered parts are not kept as standard service parts.

NO.	DESCRIPTION & NAME	QTY.	CU-E15HKR	REMARK
1	CHASSY ASSY	1	CWD52K1191	
2	ANTI - VIBRATION BUSHING	3	CWH50077	
3	COMPRESSOR	1	5CS130XAD04	O
4	NUT - COMPRESSOR MOUNT	3	CWH56000J	
5	FAN MOTOR BRACKET	1	CWD541126	
6	FAN MOTOR DC 40W 3PH	1	CWA951620	O
7	SCREW - FAN MOTOR BRACKET	3	CWH551217	
8	SCREW - FAN MOTOR MOUNT	3	CWH551040J	
9	PROPELLER FAN ASSY	1	CWH001019	
10	NUT - PROPELLER FAN	1	CWH561038J	
11	CONDENSER COMPLETE	1	CWB32C2600	
12	TUBE ASSY (EXP. VALVE)	1	CWT025764	
13	ACCUMULATOR	1	CWB131024	
14	RECEIVER	1	CWB14011	
15	4 WAYS VALVE	1	CWB001026J	
16	HOLDER - COUPLING	1	CWH351056	
17	3 WAYS VALVE (GAS)	1	CWB011338	
18	2 WAYS VALVE (LIQUID)	1	CWB021292	
19	SOUND PROOF BOARD	1	CWH151198	
20	TERMINAL COVER	1	CWH171039A	
21	NUT - TERMINAL COVER	1	CWH7080300J	
22	SENSOR COMPLETE (COMP. TOP)	1	CWA50C2185	O
23	HOLDER SENSOR	1	CWH32074	
24	V-COIL COMPLETE	1	CWA43C2169J	O
25	V-COIL COMPLETE FOR EXP.VALVE	1	CWA43C2257	O
26	SENSOR CO (COMP.DISCHARGE)	1	CWA50C2515	
27	SENSOR COMPLETE	1	CWA50C2517	O
28	REACTOR	1	G0C153J00007	O
29	CONTROL BOARD CASING (SIDE)	1	CWH102362	
30	TERMINAL BOARD ASSY	1	CWA28K1110J	
31	ELECTRONIC CONTROLLER - MAIN	1	CWA73C3322R	O
32	CONTROL BOARD COVER (TOP)	1	CWH131333	
33	CABINET SIDE PLATE(L)	1	CWE041320A	
34	HANDLE	1	CWE161010	
35	CABINET SIDE PLATE (R)	1	CWE041318A	
36	CABINET FRONT PLATE ASSY	1	CWE06K1062	
37	WIRE NET	1	CWD041128A	
38	CABINET TOP PLATE	1	CWE031083A	
39	CONTROL BOARD COVER COMPLETE	1	CWH13C1185	
40	DRAIN HOSE	1	CWH5850080	
41	PACKING - L.TUBE	1	CWB81012	
42	SOUND PROOF MATERIAL	1	CWG302301	
43	DRYER	1	CWB101017J	
44	SH CAPACITOR	1	DS461355QP-A	O
45	SOUND PROOF MATERIAL	1	CWG302302	
46	SOUND PROOF MATERIAL	1	CWG302245	

(NOTE)

- All parts are supplied from PHAAM, Malaysia (Vendor Code: 061).
- "O" marked parts are recommended to be kept in stock.