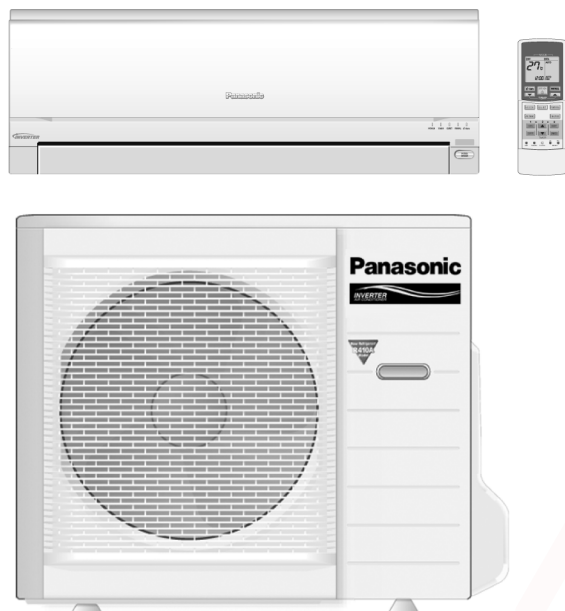


Service Manual

Air Conditioner

CS-E15GKR CU-E15GKR



⚠ WARNING

This service information is designed for experienced repair technicians only and is not designed for use by the general public. It does not contain warnings or cautions to advise non-technical individuals of potential dangers in attempting to service a product. Products powered by electricity should be serviced or repaired only by experienced professional technicians. Any attempt to service or repair the product or products dealt with in this service information by anyone else could result in serious injury or death.

⚠ PRECAUTION OF LOW TEMPERATURE

In order to avoid frostbite, be assured of no refrigerant leakage during the installation or repairing of refrigeration circuit.

TABLE OF CONTENTS

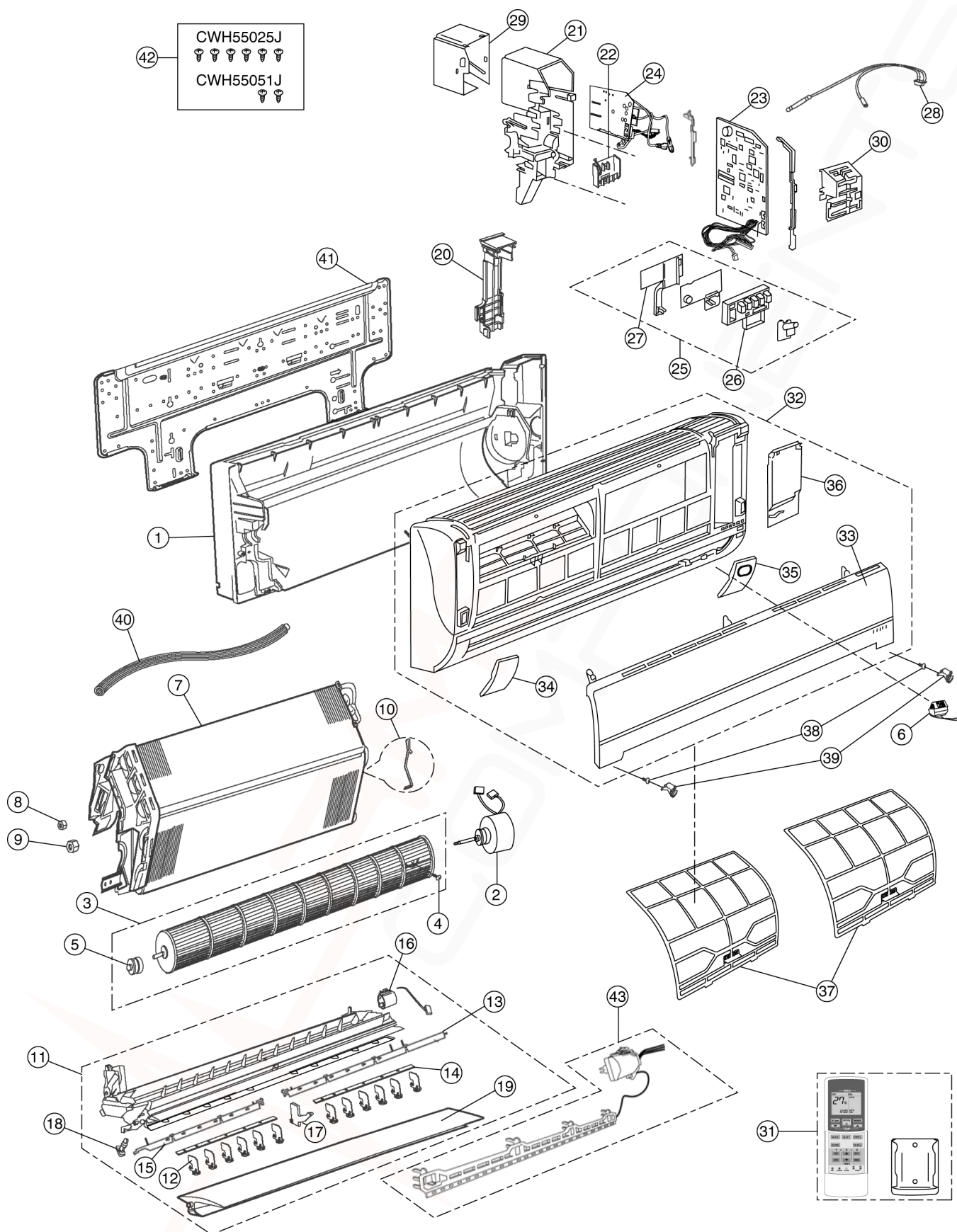
| | PAGE | | PAGE |
|--|-----------|--|-----------|
| 1 Safety Precaution | 2 | 9 Electronic Circuit Diagram | 14 |
| 2 Specifications | 4 | 9.1. Indoor Unit | 14 |
| 2.1. CS-E15GKR CU-E15GKR | 4 | 9.2. Outdoor Unit | 15 |
| 3 Features | 6 | 10 Printed Circuit Board | 16 |
| 4 Location of Controls and Components | 7 | 10.1. Indoor Unit | 16 |
| 4.1. Product Overview | 7 | 10.2. Outdoor Unit | 18 |
| 5 Dimensions | 8 | 11 Installation Instruction | 19 |
| 5.1. Indoor Unit | 8 | 11.1. Select The Best Location | 19 |
| 5.2. Outdoor Unit | 9 | 11.2. Indoor/Outdoor Unit Installation Diagram | 19 |
| 6 Refrigeration Cycle Diagram | 10 | 11.3. Indoor Unit | 20 |
| 7 Block Diagram | 11 | 11.4. Outdoor Unit | 23 |
| 8 Wiring Connection Diagram | 12 | 12 Operation and Control | 26 |
| 8.1. Indoor Unit | 12 | 12.1. Basic Function | 26 |
| 8.2. Outdoor Unit | 13 | 12.2. Protection Control | 35 |

Panasonic®

© 2007 Panasonic HA Air-Conditioning (M) Sdn. Bhd.
(11969-T). All rights reserved. Unauthorized copying
and distribution is a violation of law.

17 Exploded View and Replacement Parts List

17.1. Indoor Unit



Note

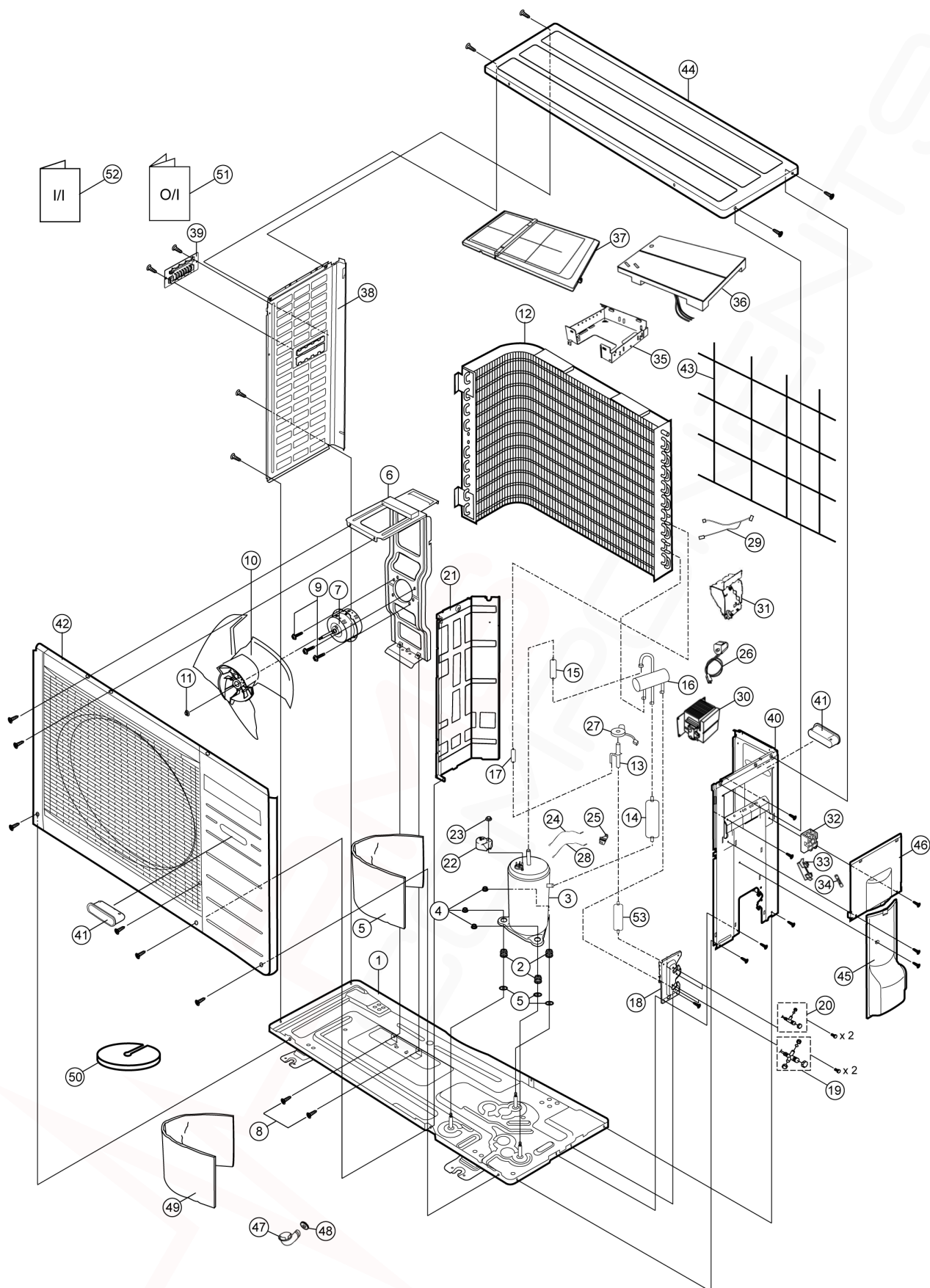
The above exploded view is for the purpose of parts disassembly and replacement.
The non-numbered parts are not kept as standard service parts.

| REF. NO. | PART NAME & DESCRIPTION | QTY. | CS-E15GKR |
|----------|----------------------------------|------|--------------|
| 1 | CHASSY COMPLETE | 1 | CWD50C1513 |
| 2 | FAN MOTOR, DC 30W 3PH | 1 | ARW61E8P30AC |
| 3 | CROSS-FLOW FAN COMPLETE | 1 | CWH02C1045 |
| 4 | SCREW - CROSS FLOW FAN | 1 | CWH551146 |
| 5 | BEARING ASSY | 1 | CWH64K007 |
| 6 | ION GENERATOR | 1 | CWH94C0014 |
| 7 | EVAPORATOR | 1 | CWB30C2100 |
| 8 | FLARE NUT (1/4) | 1 | CWT251030 |
| 9 | FLARE NUT (3/8) (1/2) | 1 | CWT251032 |
| 10 | INTAKE AIR SENSOR HOLDER | 1 | CWH32143 |
| 11 | DISCHARGE GRILLE COMPLETE | 1 | CWE20C2627 |
| 12 | VERTICAL VANE | 12 | CWE241157 |
| 13 | CONNECTING BAR | 1 | CWE261092 |
| 14 | CONNECTING BAR | 1 | CWE261071 |
| 15 | CONNECTING BAR | 1 | CWE261091 |
| 16 | A.S.MOTOR, DC SINGLE 12V 300 OHM | 1 | CWA981091 |
| 17 | FULCRUM | 1 | CWH621049 |
| 18 | CAP - DRAIN TRAY | 1 | CWH521096 |
| 19 | HORIZONTAL VANE | 1 | CWE24C1183 |
| 20 | BACK COVER CHASSIS | 1 | CWD932454 |
| 21 | CONTROL BOARD CASING | 1 | CWH102321 |
| 22 | TERMINAL BOARD COMPLETE | 1 | CWA28C2305 |
| 23 | ELECTRONIC CONTROLLER - MAIN | 1 | CWA73C2833 |
| 24 | ELECTRONIC CONTROLLER - POWER | 1 | CWA744567 |
| 25 | INDICATOR COMPLETE | 1 | CWE39C1168 |
| 26 | INDICATOR HOLDER | 1 | CWD932744 |
| 27 | INDICATOR HOLDER | 1 | CWD932745 |
| 28 | SENSOR COMPLETE | 1 | CWA50C2122 |
| 29 | CONTROL BOARD COVER (TOP) | 1 | CWH131207 |
| 30 | CONTROL BOARD COVER (FRONT) | 1 | CWH13C1171 |
| 31 | REMOTE CONTROL COMPLETE | 1 | CWA75C3109 |
| 32 | FRONT GRILLE COMPLETE | 1 | CWE11C3873 |
| 33 | INTAKE GRILLE COMPLETE | 1 | CWE22C1344 |
| 34 | DECORATION BASE | 1 | CWE351173A |
| 35 | DECORATION BASE | 1 | CWE35K1016 |
| 36 | GRILLE DOOR COMPLETE | 1 | CWE14C1010 |
| 37 | E-ION FILTER | 2 | CWD00K1001 |
| 38 | SCREW FOR FRONT GRILLE | 2 | XTT4+16CFJ |
| 39 | CAP FOR FRONT GRILLE | 2 | CWH521109 |
| 40 | DRAIN HOSE | 1 | CWH851063 |
| 41 | INSTALLING HOLDER ASSY | 1 | CWH361067 |
| 42 | BAG COMPLETE FOR INSTALLATION | 1 | CWH82C067 |
| 43 | E-ION AIR PURIFYING SYSTEM | 1 | CWH14C5332 |

(NOTE)

- All parts are supplied from PHAAM, Malaysia (Vendor Code: 061).
- "O" marked parts are recommended to be kept in stock.

17.2. Outdoor Unit



Note:

The above exploded view is for the purpose of parts disassembly and replacement.
The non-numbered parts are not kept as standard service parts.

| REF. NO. | DESCRIPTION & NAME | QTY. | CU-E15GKR |
|----------|-------------------------------|------|--------------|
| 1 | CHASSY ASSY | 1 | CWD50K2085 |
| 2 | ANTI - VIBRATION BUSHING | 3 | CWH50077 |
| 3 | COMPRESSOR | 1 | 5CS130XAD04 |
| 4 | NUT - COMPRESSOR MOUNT | 3 | CWH56000J |
| 5 | SOUND PROOF MATERIAL | 1 | CWG302302 |
| 6 | FAN MOTOR BRACKET | 1 | CWD541084 |
| 7 | FAN MOTOR, DC 40W 3PH | 1 | CWA981166J |
| 8 | SCREW - FAN MOTOR BRACKET | 2 | CWH551174J |
| 9 | SCREW - FAN MOTOR MOUNT | 3 | CWH551106J |
| 10 | PROPELLER FAN ASSY | 1 | CWH03K1016 |
| 11 | NUT - PROPELLER FAN | 1 | CWH56053J |
| 12 | CONDENSER COMPLETE | 1 | CWB32C1910 |
| 13 | TUBE ASSY (EXP. VALVE) | 1 | CWT022999 |
| 14 | ACCUMULATOR | 1 | CWB131024 |
| 15 | RECEIVER | 1 | CWB14011 |
| 16 | 4 WAYS VALVE | 1 | CWB001026J |
| 17 | STRAINER | 1 | CWB11094 |
| 18 | HOLDER - COUPLING | 1 | CWH351056 |
| 19 | 3 WAYS VALVE (GAS) | 1 | CWB011361 |
| 20 | 2 WAYS VALVE (LIQUID) | 1 | CWB021292 |
| 21 | SOUND PROOF BOARD | 1 | CWH151050 |
| 22 | TERMINAL COVER | 1 | CWH171039A |
| 23 | NUT - TERMINAL COVER | 1 | CWH7080300J |
| 24 | SENSOR COMPLETE (COMP. TOP) | 1 | CWA50C2185 |
| 25 | HOLDER SENSOR | 1 | CWH32074 |
| 26 | V-COIL COMPLETE | 1 | CWA43C2168J |
| 27 | V-COIL COMPLETE FOR EXP.VALVE | 1 | CWA43C2058J |
| 28 | SENSOR CO (COMP.DISCHARGE) | 1 | CWA50C2180 |
| 29 | SENSOR COMPLETE | 1 | CWA50C2181 |
| 30 | REACTOR | 1 | CWA421069 |
| 31 | CONTROL BOARD CASING (SIDE) | 1 | CWH102273 |
| 32 | TERMINAL BOARD ASSY | 1 | CWA28K1110J |
| 33 | FUSE HOLDERS | 1 | K3GB1PH00016 |
| 34 | FUSE CAP TERMINAL | 1 | K5D303BBA002 |
| 35 | CONTROL BOARD CASING (BOTTOM) | 1 | CWH102282 |
| 36 | ELECTRONIC CONTROLLER - MAIN | 1 | CWA73C2816R |
| 37 | CONTROL BOARD COVER (TOP) | 1 | CWH131167 |
| 38 | CABINET SIDE PLATE(L) | 1 | CWE041082A |
| 39 | HANDLE | 1 | CWE161010 |
| 40 | CABINET SIDE PLATE (R) | 1 | CWE041158A |
| 41 | HANDLE | 2 | CWE16000E |
| 42 | CABINET FRONT PLATE ASSY | 1 | CWE06K1043 |
| 43 | WIRE NET | 1 | CWD041041A |
| 44 | CABINET TOP PLATE | 1 | CWE031031A |
| 45 | CONTROL BOARD COVER (BOTTOM) | 1 | CWH131168 |
| 46 | CONTROL BOARD COVER (TOP) | 1 | CWH131169A |
| 47 | DRAIN HOSE | 1 | CWH5850080 |
| 48 | PACKING - L.TUBE | 1 | CWB81012 |
| 49 | SOUND PROOF MATERIAL | 1 | CWG302290 |
| 50 | SOUND PROOF MATERIAL | 1 | CWG302301 |
| 51 | OPERATING INSTRUCTION | 1 | CWF565741 |
| 52 | INSTALLATION INSTRUCTION | 1 | CWF613284 |
| 53 | DRYER | 1 | CWB101017J |

(Note)

- All parts are supplied from PHAAM, Malaysia (Vendor Code: 061).
- "O" marked parts are recommended to be kept in stock.